

## CRACKER BAY — HAKVOORT



**Судостроитель:** HAKVOORT

**Год постройки:** 2002

**Модель:** Моторная яхта

**Цена:** **ЦЕНА ЯХТЫ ПО ЗАПРОСУ**

**Местонахождение:** United States

**Длина общая:** 146' 3" (44.58m)

**Ширина:** 28' 9" (8.76m)

**Мин. осадка:** 9' 2" (2.79m)

**Макс. осадка:** 9' 2" (2.79m)

**Крейс. скорость:** 12 Kts. (14 MPH)

**Макс. скорость:** 14 Kts. (16 MPH)

Купить **CRACKER BAY — HAKVOORT** а также выбрать подходящую вам яхту из нашего каталога яхт вам поможет опытный яхтенный брокер Андрей Шестаков. На сегодняшний день компания **Shestakov Yacht Sales Inc.** имеет большое количество яхт в собственном списке продаж, а также тесно сотрудничает со всеми крупными яхтенными производителями по всему миру.

Для того чтобы купить яхту **CRACKER BAY — HAKVOORT** а также проконсультироваться по любому вопросу связанному с покупкой, продажей, чартером яхт позвоните по телефону **+7(918)465-66-44**.

# ОГЛАВЛЕНИЕ

---

ОГЛАВЛЕНИЕ	2
ХАРАКТЕРИСТИКИ	4
Обзор	4
Основная информация	4
Размеры	4
Скорость, вместимость и масса	5
Размещение	5
Корпус и палуба	5
Информация о двигателе	6
ПОДРОБНОЕ ОПИСАНИЕ	7
Accommodations and Layout	7
Electrical Equipment	8
Mechanical and Engine Room Equipment	8
Communications and Navigation Equipment	8
Audio/Visual Equipment	8
Galley and Laundry Equipment	8
Deck Equipment	9
Tenders	9
Security, Fire Fighting & Safety	9
Remarks	9
Exclusions	10
Исключения	11
Отказ от ответственности	11
ФОТОГРАФИИ	12
Main Salon	12
Main Deck Aft	12
Main Salon	12
Formal Dining	12

Master - Private Massage / Sitting Area	12
Master Stateroom	12
Master Bath	13
Queen Guest Stateroom	13
Queen Guest Stateroom	13
Queen Guest Stateroom	13
Queen Guest Bath	13
King Guest / Convertible to Twins	13
Guest Stateroom - Twin Bunks	14
Pilothouse	14
Skylounge	14
Sundeck Dining	14
Sundeck Jacuzzi	14
Upper Aft Deck	14
Upper Aft Deck	15
Upper Aft Deck	15
Tenders	15
Sun Deck - Boat Deck Layout	16
Cracker Bay - Profile	16
Main Deck - Cabin Deck Layout	16
<b>КОНТАКТЫ</b>	<b>17</b>
Контактная информация	17
Телефоны	17
Время работы	17
Адрес	17

# ХАРАКТЕРИСТИКИ

## Обзор

"CRACKER BAY" was launched in 2002 as Campbell Bay built by Hakvoort Shipyard in Holland, an extremely high quality Northern European shipyard. Lloyds and MCA certified. She has been superbly maintained by her two owners. Diana Yacht Design, the renowned Dutch naval architects, gave her a spacious six stateroom layout. Interior designed originally by Andrew Winch and was recently refurbished by Rodriguez Interiors with rich wood, book matched paneling. A 5500 mile range due to economical Caterpillar main engines and 115kw Northern Lights generators and Zero Speed Stabilizers make her a true world class cruiser. Completely updated with digitalized electronic panels, helm updated with Furuno navigation on bridge. Recently painted. Ready to cruise.

## Основная информация

<b>Тип судна:</b> Моторная яхта	<b>Подкатегория:</b> Tri-Deck
<b>Модельный год:</b> 2002	<b>Год постройки:</b> 2002
<b>Год обновления:</b> 2015	<b>Страна:</b> United States
<b>Верх:</b> Enclosed P.H. W/Sundeck	<b>Открытая палуба мостика:</b> Да

## Размеры

<b>Длина общая:</b> 146' 3" (44.58m)	<b>Длина по ватерлинии:</b> 123' 0" (37.49m)
<b>Ширина:</b> 28' 9" (8.76m)	<b>Мин. осадка:</b> 9' 2" (2.79m)
<b>Макс. осадка:</b> 9' 2" (2.79m)	

## Скорость, вместимость и масса

---

**Крейс. скорость:** 12 Kts. (14 MPH)

**Крейсерская скорость поворота:** 1375 Kts.

**Дальность на крейсерской скорости:** 5000

**Макс. скорость:** 14 Kts. (16 MPH)

**Макс. скорость поворота:** 1650 Kts.

**Водоизмещение:** 959010.8397 Pounds

**Чистый вес:** 491 Pounds

**Вместимость воды:** 3222 Gallons

**Вместимость сточного бака:** 119 Gallons

**Объем топливного бака:** 15057 Gallons

## Размещение

---

**Всего кают:** 6

**Спальные места:** 12

**Всего ком. состава:** 8

**Каюта капитана:** Да

**Каюты экипажа:** 5

**Койки экипажа:** 12

**Спальных мест экипажа:** 12

**Комм. состав экипажа:** 5

## Корпус и палуба

---

**Материал корпуса:** Steel

**Материал палубы:** Teak and Steel

**Комплектация корпуса:** Full Displacement

**Цвет корпуса:** white

**Дизайнер корпуса:** Diana Yacht Design

**Дизайнер экстерьера:** Diana Yacht Design

**Дизайнер интерьера:** Andrew Winch Designs

## Информация о двигателе

---

**Двигатели:** 2

**Производитель:** Caterpillar

**Модель:** 3508B - DITA

**Тип двигателя:** Inboard

**Тип топлива:** Diesel

# ПОДРОБНОЕ ОПИСАНИЕ

## Accommodations and Layout

**2015: All new interior décor; carpeting, soft goods, furniture, LED lighting (see "remarks" section)** Accommodations are provided for 12 owners/guests in six staterooms, including an on-deck owner's suite with owner's private massage room/spa (or study.) Crew quarters for 12 are arranged in five cabins, including upper deck Captain's Cabin. Sun Deck: Forward is a large Jacuzzi surrounded by sunpads. To port is a staircase to the bridge. Amidships is a large, teak dining table with seating for twelve. Outboard of the table is storage and wet bar. Aft on the sundeck are twin, built-in seating areas outboard on each side and additional chaise lounges for sunning. There are electric awnings for shade, dumb waiter and side serving bars. Upper Deck: Aft are twin, U-shaped dining/cocktail areas under the deck overhang with teak tables. Further aft is the tender storage. Forward is the Portuguese walk-around bridge (all decking is teak covered.) Entering aft to the Skylounge is a comfortable area with game table to port and seating to starboard. On the portside forward of the game table is a full bar. Forward of this area is the day head, stairs to the main deck and access to the wheel house and Captain's Cabin. The wheelhouse features U-shaped guest seating and two helm chairs. To port is the entrance to the Captain's Cabin. Main Deck: The aft main deck features a large seating area that may be used as a dining or lounging area. The passerelle is to starboard and the swim platform access is from the port side. Forward on the main deck are two seating areas which allow guests to enjoy the view and feel the breeze while underway. The interior main deck has two access points for owners/guests, amidships starboard side and aft from the aft deck seating area. Entering the **Main Saloon** from the aft deck to port are two chairs and two large sofas with end tables and custom coffee table. To starboard is the access stairs to the guest staterooms and also a game table. Forward of the main saloon is the formal dining area with ample seating for twelve guests. To port is access to the galley and serving area. There is also a crew access door, entrance to the crew cabins and amidships engine room. There are also stairs up to the bridge for crew usage. On the starboard side, forward of the dining area, is the day head, access to the upper deck and Owner's Suite entrance foyer. Continuing forward is the **Owner's Suite** with private massage/spa room. The master stateroom features a king-size bed, high definition TV with surround sound and his/hers closets. The woodwork is beautifully executed with burl wood insets and raised panels. The master bath features a large tub, twin sinks, full shower and separate water closet, with extensive use of marble on the countertops, floors and walls. Lower Deck: There are five guest staterooms on the lower deck aft, accessed from a central foyer. Four of the staterooms are of equal size. Three staterooms feature queen berths and large heads, complete with tubs, showers and dual sinks. The guest heads are accented with extensive use of marble and wood. The fourth stateroom has a king berth that can be converted into two twin beds with night stands. All the staterooms are beautifully paneled in dark wood with custom inlays. All four of the guest cabins feature a small writing desk and large closets. The fifth guest stateroom is a small twin with over/under bunks, head with shower and single sink.

---

## Electrical Equipment

---

Generators: 2x Northern Lights, 115 Kw (rebuilt 2014) Hours: Port: 12,286, stbd: 12,225 (as of June 1, 2016) Shore power: 2 x 100 amp @ 480 volts Batteries: house, start, emergency and navigation

---

## Mechanical and Engine Room Equipment

---

Air conditioning: chilled water system, 45 tons at 50 Hz (new 2014) 2x Hydro Electric water makers (7600 gallons per day) 1x Wesmar 85 Kw twin hydraulic bow thruster Quantum Zero Speed hydraulic stabilizer system 1x Alpha Laval fuel separator and filtration Sewage system: 1x Hamann Chlorine Dosing Oil/water separator: 1x DVZ -Services Boilers: 2x 80 gallons each Water closets: 13x Micro 4 Fire/bilge pump: 1x one each, interchangeable (diesel emergency in lazarette) ASEA frequency converter, Deif Energy Management

---

## Communications and Navigation Equipment

---

SATcom Telephone system: Panasonic PBX System incoming lines (2x VOIP, 1x cellular, 1x Fleet, X1 Mini M) 2x Furuno VHF Cellular phone system 2x Furuno Radar 1x C-Plath Gyrocompass 1x Venus magnetic compass 1x C-Plath Automatic Pilot 2x Simrad GPS 1x Furuno IAS GPS 1x Northstar GPS

---

## Audio/Visual Equipment

---

The entire vessel is wired with central audio system featuring: Kaleidescape entertainment system Sat radio AM/FM radio iPod dock High Definition Satellite TV Each cabin and entertainment space includes the following (5 guest cabins, master cabin, main salon, sky lounge, captain's cabin and crew lounge): Denon 5.1 Surround Amplifier HD Sat Receiver (U.S.) HD Sat Receiver (Caribbean) Kaleidescape player iPod dock Crestron Touch Screen Remote Control (new style)

---

## Galley and Laundry Equipment

---

Main Galley: MKN 6-burner cooktop MKN griddle MKN deep fryer 2x MKN Ovens Amana commercial microwave Waring commercial 4-slice toaster Commercial Espresso machine 2x commercial stainless steel 2-door refrigerators 1x commercial stainless steel under counter freezer 1x walk-in freezer (lower deck) 1x walk in refrigerator (lower deck) 1x Miele professional dishwasher Crew Mess: 1x Sharp microwave oven 1x 5-gallon water cooler Laundry Equipment: 3x Miele professional washers 3x Miele professional dryers 2x Rowenta steam iron



---

## Deck Equipment

---

2x One-drum Muir hydraulic anchor windlass system 2x Muir capstans (aft deck) 2x galvanized anchors 1x emergency Danforth anchor 2x galvanized anchor chain 2x Cramm 4000 lb. capacity hydraulic boat crane Swim platform: steel integrated into hull design with teak covering 1x swim platform shower 1x Cramm hydraulic passerelle

---

## Tenders

---

2x Nautica 18 ft. hard bottom RIBs with Yamaha 115 hp outboard engines

---

## Security, Fire Fighting & Safety

---

Security: Panasonic black and white CCTV system Cameras: 5x (port, stbd, mast, aft deck, engine room) Door alarms: 7x (all exterior doors) Fire Fighting Equipment: Built-in CO2 - engine room Built-in CO2 - galley Sea water with 9 fire hydrants around vessel Safety Equipment: 4x 12-person life rafts 5x life buoys (2 w/lights) 48x life jackets (6 child) 1x search light - remote operated from bridge 6x first aid kits 1x stretcher 3x oxygen sets 1x external defibrillator

---

## Remarks

---

CRACKER BAY has been extremely well maintained since new. All class and flag certificates are maintained and current. All machinery and ship's systems have been renewed and upgraded, when possible, as per manufacturer's specifications. All coatings are in exceptional condition including exterior, interior, machinery and bilges. All interior wood finishes have been upgraded and original veneers preserved. All Audio/Visual equipment has been updated to the latest technology and equipment **Interior Refit 2015** New carpet throughout New headboards in all cabins All new soft goods in all cabins New wall treatments throughout New sofas in main salon, skylounge New table in main salon, skylounge New dining chairs in dining salon All new LED interior lighting from Savage **2014**

Major overhaul main engines

Overhaul generators

Full new a/c plant

New air handlers built of 3/16 stainless steel

New components, walk in fridge, freezer and galley fridge

New dishwasher

Upgraded the main switch board from Analog to digital with touch screen control

---

Refinish master stateroom and bathroom

New high definition sat dish

Upgrade A/V remotes, etc. **2012/2013**

Lloyd's 10-year survey

Fully rebuilt cranes and passerelle

Full paint job all hardware removed

New Jacuzzi

Refinish main saloon and wheel house and wheel house floor

New ice makers **2010/2011**

New wheelhouse console and all navigational equipment

Refinished all guest cabins and galley

Replaced all pumps engine room **2008/2009**

New generators upgraded to 115kw from 99kw

New Shore power unit A-sea 150kva

Full paint job; all hardware removed

Deck re-seamed

New AV throughout TVs including wiring

New Hamann sewage treatment plant **2007/2008**

Lloyd's five-year special survey

Major service main engines 7000 hrs.

## Exclusions

---

A detailed exclusion list will be provided pursuant to a purchase and sale agreement.  
**CRACKER BAY is not offered for sale to U.S. residents while in U.S. waters.**

## Исключения

---

При продаже яхты исключаются личные вещи владельца.

## Отказ от ответственности

---

Компания предоставляет описание судна или яхты добросовестно, но не может гарантировать точность этой информации, а также не ручается за техническое состояние. Покупатель должен проинструктировать своих агентов или оценщиков исследовать представленную информацию более подробно, по собственному желанию. Продажа судна или яхты, изменение цены или снятие с продажи будет происходить без предварительного уведомления.

# ФОТОГРАФИИ

**Main Deck Aft**



**Main Salon**



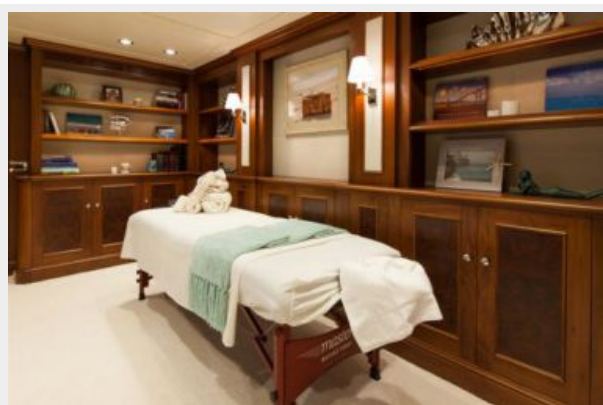
**Main Salon**



**Formal Dining**



**Master - Private Massage / Sitting Area**



**Master Stateroom**



**Master Bath**



**Queen Guest Stateroom**



**Queen Guest Stateroom**



**Queen Guest Stateroom**



**Queen Guest Bath**



**King Guest / Convertible to Twins**



**Guest Stateroom - Twin Bunks**



**Pilothouse**



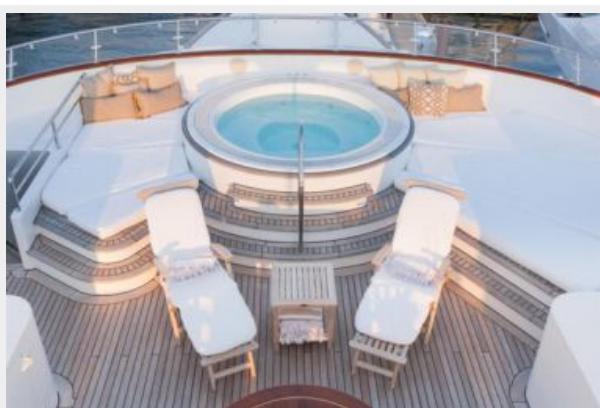
**Skylounge**



**Sundeck Dining**



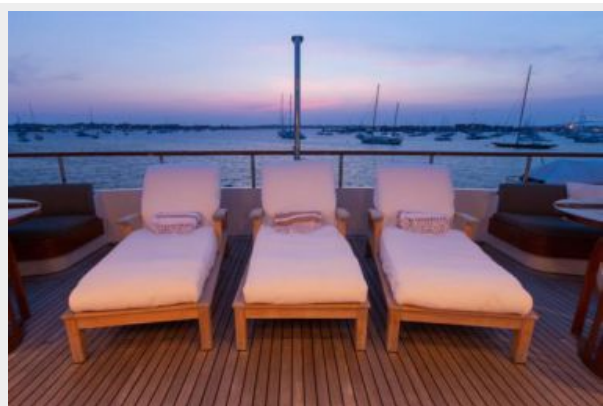
**Sundeck Jacuzzi**



**Upper Aft Deck**



### Upper Aft Deck



### Upper Aft Deck



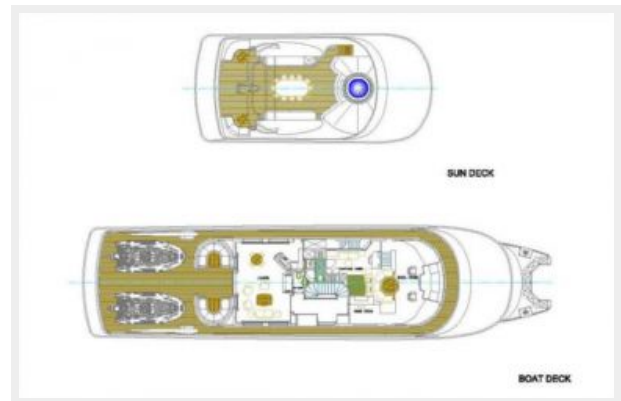
### Tenders



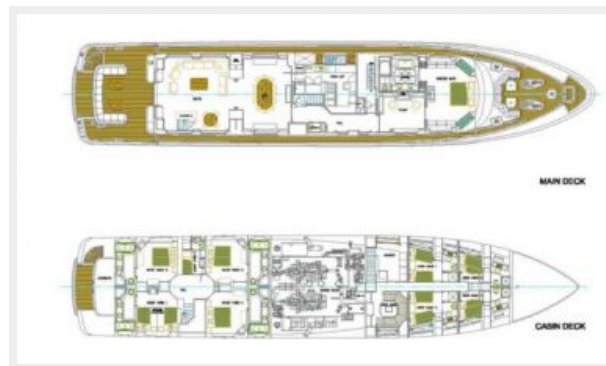
### Cracker Bay - Profile



### Sun Deck - Boat Deck Layout



### Main Deck - Cabin Deck Layout





# КОНТАКТЫ

---

Андрей Шестаков (Andrey Shestakov) – ведущий яхтенный брокер отдела продаж яхт и судов компании Shestakov Yacht Sales Inc. Официальный представитель Shestakov Yacht Sales Inc. для русскоговорящих клиентов в центральном офисе компании в Майами/Форт Лодердейл/Флорида/США.

## Контактная информация

---

Email: [andrey@shestakovyachtsales.com](mailto:andrey@shestakovyachtsales.com)

Web: [shestakovyachtsales.com](http://shestakovyachtsales.com)

## Телефоны

---

Краснодарский край: **+7(918)465-66-44**

США, Майами, Флорида: **+1(954)274-4435**

## Время работы

---

Понедельник – Суббота: **9:00 - 21:00**  
EDT

Воскресенье: **Закрито**

## Адрес

---



Harbour Towne Marina, 850 NE 3rd St,  
STE 213, Dania, FL 33004