

## RECESS — SEA RAY



**Судостроитель:** SEA RAY

**Год постройки:** 2005

**Модель:** Крейсер

**Цена:** **ЦЕНА ЯХТЫ ПО ЗАПРОСУ**

**Местонахождение:** United States

**Длина общая:** 42' 0" (12.80m)

**Ширина:** 14' 0" (4.27m)

**Макс. осадка:** 3' 4" (1.02m)

**Крейс. скорость:** 25 Kts. (29 MPH)

**Макс. скорость:** 30 Kts. (35 MPH)

Купить **RECESS — SEA RAY** а также выбрать подходящую вам яхту из нашего каталога яхт вам поможет опытный яхтенный брокер Андрей Шестаков. На сегодняшний день компания **Shestakov Yacht Sales Inc.** имеет большое количество яхт в собственном списке продаж, а также тесно сотрудничает со всеми крупными яхтенными производителями по всему миру.

Для того чтобы купить яхту **RECESS — SEA RAY** а также проконсультироваться по любому вопросу связанному с покупкой, продажей, чартером яхт позвоните по телефону **+7(918)465-66-44**.

# ОГЛАВЛЕНИЕ

---

ОГЛАВЛЕНИЕ	2
ХАРАКТЕРИСТИКИ	3
Обзор	3
Основная информация	3
Размеры	3
Скорость, вместимость и масса	3
Размещение	4
Корпус и палуба	4
Информация о двигателе	4
ПОДРОБНОЕ ОПИСАНИЕ	5
Description	5
Manufacturer Specified Standard Equipment	5
Исключения	15
Отказ от ответственности	15
ФОТОГРАФИИ	16
КОНТАКТЫ	20
Контактная информация	20
Телефоны	20
Время работы	20
Адрес	20

# ХАРАКТЕРИСТИКИ

## Обзор

### 2005 Sea Ray 420 Sundancer - Twin Cummins Diesels - One Owner – SUPER LOW HOURS AT 174!!! Don't Miss this Beauty!!

The Sea Ray 420 Sundancer set the gold standard for express yacht styling and luxury (called the 44 Sundancer in 2006-2008). Her muscular lines compare well with the best Mediterranean sport cruisers of her era, and a large cockpit and spacious interior make many of her European counterparts seem small in comparison. The wide 14' beam and luxurious two-stateroom, two head floor plan is an impressive blend of high gloss cherry joinery, Ultraleather seating, and designer fabrics. Privacy doors (not curtains!) separate both staterooms from the salon, and the Sundancer's full service galley includes an under counter refrigerator / freezer in addition to Corian counters and wood flooring. Topside, a flip-up bolster seat is standard at the helm, and the entire cockpit sole can be raised at the push of a button for engine access. Additional features include an extended swim platform, split forward head and underwater exhaust system. Her V-drive diesels will have you cruising in style!

## Основная информация

Тип судна: Крейсер

Модельный год: 2005

Год постройки: 2005

Страна: United States

## Размеры

Длина общая: 42' 0" (12.80m)

Длина палубы: 42' 0" (12.80m)

Ширина: 14' 0" (4.27m)

Макс. осадка: 3' 4" (1.02m)

## Скорость, вместимость и масса

Крейс. скорость: 25 Kts. (29 MPH)

Макс. скорость: 30 Kts. (35 MPH)

## Размещение

---

Всего кают: 2

## Корпус и палуба

---

Материал корпуса: Fiberglass

## Информация о двигателе

---

Двигатели: 2

Производитель: Cummins

Модель: 6СТА8.3М

Тип двигателя: Inboard

Тип топлива: Diesel

---

# ПОДРОБНОЕ ОПИСАНИЕ

---

## Description

---

Sleek styling, a large, comfortable cockpit and a luxurious interior that sleeps plenty are just the right formula for endless fun in the new 420 Sundancer. A wealth of instrumentation and information is at the captain's fingertips, and twin Cummins 6CTA8.3M Diesel inboards will get you to most any destination with ease. The beautiful, yet efficient, galley includes a host of conveniences that will make each on-the-water excursion thoroughly enjoyable.

## Manufacturer Specified Standard Equipment

---

### HULL & DECK FEATURES

Bottom Paint

Bow Rail, 316 Stainless Steel w/Welded Stanchions,

Intermediate Rails & Life Lines

Canvas package

Deck cleats - Stainless

Deck Fill Plates, Stainless Steel

Deck Rails, 316 Stainless Steel

Drain Plugs, Brass-Threaded - Garboard

Gel Coat, Arctic White

Graphics, Striping

Handrails, 316 Stainless Steel

Hatch, Deck Vent - Translucent w/Locks & Sky

Screen Cover (20x20)

Lights, Navigation

Portlights, Stainless Steel (3 Fixed, 3 Opening)

Resin, High-Performance Vinylester

Rub Rail, PVC w/Stainless Steel Insert

Skylight, Flush-Mount - Salon

Storage, Transom Wall - (For Fenders & Gear)

Stringer System, Fiberglass

Swim Platform, Integral/Extended w/Concealed

Stainless Steel Three-Step Swim Ladder w/Integral

Grab Handle

Thru-Hull Fittings, Stainless Steel

Toe Rail, Molded Fiberglass - Deck

Vent System, Engine Room - Integral

Windshield, Tempered/Tinted Curved Glass

w/Stainless Steel Frame, Electric Front Vent &

Stainless Steel Supports

Windshield Washer System w/Delay & Speed Control

Windshield Wipers w/Delay & Speed Control

## **Canvas**

Aft Curtain

Aft Sunshade

Bimini Top w/Boot & Vertical Storage

Front Curtains

Side Curtains

## **Windlass System:**

Anchor, Galvanized

Anchor Chute, Stainless Steel

Anchor Rope/Chain Storage w/Hatches (2)

& Fender Storage

Anchor Washdown Spigot

---

Windlass, Rope/Chain w/Foot Switches (Lofrans Project 1,000 Low Profile)

**Certifications:**

Meets Applicable USCG & ABYC Standards

NMMA Certification

**COCKPIT FEATURES**

Beverage Holders (10)

Carpet Liner, Snap-In

Door, Cabin Entry - Curved Acrylic

Door, Transom

Floor Liner, Fiberglass - Self-Bailing

Hatch, Engine Room - Electrically Actuated

Ice Bucket, Insulated - Built-In

Icemaker, 120V

Lighting, Indirect

Outlet, 12V Accessory

Outlet, 120V GFI Protected

Seating, Companion Bench w/Molded Fiberglass

Storage Base & Euro-Style Backrest

Seating, Helm - Custom Euro-Style w/Flip-Up Bolster, Armrests & Heavy-Duty Pedestal

w/Slide, Swivel & Pneumatic Vertical Adjustment

Seating, U-Shaped - Aft

Ship's Bell

Sport Spoiler, Molded Fiberglass (Seamless)

w/Overhead Lighting

Step, Molded Deck Access

Storage, Side Panel - Starboard

Table, Cockpit w/Corian®

Insert & Dedicated Storage

Wet Bar w/Sink & Faucet, Corian Countertop,

Stainless Steel Handrail, Trash Receptacle &

Storage Cabinet - Port

## **CABIN FEATURES**

Carbon Monoxide Monitors

Carpet, Deep-Pile BCF - 44-Ounce

Carpet Runners, Interior (Sunbrella)

Handrails, Stainless Steel

Interior Finish - Blossom Cherry (also available in

Natural Maple)

Lighting, 12V Halogen

Lighting, 12V Indirect

Outlet, Phone

Outlets, 120V GFI Protected

Outlets & Switch Plates - Satin Nickel Finish

Pillows, Accent

Steps, Entryway - Wood

Storage, In-Floor

Wood Trim, Handcrafted

### **Salon:**

Blinds, Wood

Countertop, Solid Surface w/Lift-Out Storage

Entertainment Center

- Stereo, 12V AM/FM Single CD, Satellite-Ready



w/6-Disc CD Changer, Amplifier, Subwoofer,  
Speakers (8), Digital Cockpit Remote Control &  
Speaker Selector Switches (Clarion)  
- TV, 20" Flatscreen LCD, Flip Down, (120V) w/Remote  
DVD Player, Coax Outlet & Gain Control Panel  
Mirror, Wall Accent  
Seating, Crescent-Shaped Sofa w/Storage Below -  
Converts to Bed (Ultraleather HP™)  
Storage, Gunwale Cabinets  
Table, Dinette w/High-Gloss Wood Surface &  
Dedicated Storage  
**Galley:**  
Coffeemaker, 120V  
Countertop, Solid Surface, Sink, Grohe®  
Faucet & Sink Cover  
Freezer, Under-Counter - Dual-Voltage - 120V/12V  
Microwave/Convection Oven, 120V  
Outlet, 12V Accessory  
Power Vent, 12V, w/Stainless Grill  
Refrigerator, Under-Counter - Dual-Voltage 120V/12V  
Storage, Drawers w/Cutlery Insert  
Storage, Upper & Lower w/Designated Plate  
& Glass Storage  
Stove, 120V Recessed Two-Burner w/Solid Surface  
Cover  
Trash Receptacle w/Chute & Solid Surface Cover

**Forward Stateroom:**

Bed, Full-Size w/ Innerspring Mattress, Pillows, Sheets,

Coordinated Spread & Drawer Storage Below

Door, Pocket - Privacy w/Mirror

Hanging Locker w/Light & Shelves - Port

Hanging Locker w/Light & Shelves - Starboard

Mirrored Rope Locker Bulkhead

Storage, Gunwale Cabinets - Upper

TV/DVD Combo, 13" - 120V w/Remote & Coax Outlet

**Forward Head - Port:**

Door, Privacy - Access from Forward Stateroom

Handrails, Stainless Steel

Head, VacuFlush®

Power Vent, 12V, w/Stainless Grill

Storage, Gunwale Cabinets

Storage, Medicine Cabinet - Mirrored

Vanity w/Solid Surface Countertop, Sink, Grohe

Faucet & Storage Below

**Forward Shower - Starboard:**

Clothes Hook

Curtain, Shower

Door, Privacy - Access from Forward Stateroom

Handrails, Stainless Steel

Shower w/Seat & Adjustable Grohe Shower Wand

**Mid-Stateroom:**

Door, Privacy - Sliding Pocket

Hanging Locker - Port

Mirrored Bulkhead - Aft

Portlight, Stainless Steel - Fixed

Seating, Conversation Pit - Converts to Double Berth

w/Slide-Out Base

Storage, Cabinets - Starboard

**Mid-Stateroom Head/Shower:**

Clothes Hook

Curtain, Shower

Door, Privacy - Access from Mid-Stateroom

Handrail, Elliptical Stainless Steel

Head w/Fiberglass Settee Lid VacuFlush

Storage, Medicine Cabinet

Vanity w/Solid Surface Countertop, Sink, Faucet

w/Pullout Shower Sprayer & Storage Below

**TECHNICAL**

Control Station:

Alarms, Engine - Oil, Water & Transmission Oil

Alarms, High-Water - Bilge & Cabin

Compass

Emergency Start System - Engines

Gel-Coated Dash - Nickel

Horns, Air (Concealed) - Dual Trumpet

Instrument Panel

Shift & Throttle Controls w/Gold Knobs

SmartCraft™ Diagnostics:

- Instrumentation, Custom Sea Ray®

SmartCraft

4-in-1 Multigauges (2) w/Low-Glare Blue Night

Lighting & Chrome Bezels (Includes: Fuel Level,

Oil Pressure, Voltmeter, Water Temperature)

- SmartCraft System View (Includes: Air & Water

Temperature, Combined Fuel Flow/Range, Depth,

Engine Alarms/Hourmeters, Engine Synchronizer,

GPS Interface, System Maintenance Records)

Steering, Hydraulic

Steering, Tilt Wheel

Steering Wheel, Wood-Accent

Switch Panel (Backlit)

Switches, Illuminated Weatherproof Rockers &

Dimmer Control

Systems Monitor, Digital LCD - for Engine

& Pump Monitoring

### **Electronics:**

Raymarine C120 RADAR CHART PLOTTER Multifunction color display

Raymarine GPS w/WAAS

Raymarine 48 mile open array radar

Raymarine ST 7001+ autopilot

Raymarine VHF Radio w/ Remote Speaker

Clarion stereo with remote

SmartCraft computer interface with display

### **Electrical Systems:**

Batteries (5) w/Trays & Switches

Battery Charger/Converter, 120V/40 Amp/12V

Panel, Circuit Breaker - Remote

Panel, DC Main Breaker

Panel, Main Distribution - AC

Panel, Main Distribution - DC

Shore Power, Dual 30 Amp/120V/60 Cycle w/Zinc

Savers & 50' Cords & Adapters

TV/Phone Inlet w/TV Antenna, TV Shore Cord &

Phone Shore Cord

Wiring, Color-Coded w/Chafe Protection

**Generator:**

Onan Remote Start w/Muffler, Freshwater Cooling, Fuel

Filter, Seacock & Seawater Strainer, 120V/60 Cycle

Air Conditioning/Heating:

Zone-Controlled Reverse-Cycle System

Custom Integral Vent System

**Engine Room:**

Bilge Pumps, 12V Automatic (2)

Bilge Pumps, 12V Automatic High-Water

(1 Bilge, 1 Cabin)

Blowers, 12V Bilge (2)

Exhaust, Underwater - Patented

Fire Suppression System - Automatic w/Manual Pull

Gel-Coated Engine Room, Oyster

Insulation, Engine Room - 2" w/Vinyl Barrier

Lighting, 12V

Steps, Engine Room Access

**Fuel System:**

Fuel Lines, USCG - Type A-1

Fuel Tanks, Aluminum w/Anti-Siphon Valves & Electric

Sending Units (2)

**Water System:**

Freshwater Hose & Spigot - Engine Room

Freshwater Washdown Spigot - Transom

Manifold System w/Shutoff Valves

Pressure Water System w/12V Pump

Shower, Cockpit - Hot & Cold

Water Heater, 120V (11-Gallon)

Water Inlet, Dockside

**Waste Systems:**

Head System (VacuFlush®)

Holding Tank Level Indicators - MDP & Heads

Holding Tank w/Dockside Pump-Out & Automatic

Cut-Off (42-Gallon)

Sump Box w/Pumps - Automatic

**Underwater Gear:**

Bonding System w/Zinc Hull Plate

Rudders, Manganese-Bronze w/Stainless Steel Posts

Seacocks on all Underwater Fittings

Seawater Strainers

Shaft Logs, Dripless w/Extra Seal Carrier Kit

Struts, Manganese-Bronze

Trim Tabs, Hydraulic

## **Исключения**

---

При продаже яхты исключаются личные вещи владельца.

## **Отказ от ответственности**

---

Компания предоставляет описание судна или яхты добросовестно, но не может гарантировать точность этой информации, а также не ручается за техническое состояние. Покупатель должен проинструктировать своих агентов или оценщиков исследовать представленную информацию более подробно, по собственному желанию. Продажа судна или яхты, изменение цены или снятие с продажи будет происходить без предварительного уведомления.

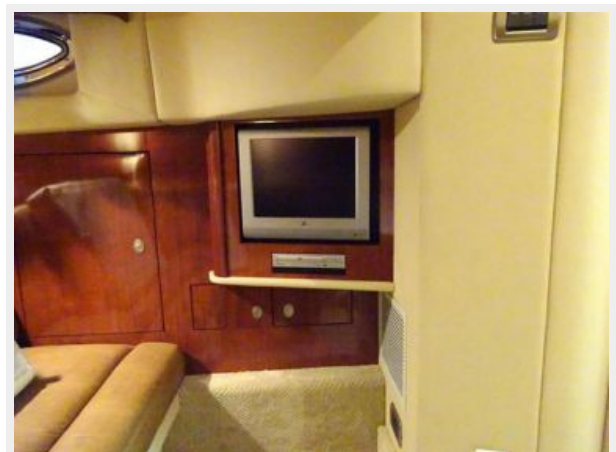
# ФОТОГРАФИИ











# КОНТАКТЫ

---

Андрей Шестаков (Andrey Shestakov) – ведущий яхтенный брокер отдела продаж яхт и судов компании Shestakov Yacht Sales Inc. Официальный представитель Shestakov Yacht Sales Inc. для русскоговорящих клиентов в центральном офисе компании в Майами/Форт Лодердейл/Флорида/США.

## Контактная информация

---

Email: [andrey@shestakovyachtsales.com](mailto:andrey@shestakovyachtsales.com)

Web: [shestakovyachtsales.com](http://shestakovyachtsales.com)

## Телефоны

---

Краснодарский край: **+7(918)465-66-44**

США, Майами, Флорида: **+1(954)274-4435**

## Время работы

---

Понедельник – Суббота: **9:00 - 21:00**  
EDT

Воскресенье: **Закрето**

## Адрес

---



Harbour Towne Marina, 850 NE 3rd St,  
STE 213, Dania, FL 33004