

## FUNDOCTOR — SEA RAY



**Builder:** [SEA RAY](#)

**Year Built:** 2004

**Model:** Cruiser

**Price:** PRICE ON APPLICATION

**Location:** United States

**LOA:** 31' 0" (9.45m)

**Beam:** 11' 2" (3.40m)

**Max Draft:** 3' 7" (1.09m)

Our experienced yacht broker, Andrey Shestakov, will help you choose and buy a yacht that best suits your needs **Fundoctor — SEA RAY** from our catalogue. Presently, at Shestakov Yacht Sales Inc., we have a wide variety of yachts available on our sale's list. We also work in close contact with all the big yacht manufacturers from all over the world.

If you would like to buy a yacht **Fundoctor — SEA RAY** or would like help answering any questions concerning purchasing, selling or chartering a yacht, please call **+1(954)274-4435**

---

# TABLE OF CONTENTS

---

TABLE OF CONTENTS	2
SPECIFICATIONS	3
Overview	3
Basic Information	3
Dimensions	3
Speed, Capacities and Weight	3
Accommodations	3
Hull and Deck Information	3
Engine Information	4
DETAILED INFORMATION	5
Electronics	5
Inside Equipment	5
Electrical Equipment	5
Outside Equipment	6
Remarks	6
Exclusions	6
Disclaimer	6
PHOTOS	7
CONTACTS	14
Contact details	14
Telephones	14
Office hours	14
Address	14

---

# SPECIFICATIONS

---

## Overview

---

Boat has been lift kept w/ bottom paint.

Vessel recently surveyed.

## Basic Information

---

**Category:** Cruiser

**Model Year:** 2004

**Year Built:** 2004

**Country:** United States

## Dimensions

---

**LOA:** 31' 0" (9.45m)

**Beam:** 11' 2" (3.40m)

**Max Draft:** 3' 7" (1.09m)

## Speed, Capacities and Weight

---

**Displacement:** 12000 Pounds

**Water Capacity:** 35 Gallons

**Holding Tank:** 28 Gallons

**Fuel Capacity:** 200 Gallons

## Accommodations

---

**Total Cabins:** 1

## Hull and Deck Information

---

**Hull Material:** Fiberglass

---

## Engine Information

---

**Engines:** 2

**Manufacturer:** Mercruiser

**Model:** 5.0 MPI

**Engine Type:** Inboard

**Fuel Type:** Gas/Petrol

---

## DETAILED INFORMATION

---

### Electronics

---

Cockpit speakers

Raymarine RN/300

TV set

GPSGarmin 182C/Plotter Sounder

Raymarine 2150DSC VHF Radio

Clarion CD player

### Inside Equipment

---

Microwave oven

Air conditioning

Marine headOven

Electric bilge pump

Battery charger

Electric head

Heating

Hot water

### Electrical Equipment

---

30 Amp Service

Inverter

Shore power inlet

Electrical Circuit: 110V

Kohler 6 KW Generator

---

## Outside Equipment

---

Swimming ladder

Cockpit table

Cockpit shower

Cockpit cushions

Electric windlass

Refrigerator

Windlass

Forward Spotlight

---

## Remarks

---

Vessel was recently surveyed. Boat has been lift kept with bottom paint.

---

## Exclusions

---

Owner's personal belongings.

---

## Disclaimer

---

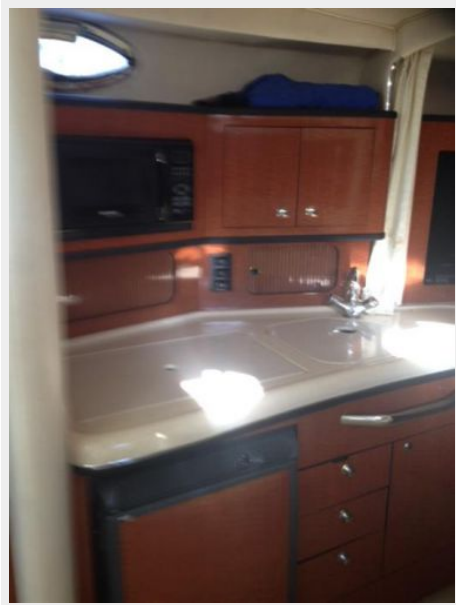
The Company offers the details of this vessel or yacht in good faith but cannot guarantee or warrant the accuracy of this information nor warrant the condition of the vessel. A buyer should instruct his representatives, agents, or his surveyors, to investigate such details as the buyer desires validated. This vessel or yacht is offered subject to prior sale, price change, or withdrawal without notice.

# PHOTOS



















# CONTACTS

---

Andrey Shestakov, leading yacht broker of the sales department of Shestakov Yacht Sales Inc. Shestakov Yacht Sales Inc., the official representative of the Miami/Fort Lauderdale FL headquarters.

## Contact details

---

Email: [andrey@shestakovyachtsales.com](mailto:andrey@shestakovyachtsales.com)

Web: [shestakovyachtsales.com/en/](http://shestakovyachtsales.com/en/)

## Telephones

---

USA: +1(954)274-4435

## Office hours

---

Monday – Saturday: **9:00 - 21:00** EDT

Sunday: **closed**

## Address

---



Harbour Towne Marina, 850 NE 3rd St,  
STE 213, Dania, FL 33004