

SUPERLATIVE — PEARL MOTOR YACHTS



Builder: PEARL MOTOR YACHTS

Year Built: 2012

Model: Motor Yacht

Price: PRICE ON APPLICATION

Location: United States

LOA: 60' 0" (18.29m)

Beam: 16' 4" (4.98m)

Max Draft: 5' 0" (1.52m)

Cruise Speed: 26 Kts. (30 MPH)

Max Speed: 32 Kts. (37 MPH)

Our experienced yacht broker, Andrey Shestakov, will help you choose and buy a yacht that best suits your needs **Superlative — PEARL MOTOR YACHTS** from our catalogue. Presently, at Shestakov Yacht Sales Inc., we have a wide variety of yachts available on our sale's list. We also work in close contact with all the big yacht manufacturers from all over the world.

If you would like to buy a yacht **Superlative — PEARL MOTOR YACHTS** or would like help answering any questions concerning purchasing, selling or chartering a yacht, please call **+1(954)274-4435**

TABLE OF CONTENTS

TABLE OF CONTENTS	2
SPECIFICATIONS	4
Overview	4
Basic Information	4
Dimensions	4
Speed, Capacities and Weight	4
Accommodations	4
Hull and Deck Information	4
Engine Information	5
DETAILED INFORMATION	6
Principal Features	6
Deck Features	6
Stainless Steel Fittings	6
Aft Cockpit	7
Upper Helm Position and Flybridge	7
Salon	7
Salon Helm Position	8
Galley	8
Aft Stateroom	8
En-Suite Head	8
Forward Stateroom	9
Port and Starboard Guest Cabins	9
Electrical 240V	9
Forward Head	9
Electrical 24V	10
Fuel	10
Freshwater	10
Mechanical	10

Safety	10
Exclusions	11
Disclaimer	11
PHOTOS	12
Maufacturer Prodvided Image	12
Maufacturer Prodvided Image	12
Maufacturer Prodvided Image	13
Maufacturer Prodvided Image	13
Maufacturer Prodvided Image	18
CONTACTS	19
Contact details	19
Telephones	19
Office hours	19
Address	19

SPECIFICATIONS

Overview

"Superlative" a 2012 Pearl 60 oozes style and sophistication. the stunning interior is finished in American walnut joinery with black granite and Avonite surfaces, contemporary fittings and almond leather upholstery. This luxury aft cabin motor yacht is remarkably spacious with four sumptuous cabins and exhilarating performance. Her power comes from 2 Volvo Penta D13 800hp engines producing a top speed of 32 knots.

Basic Information

Category: Motor Yacht

Model Year: 2012

Year Built: 2012

Country: United States

Dimensions

LOA: 60' 0" (18.29m)

Beam: 16' 4" (4.98m)

Max Draft: 5' 0" (1.52m)

Speed, Capacities and Weight

Cruise Speed: 26 Kts. (30 MPH)

Max Speed: 32 Kts. (37 MPH)

Water Capacity: 154 Gallons

Fuel Capacity: 616 Gallons

Accommodations

Total Cabins: 4

Hull and Deck Information

Hull Material: Fiberglass

Engine Information

Engines: 2

Manufacturer: Volvo Penta

Model: D13

Engine Type: Inboard

Fuel Type: Diesel

DETAILED INFORMATION

Principal Features

- Contemporary American Walnut Joinery
- Asea AC convertor
- 13kw Generator
- Bow Thruster
- Stern Thruster
- Gamin Series Chart Plotter, radar and GPS
- Leather Upholstery in Salon and Flybridge Bimini
- Dual Station Gamin Colour
- Dishwasher
- Flybridge tonneau cover

Deck Features

- Hydraulically operated bathing platform
- Electrically operated aft deck sunroof system
- Teak laid aft deck and bathing platform
- Moulded non-slip deck with recessed area for coach roof sun cushions
- Fitted heavy duty stainless steel rubbing strake with white nylon carrier
- Hot and cold transom shower
- Water and fuel fillers
- Full set of IMCO navigation lights

Stainless Steel Fittings

- Twin rail pulpit
- Flybridge hand rails
- Electric anchor winch
- Stainless steel 30kg bruce anchor with 60m chain
- Stainless steel bow roller for automatic launch and recovery
- Hydraulic remote control passarelle
- Twin stainless steel bow and stern cleats
- Twin midship and platform cleats
- Heavy duty forward fairleads
- Heavy duty aft fairleads
- Bathing ladder
- Stainless steel horn

Aft Cockpit

- Cushioned seating incorporating storage lockers
- Teak laid steps to flybridge and bathing platform
- Recessed high and low level waterproof lighting
- Manual bilge pumps
- Twin cockpit doors
- Hinged dodger lids containing capstan mooring winches, cleats and fender bins
- Hinged locker containing fuel shut-off levers, fire extinguishers and engine room fire extinguisher override.

Upper Helm Position and Flybridge

- Twin helm seat
- Laminated high gloss instrument panel and steering wheel
- Hydraulic steering
- Cableless electronics single lever engine controls
- Full engine instrumentation
- Digital speed and depth gauges
- VHF radio
- Controls for trim tabs, anchor winch and searchlight
- Switches for bilge pumps, horn and navigation lights
- High speed magnetic compass
- Upholstered seating area with storage
- Stainless steel framed smoked acrylic wind deflector
- Waterproof speakers for hi-fi system
- Helm position indicator
- Foldaway table
- Barbecue and sink unit with drink fridge below

Salon

- Electrically operated stainless steel framed patio door to aft deck
- Entrance stairway with acrylic handrail and step treads
- U shaped settee with low level coffee table
- Halogen lighting incorporated into suede-lines ceiling panels
- Fitted CD/radio with concealed speakers
- Electrically operated forward side windows
- Bonded windscreen and windows
- Electrical control panel including controls for AC/DC and generator
- Semicircular dinette seating area and fixed table
- Blinds fitted to aft salon windows

Salon Helm Position

- Electrically operated stainless steel framed patio door to aft deck
- Entrance stairway with acrylic handrail and step treads
- U shaped settee with low level coffee table
- Halogen lighting incorporated into suede-lines ceiling panels
- Fitted CD/radio with concealed speakers
- Electrically operated forward side windows
- Bonded windscreen and windows
- Electrical control panel including controls for AC/DC and generator
- Semicircular dinette seating area and fixed table
- Blinds fitted to aft salon windows

Galley

- Comprehensively fitted galley
- Integrated four-plate halogen stove top with combination microwave/conventional oven and electric grill
- Domestic fridge freezer
- Dedicated crockery and cutlery storage
- Uniquely designed built-in storage cupboards and drawers
- Sink and drainer with hot and cold mixer tap
- Concealed lighting
- Extractor fan
- Pearl crockery and cutlery set

Aft Stateroom

- 6'6" x 5'6" bed with fully sprung mattress
- Halogen lighting
- Twin reading lights
- Dressing table
- Twin hanging wardrobe
- Seating area
- Opening escape hatch to aft deck
- High level air-conditioning soffit
- Stainless steel opening portholes with fly screens and blinds
- Mirrors

En-Suite Head

- Fitted electric marine toilet
- Wash basin with mixer taps and storage cupboard below
- Separate shower with acrylic door and automatic pump-out
- Extractor fan
- Mirror
- Stainless steel opening porthole with blind

Forward Stateroom

- Double bed with fully sprung mattress with storage below
- Halogen lighting
- Twin reading lights
- Twin hanging wardrobe
- Side vanity units
- High level air-conditioning soffit
- Opening deck hatch and stainless steel portholes with flyscreen and blind
- Forward bulkhead mirror

Port and Starboard Guest Cabins

- Two single berths
- Halogen lighting and individual reading lights
- Shelved storage cupboard
- Washer/dryer (starboard cabin only)
- Stainless steel opening porthole with flyscreen and blind
- Bedside unit with storage drawers
- Mirror

Electrical 240V

- 6.5KVA generator providing 240v supply
- Polarity check system, power points in aft stateroom, salon, galley, forward stateroom and forward guest cabins
- 220/240v shore power supply

Forward Head

- Fitted electric marine toilet
- Wash basin with mixer taps and storage cupboard below
- Separate shower with acrylic door and automatic pump-out

- Extractor fan
- Stainless steel opening porthole with flyscreen and blind
- Mirrored cabinet
- Halogen lighting

Electrical 24V

- Heavy-duty batteries for engine starting and domestic supply
- 100amp battery charger with split charging system
- All circuits protected by circuit breakers controlled from main control panel

Fuel

- Twin enamelled aluminum fuel tanks total capacity 2800 liters
- High capacity water separators and fuel filters
- Emergency fuel shut-off levers in aft cockpit

Freshwater

- 700 liters capacity water tanks including calorifier
- Automatic pressurized water system with pump and filter
- Water tank contents gauge
- Holding tanks with contents gauges and pump-out from deck outlet or through hull
- Single skin fitting waster outlet system

Mechanical

- Soundproofed engine bay with high power extractor fans
- Water-cooled exhaust with underwater outlets
- Integrally bonded fore and aft bulkheads
- P brackets and four-blade propellers constructed from nickel aluminum bronze
- Balanced rudders
- Cathodic protection
- Stern gear engines, tanks are electrically bonded

Safety

- Automatic fire extinguishers in engine and generator room with auto shut down and alarm indicator panel on helm position

- Hand-operated fire extinguishers in all cabins, galley and on deck
- Automatic bilge pumps with manual override in forward bilge, aft bilge and engine room
- Externally operated manual bilge pumps in aft cockpit

Exclusions

Owner's personal belongings.

Disclaimer

The Company offers the details of this vessel or yacht in good faith but cannot guarantee or warrant the accuracy of this information nor warrant the condition of the vessel. A buyer should instruct his representatives, agents, or his surveyors, to investigate such details as the buyer desires validated. This vessel or yacht is offered subject to prior sale, price change, or withdrawal without notice.

PHOTOS

Maufacturer Prodvived Image



Maufacturer Prodvived Image

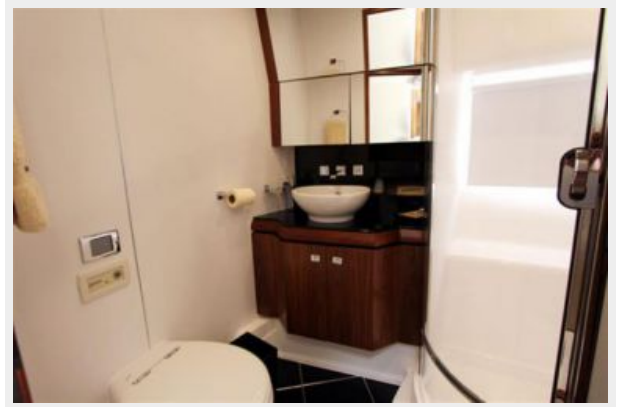


Maufacturer Provided Image

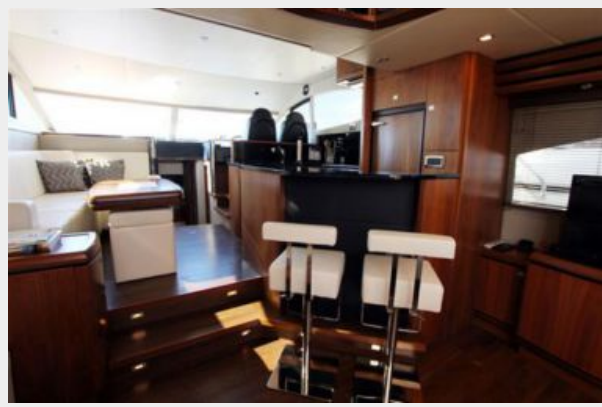


Maufacturer Provided Image



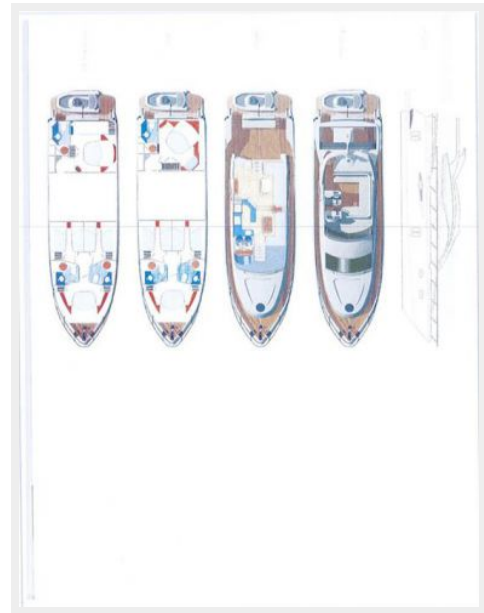








Manufacturer Provided Image



CONTACTS

Andrey Shestakov, leading yacht broker of the sales department of Shestakov Yacht Sales Inc. Shestakov Yacht Sales Inc., the official representative of the Miami/Fort Lauderdale FL headquarters.

Contact details

Email: andrey@shestakovyachtsales.com

Web: shestakovyachtsales.com/en/

Telephones

USA: +1(954)274-4435

Office hours

Monday – Saturday: **9:00 - 21:00** EDT

Sunday: **closed**

Address



Harbour Towne Marina, 850 NE 3rd St,
STE 213, Dania, FL 33004