

COFFEE BREAK — LIBERTY YACHTS



Builder: LIBERTY YACHTS

Year Built: 2002

Model: Sport Fisherman

Price: PRICE ON APPLICATION

Location: United States

LOA: 38' 0" (11.58m)

Beam: 14' 10" (4.52m)

Min Draft: 3' 8" (1.12m)

Our experienced yacht broker, Andrey Shestakov, will help you choose and buy a yacht that best suits your needs **Coffee Break — LIBERTY YACHTS** from our catalogue. Presently, at Shestakov Yacht Sales Inc., we have a wide variety of yachts available on our sale's list. We also work in close contact with all the big yacht manufacturers from all over the world.

If you would like to buy a yacht **Coffee Break — LIBERTY YACHTS** or would like help answering any questions concerning purchasing, selling or chartering a yacht, please call **+1(954)274-4435**

TABLE OF CONTENTS

TABLE OF CONTENTS	2
SPECIFICATIONS	5
Basic Information	5
Dimensions	5
Speed, Capacities and Weight	5
Accommodations	5
Hull and Deck Information	5
Engine Information	5
DETAILED INFORMATION	6
Walkthrough	6
Cabin	6
Entertainment Center	6
Galley	6
Accommodations/Berth	7
Head/Shower	7
Deck and Hull	7
Cockpit	7
Bridge Deck	8
Electronics	8
Tower	9
Tower Electronics	9
Engine Room	9
Remarks	10
Exclusions	10
Disclaimer	10
PHOTOS	11
Cabin	11
Cabin	11

Accommodations/Berth	11
Accommodations/Berth	11
Accommodations/Berth	11
Accommodations/Berth	11
Head	12
Accommodations/Berth	12
Bridge Deck	12
Bridge Deck	12
Bridge Deck	13
Bridge Deck	13
Bridge Deck	13
Cockpit	13
Cockpit	13
Cockpit	13
Cockpit	14
Cockpit	14
Cockpit	14
Tower	14
Engine Room	14
Engine Room	14
Engine Room	15
Engine Room	15
Coffee Break	15
Engine Room	15
Coffee Break	16
Coffee Break	16
Coffee Break	16
CONTACTS	17
Contact details	17

Telephones	17
Office hours	17
Address	17

SPECIFICATIONS

Basic Information

Category: Sport Fisherman	Model Year: 2003
Year Built: 2002	Country: United States

Dimensions

LOA: 38' 0" (11.58m)	Beam: 14' 10" (4.52m)
Min Draft: 3' 8" (1.12m)	

Speed, Capacities and Weight

Water Capacity: 170 Gallons	Fuel Capacity: 585 Gallons
-----------------------------	----------------------------

Accommodations

Total Cabins: 1

Hull and Deck Information

Hull Material: Fiberglass

Engine Information

Engines: 2	Manufacturer: Cummins
Model: QSM-11	Engine Type: Inboard
Fuel Type: Diesel	

DETAILED INFORMATION

Walkthrough

The Coffee Break features a center helm station with bench seats port and starboard. Her cabin door is centerline as well with galley located to port and head with shower to starboard. The dinette is to starboard and comfortably seats 4, the dinette also converts to a bunk. Forward is a large V-berth that will comfortably sleep 2.

Cabin

- Teak & holly sole with bound carpet covering
- Teak & holly entranceway steps with storage
- Bench seat to port with storage below
- Dinette with teak table to starboard with storage below
- Clear dinette table cover
- Dinette also converts to additional berth
- Concealed rod storage port & starboard, outboard
- Centerline single Bowmar hatch
- Cedar lined hanging locker
- 3 drawer storage beneath dinette seating
- Lighting throughout
- Marine Air A/C, replaced 7/2014

Entertainment Center

- Sharp LC-15A2 television
- Farenheit DVD-10 disc player
- Pioneer CDX-P680 multi disc player
- Alpine VPE-V180A VHS player
- Pioneer AM/FM stereo
- Standard Horizon VHF radio

Galley

- Galley is located below to port
- Molded Corian countertops and sink
- Princess 2 burner flush mounted cooktop
- Proctor Silex microwave
- Stainless lined refrigerator

- Abundant of shelf storage throughout
- Ships main AC/DC electrical panel
- Fuel and water level indicator
- Gen hour meter

Accommodations/Berth

- Centerline V-berth with storage below
- Reading lamps
- Stereo speakers
- Dinette converts to berth

Head/Shower

- The head and shower are located below to starboard.
- Make up mirror above
- Sliding door vanity behind sink
- Molded Corian countertop and sink
- Teak credenza below with storage
- Teak and holly sole
- Raritan electric head
- Separate stall shower with sliding door
- Bench seat in shower
- Sliding teak head door

Deck and Hull

- Lewmar windlass
- Storage/anchor locker in foredeck
- Aluminum bow rail
- Single Bowmar deck hatch
- White hull color
- Black boot top
- Black bottom paint
- Transom door
- Bennett trim tabs

Cockpit

- Molded in transom box, plumbed as livewell

- Transom door
- Port and starboard gaff lockers
- Fresh and salt water washdown
- Insulated ice box for ice chipper
- Bait freezer
- Cockpit engine room access, centerline
- Floor mounted fishboxes, port and starboard
- Stereo speakers
- Flush mounted rod holders
- Aft rail mounted rocket launcher, aft hardtop
- 6 Clearing rod holders, tower legs
- Fighting chair, currently in storage

Bridge Deck

- Centerline helm console with cover
- Helm chair with 4" pedestal
- Cummins engine displays
- Glendenning controls
- Single lever controls
- Port and starboard bench seats
- Port and starboard tackle drawers
- Molded in overhead rod storage
- Ez2CY hard 3 sided enclosure with U-zip vents
- Molded in lights under hardtop
- Ritchie compass
- Centerline sliding cabin door

Electronics

- Furuno Navnet VX2 GPS/sounder/radar, 2014
- Northstar 952X GPS/plotter, backup
- Simrad AP24 autopilot, 2014
- Icom IC-M506 VHF radio, 2014
- Pioneer stereo remote
- ACR spotlight control
- Sea Fire fire suppression monitor system
- Cummins main engine displays
- Glendenning control system
- Flood lights with rheostats
- Windlass remote control

Tower

- Molded hardtop
- Glendenning controls
- Hydraulic wheel steering
- Forward, aft and side spreader lights
- 6 rod aft rail rocket launcher
- Welded fore and aft hand rails
- Molded in lights under main helm hardtop
- Molded in Nav lights
- Horns, mounted tower floor
- 3 sided EZ2CY enclosure
- ACR spotlight, mounted tower floor

Tower Electronics

- Navnet VX-2 screen
- Standard Horizon Eclipse VHF radio
- Compass

Engine Room

- **In September 2015, both engines were completely overhauled by Florida Marine Tech, an authorized Cummins dealer**
- Twin QSM II 635 HP Cummins engines
- 9kw Northern Lights generator
- Eskimo ice machine, new 8/2014
- Main engines & transmissions plumbed with quick disconnect for oil change system
- Generator plumbed with quick disconnect for oil change system
- Headhunter washdown pump
- Battery disconnect switches
- Dripless shaft logs with spare collars
- Racor primary fuel filters, mains and gen
- Marine Air A/C system
- Mastervolt Chargemaster battery charger
- Port and Starboard battery banks
- Manual battery parallel switch
- Shurflow live well pump
- D/C fresh water pump
- Sea Fire 1301 automatic fire system
- Marine exhaust system
- Lighting throughout

- Aluminum access ladder

Remarks

Coffee Break was custom built for her original owner to get the most out of the already proven Liberty hull. She was outfitted with Cummins QSM-11 engines and a Northern Lights generator, both fuel efficient and dependable packages. **In September 2015, both main engines were completely overhauled by Florida Marine Tech, an authorized Cummins dealer.** Her centerline helm gives excellent visibility and both port and starboard bench seats makes it a breeze to store all your fishing gear. She is even equipped with an Eskimo ice machine and dedicated insulated ice storage box. Easy to see, call today to inspect for yourself.

Exclusions

Owner's personal belongings.

Disclaimer

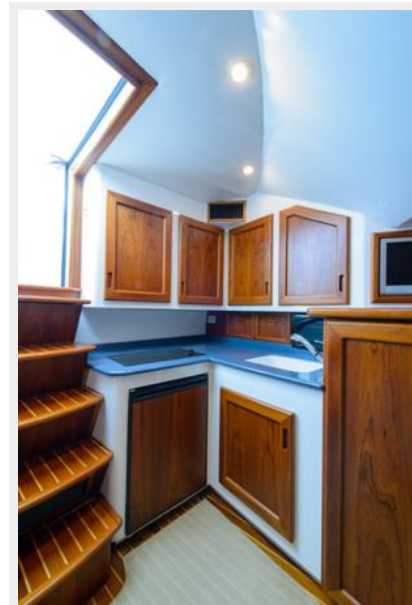
The Company offers the details of this vessel or yacht in good faith but cannot guarantee or warrant the accuracy of this information nor warrant the condition of the vessel. A buyer should instruct his representatives, agents, or his surveyors, to investigate such details as the buyer desires validated. This vessel or yacht is offered subject to prior sale, price change, or withdrawal without notice.

PHOTOS

Cabin



Cabin



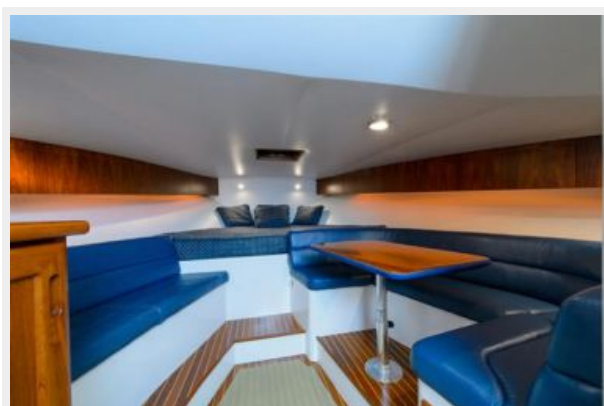
Accommodations/Berth



Accommodations/Berth



Accommodations/Berth



Accommodations/Berth



Accommodations/Berth



Head



Bridge Deck



Bridge Deck



Bridge Deck



Bridge Deck



Bridge Deck



Cockpit



Cockpit



Cockpit



Cockpit



Cockpit



Cockpit



Tower



Engine Room



Engine Room



Engine Room

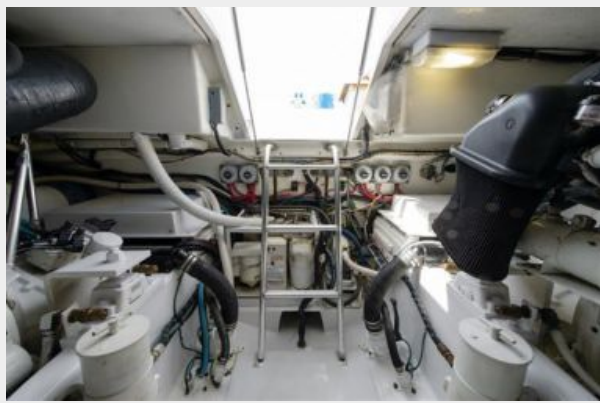


Engine Room



Coffee Break

Engine Room



Coffee Break



Coffee Break



Coffee Break



CONTACTS

Andrey Shestakov, leading yacht broker of the sales department of Shestakov Yacht Sales Inc. Shestakov Yacht Sales Inc., the official representative of the Miami/Fort Lauderdale FL headquarters.

Contact details

Email: **andrey@shestakovyachtsales.com**

Web: shestakovyachtsales.com/en/

Telephones

USA: **+1(954)274-4435**

Office hours

Monday – Saturday: **9:00 - 21:00 EDT**

Sunday: **closed**

Address



Harbour Towne Marina, 850 NE 3rd St,
STE 213, Dania, FL 33004