

## COFFEE BREAK — LIBERTY YACHTS



**Судостроитель:** LIBERTY YACHTS

**Год постройки:** 2002

**Модель:** Катер для спортивной рыбалки

**Цена:** **ЦЕНА ЯХТЫ ПО ЗАПРОСУ**

**Местонахождение:** United States

**Длина общая:** 38' 0" (11.58m)

**Ширина:** 14' 10" (4.52m)

**Мин. осадка:** 3' 8" (1.12m)

Купить **Coffee Break — LIBERTY YACHTS** а также выбрать подходящую вам яхту из нашего каталога яхт вам поможет опытный яхтенный брокер Андрей Шестаков. На сегодняшний день компания **Shestakov Yacht Sales Inc.** имеет большое количество яхт в собственном списке продаж, а также тесно сотрудничает со всеми крупными яхтенными производителями по всему миру.

Для того чтобы купить яхту **Coffee Break — LIBERTY YACHTS** а также проконсультироваться по любому вопросу связанному с покупкой, продажей, чартером яхт позвоните по телефону **+7(918)465-66-44**.

# ОГЛАВЛЕНИЕ

---

ОГЛАВЛЕНИЕ	2
ХАРАКТЕРИСТИКИ	5
Основная информация	5
Размеры	5
Скорость, вместимость и масса	5
Размещение	5
Корпус и палуба	5
Информация о двигателе	5
ПОДРОБНОЕ ОПИСАНИЕ	6
Walkthrough	6
Cabin	6
Entertainment Center	6
Galley	6
Accommodations/Berth	7
Head/Shower	7
Deck and Hull	7
Cockpit	7
Bridge Deck	8
Electronics	8
Tower	9
Tower Electronics	9
Engine Room	9
Remarks	10
Исключения	10
Отказ от ответственности	10
ФОТОГРАФИИ	11
Cabin	11
Cabin	11

---

Accommodations/Berth	11
Accommodations/Berth	11
Accommodations/Berth	11
Accommodations/Berth	11
Head	12
Accommodations/Berth	12
Bridge Deck	12
Bridge Deck	12
Bridge Deck	13
Bridge Deck	13
Bridge Deck	13
Cockpit	13
Cockpit	13
Cockpit	13
Cockpit	14
Cockpit	14
Cockpit	14
Tower	14
Engine Room	14
Engine Room	14
Engine Room	15
Engine Room	15
Coffee Break	15
Engine Room	15
Coffee Break	16
Coffee Break	16
Coffee Break	16
КОНТАКТЫ	17
Контактная информация	17

---

---

Телефоны	17
Время работы	17
Адрес	17

# ХАРАКТЕРИСТИКИ

## Основная информация

**Тип судна:** Катер для спортивной рыбалки

**Модельный год:** 2003

**Год постройки:** 2002

**Страна:** United States

## Размеры

**Длина общая:** 38' 0" (11.58m)

**Ширина:** 14' 10" (4.52m)

**Мин. осадка:** 3' 8" (1.12m)

## Скорость, вместимость и масса

**Вместимость воды:** 170 Gallons

**Объем топливного бака:** 585 Gallons

## Размещение

**Всего кают:** 1

## Корпус и палуба

**Материал корпуса:** Fiberglass

## Информация о двигателе

**Двигатели:** 2

**Производитель:** Cummins

**Модель:** QSM-11

**Тип двигателя:** Inboard

**Тип топлива:** Diesel

---

# ПОДРОБНОЕ ОПИСАНИЕ

---

## Walkthrough

---

The Coffee Break features a center helm station with bench seats port and starboard. Her cabin door is centerline as well with galley located to port and head with shower to starboard. The dinette is to starboard and comfortably seats 4, the dinette also converts to a bunk. Forward is a large V-berth that will comfortably sleep 2.

## Cabin

---

- Teak & holly sole with bound carpet covering
- Teak & holly entranceway steps with storage
- Bench seat to port with storage below
- Dinette with teak table to starboard with storage below
- Clear dinette table cover
- Dinette also converts to additional berth
- Concealed rod storage port & starboard, outboard
- Centerline single Bowmar hatch
- Cedar lined hanging locker
- 3 drawer storage beneath dinette seating
- Lighting throughout
- Marine Air A/C, replaced 7/2014

## Entertainment Center

---

- Sharp LC-15A2 television
- Farenheit DVD-10 disc player
- Pioneer CDX-P680 multi disc player
- Alpine VPE-V180A VHS player
- Pioneer AM/FM stereo
- Standard Horizon VHF radio

## Galley

---

- Galley is located below to port
- Molded Corian countertops and sink
- Princess 2 burner flush mounted cooktop
- Proctor Silex microwave
- Stainless lined refrigerator

- Abundant of shelf storage throughout
- Ships main AC/DC electrical panel
- Fuel and water level indicator
- Gen hour meter

---

## Accommodations/Berth

---

- Centerline V-berth with storage below
- Reading lamps
- Stereo speakers
- Dinette converts to berth

---

## Head/Shower

---

- The head and shower are located below to starboard.
- Make up mirror above
- Sliding door vanity behind sink
- Molded Corian countertop and sink
- Teak credenza below with storage
- Teak and holly sole
- Raritan electric head
- Separate stall shower with sliding door
- Bench seat in shower
- Sliding teak head door

---

## Deck and Hull

---

- Lewmar windlass
- Storage/anchor locker in foredeck
- Aluminum bow rail
- Single Bowmar deck hatch
- White hull color
- Black boot top
- Black bottom paint
- Transom door
- Bennett trim tabs

---

## Cockpit

---

- Molded in transom box, plumbed as livewell

- Transom door
- Port and starboard gaff lockers
- Fresh and salt water washdown
- Insulated ice box for ice chipper
- Bait freezer
- Cockpit engine room access, centerline
- Floor mounted fishboxes, port and starboard
- Stereo speakers
- Flush mounted rod holders
- Aft rail mounted rocket launcher, aft hardtop
- 6 Clearing rod holders, tower legs
- Fighting chair, currently in storage

## Bridge Deck

---

- Centerline helm console with cover
- Helm chair with 4" pedestal
- Cummins engine displays
- Glendenning controls
- Single lever controls
- Port and starboard bench seats
- Port and starboard tackle drawers
- Molded in overhead rod storage
- Ez2CY hard 3 sided enclosure with U-zip vents
- Molded in lights under hardtop
- Ritchie compass
- Centerline sliding cabin door

## Electronics

---

- Furuno Navnet VX2 GPS/sounder/radar, 2014
- Northstar 952X GPS/plotter, backup
- Simrad AP24 autopilot, 2014
- Icom IC-M506 VHF radio, 2014
- Pioneer stereo remote
- ACR spotlight control
- Sea Fire fire suppression monitor system
- Cummins main engine displays
- Glendenning control system
- Flood lights with rheostats
- Windlass remote control



---

## Tower

---

- Molded hardtop
- Glendenning controls
- Hydraulic wheel steering
- Forward, aft and side spreader lights
- 6 rod aft rail rocket launcher
- Welded fore and aft hand rails
- Molded in lights under main helm hardtop
- Molded in Nav lights
- Horns, mounted tower floor
- 3 sided EZ2CY enclosure
- ACR spotlight, mounted tower floor

---

## Tower Electronics

---

- Navnet VX-2 screen
- Standard Horizon Eclipse VHF radio
- Compass

---

## Engine Room

---

- **In September 2015, both engines were completely overhauled by Florida Marine Tech, an authorized Cummins dealer**
- Twin QSM II 635 HP Cummins engines
- 9kw Northern Lights generator
- Eskimo ice machine, new 8/2014
- Main engines & transmissions plumbed with quick disconnect for oil change system
- Generator plumbed with quick disconnect for oil change system
- Headhunter washdown pump
- Battery disconnect switches
- Dripless shaft logs with spare collars
- Racor primary fuel filters, mains and gen
- Marine Air A/C system
- Mastervolt Chargemaster battery charger
- Port and Starboard battery banks
- Manual battery parallel switch
- Shurflow live well pump
- D/C fresh water pump
- Sea Fire 1301 automatic fire system
- Marine exhaust system
- Lighting throughout

- Aluminum access ladder

## Remarks

---

Coffee Break was custom built for her original owner to get the most out of the already proven Liberty hull. She was outfitted with Cummins QSM-11 engines and a Northern Lights generator, both fuel efficient and dependable packages. **In September 2015, both main engines were completely overhauled by Florida Marine Tech, an authorized Cummins dealer.** Her centerline helm gives excellent visibility and both port and starboard bench seats makes it a breeze to store all your fishing gear. She is even equipped with an Eskimo ice machine and dedicated insulated ice storage box. Easy to see, call today to inspect for yourself.

## Исключения

---

При продаже яхты исключаются личные вещи владельца.

## Отказ от ответственности

---

Компания предоставляет описание судна или яхты добросовестно, но не может гарантировать точность этой информации, а также не ручается за техническое состояние. Покупатель должен проинструктировать своих агентов или оценщиков исследовать представленную информацию более подробно, по собственному желанию. Продажа судна или яхты, изменение цены или снятие с продажи будет происходить без предварительного уведомления.

# ФОТОГРАФИИ

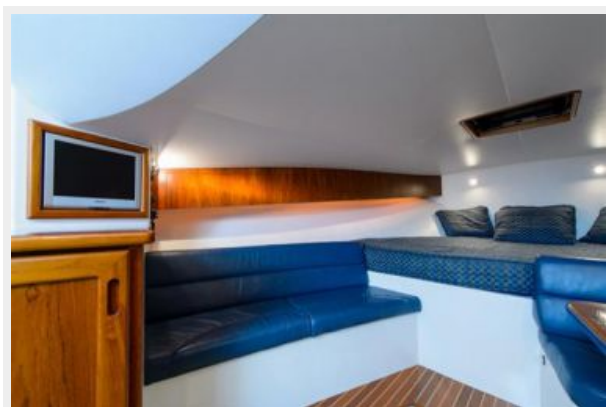
Cabin



Cabin



Accommodations/Berth



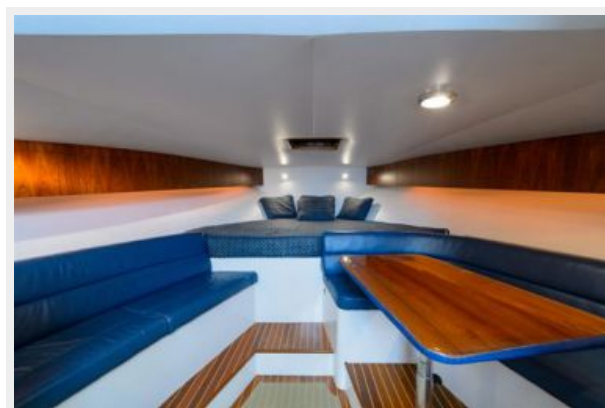
Accommodations/Berth



Accommodations/Berth



Accommodations/Berth



### Accommodations/Berth



### Head



### Bridge Deck



### Bridge Deck



**Bridge Deck**



**Bridge Deck**



**Bridge Deck**



**Cockpit**



**Cockpit**



**Cockpit**





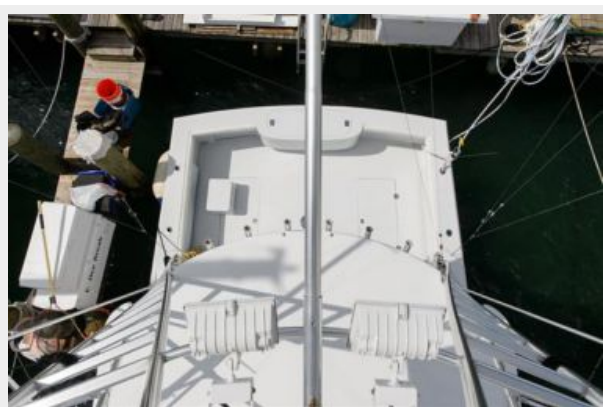
**С cockpit**



**С cockpit**



**С cockpit**



**Тower**



**Engine Room**



**Engine Room**



**Engine Room**



**Engine Room**



**Engine Room**



**Coffee Break**



**Coffee Break**



**Coffee Break**



**Coffee Break**





# КОНТАКТЫ

---

Андрей Шестаков (Andrey Shestakov) – ведущий яхтенный брокер отдела продаж яхт и судов компании Shestakov Yacht Sales Inc. Официальный представитель Shestakov Yacht Sales Inc. для русскоговорящих клиентов в центральном офисе компании в Майами/Форт Лодердейл/Флорида/США.

## Контактная информация

---

Email: [andrey@shestakovyachtsales.com](mailto:andrey@shestakovyachtsales.com)

Web: [shestakovyachtsales.com](http://shestakovyachtsales.com)

## Телефоны

---

Краснодарский край: **+7(918)465-66-44**

США, Майами, Флорида: **+1(954)274-4435**

## Время работы

---

Понедельник – Суббота: **9:00 - 21:00**  
EDT

Воскресенье: **Закрито**

## Адрес

---



Harbour Towne Marina, 850 NE 3rd St,  
STE 213, Dania, FL 33004