

## TRYSTING PLACE TOO — BURGER



**Builder:** BURGER

**Year Built:** 1982

**Model:** Motor Yacht

**Price:** PRICE ON APPLICATION

**Location:** United States

**LOA:** 80' 0" (24.38m)

**Beam:** 18' 6" (5.64m)

**Min Draft:** 5' 5" (1.65m)

**Cruise Speed:** 16 Kts. (18 MPH)

**Max Speed:** 20 Kts. (23 MPH)

Our experienced yacht broker, Andrey Shestakov, will help you choose and buy a yacht that best suits your needs **TRYSTING PLACE TOO — BURGER** from our catalogue. Presently, at Shestakov Yacht Sales Inc., we have a wide variety of yachts available on our sale's list. We also work in close contact with all the big yacht manufacturers from all over the world.

If you would like to buy a yacht **TRYSTING PLACE TOO — BURGER** or would like help answering any questions concerning purchasing, selling or chartering a yacht, please call **+1(954)274-4435**

# TABLE OF CONTENTS

---

TABLE OF CONTENTS	2
SPECIFICATIONS	4
Overview	4
Basic Information	4
Dimensions	4
Speed, Capacities and Weight	4
Accommodations	4
Hull and Deck Information	5
Engine Information	5
DETAILED INFORMATION	6
Accommodations	6
Lower Level Staterooms	6
Crew Quarters	6
Engine Room	7
Main Deck Walkthrough	7
Pilothouse Electronics	7
Galley Appliances	7
Additional Appliances	8
Flybridge/Boat Deck	8
Flybridge Electronics	8
Deck Equipment	8
Engine/Mechanical Equipment	8
Electrical System	9
Comments	9
Exclusions	9
Exclusions	9
Disclaimer	9
PHOTOS	11

---

Aft Deck	11
Aft Deck	11
Lower Aft Deck	11
Salon	11
Salon	11
Bar	11
Galley	12
Galley	12
Pilothouse	12
Galley	12
Pilothouse Helm	12
Master Stateroom	12
Master Stateroom	13
Master Stateroom	13
Guest Stateroom	13
Master Head	13
Guest Stateroom	13
Guest Stateroom	13
Guest Head	14
Flybridge	14
Engine	14
CONTACTS	15
Contact details	15
Telephones	15
Office hours	15
Address	15

---

# SPECIFICATIONS

---

## Overview

---

**TRYSTING PLACE TOO** is a classic **Burger** in fine condition. Her semi-Raised Pilothouse profile is beautifully proportioned and with her open aft and cockpit deck she offers a beautiful platform for island and coastal cruiser

## Basic Information

---

**Category:** Motor Yacht

**Sub Category:** Flybridge

**Model Year:** 1982

**Year Built:** 1982

**Country:** United States

**Vessel Top:** Hardtop

**Fly Bridge:** Yes

## Dimensions

---

**LOA:** 80' 0" (24.38m)

**Beam:** 18' 6" (5.64m)

**Min Draft:** 5' 5" (1.65m)

## Speed, Capacities and Weight

---

**Cruise Speed:** 16 Kts. (18 MPH)

**Max Speed:** 20 Kts. (23 MPH)

**Water Capacity:** 1250 Gallons

**Fuel Capacity:** 3740 Gallons

## Accommodations

---

**Total Cabins:** 3

---

## Hull and Deck Information

---

**Hull Material:** Aluminum

---

## Engine Information

---

**Engines:** 2

**Manufacturer:** Detroit Diesel

**Model:** 12V71 TI

**Engine Type:** Inboard

**Fuel Type:** Diesel

---

# DETAILED INFORMATION

---

## Accommodations

---

**TRYSTING PLACE TOO** offers three double staterooms aft, each with ensuite head and shower. There are separate crew quarters forward for three and access to the full width, stand-up engine room is from the crew quarters. The pilothouse is raised a few steps above the main deck level amidships, with access to the flybridge area to port. The main deck includes both inside and outside salons while the country kitchen style galley is forward and down a few steps from the pilothouse. The cockpit aft, was added to the yacht in the 1980's. All work was closely supervised by the Burger Boat Company and performed by the Spencer Boat Company(now Rybovich Marine) in West Palm Beach, Florida.

## Lower Level Staterooms

---

### MASTER CABIN:

The full width master cabin is aft with a walk around queen sized berth and bedside tables port and starboard which are integral to built-in bureaus on each side of the stateroom. Opening port lights are to port and starboard. Large linen drawers are built-in beneath the bed. Cedar lined, his and hers closets are outboard forward. TV and entertainment center are furnished in the master stateroom. A concealed escape hatch in the aft bulkhead opens to the lazarette compartment. The master stateroom head is forward to port and includes a lighted vanity with large mirror, towel bars, granite counter with under-mounted sink, tiled sole, and a glass enclosed shower.

### PORT & STARBOARD GUEST CABINS:

The two guest cabins, nearly mirror image of each other, are forward from the master. Both staterooms are furnished with twin lower berths, opening port lights, and bedside bureaus between the berths. Each stateroom has a cedar hanging locker as well as large drawers beneath each bed. Each is furnished with its own head with full amenities including a stall shower.

## Crew Quarters

---

Crew accommodations are all the way forward, accessed from the galley/dining salon. An overhead deck hatch provides access to the foredeck. There is a stacked washer/dryer. Aft to starboard is the crew head with stall shower. Opposite to port is the crew lounge. Access to the engine room is aft from the crew quarters through a watertight door.

---

## Engine Room

---

The engine room is full width and has full standing headroom. In 2009 the main engines were overhauled by Western Branch Diesel and have approximately 600 hours on them since the overhaul. At the same time both of the 25kw Westerbeke generators were rebuilt. The engine room is typical Burger with logical arrangement and easy access to all equipment.

---

## Main Deck Walkthrough

---

Access to the yacht is through mid-ship boarding gates port and starboard to the open side decks. Aft along the side decks are wing doors into the main salon or one can enter the pilothouse on either side amidship through sliding doors. Forward along the side decks is the spacious foredeck with raised bulwarks and a continuous stainless and teak hand rail up around the bow. There is a watertight deck hatch centered on the foredeck leading down to the crew quarters and just forward is the anchor windlass. A built-in bench seat is positioned on the forward end of the deckhouse with storage under. The **Raised Pilothouse** spans the width of the yacht exclusive of the side decks and has a bench seat aft for captain and companion seating. Chart drawers are below the bench seat and to port from the centered helm station. Access to the flybridge is aft to port. The country kitchen styled **Galley** is forward and down a few steps(to starboard) from the pilothouse and the crew quarters forward and down from the galley level. Aft from the pilothouse is the full width **Main Salon** with a wet bar built-in along its forward bulkhead. Lounge seating is aft to port and a formal dining area is aft to starboard. Stairs to starboard just forward of the dining table lead down the owner and guest staterooms.

From the Main Salon aft through a full-length sliding glass door is the teak decked **Aft Salon**. Outside seating on this deck affords clear viewing of the water and is protected by side coamings and a varnished teak railing aft. A center opening in the rail and built-in steps lead down to the aft cockpit deck.

---

## Pilothouse Electronics

---

Simrad Autopilot AP50 Simrad Rudder Angle Indicator R135 Wesmar Bow Thruster Kobelt Jog Steering Naiad Stabilizers Sea 223 SSB radio Datamarine Navigator knotlog Datamarine Depth indicator and alarm Bogen Intercom Magnavox 4102 ICOM ICM412 VHF radio Tremble NavTrac XL GPS FiQuench MK III fire control system Magnetic Compass 9" Chelsea Clock and Barometer

---

## Galley Appliances

---

Hotpoint Refrigerator GE dishwasher GE Microwave GE Convection oven KitchenAid Coffee maker Toaster oven Stainless steel sink with disposal Varnished cherry cabinet faces Central Vacuum system

---

## Additional Appliances

---

Central Vacuum system Scotsman Refrigerator U-Line ice maker Jennair cooktop

---

## Flybridge/Boat Deck

---

Accessed by stairs from the Pilothouse, the flybridge offers upper helm steering with helm and companion chairs and full instrumentation forward. Aft is built-in bench seating with storage beneath and a pedestal mounted table. Dividing the bench seating is the radar mast and cabinet. Aft of the bench seating is the boat deck with dual davits and the yacht's tenders.

---

## Flybridge Electronics

---

Controls for engines, stabilizers, bow thruster, air horns, engine synchronizer Simrad Rudder indicator Danforth Compass Furuno NavNet monitor with C-Map NT Northstar 6000i GPS Datamarine depth and speed indicator Simrad handheld autopilot controller ICOM IC M127 VHF radio Kobelt Jog steering control

---

## Deck Equipment

---

Bimini Top by Pipewelders Dual Kahlenberg air horns Dual electric horns Carlisle and Finch searchlight Aft facing searchlight on mast Bogen intercom system Mast hinge Two pedestal mounted Pompanette helm chairs with covers Blue canvas cushions Two Marquip electric low profile tender davits Quartz halogen docking and security lights(3) Ideal anchor windlass Single thru-deck anchor hawse Danforth 90 lb self stowing anchor with 300' chain Hullside anchor pocket Spare Danforth anchors(2) Anchor davit & tackle Teak decks aft; painted non-skid decks forward Side boarding aluminum ladder Marquip Tide Ride sea stairs Marquip passarelle Extended length swim platform with transom door access to cockpit White Awlgrip paint job, 2013 Fresh water washdowns(3) Givens Life raft in canister Two life rings Life jackets (minimum of 12) Fenders and lines Pilothouse window sun covers Aft cockpit sunshade 13' Hard Bottom Inflatable tender with outboard

---

## Engine/Mechanical Equipment

---

GM 12V71TI main engines, 800 hp each, approximately 600 hours since overhaul 30 GPH fuel consumption @1500 rpms with 1 generator 65 GPH fuel consumption @2200 rpms with 1 generator Main engines fitted with double Racor filters with vacuum gauges Airseps Fresh water cooling Hynautic controls, pilothouse and flybridge Emergency engine stops Engine alarms Bilge, sump, and holding tank alarms Hydraulic steering Twin Disc transmissions Automatic Fiquench Mark III fire control system Two high capacity blowers in engine toom Two Automatic Rule 32V bilge pumps, 1500 GPS and 2000 GPS Oberdorfer 9000 emergency bilge pump Five



Sealand vacuum flush marine toilets Holding tank Thermal and acoustic insulation 20 gallon lube oil reserve oil tank with deck fill Fuel transfer system Two 32 X 30 4 blade spare props 2 ¾" stainless steel propeller shafts One spare stub shaft Naiad stabilizers Engine room instrumentation Village 600 gpd watermaker 8 Cruisair reverse cycle air conditioning units with condensation trays Kahlenberg air compressor and dual horns Shaft spurs 3740 gallon fuel capacity as follows: 1,495 main, 645 reserve, 1,600 cockpit tanks(3) 1,250 gallon water capacity in two tanks Rudders upgraded 1988 to Hargrave designed foil rudders built by Derecktors

---

## Electrical System

---

110V, 220V AC electrical system 12V & 32V DC electrical system Two 32V battery banks in lazarette Two 12V battery banks in engine room LaMarch 12V & 32V Constavolt battery chargers Two Stabiline Voltage regulators Two 25kw Westerbeke generators rebuilt 2009 Emergency shutdowns in pilothouse 15kw Westerbeke generator in lazarette Two 50' Hubbell 50 amp shore power cords with port, starboard, and aft connections 50' Hubbell phone cord Numerous Hubbell electrical adaptors Microtec 32V to 12V converter Engelhard electrolysis(Capac) monitoring system

---

## Comments

---

**TRYSTING PLACE TOO** is a very unique yacht in that she has three private staterooms each with en-suite head and shower. With her country kitchen style galley forward, spacious main salon, and open California deck aft she offers a nice variety of living areas while cruising in comfort. Separate crew quarters, a spacious flybridge, and the added cockpit make **TRYSTING PLACE TOO** the complete Burger yacht. Exterior paint was recently renewed and her varnish is in excellent condition. Her interior woodwork and furnishings reflect the fit and finish one would expect aboard a Burger. **TRYSTING PLACE TOO** is realistically priced and ready to cruise.

---

## Exclusions

---

Accessories, personal items, & artwork

---

## Exclusions

---

Owner's personal belongings.

---

## Disclaimer

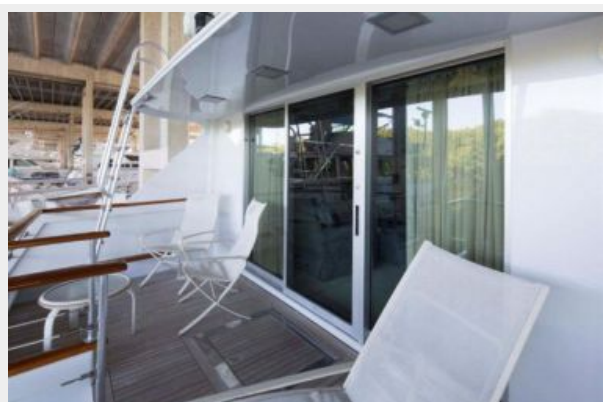
---

The Company offers the details of this vessel or yacht in good faith but cannot guarantee or warrant the accuracy of this information nor warrant the condition of the vessel. A buyer should instruct his representatives, agents, or his surveyors, to investigate such details as the buyer

desires validated. This vessel or yacht is offered subject to prior sale, price change, or withdrawal without notice.

# PHOTOS

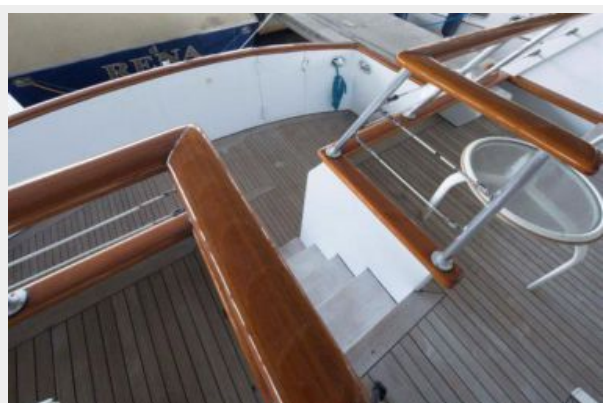
**Aft Deck**



**Aft Deck**



**Lower Aft Deck**



**Salon**



**Salon**



**Bar**



**Galley**



**Galley**



**Galley**



**Pilothouse**



**Pilothouse Helm**



**Master Stateroom**





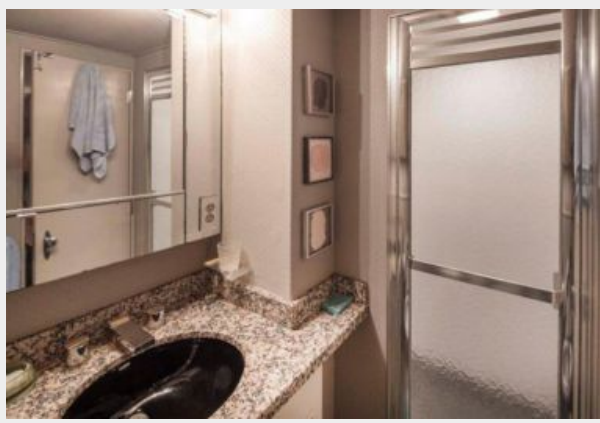
**Master Stateroom**



**Master Stateroom**



**Master Head**



**Guest Stateroom**



**Guest Stateroom**



**Guest Stateroom**



**Guest Head**



**Flybridge**



**Engine**



---

# CONTACTS

---

Andrey Shestakov, leading yacht broker of the sales department of Shestakov Yacht Sales Inc. Shestakov Yacht Sales Inc., the official representative of the Miami/Fort Lauderdale FL headquarters.

---

## Contact details

---

Email: [andrey@shestakovyachtsales.com](mailto:andrey@shestakovyachtsales.com)

Web: [shestakovyachtsales.com/en/](http://shestakovyachtsales.com/en/)

---

## Telephones

---

USA: +1(954)274-4435

---

## Office hours

---

Monday – Saturday: **9:00 - 21:00** EDT

Sunday: **closed**

---

## Address

---



Harbour Towne Marina, 850 NE 3rd St,  
STE 213, Dania, FL 33004