

TRYSTING PLACE TOO — BURGER



Судостроитель: BURGER

Год постройки: 1982

Модель: Моторная яхта

Цена: **ЦЕНА ЯХТЫ ПО ЗАПРОСУ**

Местонахождение: United States

Длина общая: 80' 0" (24.38m)

Ширина: 18' 6" (5.64m)

Мин. осадка: 5' 5" (1.65m)

Крейс. скорость: 16 Kts. (18 MPH)

Макс. скорость: 20 Kts. (23 MPH)

Купить **TRYSTING PLACE TOO — BURGER** а также выбрать подходящую вам яхту из нашего каталога яхт вам поможет опытный яхтенный брокер Андрей Шестаков. На сегодняшний день компания **Shestakov Yacht Sales Inc.** имеет большое количество яхт в собственном списке продаж, а также тесно сотрудничает со всеми крупными яхтенными производителями по всему миру.

Для того чтобы купить яхту **TRYSTING PLACE TOO — BURGER** а также проконсультироваться по любому вопросу связанному с покупкой, продажей, чартером яхт позвоните по телефону **+7(918)465-66-44**.

ОГЛАВЛЕНИЕ

| | |
|-------------------------------|----|
| ОГЛАВЛЕНИЕ | 2 |
| ХАРАКТЕРИСТИКИ | 4 |
| Обзор | 4 |
| Основная информация | 4 |
| Размеры | 4 |
| Скорость, вместимость и масса | 4 |
| Размещение | 4 |
| Корпус и палуба | 5 |
| Информация о двигателе | 5 |
| ПОДРОБНОЕ ОПИСАНИЕ | 6 |
| Accommodations | 6 |
| Lower Level Staterooms | 6 |
| Crew Quarters | 6 |
| Engine Room | 7 |
| Main Deck Walkthrough | 7 |
| Pilothouse Electronics | 7 |
| Galley Appliances | 7 |
| Additional Appliances | 8 |
| Flybridge/Boat Deck | 8 |
| Flybridge Electronics | 8 |
| Deck Equipment | 8 |
| Engine/Mechanical Equipment | 8 |
| Electrical System | 9 |
| Comments | 9 |
| Exclusions | 9 |
| Исключения | 9 |
| Отказ от ответственности | 9 |
| ФОТОГРАФИИ | 11 |

| | |
|-----------------------|-----------|
| Aft Deck | 11 |
| Aft Deck | 11 |
| Lower Aft Deck | 11 |
| Salon | 11 |
| Salon | 11 |
| Bar | 11 |
| Galley | 12 |
| Galley | 12 |
| Pilothouse | 12 |
| Galley | 12 |
| Pilothouse Helm | 12 |
| Master Stateroom | 12 |
| Master Stateroom | 13 |
| Master Stateroom | 13 |
| Guest Stateroom | 13 |
| Master Head | 13 |
| Guest Stateroom | 13 |
| Guest Stateroom | 13 |
| Guest Head | 14 |
| Flybridge | 14 |
| Engine | 14 |
| КОНТАКТЫ | 15 |
| Контактная информация | 15 |
| Телефоны | 15 |
| Время работы | 15 |
| Адрес | 15 |

ХАРАКТЕРИСТИКИ

Обзор

TRYSTING PLACE TOO is a classic Burger in fine condition. Her semi-Raised Pilothouse profile is beautifully proportioned and with her open aft and cockpit deck she offers a beautiful platform for island and coastal cruiser

Основная информация

Тип судна: Моторная яхта

Подкатегория: Flybridge

Модельный год: 1982

Год постройки: 1982

Страна: United States

Верх: Hardtop

Открытая палуба мостика: Да

Размеры

Длина общая: 80' 0" (24.38m)

Ширина: 18' 6" (5.64m)

Мин. осадка: 5' 5" (1.65m)

Скорость, вместимость и масса

Крейс. скорость: 16 Kts. (18 MPH)

Макс. скорость: 20 Kts. (23 MPH)

Вместимость воды: 1250 Gallons

Объем топливного бака: 3740 Gallons

Размещение

Всего кают: 3

Корпус и палуба

Материал корпуса: Aluminum

Информация о двигателе

Двигатели: 2

Производитель: Detroit Diesel

Модель: 12V71 T1

Тип двигателя: Inboard

Тип топлива: Diesel

ПОДРОБНОЕ ОПИСАНИЕ

Accommodations

TRYSTING PLACE TOO offers three double staterooms aft, each with ensuite head and shower. There are separate crew quarters forward for three and access to the full width, stand-up engine room is from the crew quarters. The pilothouse is raised a few steps above the main deck level amidships, with access to the flybridge area to port. The main deck includes both inside and outside salons while the country kitchen style galley is forward and down a few steps from the pilothouse. The cockpit aft, was added to the yacht in the 1980's. All work was closely supervised by the Burger Boat Company and performed by the Spencer Boat Company(now Rybovich Marine) in West Palm Beach, Florida.

Lower Level Staterooms

MASTER CABIN:

The full width master cabin is aft with a walk around queen sized berth and bedside tables port and starboard which are integral to built-in bureaus on each side of the stateroom. Opening port lights are to port and starboard. Large linen drawers are built-in beneath the bed. Cedar lined, his and hers closets are outboard forward. TV and entertainment center are furnished in the master stateroom. A concealed escape hatch in the aft bulkhead opens to the lazarette compartment. The master stateroom head is forward to port and includes a lighted vanity with large mirror, towel bars, granite counter with under-mounted sink, tiled sole, and a glass enclosed shower.

PORT & STARBOARD GUEST CABINS:

The two guest cabins, nearly mirror image of each other, are forward from the master. Both staterooms are furnished with twin lower berths, opening port lights, and bedside bureaus between the berths. Each stateroom has a cedar hanging locker as well as large drawers beneath each bed. Each is furnished with its own head with full amenities including a stall shower.

Crew Quarters

Crew accommodations are all the way forward, accessed from the galley/dining salon. An overhead deck hatch provides access to the foredeck. There is a stacked washer/dryer. Aft to starboard is the crew head with stall shower. Opposite to port is the crew lounge. Access to the engine room is aft from the crew quarters through a watertight door.

Engine Room

The engine room is full width and has full standing headroom. In 2009 the main engines were overhauled by Western Branch Diesel and have approximately 600 hours on them since the overhaul. At the same time both of the 25kw Westerbeke generators were rebuilt. The engine room is typical Burger with logical arrangement and easy access to all equipment.

Main Deck Walkthrough

Access to the yacht is through mid-ship boarding gates port and starboard to the open side decks. Aft along the side decks are wing doors into the main salon or one can enter the pilothouse on either side amidship through sliding doors. Forward along the side decks is the spacious foredeck with raised bulwarks and a continuous stainless and teak hand rail up around the bow. There is a watertight deck hatch centered on the foredeck leading down to the crew quarters and just forward is the anchor windlass. A built-in bench seat is positioned on the forward end of the deckhouse with storage under. The **Raised Pilothouse** spans the width of the yacht exclusive of the side decks and has a bench seat aft for captain and companion seating. Chart drawers are below the bench seat and to port from the centered helm station. Access to the flybridge is aft to port. The country kitchen styled **Galley** is forward and down a few steps (to starboard) from the pilothouse and the crew quarters forward and down from the galley level. Aft from the pilothouse is the full width **Main Salon** with a wet bar built-in along its forward bulkhead. Lounge seating is aft to port and a formal dining area is aft to starboard. Stairs to starboard just forward of the dining table lead down the owner and guest staterooms.

From the Main Salon aft through a full-length sliding glass door is the teak decked **Aft Salon**. Outside seating on this deck affords clear viewing of the water and is protected by side coamings and a varnished teak railing aft. A center opening in the rail and built-in steps lead down to the aft cockpit deck.

Pilothouse Electronics

Simrad Autopilot AP50 Simrad Rudder Angle Indicator R135 Wesmar Bow Thruster Kobelt Jog Steering Naiad Stabilizers Sea 223 SSB radio Datamarine Navigator knotlog Datamarine Depth indicator and alarm Bogen Intercom Magnavox 4102 ICOM ICM412 VHF radio Tremble NavTrac XL GPS FiQuench MK III fire control system Magnetic Compass 9" Chelsea Clock and Barometer

Galley Appliances

Hotpoint Refrigerator GE dishwasher GE Microwave GE Convection oven KitchenAid Coffee maker Toaster oven Stainless steel sink with disposal Varnished cherry cabinet faces Central Vacuum system

Additional Appliances

Central Vacuum system Scotsman Refrigerator U-Line ice maker Jennair cooktop

Flybridge/Boat Deck

Accessed by stairs from the Pilothouse, the flybridge offers upper helm steering with helm and companion chairs and full instrumentation forward. Aft is built-in bench seating with storage beneath and a pedestal mounted table. Dividing the bench seating is the radar mast and cabinet. Aft of the bench seating is the boat deck with dual davits and the yacht's tenders.

Flybridge Electronics

Controls for engines, stabilizers, bow thruster, air horns, engine synchronizer Simrad Rudder indicator Danforth Compass Furuno NavNet monitor with C-Map NT Northstar 6000i GPS Datamarine depth and speed indicator Simrad handheld autopilot controller ICOM IC M127 VHF radio Kobelt Jog steering control

Deck Equipment

Bimini Top by Pipewelders Dual Kahlenberg air horns Dual electric horns Carlisle and Finch searchlight Aft facing searchlight on mast Bogen intercom system Mast hinge Two pedestal mounted Pompanette helm chairs with covers Blue canvas cushions Two Marquip electric low profile tender davits Quartz halogen docking and security lights(3) Ideal anchor windlass Single thru-deck anchor hawse Danforth 90 lb self stowing anchor with 300' chain Hullside anchor pocket Spare Danforth anchors(2) Anchor davit & tackle Teak decks aft; painted non-skid decks forward Side boarding aluminum ladder Marquip Tide Ride sea stairs Marquip passarelle Extended length swim platform with transom door access to cockpit White Awlgrip paint job, 2013 Fresh water washdowns(3) Givens Life raft in canister Two life rings Life jackets (minimum of 12) Fenders and lines Pilothouse window sun covers Aft cockpit sunshade 13' Hard Bottom Inflatable tender with outboard

Engine/Mechanical Equipment

GM 12V71TI main engines, 800 hp each, approximately 600 hours since overhaul 30 GPH fuel consumption @1500 rpms with 1 generator 65 GPH fuel consumption @2200 rpms with 1 generator Main engines fitted with double Racor filters with vacuum gauges Airseps Fresh water cooling Hynautic controls, pilothouse and flybridge Emergency engine stops Engine alarms Bilge, sump, and holding tank alarms Hydraulic steering Twin Disc transmissions Automatic Fiquench Mark III fire control system Two high capacity blowers in engine toom Two Automatic Rule 32V bilge pumps, 1500 GPS and 2000 GPS Oberdorfer 9000 emergency bilge pump Five

Sealand vacuum flush marine toilets Holding tank Thermal and acoustic insulation 20 gallon lube oil reserve oil tank with deck fill Fuel transfer system Two 32 X 30 4 blade spare props 2 3/4" stainless steel propeller shafts One spare stub shaft Naiad stabilizers Engine room instrumentation Village 600 gpd watermaker 8 Cruisair reverse cycle air conditioning units with condensation trays Kahlenberg air compressor and dual horns Shaft spurs 3740 gallon fuel capacity as follows: 1,495 main, 645 reserve, 1,600 cockpit tanks(3) 1,250 gallon water capacity in two tanks Rudders upgraded 1988 to Hargrave designed foil rudders built by Derecktors

Electrical System

110V, 220V AC electrical system 12V & 32V DC electrical system Two 32V battery banks in lazarette Two 12V battery banks in engine room LaMarch 12V & 32V Constavolt battery chargers Two Stabiline Voltage regulators Two 25kw Westerbeke generators rebuilt 2009 Emergency shutdowns in pilothouse 15kw Westerbeke generator in lazarette Two 50' Hubbell 50 amp shore power cords with port, starboard, and aft connections 50' Hubbell phone cord Numerous Hubbell electrical adaptors Microtec 32V to 12V converter Engelhard electrolysis(Сapac) monitoring system

Comments

TRYSTING PLACE TOO is a very unique yacht in that she has three private staterooms each with en-suite head and shower. With her country kitchen style galley forward, spacious main salon, and open California deck aft she offers a nice variety of living areas while cruising in comfort. Separate crew quarters, a spacious flybridge, and the added cockpit make **TRYSTING PLACE TOO** the complete Burger yacht. Exterior paint was recently renewed and her varnish is in excellent condition. Her interior woodwork and furnishings reflect the fit and finish one would expect aboard a Burger. **TRYSTING PLACE TOO** is realistically priced and ready to cruise.

Exclusions

Accessories, personal items, & artwork

Исключения

При продаже яхты исключаются личные вещи владельца.

Отказ от ответственности

Компания предоставляет описание судна или яхты добросовестно, но не может гарантировать точность этой информации, а также не ручается за техническое состояние. Покупатель должен проинструктировать своих агентов или оценщиков

исследовать представленную информацию более подробно, по собственному желанию. Продажа судна или яхты, изменение цены или снятие с продажи будет происходить без предварительного уведомления.

ФОТОГРАФИИ

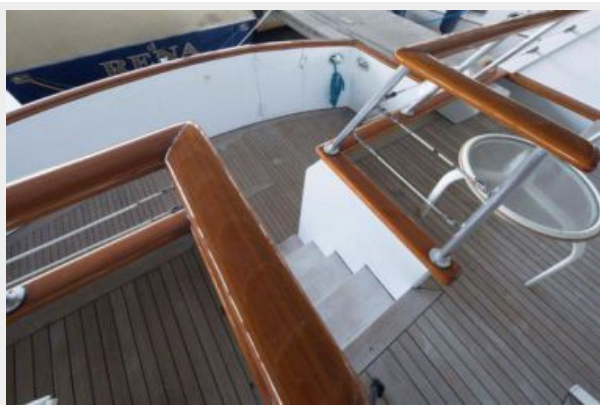
Aft Deck



Aft Deck



Lower Aft Deck



Salon



Salon



Bar



Galley



Galley



Galley



Pilothouse



Pilothouse Helm



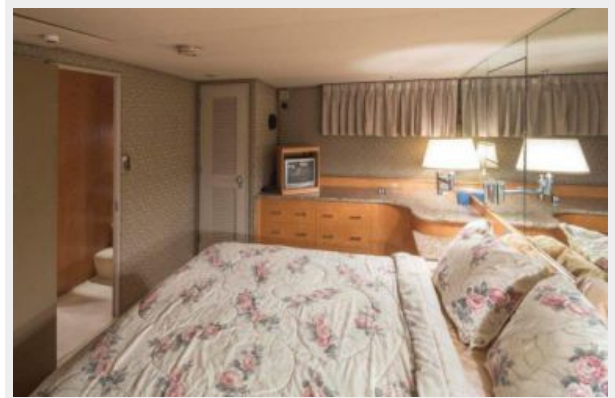
Master Stateroom



Master Stateroom



Master Stateroom



Master Head



Guest Stateroom



Guest Stateroom



Guest Stateroom



Guest Head



Flybridge



Engine



КОНТАКТЫ

Андрей Шестаков (Andrey Shestakov) – ведущий яхтенный брокер отдела продаж яхт и судов компании Shestakov Yacht Sales Inc. Официальный представитель Shestakov Yacht Sales Inc. для русскоговорящих клиентов в центральном офисе компании в Майами/Форт Лодердейл/Флорида/США.

Контактная информация

Email: andrey@shestakovyachtsales.com

Web: shestakovyachtsales.com

Телефоны

Краснодарский край: **+7(918)465-66-44**

США, Майами, Флорида: **+1(954)274-4435**

Время работы

Понедельник – Суббота: **9:00 - 21:00**
EDT

Воскресенье: **Закрито**

Адрес



Harbour Towne Marina, 850 NE 3rd St,
STE 213, Dania, FL 33004