

NO NAME — GRAINGER



Builder: GRAINGER

LOA: 42' 0" (12.80m)

Year Built: 2001

Beam: 22' 6" (6.86m)

Model: Catamaran

Price: PRICE ON APPLICATION

Location: Bahamas

Our experienced yacht broker, Andrey Shestakov, will help you choose and buy a yacht that best suits your needs **NO NAME — GRAINGER** from our catalogue. Presently, at Shestakov Yacht Sales Inc., we have a wide variety of yachts available on our sale's list. We also work in close contact with all the big yacht manufacturers from all over the world.

If you would like to buy a yacht **NO NAME — GRAINGER** or would like help answering any questions concerning purchasing, selling or chartering a yacht, please call **+1(954)274-4435**

TABLE OF CONTENTS

TABLE OF CONTENTS	2
SPECIFICATIONS	3
Overview	3
Basic Information	7
Dimensions	7
Speed, Capacities and Weight	7
Accommodations	8
Hull and Deck Information	8
Engine Information	8
PHOTOS	9
CONTACTS	14
Contact details	14
Telephones	14
Office hours	14
Address	14

SPECIFICATIONS

Overview

If you are looking for a **high performance owner's layout** catamaran with head turning good looks that that will stand out from the crowd of production cats in this size range, this **Grainger Mystery Cove 42** is worth your serious consideration. Designed by renowned Australian multihull designer Tony Grainger and custom built to the highest standards, this is a rare find in North America. Her current owners, who circumnavigated on their previous multihull, embarked on a worldwide search to find her.

She features many upgrades since 2013 including all new sails and rigging, new canvas and upholstery, new solar and wind systems, and much more.

Please take time to view the VIDEOS for a complete visual rendering of this terrific catamaran.

The Grainger 420 is currently located in the Bahamas. Sellers will accommodate interested parties with a try/buy charter in the beautiful Exumas. Contact us for more details. **Engines**
Engine 1: Engine Brand: Yanmar Engine Model: 3gm30fc Engine/Fuel Type: Diesel Engine Hours: 4600 Propeller: Folding propeller Drive Type: Sail drive Engine Power: 27 HP Engine 2: Engine Brand: Yanmar Engine Model: 3gm30fc Engine/Fuel Type: Diesel Engine Hours: 4600 Propeller: Folding propeller Drive Type: Sail drive Engine Power: 27 HP

Accommodations

The Grainger Mystery Cove 42 cockpit features twin helm stations and comfortable seating for 10. Step aft onto a full beam swim platform that leads to sugar scoop steps port and starboard.

The bright and airy bridge deck cabin features 360 degree views and seating for eight in the salon with the nav station to port. The galley is in the starboard hull with ample workspace, refrigeration and storage. Forward in the stbd hull is a queen cabin with ensuite head. Aft of the galley is a crew cabin with double berth.

The port owner's hull feature another queen cabin forward and an owners head with dual sinks and separate shower aft There is a single berth cabin in the forepeak and the midship companionway host lots of storage for books, spares, and artifacts.

Additional Information

DESIGN DETAILS

- Grainger Mystery Cove 420
- Builder: David Howell
- Designer: Tony Grainger

- Year: 2001
- Location: Georgetown, Exuma, Bahamas (free delivery to Florida)
- Length: 12.8 (42 feet)
- Beam 6.857 M (22.6 feet)
- Displacement: 7424 KG (16333 Lbs)
- Sail area: Main + foretriangle = 90.6 Sq Mtr (975 sq. Feet)
- Bridge deck clearance: 850 MM, 33.5"
- Fixed Foils
- 3 double cabins, 1 single, 7 berths

CONSTRUCTION DETAILS

- Hull: Cedar "core" triaxial, biaxial and unidirectional fiberglass (vacuum) with WEST epoxy system
- Bridge deck: Balsa core biaxial fiberglass with WEST epoxy system
- Cabin: Corecell foam, biaxial fiberglass with WEST epoxy system
- Finish: Awlgrip/ Sterling (Linear Polyurethane) Interior and exterior

POWER

- 2ea. Yanmar 27 HP 3gm30fc (4600 hours (Port Engine), 4667 hours (Strb Engine))
- Yanmar saildrives
- 16 inch folding "MAX PROPS"

CAPACITIES

- Diesel: 418 Ltr (110 Gal),
- Water: 608 Ltr (160 Gal),
- Holding: 95 Ltr, (25 Gal)
- LPG: 3x 5kg (in designated locker)

INTERIOR ENHANCEMENTS 2013-14

- Interior Main Salon Upholstery (camel colored leather)
- Black Persian Runner Rugs
- Interior Hatch Screens
- Interior window panel curtains
- Port Hole/Light with Rainscreen Eyebrow and Fan in Port Bow Perth
- Faux Corian Rustoleum Countertop Transformation throughout (Black Marble)

HULL & DECK EQUIPMENT

- 12 Lewmar Ocean Hatches
- Double life lines
- Stanchions 28 inch with integral bases
- 6 ea 12 inch mooring cleats
- Magma gas grill **2013**

- 60 Lb. Manson anchor
- 100m 5/16" Chain attached to 100m 3/4" nylon rode
- Fortress FX-35 Aluminum anchor with 7 m chain and 100m nylon rode
- Dansforth anchor
- Rode: chain 7 m, Line 100 m
- Anchor/deck wash down (fresh)
- Anchor/deck wash down (salt)
- Hot/cold Deck shower
- Stereo Speakers in cockpit/cabin
- LPG storage locker
- Varnished Trim (3 coats)
- Cockpit Awnings (Oyster White) **2013**
- Deck Awnings (Oyster White)**2013**
- 2 Helm Awnings, 1 for each port & starboard helm **2013**
- Helm Cover (Navy) **2013**
- Helm Chair Cover (Oyster White) **2013**
- Hatch Covers (Navy) **2013**
- Winch Covers (Navy) **2013**
- Backdrop Shade Cloth (Navy Stripe) **2013**
- Cockpit Phifertex Cushions: Navy Stripe **2013**
- Cockpit Floor Paint (White) **2013**
- Ablative bottom paint, 2 coats **2014**

SAILS AND RIGGING ALL NEW 2013:

- Selden Mast & Boom
- Crossbeam
- Heavy Duty Chainplates
- Running Rigging
- Oversize Standing Rigging
- Mainsail: Dacron. **New 2013**
- Mack Sails Stackpack **New 2013**
- Genoa: Dacron. **New 2013**
- Reacher/Screacher: On it's own luff "wire" (roller furled) **New 2013**
- Spinnaker: asymmetrical in sock (launch from dedicated locker)

WINCHES AND WINDLASS

- 3 each Lewmar 48 Electric winches
- 2 each Lewmar 48 manual winches
- Maxwell 1500 electric anchor windlass with control at helm
- All lines led aft to electric winches for reefing etc.
- Lewmar Rope clutches, Blocks, tracks, cars
- Tender Lifting derrick integral from boom (electric winch powered)
- Emergency tiller

ELECTRICAL

- 110 volt 60 hz system and 240 volt 50 hz system
- 2500 watt Heart inverter/ charger 110V
- 2000 watt inverter 240V
- 660 amp/hr AGM battery bank
- 2 ea 130 amp alternators (recent rebuild)
- Smart regulator (with backup)
- Link 2000R monitor/control system
- 2500 watt 240V to 110 volt transformer
- Galvanic isolator. Corrosion control
- Electric fuel pumps (emergency)
- Blue Sea 110-240AC and 12V DC panels
- Shore power cords 110/240
- LED anchor/running lights at masthead
- Emergency strobe at mast head
- 2 starter batteries
- Starter battery isolation system
- 2 Wind Generators **New 2014**
- 3 solar cells (135 watt Kyrocera each)w/ solar controller **New 2013**
- 600 total watts of Solar Cells
- 1000 Watt portable Yamaha generator **New 2013**
- 6 cabin fans (Hella)
- Wiring diagrams and numbering code (ships manual)

PLUMBING

- Watermaker 160 Ltr/Hr engine driven (membranes 30 months, Pump rebuilt 12 months)
- 6 gallon hot water heater (engine/AC)
- Filter water system at galley sink for drinking water
- Salt water at galley sink
- Electric toilet (fresh rebuild)
- Electric shower sump pump
- Salt water washdown pump
- Domestic water pump
- Hot cold swim step shower
- Anchor wash

ELECTRONICS

- Icom M802 HF radio
- Icom M502 VHF radio
- Garmin Chart Plotter **New 2014**
- Furuno GPS **New 2014**
- Garmin GPS 76

- Iridium Sat Phone with data modum
- Standard Horizon handheld portable VHF radio (submersible)
- Nexus/Silva sailing instruments (wind, log, depth ...helm and repeated at nav station)
- EPIRB
- Pactor 2 modum
- 2 each completely independent Com Nav Auto pilots (Controls at helm Repeated at nav station)
- AIS system
- Laptop navigation computer with Cmap with on screen AIS visualization
- AM/FM/CD/MP3/DVD player
- 17 inch flat screen TV (connected to sound system)
- Tank level gages

TENDER

- 11' Achilles RIB with 15 horse Yamaha Outboard 2 stroke **New 2014**

Basic Information

Category: Catamaran

Model Year: 2001

Year Built: 2001

Country: Bahamas

Dimensions

LOA: 42' 0" (12.80m)

Beam: 22' 6" (6.86m)

Clearance: 33' 5" (10.19m)

Speed, Capacities and Weight

Displacement: 16333 Pounds

Water Capacity: 160 Gallons

Holding Tank: 25 Gallons

Fuel Capacity: 110 Gallons

Accommodations

Total Cabins: 3

Hull and Deck Information

Hull Material: Fiberglass

Engine Information

Engines: 2

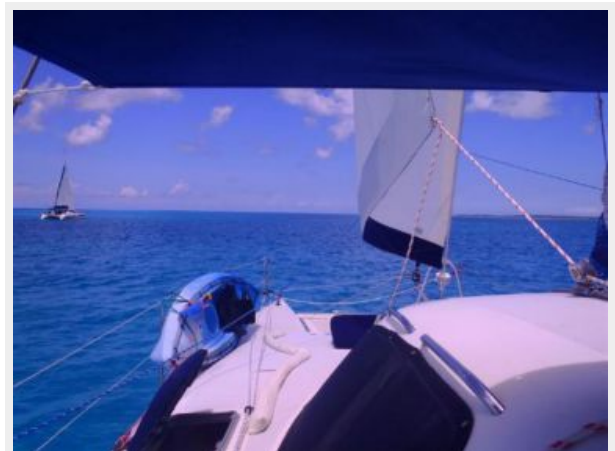
Manufacturer: Yanmar

Model: 3gm30fc

Engine Type: Inboard

Fuel Type: Diesel

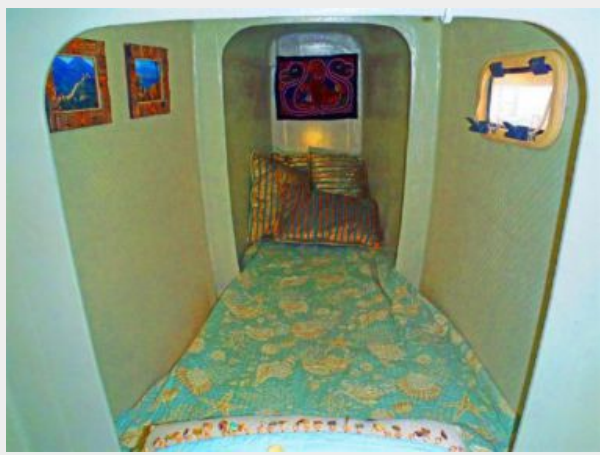
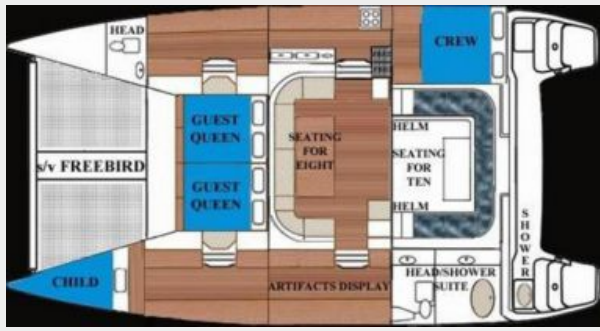
PHOTOS











CONTACTS

Andrey Shestakov, leading yacht broker of the sales department of Shestakov Yacht Sales Inc. Shestakov Yacht Sales Inc., the official representative of the Miami/Fort Lauderdale FL headquarters.

Contact details

Email: andrey@shestakovyachtsales.com

Web: shestakovyachtsales.com/en/

Telephones

USA: +1(954)274-4435

Office hours

Monday – Saturday: **9:00 - 21:00** EDT

Sunday: **closed**

Address



Harbour Towne Marina, 850 NE 3rd St,
STE 213, Dania, FL 33004