

NO NAME — GRAINGER



Судостроитель: GRAINGER

Длина общая: 42' 0" (12.80m)

Год постройки: 2001

Ширина: 22' 6" (6.86m)

Модель: Катамаран

Цена: ЦЕНА ЯХТЫ ПО ЗАПРОСУ

Местонахождение: Bahamas

Купить **NO NAME — GRAINGER** а также выбрать подходящую вам яхту из нашего каталога яхт вам поможет опытный яхтенный брокер Андрей Шестаков. На сегодняшний день компания **Shestakov Yacht Sales Inc.** имеет большое количество яхт в собственном списке продаж, а также тесно сотрудничает со всеми крупными яхтенными производителями по всему миру.

Для того чтобы купить яхту **NO NAME — GRAINGER** а также проконсультироваться по любому вопросу связанному с покупкой, продажей, чартером яхт позвоните по телефону **+7(918)465-66-44**.

ОГЛАВЛЕНИЕ

ОГЛАВЛЕНИЕ	2
ХАРАКТЕРИСТИКИ	3
Обзор	3
Основная информация	7
Размеры	7
Скорость, вместимость и масса	7
Размещение	8
Корпус и палуба	8
Информация о двигателе	8
ФОТОГРАФИИ	9
КОНТАКТЫ	14
Контактная информация	14
Телефоны	14
Время работы	14
Адрес	14

ХАРАКТЕРИСТИКИ

Обзор

If you are looking for a **high performance owner's layout** catamaran with head turning good looks that that will stand out from the crowd of production cats in this size range, this **Grainger Mystery Cove 42** is worth your serious consideration. Designed by renowned Australian multihull designer Tony Grainger and custom built to the highest standards, this is a rare find in North America. Her current owners, who circumnavigated on their previous multihull, embarked on a worldwide search to find her.

She features many upgrades since 2013 including all new sails and rigging, new canvas and upholstery, new solar and wind systems, and much more.

Please take time to view the VIDEOS for a complete visual rendering of this terrific catamaran.

The Grainger 420 is currently located in the Bahamas. Sellers will accommodate interested parties with a try/buy charter in the beautiful Exumas. Contact us for more details. **Engines**
Engine 1: Engine Brand: Yanmar Engine Model: 3gm30fc Engine/Fuel Type: Diesel Engine Hours: 4600 Propeller: Folding propeller Drive Type: Sail drive Engine Power: 27 HP Engine 2: Engine Brand: Yanmar Engine Model: 3gm30fc Engine/Fuel Type: Diesel Engine Hours: 4600 Propeller: Folding propeller Drive Type: Sail drive Engine Power: 27 HP

Accommodations

The Grainger Mystery Cove 42 cockpit features twin helm stations and comfortable seating for 10. Step aft onto a full beam swim platform that leads to sugar scoop steps port and starboard.

The bright and airy bridge deck cabin features 360 degree views and seating for eight in the salon with the nav station to port. The galley is in the starboard hull with ample workspace, refrigeration and storage. Forward in the stbd hull is a queen cabin with ensuite head. Aft of the galley is a crew cabin with double berth.

The port owner's hull feature another queen cabin forward and an owners head with dual sinks and separate shower aft There is a single berth cabin in the forepeak and the midship companionway host lots of storage for books, spares, and artifacts.

Additional Information

DESIGN DETAILS

- Grainger Mystery Cove 420
- Builder: David Howell
- Designer: Tony Grainger

- Year: 2001
- Location: Georgetown, Exuma, Bahamas (free delivery to Florida)
- Length: 12.8 (42 feet)
- Beam 6.857 M (22.6 feet)
- Displacement: 7424 KG (16333 Lbs)
- Sail area: Main + foretriangle = 90.6 Sq Mtr (975 sq. Feet)
- Bridge deck clearance: 850 MM, 33.5"
- Fixed Foils
- 3 double cabins, 1 single, 7 berths

CONSTRUCTION DETAILS

- Hull: Cedar "core" triaxial, biaxial and unidirectional fiberglass (vacuum) with WEST epoxy system
- Bridge deck: Balsa core biaxial fiberglass with WEST epoxy system
- Cabin: Corecell foam, biaxial fiberglass with WEST epoxy system
- Finish: Awlgrip/ Sterling (Linear Polyurethane) Interior and exterior

POWER

- 2ea. Yanmar 27 HP 3gm30fc (4600 hours (Port Engine), 4667 hours (Strb Engine))
- Yanmar saildrives
- 16 inch folding "MAX PROPS"

CAPACITIES

- Diesel: 418 Ltr (110 Gal),
- Water: 608 Ltr (160 Gal),
- Holding: 95 Ltr, (25 Gal)
- LPG: 3x 5kg (in designated locker)

INTERIOR ENHANCEMENTS 2013-14

- Interior Main Salon Upholstery (camel colored leather)
- Black Persian Runner Rugs
- Interior Hatch Screens
- Interior window panel curtains
- Port Hole/Light with Rainscreen Eyebrow and Fan in Port Bow Perth
- Faux Corian Rustoleum Countertop Transformation throughout (Black Marble)

HULL & DECK EQUIPMENT

- 12 Lewmar Ocean Hatches
- Double life lines
- Stanchions 28 inch with integral bases
- 6 ea 12 inch mooring cleats
- Magma gas grill **2013**

- 60 Lb. Manson anchor
- 100m 5/16" Chain attached to 100m 3/4" nylon rode
- Fortress FX-35 Aluminum anchor with 7 m chain and 100m nylon rode
- Dansforth anchor
- Rode: chain 7 m, Line 100 m
- Anchor/deck wash down (fresh)
- Anchor/deck wash down (salt)
- Hot/cold Deck shower
- Stereo Speakers in cockpit/cabin
- LPG storage locker
- Varnished Trim (3 coats)
- Cockpit Awnings (Oyster White) **2013**
- Deck Awnings (Oyster White)**2013**
- 2 Helm Awnings, 1 for each port & starboard helm **2013**
- Helm Cover (Navy) **2013**
- Helm Chair Cover (Oyster White) **2013**
- Hatch Covers (Navy) **2013**
- Winch Covers (Navy) **2013**
- Backdrop Shade Cloth (Navy Stripe) **2013**
- Cockpit Phifertex Cushions: Navy Stripe **2013**
- Cockpit Floor Paint (White) **2013**
- Ablative bottom paint, 2 coats **2014**

SAILS AND RIGGING ALL NEW 2013:

- Selden Mast & Boom
- Crossbeam
- Heavy Duty Chainplates
- Running Rigging
- Oversize Standing Rigging
- Mainsail: Dacron. **New 2013**
- Mack Sails Stackpack **New 2013**
- Genoa: Dacron. **New 2013**
- Reacher/Screacher: On it's own luff "wire" (roller furled) **New 2013**
- Spinnaker: asymmetrical in sock (launch from dedicated locker)

WINCHES AND WINDLASS

- 3 each Lewmar 48 Electric winches
- 2 each Lewmar 48 manual winches
- Maxwell 1500 electric anchor windlass with control at helm
- All lines led aft to electric winches for reefing etc.
- Lewmar Rope clutches, Blocks, tracks, cars
- Tender Lifting derrick integral from boom (electric winch powered)
- Emergency tiller

ELECTRICAL

- 110 volt 60 hz system and 240 volt 50 hz system
- 2500 watt Heart inverter/ charger 110V
- 2000 watt inverter 240V
- 660 amp/hr AGM battery bank
- 2 ea 130 amp alternators (recent rebuild)
- Smart regulator (with backup)
- Link 2000R monitor/control system
- 2500 watt 240V to 110 volt transformer
- Galvanic isolator. Corrosion control
- Electric fuel pumps (emergency)
- Blue Sea 110-240AC and 12V DC panels
- Shore power cords 110/240
- LED anchor/running lights at masthead
- Emergency strobe at mast head
- 2 starter batteries
- Starter battery isolation system
- 2 Wind Generators **New 2014**
- 3 solar cells (135 watt Kyrocera each)w/ solar controller **New 2013**
- 600 total watts of Solar Cells
- 1000 Watt portable Yamaha generator **New 2013**
- 6 cabin fans (Hella)
- Wiring diagrams and numbering code (ships manual)

PLUMBING

- Watermaker 160 Ltr/Hr engine driven (membranes 30 months, Pump rebuilt 12 months)
- 6 gallon hot water heater (engine/AC)
- Filter water system at galley sink for drinking water
- Salt water at galley sink
- Electric toilet (fresh rebuild)
- Electric shower sump pump
- Salt water washdown pump
- Domestic water pump
- Hot cold swim step shower
- Anchor wash

ELECTRONICS

- Icom M802 HF radio
- Icom M502 VHF radio
- Garmin Chart Plotter **New 2014**
- Furuno GPS **New 2014**
- Garmin GPS 76

- Iridium Sat Phone with data modum
- Standard Horizon handheld portable VHF radio (submersible)
- Nexus/Silva sailing instruments (wind, log, depth ...helm and repeated at nav station)
- EPIRB
- Pactor 2 modum
- 2 each completely independent Com Nav Auto pilots (Controls at helm Repeated at nav station)
- AIS system
- Laptop navigation computer with Cmap with on screen AIS visualization
- AM/FM/CD/MP3/DVD player
- 17 inch flat screen TV (connected to sound system)
- Tank level gages

TENDER

- 11' Achilles RIB with 15 horse Yamaha Outboard 2 stroke **New 2014**

Основная информация

Тип судна: Катамаран

Модельный год: 2001

Год постройки: 2001

Страна: Bahamas

Размеры

Длина общая: 42' 0" (12.80m)

Ширина: 22' 6" (6.86m)

Трапы: 33' 5" (10.19m)

Скорость, вместимость и масса

Водоизмещение: 16333 Pounds

Вместимость воды: 160 Gallons

Вместимость сточного бака: 25 Gallons Объем топливного бака: 110 Gallons

Размещение

Всего кают: 3

Корпус и палуба

Материал корпуса: Fiberglass

Информация о двигателе

Двигатели: 2

Производитель: Yanmar

Модель: 3gm30fc

Тип двигателя: Inboard

Тип топлива: Diesel

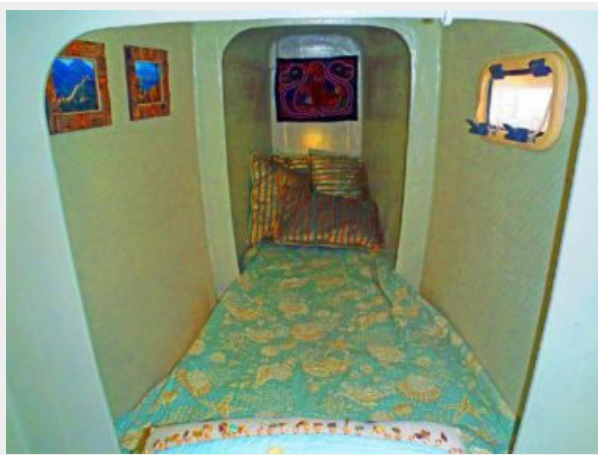
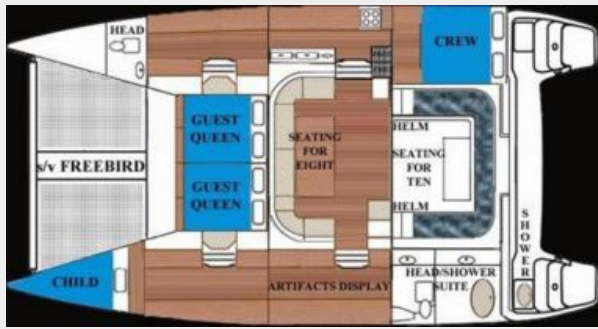
ФОТОГРАФИИ











КОНТАКТЫ

Андрей Шестаков (Andrey Shestakov) – ведущий яхтенный брокер отдела продаж яхт и судов компании Shestakov Yacht Sales Inc. Официальный представитель Shestakov Yacht Sales Inc. для русскоговорящих клиентов в центральном офисе компании в Майами/Форт Лодердейл/Флорида/США.

Контактная информация

Email: andrey@shestakovyachtsales.com

Web: shestakovyachtsales.com

Телефоны

Краснодарский край: **+7(918)465-66-44**

США, Майами, Флорида: **+1(954)274-4435**

Время работы

Понедельник – Суббота: **9:00 - 21:00**
EDT

Воскресенье: **Закрето**

Адрес



Harbour Towne Marina, 850 NE 3rd St,
STE 213, Dania, FL 33004