

TIRE KIKKER — TIARA



Builder: TIARA

Year Built: 2000

Model: Cruiser

Price: PRICE ON APPLICATION

Location: United States

LOA: 31' 0" (9.45m)

Beam: 12' 0" (3.66m)

Min Draft: 3' 0" (0.91m)

Cruise Speed: 25 Kts. (29 MPH)

Max Speed: 35 Kts. (40 MPH)

Our experienced yacht broker, Andrey Shestakov, will help you choose and buy a yacht that best suits your needs **Tire Kikker — TIARA** from our catalogue. Presently, at Shestakov Yacht Sales Inc., we have a wide variety of yachts available on our sale's list. We also work in close contact with all the big yacht manufacturers from all over the world.

If you would like to buy a yacht **Tire Kikker — TIARA** or would like help answering any questions concerning purchasing, selling or chartering a yacht, please call **+1(954)274-4435**

TABLE OF CONTENTS

TABLE OF CONTENTS	2
SPECIFICATIONS	4
Overview	4
Basic Information	4
Dimensions	4
Speed, Capacities and Weight	4
Accommodations	5
Hull and Deck Information	5
Engine Information	5
DETAILED INFORMATION	6
Salon	6
Galley	6
Forward Stateroom	6
Head	6
Helm	6
Electronics	7
Electrical System	7
Mechanical Equipment	7
Engine Room	7
Cockpit/Aft Deck	7
Decks	8
Hull	8
Exclusions	8
Disclaimer	8
PHOTOS	9
CONTACTS	16
Contact details	16
Telephones	16

Office hours	16
Address	16

SPECIFICATIONS

Overview

All Tiara 3100 Opens are classics. Think of this 2000 as a classic with refinement starting with the mast on the arch. Custom made it "fits" and is perfectly proportioned to the 3100's lines. Up to date Garmin HD Radar is another refinement that sets this 3100 a part from others on the market. Newer canvas bimini with strata glass and unique 5 piece aft curtain. Lastly, there is nothing like inside in summer and winter storage to preserve a classic.

Basic Information

Category: Cruiser

Sub Category: open

Model Year: 2000

Year Built: 2000

Country: United States

Vessel Top: 2353

Cockpit: Yes

Dimensions

LOA: 31' 0" (9.45m)

Beam: 12' 0" (3.66m)

Min Draft: 3' 0" (0.91m)

MFG Length: 33' 10" (10.31m)

Speed, Capacities and Weight

Cruise Speed: 25 Kts. (29 MPH)

Cruise Speed RPM: 3200 Kts.

Max Speed: 35 Kts. (40 MPH)

Max Speed RPM: 4250 Kts.

Displacement: 12300 Pounds

Water Capacity: 38 Gallons

Holding Tank: 20 Gallons

Fuel Capacity: 246 Gallons

Accommodations

Total Cabins: 1

Total Berths: 2

Sleeps: 4

Total Heads: 1

Hull and Deck Information

Hull Material: Fiberglass

Engine Information

Engines: 2

Manufacturer: Crusader

Model: 7.4 MPI

Engine Type: Inboard

Fuel Type: Gas

DETAILED INFORMATION

Salon

- Solid teak cabin sole
- U-shaped dinette converts to berth
- Pedestal mount table
- Fiberglass companionway steps with storage below

Galley

- 2 Burner Force 10 Stove top
- Samsung microwave
- Norcold refrigerator
- Stainless steel sink
- Storage

Forward Stateroom

- Skyworth TV on swinging bracket to view from dinette
- Accent lighting
- CO2 detector
- Reading lamp
- Double berth with storage below
- Hanging locker
- 2 Opening port holes with shades

Head

- Vacuflush head
- Combination sink/shower
- Stainless steel sink
- Vanity with storage

Helm

- Engine Instrumentation: tachs, volt meters, fuel gauges, temp gauges, hour meters, oil pressure
- Flow scan fuel flow indicators

- Twin engine controls

Electronics

- Sony AM/FM/CD/DVD
- Garmin HD radar
- Garmin 5212 Display
- Raymarine auto pilot

Electrical System

- 12V and 120V master distribution panel
- 30 amp shore power service
- Two bank 12V battery system
- Battery charger

Mechanical Equipment

- Bilge blowers - 2
- Bilge pumps - 2
- Hot water tank - 6 gal.
- Fire extinguisher system

Engine Room

- Gel batteries
- Dripless shaft seals
- Engine room lights

Cockpit/Aft Deck

- Bridge deck carpet
- Sony remote
- Four rod holders
- Fold down aft seat
- Swim platform with ladder
- Bimini top with enclosure
- Aft curtain - 5 piece
- Radar arch with custom mast

- Self draining cockpit w/ scupper drains
- Two chrome bronze hawse hole deck plates
- Molded-in transom door gate

Decks

- 3 Hatches with canvas privacy covers and screens
- Flush forward anchor locker with overboard drain
- ACR remote spotlight

Hull

- Stringer encapsulated by hand laid frp to hull
- Six stainless steel custom opening port lights w/ screens

Exclusions

Owner's personal belongings.

Disclaimer

The Company offers the details of this vessel or yacht in good faith but cannot guarantee or warrant the accuracy of this information nor warrant the condition of the vessel. A buyer should instruct his representatives, agents, or his surveyors, to investigate such details as the buyer desires validated. This vessel or yacht is offered subject to prior sale, price change, or withdrawal without notice.

PHOTOS

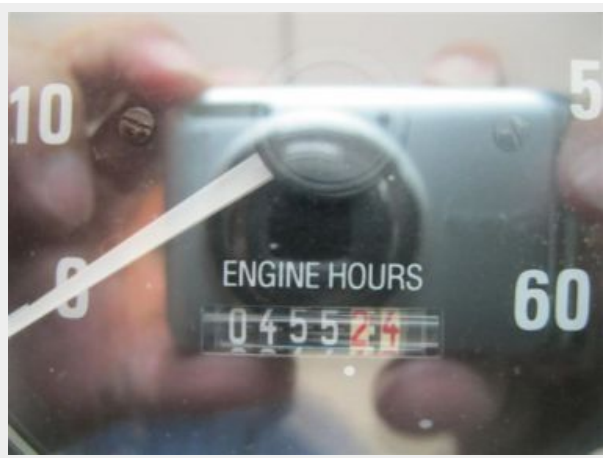














CONTACTS

Andrey Shestakov, leading yacht broker of the sales department of Shestakov Yacht Sales Inc. Shestakov Yacht Sales Inc., the official representative of the Miami/Fort Lauderdale FL headquarters.

Contact details

Email: andrey@shestakovyachtsales.com

Web: shestakovyachtsales.com/en/

Telephones

USA: +1(954)274-4435

Office hours

Monday – Saturday: **9:00 - 21:00** EDT

Sunday: **closed**

Address



Harbour Towne Marina, 850 NE 3rd St,
STE 213, Dania, FL 33004