

## HAWKEYE — OCEAN ALEXANDER



**Судостроитель:** OCEAN ALEXANDER

**Год постройки:** 2010

**Модель:** Моторная яхта

**Цена:** **ЦЕНА ЯХТЫ ПО ЗАПРОСУ**

**Местонахождение:** United States

**Длина общая:** 88' 0" (26.82m)

**Ширина:** 22' 0" (6.71m)

**Макс. осадка:** 6' 0" (1.83m)

**Крейс. скорость:** 16 Kts. (18 MPH)

**Макс. скорость:** 21 Kts. (24 MPH)

Купить **Hawkeye — OCEAN ALEXANDER** а также выбрать подходящую вам яхту из нашего каталога яхт вам поможет опытный яхтенный брокер Андрей Шестаков. На сегодняшний день компания **Shestakov Yacht Sales Inc.** имеет большое количество яхт в собственном списке продаж, а также тесно сотрудничает со всеми крупными яхтенными производителями по всему миру.

Для того чтобы купить яхту **Hawkeye — OCEAN ALEXANDER** а также проконсультироваться по любому вопросу связанному с покупкой, продажей, чартером яхт позвоните по телефону **+7(918)465-66-44**.

# ОГЛАВЛЕНИЕ

ОГЛАВЛЕНИЕ	2
ХАРАКТЕРИСТИКИ	4
Обзор	4
Основная информация	4
Размеры	4
Скорость, вместимость и масса	5
Размещение	5
Корпус и палуба	5
Информация о двигателе	5
ПОДРОБНОЕ ОПИСАНИЕ	6
Accommodations & interior	6
Cockpit & Aftdeck	6
Salon & Dining	7
Galley	7
Skylounge	8
Master Stateroom	8
Guest Stateroom	9
Crew/Guest Quarters	9
Heads	9
Hull, Superstructure & Decks	10
Exterior Hardware & Fittings	10
Electrical	11
Pumping	12
Engine Room & Bilge	12
Additional Options Chosen For This Vessel	13
Disclaimer	15
Исключения	15
Отказ от ответственности	15

---

ФОТОГРАФИИ	16
КОНТАКТЫ	25
Контактная информация	25
Телефоны	25
Время работы	25
Адрес	25

# ХАРАКТЕРИСТИКИ

## Обзор

*Click the VIDEO button for a full tour*

*The seller says this boat must go. Every offer considered. Boat is certified for extended Caterpillar warranties, all service done and recent survey available. Call the Ocean Alexander experts today. Full multiple day program for ships system orientation and review included with any purchase. Town car to and from Sea Tac airport for out of town visits. Come and take a look today.*

*Three large staterooms forward and two cabins aft provide a total of five for comfortable accommodations for owners, guests and crew if desired. A Portuguese bridge adds to the sky lounge's immense practicality providing a full walk around in front of the bridge. The open dining room and salon feel spacious and provide versatility for dining as well as entertaining. Complete with hydraulic bow and stern thrusters along with stabilizers and a wireless yacht controller. New bottom paint and exterior wax, plus all new batteries.*

*Come and take a close look, you will not be disappointed.*

## Основная информация

**Тип судна:** Моторная яхта

**Подкатегория:** Sky Lounge

**Модельный год:** 2010

**Год постройки:** 2010

**Страна:** United States

## Размеры

**Длина общая:** 88' 0" (26.82m)

**Ширина:** 22' 0" (6.71m)

**Макс. осадка:** 6' 0" (1.83m)

## Скорость, вместимость и масса

---

**Крейс. скорость:** 16 Kts. (18 MPH)

**Макс. скорость:** 21 Kts. (24 MPH)

**Водоизмещение:** 200000 Pounds

**Вместимость воды:** 600 Gallons

**Вместимость сточного бака:** 400 Gallons **Объем топливного бака:** 3000 Gallons

## Размещение

---

**Всего кают:** 3

**Всего ком. состава:** 6

**Каюты экипажа:** 2

## Корпус и палуба

---

**Материал корпуса:** Fiberglass

## Информация о двигателе

---

**Двигатели:** 2

**Производитель:** Caterpillar

**Модель:** C-32

**Тип двигателя:** Inboard

**Тип топлива:** Diesel

---

# ПОДРОБНОЕ ОПИСАНИЕ

---

## Accommodations & interior

---

- 24V Ceiling Lights
- High quality European door locks
- IR repeater eye
- Middle Atlantic Media Rack
- Creston remote (2x) + wall mount
- Phantom screen door for Salon & Pilothouse
- Industry leading Crestron Adagio system w/full functional programmability that delivers a complete, CrestNet solution for high performance multi-room audio distribution and multi-function one-touch controls.
- I Upgraded Sound system w/ audio distribution in Salon, Aft Deck, Master, VIP, Pilothouse or Skylounge
- Granite countertops on all cabinetry in salon and staterooms
- Seagull water purifier (ADEX design award winner w/filtration to .1 microns & EPA certification for microbiological purification)
- Separate Dining area with table and seating for eight
- Sapelli Steering Wheels
- All staterooms, salon, pilothouse & Flybridge with indirect lighting
- Nu-Tone central vacuum cleaner
- Full Height washer/dryer
- Flip Up Berth for storage
- **HMC custom mattresses throughout**
- **Custom settees and chairs**
- Crew quarters w/private head, shower & refrigerator w/water & ice maker built in
- RS232 dual communication w/ True High Definition with latest HDMI technology ( non-simulated HD)
- Galley Storage cabinetry w/hidden hinges
- **Two day Heads** - one outside galley and one in skylounge

## Cockpit & Aftdeck

---

- Water-tight door on transom for access to engine room/crew quarters
- Cabinet for storage, tackle center, wet bar, refrigerator & BBQ
- Side boarding gates
- Fiberglass stairway up to flybridge
- Quartz lights on back of hardtop for cockpit
- Transom Shower
- **Cockpit docking control - remote Glendinning wired remote plus a wireless Yacht Controller**

- Cockpit mooring winches - Electric
- Four u-Shaped rails on swim step
- Extra set of placement holes for when rail is moved

## Salon & Dining

---

- Sapelli paneling and cabinetry
- Custom carpeting with sound insulation
- Custom designed window mullion
- Decorative ceiling treatment
- 24v LED lights
- Sony 52" LCD TV & Denon professional Sound System
- Middle Atlantic Media rack for A/V equipment
- IR Repeater
- One subwoofer
- **Custom Sofa and Chairs**
- **Custom built table and chairs - seats 6**
- Abundant storage for china and crystal
- Wine Cooler
- Icemaker
- Liquor Storage

## Galley

---

- Granite accent flooring
- Sapelli panel & cabinetry
- Bronze mirror w/paint trim and decorative ceiling in center
- Granite countertops
- Seagull water purifier
- Franke double sink with tap
- Exhaust blower
- 24v LED Lighting
- Custom S/S pot holder for cooktop
- U- shaped dinette
- Overhead dish locker forward & aft
- 27" Gaggenau Electric cooktop
- 24" Gaggenau electric oven
- Sub-Zero Refrigerator/ Freezer
- GE Garbage Disposal
- 30" JennAir over the Range Microwave w/speed cook convection
- Fisher Paykel Drawers Dishwasher

- 12" Broan trash compactor
- 15WC U-Line wine cooler

## Skylounge

---

- Steering control station with complete instrumentation
- **Furuno Navnet 3D navigation center**
- **Nobeltec PC-based Navigation Software**
- **5 x 17" Ambient Nav screens**
- Sapelli valance board
- 24V LED lights
- Chart locker
- Raised settee with table
- White non-skid fly bridge decks
- Kahlenberg triple heavy-duty horn
- Oversized drains to overboard
- Teak or fiberglass table
- Cabinet including wet bar, refrigerator and wine cooler
- **Three Stidd electric helm seats**
- 30" Sony with DVD, satellite receiver and sound system
- Sky lounge Day head

## Master Stateroom

---

- Sapelli paneling & cabinetry
- Custom carpeting with sound barrier
- "Floating" King sized berth
- HMC custom mattress
- Custom headboard with recessed indirect lighting
- Two "Floating" night stands with countertops
- Hidden safe in hanging locker
- Bureau with chest of drawers at both sides and burl accents
- Twin Cedar lined, full height hanging locker with automatic lighting
- 24V LED lights
- Sony 40" LCD tv and Sony DVD/Sound System
- Middle Atlantic Media Rack
- S/S Oval port lights w/ screens
- IR Repeater eye
- Sconces above night stands



---

## Guest Stateroom

---

- Sapelli paneling and cabinetry
- Custom carpeting
- 24V LED lights
- “Curved” walls with custom designed accents
- Upholstered headboard with burl-wood accents
- Drawers under berth
- Queen-sized berth with custom HMC mattress
- S/S oval port lights w/screens
- Cedar lined hanging locker with automatic lighting
- Sharp 20” LCD tv on port wall side behind door(VIP)
- Sony 26” LCD tv on wall (Guest)
- Sony DVD/CD audio stereo and video system w/IR repeater eye
- Two “Floating” night stands with granite tops

---

## Crew/Guest Quarters

---

- Sapelli Paneling and Cabinetry in Captains Stateroom
- Sony DVD/CD audio stereo and video system w/IR Repeater eye
- Bunk beds port and starboard
- Kitchenette ( microwave & refrigerator)
- Amtico flooring
- Cedar lined hanging locker with automatic lighting
- 24C LED lighting
- Storage locker
- Sharp 20” LCD tv on port and stbd cabins wall
- Maytag 2400 AWW stacked washer/Dryer
- Headhunter blackwater tank monitor w/macerator pumpout option

---

## Heads

---

- Sapelli paneling and cabinetry
- Sapelli plank flooring
- Granite or marble countertops with china sink
- Grohe faucets for sink & shower
- Seamless fiberglass stall shower with one piece glass door
- Tecma toilet systems
- Keuco bathroom fixtures
- Air extraction in each head shall be by low noise extraction fans
- Cabinet with mirror door above sink

- **Raritan Blackwater treatment system**

## **Hull, Superstructure & Decks**

---

- Carbon fiber infused composite hull & decks
- Longitudinal and lateral fiberglass stringers filled with high density foam
- Fiberglass with infusion and “vacuum bag technology”
- White gelcoat on exterior
- Airex C70.90 PVC foam sandwich construction above water line
- Black boot stripe
- Two coats of Seahawk or equal primer, an epoxy barrier coat and covered with two coats of Seahawk or equal anti-fouling bottom paint
- White vinyl rub-rail s/s insert
- Vinylester resin
- Swimming ladder
- Sink/BBQ on aft flybridge
- Deck, superstructure and flybridge with Balsa AL600 sandwich construction and aluminum I-beam reinforcements
- Interior structural components all bonded to hull
- Reinforced collision bulkhead
- Reinforced aluminum I-beam in sky lounge
- Interprotect epoxy based anti-fouling/anti-osmosis system
- Sky lounge or hard top with ventilation hatches (w/lower helm)
- Pyroteck and lead foam sound/vibration insulation
- Convenience lights, lower deck & Flybridge
- White non-skid fiberglass decks
- Side boarding gates in cockpit and midship

## **Exterior Hardware & Fittings**

---

- Flushed finished “frameless” windows with dark tint, tempered safety glass
- Electric stainless-steel sliding doors for salon
- White non-skid fiberglass decks
- Stainless-steel handrails with teak steps for ladder from cockpit to flybridge
- Two teak flag poles, fore & aft
- High bulwark with flush mounted deck lights, bulwark side doors for boarding
- 2” elliptical S/S handrails & stanchions, main deck 1-1/2” on Flybridge
- Zinc anodes on transom
- Elliptical S/S handrails on back transom
- Removable lifeline for aft Flybridge railing
- Aft deck shower, dock-side water inlet
- S/S CQR anchor 140 lbs x 2

- Circular Fiberglass stairs to Flybridge from cockpit
- Seagull Water purifier
- Flooding light at back of boat deck
- Engine controls
- Reinforced anchor platform and anchoring system
- Integral roller and chain stopper with Muir anchor winches
- Sea Water anchor chain wash-down
- Muir VC2500 for aft deck x 2
- 316 stainless-steel cleats and portlights
- Built-in and recessed hot/cold fresh-water wash down in cockpit/swim platform
- Windlass Muir VRC4000C x 2 (Hydraulic)
- Lighted OA logo
- Hepworth heavy duty commercial grade wipers
- Sunbrella fabric (Berenson Tuxedo) on outside cushions
- Teak and stainless swim ladder, foldable and recessed
- Steelhead CT3000 yacht crane
- Water tight doors to side deck
- **Yacht Controller - Wireless Control (Engines, Thrusters)**
- **Givens Liferaft 6 man x 2 (Mounted on Boat Deck)**
- **14' Novurania RIB with 60HP Yamaha 4 stroke**

## Electrical

---

- Heavy-duty batteries - new 2015 ( House banks:1100 Amp/H)
- **4000W Mastervolt combi Inverter**
- AC duplex receptacles throughout the boat with GFI protection in dedicated areas
- 24V lights in all compartments
- 24V DC system throughout boat
- 24v DC generator starting system
- 24v DC electronic system
- **30kW Northern Lights Generators** (Stb 1000 hrs, Port 942 hrs)
- Service battery switch
- Shore power receptacle 2 x 100 amp on transom with cablemaster
- **Octoplex** (based on US military technology) for remote control, activation and monitoring of AC/ DC breakers. Includes auto switching for emergency back up locals. Tank monitoring included
- **Muir Chain counter x 2**
- Cellular amplifier (Professional grade wireless signal booster, optimized for voice or laptop data connections)
- Battery paralleling system with control switch
- Vimar Dimmer switches and outlets
- C-Power Iso booster 93-Iso boost 100A for shore power inlet (2)
- Octoplex system AC/DC sub panels in different areas

- AC outlets throughout
- Complete electrolysis bonding system
- Exterior connector for shore phone and cable tv
- NMEA2000 BACKBONE w/ AC/ DC power installed (for future electronics / equipment communication network)
- **100 Amp/50Amp Splitter**

## Pumping

---

- **SEA RECOVERY Watermaker 900 GPD**
- Fresh water system Headhunter Mach 5 120 VAC and with 24VDC backup pump
- Power steering system
- Ronco holding tank plumbed dockside for overboard discharge
- Fresh water wash down on foredeck
- Tecma head system throughout
- High water bilge alarm at every rule bilge pump station
- Color coded piping system for easy identification
- Grey water tanks for showers

## Engine Room & Bilge

---

- Stainless steel rails on side of engine and stainless steel engine mounting plates
- Engine Alarm system, for low oil pressure and high water temperature
- Both sides filler for fuel tanks with individual tank vents
- Generator set resiliently mounted and installed with sound shield
- Dual Racor fuel filters with gauges for engines & generator
- Sight gauges for all tanks
- Fresh-water outlet with hose for engines & generator
- Cruisair chilled water system air conditioning( Reverse Cycle capable for operating down to 40 degrees)
- High volume AC fresh water pumps
- Dripless seal for rudder post
- Triple sound and heat insulated materials with foam and lead layers w/ 3M and Quash technologies
- Sylomar floating deck system with sound absorption and insulation
- Spare conduit running from engine room to pilothouse, engine room to Flybridge and engine room to Flybridge overhang
- S/S engine beds
- Refrigerant type is accepted worldwide under the Montreal protocols
- Delta T intake/ exhaust fans with variable frequency drives shall be mounted to facilitate the pushing and/or pulling of air through the machinery spaces and the providing of a high rate of air exchange. Ducts shall have fire dampers installed with manual/ automatic triggering

which shall be tied into the machinery shut down circuits. Ducts in way of interior living space shall be insulated and soundproofed. System of Delta-T water separator grilles used on intake and exhaust sides of system

- Sight gauges on fuel and water tank
- Automatic bilge pump – The vessel shall be outfitted with automatic bilge pump with manual and automatic switches in each space as divided by watertight bulkheads. High water alarms will be mounted in each of these bilge zones
- Water-tight bulkheads with further sound and temperature insulation
- Spacious engine room non-skid flooring
- Dry bilge area arrangement in center engine room
- Fire extinguisher system for engine room
- Generator exhausts to be water-drop type per “Centek”, “Marine Exhaust Co.,” or equal
- Hydraulic bow thruster - Key Power
- Hydraulic Stern Thruster - Key Power
- Maintenance free “dripless” seals for engine shaft packing glands
- Powers take off from both engines - Key Power stabilizers
- Marine explosion proof fluorescent lights in AC and DC configurations
- Heavy duty Aqua 22HS shafts
- High performance computer designed and machined NiBrAl propeller – Class “S”
- Underwater exhaust specifically designed for Monk/Hagerman tunnels
- S/S rudders with integrated zinc plates
- S/S cap on transverse stringers in central walkway
- Detailed stringers in engine room and lazarette
- The vessel’s bonding and grounding systems shall include copper straps secured to the hull and running the full length of the vessel parallel to centerline. Engines, generators, metallic through hulls, strainers, and pump bodies shall be connected to the bonding strap using 8 AWG wire minimum or equivalent
- All engine room and machinery spaces shall be primed and top coated with polyurethane paint system.
- Lube oil change system for engines and generators with approximately 45-gallon lube tank

## Additional Options Chosen For This Vessel

---

### Additional Accommodations & Interior Options

- Sapelli with 30% furniture finish (satin)
- Ultraleather Hide for Interior Stidd/helm/dash/mullion
- Granite Floor with inlay in foyer floor
- Extra washer/dryer in laundry
- Lower Foyer countertop: Marron Emperador
- Day head floors: White Aurora slab with India Black border
- Granite floor for VIP and port Guest head floor

## Additional Exterior Hardware & Fittings Options

- Fore Deck Sunpad
- Bow FRP and Aritex aluminum hatches with aritex hinge and latch, storages, S.S. ladder and rope hooks
- Boat deck sliding hatch
- Raritan blackwater treatment system
- Teak deck from cockpit to sidewalk
- Extra 200 gallon holding tank for a total of 400 gallon black water capacity
- Teak deck for cockpit
- Teak Swim platform with teak steps

## Additional Electrical & Appliance Options

- Heated floors in Master Stateroom, VIP and port room heads
- Dedicated engine room air conditioning
- Skylounge wine cooler
- Extra Octoplex screens in Master Stateroom and galley
- Four underwater lights
- 24- 1/2" Fire Magic gas Barbecue in fore boat deck
- Sony 26" recessed LCD TV in galley
- Sony 32" pop-up LCD TV in Skylounge

## Additional Control & Navigation Options

### FURUNO Navnet 3D Navigation Package with NEMA 2008

- Furuno MFD Black Box Processors
- Furuno 12Kw 6' Open Array Dual Ranging Radar
- Furuno Class B AIS Integrated into radar and chart plotter
- Furuno Digital Sounder with 1Kw B260 Broadband Transducer
- 5 x 17" Ambient Nav Marine Monitors at Skylounge
- Maretron DSM250 NMEA 2000 Display at Pilothouse, Galley & Master stateroom
- ICOM 604 VHF in Skylounge
- Simrad AP28 Autopilot System in Skylounge
- KVH HD7 Control Panel Satellite HDTV System
- Nobeltec Navigation Computer
- AXIS IP Camera in Engine Room and Aft Deck
- Redundant Maretron NMEA 2000 GPS, Depth Sounder and Weather station
- **Furuno Electronic GPS**
- **YACHTCONTROLLER**- wireless remote for engines and thrusters
- **Glendinning Remote for engines and thrusters (wired)**

---

## Disclaimer

---

### Exclusions

**“All personal property is excluded unless specifically identified and included in the sale agreement and listing specifications. Personal property refers to all items not permanently attached to the vessel including but not limited to: artwork, furnishings, and recreational or entertainment items. Advertisements, marketing materials, and/or other photography may depict the vessel with personal property, however, such personal property is excluded unless otherwise specifically included as provided herein.”**

### Disclaimer

The Company offers the details of this vessel in good faith but cannot guarantee or warrant the accuracy of this information nor warrant the condition of the vessel. A buyer should instruct his agents, or his surveyors, to investigate such details as the buyer desires validated. This vessel is offered subject to prior sale, price change, or withdrawal without notice.

---

## Исключения

---

При продаже яхты исключаются личные вещи владельца.

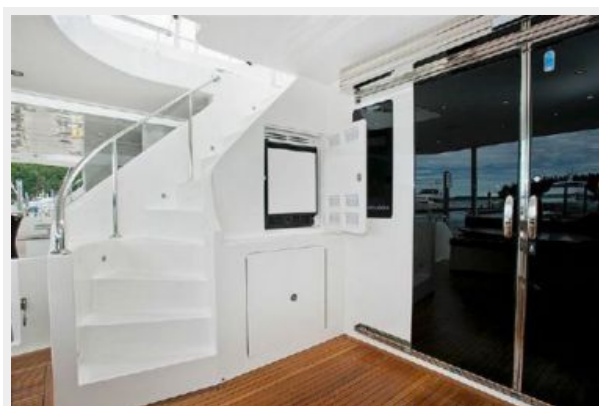
---

## Отказ от ответственности

---

Компания предоставляет описание судна или яхты добросовестно, но не может гарантировать точность этой информации, а также не ручается за техническое состояние. Покупатель должен проинструктировать своих агентов или оценщиков исследовать представленную информацию более подробно, по собственному желанию. Продажа судна или яхты, изменение цены или снятие с продажи будет происходить без предварительного уведомления.

# ФОТОГРАФИИ







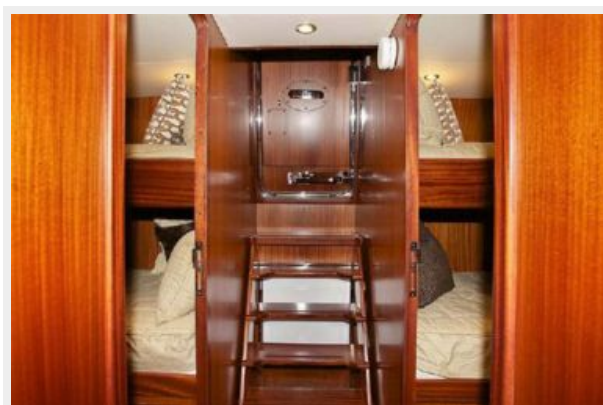
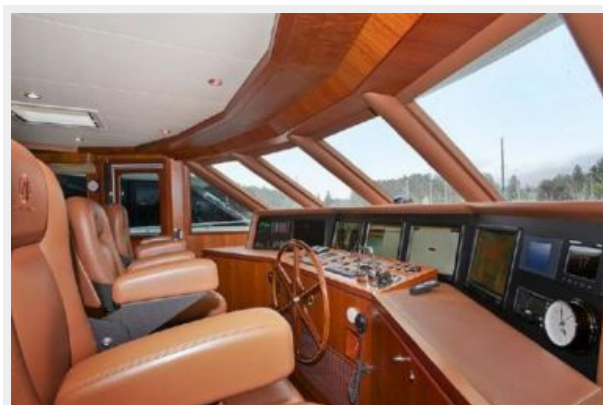






















# КОНТАКТЫ

---

Андрей Шестаков (Andrey Shestakov) – ведущий яхтенный брокер отдела продаж яхт и судов компании Shestakov Yacht Sales Inc. Официальный представитель Shestakov Yacht Sales Inc. для русскоговорящих клиентов в центральном офисе компании в Майами/Форт Лодердейл/Флорида/США.

## Контактная информация

---

Email: [andrey@shestakovyachtsales.com](mailto:andrey@shestakovyachtsales.com)

Web: [shestakovyachtsales.com](http://shestakovyachtsales.com)

## Телефоны

---

Краснодарский край: **+7(918)465-66-44**

США, Майами, Флорида: **+1(954)274-4435**

## Время работы

---

Понедельник – Суббота: **9:00 - 21:00**  
EDT

Воскресенье: **Закрето**

## Адрес

---



Harbour Towne Marina, 850 NE 3rd St,  
STE 213, Dania, FL 33004