

## SUMMER SNOW — MARINER



**Builder:** MARINER

**Year Built:** 2004

**Model:** Trawler

**Price:** PRICE ON APPLICATION

**Location:** United States

**LOA:** 42' 4" (12.90m)

**Beam:** 13' 2" (4.01m)

**Max Draft:** 4' 0" (1.22m)

Our experienced yacht broker, Andrey Shestakov, will help you choose and buy a yacht that best suits your needs **Summer Snow — MARINER** from our catalogue. Presently, at Shestakov Yacht Sales Inc., we have a wide variety of yachts available on our sale's list. We also work in close contact with all the big yacht manufacturers from all over the world.

If you would like to buy a yacht **Summer Snow — MARINER** or would like help answering any questions concerning purchasing, selling or chartering a yacht, please call **+1(954)274-4435**

# TABLE OF CONTENTS

TABLE OF CONTENTS	2
SPECIFICATIONS	5
Overview	5
Basic Information	5
Dimensions	5
Speed, Capacities and Weight	6
Accommodations	6
Hull and Deck Information	6
Engine Information	6
DETAILED INFORMATION	7
Accommodations & Layout	7
Electronics & Navigation	8
Electrical Equipment	8
Engine Room & Mechanical	9
Deck & Construction	9
Disclaimer	9
Exclusions	10
Disclaimer	10
PHOTOS	11
Cockpit with Davits	11
Salon	11
Engine Room	11
Port Profile	11
Bow	11
Starboard Profile	11
Bow & Windlass	12
Cockpit	12
Easy Bridge Access	12

Flybeeidge	12
Flybridge Looking Aft	12
Upper Helm	12
Upper Helm Seating	13
Flybridge Grill	13
Covered Sidedecks	13
Clean Lazarette	13
Wide & Safe Sidedecks	14
Salon to Port	14
Lower Helm	14
Galley to Starboard	14
Dinette	15
Lower Helm with Pilothouse Door	15
Master Stateroom	15
Chart Locker	15
Head	16
Shower	16
Guest Stateroom	16
Engine Room 2	16
Water Maker	17
Wiring Detail	17
Engine Room 3	17
Generator in Sound Shield	17
Inside Generator	17
Fuel Scrub System	17
Generator Water Vapor Separator	18
Manson Supreme Anchor	18
From her Article in Passagemaker in 2004	18
KATO Davit with Apex Rib	18

---

July Haulout	18
July Haulout 2	18
July Haulout 3	19
July Haulout 4	19
July Haulout 5	19
July Haulout 6	19
CONTACTS	20
Contact details	20
Telephones	20
Office hours	20
Address	20

---

# SPECIFICATIONS

---

## Overview

---

**On Display at Trawlerfest in Baltimore from Sept. 25th-28th!** "Summer Snow" is an original owner 2004 40' Mariner Yachts trawler that has seen great care from a knowledgeable owner who has thoroughly enjoyed cruising aboard her. With only 1900 hours on her single 370hp Yanmar she has seen proper maintenance and is ready for her next adventure!

"Summer Snow" features a **6.5kw Onan Generator, Fuel Scrubber System, Bow Thruster, Water Maker, 940amp Hour Battery Bank with Inverter, Reverse Cycle A/C, Chest Freezer in Lazarette, Upgraded Hinged Mast, Spare Prop, Spare Parts, Furuno GPS and Radar at Both Stations, Autopilot, Davit System and RIB Tender!**

Used and kept on the Northern Chesapeake Bay from new until October of 2012, the owners did cruise to the Keys, back to Canada then to the Bahamas before returning back to the Chesapeake recently. "Summer Snow" has proven herself as a safe, efficient and comfortable cruise vessel but it is now time to sell. Realistically priced she represents a great value and was just hauled out in late July to touch up bottom paint, change zincs and to wax the hull. While out of the water we did have a surveyor inspect the boat as well and she is structurally sound with no moisture or negative findings!

She is easy to see in Pasadena, MD (right between Baltimore and Annapolis) and is just 20 minutes away from Baltimore Washington International Airport (BWI). Please call to set up an appointment to see her today!

## Basic Information

---

**Category:** Trawler

**Model Year:** 2004

**Year Built:** 2004

**Country:** United States

**Fly Bridge:** Yes

**Cockpit:** Yes

## Dimensions

---

**LOA:** 42' 4" (12.90m)

**Beam:** 13' 2" (4.01m)

**Max Draft:** 4' 0" (1.22m)

---

## Speed, Capacities and Weight

---

**Displacement:** 23500 Pounds

**Water Capacity:** 140 Gallons

**Holding Tank:** 40 Gallons

**Fuel Capacity:** 300 Gallons

---

## Accommodations

---

**Total Cabins:** 2

**Total Heads:** 1

---

## Hull and Deck Information

---

**Hull Material:** Fiberglass

**Hull Finish:** Stainless Steel

---

## Engine Information

---

**Engines:** 1

**Manufacturer:** Yanmar

**Engine Type:** Inboard

**Fuel Type:** Diesel

---

# DETAILED INFORMATION

---

---

## Accommodations & Layout

---

"Summer Snow" is a pleasure to walk up to from the dock or to see her underway. Traditional good lines make her timeless in design and her "Europa" style with covered side and aft deck are very practical. An original owner boat who has been predominately kept on the northern Chesapeake Bay but with a proven cruising record from the Keys to Canada. She has been outfitted nicely with her optional 370hp Yanmar, Generator, Bow Thruster, Water Maker, Inverter, Reverse Cycle A/C and more.

Coming aboard "Summer Snow" one can easily traverse from stem to stern with wide side decks that are protected overhead and with sturdy and appropriately high stainless steel side rails. The bow features a Maxwell windlass with capstan, teak grating and a Manson Anchor with all chain rode. Moving aft there is a door to the lower station on the starboard side which makes accessing lines a breeze if short handed and provides great ventilation underway when at the lower helm. The aft deck or cockpit is large and again shaded with the bridge overhang. In deck there is access to a large lazarette that has a chest freezer and plenty of storage as well as easy access to the rudder post. Built into the corners of the cockpit are two seats with storage compartments beneath. A door leads out from the transom to the swim platform with ladder. On the stern are stainless steel KATO davits which make carrying and launching the 10' RIB with outboard attached a snap.

Moving up from the cockpit to the flybridge is an easy transition with a stair/ladder combination that gently rakes forward. The flybridge is huge and wide open providing a ton of versatility for carrying kayaks, bikes and other provisions for extended cruising or just cruising with the family. A stainless steel propane grill is fastened along the aft end of the bridge and the mast has been upgraded to easily hold the electronics' antennas and yet fold down for lower bridge clearance. The flybridge has a double bimini system and a full enclosure making this a functional area no matter the weather. The upper helm has two Arrigoni Helm Chairs (like Stidds) for captain and mate along with two bench seats with storage beneath.

Going inside the cabin the salon is large and bright with windows providing 360 degree views. Salon windows open up and can be used for ventilation even on rainy days with the side deck overhangs providing cover. The aft salon door, side lower helm door and the center windshield can also be used to enjoy a nice cross breeze. The boat does also have a 16,000 BTU and a 9,000 BTU Air Conditioning and Heating System. The salon features a built in cabin aft and to port and a built in dinette that can convert to a third berth when needed. There is space for a chair/recliner or two between these two built ins and the owner currently has two white recliners (pictured) which do not convey. To starboard is the galley and lower helm. The galley features a refrigerator and freezer under counter, deep stainless steel sink, propane gas stove and oven, cabinet space and fiddle edge countertops. There is a flat screen TV and DVD player in the salon area as well. Forward to starboard is the lower helm with full instrumentation and electronics, built in settee and side door leading out to the decks.

The staterooms are just a few steps down and forward with the guest stateroom with double berth off to the port with the head and stall shower across to starboard. The master stateroom is in the bow and features an island double berth centerline. A vanity, built in book shelves, built in lockers and drawers complete this space and make extended cruising aboard very comfortable.

- Raritan Electro Scan Treatment System allows for safe overboard discharge of the head.
- There is a holding tank and deck pump out as well.
- 16,000 and 9,000 BTU Reverse Cycle Air and Heat with Digital Controls
- Under counter Refrigerator and Freezer
- Chest Freezer in Lazarette
- Propane Oven and 3 Burner Stove Top with Trident Monitor/Control System
- 30 Gallon Per Hour Water Maker
- Overhead Grab Rails
- Teak and Holly Flooring
- Varnished Teak Interior
- Teak Cabin Overhead Beams
- Teak Chart Locker
- Aluminum Framed Sliding Salon Windows

---

## Electronics & Navigation

---

- Furuno Navnet GPS/Chartplotter and Radar at Both Upper and Lower Stations
- Simrad Autopilot at Both Upper and Lower Stations
- Icom VHF Radio at Lower Helm and Icom Command Mic at Upper Helm
- Sitex AIS Broadcast and Receiver
- Yanmar Analog Gauge Package with Hour Meters at Upper and Lower
- Compass at Lower Helm
- Vetus Bow Thruster Controls
- Anchor Windlass Controls
- Chart Locker and Chart Table at Lower Helm

---

## Electrical Equipment

---

- 6.5kw Onan Generator in Sound Shield (1600hrs.)
- 940amp hour Battery Bank
- Inverter that works all outlets
- (2) Xantrex TrueCharge 2 40amp Battery Chargers (One for each bank)
- Xantrex Link 20 Battery Monitor
- Batteries in Enclosed Battery Boxes (All changed within the past two years)
- Spare Alternator Onboard
- Complete DC and AC System with Breaker Panel
- 50amp Shorepower System



---

## Engine Room & Mechanical

---

"Summer Snow" could not have an easier to access nor more spacious engine room than what you will find onboard. Several panels lift up from the teak and holly salon sole providing an abundance of headroom and light all the way around the Yanmar Engine and the Onan Generator. The water maker has been segmented with the membranes located outside of the engine room (under the guest berth) while the rest of the unit resides in the forward starboard corner of the machinery space. Fuel tanks are constructed out of fiberglass and the water tanks are stainless steel.

- Engine Room Lighting
- Easy Access to Shaft Seal
- Sound Insulation
- Two Engine Room Cameras
- Dual Racor Fuel Filters
- Fuel Scrubbing System
- Engine Room 110v Outlet
- Spare Starter
- Spare Genset Waterpump
- Spare Alternator
- Grocco Raw Water Strainers
- Vapor/Water Separator on Generator Exhaust

---

## Deck & Construction

---

- Solid Fiberglass Hull with No Coring
- 316L Stainless Steel Hardware
- KATO Stainless Steel Davit System at Transom
- Fiberglass Swim Platform
- 10' Apex Rigid Bottom Inflatable with 20hp Honda
- Full Canvas on Bridge with Extended Bimini
- Maxwell Windlass with Capstan
- All Chain (200') Anchor Rode
- Manson Supreme Anchor
- Fortress FX23 Anchor
- Fortress FX37 Anchor
- Spare Prop
- Two Arrigoni Helm Chairs on Bridge with Footrests
- Exterior Teak has been left natural (no varnish)

---

## Disclaimer

---

While we attempt to display current and accurate data, this listing may not reflect the most recent

transactions or may contain occasional data entry errors. Selling agent makes no warranties, express or implied, regarding the content or availability of the products described herein. All inventory listed is subject to availability and prior sale. Please consult selling agent for details. Prices are quoted for the USA only and may not include transportation, taxes, or other applicable charges. Photographs may be representative only and may vary somewhat from the actual items offered for sale. We will not be responsible for inaccurate data obtained from our site. Please check with your local dealer to ensure that you have the latest information available. Information on this web site could include technical inaccuracies or typographical errors. Changes may be periodically made to the information or the products herein. Questions or comments regarding these policies may be directed to website hosting agent.

## Exclusions

---

Owner's personal belongings.

## Disclaimer

---

The Company offers the details of this vessel or yacht in good faith but cannot guarantee or warrant the accuracy of this information nor warrant the condition of the vessel. A buyer should instruct his representatives, agents, or his surveyors, to investigate such details as the buyer desires validated. This vessel or yacht is offered subject to prior sale, price change, or withdrawal without notice.

# PHOTOS

**Cockpit with Davits**



**Salon**



**Engine Room**



**Port Profile**



**Starboard Profile**



**Bow**



**Bow & Windlass**



**Cockpit**



**Easy Bridge Access**



**Flybeeidge**



**Flybridge Looking Aft**



**Upper Helm**



**Upper Helm Seating**



**Flybridge Grill**



**Covered Side decks**



**Clean Lazarette**



### Wide & Safe Sidedecks



### Salon to Port



### Lower Helm



### Galley to Starboard



**Dinette**



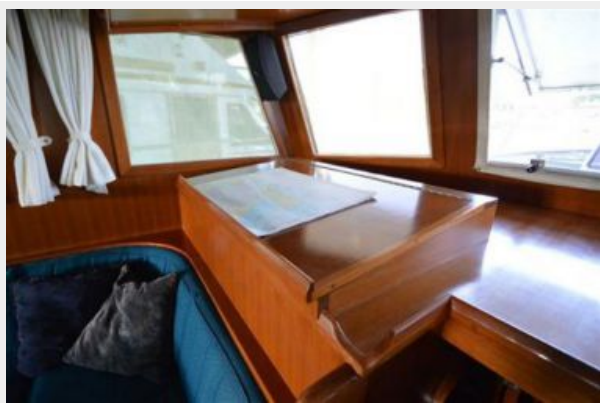
**Lower Helm with Pilothouse Door**



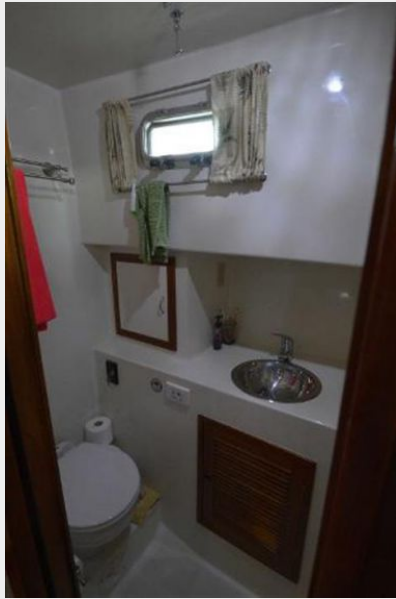
**Master Stateroom**



**Chart Locker**



**Head**



**Shower**



**Guest Stateroom**

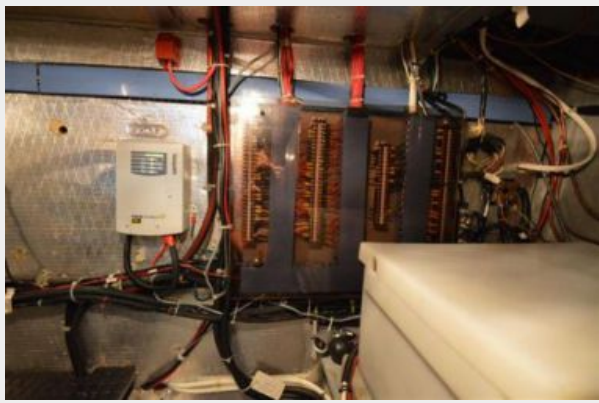


**Engine Room 2**





**Wiring Detail**



**Water Maker**



**Engine Room 3**



**Generator in Sound Shield**



**Inside Generator**



**Fuel Scrub System**



### Generator Water Vapor Separator



### Manson Supreme Anchor



### KATO Davit with Apex Rib



### From her Article in Passagemaker in 2004



### July Haulout



### July Haulout 2



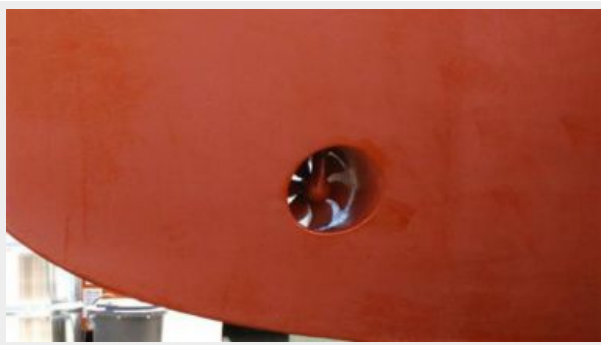
**July Haulout 3**



**July Haulout 4**



**July Haulout 5**



**July Haulout 6**



# CONTACTS

---

Andrey Shestakov, leading yacht broker of the sales department of Shestakov Yacht Sales Inc. Shestakov Yacht Sales Inc., the official representative of the Miami/Fort Lauderdale FL headquarters.

## Contact details

---

Email: [andrey@shestakovyachtsales.com](mailto:andrey@shestakovyachtsales.com)

Web: [shestakovyachtsales.com/en/](http://shestakovyachtsales.com/en/)

## Telephones

---

USA: +1(954)274-4435

## Office hours

---

Monday – Saturday: **9:00 - 21:00** EDT

Sunday: **closed**

## Address

---



Harbour Towne Marina, 850 NE 3rd St,  
STE 213, Dania, FL 33004