

## ANGER MANAGEMENT — OCEAN YACHTS



**Судостроитель:** [Ocean Yachts](#)

**Год постройки:** 2006

**Модель:** Катер для спортивной рыбалки

**Цена:** **ЦЕНА ЯХТЫ ПО ЗАПРОСУ**

**Местонахождение:** United States

**Длина общая:** 42' 0" (12.80m)

**Ширина:** 15' 4" (4.67m)

**Мин. осадка:** 3' 11" (1.19m)

**Крейс. скорость:** 27 Kts. (31 MPH)

**Макс. скорость:** 31 Kts. (36 MPH)

Купить **ANGER MANAGEMENT** — [Ocean Yachts](#) а также выбрать подходящую вам яхту из нашего каталога яхт вам поможет опытный яхтенный брокер Андрей Шестаков. На сегодняшний день компания [Shestakov Yacht Sales Inc.](#) имеет большое количество яхт в собственном списке продаж, а также тесно сотрудничает со всеми крупными яхтенными производителями по всему миру.

Для того чтобы купить яхту **ANGER MANAGEMENT** — [Ocean Yachts](#) а также проконсультироваться по любому вопросу связанному с покупкой, продажей, чартером яхт позвоните по телефону **+7(918)465-66-44**.

# ОГЛАВЛЕНИЕ

ОГЛАВЛЕНИЕ	2
ХАРАКТЕРИСТИКИ	5
Обзор	5
Основная информация	5
Размеры	5
Скорость, вместимость и масса	5
Размещение	5
Корпус и палуба	6
Информация о двигателе	6
ПОДРОБНОЕ ОПИСАНИЕ	7
Accommodations	7
Master Stateroom	7
Guest Stateroom, Starboard	7
Salon	7
Master Head	8
Guest Head	8
Galley	8
Helm / Electronics and Navigation	8
Flybridge	9
Deck	9
Engine and Mechanical Equipment	10
Water System	10
Electrical System / Equipment	11
Cockpit / Fishing Equipment	11
Exclusions	11
Salesman's Comments	11
Исключения	12
Отказ от ответственности	12

ФОТОГРАФИИ	13
Master Stateroom - TV	13
Profile 2	13
Salon 1 - Sofa	13
Salon 2 - TV	13
Master Head 2	14
Master Head 1	14
Guest Head	14
Galley 1	14
Galley 3	15
Galley 2	15
Helm / Electronics & Navigation 1	15
Helm / Electronics & Navigation 2	15
Helm / Electronics & Navigation 4 - Compass	16
Helm / Electronics & Navigation 3	16
Deck 1 - Bow	16
Deck 2 - Seating	16
Deck 3 - Seating	16
Deck 4 - Helm Seats	16
Engine & Mechanical Equipment 1	17
Engine & Mechanical Equipment 2	17
Engine & Mechanical Equipment 3	17
Engine & Mechanical Equipment 4	17
Engine & Mechanical Equipment 5	17
Engine & Mechanical Equipment 6	17
Electrical System / Equipment 1 - Electrical Panel	18
Electrical System / Equipment 2 - Generator	18
Cockpit / Fishing Equipment 1 - Cockpit	18
Cockpit / Fishing Equipment 2	18

Cockpit / Fishing Equipment 3	19
Cockpit / Fishing Equipment 4	19
Rear Profile	19
<b>КОНТАКТЫ</b>	<b>20</b>
Контактная информация	20
Телефоны	20
Время работы	20
Адрес	20

# ХАРАКТЕРИСТИКИ

## Обзор

This 2006 42' Ocean Super Sport features a two-Stateroom, two-Head layout with a luxurious Salon, L-shaped dinette, huge storage under Galley and teak interior. Caterpillar 2,000 hour service, bottom paint and routine maintenance done.

## Основная информация

**Тип судна:** Катер для спортивной рыбалки

**Подкатегория:** Convertible

**Модельный год:** 2006

**Год постройки:** 2006

**Страна:** United States

**Верх:** Hardtop

**Кубрик:** Да

## Размеры

**Длина общая:** 42' 0" (12.80m)

**Ширина:** 15' 4" (4.67m)

**Мин. осадка:** 3' 11" (1.19m)

## Скорость, вместимость и масса

**Крейс. скорость:** 27 Kts. (31 MPH)

**Макс. скорость:** 31 Kts. (36 MPH)

**Водоизмещение:** 34151 Pounds

**Вместимость воды:** 100 Gallons

**Вместимость сточного бака:** 47 Gallons

**Объем топливного бака:** 519 Gallons

## Размещение

**Всего кают:** 2

**Спальные места:** 6

**Всего ком. состава:** 2

## Корпус и палуба

---

**Материал корпуса:** Fiberglass

**Материал палубы:** Fiberglass

## Информация о двигателе

---

**Двигатели:** 2

**Производитель:** Caterpillar

**Модель:** C-9A

**Тип двигателя:** Inboard

**Тип топлива:** Diesel

---

# ПОДРОБНОЕ ОПИСАНИЕ

---

## Accommodations

---

Sleeps four owners and guests in two Staterooms for a total of four berths. One Master Head with shower, one Guest Head with shower.

## Master Stateroom

---

- Bedspread w/ shams
- Private Head entrance
- Cedar-lined hanging locker
- Walk-around full-sized berth
- 15" LCD TV w/ DVD player
- Overhead teak cabinets & bunk storage
- Stereo system w/ AM / FM radio, CD player
- (2) Teak night stands w/ drawers & matching lamps

## Guest Stateroom, Starboard

---

- Cedar-lined hanging locker
- (2) Single berths (easily converts into a full-size bed)

## Salon

---

- Ice maker
- Teak bulkheads
- Entertainment center
- Hand-crafted cabinetry
- Central vacuum system
- 20" LCD TV w/ remote
- Teak cocktail table w/ storage
- Upholstered panels & valances
- L-shaped lounge seating w/ rod storage
- Amtico teak & holly flooring at entrance
- Zoned air conditioning w/ reverse cycle heating
- Bose stereo system with CD player / DVD player
- L-shaped dinette w/ hi-gloss teak table (accommodates 4)

---

## Master Head

---

- Towel bar
- Deck hatch
- Exhaust fan
- Amtico flooring
- Vacu-flush head
- 24v & 110v Lighting
- 110v Ground fault outlet
- Mirrored medicine cabinet
- Vanity w/ Corian counter top & sink
- Private shower w/ automatic enclosed sump pump & overhead lighting

---

## Guest Head

---

- Towel bar
- Exhaust fan
- Amtico flooring
- Vacu-flush head
- 24v & 110v Lighting
- 110v Ground fault outlet
- Mirrored medicine cabinet
- Vanity w/ Corian counter top & sink
- Private shower w/ automatic enclosed sump pump & overhead lighting

---

## Galley

---

- Amtico flooring
- Corian countertops
- Water tank level gauge
- Recessed two-burner stove
- Sub-Zero under counter freezer
- Sub-Zero under counter refrigerator
- Spacious storage drawers & cabinets
- Sharp Carousel microwave oven / convection oven

---

## Helm / Electronics and Navigation

---

- Weather fax
- AP 25 auto pilot
- FLIR night vision



- Northstar 6000i GPS
- (2) Icom 602 VHF radios
- ACR 100 remote spot light
- Stereo system w/ CD player
- Furuno FCV 582 sounder w/ 1kW transducer
- Furuno NAV NET GPS / Plotter / 64nm radar

---

## Flybridge

---

- Air horns
- Trim tabs
- Fuel gauges
- #6 Teaser reels
- Hydraulic steering
- Hydraulic controls
- Electrical sub-panel
- Engine synchronizer
- Engine alarm system
- Fiberglass Helm Pod
- Anchor windlass remote
- Lewmar hatch w/ screen
- Molded-in spreader lights
- Electronic low idle control
- Fuel transfer rocker switch
- Nautical Design Helm chairs
- Three-sided EZ2CY enclosure
- Kenmore refrigerator w/ freezer
- CAT electronic display monitors
- (2) Recessed hardtop Helm lights
- Angled Helm Station & 360 degree visibility
- Lounge seating w/ pleated cushions & storage
- Ocean Yachts factory hardtop w/ four-sided enclosure
- Aluminum Flybridge ladder & aft safety rail w/ (6) rod rocket launcher

---

## Deck

---

- Rope Deck pipe
- (2) Hawse pipes
- Aluminum bow rail
- Forward Deck hatch
- Bow pulpit w/ anchor roller
- Aluminum, powder-coated window rails

- 10" Cleats - (3) bow, (4) spring, (2) stern
- Lewmar Concept II Automatic anchor windlass

## Engine and Mechanical Equipment

---

- Alternators
- Electrical outlet
- Lazarette & bilges
- Fuel transfer pump
- (2) 4" Bilge blowers
- (2) Nibral propellers
- External sea strainers
- (2) Aquamet 22 shafts
- High bilge water alarm
- Bronze rudders & struts
- (2) Engine Room blowers
- Awlgripped Engine Room
- Electric fuel priming pump
- (3) Automatic bilge pumps
- Under water exhaust system
- Sea cocks (quick action ball valve)
- Fresh water spigot in Engine Room
- Sound & heat insulated Engine Room
- Fuel filters - main engines & generator
- Heat recovery bottles - engines & generator
- Fuel shut-off valves (quick action ball valve)
- Zoned air conditioning w/ reverse cycle heating
- Twin 575 hp. Diesel I/B 2006 CAT C-9A's w/ 1800 hrs.
- Automatic fire extinguisher system - engines & generator
- CAT twin diesels water cooled w/ lubricating oil & recovery systems

## Water System

---

- Faucets
- Central main draft aft
- Water pressure system
- 42 gallon Holding tank
- Vacu flush Head System
- 20 gallon Hot water heater
- Dockside water connection
- 24v Automatic enclosed shower sump pump

---

## Electrical System / Equipment

---

- Electrical outlets
- Navigation lights
- 60 amp Converter
- Engine Room lighting
- Battery parallel system
- (4) Heavy duty batteries
- Cockpit courtesy lighting
- 50' 50A / 240v Shore cord
- Dyna plate ground system
- Automatic battery charger
- 24v & 120v Electrical system
- Internal panel w/ circuit breaker
- Deep cycle / cranking battery (one bank)
- Voltmeters & battery condition indicator
- 8.0kW Fresh water cooled diesel generator
- Back lighting on electrical panel & Flybridge instruments

---

## Cockpit / Fishing Equipment

---

- Center rigger
- Tackle locker
- (4) Rod holders
- Under water lights
- Nautical Design fighting chair
- Transom door & hinged gate
- Fresh & salt water wash downs
- Transom-mounted live bait well
- Engine Room & Lazarette access
- Large insulated fish boxes w/ pump out
- Insulated drink box (in Salon entry step)
- Bait prep center w/ freezer & fresh water sink
- Cable master automatic shore power cord reel
- Dockside water connection & fresh water spigot

---

## Exclusions

---

Owner's personal gear and items.

---

## Salesman's Comments

---

This 2006 42' Ocean Super Sport features a two-Stateroom, two-Head layout with a luxurious Salon, L-shaped dinette, huge storage under Galley and teak interior. Caterpillar 2,000 hour service, bottom paint and routine maintenance done!

## **Исключения**

---

При продаже яхты исключаются личные вещи владельца.

## **Отказ от ответственности**

---

Компания предоставляет описание судна или яхты добросовестно, но не может гарантировать точность этой информации, а также не ручается за техническое состояние. Покупатель должен проинструктировать своих агентов или оценщиков исследовать представленную информацию более подробно, по собственному желанию. Продажа судна или яхты, изменение цены или снятие с продажи будет происходить без предварительного уведомления.

# ФОТОГРАФИИ

**Profile 2**



**Master Stateroom - TV**



**Salon 1 - Sofa**



**Salon 2 - TV**



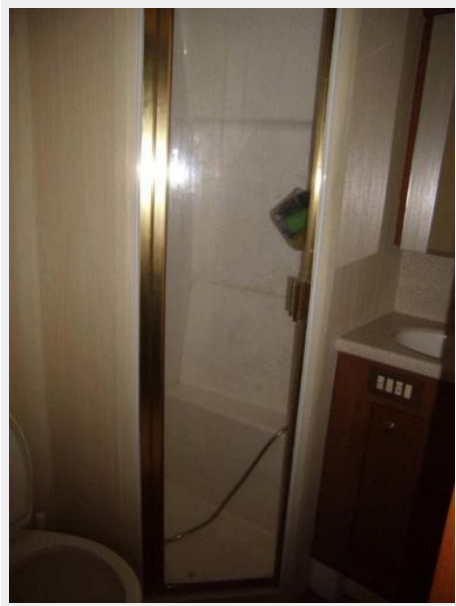
**Master Head 1**



**Master Head 2**



**Guest Head**



**Galley 1**



**Galley 2**



**Galley 3**



**Helm / Electronics & Navigation 1**



**Helm / Electronics & Navigation 2**



**Helm / Electronics & Navigation 3**



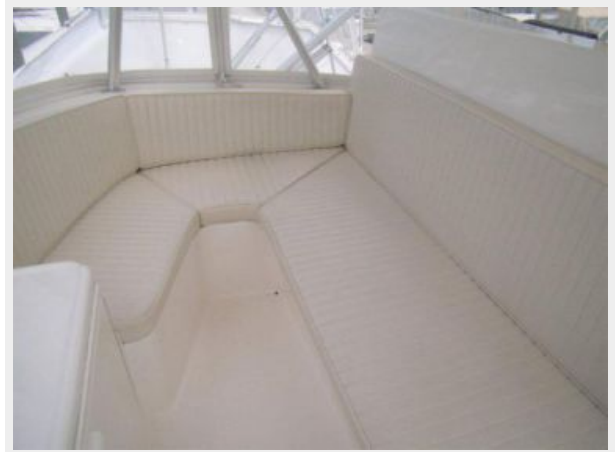
**Helm / Electronics & Navigation 4 -  
Compass**



**Deck 1 - Bow**



**Deck 2 - Seating**



**Deck 3 - Seating**

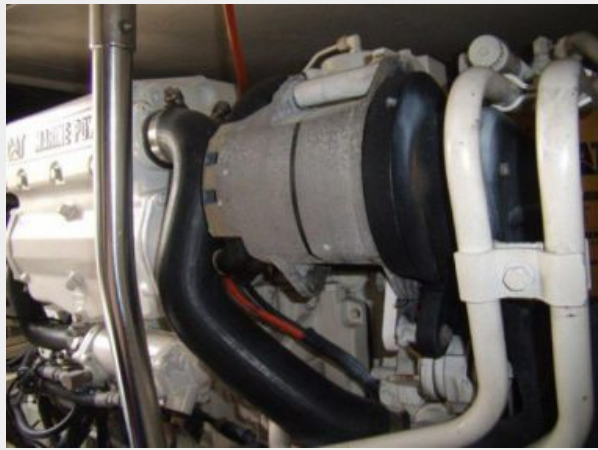


**Deck 4 - Helm Seats**





**Engine & Mechanical Equipment 1**



**Engine & Mechanical Equipment 2**



**Engine & Mechanical Equipment 3**



**Engine & Mechanical Equipment 4**



**Engine & Mechanical Equipment 5**



**Engine & Mechanical Equipment 6**



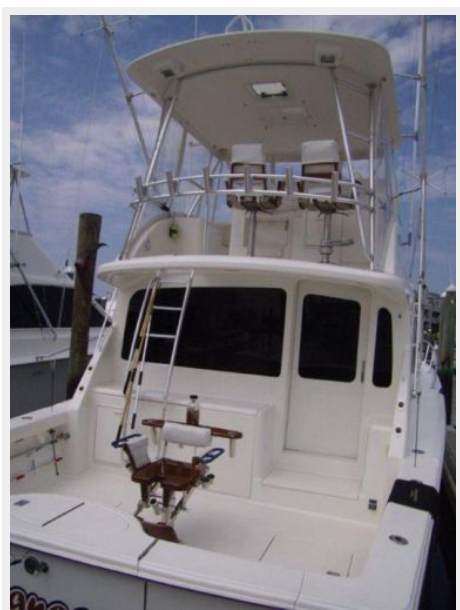
### Electrical System / Equipment 1 - Electrical Panel



### Electrical System / Equipment 2 - Generator



### Cockpit / Fishing Equipment 1 - Cockpit



### Cockpit / Fishing Equipment 2



### Cockpit / Fishing Equipment 3



### Cockpit / Fishing Equipment 4



### Rear Profile



# КОНТАКТЫ

---

Андрей Шестаков (Andrey Shestakov) – ведущий яхтенный брокер отдела продаж яхт и судов компании Shestakov Yacht Sales Inc. Официальный представитель Shestakov Yacht Sales Inc. для русскоговорящих клиентов в центральном офисе компании в Майами/Форт Лодердейл/Флорида/США.

## Контактная информация

---

Email: [andrey@shestakovyachtsales.com](mailto:andrey@shestakovyachtsales.com)

Web: [shestakovyachtsales.com](http://shestakovyachtsales.com)

## Телефоны

---

Краснодарский край: **+7(918)465-66-44**

США, Майами, Флорида: **+1(954)274-4435**

## Время работы

---

Понедельник – Суббота: **9:00 - 21:00**  
EDT

Воскресенье: **Закрето**

## Адрес

---



Harbour Towne Marina, 850 NE 3rd St,  
STE 213, Dania, FL 33004