

DRIFT WOOD — SCHUCKER



Судостроитель: SCHUCKER

Длина общая: 40' 0" (12.19m)

Год постройки: 1978

Мин. осадка: 3' 2" (0.97m)

Модель: Траулер

Цена: ЦЕНА ЯХТЫ ПО ЗАПРОСУ

Местонахождение: United States

Купить Drift Wood — SCHUCKER а также выбрать подходящую вам яхту из нашего каталога яхт вам поможет опытный яхтенный брокер Андрей Шестаков. На сегодняшний день компания Shestakov Yacht Sales Inc. имеет большое количество яхт в собственном списке продаж, а также тесно сотрудничает со всеми крупными яхтенными производителями по всему миру.

Для того чтобы купить яхту Drift Wood — SCHUCKER а также проконсультироваться по любому вопросу связанному с покупкой, продажей, чартером яхт позвоните по телефону **+7(918)465-66-44**.

ОГЛАВЛЕНИЕ

ОГЛАВЛЕНИЕ	2
ХАРАКТЕРИСТИКИ	3
Обзор	3
Основная информация	7
Размеры	8
Скорость, вместимость и масса	8
Размещение	8
Корпус и палуба	8
Информация о двигателе	8
ФОТОГРАФИИ	9
КОНТАКТЫ	16
Контактная информация	16
Телефоны	16
Время работы	16
Адрес	16

ХАРАКТЕРИСТИКИ

Обзор

This one of a kind Schucker 440 has been extensively cruised and customized. She is loaded with equipment, and is set up to be self sufficient away from the dock for long term cruising or living aboard.

"Drift Wood" is exceptionally clean and well maintained.

In 2011 her sailing rig was adapted, and the yacht was customized into a comfortable and efficient trawler perfect for the Great Loop.

With so many major upgrades, Drift Wood is uniquely optimized for a cruising couple desiring spacious living quarters and a compliment of well thought out systems. Her approximate cruising range is 1,300 miles. Drift Wood is quite possibly the perfect long range live aboard cruiser.

Her tabernacle main mast has been shortened, and her mainsail is now used as a steadying sail. Her masts can now be lowered by just one crew member.

See the "Full Specs" section for a complete list of equipment.

Other highlights include:

- 88 HP Yanmar Diesel (New in 1999)
- 3.8 KW Westerbeke Generator
- Lengthened Waterline/ Integral Swim Platform
- Custom Redesigned Interior
- Two Custom Bilge Keels
- Custom Hinged Transom Door
- 16,000 BTU Air Conditioning
- Four 85W Solar Panels (340W Total)
- Custom 12V Powered Dinghy Lift
- Large 9 Cu Ft. Nova Cool Refrigeration
- Imron Hull Paint (2009)
- Bottom painted 2014- No blisters (ablative paint)
- Deck Painted (2014)

Boat Name Drift Wood **Dimensions** LOA: 40 ft 0 in LWL: 36 ft 4 in Minimum Draft: 3 ft 2 in
Displacement: 26000 lbs **Engines** Engine 1: Engine Brand: Yanmar Year Built: 1999 Engine Model: 4JH2-DTE Engine Type: Inboard Engine/Fuel Type: Diesel Engine Hours: 5500
Propeller: 3 blade propeller Drive Type: Direct Drive Engine Power: 88 HP **Tanks** Fresh Water

Tanks: (188 Gallons) Fuel Tanks: (188 Gallons) Holding Tanks: (24 Gallons)

Walk Through

Entering through the heavy sliding doors in aft cockpit gains access to the comfortably appointed pilothouse. The cabin soles throughout the yacht are carpeted. There is a large convertible couch to starboard, with a folding table and single lazy chair to port. Twin pedestal mounted helm seats are found forward to both port and starboard. There are also additional sliding access doors to port and starboard. The pilot house has an open feel with wall to wall windows. The helm is to starboard with complete electronics and electrical controls. Moving forward, down three steps you find a large U-shaped galley to starboard and an apposing office/navigation area to port. A teak door separates the master stateroom area forward. The master berth features a pullman style queen bed to starboard with copious amounts of storage below and to port. The fore-peak of the yacht is home to a private head compartment. The spacious head offers plenty of storage and a full size stand up shower.

Custom features/ Additional Equipment

- Custom stern was extended 3 additional feet to create an integral swim platform as well as add LWL.
- Custom fixed bilge keels- 8' x 18" inch fins attached aft of center line on both sides increases directional stability
- Custom transom hinged door- facilitates easy access onboard vessel via swim platform/ dinghy
- Custom interior w/ full size refrigerator and office/ navigation area
- Built in washing machine (110V- Power off generator)
- Tabernacle mast and mizzen
- 4 85W solar panels with MPPT controller (340 watts total)
- Custom dinghy lift/ davits w/ remote 12V lifting winch
- LED anchor lights, automatic
- LED deck lights
- Security lighting system- panic switch activates all exterior flood lights
- Custom bob-stay w/ rod rigging
- All original hardware included to convert the vessel back to sailing configuration (except main mast, running and standing rigging)
- Hundreds of spare engine, electrical, and plumbing parts
- Spare propeller and shaft
- Complete watermaker (not currently installed)

Electronics

Drift Wood's electronics and navigation package is loaded with redundancy. There are backups for most everything.

- 2V Island Time PC w/ Cap'n software with all charts, twin LCD displays
- Furuno 1731 4KW Radar

- Simrad AP-20 autopilot (interfaced to GPS)
- Garmin GPSMAP 162
- Garmin GPS 48
- Icom IC-718 SSB radio w/ ICOM AT-130 Tuner (antenna needs to be mounted)
- SCS PC II Pactor Controller for Email over SSB
- Icom M100 & Si-Tex Ultima VHF radios w/ seperate antennas
- Humminbird 2000 & 160 depth finders
- Wifi receiver/ booster
- Optimus AM/FM stereo w/ CD changer & multiple speakers w/ remote

Galley

The galley has been redesigned to allow a massive amount of food storage and a full size vertical refrigerator and separate freezer. Her galley even houses a hidden top loading clothes washer.

- 9 Cu. Ft. Nova Kool refrigerator and freezer (12V or 110V)
- Four burner LPG Range w/ Oven
- Two 5lb aluminum LPG tanks mounted on cabin top
- Double stainless sink
- Avanti top loading washing machine (hidden under counter)
- Microwave
- Dedicated storage for galley ware
- Multiple large pantry's

Mechanical/ Fuel System

Drift Wood's owners report a very economical fuel consumption at 3/4 gallon per hour at 6 knots. Approximately 7 miles per gallon of diesel, giving the yacht a range of approximately 1300 miles!

Mechanical:

- Yanmar 4JH2-DTE 88hp diesel (5,500 hours, new in 1999)
- Westerbeke 3.8KW Generator (500 hours)
- Morse single lever engine control
- Watermaker -Prowatermaker, 20GPH- 150 hours (not currently installed, but plumbed and wired. Included with sale)
- Cruise Air 16,000 BTU reverse cycle air conditioning
- Force 10 six gallon water heater
- Hynautic hydraulic steering (Helm seals replaced (2014))
- VDO Rudder indicator
- Shurflow freshwater pressure and wash-down pumps

Fuel System

- Three Racor 500 fuel filters (two main engine, one generator)
- Electric pump for fuel polishing

Electrical

- Twin 30A 110V shorepower system
- Heart interface 2500W inverter
- Link 2000 Battery monitor/ inverter control
- 100A Pathmaker battery combiner
- 800AH AGM house bank (four 4D batteries- New in 2011)
- One Group 27 AGM engine start battery
- One group 31 AGM generator start battery
- Four 85W solar panels mounted on rooftop
- 80A, internally regulated alternator

Deck equipment/ Sails

In 2013 Diift Wood was converted from a motor sailor to a trawler.

- Deck painted 2014
- All windows replaced
- Main mast shortened to approximately half original height.
- Pro-furl on steadying sail
- Simpson Lawrence 12V windlass w/ cover
- 45lb CQR anchor w/ 190' 5/16" BBB chain
- 35lb Danforth anchor w/ 40' 5/16 HT chain & 300' 3/4 rode
- Rodes marked every 25ft
- Fenders
- Docklines

Head and Plumbing

Diift Wood features a large head with full stand-up separate shower stall.

- Raritan PHII manual head
- Three way diverter valve
- 25 Gallon holding tank w/ macerator pump for overboard discharge
- Show sump pump
- Built in clothes washing machine (110V)

Fresh water/ Raw Water System

- Whole house carbon water filter
- 3.8 GPM pressure pump w/ accumulator tank
- 5 bronze seacocks

- Bronze sea strainers
- Raw water wash-down pump
- Rain water catchment system

Brokers Remarks

This one of a kind Schucker 440 has been extensively cruised and customized. She is loaded with equipment, and is set up to be self sufficient away from the dock for long term cruising or living aboard.

This rare 440 version of the Schucker Motor-sailor is exceptionally clean and well maintained.

In 2011 her sailing rig was adapted, and the yacht was customized into a comfortable and efficient trawler perfect for the Great Loop.

With so many major upgrades, Drift Wood is uniquely optimized for a cruising couple desiring spacious living quarters and a compliment of well thought out systems. Her approximate cruising range is 1,300 miles. This is quite possibly the perfect long range live aboard cruiser.

Her tabernacle main mast has been shortened, and her mainsail is now used as a steadying sail. Her mast can now be lowered by just one crew member. She has a long list of major upgrades including a lengthened waterline/ integral swim platform, hinged transom door, bilge keels, a powerful 88 HP Yanmar diesel, redesigned interior and so much more!

See the "Full Specs" section for a complete list of equipment.

Other highlights include:

- 16,000 BTU Air Conditioning
- Upgraded 88hp Yanmar diesel (new in 1999- 5500 hours)
- Westerbeke 3.8KW Generator (500 hrs)
- Imron Hull Paint (2009)
- Deck Painted (2014)
- Large 9 Cu Ft. Nova Cool Refrigeration
- Bottom painted 2014- No blisters (ablative paint)

Основная информация

Тип судна: Траулер

Подкатегория: Long Range Cruiser

Модельный год: 1978

Год постройки: 1978

Страна: United States

Размеры

Длина общая: 40' 0" (12.19m)

Длина по ватерлинии: 36' 4" (11.07m)

Мин. осадка: 3' 2" (0.97m)

Скорость, вместимость и масса

Водоизмещение: 26000 Pounds

Вместимость воды: 188 Gallons

Вместимость сточного бака: 24 Gallons

Объем топливного бака: 188 Gallons

Размещение

Всего кают: 1

Корпус и палуба

Материал корпуса: Fiberglass

Информация о двигателе

Двигатели: 1

Производитель: Yanmar

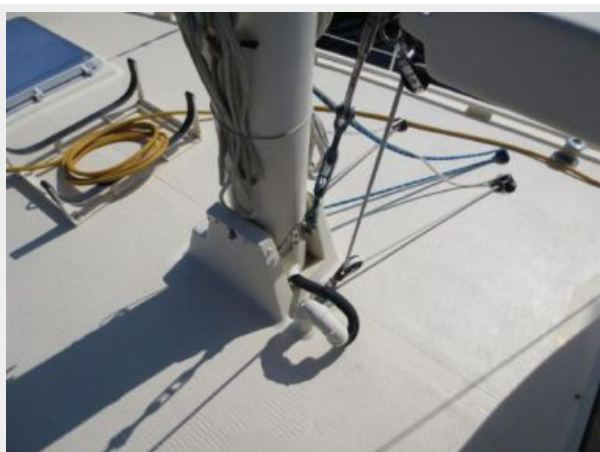
Модель: 4JH2-DTE

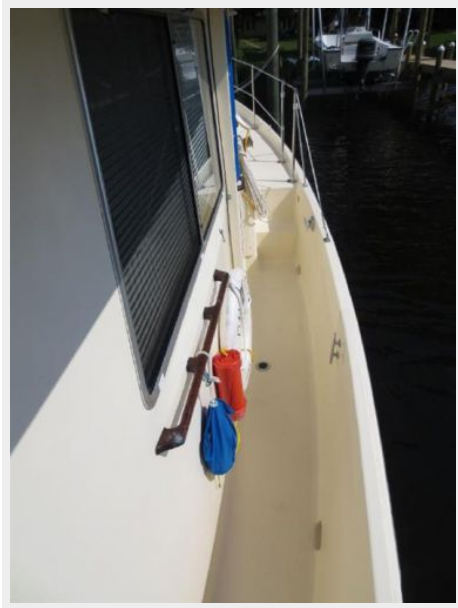
Тип двигателя: Inboard

Тип топлива: Diesel

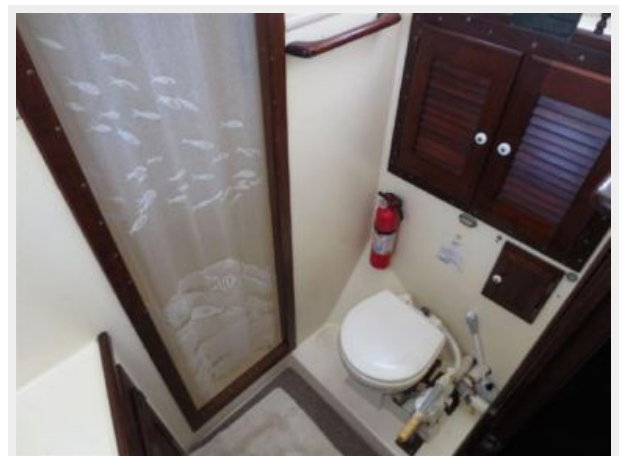
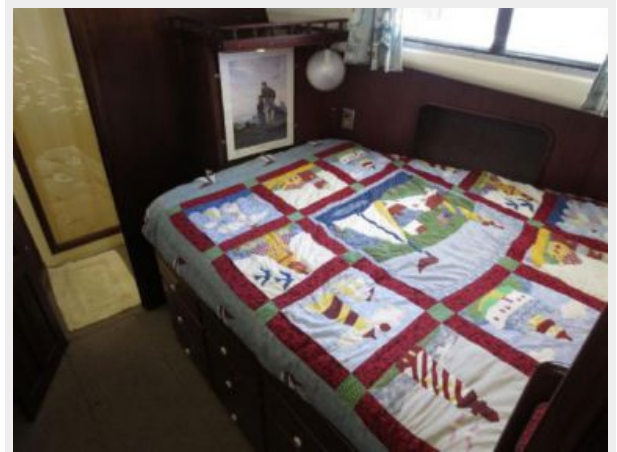
ФОТОГРАФИИ















КОНТАКТЫ

Андрей Шестаков (Andrey Shestakov) – ведущий яхтенный брокер отдела продаж яхт и судов компании Shestakov Yacht Sales Inc. Официальный представитель Shestakov Yacht Sales Inc. для русскоговорящих клиентов в центральном офисе компании в Майами/Форт Лодердейл/Флорида/США.

Контактная информация

Email: andrey@shestakovyachtsales.com

Web: shestakovyachtsales.com

Телефоны

Краснодарский край: **+7(918)465-66-44**

США, Майами, Флорида: **+1(954)274-4435**

Время работы

Понедельник – Суббота: **9:00 - 21:00**
EDT

Воскресенье: **Закрито**

Адрес



Harbour Towne Marina, 850 NE 3rd St,
STE 213, Dania, FL 33004