

MONEYPENNY — VIKING



Судостроитель: VIKING

Год постройки: 2002

Модель: Катер для спортивной рыбалки

Цена: **ЦЕНА ЯХТЫ ПО ЗАПРОСУ**

Местонахождение: United States

Длина общая: 61' 0" (18.59m)

Ширина: 18' 2" (5.54m)

Мин. осадка: 5' 4" (1.63m)

Крейс. скорость: 30 Kts. (35 MPH)

Макс. скорость: 36 Kts. (41 MPH)

Купить **Money Penny — VIKING** а также выбрать подходящую вам яхту из нашего каталога яхт вам поможет опытный яхтенный брокер Андрей Шестаков. На сегодняшний день компания **Shestakov Yacht Sales Inc.** имеет большое количество яхт в собственном списке продаж, а также тесно сотрудничает со всеми крупными яхтенными производителями по всему миру.

Для того чтобы купить яхту **Money Penny — VIKING** а также проконсультироваться по любому вопросу связанному с покупкой, продажей, чартером яхт позвоните по телефону **+7(918)465-66-44**.

ОГЛАВЛЕНИЕ

ОГЛАВЛЕНИЕ	2
ХАРАКТЕРИСТИКИ	4
Обзор	4
Основная информация	4
Размеры	4
Скорость, вместимость и масса	4
Размещение	5
Корпус и палуба	5
Информация о двигателе	5
ПОДРОБНОЕ ОПИСАНИЕ	6
Salon	6
Galley	6
Master Stateroom	7
Master Head	7
VIP Stateroom	7
Forward Guest Head	8
Guest Stateroom	8
Starboard Guest Head	8
Companionway	8
Cockpit	9
Mechanical	10
Flybridge	10
Electronics	11
Electrical	12
Deck and Hull	12
Exclusions	12
Исключения	13
Отказ от ответственности	13

ФОТОГРАФИИ	14
КОНТАКТЫ	21
Контактная информация	21
Телефоны	21
Время работы	21
Адрес	21

ХАРАКТЕРИСТИКИ

Обзор

This 61 Viking is a standout inside and out and is the best priced 61 on the market. Money Penny is extremely well maintained and has all the right equipment and upgrades. New teak decks were installed in 2010 and all the bridge seating was renewed this year. She has striking new flag blue hull painted in 2013 and sports the updated brow mask in metallic black. Full time crew is keeping her sharp and ready to show.

Основная информация

Тип судна: Катер для спортивной рыбалки

Подкатегория: Convertible

Модельный год: 2002

Год постройки: 2002

Страна: United States

Верх: Full / Tuna Tower

Открытая палуба мостика: Да

Кубрик: Да

Размеры

Длина общая: 61' 0" (18.59m)

Ширина: 18' 2" (5.54m)

Мин. осадка: 5' 4" (1.63m)

Длина привального бруса: 61' 9" (18.82m)

Скорость, вместимость и масса

Крейс. скорость: 30 Kts. (35 MPH)

Макс. скорость: 36 Kts. (41 MPH)

Вместимость воды: 310 Gallons

Объем топливного бака: 2000 Gallons

Размещение

Всего кают: 3

Всего ком. состава: 3

Корпус и палуба

Материал корпуса: Fiberglass

Информация о двигателе

Двигатели: 2

Производитель: MTU

Модель: MTU2000

Тип двигателя: Inboard

Тип топлива: Diesel

ПОДРОБНОЕ ОПИСАНИЕ

Salon

- 46" Samsung Smart TV on stb salon credenza, new 2013
- Entertainment Center with DVR, CD/DVD player, Xbox 360 game system
- Harmon Kardon upgraded stereo receiver
- Viking Home Theater
- SAT TV - KVH5, new 2010
- Electric Panel
- Custom Pneumatic salon door opener
- Ultra Leather sofa with storage
- Teak face mirror above dinette seats
- Teak lambrequins
- Dimmer switches on overhead halogen lights
- Amtico Teak flooring runner w/solid teak trim
- Teak wire box
- Custom teak cocktail table, hi/lo with Marlin inlay
- Security camera control box for Engine & GPS monitoring

Galley

- U-shaped galley
- Large capacity undercounter Sub Zero refrigeration (3 units, 1 freezer & 2 refrigerator)
- New control panels and condenser
- Upper cabinet storage fwd in galley with pull out drawers
- Teak dinette table
- Custom Amtico Teak flooring in galley and dinette
- Corian galley countertop, high polished w/teak bullnose
- Microwave/convection oven
- Garbage disposal
- Kenyon Lite-touch series black 4-burner surface mount stove
- Custom cabinets with coffeemaker & toaster behind dinette designed by owner
- Teak backsplash outboard Teak sealer
- 2x roll-out shelves in cabinet below stovetop
- Water level gauge
- Storage fwd above dinette
- Water pump indicator
- Storage w/pull out drawer above companionway steps
- Teak dinette table with teak pedestal and base

Master Stateroom

- Athwartship Queen size bed w/storage below
- Cedar-lined hanging locker
- Reading lights
- 5x shelves in port closet
- Stb closet with rod storage
- Teak headboard
- Teak frame hides TV w/picture
- Sony 20" flat screen TV with dedicated SAT receiver
- DVD/VCR
- Stereo/CD player
- Custom wallpaper
- System #1 upgraded mattress and pillow top spread
- Raised height entry credenza with additional drawer space
- His & Hers walk-in closets, aft
- Custom rod storage in closets

Master Head

- Amtico Teak flooring
- Custom wallpaper
- Corian vanity countertop w/bone sink
- Solid brass fixture upgrade
- Headhunter head system
- Mirrored ceiling
- One-piece custom frameless shower door
- Teak face on lower vanity
- Mirror around upper vanity insert
- Teak picture framing around mirror backing

VIP Stateroom

- Double size port lower berth w/stb single upper berth (VIP arrangement)
- Headliner material on fwd bulkhead at head of bed
- Teak cabinet above port berth
- Custom Teak valance on starboard side
- Storage below both berths
- Private access to fwd head
- 15" Flat screen TV DVD/VCR combo with dedicated SAT receiver
- Custom wallpaper
- Mattress system #1 and #2 upgrades and pillow top spreads

- Heavy teak bunk rails on both bunks
- Foredeck hatch w/hinges on fwd side of opening

Forward Guest Head

- Headhunter head system
- Mirrored ceilings
- Brass fixture upgrade
- Corian vanity countertop w/bone sink
- Teak face on lower vanity
- Mirror around upper vanity insert
- Custom wallpaper
- Amtico Teak flooring
- Large guest shower

Guest Stateroom

- Extra wide upper/lower berths w/storage below lower berth
- Custom wallpaper
- Closet with shelves in place of washer/dryer
- Cedar-lined hanging locker
- Heavy teak rails on upper and lower bunks
- Stereo volume control
- 13" Flat screen with dedicated SAT receiver and connected to engine room cameras

Starboard Guest Head

- Custom Layout, aft of stateroom
- Headhunter head system
- Mirrored ceilings
- Brass fixture upgrade
- Corian vanity countertop w/bone sink
- Teak face on lower vanity
- Mirror around upper vanity insert
- Custom wallpaper
- Amtico Teak flooring
- Large guest shower

Companionway

- Custom storage to starboard
- Central vacuum system
- Lighting
- Wrapped hatch carpet installation
- Bilge access (Awlgrip bilges)

Cockpit

- Custom tackle center
- Eskimo ice machine with discharge into cockpit sole - new in 2013
- Cutting board
- Awlgrippped lazarette
- Straps for engine room door and transom
- Livewell in sole
- Y-valve for fresh & saltwater washdown system
- S/S gas springs for fishbox lids
- S/S gas springs for P&S sole box lids
- 4x upgraded cockpit stereo speakers to Poly planers
- White cord for standard Cablemasters
- Transom coaming solid with fish door
- Headhunter Mach 5 saltwater washdown pump
- Storage locker
- Bluewater Teak fighting chair w/rocket launcher & offset pedestal
- Cockpit cooking grill - renewed in 2014
- Fiberglass boarding box
- Cable TV & phone connection
- Dockside electric & water connection
- Freshwater washdown
- Fishbox
- Salon step refrigerated chill box
- 4x rod holders
- Self-bailing cockpit oversized drain box
- Tackle cabinet w/freezer
- Custom Teak deck - new in 2010
- Custom Teak covering boards
- Custom Teak coaming boards
- Teak ladder treads
- Spare props, mounts - custom mounting
- Air vents w/large velocity fan system to circulate air flow in cockpit
- Quick connects for bladder fuel transfer
- Tackle center cushions - 2010
- New Fusion Radio with remote for cockpit only - 2014

Mechanical

- New turbos, July 2014
- Services up to date and records available
- Village 1600 GPD watermaker w/remote start in galley, rebuilt in 2014
- 110v oil change pump
- Headhunter jet pack pumps
- Painted axial exhaust fans white
- All pumps in engine room are painted Snow White
- Oil change system
- Dual power steering pumps (one off each engine)
- 2x tool boxes, powdercoated Snow White
- Backup seawater pump for A/C system
- Headhunter freshwater pump in place of standard pump
- Aux. freshwater pump
- 110v outlet on fwd bulkhead of engine room
- Awlgripped engine room
- Add'l fuel tank fwd for a total of 3 tanks
- Add'l 21.5 kW generator
- Port generator gas/water separator
- Stb generator gas/water separator
- Awlgripped brass thru-hulls & sea strainers in engine room & fwd bilges
- Fuel filters painted Snow White
- Shelf over both generators
- Manifold fuel transfer pumps
- 110v outlet port aft bulkhead of engine room
- Barna clean system installed Dec. 2012
- 5 Blade Veem props, new 2012

Flybridge

- All new seat cushions in 2014
- Pipewelder's Tuna Tower
- Bluewater teak helm chairs
- Bluewater Teak companion chair
- DDEC trolling valves
- DDEC single lever controls for pod
- Custom helm pod
- Recessed electronics box
- Freshwater outlet on bridge
- Bridge installed without exposed fasteners
- Single lever controls
- Fiberglass tower sunshade

- Tower seat & backrest
- Track-to-track bridge enclosure
- Cockpit fly cover
- Recessed hardtop lights
- U-shaped handrail under hard top
- 4x Quartz lights
- Rupp center rigger
- Outrigger auto lock arms
- Start/stops with activation button in tower
- Top loading insulated drink box in aft end of starboard benchseat
- 6x Tower leg rod holders
- 8x Aft rail rod holders
- Freshwater spigot in tower
- Drop down overhead radio box
- Tackle center cushions - custom new in 2010
- Custom backrest cushion on bridge
- 4x Rupp spreader outriggers - new 2011
- Drip dry foam flybridge cushions, 2014
- Drip dry foam cushions for tackle center, 2010
- 2x upgraded flybridge speakers to M8 JL Audio
- Storage freezer
- Electronics box lids with gas springs
- Lighted compass
- Fire control system
- Dual thermostat for large freezer box
- Refrigerated drink box converted to freezer

Electronics

- 2x ICOM M422 VHF radios, 2013
- 2x ICOM M502 VHF radios
- ICOM SSB radio
- Garmin 5212, new 2010
- 96 Mile Furuno Radar 15" HD display
- 2x Pyrometer gauges
- Tron & Tron SAT phone/Panasonic phone system w/cordless handset
- Garmin GPS map 7415, new 2014
- Furuno FCV1200 color sounder w/ 15" HD display, new 2013
- Furuno RD 33 digital sounder, water temp
- Fusion IP 600 stereo w/amplifier & 6 speakers, new 2014
- ACR spotlight, new 2010
- Furuno Nav. Auto pilot, new 2013
- Rotating Flir, new 2013

- Radar, Autopilot and GPS all interfaced

Electrical

- 2x ONAN 21.5 kW generators
- Dual 50 amp shore power cords on cablemaster reels
- Heavy duty batteries w/fiberglass box
- Battery chargers
- Battery disconnect switches
- Battery paralleling
- Navigation lights - replaced with LED in 2013
- 120v duplex receptacles
- Voltage stabilizer transformer
- Bonded electrical system w/ground plate
- Color-coded & labeled wiring system
- Engine room lights
- Glendinning cablemasters
- Instrument panel lights
- 24v & 120v lighting throughout
- Master control switch, voltmeter, ampmeter & frequency meter

Deck and Hull

- Custom anchor system/windlass
- Add'l fuel tank for a total of 3 tanks
- Oval exhaust outlets
- Faired in main & intermediate struts
- Underwater transom lights
- Flag blue hull painted December 2013
- Recessed trim tab covers
- Molded in thru-hull fittings including fuel vent
- Deleted bow pulpit & bow rail
- 600' anchor line w/15' chain
- Freshwater washdown at bow inside anchor locker
- Rub rail painted to match gelcoat
- Recessed zinc cover

Exclusions

Owner's personal effects

Исключения

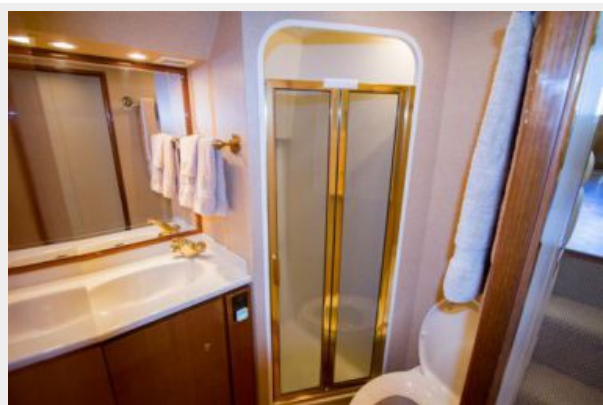
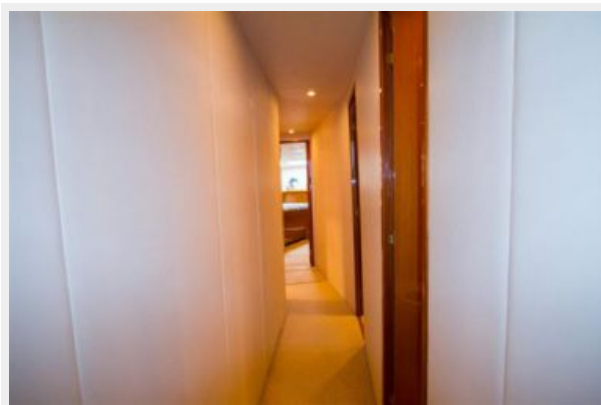
При продаже яхты исключаются личные вещи владельца.

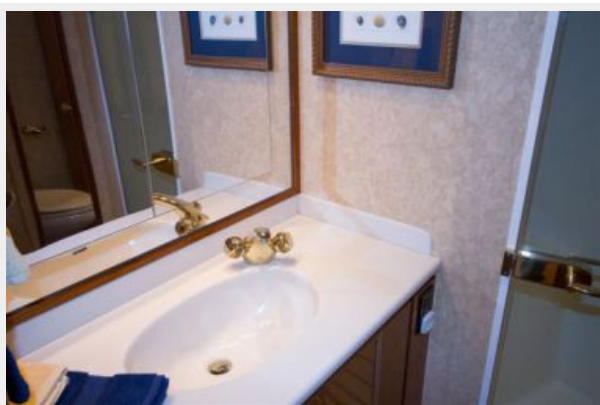
Отказ от ответственности

Компания предоставляет описание судна или яхты добросовестно, но не может гарантировать точность этой информации, а также не ручается за техническое состояние. Покупатель должен проинструктировать своих агентов или оценщиков исследовать представленную информацию более подробно, по собственному желанию. Продажа судна или яхты, изменение цены или снятие с продажи будет происходить без предварительного уведомления.

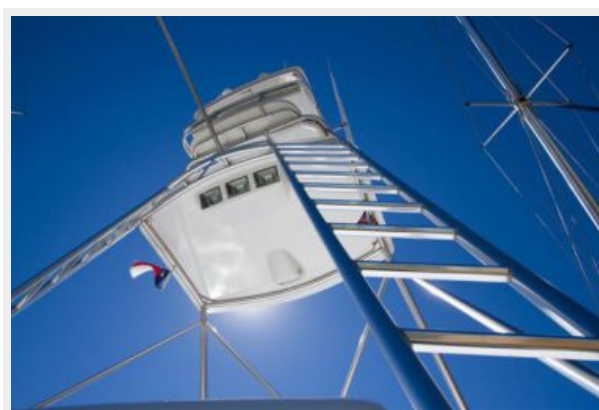
ФОТОГРАФИИ

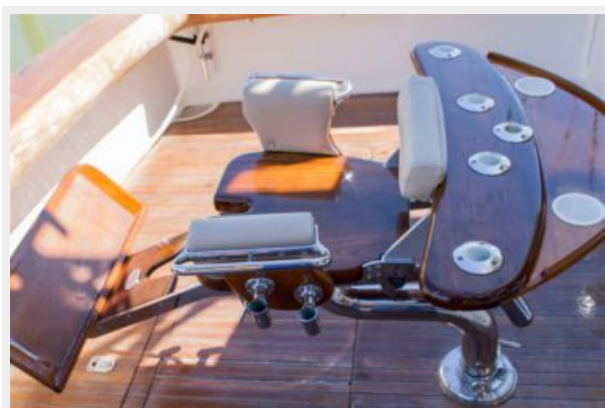
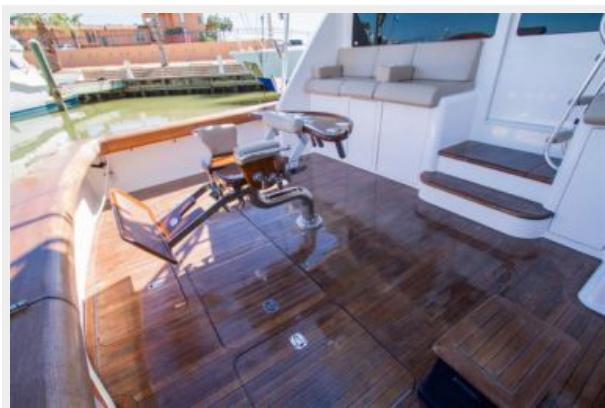














КОНТАКТЫ

Андрей Шестаков (Andrey Shestakov) – ведущий яхтенный брокер отдела продаж яхт и судов компании Shestakov Yacht Sales Inc. Официальный представитель Shestakov Yacht Sales Inc. для русскоговорящих клиентов в центральном офисе компании в Майами/Форт Лодердейл/Флорида/США.

Контактная информация

Email: andrey@shestakovyachtsales.com

Web: shestakovyachtsales.com

Телефоны

Краснодарский край: **+7(918)465-66-44**

США, Майами, Флорида: **+1(954)274-4435**

Время работы

Понедельник – Суббота: **9:00 - 21:00**
EDT

Воскресенье: **Закрито**

Адрес



Harbour Towne Marina, 850 NE 3rd St,
STE 213, Dania, FL 33004