

GANDY DANCER — MONTEREY



Builder: MONTEREY

Year Built: 1993

Model: Sport Fisherman

Price: PRICE ON APPLICATION

Location: Mexico

LOA: 65' 0" (19.81m)

Beam: 18' 0" (5.49m)

Max Draft: 5' 6" (1.68m)

Cruise Speed: 25 Kts. (29 MPH)

Max Speed: 35 Kts. (40 MPH)

Our experienced yacht broker, Andrey Shestakov, will help you choose and buy a yacht that best suits your needs **Gandy Dancer — MONTEREY** from our catalogue. Presently, at Shestakov Yacht Sales Inc., we have a wide variety of yachts available on our sale's list. We also work in close contact with all the big yacht manufacturers from all over the world.

If you would like to buy a yacht **Gandy Dancer — MONTEREY** or would like help answering any questions concerning purchasing, selling or chartering a yacht, please call **+1(954)274-4435**

TABLE OF CONTENTS

TABLE OF CONTENTS	2
SPECIFICATIONS	4
Overview	4
Basic Information	4
Dimensions	4
Speed, Capacities and Weight	4
Accommodations	4
Hull and Deck Information	5
Engine Information	5
DETAILED INFORMATION	6
Salon	6
Galley	6
Companionway	6
Master Stateroom	6
Master Stateroom Head	7
Starboard Bow Stateroom	7
Port Bow Stateroom	7
Bow Head	7
Starboard Aft Stateroom	8
Starboard Head	8
Cockpit	8
Fishing Equipment	9
Flybridge	9
Electronics and Navigational Equipment	9
Electrical System	9
Pump Room	10
Engine Room / Mechanical Equipment	10
Updates	10

Remarks	11
Exclusions	11
Disclaimer	11
PHOTOS	12
CONTACTS	19
Contact details	19
Telephones	19
Office hours	19
Address	19

SPECIFICATIONS

Overview

Basic Information

Category: Sport Fisherman

Sub Category: Convertible

Model Year: 1993

Year Built: 1993

Country: Mexico

Vessel Top: Hardtop

Fly Bridge: Yes

Cockpit: Yes

Dimensions

LOA: 65' 0" (19.81m)

Beam: 18' 0" (5.49m)

Max Draft: 5' 6" (1.68m)

Speed, Capacities and Weight

Cruise Speed: 25 Kts. (29 MPH)

Max Speed: 35 Kts. (40 MPH)

Gross Tonnage: 74 Pounds

Water Capacity: 200 Gallons

Holding Tank: 40 Gallons

Fuel Capacity: 1900 Gallons

Fuel Consumption: 85 Gallons

Accommodations

Total Cabins: 4

Total Heads: 3

Hull and Deck Information

Hull Material: Cold Molded

Engine Information

Engines: 2

Manufacturer: Caterpillar

Model: 3412

Engine Type: Inboard

Fuel Type: Diesel

DETAILED INFORMATION

Salon

- L-Shape Sofa Portside with Storage
- Flatscreen TV with Surround Sound Amplifier and Speakers - New 2013
- Sony CD / DVD Player
- Forward Portside Dinette with Storage

Galley

The U-shaped galley is on the salon level with all the amenities.

- Microwave / Convection Oven New 2009
- Full Size Oven and Range - New 2009
- Under Counter Custom Made Refrigerators & Freezers
- Kenmore Sink Garbage Disposal
- U-Line Ice maker
- (2) Bar Stools at Counter
- Parquet Wood Floor
- Rollout Pantry
- Access Hatch to Pump Room

Companionway

- Carpeted Sole
- Electrical Distribution Panel with Battery Selector Switch
- 3-Steps to Galley with Storage and Central Vacuum Cleaner Outlet
- Custom Alcove with Rod Storage
- Rod Storage, Port Outboard, with Lighting

Master Stateroom

- Custom Queen Berth with (2) Access Hatches, (2) Drawers and Mirror at Aft Bulkhead
- Built-In Night Stands with (3) Drawers
- Built-In Storage with (5) Drawers
- Cedar-Lined Hanging Locker with Overhead Light
- (2) Overhead Lights
- (5) Recessed Lights
- Carpeted Sole
- Access Hatch to Bilge Area

- Air Conditioning Control
- Vanity, Forward Starboard, with Lid and Mirror, Benchseat Swing Out

Master Stateroom Head

- Entrance Via Master Stateroom
- Oak Plank Sole
- Galley Maid Head
- Molded Countertop with Recessed Storage
- Sink
- Mirrored Door to Medicine Locker
- Shower Stall with Custom Plexiglass Door
- Mounted Showerhead
- Delta Hot / Cold Faucet

Starboard Bow Stateroom

- Upper and Lower Bunks with Storage in Upper Platform and (2) Drawers in Lower Bunk
- Reading Light at Each Bunk
- Matching Bedspreads and Pillow Shams
- Cedar-Lined Hanging Locker with Light and Access Hatch to Bilge
- Indirect Lighting at Base of Lower Bunk
- Overhead Light
- Marine Air A/C Control and Fan Switch in Hanging Locker
- Carpeted Sole
- Porthole

Port Bow Stateroom

- Upper and Lower Bunks with Storage in Upper Platform and (2) Drawers in Lower Bunk
- Reading Light at Each Bunk
- Matching Bedspreads and Pillow Shams
- Cedar-Lined Hanging Locker with Light and Access Hatch to Bilge
- Indirect Lighting at Base of Lower Bunk
- Overhead Light
- A/C Control and Fan Switch in Hanging Locker
- Carpeted Sole
- Porthole

Bow Head

- Entrance Via Port and Starboard Forward Staterooms
- Oak Parquet Sole
- Overhead Hatch with Sliding Screen and Sliding Blackout Cover Board
- Royal Flush Head
- Vanity with Molded Counter, Sink, Backsplash
- Mirrored Door to Medicine Locker
- Mirrored Panels Above Vanity
- Storage Locker
- Shower Stall with Custom Plexiglass Door, Port and Starboard Bench Seat, Molded Shelf, Port and Starboard Locker, Mounted Showerhead, Delta Hot / Cold Water Faucet

Starboard Aft Stateroom

- Upper and Lower Bunks with Storage with (2) Drawers in Lower Bunk
- Matching Bedspreads and Pillow Shams
- Cedar-Lined Hanging Locker with Light
- (2) Bulkhead-Mounted Reading Lights
- Overhead Light
- A/C Control Panel
- Carpeted Sole
- Central Vacuum Hose in Hanging Locker

Starboard Head

- Entrance Via Companionway and Starboard Aft Stateroom
- Oak Plank Sole
- Galley Maid Head
- Vanity with Molded Counter and Sink
- American Standard Hot / Cold Faucet
- Mirrored Panels
- Mirrored Door to Medicine Locker
- Shower Stall with Custom Plexiglass Door, Overhead Light, Mounted Showerhead, Delta Hot / Cold Faucet

Cockpit

- Teak Covering Boards
- Teak Deck
- Freshwater and Saltwater Washdowns
- Cockpit Fridge and Freezer
- Eskimo Ice Chipper

- (2) 50 Amp Cablemaster Retracting Cords

Fishing Equipment

- Cockpit Live Baitwell
- Release Fighting Chair and Rocket Launcher - New 2009
- Rupp Triple Spreader Outriggers - New 2009
- Cockpit Tackle Storage
- Refrigerated Fishbox with Macerator

Flybridge

- L-Shaped Seating, Starboard, Forward of Console
- Port Side Bench Seating
- Drink Cooler, Starboard
- (2) Teak Helm Chairs

Electronics and Navigational Equipment

- New Single Lever Electronic Controls
- Garmin Touchscreen GPS & Radar - New 2009
- Secondary Garmin GPS - New 2009
- AIS Vessel ID Interfaced with GPS
- FLIR Camera Interfaced with GPS
- SAT Phone
- Simrad Autopilot
- Furuno 1100 Video Sounder - New 2012
- (2) Icom VHF
- Furuno Radar
- Secondary Garmin Radar - New 2013

Electrical System

- (2) 25 kW Phasor Gensets
- Battery Chargers (1) 100 Amp & (1) 60 Amp
- Fans and Blowers
- 12 Volt Gel Cell Battery
- (2) Acme Transformers
- Crown Battery Charger

Pump Room

- FCI Watermaker
- 12 Volt Freshwater Pump
- 110 Volt Teel Water Pump with Accumulator Tank
- (3) A/C Compressors
- Compressor for Cockpit Freezer and Fishbox
- Stainless Hot Water Heater
- A/C Raw Water Pump
- Fuel Tank Sight Glasses
- Galley Maid Head Pumps

Engine Room / Mechanical Equipment

- 2x3412 CATs
- Crash Pumps Off Each Engine
- Fuel Tank Sight Glasses
- Hydraulic Steering Reservoir
- Engine Start / Stop Switches
- Engine Gauges
- Fuel Priming Pumps, Electrical / Manual
- Halon Automatic Fire Fighting System, 20lbs
- Dripless Shaft Logs
- Racor Fuel Filters, (2) For Each Engine
- Oil Changing System with Manifold
- Lube Oil Tank
- Glendinning Controls - 2009
- Engine Room Cameras Interfaced with Garmin Units
- Flow Scan Fuel Monitor - 2013

Updates

2005: New Paint and Teak Cockpit Engine Overhauls New Exhaust Risers and Mufflers New Racor Manifolds New Air Conditioning System New Head Hunter Head System Throughout

2008: (2) 25 kW Phasor Generators **2009:** Touchscreen Garmin Unit Secondary Garmin Unit AIS Vessel ID System Engine Room Cameras Interfaced with Garmin Electronic System FLIR Camera Interfaced with Garmin Electronic System SAT Phone Underwater Lights Oven & Stove Rupp Outriggers Glendinning Controls Simrad Autopilot Hardtop with Molded-In Spreader Lights and Piping Refurbish Interior **2013:** Flow Scan Fuel Monitor Salon GPS Monitor Salon Flat Screen TV Surround Sound Stereo System Garmin Radar

Remarks

"Gandy Dancer" is a beautiful 65 foot custom pedigree sportfish with a fantastic layout, offering 4 staterooms and 3 heads. She was built with traveling and fishability in mind. She holds 1900 gallons of fuel and offers a huge cockpit with an oversize fish box, water maker, and Eskimo ice machine. With ultra dependable 3412 Cat power, you have a tremendous fishing platform with the ability to go anywhere and do anything.

Exclusions

Owner's personal belongings.

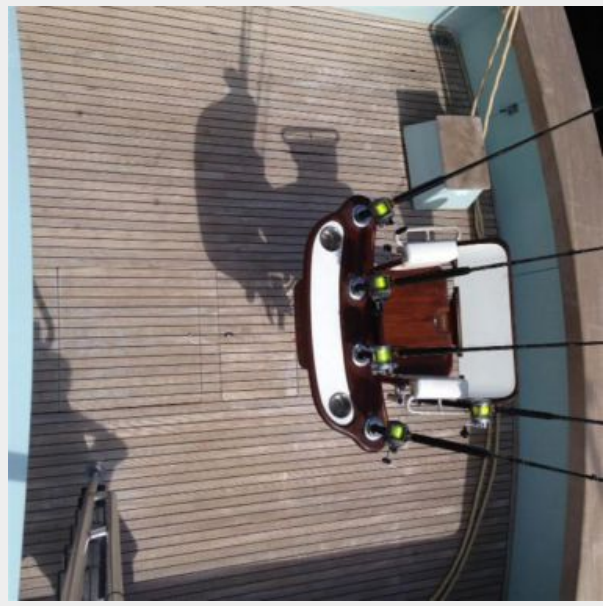
Disclaimer

The Company offers the details of this vessel or yacht in good faith but cannot guarantee or warrant the accuracy of this information nor warrant the condition of the vessel. A buyer should instruct his representatives, agents, or his surveyors, to investigate such details as the buyer desires validated. This vessel or yacht is offered subject to prior sale, price change, or withdrawal without notice.

PHOTOS

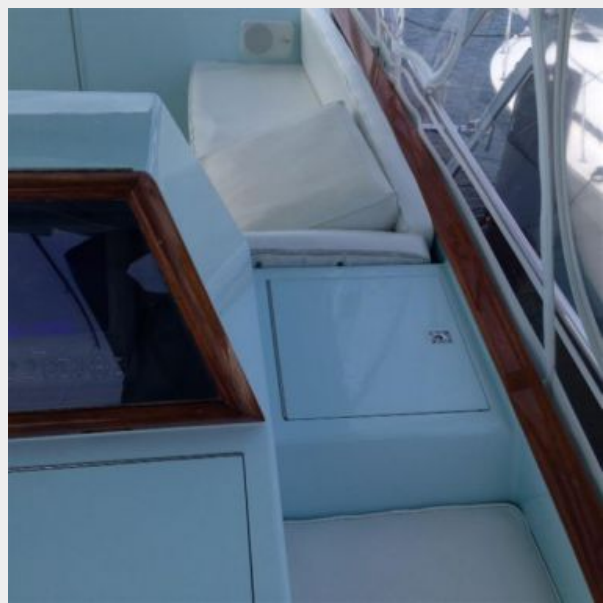














CONTACTS

Andrey Shestakov, leading yacht broker of the sales department of Shestakov Yacht Sales Inc. Shestakov Yacht Sales Inc., the official representative of the Miami/Fort Lauderdale FL headquarters.

Contact details

Email: andrey@shestakovyachtsales.com

Web: shestakovyachtsales.com/en/

Telephones

USA: +1(954)274-4435

Office hours

Monday – Saturday: **9:00 - 21:00** EDT

Sunday: **closed**

Address



Harbour Towne Marina, 850 NE 3rd St,
STE 213, Dania, FL 33004