

YANKEE PEDDLER — EASTBAY



Builder: EASTBAY

Year Built: 2001

Model: Trawler

Price: PRICE ON APPLICATION

Location: United States

LOA: 38' 0" (11.58m)

Beam: 13' 4" (4.06m)

Min Draft: 3' 11" (1.19m)

Our experienced yacht broker, Andrey Shestakov, will help you choose and buy a yacht that best suits your needs **YANKEE PEDDLER — EASTBAY** from our catalogue. Presently, at Shestakov Yacht Sales Inc., we have a wide variety of yachts available on our sale's list. We also work in close contact with all the big yacht manufacturers from all over the world.

If you would like to buy a yacht **YANKEE PEDDLER — EASTBAY** or would like help answering any questions concerning purchasing, selling or chartering a yacht, please call **+1(954)274-4435**

TABLE OF CONTENTS

TABLE OF CONTENTS	2
SPECIFICATIONS	5
Overview	5
Basic Information	5
Dimensions	5
Speed, Capacities and Weight	5
Accommodations	5
Hull and Deck Information	6
Engine Information	6
DETAILED INFORMATION	7
Accommodations	7
Mechanical	7
Equipment	8
Electrical Equipment	9
Head	9
Galley	9
Electronics	10
Construction	10
Excluded Personal Equipment	11
On Deck	11
Exclusions	11
Disclaimer	12
PHOTOS	13
NAME BOARDS	13
BOW VIEW	13
STERN VIEW	13
PORT QUARTER VIEW	13
TNT PLATFORM UP	13

TNT PLATFORM DOWN	13
EXTENDED CABIN TOP	14
BOTTOM SOUNDER	14
HELM LEFT SIDE	14
HELM RIGHT SIDE	14
ENGINE INSTRUMENTS	14
V-BERTH	14
FORWARD CABIN DOOR	15
V-BERTH	15
FORWARD CABIN DRAWERS	15
ELECTRIC PANEL	15
STEREO	16
DINETTE	16
GALLEY	16
GALLEY LOCKERS	16
GALLEY	16
HEAD	16
COMPLETE ORGANIZED MANUALS	17
VIEW LOOKING FORWARD	17
CUSTOM WHEEL AND STIDD CHAIR	17
CHART DESK	17
PORT SIDE OF HELM DECK	17
STARBOARD VIEW OF HELM DECK	17
COCKPIT	18
LOOKING FORWARD FROM COCKPIT	18
COCKPIT SEAT	18
FORE DECK	18
FORWARD CABIN TOP	18
STURDY HANDRAILS	18

WINDSHIELDS/WIPERS AND WASHERS	19
CABIN TOP EQUIPMENT	19
CONTACTS	20
Contact details	20
Telephones	20
Office hours	20
Address	20

SPECIFICATIONS

Overview

YANKEE PEDDLER is an extremely well equipped and maintained Eastbay 38 with a custom extended hardtop deck house done to a high standard. The bridge deck area is air conditioned and laid out in a manner to provide comfortable lounging and dining space. The boat has been kept in a covered slip while in Florida. Review the listing to find such items as a TNT lift for the dinghy, Avon RIB dinghy. This would be the perfect vessel for a couple to do the loop cruise with ease and comfort.

Basic Information

Category: Trawler

Model Year: 2001

Year Built: 2001

Country: United States

Dimensions

LOA: 38' 0" (11.58m)

Beam: 13' 4" (4.06m)

Min Draft: 3' 11" (1.19m)

Speed, Capacities and Weight

Displacement: 26000 Pounds

Water Capacity: 95 Gallons

Holding Tank: 30 Gallons

Fuel Capacity: 344 Gallons

Accommodations

Total Cabins: 1

Total Heads: 1

Hull and Deck Information

Hull Material: Fiberglass

Hull Finish: Aluminum

Engine Information

Engines: 2

Manufacturer: Caterpillar

Model: 3208

Engine Type: Inboard

Fuel Type: Diesel

DETAILED INFORMATION

Accommodations

The interior layout design is clean, stylish and tastefully done. The selection of premium quality materials, fixtures and components along with the joinery detail consistent with Grand Banks standards make this a yacht to be proud of. This EB 38 has more storage space than found on many larger vessels.

FORWARD CABIN A comfortable area to sleep and relax with a large v-berth that has a filler to make into a double. Abundant storage with 10 drawers, 7 lockers and 1 hanging locker. The teak hull liner, teak and holly sole and high grade woodworking give this area a warm feeling. Opening hatches, ports and electric lighting make this a bright airy cabin

HEAD Next aft to port is the head with cultured marble sink built in, opening port hole for light and air. The shower area encloses with a curtain. Very good storage for personal gear and linens, vent fan and a large mirror

GALLEY Next aft to port is the very large galley that would make any cook happy. Lots of storage, large refrigeration/freezer space, double sink and counter top area

DINETTE To starboard is the large comfortable U shaped sitting area with a table which when lowered allows it to become a double bunk. Here will be found the master electrical panel, lockers and book shelves. The sole is teak and holly in this area common with the galley. At the aft end are the 3 steps to the helm deck with storage located in each step

HELM DECK The helm deck is the result of blending the standard East bay features with a well done custom extended hard top. This area can be open to the aft cockpit or, with the back canvas lowered a fully air conditioned living space. The helm with full electronics and Stidd helm chair is to starboard. To port there is a large L shaped sitting area with folding table and glass topped chart locker with storage under. It has teak decking, sliding windows, overhead hatches and electrically opening center window forward making it airy and utilitarian when not air conditioned. Full length teak handrail overhead and custom teak steering wheel complete the area.

COCKPIT Step down is the large teak cockpit area with seating and 3 hatches to the under deck storage areas. A transom door gives easy access to the swim platform. The seating area is covered by the extended hardtop

Mechanical

- Anti-vibration shaft coupling
- Hydraulic 2:1 Reduction gear
- Dripless shaft logs with back up seals

- Fully insulated engine room for noise
- Spurs line cutters on shafts
- High output engine room fans
- Electric oil change pump plumbed to engines and genset
- Exalto wipers with fresh water rinse at all three forward windshields
- Deck hatch locking system
- Remote temperature monitors for engine room,
- Racor filters
- Sight glass on fuel tank and gauges for fuel and water
- Hynautic steering
- Vacuum gauges on Racor fuel filters
- Drain valve on Racor fuel filters
- Fresh water filter in galley
- 4 bladed Nybril propellers scanned to class A
- Shafts, 2" Stainless Steel Aquamet 22
- Owner has very good maintenance records and past years oil samples

Equipment

- Sun covers for all windows
- Toe rail covers
- Name board covers
- Aft cockpit cover
- Two 16,000 BTU Air Conditioner with condensation lines drained overboard, not into the bilge
- TNT Dinghy lift with wireless and wired remotes, new rams and new stainless mesh covered hydraulic lines
- Chocks for the dinghy
- Avon RIB dinghy with full cover
- 8 HP Yamaha outboard
- Horseshoe life ring
- 2 Life jackets
- Boat hook
- 2 Fenders
- Maxwell Windless with controls on fore deck and at helm
- Electric windshield opener
- Stidd helm chair
- U line ice maker
- 35 lb CQR anchor with 225 ft of high tensile 5/16" chain
- Bennett trim tabs
- Air horn
- Flares
- 4 fire extinguishers
- Search light on cabin top with wireless remote

- Antennas and some navigation lights mounted on mast
- 11 gal Stainless hot water tank
- Pressure water pump with accumulator tank
- 3 Rule 1500 Bilge pumps with auto/manual switching
- Engine room ventilator

Electrical Equipment

- 3000 Watt inverter with 100 amp charge
- Pro Mariner 50 amp charger
- Valance recessed lighting on helm deck
- AGM maintenance free batteries
- Onan starting battery Diehard group 24
- 8D AGM battery for Starboard engine starting and house bank
- 2 Group 31 AGM batteries (2) on port engine
- Engine room lights low amp Xenon
- AC and DC outlets on helm deck
- Bonding system
- Galvanic isolator
- Electric panel with breakers and full monitoring of systems
- 50 amp shore power with a 75' 50 amp shore power cord
- Indicator light for engine room blower below helm
- Victron BMV 600 Battery Monitor on Bank #2 (house/inverter)
- 8 KW Onan Generator 737.1 Hrs
- Bilge Alarm

Head

- Purasan waste treatment system connected to VacuFlush toilet
- Deck pump out, macerator and Y valve
- Holding tank 30 gal
- Sump with auto pump for shower drain
- Separate shower stall
- Stainless steel towel racks

Galley

- U shaped with large working area on counter top
- Twin Stainless Steel sinks
- Separate spigot for filtered water
- Abundant storage areas in lockers and drawers

- Microwave
- Large top loading ice box and large under the counter freezer, with holding plates
- Wireless thermometers for refrigerator and freezer
- Three burner LPG stove with oven, Seaward solenoid control and two aluminum propane tanks in a vapor proof locker
- Exhaust fan at stove
- Port hole with drapes on stainless steel rods
- Corian counter tops
- Pressure fresh water system

Electronics

- HP w17e computer/plotter display screen
- Dell Navigation PC
- Raytheon ST 60 Tridata
- Furuno GPS/WAAS Navigator
- Raytheon Radar RL70C Pathfinder
- Robertson AP20 Autopilot
- Horizon Spectrum VHF with hailer
- Furuno FCV-582L Fish Finder/Bottom Sounder
- VICTrono energy battery monitor
- Danforth White Express compass
- Exhaust temperature indicators at helm
- KVH Satellite TV
- External Cell Antenna
- Nobeltec PC based electronic charting

Construction

- Deep V Hull
- Diamond Sea Glaze sliding windows in saloon
- The hard top is insulated
- Stainless steel ports,, highly polished in lower cabin sides
- Extended cabin top over aft deck
- Teak deck in cockpit
- Solid glass bottom
- Divinycell coring above the waterline
- Stainless steel hand rails
- Lewmar deck hatches
- Bronze thru hulls
- Bronze rudder stock
- Bronze struts

- Transom door

Excluded Personal Equipment

- Name "YANKEE PEDDLER" reserved
- Binoculars
- EPIRB
- Tools
- Spare parts not specific to the vessel
- Flashlights & portable lights
- Anchors and anchor lines not connected to the windless
- Cleaning supplies
- CD's
- Folding deck chairs
- Charts and guide books
- Navigation instruments
- Clothes, jackets, towels, first aid supplies, toiletries
- Vacuum sweeper
- Portable heater
- Dingy ice chest
- 12 VDC utility water pump

On Deck

- Wide side decks
- Steps for ease of getting to the side decks from the cockpit
- port and starboard anchor lockers forward
- Heavy stainless steel anchor roller
- 5 Lewmar deck hatches
- Double spring line cleats on each side
- Heavy duty pulpit and rails properly supported
- Stainless steel rope chocks
- Below deck cleats port and starboard for stern lines
- Stern light elevated for vision when dinghy mounted on the platform
- Stainless steel handrails on cabin tops
- Ladder mounted on forward cabin top for ease in getting to upper cabin top

Exclusions

Owner's personal belongings.

Disclaimer

The Company offers the details of this vessel or yacht in good faith but cannot guarantee or warrant the accuracy of this information nor warrant the condition of the vessel. A buyer should instruct his representatives, agents, or his surveyors, to investigate such details as the buyer desires validated. This vessel or yacht is offered subject to prior sale, price change, or withdrawal without notice.

PHOTOS

NAME BOARDS



BOW VIEW



STERN VIEW



PORT QUARTER VIEW



TNT PLATFORM UP



TNT PLATFORM DOWN



EXTENDED CABIN TOP



BOTTOM SOUNDER



HELM LEFT SIDE



HELM RIGHT SIDE



ENGINE INSTRUMENTS



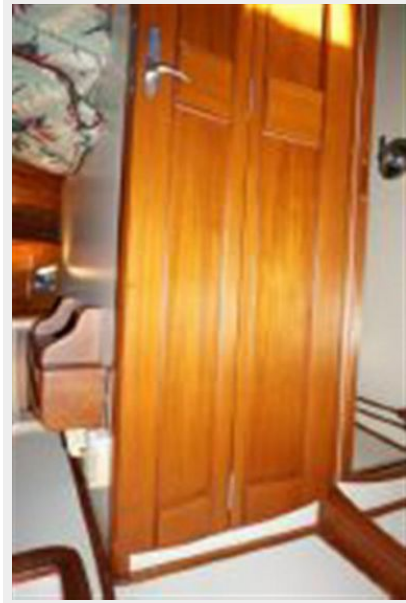
V-BERTH



V-BERTH



FORWARD CABIN DOOR



FORWARD CABIN DRAWERS



ELECTRIC PANEL



STEREO



DINETTE



GALLEY



GALLEY LOCKERS



GALLEY



HEAD



COMPLETE ORGANIZED MANUALS



VIEW LOOKING FORWARD



CUSTOM WHEEL AND STIDD CHAIR



CHART DESK



PORT SIDE OF HELM DECK



STARBOARD VIEW OF HELM DECK



COCKPIT



LOOKING FORWARD FROM COCKPIT



COCKPIT SEAT



FORE DECK



FORWARD CABIN TOP



STURDY HANDRAILS



WINDSHIELDS/WIPERS AND WASHERS



CABIN TOP EQUIPMENT



CONTACTS

Andrey Shestakov, leading yacht broker of the sales department of Shestakov Yacht Sales Inc. Shestakov Yacht Sales Inc., the official representative of the Miami/Fort Lauderdale FL headquarters.

Contact details

Email: andrey@shestakovyachtsales.com

Web: shestakovyachtsales.com/en/

Telephones

USA: +1(954)274-4435

Office hours

Monday – Saturday: **9:00 - 21:00** EDT

Sunday: **closed**

Address



Harbour Towne Marina, 850 NE 3rd St,
STE 213, Dania, FL 33004