

NO NAME — SUNSEEKER



Builder: SUNSEEKER

Year Built: 2001

Model: Motor Yacht

Price: PRICE ON APPLICATION

Location: United States

LOA: 44' 0" (13.41m)

Beam: 13' 9" (4.19m)

Max Draft: 3' 1" (0.94m)

Cruise Speed: 1 Kts. (1 MPH)

Max Speed: 40 Kts. (46 MPH)

Our experienced yacht broker, Andrey Shestakov, will help you choose and buy a yacht that best suits your needs **No Name — SUNSEEKER** from our catalogue. Presently, at Shestakov Yacht Sales Inc., we have a wide variety of yachts available on our sale's list. We also work in close contact with all the big yacht manufacturers from all over the world.

If you would like to buy a yacht **No Name — SUNSEEKER** or would like help answering any questions concerning purchasing, selling or chartering a yacht, please call **+1(954)274-4435**

TABLE OF CONTENTS

| | |
|----------------------------------|----|
| TABLE OF CONTENTS | 2 |
| SPECIFICATIONS | 3 |
| Overview | 3 |
| Basic Information | 3 |
| Dimensions | 3 |
| Speed, Capacities and Weight | 3 |
| Accommodations | 3 |
| Hull and Deck Information | 3 |
| Engine Information | 4 |
| DETAILED INFORMATION | 5 |
| Manufacture Provided Description | 5 |
| Upgrades | 5 |
| Hull | 5 |
| Standard Equipment | 6 |
| Helm | 7 |
| Salon | 8 |
| Head | 9 |
| Stateroom 2 | 9 |
| Mechanical | 10 |
| Exclusions | 11 |
| Disclaimer | 11 |
| PHOTOS | 12 |
| CONTACTS | 18 |
| Contact details | 18 |
| Telephones | 18 |
| Office hours | 18 |
| Address | 18 |

SPECIFICATIONS

Overview

Fresh Water Sunseeker with 3208 CATs! Yes she is extremely clean with many recent upgrades: Hull sides painted in 2011, New Electronics-Furuno NavNet 3D, New flat screens TVs, new upholstery, New canvas, and many more upgrades...

Basic Information

Category: Motor Yacht

Model Year: 2001

Year Built: 2001

Country: United States

Dimensions

LOA: 44' 0" (13.41m)

Beam: 13' 9" (4.19m)

Max Draft: 3' 1" (0.94m)

Clearance: 9' 10" (3.00m)

Speed, Capacities and Weight

Cruise Speed: 1 Kts. (1 MPH)

Max Speed: 40 Kts. (46 MPH)

Displacement: 29000 Pounds

Water Capacity: 79 Gallons

Fuel Capacity: 280 Gallons

Accommodations

Total Berths: 6

Hull and Deck Information

Hull Material: Fiberglass

Engine Information

Engines: 2

Manufacturer: Caterpillar

Model: 3208

Engine Type: Inboard

Fuel Type: Diesel

DETAILED INFORMATION

Manufacture Provided Description

The particularly sociable Sunseeker Camargue 44 has a wide cruising range and can take a boating party at high speed wherever they want to go. Offering good maneuverability and a stable performance, she provides comfortable accommodation and a spacious deck layout, which includes a full-size sunlounger as well as cockpit seating for eight around a folding dining table. Three people can also join the pilot in the large helm station. With a wet bar and fridge, a swim shower and a bathing platform, this elegant cruiser offers everything needed for daytime fun and nighttime comfort. The spacious saloon has deeply upholstered seating around a folding dining table, and is decorated with a choice of attractive lacquered interior finishes and veneers. There's a surprisingly large and well-equipped galley. For nights away, or for a little extra privacy, the Camargue 44 can provide full cruising comforts for six. There's a large en suite master stateroom forward and an en suite twin-berth cabin aft, and the saloon can also readily convert into a further double berth.

Upgrades

- New Furuno NavNet 3d (2) screens
- New Furuno Radar
- New Furuno Depth Sounder
- New JL Audio Speakers
- New Flat Scr
- Hull sides painted
- een TVs
- New Canvas
- New Cushions
- New Teak Deck

Hull

Sunseeker Camargue 44 Specifications - Standard Equipment Construction -

Hand-laid GRP -

Isophthalic gelcoat -

Molded stripes and coachwork lines -

Initial lay-up: Isophthalic resin, powder-bound fiberglass mat -

Main lay-up: Orthophthalic resin with stitched biaxial and unidirectional fiberglass reinforcement -

25 mm Balsa core to topsides -

Bonded foam frame and girder system reinforcing hull bottom Deck -

Molded non-slip deck finish -

Standard Equipment

Fittings all in stainless steel -

Pulpit and cockpit rails -

Stainless steel fendering with rubber insert -

8 Stainless steel cleats -

Curved stainless steel framed windscreen -

Electric anchor winch and capstan with deck and cockpit controls -

Stainless steel bow roller with anchor stop -

Delta anchor and 30 m chain (galvanized) -

Chain locker with fender storage -

Stowage position for optional wetbike -

tender crane -

IMCO Navigation lights -

Fuel filler -

Freshwater filler -

Fold-away swimming ladder -

Teak-laid bathing platform and steps -

Hot and cold swimming shower -

Ensign staff and socket -

6 Fenders and 2 mooring lines Cockpit -

Self-draining -

Safety door -

Full wetbar with hot and cold water, fridge 12V, glass and bottle storage -

Dinette seating for up to 8 - Fold-out table - Storage beneath seating -

Folding helm seat - Curved copilot seating area - Chart table -

Full-size sunbather - Large storage locker under sunbather -

Glass holders -

Overhead cockpit lights 12V -

Waterproof carpet Helm Console -

lights 12V -

Hanging wardrobe -

Overhead halogen lighting -

2 x Opening portholes with mosquito screen and curtains -

Deck hatch -

Helm

Contoured console with burr walnut fascia -

Radar -Furuno NavNet 3d New

GPS -Furuno NavNet 3d New (dual screens)

Autopilot -

VHF Radio -

Wood rimmed steering wheel -

Single-lever controls -

Full analog engine instrumentation -

Electronic speedlog -

Depth sounder - Furuno NavNet 3D New

Fuel gauge -

Freshwater gauge -

Compass - Horn - Trim tab controls - 2 Windscreen wipers and washers -

Fire extinguisher - Glass holders Covers -

Full camper -

suntop -

Cockpit cover Main Cabin -

Salon

Saloon - Large dinette with telescopic table - **New Flatscreen Television** -

Alpine radio - CD - Speakers in cabin and cockpit -

Stowage beneath seats - Scatter cushions -

Drinks cupboard -

Overhead halogen lights 12V -

Opening portholes with mosquito screens and curtains -

Deck hatch -

Main switch and circuit breaker panel (AC-DC) -

Double 240V AC socket -

Fitted carpet Galley -

Electric refrigerator 12V -

Electric twin hob 240V -

Microwave - grill 240V -

Hot and cold water -

6 Place crockery set, 6 place cutlery set - Crockery stowage - Cupboard storage -

Opening porthole with mosquito screen and curtain -

Double 240V socket -

Hand-held fire extinguisher - First aid kit - Rubbish bin Master Stateroom - Double bed - Storage beneath - Drawers in bed end - 2 Reading

Head

shower -

Double 240V AC socket -

Fitted carpet Master En Suite Shower Room -

Avonite countertop - Washbasin -

Taps and accessories -

Hot and cold water -

Vanity unit - Mirror -

Toothbrush and glass holder -

Soap dish - Towel ring -

Stowage cupboard - Vacuum toilet -

Separate shower compartment -

Acrylic shower door -

Teak grating -

Overhead lights -

Opening porthole with mosquito screen and curtain - Shaver socket 240 - 110V Aft Cabin -

Stateroom 2

Two single berths -

Under-berth storage and drawers -

Hanging wardrobe - Storage cupboard -

Overhead halogen lighting - 2 Reading lights -

Opening porthole with mosquito screen -

Double 240V AC socket -

Fitted carpet En Suite Toilet Compartment -Washbasin - Taps and accessories - Hot and cold water - Mirrored vanity unit - Toothbrush and glass holder - Soap dish - Towel ring - Shower - Overhead lights - Vacuum toilet - Opening porthole with mosquito screen and curtain Engine Compartment and Ancillaries

Mechanical

Twin CAT 3208 engines with close coupled V-drive gearbox -

Sound insulation throughout engine room -

2 x Aluminum fuel tanks with electric senders -

Automatic fire extinguishers -

2 x Automatic bilge pumps -

Separate fuel filters -

water separators -

Extractor fans -

Aluminum freshwater tank with electric sender -

12V freshwater pressure system -

Hot water tank Electrical System -

Generator 4 kW, 50 Hz upgrade required for air conditioning -

AC 240V Dockside connection with 20 m cable -

Galvanic isolator - 12V DC Electrical system with full circuit breaker protection -

4 x Engine batteries 12V circuit - 2 x Domestic batteries 12V circuit - 1 x Generator battery 12V circuit - Alternator split charging system -

Battery switches controlled from locker in cockpit -

40 amp Battery charger for 12V circuits -

Water heater 1.5 kW 240V AC -

240V AC sockets throughout the boat Underwater Gear -

Direct shaft drive through half tunnels -

4-blade NAB bronze propellers -

Bronze P-brackets -

2 x 1 3-4" Stainless steel Temet 25 shafts -

Dripless shaft logs with spare seals -

High-performance bronze rudders and struts -

Sea water strainers x 2 main engines,

1 generator -

Seacocks on all underwater fittings -

Full cathodic bonding system to zinc anodes -

Stainless steel hydraulic trim tabs 12

Exclusions

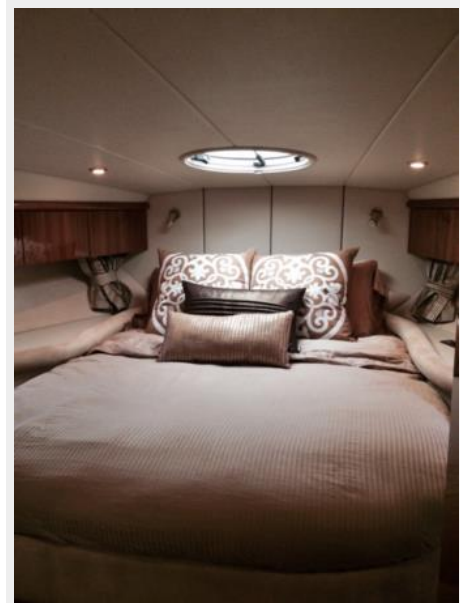
Owner's personal belongings.

Disclaimer

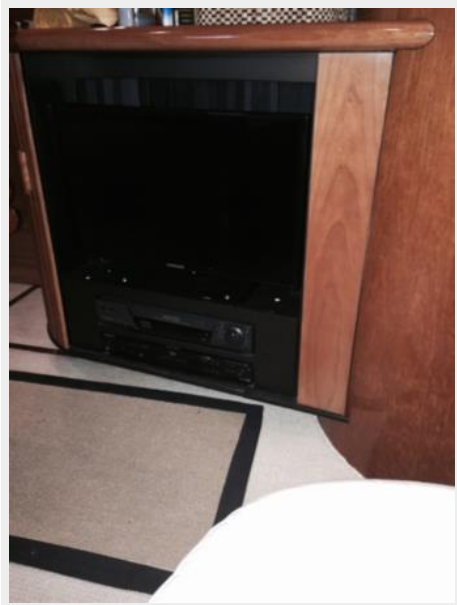
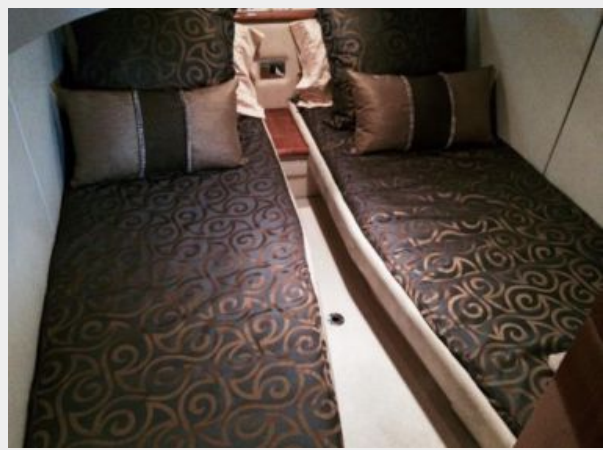
The Company offers the details of this vessel or yacht in good faith but cannot guarantee or warrant the accuracy of this information nor warrant the condition of the vessel. A buyer should instruct his representatives, agents, or his surveyors, to investigate such details as the buyer desires validated. This vessel or yacht is offered subject to prior sale, price change, or withdrawal without notice.

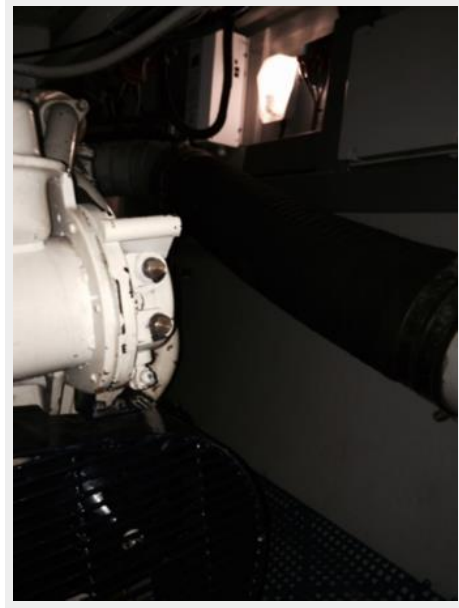
PHOTOS













CONTACTS

Andrey Shestakov, leading yacht broker of the sales department of Shestakov Yacht Sales Inc. Shestakov Yacht Sales Inc., the official representative of the Miami/Fort Lauderdale FL headquarters.

Contact details

Email: andrey@shestakovyachtsales.com

Web: shestakovyachtsales.com/en/

Telephones

USA: +1(954)274-4435

Office hours

Monday – Saturday: **9:00 - 21:00** EDT

Sunday: **closed**

Address



Harbour Towne Marina, 850 NE 3rd St,
STE 213, Dania, FL 33004