

W — PACIFIC MARINER



Судостроитель: PACIFIC MARINER

Год постройки: 2013

Модель: Моторная яхта

Цена: **ЦЕНА ЯХТЫ ПО ЗАПРОСУ**

Местонахождение: United States

Длина общая: 85' 0" (25.91m)

Ширина: 21' 3" (6.48m)

Макс. осадка: 5' 2" (1.57m)

Крейс. скорость: 22 Kts. (25 MPH)

Макс. скорость: 25 Kts. (29 MPH)

Купить **W — PACIFIC MARINER** а также выбрать подходящую вам яхту из нашего каталога яхт вам поможет опытный яхтенный брокер Андрей Шестаков. На сегодняшний день компания **Shestakov Yacht Sales Inc.** имеет большое количество яхт в собственном списке продаж, а также тесно сотрудничает со всеми крупными яхтенными производителями по всему миру.

Для того чтобы купить яхту **W — PACIFIC MARINER** а также проконсультироваться по любому вопросу связанному с покупкой, продажей, чартером яхт позвоните по телефону **+7(918)465-66-44**.

ОГЛАВЛЕНИЕ

ОГЛАВЛЕНИЕ	2
ХАРАКТЕРИСТИКИ	5
Обзор	5
Основная информация	5
Размеры	5
Скорость, вместимость и масса	5
Размещение	5
Корпус и палуба	6
Информация о двигателе	6
ПОДРОБНОЕ ОПИСАНИЕ	7
Accommodations	7
Aft Deck	7
Salon	7
Dining	8
Galley	8
Dinette	8
Day Head	8
Pilothouse	9
Master Stateroom	9
Master Head	10
Master Foyer	10
VIP Stateroom	10
VIP Head	11
Guest Stateroom / Port	11
Guest Head / Port	11
Guest Stateroom / Starboard	11
Guest Head / Starboard	12
Captains Quarters	12

Crew Quarters	12
Captain / Crew Head	13
Electrical	13
Flybridge / Boat Deck	13
Fore Deck	14
Side Decks & Rails	14
Communications	15
Audio / Video Electronics	15
Interior / General	15
Vessel Alarms and Monitoring	16
Mooring and Anchoring	16
Systems	16
Stabilizers	18
Safety Equipment	18
Main Engines / Drive Line	18
Engine Room	18
Swim Step	19
Remarks	19
Exclusions	19
Исключения	19
Отказ от ответственности	19
ФОТОГРАФИИ	20
Transom	20
Aft Deck	20
Aft Deck	20
Salon	20
Formal Dining	20
Salon / Bar	20
Formal Dining	21

Dinette	21
Pilothouse	21
Master Stateroom	21
Master Head	21
VIP Stateroom / Starboard	21
VIP Stateroom / Forward	22
Guest Stateroom / Port	22
Guest Stateroom / Port	22
Guest Head	22
Upper Helm	22
Electronics	22
Bow / Sun Pad	23
Upper Deck / Toys	23
Engine Room	23
Engine Room	23
Aft View	23
КОНТАКТЫ	24
Контактная информация	24
Телефоны	24
Время работы	24
Адрес	24

ХАРАКТЕРИСТИКИ

Обзор

"W" is a one-owner yacht built by an experienced owner and his full-time captain. She features At-Rest Stabilization by Naiad.

Основная информация

Тип судна: Моторная яхта

Подкатегория: Pilothouse

Модельный год: 2014

Год постройки: 2013

Страна: United States

Открытая палуба мостика: Да

Размеры

Длина общая: 85' 0" (25.91m)

Ширина: 21' 3" (6.48m)

Макс. осадка: 5' 2" (1.57m)

Скорость, вместимость и масса

Крейс. скорость: 22 Kts. (25 MPH)

Макс. скорость: 25 Kts. (29 MPH)

Водоизмещение: 160000 Pounds

Вместимость воды: 425 Gallons

Вместимость сточного бака: 360 Gallons Объем топливного бака: 2680 Gallons

Размещение

Всего кают: 4

Всего ком. состава: 5

Каюта капитана: Да

Спальных мест экипажа: 3

Комм. состав экипажа: 1

Корпус и палуба

Материал корпуса: Fiberglass

Материал палубы: Teak

Комплектация корпуса: Semi-Displacement

Дизайнер корпуса: William Garden

Дизайнер экстерьера: Westport

Дизайнер интерьера: Westport

Информация о двигателе

Двигатели: 2

Производитель: MTU

Модель: 10V2000

Тип двигателя: Inboard

Тип топлива: Diesel

ПОДРОБНОЕ ОПИСАНИЕ

Accommodations

"W" will accommodate up to eight owners/guests in four staterooms + crew.

Aft Deck

- TV 22" LCD
- Satellite Receiver
- (1) Pair of speakers
- Russound control panel
- Aft Deck Bar: Built-in fiberglass cabinet has Isotherm refrigerator drawer, Raritan icemaker, solid surface top, sink and storage locker
- Aft Deck Furniture: Includes molded-in settee with cushions, gloss finish Teak veneer dining table on stainless pedestals, and (3) arm chairs
- Teak Deck: Aft Deck swim step and bustle stairs are covered with teak
- Spiral Staircase: Molded fiberglass with Teak stair treads and stainless handrails to Flybridge
- Television: 22" LCD installed behind glass weather shield with satellite receiver
- Boarding Gates: Built-in port and starboard, with brackets for ladder
- Wing Station: (1) Station starboard includes engine control/stops and starts, steering and bow thruster controls

Salon

- TV 50" Plasma on remote controlled lift
- Surround Sound Receiver
- Surround Sound Speaker system with powered sub
- Satellite Receiver
- Blue Ray DVD Player
- Multi-Function RF Remote Control
- Russound distributed audio system
- Kaleidescape Cinema One System
- XM Radio
- AM/FM Receiver
- Russound touch screen control panel
- Salon Cabinetry: Raised buffet starboard side with television cabinet, wood veneer countertops with sea rail molding

- U-Line wine cooler
- U-Line icemaker
- Furniture: Custom sofa, two swiveling barrel chairs, coffee table, and built-in end table
- Headliner: Majilite headliner
- Blinds: Silhouette blinds in custom blind pocket. Vertiglide blinds on aft salon door
- Aft Door: Large 2-panel polished stainless steel sliding door, weather tight, and direct bonded glass
- Salon Bar: Includes Mahogany veneer cabinet, with granite stone counter, stainless sink, icemaker and wine cooler. Mirror polished stainless sink and chrome faucet

Dining

- Formal Dining: Custom satin finished Mahogany veneer dining table top with (6) wooden chairs
- Overhead Detail: Recessed Mahogany soffit with LED down lighting and rope lights
- Formal Dining Service Storage: Cabinet on forward bulkhead holds the provided formal china (12 place settings). Upper cabinets with glass doors hold the formal crystal, which includes 12 each: wine, lowball, highball and champagne glasses

Galley

- TV 22" LCD
- Satellite Receiver
- (2) Pair of speakers
- Russound control panel
- GE Profile refrigerator
- GE Range
- GE Convection/Microwave Vent Hood Kitchen Aid trash compactor
- Kitchen Aid dishwasher
- Galley Flooring: Amtico commercial vinyl flooring
- Countertops: Stone with edge detail

Dinette

- Settee
- Galley Flooring: Amtico commercial vinyl flooring
- Countertops: Stone with edge detail

Day Head

- Headhunter Royal Flush toilet
- Vanity with stone top

- Payson under-mount sink

Pilothouse

- Helm Station Wheel: Wood 36" Destroyer-type
- Engine Instrumentation: MTU
- Engine Controls: MTU Smart Line
- Helm Chair: (1) Stidd 500-XL Low Back helm chair
- Pilothouse Doors: Port and starboard, watertight
- Windshield: Mesh sun screen cover
- Windshield Wipers/Washers: Hepworth windshield wipers, self-parking, washers for three wipers
- Drawers: Chart drawers, adjacent to console
- Defrosters: Dometic 220 VAC defroster in Pilothouse console

Pilothouse Navigational Aids:

- Navigation System: Ships computer with MaxSea TZ (Time Zero Explorer), XM weather software. Furuno Navnet 3D black box chart plotter, radar and color sounder. (3) 19" LCD monitors at lower helm. (3) Furuno Navnet 3D MFD12 monitors on Flybridge
- Chart Plotters: MaxSea TZ Explorer interfaced with autopilot. Navnet 3D plotter with C Map charts, and radar overlay displays at any Navnet monitor, interfaced with autopilot
- Radar: Furuno black box Navnet MFDBB digital HD 72nm radar with dual range display and ARPA
- GPS: Furuno GP33 with display and Navnet Blackbox (BBWGPS)
- Digital Instruments: Furuno RD30 system displays wind speed/direction, depth and vessel speed on instruments in the Pilothouse, Flybridge, crew and Master Stateroom. Sensors include PB150 solid state weather sensor with GPS, Fluxgate Compass and Smart depth/speed transducer
- Compass: Ritchie Globe Master FB500 on Pilothouse and Flybridge
- Depth Sounder: Furuno Navnet DFF1 digital color sounder display on Navnet system
- Autopilot System: Simrad AP28 in Pilothouse and AP24 on flybridge

Master Stateroom

- TV 32" LCD
- Blue Ray Player
- Satellite Receiver
- Russound control panel (2) stateroom/head
- Speakers: (2) in stateroom, (2) in head
- Portlights: (4) Large opening with screens
- Counters: Veneer with satin finish
- Wardrobe: (2) Lined with aromatic cedar, automatic light and closet rod

- Blinds: Hunter Douglas Applause with black-out fabric
- Furniture: (2) Chairs
- Safe: Digital safe in wardrobe
- Berth: King berth with (4) built-in drawers and Mahogany headboard. Curved Mahogany soffit above with lighting
- Joinery: Soffit with trim for lighting and hidden air conditioning, crown molding, base molding, desk with bookshelf above, make-up mirror in port dresser, (2) nightstands with drawers and (2) Dressers

Master Head

- Toilet: Headhunter Royal Flush
- Shower: Stone tile wall, fiberglass pan and stainless grab handle. Euro-style frameless tempered glass door
- Sinks: (2) Payson sinks
- Mirrors: Mirrored medicine cabinet
- Headliner: Crown molding and Majilite trim
- Counters: Stone with edge detail
- Joinery: Vanity, crown molding, linen locker, soffits
- Portlight: (2) Opening with screens
- Lighting: Recessed LED room lights and vanity lights
- Flooring: Stone tile

Master Foyer

- Laundry: Full-size stacks washer/dryer. Joinery door with grill. Storage cabinet above
- Lighting: LED overhead lighting and rope lighting on stairs

VIP Stateroom

- Berth: Queen Berth with (4) built-in drawers and Mahogany headboard
- Wardrobe: Lined with aromatic cedar, automatic light, closet rod and cedar shelf
- TV 22" LCD
- Satellite Receiver
- DVD Player
- (1) Pair of speakers
- Russound control panel
- Counters: Mahogany veneer with satin finish
- Joinery: Shelves outboard of berth, AV cabinet, base molding and bookcase to starboard

VIP Head

- Toilet: Headhunter Royal Flush
- Shower: Molded fiberglass with built-in seat, stainless grab handle and tempered glass sliding door
- Lighting: Recessed LED lighting
- Counters: Stone with edge detail
- Mirror: Mirrored doors on medicine cabinet
- Joinery: Vanity, medicine cabinet and crown molding

Guest Stateroom / Port

- Berth: Twin berths, with nightstand between. The pedestals have two drawers built-in
- Lighting: Recessed LED room lights, indirect rope accent lighting under berth and above soffits
- Wardrobe: Lined with aromatic cedar, automatic light, closet door
- Counters: Wood veneer with satin finish
- TV 22" LCD
- Satellite Receiver
- DVD Player
- (1) Pair of speakers
- Russound control panel
- Blinds: Hunter Douglas Applause blind
- Portlights: Opening with screens
- Joinery: Soffit with trim for lighting, crown molding, base molding, (2) nightstands with drawers, curved corner cabinet with storage shelf and TV, A/V cabinet

Guest Head / Port

- Toilet: Headhunter Royal Flush
- Shower: Molded fiberglass with stainless grab
- Lighting: Recessed LED room lights
- Counters: Stone with bullnose edge
- Joinery: Vanity, crown molding, medicine cabinet
- Portlight: Opening with screen

Guest Stateroom / Starboard

- Berths: Queen Berth with four drawers built-in
- Lighting: Recessed LED room lights, (2) reading lights, indirect rope accent lighting under berth and above soffits

- Wardrobe: Aromatic cedar-lined, with automatic light and closet rod, door to luggage stowage compartment
- Counters: Wood veneer with satin finish
- TV 22" LCD
- Satellite Receiver
- DVD Player
- (1) Pair of speakers
- Russound control panel
- Blinds: Hunter Douglas Applause blind
- Portlights: Opening with screens
- Joinery: Soffit with trim for lighting, crown molding, base molding, (2) nightstands with drawers
- Curved corner cabinet with storage shelf and TV
- A/V Cabinet

Guest Head / Starboard

- Toilet: Headhunter Royal Flush
- Shower: The shower is molded fiberglass with stainless grab handle
- Mirror: Medicine cabinet has mirrored door
- Lighting: Recessed LED room light
- Flooring: Stone tile
- Counters: Stone with edge detail
- Joinery: Vanity, crown molding, medicine cabinet

Captains Quarters

- Berth: Captain is full-size modified queen
- TV 22" LCD
- Satellite Receiver
- DVD Player
- Lighting: 24VDC recessed room and reading lights
- Blinds: Hunter Douglas
- Counters: Solid surface with edge detail
- Joinery: Captain's berth with drawer storage under

Crew Quarters

- Berths: Crew is one berth with composite foam mattresses and storage below
- 19" LCD TV / DVD Combo
- Satellite Receiver

- U-Line Refrigerator
- LG Washer/dryer combo
- Blinds: Hunter Douglas
- Counters: Solid surface with edge detail
- Joinery: Crew aft cabinet with hanging locker, storage locker and crew drawers under berth hanging locker
- Appliances: Built-in refrigerator, freezer and washer/dryer combo

Captain / Crew Head

- Toilet: Headhunter Royal Flush
- Shower: Custom-molded fiberglass with built-in seat, stainless grab handles and tempered glass door
- Lighting: LED recessed room lights
- Counters: Solid surface
- Mirror: Mirror on medicine cabinet
- Flooring: Amtico commercial vinyl flooring

Electrical

- Generators: Twin 30kW, 1800 rpm Northern Lights with double compound mounts, sound shields, lift and water separating mufflers. Instrumentation includes water temperature, oil pressure and hour meters installed on main distribution panel in Crew Quarters. Both generators have remote start/stop in Pilothouse PTO and hydraulic pump installed on port and starboard generator for bow thruster
- Shore Power: (2) 100 Amp multi-voltage 1ph/3ph shore feeds. (2) Glendenning cable master cord reels at the bustles with 75' cords
- Shore Power Converters: (2) 24KVA Asea 50/60 cycle
- Indirect Lighting: 24VDC LED rope lighting
- Recessed Light Fixtures: LED with stainless steel fixtures
- Exterior Lighting: The side decks and stair courtesy lights are LED's. Overhead lighting on Flybridge and aft deck are LED. There are two flood lights for the Boat Deck and two spot lights for mast illumination on the hardtop
- Searchlight: (1) ACR Halogen, located on mast with dual controls
- Pilothouse Chart Lights: (1) 24VDC red chart light. (2) Overhead red lights with dash mount switch
- Shower Lights: 24VDC LED in sealed stainless fixture
- Reading Lights: All staterooms have 24V LED reading lights and 110V receptacles for table lamps

Flybridge / Boat Deck

- (2) Pairs of speakers
- Russound control panel
- Helm Station: With engine, bow thruster, stabilizer controls, engine instrumentation and electronics
- Windshield: Custom stainless framed tempered glass
- Wheel: 24" Stainless steel Destroyer type
- Helm Seats: (3) Stidd 500-XL Low Back helm chairs with footrests
- Settee: Molded settee with cushions and storage below
- Table: Fixed with solid surface and polished stainless post
- Hardtop: Composite construction covering Flybridge Deck has 24VDC LED overhead deck lighting, Boat Deck flood lights, horns, antennas, radar, mast flood lights and stereo speakers
- Wet Bar: Molded fiberglass cabinet with solid surface counter with sink, Raritan icemaker, U-Line refrigerator, Kenyon electric BBQ grill with stainless hood
- Hot Tub: Jacuzzi® spa starboard. Sun pad aft of bar port side
- Davit: Hydraulic powered Nautical Structures crane features 350 degrees of rotation, and 1700lb. load capacity
- Chocks: Removable, for tender
- Rails: Stainless rails with mid rail around Boat Deck
- Air Horn: Kahlenberg dual trumpet

Fore Deck

- Bow Sun Lounge: With cushions and cover. Includes escape hatch from VIP Stateroom
- Chain Locker: With fender storage area with line hooks, salt water wash-downs for anchors
- Freshwater and salt water wash-downs in bulwarks
- Underwater Lights: (4) Across stern

Side Decks & Rails

Side Decks:

- Wing Stations: (1) Port and (1) starboard, includes engine controls, starts and stops, steering and bow thruster control

Rails:

- Stainless rails: Transom stairs port and starboard, stern, across Aft Deck settee, Flybridge, bow and Boat Deck sides, Boat Deck aft. Railings sections, port and starboard of Pilothouse lift up for boarding access. All railings are 1 1/2" mirror-polished stainless, except swim step are 2". Boat Deck and swim step rails have mid-rails
- Rubrail: Bolt on rigid vinyl with 316 stainless half oval rub strip
- Windows: Frameless, bonded with UV resistant urethane, 3/8" gray laminated glass.

Forward and side pilothouse windows are ½" clear

Communications

Ship to Ship/Shore:

- Radios: VHF - ICOM® M604 VHF radio in pilothouse and on Flybridge and one command mic in Crew Quarters (OFF PH RADIO)
- Loud Hailer: Integrated with Pilothouse and FB VHF radios via Switch in Pilothouse

Satellite Communications (SATCOM) Components:

- Internet: Internet connectivity thru Syrens WiFi receiver/router. FB250 data
- Weather Information: XM Satellite
- Weather running on ships computer (Subscription required)

Telephone System:

- Telephone System: 8-Station digital phone system; all stations have speaker phones for intercom and paging. Phone system is connected to Satellite, Cell and Shore Phones for voice lines throughout. Port and starboard shore connection is provided aft with a 50 ft. combo Telephone / CATV shore cord
- Satellite Phone: KVH® FB250 Fleet Broadband (Subscription required)
- Cellular Phone: Telular GSM cellular phone SX7G system. Antenna on mast

Camera System:

- Elbex 12VDC hi-resolution color, pan/tilt/zoom cameras (2 total): (1) camera on the exterior of the Aft Deck overhead and (1) camera in the Engine Room

Audio / Video Electronics

Central Equipment:

- Satellite Television System: KVH M7 Satellite TV system; (9) satellite receivers: Salon, Aft Deck, Galley, Master Stateroom, VIP Stateroom, port and starboard Guest Staterooms, Captain's quarters and Crew's quarters

Interior / General

- Wardrobes: Sheathed with aromatic cedar and Majilite fabric with automatic LED lighting and closet rod
- Mattresses: Innerspring pillow-top mattresses

- Countertops: Galley, Salon bar and all head countertops are stone
- Main Salon: Mahogany veneer tops with solid Mahogany sea rail to match cabinetry. Bar has a stone countertop
- Dresser Tops and Nightstands: Mahogany veneer tops with solid Mahogany sea rails to match cabinetry
- Crew Quarters and Crew Galley: Solid surface with edge detail

Vessel Alarms and Monitoring

- 15" LCD color touch panel display installed in Pilothouse, 12" LCD color touch panel in main distribution panel and 6" LCD color touch panel in Captain's stateroom. Audible bells and buzzers throughout vessel
- (6) High water switches monitored for water detection. Water tank monitored and alarmed for low level
- Holding tank monitored and alarmed for high level
- Smoke detectors in Master, VIP, port and starboard staterooms, Salon, Pilothouse/Galley, Engine Room and Crew Quarters, aft stairs and Day Head
- Security system: Aft transom door, salon door, port and starboard Pilothouse doors, aft deck hatch and Flybridge hatch are monitored for unauthorized entry
- Condition of AC supply from all available sources with Volts and Amps monitored for each generator, shore power source and inverter
- Tank levels monitored; (3) fuel tanks, (1) fresh-water tank and (1) holding tank
- CO Alarms in Captain's stateroom, Engine Room and Crew stateroom

Mooring and Anchoring

- Stern: (2) Maxwell 24VDC capstans & (2) Bollards
- Bow: (2) 110-lb. Delta galvanized anchors
- (2) 300' galvanized G4 high-test chain, 1/2 for two anchors
- Stainless steel chain rollers, with stoppers
- (2) Maxwell 4000# windlasses
- Anchor chain wash-down system
- Fresh and salt water deck wash-downs in bulwarks

Systems

Diesel Fuel Systems:

- Fuel Gauges: Sight tubes located in Engine Room and Vessel Systems Monitor
- Fuel Tank: (1) Fuel tank w/3 separate compartments. Constructed of 5086 aluminum alloy, with electronic level monitoring and sight tube level indicators. Approximate total capacity:

2680 U.S. Gallons

Lube Oil System:

- Tanks (25) Gallon new oil tank & (25) gallon used oil tank
- Pump/Fittings: Electric pump with connection to engines generators for changing oil
- Air Conditioning: Triple compressor 15-ton chilled water system with heat and soft-start. Air handlers in all living space are individually controlled to provide separate zones. Staterooms include electric chill chasers for autonomous heating
- Ventilation: (7) Exhaust fans, one for each head and bilge tunnel
- Make-up Air: Vessel is equipped with 18,000 BTU make-up air system that replaces vessel's air twice an hour

Bilge System:

- Bilge Monitoring: Vessel System Monitor monitors 5 high water float switches and automatic pump operation with audible and visual alarms
- Bilge Pumps: 6 Rule 3700 gph pumps with automatic float switches. Auxiliary bilge pump system includes electric 110VAC pump with piping to each major compartment with strainers and foot valves

Freshwater System:

- Watermaker: (1) Sea Recovery® 1, 4000 gallon-per-day, commercial filters, fresh-water flush
- Pumps: (2) 220VAC pumps, with expansion tank
- Hot Water Heaters: (2) 28-gallon, with circulating hot water supply system
- Fresh Water Wash-down: On Fore Deck, Flybridge, Engine Room and Aft Deck
- Water Filters: (5) Micron sediment filters with UV sterilization light
- Water Tank: 316L Stainless steel tank with interior baffles and an approx. capacity of 425 gallons. Level monitoring by Vessel System Monitor. Fills on both port and starboard side of deck

Waste Water System:

- MSD: Headhunter MSD treatments with PLC touch control that handles both black and gray water treatment
- Holding Tank: Tank is composite with an inspection hatch. Tank is electronically monitored and has a capacity of approx. 360 gallons
- Gray Water Sump: (2) Approx. 15 gallon gray water box fitted with screens, supply and discharge lines for all showers and sink discharges. Sump tank has AC sump pump and 24V DC back-up pump

Compressed Air System:

- Air Compressor: 110VAC compressor located in the Engine Room operates horn and general Engine Room supply

Stabilizers

- Naiad model #360 with 9 sq. ft. fins, (1) Datum Digital Adaptive Stabilizer control on Flybridge and (1) Pilothouse LCD control panel with fin position icons, sensitivity controls, and individual function screens with context sensitive push buttons. (At Rest/Zero Speed option installed)

Safety Equipment

- Life Raft: 12-Man life raft
- Ring Buoy: 24" Diameter ring buoy secured on exterior of vessel
- Bell: Ship's bell, per Coast Guard regulations, stored in crew quarters
- EPIRPB: Emergency Position Indicator
- Fire Extinguisher: Dry Chemical type to be installed in suitable locations: (3) 10lbs., (6) 5lbs.

Main Engines / Drive Line

- Main Engines: (2) MTU Common Rail 10V2000 M93 Series engines, rated at 1,500hp each. Smartline electronic controls and displays, trolling valves and underwater exhaust
- Bow Thruster: Naiad 39hp hydraulic with five station controls
- Propeller Shafts: 3" Aquamet 22-H.S.
- Shaft Log and Seals: Shaft logs are bronze fittings, fitted with Tides Marine seals with spare seals installed on shafts. Cross flow lubrication is provided
- Steering: Teleflex SeaStar hydraulic power steering with engine-driven pump and two steering stations

Engine Room

- Floor: Removable floorboards with vinyl floor covering
- Tool box: Snap-on with tools
- Lights: 24VDC Fluorescent
- Work bench: with vise
- Door: Watertight door with viewing port
- Hatch: Access to aft deck
- Ventilation: Delta-T demisters to remove moisture from air. 220 VAC fans, (2) exhaust with dampers, (2) 18,000 BTU Slim Line AC units
- Fire Suppression: Engine room has a Fireboy® GA-series fire suppression system with manual/automatic controls. The system is tested and issued a certification by factory

representative

Swim Step

- Hot and cold water shower: In port side near the swim step

Remarks

"W" is a one-owner yacht built by an experienced owner and his full-time captain. She features At-Rest Stabilization by Naiad. Owner's desire to move into a larger vessel opens the door of opportunity for a potential buyer to purchase a 2014, well below replacement cost.

Exclusions

"VESSEL'S NAME" is a registered name and does not convey. Tender and Wave Runners **are not** included in the sale of this vessel. A detailed exclusion list will be supplied at time of an accepted offer.

Исключения

При продаже яхты исключаются личные вещи владельца.

Отказ от ответственности

Компания предоставляет описание судна или яхты добросовестно, но не может гарантировать точность этой информации, а также не ручается за техническое состояние. Покупатель должен проинструктировать своих агентов или оценщиков исследовать представленную информацию более подробно, по собственному желанию. Продажа судна или яхты, изменение цены или снятие с продажи будет происходить без предварительного уведомления.

ФОТОГРАФИИ

Transom



Aft Deck



Aft Deck



Salon



Salon / Bar



Formal Dining



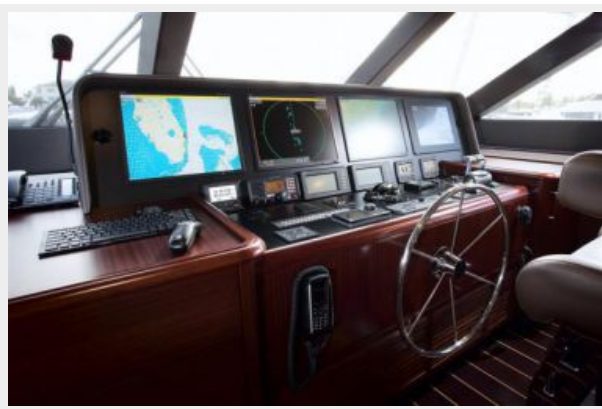
Formal Dining



Dinette



Pilothouse



Master Stateroom



Master Head



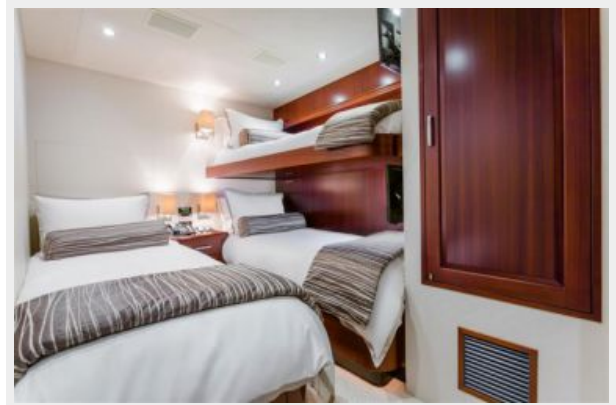
VIP Stateroom / Starboard



VIP Stateroom / Forward



Guest Stateroom / Port



Guest Stateroom / Port



Guest Head



Upper Helm



Electronics



Bow / Sun Pad



Upper Deck / Toys



Engine Room



Engine Room



Aft View



КОНТАКТЫ

Андрей Шестаков (Andrey Shestakov) – ведущий яхтенный брокер отдела продаж яхт и судов компании Shestakov Yacht Sales Inc. Официальный представитель Shestakov Yacht Sales Inc. для русскоговорящих клиентов в центральном офисе компании в Майами/Форт Лодердейл/Флорида/США.

Контактная информация

Email: andrey@shestakovyachtsales.com

Web: shestakovyachtsales.com

Телефоны

Краснодарский край: **+7(918)465-66-44**

США, Майами, Флорида: **+1(954)274-4435**

Время работы

Понедельник – Суббота: **9:00 - 21:00**
EDT

Воскресенье: **Закрето**

Адрес



Harbour Towne Marina, 850 NE 3rd St,
STE 213, Dania, FL 33004