

SHIP'S CAFE — MERRITT BOAT WORKS



Судостроитель:
MERRITT BOAT WORKS

Год постройки: 1987

Модель: Катер для спортивной рыбалки

Цена: **ЦЕНА ЯХТЫ ПО ЗАПРОСУ**

Местонахождение: United States

Длина общая: 60' 0" (18.29m)

Ширина: 17' 1" (5.21m)

Крейс. скорость: 26 Kts. (30 MPH)

Макс. скорость: 32 Kts. (37 MPH)

Купить Ship's Cafe — MERRITT BOAT WORKS а также выбрать подходящую вам яхту из нашего каталога яхт вам поможет опытный яхтенный брокер Андрей Шестаков. На сегодняшний день компания Shestakov Yacht Sales Inc. имеет большое количество яхт в собственном списке продаж, а также тесно сотрудничает со всеми крупными яхтенными производителями по всему миру.

Для того чтобы купить яхту Ship's Cafe — MERRITT BOAT WORKS а также проконсультироваться по любому вопросу связанному с покупкой, продажей, чартером яхт позвоните по телефону **+7(918)465-66-44**.

ОГЛАВЛЕНИЕ

ОГЛАВЛЕНИЕ	2
ХАРАКТЕРИСТИКИ	4
Обзор	4
Основная информация	4
Размеры	4
Скорость, вместимость и масса	4
Размещение	5
Корпус и палуба	5
Информация о двигателе	5
ПОДРОБНОЕ ОПИСАНИЕ	6
Cockpit	6
Mezzanine Deck	6
Lazarette	7
Foredeck	7
Deck and Hull	8
Deck and Superstructure	8
Tuna Tower	8
Hardtop	9
Bridge	9
Electrical	11
Electronics	11
Salon	11
Audio & Visual Equipment	12
Galley	12
Forward Companionway	13
Under Companionway Sole	13
Starboard Guest Stateroom	13
Starboard Guest Head	14

Port Guest Stateroom	14
Port Guest Head	15
Bow Master Stateroom	15
Master Head	16
Engine Room	16
Fuel Burn	17
Pump Room	18
Fire and Safety Equipment	18
Additional Equipment	18
Exclusions	19
Исключения	19
Отказ от ответственности	19
ФОТОГРАФИИ	20
КОНТАКТЫ	31
Контактная информация	31
Телефоны	31
Время работы	31
Адрес	31

ХАРАКТЕРИСТИКИ

Обзор

Major Price Reduction!

The 'Ship's Cafe' was completely refurbished in 2010. Repowered in 2007 with MAN V10-1100 Engines, 2 gens, 2 Eskimo icemakers, mezzanine seating, new Palm Beach Tower, economical 60gph at cruise, low hours. Very well maintained and one of a kind. You won't see a finer vessel of this age and condition. A must see, shows like new!

Основная информация

Тип судна: Катер для спортивной рыбалки

Модельный год: 1987

Год постройки: 1987

Страна: United States

Открытая палуба мостика: Да

Кубрик: Да

Размеры

Длина общая: 60' 0" (18.29m)

Ширина: 17' 1" (5.21m)

Длина привального бруса: 58' 6" (17.83m)

Скорость, вместимость и масса

Крейс. скорость: 26 Kts. (30 MPH)

Макс. скорость: 32 Kts. (37 MPH)

Вместимость воды: 325 Gallons

Объем топливного бака: 1640 Gallons

Размещение

Всего кают: 3

Всего ком. состава: 3

Корпус и палуба

Материал корпуса: Fiberglass Over Wood Отделка корпуса: Aluminum

Информация о двигателе

Двигатели: 2

Производитель: MAN

Модель: V10-1100

Тип двигателя: Inboard

Тип топлива: Diesel

ПОДРОБНОЕ ОПИСАНИЕ

Cockpit

Teak over plywood deck

Tonneau cover

Weather curtain, port and starboard

Teak gunwale coaming boards (new 2010)

Recessed gunwale rod holders, three port and three starboard

Transom door, starboard of centerline

Two stem cleats

Haweseyes in transom (new 2010)

Mounted rod holders on aft tower supports, three port and three starboard

Mounted fighting chair with rocket launcher

Under-gunwale rod storage (new 2010)

Two Hubbell 50-amp 125/250-volt power cord connections, starboard

(2) 12v receptacles

(2) 120v receptacles

VHF remote hook up

Seawater washdown

Freshwater washdown

Seven-step teak and stainless steel ladder to bridge, port (new 2010)

Overhead lights

Two overhead Bose stereo speakers (new 2010)

Teak step stool

Mezzanine Deck

Custom fabricated at Merritt Boat and Engine Boat Works (new 2010)

Two bench seats with cushions

Custom refrigeration unit

Custom freezer

Eskimo ice machine (new 2010)

Storage

Teak deck

Access to engine room, centerline

Lazarette

Eskimo ice chipper with raw water cooling pump (new 2010)

110-volt livewell circulating pump

Fortress anchor

Auxiliary Par bilge pump with approximately 10' of hose

Two electric/automatic bilge pumps

High water alarm switch

Two D.C. hold lights in safety cages

Sea Star hydraulic steering actuator

Rudder angle indicator sensor

Trim tab reservoir and control unit

Two fishbox macerator discharge pumps

Two underwater lights (new 2010)

Spare shore power cord

Foredeck

Fiberglass over plywood decks with nonskid at perimeter walk areas

Aluminum bow rail with burgee staff

Two bow cleats and chocks

Anchor rode hawse pipe

Four deck hatches

Teak toe rails

Deck and Hull

Fortress anchor with approx. 15' of chain and approx. 200' of 1" nylon rode

Stainless steel cleats

Aluminum safety rails

Deck and Superstructure

Fiberglass over plywood decks with nonskid

Spring cleats, two port and two starboard

Two diesel fills, port

Three diesel fills, starboard

Water fill, port forward

Navigation light on superstructure, port and starboard

Grab rail on superstructure, port and starboard

Two Rupp triple-spreader hydraulic outriggers, Serial Number 18483 (new 2010)

20" life ring, port and starboard

Tuna Tower

Custom Palm Beach Towers (new 2010)

Nonskid deck

Searchlight, forward centerline

Tachometers

Ritchie compass

Glendinning electronics engine control

Floodlight, forward

Dual trumpet horns

Northstar 6000i GPS/plotter

Icom IC-M304 VHF radio

Two floodlights, aft

Midrigger

Navigation light/anchor light Bolster

Steering wheel|

Single-lever clutch/throttle controls

Hardtop

Fiberglass with non-skid (new 2010)

Radar scanner

Stick antenna

McMurdo E.P .I.R.B., battery expiration October 2015

KVH satellite antenna

GPS antenna

VHF antenna

Bridge

Fiberglass deck with nonskid

Hardtop with 3/4 enclosure curtains (new 2010)

Ritchie Powerdamp compass, forward

Canvas cover to horizontal teak, forward at bulwark

(2) access doors to forward bulwark locker

Hydraulic outrigger power pack under brow

Approximately 12 Type I life jackets

Orion flare kit, expiration July 2014

24" life ring

6-person Offshore Commander life raft, inspection due July 2015

Six rod holders, aft

Full engine instrumentation

Miya Enoch electric teaser reels

Helm console cover

Cockpit sun shade with two arms, in forward locker|

11 0-volt air compressor, port in forward locker, with storage tank

Light in safety cage, port in forward locker

U-shaped bench seating with cushions and storage

JL stereo speaker in port and starboard benchseat, two port and two starboard

Gauges to water temperature, oil pressure, amps, and drive oil

Steering wheel

Single-lever Glendinning engine controls

Furuno NavNet

Icom IC-M602 VHF radio (new 2010)

Simrad AP28 autopilot (new 2010)

Furuno anemometer (new 2010)

M.A.N. engine displays

Garmin 740 GPS (new 2010)

Simrad video sounder (new 2010)

Glendinning engine control pad

ACR search light control

Autopilot drive pump (new 2010)

Mounted helm chair with cover

Mounted companion chair with cover, port and starboard

12-volt D.C./120-volt A.C. circuit panel, port under helm

Electrical

(2) Northern lights 25kw generators (port and starboard)

Racor Filters

Charles 12-volt 40 amp, Charles 24-volt 60 amp Battery Chargers

Electronics

RADAR: Furuno NavNet

VHF: Icom IC-M602; Icom IC-M304

SATTV: KVH

GPS: Furuno NavNet/ Gannin 740/ Northstar 6000i

DEPTH SOUNDER: Simrad video sounder

COMPASS: Two Ritchie magnetic

SEARCHLIGHT: ACR

AUTOPILOT: Simrad AP28

Salon

Carpeted sole with canvas cover (fully refurbished 2010)

Vinyl overhead with recessed overhead lighting (new 2010)

Teak paneling, trim, molding and cabinetry (2010)

Custom teak cabinet with Sub-Zero BF700 freezer and Sub-Zero wine cooler (new 2010)

Custom leather sofa with rod storage (new 2010)

Custom teak coffee table with storage (new 2010)

Bose stereo system (new 2010)

Custom electric leather lounge chair (new 2010)

Custom dinette, starboard forward, with leather bench seats, marble dining table, storage below raised sole, office printer (new 2010)

Samsung LCD television (new 2010)

Samsung DVD player

VHF

Audio & Visual Equipment

KVH TracVision with one receiver

Bose stereos and home entertainment theater

Samsung televisions

Galley

Teak sole with high gloss finish

Teak cabinetry

Marble countertop (new 2010)

Two bar stools (new 2010)

Miele 4-bumer Ceran cook top (new 2010)

Stainless steel sink with Franke faucet (new 2010)

Sub-Zero 700BR refrigerator (new 2010)

Miele microwave/convection oven (new 2010)

Cruisair air conditioning control

Forward Companionway

Carpeted sole with canvas runner

Vinyl overhead

Carpeted stairs

Miele T8013C clothes dryer (new 2010)

Miele W3033 clothes washer (new 2010)

Under Companionway Sole

Two electric/automatic bilge pumps

High water alarm

Fuel tanks, port and starboard

Starboard Guest Stateroom

Carpeted sole (new 2010)

Vinyl overhead (new 2010)

Upper and lower single bunk, starboard

Matching bedspreads

Matching pillow shams

Portlight

Cruisair air conditioning controls

Hanging locker with light

General GH-2-1121 5BC halon 1211 fire extinguisher, mfg. 1986, tag April 2001

Two-drawer storage, under lower bunk

Buckeye dry chemical fire extinguisher, no tag

Two stereo speakers

Starboard Guest Head

Entrance via companionway and starboard stateroom

Teak and holly sole

Vinyl overhead (new 2010)

Overhead hatch

Royal Flush head (new 2010)

Medicine locker with mirrored door and fluorescent light above

Stall shower with mounted showerhead, hot/cold water faucet, fluorescent overhead light, shower curtain, portlight

Blower

Linen locker

220/110-volt air conditioning circuit panel, in linen locker

Custom teak vanity with marble countertop, porcelain sink, faucet (new 2010)

Port Guest Stateroom

Carpeted sole (new 2010)

Vinyl overhead (new 2010)

Overhead lighting (new 2010)

Overhead hatch

Upper and lower single bunk, outboard, with two drawers below lower bunk

Single berth, inboard, with two drawers

Matching bedspreads

Three matching throw pillows Recessed lights, in aft soffit overhead

Two recessed overhead stereo speakers, in aft soffit overhead

Nightstand with two drawers and with storage locker, between berths (new 2010)

Cruisair air conditioning controls

Hanging locker, port, with light

Buckeye dry chemical fire extinguisher, tag July 2012

Port Guest Head

Entrance via port guest stateroom

Teak and holly sole

Vinyl overhead (new 2010)

Overhead fluorescent light

Royal Flush head (new 2010)

Vanity with porcelain sink and marble countertop, Grohe faucet (new 2010)

Medicine locker with mirrored door and fluorescent light above

Stall shower with mounted showerhead, hot/cold water faucet, fluorescent overhead light, shower curtain, portlight

Blower

Bow Master Stateroom

Carpeted sole (new 2010)

Vinyl overhead (new 2010)

Recessed overhead lights (new2010)

Overhead hatch

Double island berth with two-drawer storage, six shams, and throw pillow (new 2010)

Bedsread with two matching pillow shams

Two nightstands, each with drawer and storage (new 2010)

Two stereo speakers, in port overhead soffit

Three lights, in port overhead soffit (new 2010)

Portlight, port and starboard

Built-in bureau, starboard, with mirror (new 2010)

Three stereo speakers, starboard

Hanging locker, starboard aft, with light

Indirect LED lighting under berth (new 2010)

High water alarm sensor, under sole, forward

Samsung LCD television

Master Head

Entrance via Master stateroom

Teak and holly sole

Vinyl overhead

Overhead hatch

Royal Flush head (new 2010)

Linen locker

Custom vanity with teak cabinetry, marble countertop, porcelain sink, faucet (new 2010)

Medicine locker with two mirrored doors and fluorescent light above

Stall shower with mounted showerhead on hose with wall mount, hot/cold water faucet, fluorescent overhead light, shower curtain, access to rope locker (15' of chain and 250' of 1" nylon rode in rope locker)

Blower

Engine Room

Northern Lights generator panels, each with preheat, start, stop switches, gauges to water temperature, oil pressure, volts, and hour meters

Two 12-volt fuel transfer pumps

Six vaporproof battery cut-off switches

General halon 130 fire extinguisher, tag July 2012

Two electric/automatic bilge pumps

Two high water alarm switches

60-gallon lube oil tank

Emergency bilge pump off starboard engine

Hydraulic fluid tank, centerline for power steering

Racor fuel filter to each generator

Dual Racor filters to each engine

Fuel prime system for main and generators

Three D.C. hold lights in safety cages

Six fluorescent light fixtures

Stainless steel hot water tank, port and starboard

35-pound halon cylinder, hydrotest July 2012, inspection July 2012

Two Dometic ice chipper control panels

Switch panel

Oil change pump to manifold Oil storage tank

Six Odyssey PC2250 batteries date June 2012

Fuel tank, centerline

Two blowers

Tank Sentry fuel level monitor

Fuel Burn

60 gph @ cruise

Pump Room

Two refrigeration units

Watermaker Inc. watermaker with 593 hours

Four Cruisair air conditioning units

Two air conditioning raw water circulation pumps

Two electric/automatic bilge pumps

High water alarm switch

Engine room blower motor

Trace U2624SB inverter/charger

Three fluorescent lights

D.C. light with safety cage

Auxiliary Par 12-volt bilge pump with 15' pickup hose

Halon release sensor

Sea chest for all raw water intakes except main engines

Charles 12-volt 40 amp battery charger

Charles 24-volt 60 amp battery charger

Two Mach V freshwater pressure pumps

SHURflo back-up D.C. freshwater pressure pump

Fire and Safety Equipment

LIFE RAFT: 6-person Offshore Commander

E.P.I.R.B: McMurdo

Additional Equipment

Spare set of wheels

Exclusions

20" Life Rings personalized with boat name on port and starboard

Исключения

При продаже яхты исключаются личные вещи владельца.

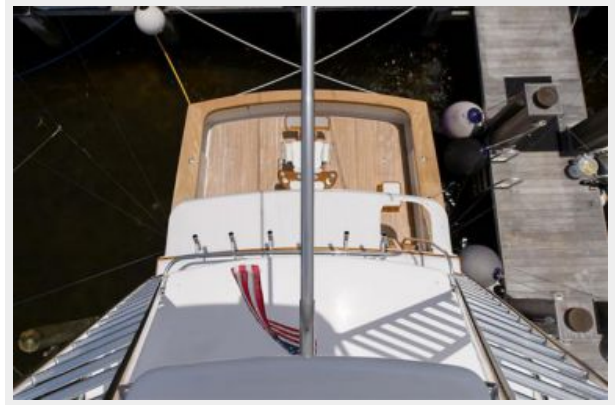
Отказ от ответственности

Компания предоставляет описание судна или яхты добросовестно, но не может гарантировать точность этой информации, а также не ручается за техническое состояние. Покупатель должен проинструктировать своих агентов или оценщиков исследовать представленную информацию более подробно, по собственному желанию. Продажа судна или яхты, изменение цены или снятие с продажи будет происходить без предварительного уведомления.

ФОТОГРАФИИ



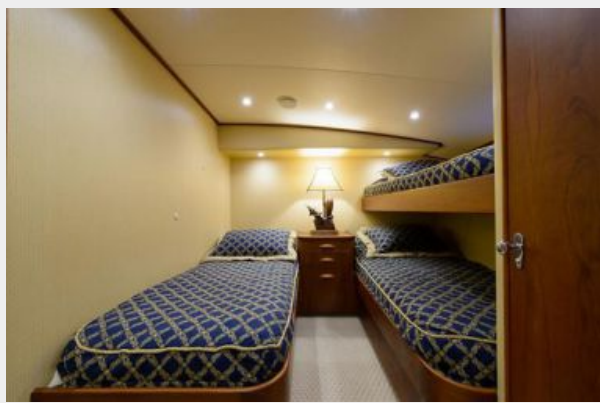




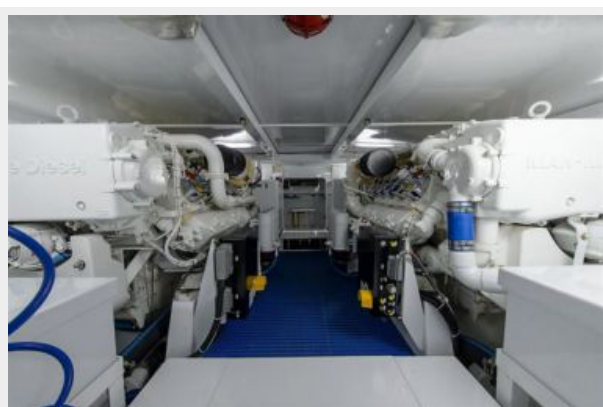
















КОНТАКТЫ

Андрей Шестаков (Andrey Shestakov) – ведущий яхтенный брокер отдела продаж яхт и судов компании Shestakov Yacht Sales Inc. Официальный представитель Shestakov Yacht Sales Inc. для русскоговорящих клиентов в центральном офисе компании в Майами/Форт Лодердейл/Флорида/США.

Контактная информация

Email: andrey@shestakovyachtsales.com

Web: shestakovyachtsales.com

Телефоны

Краснодарский край: **+7(918)465-66-44**

США, Майами, Флорида: **+1(954)274-4435**

Время работы

Понедельник – Суббота: **9:00 - 21:00**
EDT

Воскресенье: **Закрито**

Адрес



Harbour Towne Marina, 850 NE 3rd St,
STE 213, Dania, FL 33004