

WILLY'S WISH — NEPTUNUS



Судостроитель: NEPTUNUS

Год постройки: 1995

Модель: Моторная яхта

Цена: **ЦЕНА ЯХТЫ ПО ЗАПРОСУ**

Местонахождение: United States

Длина общая: 73' 0" (22.25m)

Ширина: 19' 5" (5.92m)

Макс. осадка: 5' 3" (1.60m)

Крейс. скорость: 25 Kts. (29 MPH)

Макс. скорость: 30 Kts. (35 MPH)

Купить **WILLY'S WISH — NEPTUNUS** а также выбрать подходящую вам яхту из нашего каталога яхт вам поможет опытный яхтенный брокер Андрей Шестаков. На сегодняшний день компания **Shestakov Yacht Sales Inc.** имеет большое количество яхт в собственном списке продаж, а также тесно сотрудничает со всеми крупными яхтенными производителями по всему миру.

Для того чтобы купить яхту **WILLY'S WISH — NEPTUNUS** а также проконсультироваться по любому вопросу связанному с покупкой, продажей, чартером яхт позвоните по телефону **+7(918)465-66-44**.

ОГЛАВЛЕНИЕ

| | |
|--|----|
| ОГЛАВЛЕНИЕ | 2 |
| ХАРАКТЕРИСТИКИ | 5 |
| Обзор | 5 |
| Основная информация | 5 |
| Размеры | 5 |
| Скорость, вместимость и масса | 5 |
| Размещение | 5 |
| Корпус и палуба | 5 |
| Информация о двигателе | 6 |
| ПОДРОБНОЕ ОПИСАНИЕ | 7 |
| Accommodations | 7 |
| Salon | 7 |
| Galley | 7 |
| Master Stateroom | 8 |
| Master Head | 8 |
| VIP Stateroom | 9 |
| Port Guest Stateroom | 9 |
| Laundry Room | 9 |
| Pilothouse | 10 |
| Fly Bridge | 11 |
| Machinery | 11 |
| Electronics and Navigational Equipment | 13 |
| Entertainment Systems | 14 |
| Tenders and Toys | 14 |
| Deck Equipment | 14 |
| Electrical Equipment | 15 |
| Structural | 17 |
| Исключения | 17 |

| | |
|--------------------------|----|
| Отказ от ответственности | 17 |
| ФОТОГРАФИИ | 18 |
| Salon | 18 |
| Salon | 18 |
| Galley | 18 |
| Galley | 18 |
| Lower Companionway | 18 |
| Galley | 18 |
| Master Stateroom | 19 |
| Master Stateroom | 19 |
| Master Stateroom | 19 |
| Master Bath | 19 |
| VIP Stateroom | 19 |
| VIP Stateroom | 19 |
| VIP Bath | 20 |
| Twin Stateroom | 20 |
| Twin Bath | 20 |
| Lower Helm | 20 |
| Lower Helm | 20 |
| Lower Helm Seating | 20 |
| Aft Deck Control | 21 |
| Aft Deck Dining | 21 |
| Flybridge Helm | 21 |
| Flybridge Access | 21 |
| Flybridge Dining | 21 |
| Flybridge Dining | 21 |
| Bow | 22 |
| Flybridge Bar with Grill | 22 |
| Bow View | 22 |

| | |
|-----------------------|----|
| Side View | 22 |
| Willy's Wish | 22 |
| КОНТАКТЫ | 23 |
| Контактная информация | 23 |
| Телефоны | 23 |
| Время работы | 23 |
| Адрес | 23 |

ХАРАКТЕРИСТИКИ

Обзор

Основная информация

| | |
|--------------------------|-----------------------|
| Тип судна: Моторная яхта | Модельный год: 1995 |
| Год постройки: 1995 | Страна: United States |

Размеры

| | |
|------------------------------|------------------------|
| Длина общая: 73' 0" (22.25m) | Ширина: 19' 5" (5.92m) |
| Макс. осадка: 5' 3" (1.60m) | |

Скорость, вместимость и масса

| | |
|--|-------------------------------------|
| Крейс. скорость: 25 Kts. (29 MPH) | Макс. скорость: 30 Kts. (35 MPH) |
| Водоизмещение: 135000 Pounds | Вместимость воды: 450 Gallons |
| Вместимость сточного бака: 400 Gallons | Объем топливного бака: 1400 Gallons |

Размещение

| | |
|-------------------------|--------------------------|
| Всего кают: 3 | Всего ком. состава: 3 |
| Каюты экипажа: 1 | Спальных мест экипажа: 2 |
| Комм. состав экипажа: 1 | |

Корпус и палуба

| | |
|------------------------------|--------------------------------|
| Материал корпуса: Fiberglass | Дизайнер корпуса: Frank Mulder |
|------------------------------|--------------------------------|

Информация о двигателе

Двигатели: 2

Производитель: Detroit Diesel

Модель: 16V92TA

Тип двигателя: Inboard

Тип топлива: Diesel

ПОДРОБНОЕ ОПИСАНИЕ

Accommodations

Three staterooms and forward crew quarters. Beautiful cherry wood finish throughout. The full beam Master Stateroom is amid ship and has a king size bed, en suite head with double sinks, a bidet, and a shower. Moving forward from the master stateroom to port is a guest stateroom with two single beds and en-suite head, to starboard is a storage closet and laundry and a large forward VIP cabin with two en-suite heads completes the roomy accommodations. Crew quarters and head for Captain and crew are forward of the main pilot house and entered through a large hatch on the main foredeck.

Salon

- Carpeted sole with carpet runners
- Vinyl-covered custom overhead panels around overhead mirrored panel with:
- Eighteen recessed lights
- Desk, starboard, with chair and central vacuum cleaner inlet
- Curved sofa, starboard, with indirect lighting at base
- Teak oval table with hinged leaves
- Recessed lighting at bar
- Two chairs, port
- Boston stereo speakers, port and starboard
- Draperies
- Micros CMK472 intruder alarm panel Entertainment center, port aft, with: Sony flat screen television; JVC KD-DVS300 DVD player; Clarion CMD5 AM-FM/Sirius/CD; DirecTV HD DVR receiver
- Built-in cabinetry, port
- Cruisair SMX air conditioning control

Galley

- Granite tiled sole
- Vinyl-covered overhead panels with painted trim
- General Electric Profile refrigerator/freezer with icemaker and stainless steel doors
- Granite galley counter
- Custom stainless steel sink with custom water faucet
- Thermador dishwasher
- Bosch 4-burner Ceran stovetop
- Thermador convection oven
- Overhead exhaust fan with work light

- Curved bar/pass-through to salon with overhead lockers, six recessed lights
- Mini wine cooler

Master Stateroom

- Carpeted sole
- Vinyl-covered overhead panels with ten recessed lights and two Boston speakers
- Hanging lockers, port and starboard
- Desk/vanity, port, with chair
- Portholes, two port and two starboard, with curtains
- Indirect lighting at valance and at base of hanging lockers, desk, nightstands, and settee
- Cruisair air conditioning control, port and starboard
- Nightstand with lamp, port and starboard
- Mirrored panels with wood trim, port and starboard outboard at berth Four vinyl-covered panels, aft of headboard
- King-sized berth with: mattress, bedspread, (2) bolster pillows, headboard, (4) storage drawers, padded bolster with wood trim
- Kenwood KDC-122 AM-FM/CD player
- L-shaped settee, starboard, with storage
- Central vacuum cleaner inlet
- Valances, port and starboard, with indirect lights
- Samsung DSS receiver
- Sony SLV-D300P DVD/VCR unit
- Mitsubishi flat panel television
- Overhead Boston speakers, port

Master Head

- Marble sole
- Vinyl-covered overhead panels with six recessed lights, vent blower
- Vanity with: Marble counter, (2) molded sinks, each with Fredrick Grohe single-lever water faucet
- Waterflush head
- Mirrored panel, forward of vanity, with wood border
- Bathtub with Fredrick Grohe water faucet, shower head on hose with wall mount
- Two portholes
- Curtains
- Storage lockers, forward of tub
- Indirect lighting at base of tub and vanity 5-place towel rack on radiant heat radiator
- Selector valve for sink drain to overboard discharge or gray water tank

VIP Stateroom

- Carpeted sole
- Vinyl-covered overhead panels with: (12) recessed lights, (2) Boston stereo speakers, (2) hatches to foredeck
- King-sized island berth with: mattress, (2) drawers, padded bolster with wood trim, bedspread, headboard, accent pillows, recessed lights at base
- Built-in nightstands, port and starboard, with recessed lights at base and table lamps
- Built-in bureau, port and starboard, with recessed lights at base
- Built-in outboard storage shelves, port and starboard
- Entertainment center, aft: Sharp flat panel television, DirecTV HD DVR receiver
- Hanging lockers, port and starboard, with recessed lights at base
- Central vacuum cleaner inlet
- Kenwood AM-FM/CD player
- Bow thruster under sole
- Cruisair air conditioning control

Port Guest Stateroom

- Marble tile sole
- Vinyl-covered overhead panel with three lights, vent blower
- Waterflash head
- Vanity with marble counter and molded sink with hot/cold water faucet by Fredrick Grohe
- (2) Mirrored doors to outboard storage above vanity
- Porthole
- Curtains
- Storage, forward of porthole
- Shower stall with: (2) doors, hand-held shower head with adjustable wall mount, Frederick Grohe hot/cold water faucet, overhead light, overhead vent
- Five-place towel bar on radiant heat radiator
- (2) Linen lockers
- Selector valve for sink drain to overboard discharge or gray water tank

Laundry Room

- Ceramic tile sole
- Formica overhead with two recessed lights
- Ltho blower with 3-speed switch
- Outboard forward storage
- Electric/automatic bilge pump
- Avanti washing machine
- Whirlpool dryer

- High water alarm
- Central vacuum cleaner

Pilothouse

- Carpeted sole
- Vinyl-covered overhead panels with ten recessed lights
- Electrical distribution panels, starboard
- (2) Westerbeke generator control panels with hour meters
- Cruisair air conditioning control, port and starboard
- Sliding doors to salon, galley, side deck
- Stidd Wide Double helm chair
- Curved leather-covered bench/dinette seat with indirect lighting at base, port
- Sea Tel control unit
- Switches for: dashboard lights, deck light, arch light, anchor light, navigation light, steam light, demisters, hot water tank, fuel, port and starboard, fan engine room, black water discharge, grey water discharge, freshwater level
- Chart drawer
- ICOM IC-M602 VHF radio
- Storage lockers, port at helm
- DDEC engine readouts
- Gauges for volts, fuel tanks, water tank, clocks, and rudder angle indicator
- Robertson AP45 autopilot
- (2) Jog sticks for use as engine controls
- Bow and stern thruster controls
- Emergency manual control switch
- DDEC controls
- DDEC station activation/synchronize/idle panel
- (3) Windshield wiper switches
- (2) Engine ignitions
- (2) Engine start switches
- Dashboard lights
- Anchor windlass control
- Horn switch
- Steering wheel
- Interphase color twin scope forward-looking sonar
- (2) Raymarine E120 plotter/GPS/sounder/radar
- Neptunus 218 vessel schematic with indicator lights for: 24-volt, generator, shore, inverter, anchor light, steam light, stern light, navigation lights, engine lights 220V, engine lights 24V, (2) holding tank max and min lights, engine blowers, (3) bilge pumps
- Furuno RD-30 speed/depth
- ACR searchlight control

Fly Bridge

- Painted fiberglass hardtop with twelve recessed lights
- Nonskid fiberglass deck
- Three arch lights
- Hubbell TV connection
- Radar arch with: Navigation lights, port and starboard, (4) GPS antennas, (2) VHF antennas, (2) Loud hailer horns, forward navigation light and stern light, anchor light, TracVision satellite dome, Sirius antenna
- Storage locker, forward, with hydraulic steering reservoir with pressure gauge
- Helm cover
- (2) DDEC engine information displays
- ACR searchlight control
- DDEC station activation/synchronize/idle panel
- Rudder angle indicator
- DDEC controls
- Wet bar, aft, with:
 - Granite top
 - Princess electric grill
 - Stainless steel sink with single lever faucet
 - Isotherm icemaker
 - Isotherm refrigerator
- Trim tab controls
- (2) Cellular phone antennas
- Clarion CMD4 radio
- Robertson F200 autopilot remote
- ICOM IC-M602 VHF radio
- Clarion Marine AM-FM/CD controller
- (2) Raymarine E120 GPS/plotter/radar
- Interphase Twin Scope color forward facing sonar
- Furuno RD30 depth/speed
- Steering wheel
- Stereo speakers, port and starboard
- Fitted carpet runners
- Bow/stern thruster controls

Machinery

ENGINE LOCATION: Under aft deck/salon sole

ENGINES: NUMBER/TYPE: 2/diesel

MANUFACTURER/MODEL: Detroit Diesel 16V92TA

HORSEPOWER/MAX RPM 1450 horsepower at 2300 RPM

NUMBER OF CYLINDERS: 16

ENGINE SERIAL NUMBER[S]: Port: 16VF009931
Starboard: 16VF009932

ENGINE YEAR: Original

WHEN OVERHAULED: Starboard Engine 2007

REDUCTION GEAR/MODEL/RATIO: ZF/BW2555/2.030:1

ENGINE BED: Fiberglass stringers

PAN UNDER ENGINE: Trapped area

ENGINE COOLING SYSTEM: Freshwater

FUEL FILTERS: Primary: triple Racor
Secondary: Detroit Diesel

BOWLS: Plastic

EXHAUST COOLED: Raw water

EXHAUST SILENCER: Water collector type muffler

ENGINE GENERATOR: Alternator

| | |
|---------------------|--|
| CONTROLS: | Electronic |
| STUFF BOX: | Dripless seals |
| BILGE PUMPS: | (3) electric/automatic (2) sump Diverters off port and starboard engine raw water intake |
| THRU-HULL FITTINGS: | Bronze with seacocks; bonded |
| PROPELLERS: | 5-blade |
| SPARE PROPELLERS: | None |
| PROPELLER SHAFTS: | 3" 1250 gal/day |
| WATER MAKER: | |

Electronics and Navigational Equipment

| | |
|------------------------------|----------------|
| RUNNING LIGHTS/ANCHOR LIGHT: | Electric |
| SEARCHLIGHT: | ACR |
| BOW THRUSTER: | Side Power |
| STERN THRUSTER: | Side Power |
| SAT COMM: | Wave Talk |
| SAT TV: | KVH Sea Tel |
| AUTOPILOT: | Robertson Ap45 |
| RADAR: | Raymarine E120 |

GPS: Raymarine E120

RADIOPHONE: ICOM IC-M602 VHF

DEPTHFINDER: Raymarine E120

ANTENNAS: 2 VHF, Radar, (4) GPS, Sirius, (2) Cellular Phone

Entertainment Systems

TELEVISIONS: Sony Sharp Mitsubishi

STEREOS: Clarion Kenwood

SATELLITE TELEVISION: 5

SATELLITE TELEVISION RECEIVERS: 5

Tenders and Toys

MAKE/MODEL: Rendova 12.5'

HULL IDENTIFICATION NUMBER: REN12072K506

MOTOR/MODEL: Yamaha F50TLA

MOTOR SERIAL NUMBER: 6CIL1007339K

Deck Equipment

DECK HARDWARE: Stainless steel

GROUND TACKLE: Fortress FX23 anchor Bruce 50-lb anchor with approximately 300' of chain

ANCHOR WINDLASS: Orvea electric

TENDER DAVIT: UMT Low Profile

Electrical Equipment

PORT GENERATOR

LOCATION: Port forward in engine room

MANUFACTURER: Westerbeke

MODEL NUMBER: 32.0BEDA

SERIAL NUMBER: 693007

KILOWATTS: 32

NUMBER OF CYLINDERS: 4

RPM: 1800

VOLTAGE; CYCLES: 120/240; 60

EXHAUST LINE: Hose connected; fiberglass muffler

FUEL FILTERS: Racor

FUEL FILTER BOWL: Plastic

STARBOARD GENERATOR

LOCATION: Starboard forward in engine room

MANUFACTURER: Westerbeke

MODEL NUMBER: 12.5BTD

SERIAL NUMBER: Inaccessible

KILOWATTS: 12.5

NUMBER OF CYLINDERS: 4

RPM: 1800

VOLTAGE; CYCLES: 120/240; 60

EXHAUST LINE: Hose connected; fiberglass muffler

FUEL FILTERS: Racor

FUEL FILTER BOWL: Plastic

BATTERIES/WIRING:

BATTERY CHARGERS[S]: Sentry 12V40A Newmar HDM-24-80 Newmar RM-2495

STORAGE BATTERIES, ENGINE: Four 12-volt

| | |
|------------------------|--|
| | In covered battery boxes: |
| BATTERY INSTALLATION: | Six 12-volt centerline in engine room Six starboard outboard in engine room |
| LIGHTING: | 24-volt A.C. 110-volt A.C. |
| FUSED/BREAKERS/GROUND: | Yes/yes |
| SWITCHBOARD: | Engine room Pilothouse |

Structural

BOTTOM: Molded fiberglass

Исключения

При продаже яхты исключаются личные вещи владельца.

Отказ от ответственности

Компания предоставляет описание судна или яхты добросовестно, но не может гарантировать точность этой информации, а также не ручается за техническое состояние. Покупатель должен проинструктировать своих агентов или оценщиков исследовать представленную информацию более подробно, по собственному желанию. Продажа судна или яхты, изменение цены или снятие с продажи будет происходить без предварительного уведомления.

ФОТОГРАФИИ

Salon



Salon



Galley



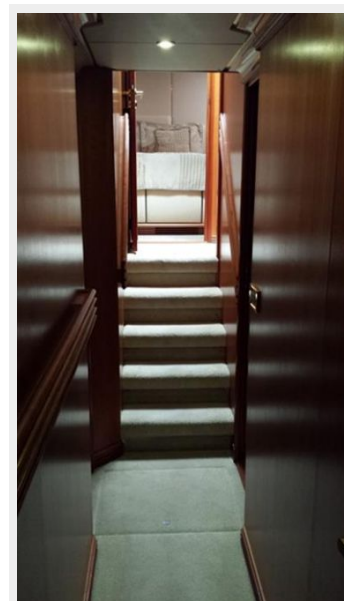
Galley



Galley



Lower Companionway



Master Stateroom



Master Stateroom



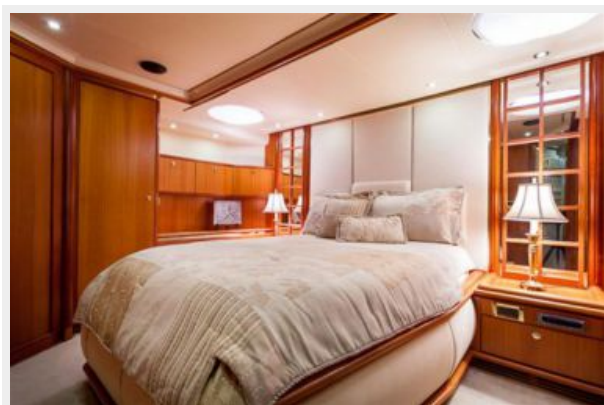
Master Stateroom



Master Bath



VIP Stateroom



VIP Stateroom



VIP Bath



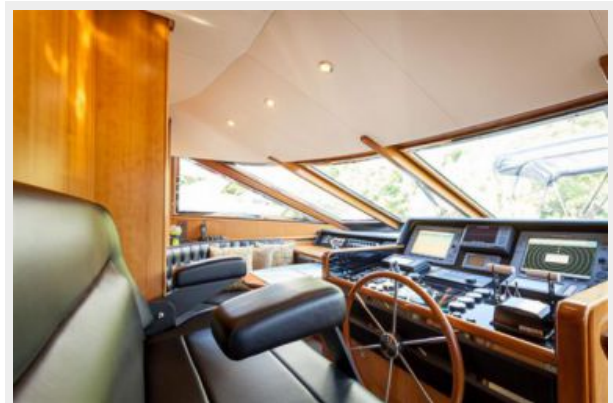
Twin Stateroom



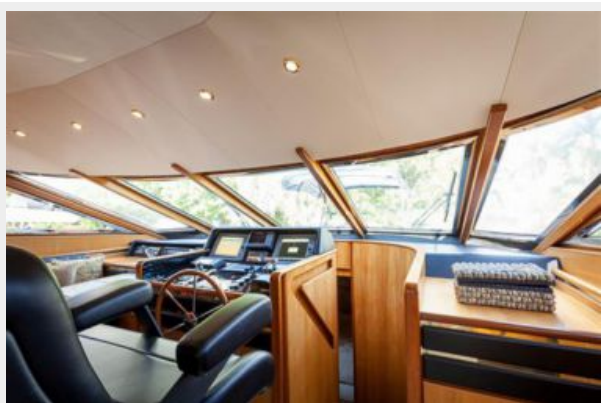
Twin Bath



Lower Helm



Lower Helm



Lower Helm Seating



Aft Deck Dining



Aft Deck Control



Flybridge Access



Flybridge Helm



Flybridge Dining



Flybridge Dining



Flybridge Bar with Grill



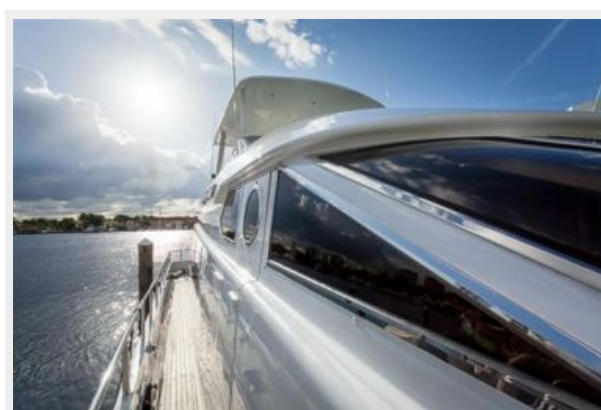
Bow



Bow View



Side View



Willy's Wish



КОНТАКТЫ

Андрей Шестаков (Andrey Shestakov) – ведущий яхтенный брокер отдела продаж яхт и судов компании Shestakov Yacht Sales Inc. Официальный представитель Shestakov Yacht Sales Inc. для русскоговорящих клиентов в центральном офисе компании в Майами/Форт Лодердейл/Флорида/США.

Контактная информация

Email: andrey@shestakovyachtsales.com

Web: shestakovyachtsales.com

Телефоны

Краснодарский край: **+7(918)465-66-44**

США, Майами, Флорида: **+1(954)274-4435**

Время работы

Понедельник – Суббота: **9:00 - 21:00**
EDT

Воскресенье: **Закрето**

Адрес



Harbour Towne Marina, 850 NE 3rd St,
STE 213, Dania, FL 33004