

WILD WIND — VIKING



Судостроитель: VIKING

Длина общая: 74' 0" (22.56m)

Год постройки: 2005

Ширина: 19' 9" (6.02m)

Модель: Катер для спортивной рыбалки

Цена: ЦЕНА ЯХТЫ ПО ЗАПРОСУ

Местонахождение: United States

Купить **Wild Wind — VIKING** а также выбрать подходящую вам яхту из нашего каталога яхт вам поможет опытный яхтенный брокер Андрей Шестаков. На сегодняшний день компания **Shestakov Yacht Sales Inc.** имеет большое количество яхт в собственном списке продаж, а также тесно сотрудничает со всеми крупными яхтенными производителями по всему миру.

Для того чтобы купить яхту **Wild Wind — VIKING** а также проконсультироваться по любому вопросу связанному с покупкой, продажей, чартером яхт позвоните по телефону **+7(918)465-66-44**.

ОГЛАВЛЕНИЕ

ОГЛАВЛЕНИЕ	2
ХАРАКТЕРИСТИКИ	4
Обзор	4
Основная информация	4
Размеры	4
Скорость, вместимость и масса	4
Размещение	4
Корпус и палуба	5
Информация о двигателе	5
ПОДРОБНОЕ ОПИСАНИЕ	6
Hull	6
Engine Room	6
Mechanical	6
Cockpit	6
Deck Equipment	6
Enclosed Bridge	6
Electronics	7
Decor	7
Salon	8
Galley	8
Companionway	8
Master Stateroom/Head	8
VIP Stateroom/Head	8
Crew Stateroom/Head	9
Exclusions	9
Disclaimer	9
Исключения	9
Отказ от ответственности	9

ФОТОГРАФИИ	10
КОНТАКТЫ	21
Контактная информация	21
Телефоны	21
Время работы	21
Адрес	21

ХАРАКТЕРИСТИКИ

Обзор

This Viking 74 Enclosed Bridge Convertible is one of those rarely seen, often talked about *custom yachts*. The experienced and multiple Viking owner designed this to be her last Viking, so *Wild Wind* is truly one of the most cruising friendly, fish ready convertibles on the market. The added fuel capacity affords extended range while an extensive array of custom electronics make it easy to navigate there. Stored inside a heated building during winter months, come summer this Great Lakes Enclosed Bridge Viking fit with MTU V-16's will comfortably and effortlessly cruise at 29 knots. 74 feet at 29 knots...it must be a VIKING!!

Основная информация

Тип судна: Катер для спортивной рыбалки

Подкатегория: Convertible

Модельный год: 2005

Год постройки: 2005

Страна: United States

Верх: Enclosed

Открытая палуба мостика: Да

Кубрик: Да

Размеры

Длина общая: 74' 0" (22.56m)

Ширина: 19' 9" (6.02m)

Скорость, вместимость и масса

Водоизмещение: 121000 Pounds

Вместимость воды: 385 Gallons

Вместимость сточного бака: 205 Gallons **Объем топливного бака:** 3000 Gallons

Размещение

Всего кают: 3

Корпус и палуба

Материал корпуса: Fiberglass

Информация о двигателе

Двигатели: 2

Производитель: MTU

Модель: Series 2000-V16 M91

Тип двигателя: Inboard

Тип топлива: Diesel

ПОДРОБНОЕ ОПИСАНИЕ

Hull

Additional forward fuel tank, (3) total Hull bottom barrier coat

Engine Room

24V fresh water backup pump 1200gpd water maker with auto back flush (2) tool boxes Generator gauge package with start buttons at helm Air compressor Air line for air compressor in cockpit dockside box Door to crew quarters from engine room All pumps painted snow white Line for oil change system run to cockpit dockside box Engine tachometers and additional fuel gauges at engine room entrance Water gauge at engine room entrance Kaydon fuel polishing system Charles Power System

Mechanical

Upgraded engines to DDC/MTU Series 2000-V16, 2030 HP 1000 hour engine service just completed Electronic trolling valves Hydraulic bow thruster Spare propellers in custom Viking storage crates

Cockpit

Rupp 39' triple spreader outriggers Dual thermostat on cockpit freezer Step refrigerator Eskimo ice machine Fresh and sea water Y-valve Outrigger hold-in arms in lower position (6) haunch rod holders Live well in cockpit sole Plum live well in transom fish box Upgraded cockpit speakers to BOSE 151 Electric grill Cockpit overhang misters Additional cockpit step box

Deck Equipment

Tenderlift 2000# davit with hydraulic rotation and telescoping arm allowing launch/retrieval of tender from either side of deck Nautica 2005 Rib 15' inflatable with Yamaha 60 hp 4-stroke outboard Switlick emergency raft Lewmar RC2500 hydraulic windlass Fender tracks under cockpit rub rail port and starboard Fresh and sea water washdowns inside anchor locker Stainless steel dog downs for exterior doors Additional foredeck hatches Dual shore power inlets in anchor locker Custom Bruce anchor installation with Danforth spare in anchor locker

Enclosed Bridge

Enclosed bridge with spiral staircase Sharp 20" flat screen TV 110V outlet in floor riser below

cocktail table Teak molding on face of helm (1) STIDD powered ultraleather helm seat (2) STIDD ultraleather helm bench seats Ultraleather flybridge sofa with storage Central vacuum system Factory aft helm docking station Custom aft control station with bow thruster on aft aluminum railing Subzero refrigerator For bridge clearances all hardware and electronics on top of hardtop is designed for quick disassembly and removal with davit Docking station covers Custom bottle storage Radar mast (8) rod rocket launcher Recessed 24V Miya Epoch US8 upgraded teaser reels

Electronics

Furuno FR2127BB(25kw) Black Box Radar System with 6.5' Open Array,96 Mile Range Furuno CU200 Chart Card Reader(FAR2XX7 radar series) Simrad-Robertson AP25 Autopilot System Simrad-Robertson RI35Mk2 Rudder Indicator Simrad GC80 Compact High Speed Gyro System Furuno FCV1200BB Video Echo Sounder Furuno CH270BB; Searchlight Sonar System with Sonar Tube Indicator Light for Helm (2) Elbex EXC-8207M-OW Color High Res. Tilt, Pan Zoom Camera - Engine Room Elbex EXC-8207M-OW Color High Res. Tilt, Pan Zoom Camera – Aft Deck (2) Extron Digital Video Scaler for Viewing DSS, CCV, Images on LCD Monitor Extron Composite Video Switcher (3) NEC 21.3" LCD2180UX-Black Monitor(1600x1200 / 60Hz .26mm) (3) Extron VGA Switch(4 input- 1output) Seatel 3000 Satellite Telephone/Data with 10" Compact Dome Antenna Seatel Coastal 24 Marine Stabilized DSS Antenna System(New March 2011) (5) DSS Receiver with UHF Remote Control (4) Xantech IR Repeater & Injector For Five DSS Satellite Receivers Universal Remote Control (salon) Universal Remote Control (master stateroom) Marantz IS301 iPod Docking System (2) Channel Plus 5545 Quad Input Modulator Set-top Panasonic Digital Super Hybrid Telephone System and Panasonic KSV50 Voice Mail Module(4 line/8 digital sets) KX-TD170 Exemption Module for KX-TD816 (3) Panasonic Deluxe LCD Digital Speakerphone with Data Port Telular Phonecell SX5e Fixed Cellular Terminal (requires customer supplied AT&T Sim Card) Digital Marine Dual Band Wireless Cellular Amplifier / Repeater Carlisle & Finch 200 Watt Xenon Low Profile Searchlight(15 million candlepower)110vac Carlisle & Finch CF200 Searchlight Azimuth Indicator Opinion (2) SEA157 VHF/DSC Radiotelephone with Handset SEA235R 150 watt HF/Single Side Band Digital Radiotelephone SEAHailer with Fwd and Aft Horns Eclipse AVX2454 Am/Fm/CD Stereo with Touch Screen ACR GeoFix 406 Epirb, w/ Integral GPS & Bracket Cat 1 Simrad RS87 VHF Radio Telephone System with three Active Handsets Furuno RD-30 Digital Depth Remote Display XM Satellite Weather WxWorx on Water Base Software Lenovo Weather Computer System Furuno Navnet 3D 12.1" MFD /Chart Plotter with GP330 GPS Antenna Furuno 3D Chart Unlock Code MM3-R90-1P0 Eastern Great Lakes Northstar 962 Chartplotter ICOM IC-756pro2 Ham Radio System and Amplifier Grounding grid for ham radio

Decor

Upgraded custom raised teak panel cabinet doors, drawers, stateroom doors including vanities and companionway doors throughout boat Teak salon valances Custom sized dinette with granite table Genuine leather salon sofa with storage Custom wallpaper

Salon

Day head with granite vanity top forward of galley Custom pantry with shelves and electronics cabinetry forward of galley Carpet runner Channel Plus system BOSE Lifestyle system in salon and fed to VIP and crew staterooms Silhouette shade over salon door Custom shades Etched glass above dinette Custom cabinet between sofa and dinette for a printer Storage in bridge face of entertainment center cabinet Bar stools

Galley

Custom granite counter top Under counter Sub Zero refrigerators (4) drawers Under counter Sub Zero freezer (2) drawers Conventional oven under surface mount (4) burner electric stove top Sharp microwave/convection oven Dishwasher Trash compactor Amtico Teak & Holly flooring in galley, dinette and under galley island bar stools Custom pull-out spice rack in upper galley cabinet

Companionway

Teak companionway handrail Custom storage cabinets with shelves and sea rails along starboard side of companionway SeaVac central vacuum systems with (3) outlets throughout boat and storage under steps for vacuum hose

Master Stateroom/Head

Custom layout with separate dressing area and couch Upgraded mattress Hanging locker with double hanging bars and shelves All hanging lockers have custom teak and mirror doors (4) drawer dresser Night tables with slide out trays Granite night table vanity tops Higher outboard credenza with drawers and hampers Vanity in dressing area with drawers on left side and teak lift top with mirror Refrigerator in corner cabinet dressing area with a Sharp 15" flat panel TV above Additional hanging locker and custom locker with (4) 30" drawers and storage above in dressing area Granite vanity top above refrigerator in dressing area Mirrored head ceiling Granite head vanity top

VIP Stateroom/Head

VIP layout with lower queen bed and bunk over Telephone outlet Sharp 15" flat panel TV Additional shelving for book storage Upgraded mattresses Mirrored head ceiling Granite head vanity top

Crew Stateroom/Head

Sharp 15" flat panel TV Telephone outlet Upgraded mattresses Door to engine room from crew quarters Mirrored head ceiling Granite head vanity top

Exclusions

Owner's personal belongings

Disclaimer

The Company offers the details of this vessel in good faith but cannot guarantee or warrant the accuracy of this information nor warrant the condition of the vessel. A buyer should instruct his agents, or his surveyors, to investigate such details as the buyer desires validated. This vessel is offered subject to prior sale, price change, or withdrawal without notice.

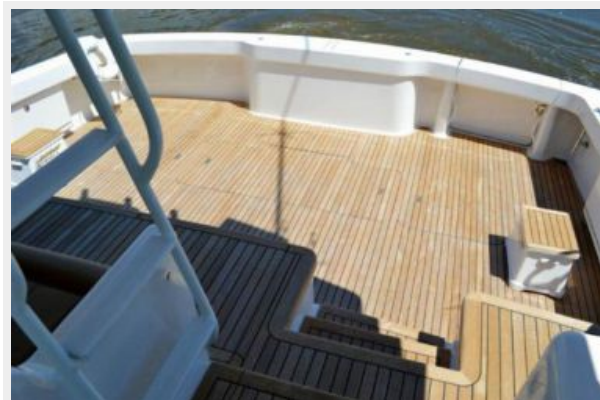
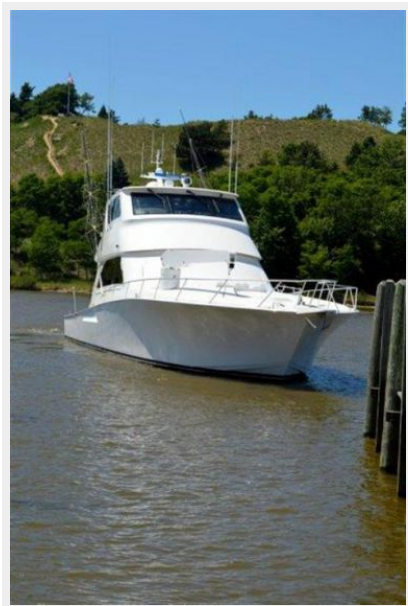
Исключения

При продаже яхты исключаются личные вещи владельца.

Отказ от ответственности

Компания предоставляет описание судна или яхты добросовестно, но не может гарантировать точность этой информации, а также не ручается за техническое состояние. Покупатель должен проинструктировать своих агентов или оценщиков исследовать представленную информацию более подробно, по собственному желанию. Продажа судна или яхты, изменение цены или снятие с продажи будет происходить без предварительного уведомления.

ФОТОГРАФИИ

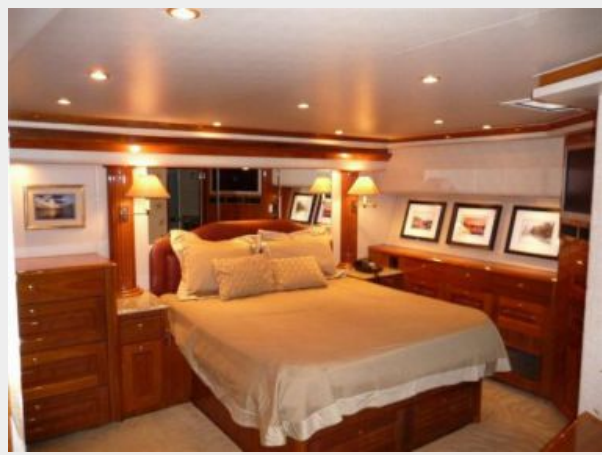






















КОНТАКТЫ

Андрей Шестаков (Andrey Shestakov) – ведущий яхтенный брокер отдела продаж яхт и судов компании Shestakov Yacht Sales Inc. Официальный представитель Shestakov Yacht Sales Inc. для русскоговорящих клиентов в центральном офисе компании в Майами/Форт Лодердейл/Флорида/США.

Контактная информация

Email: andrey@shestakovyachtsales.com

Web: shestakovyachtsales.com

Телефоны

Краснодарский край: **+7(918)465-66-44**

США, Майами, Флорида: **+1(954)274-4435**

Время работы

Понедельник – Суббота: **9:00 - 21:00**
EDT

Воскресенье: **Закрито**

Адрес



Harbour Towne Marina, 850 NE 3rd St,
STE 213, Dania, FL 33004