

CARTE BLANCHE — TRINITY



Builder: TRINITY

Year Built: 2002

Model: Motor Yacht

Price: PRICE ON APPLICATION

Location: United States

LOA: 124' 0" (37.80m)

Beam: 26' 0" (7.92m)

Max Draft: 6' 3" (1.91m)

Cruise Speed: 15 Kts. (17 MPH)

Max Speed: 18 Kts. (21 MPH)

Our experienced yacht broker, Andrey Shestakov, will help you choose and buy a yacht that best suits your needs **CARTE BLANCHE — TRINITY** from our catalogue. Presently, at Shestakov Yacht Sales Inc., we have a wide variety of yachts available on our sale's list. We also work in close contact with all the big yacht manufacturers from all over the world.

If you would like to buy a yacht **CARTE BLANCHE — TRINITY** or would like help answering any questions concerning purchasing, selling or chartering a yacht, please call **+1(954)274-4435**

TABLE OF CONTENTS

TABLE OF CONTENTS	2
SPECIFICATIONS	5
Basic Information	5
Dimensions	5
Speed, Capacities and Weight	5
Accommodations	5
Hull and Deck Information	5
Engine Information	6
DETAILED INFORMATION	7
MAIN SALON	7
DINING SALON	7
GALLEY	7
MASTER STATEROOM	8
ON DECK VIP STATEROOM	8
PORT VIP STATEROOM	8
STARBOARD VIP STATEROOM	8
TWIN GUEST STATEROOM	9
CREW QUARTERS	9
FLYBRIDGE	9
PILOTHOUSE	10
AFT DECK	10
ENGINE / MECHANICAL EQUIPMENT	10
ELECTRICAL SYSTEM	11
ELECTRONICS & NAVIGATIONAL EQUIPMENT	11
SAFETY AND FIRE PROTECTION	12
TENDERS & TOYS	13
INTERIOR UPGRADES	13
EXTERIOR UPGRADES	13

AUDIO & VISUAL EQUIPMENT UPGRADES	13
ELECTRONICS / PILOTHOUSE UPGRADES	14
ENGINEERING UPGRADES	14
Exclusions	16
Disclaimer	16
PHOTOS	17
Main Salon	17
Main Salon	17
Main Salon	17
Main Salon/Dining	17
Salon Bar	17
Dining Salon	17
Guest Foyer	18
Master Stateroom	18
Master Stateroom	18
Master Stateroom	18
Master Bathroom	18
On Deck VIP Stateroom	18
VIP Bathroom	19
Guest Stateroom (Port)	19
Guest Stateroom (Starboard)	19
Guest Bathroom (Starboard)	19
Flybridge	19
Twin Guest Stateroom	19
Jacuzzi	20
Aft Deck	20
Sundeck	20
Sundeck	20
Aft Deck Bar	20

Aft Deck	20
Layout	21
Name Board	21
CONTACTS	22
Contact details	22
Telephones	22
Office hours	22
Address	22

SPECIFICATIONS

Basic Information

Category: Motor Yacht	Model Year: 2002
Year Built: 2002	Refit Year: 2014
Country: United States	Fly Bridge: Yes

Dimensions

LOA: 124' 0" (37.80m)	Beam: 26' 0" (7.92m)
Max Draft: 6' 3" (1.91m)	

Speed, Capacities and Weight

Cruise Speed: 15 Kts. (17 MPH)	Max Speed: 18 Kts. (21 MPH)
Gross Tonnage: 265 Pounds	Water Capacity: 2500 Gallons
Fuel Capacity: 10500 Gallons	

Accommodations

Total Cabins: 5	Sleeps: 11
Crew Cabin: 3	Crew Sleeps: 6

Hull and Deck Information

Hull Material: Aluminum	Hull Configuration: Semi-Displacement
Hull Color: white	Interior Designer: Scott Carpenter

Engine Information

Engines: 2

Manufacturer: MTU

Model: 16V2000

Engine Type: Inboard

Fuel Type: Diesel

DETAILED INFORMATION

MAIN SALON

- Large L-shaped Settee
- Table with Chairs
- Intimate Wet Bar **Entertainment Center, includes:**
- Apple TV
- Sony PS4 with digital wireless headphones
- Samsung 46" 8000 Series Smart TV Custom Flat Panel
- DENON AVR4000 Integrated Network 7 Channel Receiver w/ Surround Sound
- Blu-ray disk players with Wi-Fi

DINING SALON

- Formal Dining Table with seating for 8 - 10
- Two (2) integrated Wine Coolers
- Fitted Storage

GALLEY

- Sub Zero Stainless Steel 2-door Refrigerator/Freezer with ice and water on door
- Two (2) KitchenAid Stainless Steel Supra Convection Ovens
- KitchenAid Stainless Steel Supra Microwave Oven
- Thermador 5-burner glass Cooktop
- Stainless Steel vented hood with light
- Fire Suppression System for stove
- Stainless Steel Sink with Disposal
- Two (2) Stainless Steel Sinks
- Two (2) Bosch Stainless Steel Dishwashers
- Whirlpool Stainless Steel Ice maker, bin-type
- KitchenAid Stainless Steel Trash Compactor
- KitchenAid Stainless Steel Upper Refrigerator with Lower Freezer Drawer
- Large Pantry
- Coffeemaker
- Espresso Machine
- Various additional countertop appliances
- 15" Flip Down LED HDTV
- Telephone

MASTER STATEROOM

- Full beam stateroom
- King-size berth
- Nightstand
- Dressing table
- Large Walk-in Closet
- Locked Owner's Closet
- Two (2) Private Heads elegantly appointed in marble, separated by a large marble steam shower with glass doors

Entertainment System, which includes:

- Samsung 55" 3D - 1080p low-profile depth TV Pop-Up
- DENON AVR-E400 Network Home Theater Receiver
- Apple TV
- Blu-ray disk players with Wi-Fi

ON DECK VIP STATEROOM

- Full size berth
- Ensuite Bathroom with enclosed shower and marble sink
- Samsung 22" HDTV - LED - 1080p
- Telephone
- Blu-ray disk players with Wi-Fi
- DENON AVR-E400 Network Home Theater Receiver

PORT VIP STATEROOM

- Queen size berth
- Samsung 32" HDTV - LED 5000 Series 1080p with Dolby Digital Plus Dolby Pulse Surround Sound
- Blu-ray disk players with Wi-Fi
- Private marble bathroom with enclosed shower

STARBOARD VIP STATEROOM

- Queen size berth
- Samsung 32" HDTV - LED 5000 Series 1080p with Dolby Digital Plus Dolby Pulse Surround Sound
- Blu-ray disk players with Wi-Fi
- Telephone

- Private marble bathroom with enclosed shower

TWIN GUEST STATEROOM

- Two (2) side-by-side berths separated by a nightstand
- One (1) overhead Pullman berth
- Samsung 22" – HDTV - LED - 1080p
- Blu-ray disk players with Wi-Fi
- Marble bathroom with enclosed shower

CREW QUARTERS

ENGINEER CABIN:

- Telephone
- Sharp TV/VHS
- Sony DSS Sony CD/DVD Player

CREW MESS:

- Lounge with table (converts to bunk)
- Telephone
- Sharp TV
- Sharp CD/DVD Player
- Refrigerator
- Miele Washer/Dryer, stacked
- Alarm Panel (Bilge, Tank CO2)

FLYBRIDGE

- Covered helm station with Full Instrumentation
- Wing Station with cushioned benchseat
- L-shaped Cushioned Seating with Covers and Storage
- Hi/Lo Table with Stainless Steel pedestal
- Four (4) Blue Water Fiddleback Captain's Chairs
- Wet Bar with Sink
- Jacuzzi beneath arch
- Three (3) fixed Chaise Lounges
- Entertainment System
- Liquid Propane Gas Grill
- Sub Zero Refrigerator
- Scotsman Bulk Ice maker

- Nautical Structures 3500-lb. electro-hydraulic Davit
- FUSION Marine MS-IP700i - AM/FM/VHF/USB/AUX/iPod/ iPhone/SiriusXM
- SiriusXM
- JL AUDIO M-Series Speakers

PILOTHOUSE

- 5-panel Windshield with washers/wipers
- Helm Chair, single pedestal mounted
- Raised Lounge with Table
- New Stidd 500XN power helm chair
- Automotive Radio with CD Player
- Telephone
- Chart flat
- Code flags
- FUSION Marine MS-IP700i - AM/FM/VHF/USB/AUX/iPod/ iPhone/SiriusXM
- SiriusXM

AFT DECK

- Swim Platform
- Large varnished teak pedestal table
- Chair/Bench seating for up to 11
- Two (2) stand alone Chairs each with own Ottoman
- Integrated Buffet with solid surface and storage beneath
- Four (4) Blue Water Fiddleback Captain's Chairs
- Wet Bar with inlaid Teak bar top and solid surface back bar with sink
- LG 42" HDTV (flip down behind bar)
- JL AUDIO M-Series Speakers
- Ample storage beneath bar
- Sub Zero under counter Refrigerator
- Whirlpool Gold bulk Icemaker
- DENON AVR X 4000 Integrated Network 7 Channel Receiver

ENGINE / MECHANICAL EQUIPMENT

- Twin MTU 16V2000 Diesel Engines at 1850hp each
- Engine hours Port 6305/ Starboard 6380 (November 24, 2015)
- Generators rebuilt Oct 2015 at 10,500 hours
- Alfa Laval Fuel Transfer System
- MarineAir Systems 4-stage chilled water air conditioning unit rated at 288,000BTU's

- Watermaker Inc. watermaker 1600 gal/day - Brand new 2015
- Fire Station with hose and nozzle
- Lube Oil capacity: 296 gal
- Gray Water capacity: 195 gal
- Black Water capacity: 315 gal

ELECTRICAL SYSTEM

- Two (2) Kilopak Generators, new 2007
- Atlas Shorepower System, new 2007 with array of adapters (accepts all power up to 408)
- Two (2) Shorepower inlets, accepts 408
- Dockside phone/cable jack connection
- Main Engine Start Battery Charger, 60-amp 24V
- Two (2) Generator Start Batteries, 24V
- 12V AC Electrical System
- 24V DC Electrical System

ELECTRONICS & NAVIGATIONAL EQUIPMENT

PILOTHOUSE:

- Danforth Constellation Compass
- Elbex Camera switching unit
- Two (2) ICOM VHF Radios
- Two (2) Brooks and Gatehouse 20/20 multifunction instruments
- Furuno NavNet Radar
- Three (3) Qvei monitors with black box technology
- Qvei monitor input selector screen
- Nav Computer with Nobletech and Tx Weather
- Two (2) DDEC Digital Engine Displays
- Carlisle and Finch Remote Spotlight
- Kahlenberg Whistle Control
- Quantum Bow Thruster Control
- Jastram Rudder Call Indicator
- Jastram Rudder Angle Indicator
- C-Plath Gyro
- Brooks and Gatehouse Hydra 2000 multifunction instrument
- Electronic Engine Controls
- Litton Marine Navipilot 4000 Autopilot
- Joopnautic Stabilizer Fin Control
- Furuno 96-mile Radar Furuno Nav Tex Receiver
- ICOM Single Side Band Radio

- Northstar GPS Receiver
- Ship's Personal Computer
- Hewlett Packard LaserJet Printer Hewlett Packard OfficeJet Phone/Fax/Copier
- Jastram Steering Jog Lever
- B&G Analog Wind Direction
- Jastram Alarm Panel
- Two (2) Hull Potential Meters
- Furuno FA-150 Universal AIS

FLYBRIDGE:

- Quantum Bow Thruster Control
- Jastram Steering Mode Selector
- Two (2) ICOM command Mic VHF Remotes
- B&G Hydra 2000 LCD multifunction navigation aid
- Two (2) DDEC Displays
- Jastram Rudder Angle Indicator
- Jastram Rudder Call Indicator
- Main Engine Start/Stop
- C-Plath Navipilot 4000 Autopilot
- Danforth Constellation magnetic compass
- Furuno NavNet multifunction navigation aid, Radar Plotter, GPS, Sounder and Log
- Carlisle and Finch Remote Searchlight Control
- Garmin 4208 GPS w/maps

WING STATION (Starboard):

- Main Engine Ignition and Controls
- Quantum Bow Thruster Control
- Jastram follow-up Steering
- Jastram Rudder Angle Indicator

SAFETY AND FIRE PROTECTION

All cabins have the following:

- Handheld fire extinguishers
- Personal floatation devices
- Smoke detectors
- Smoke hoods
- Flash indicator lights

Additional equipment:

- Two (2) 12-person Zodiac liferafts (port & starboard)

- Complete ACR Rapid Ditch abandon ship bag
- Thirty-five (35) Adult US Coast Guard approved Type I PFD's
- Four (4) Throw Rings, two (2) with tethered strobes
- Eight (8) Immersion Suits

TENDERS & TOYS

- 2013 19' AB w/150 hp Yamaha w/ custom cover
- New 2015 Yamaha VX1800 waverunners x2 w/ custom covers
- 2 Kayaks
- Deep sea dive air compressor
- Jet Lev
- Freestyle Slide from Flybridge

INTERIOR UPGRADES

- Replaced all interior carpet
- Salon couch re-upholstered
- Salon and dining room chairs re-upholstered
- Replaced all master/guest heads shower and sink fixtures
- Replaced galley cooktop
- Widened engineer stateroom top bunk w/ custom mattress for 2 person accommodations

EXTERIOR UPGRADES

- Jetlev R200 flight pack & power unit
- Replaced Bimini top canvas
- Replaced Bimini top tracks
- Replaced all exterior cushions
- Replaced all eisinglass
- Replaced flybridge grill
- Replaced flybridge Plexiglas
- Refinished all bar tops
- Refinished all tables
- New gas springs in table base ~ flybridge
- Repainted & nonskid swim platform
- Flybridge deployable Freestyle slide

AUDIO & VISUAL EQUIPMENT UPGRADES

- Installed new KVH Tracvision HD7 Tri-Americas satellite dish
- HD TV's - throughout boat
- HD DirecTV boxes - entire boat x 11 receivers
- Blu-ray disk players with Wi-Fi - entire boat

ELECTRONICS / PILOTHOUSE UPGRADES

- New Garmin 4208
- New Furuno Navnet VX2
- Replaced Navigation Computer w/ Upgraded Nobeltec
- Installed Stidd 500XN power helm chair
- Replaced flybridge Jastram selector switch for flybridge
- Replaced Jastram rudder order & angle indicators

ENGINEERING UPGRADES

Port Main Engine

- New Main Crankshaft Bearings
- New Oil Pump
- New Fresh Water Circulating Pump
- New Turbocharger (inboard bank)
- New Fuel Injectors
- Checked and Set all Valves
- Renewed Main Engine Start Batteries

Starboard Main Engine

- New Turbocharger (outboard bank)
- New Fresh Water Circulating Pump
- New Fuel Injectors
- Checked and Set all Valves
- Renewed Main Engine Start Batteries

Here is an overview of the major/scheduled maintenance done to Carte Blanche in the preceding 3 years 2012-2015. These items are in addition scheduled routine maintenance.

5300 Hours : EUP fuel delivery pumps. Both Main engines 5500 Hours: Main bearings, turbos, fresh water pumps, fuel supply pumps, exhaust elbows. Both Main engines 6000 Hours: Injectors, full tune ups. Both Main engines 6150: Replace transmission gear coolers. Both

Main engines 6300 Hours: Maintenance to charge air coolers, replace raw water pumps, service heat exchangers. Both Main engines

Port Generator

- 2000 Hour Major Service
- Rebuilt Oct 2015 at 10,500 hours

Starboard Generator

- 2000 Hour Major Service
- Rebuilt Oct 2015 at 10,500 hours

Hydraulics

- Complete Rebuild of Boat Davit and all hydraulic components
- Rebuilt main electric hydraulic pump
- Replaced with new ~ both main engine driven hydraulic pressure pumps
- Rebuilt bow thruster and all associated hydraulic components
- Rebuilt anchor windlasses and all associated hydraulic equipment
- Rebuilt all hydraulic equipment for the stabilizer system (rams, solenoids and hoses)
- Replaced ALL shipboard hydraulic hoses
- Replaced Hydraulic oil coolers

Propellers

- New Michigan Propellers June 2015

Air Conditioning

- Replaced air handler in the forward crew cabin
- Replaced air handler in the aft deck area, starboard side
- Replaced air handler blowers for the two pilothouse units to increase air flow
- Replaced both air conditioning seawater cooling pumps

Electrical

- Replaced main electronics batteries (dog house)
- Replaced gauges and switches on fly bridge main helm and wing helm
- Replaced shore power connection receptacles, forward and aft
- Replaced capacitors and resistors in Atlass Convertor

Watermakers

- Installed 2 New Sea Recovery 1800 gpd Watermakers Jan 2015
- Replaced 4 membrane elements for the Sea Recovery unit
- Replaced 4 membrane elements for the Watermakers Inc unit
- Rebuilt high pressure pump on the Watermakers unit

- Replaced sea water supply pumps for SR unit and WM unit
- Renewed flanges for both sea chest intake boxes
- Renewed shipboard Brownies Junior II dive compressor with upgraded octo fill
- Renewed pilothouse window seals

Exclusions

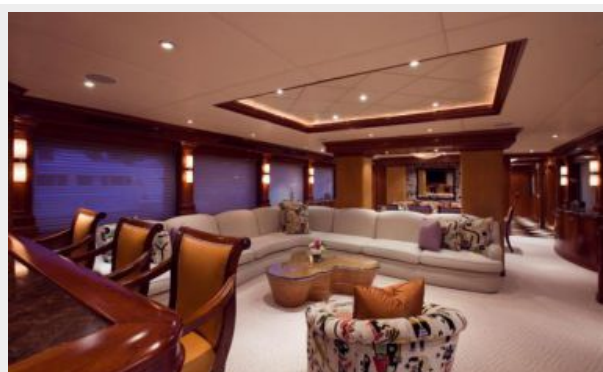
Owner's personal belongings.

Disclaimer

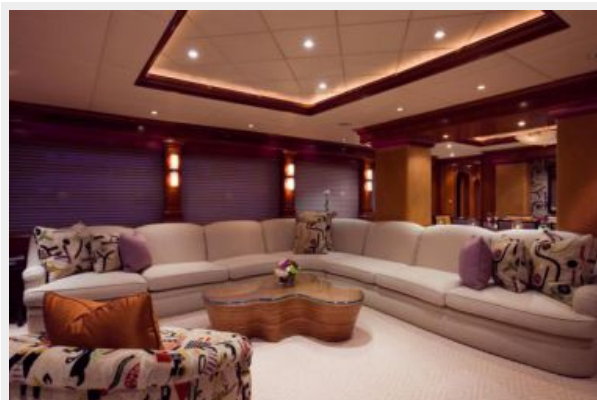
The Company offers the details of this vessel or yacht in good faith but cannot guarantee or warrant the accuracy of this information nor warrant the condition of the vessel. A buyer should instruct his representatives, agents, or his surveyors, to investigate such details as the buyer desires validated. This vessel or yacht is offered subject to prior sale, price change, or withdrawal without notice.

PHOTOS

Main Salon



Main Salon



Main Salon



Main Salon/Dining

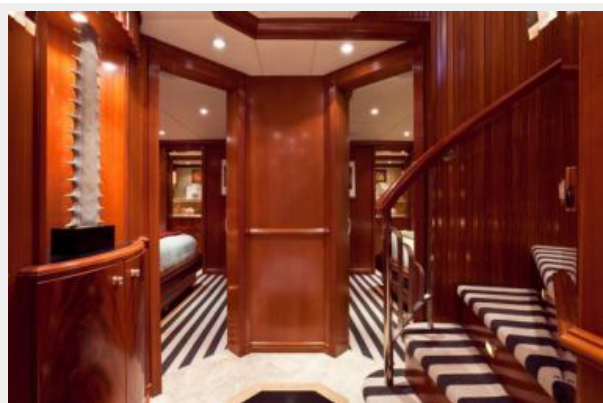
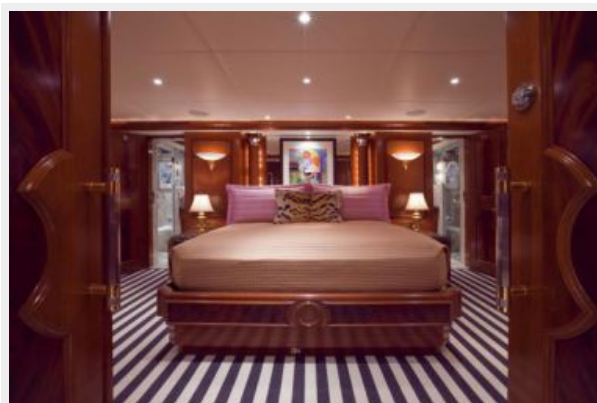
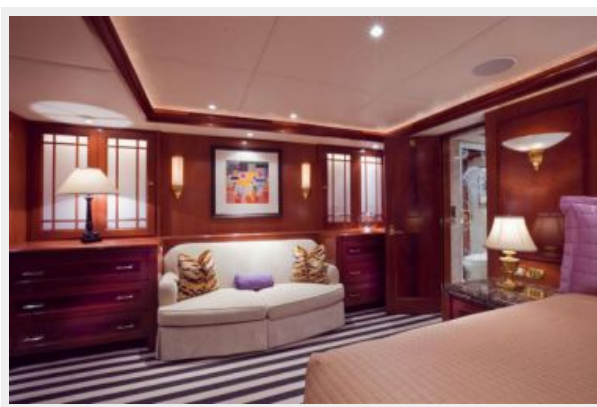


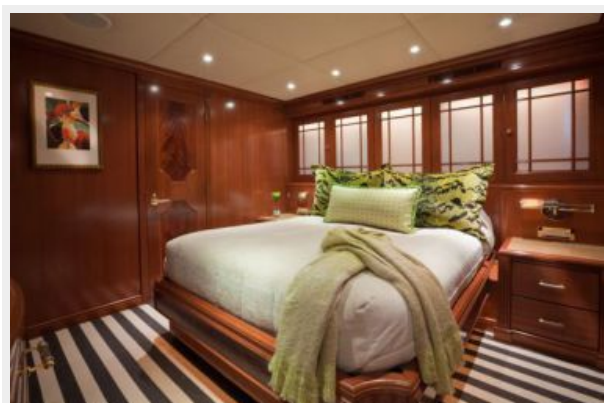
Salon Bar



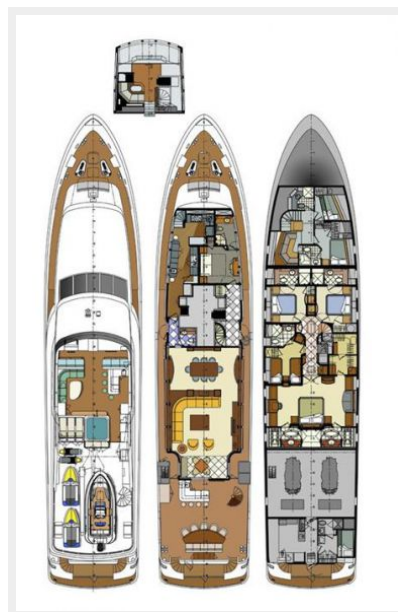
Dining Salon



Guest Foyer**Master Stateroom****Master Stateroom****Master Stateroom****Master Bathroom****On Deck VIP Stateroom**

VIP Bathroom**Guest Stateroom (Port)****Guest Stateroom (Starboard)****Guest Bathroom (Starboard)****Twin Guest Stateroom****Flybridge**

Jacuzzi**Aft Deck****Sundeck****Sundeck****Aft Deck Bar****Aft Deck**

Name Board**Layout**

CONTACTS

Andrey Shestakov, leading yacht broker of the sales department of Shestakov Yacht Sales Inc. Shestakov Yacht Sales Inc., the official representative of the Miami/Fort Lauderdale FL headquarters.

Contact details

Email: **andrey@shestakovyachtsales.com**

Web: shestakovyachtsales.com/en/

Telephones

USA: **+1(954)274-4435**

Office hours

Monday – Saturday: **9:00 - 21:00 EDT**

Sunday: **closed**

Address



Harbour Towne Marina, 850 NE 3rd St,
STE 213, Dania, FL 33004