

I LOVE THIS BOAT — CHRISTENSEN



Builder: CHRISTENSEN

Year Built: 2002

Model: Motor Yacht

Price: PRICE ON APPLICATION

Location: United States

LOA: 145' 0" (44.20m)

Beam: 27' 5" (8.36m)

Min Draft: 6' 9" (2.06m)

Max Draft: 7' 5" (2.26m)

Cruise Speed: 10 Kts. (12 MPH)

Max Speed: 17 Kts. (20 MPH)

Our experienced yacht broker, Andrey Shestakov, will help you choose and buy a yacht that best suits your needs **I Love This Boat — CHRISTENSEN** from our catalogue. Presently, at Shestakov Yacht Sales Inc., we have a wide variety of yachts available on our sale's list. We also work in close contact with all the big yacht manufacturers from all over the world.

If you would like to buy a yacht **I Love This Boat — CHRISTENSEN** or would like help answering any questions concerning purchasing, selling or chartering a yacht, please call **+1(954)274-4435**

TABLE OF CONTENTS

TABLE OF CONTENTS	2
SPECIFICATIONS	5
Overview	5
Basic Information	5
Dimensions	5
Speed, Capacities and Weight	6
Accommodations	6
Hull and Deck Information	6
Engine Information	6
DETAILED INFORMATION	7
Vessel Walkthrough	7
Machinery	9
Generators	9
Communication Systems	9
Navigational Systems	10
Laundry Room	10
Tenders and Toys	10
Deck Equipment	10
Electricity	11
Fire Equipment	11
Security Equipment	11
Safety Equipment	11
Entertainment	11
Performance Specifications	11
Exclusions	12
Disclaimer	12
PHOTOS	14
Main Salon Facing Port Aft	14

Main Salon Facing Forward	14
Main Deck Dining Facing Forward	14
Main Deck Dining and Salon	14
Main Deck Foyer	14
Main Deck Dining	14
Master Stateroom	15
Main Deck Dayhead	15
Master Stateroom Office	15
Master Stateroom	15
Master Stateroom Head	15
Master Stateroom Head	15
VIP Head	16
VIP Stateroom	16
VIP Head	16
VIPStateroom	16
VIP Head	16
Starboard Stateroom	16
Port Stateroom	17
Starboard Twin Head	17
Port Twin Head	17
Galley	17
Main Aft Deck Dining	17
Galley	17
Bridge Aft Deck Dining	18
Bridge Aft Deck Dining	18
Skylounge Dayhead	18
Skylounge	18
Flybridge Steering Station	18
Bridge	18

Aerial	19
Sundeck Facing Forward	19
Bow Sun Pad	19
Sundeck Seating	19
Swim Platform Beach Club	19
Beach Club	19
Lazzerette	20
Engine Room	20
Control Room	20
Captains Cabin	20
Captains Head	20
Running with Tender	20
Running Port	21
Toys	21
Stern	21
Name Boards	21
Anchored Starboard	21
Running Port	21
Layout	22
CONTACTS	23
Contact details	23
Telephones	23
Office hours	23
Address	23

SPECIFICATIONS

Overview

Featured in the Upcoming Yachts Miami Beach Boat Show February 16-20. At 415 Gross Tons GT ITC this yacht has more interior Volume then most 50 meter class tri decks with excellent outdoor spaces and a enormous cockpit for a Beach Club and toys. Fishing and diving is what this boat was set up to do around the world with a 4000 mile range and systems that are designed and engineered for long Ocean going cruising with confidence. With Brand New MTU power installed at Christensen in 2012 with a major refit the new 8V 4000 engines are de rated at 1800 RPM and 1185 Hp for continuous duty 24/7 at 100% power. These new engines have a 25,000 to 30,000 hour Life span before TBO. "I Love This Boat" has more volume then anything in its class . You have to tour the boat personally to understand the true Volume of space , the quality of construction as well as the layout and successful pedigree of the Christensen product line.

Basic Information

Category: Motor Yacht

Sub Category: Tri-Deck

Model Year: 2002

Year Built: 2002

Refit Year: 2012

Refit Type: Installed Brand New Engines, replaced Head system to new style, minor updates to the AV system

Country: United States

Registration #: 1250344

Coast Guard #: 1250344

Vessel Top: Hardtop

Fly Bridge: Yes

Cockpit: Yes

Dimensions

LOA: 145' 0" (44.20m)

LWL: 130' 6" (39.78m)

Beam: 27' 5" (8.36m)

Min Draft: 6' 9" (2.06m)

Max Draft: 7' 5" (2.26m)

Speed, Capacities and Weight

Cruise Speed: 10 Kts. (12 MPH)

Cruise Speed RPM: 1050 Kts.

Cruise Speed Range: 4000

Max Speed: 17 Kts. (20 MPH)

Max Speed RPM: 1800 Kts.

Gross Tonnage: 415 Pounds

Water Capacity: 2000 Gallons

Fuel Capacity: 11500 Gallons

Fuel Consumption: 25 Gallons

Accommodations

Total Cabins: 5

Sleeps: 10

Total Heads: 7

Captain Cabin: True

Crew Cabin: 4

Crew Berths: 8

Crew Sleeps: 8

Crew Heads: 4

Hull and Deck Information

Hull Material: Fiberglass

Deck Material: Teak

Hull Configuration: Semi-Displacement

Hull Color: Matterhorn White

Hull Finish: Fiberglass

Hull Designer: Christensen Shipyard

Exterior Designer: Christensen Shipyard

Interior Designer: Paola Smith

Engine Information

Engines: 2

Manufacturer: MTU

Model: 8V4000 M60

Engine Type: Inboard

Fuel Type: Diesel

DETAILED INFORMATION

Vessel Walkthrough

This vessel represents a fully equipped 145' Christensen with several upgrades that have become a trademark of the Christensen yacht family. She features an on-deck master stateroom with office, and four staterooms located midship on the lower deck, all with spacious ensuite heads. Luxurious high-gloss painted wood with recessed lighting is featured throughout. With a large aft deck, spacious sky lounge for entertaining and sun deck with Jacuzzi tub and bar, she is ideal for entertaining family and friends, or for charter.

Main Salon Entering the main salon through the aft deck, one quickly realizes the extensive amount of space for guests to relax and enjoy themselves in. An exquisite combination of wood, fabrics, stones and carpet are featured throughout. The seating area offers a large sofa, love seat and two chairs centered around a large coffee table of etched glass and marquetry. The AV entertainment system is complete with Crestron control and Lutron "One Touch" electrical lighting. To create an open concept feel, custom madrona wood columns flank a glass panel etched with shell detail; column tops feature metal palm fronds separating salon and dining area without blocking them off from each other.

Dining Area The formal dining area features a huge rectangular table custom made in Holland, which comfortably fits 10 adults in large, plush seats. Port and starboard, buffet cabinets offer ample storage for fine china, cutlery and tableware. A custom painting between the galley and dining area can be lowered to reveal a glass window allowing guests to choose to see through to the galley or for privacy during meals.

Galley The galley, just forward of the dining area and to port, features light-tone marble and neutral creme cabinetry done in a tasteful country-French style decor, giving the galley a comfortable, inviting atmosphere. The custom hood above the stove features a custom light blue "under the sea" tile design. With a large window that allows an abundance of sunshine, light granite counters throughout, two large sinks and plenty of storage, this galley is a Chef's dream. Additional features include a built-in Miele coffee espresso machine, counter top grill, Alto-Shaam smoker, and sizeable pantry just forward of the galley with tons of refrigeration and freezer space. Cooking Equipment: (1) Viking Cooktop - RVEC3456BSB 45" Electric (1) Viking Oven - VEDO1302SS 30" Professional Ultra-Premium Select Built-in Thermal Convection Electric Double Oven (1) Miele Counter Top Grille - 15" CS 1322 BG Electric Barbecue Combiset (1) Alto Shaam – 767-SK-III Deluxe Control Smoker (1) Miele Coffee/Espresso Machine – CVA 610 Refrigeration: (2) Sub-Zero Refrigerators - 601R (2) Sub-Zero Double Drawer Refrigerators - 700BR (2) Sub-Zero Freezers - 601F Dishwasher: (2) Miele Dishwashers Trash: (1) Kitchen Aid Trash Compactor - KUCC161GSS1

Main Deck Foyer Starboard to the galley is the main deck foyer with an intricate sole detail comprised of hand-chipped glass pieces and madrona wood inlays that are in turn arranged on a mirrored surface, lending depth and sparkle to the overall design. Spiral glass staircases lead to the main guest area on the lower deck and to the sky lounge on the bridge deck. The day head features a glass sink with toilet, and custom artwork on the walls.

Master Stateroom The full-beam master stateroom, located forward on the main deck, features an office to starboard, vanity, king size bed, sofa, and two huge walk-in closets with a washer/dryer. High-gloss painted surfaces and natural wood highlight the room, and the king-size bed is framed with silk bulkhead panels,

headboards and accessories which soften the look and flow of the room. The ensuite head is adorned with hand chipped glass detail throughout, towel warmers, and granite counters inlaid with fiber optics that, when turned on, glow from beneath. The walk-in shower separates the "his" from "hers" side and boasts a waterfall feature that literally spills water out so gently and smoothly it's the envy of many a yacht owner. Refrigeration: (1) Sub-Zero Double Drawer Refrigerator - 700BR Laundry: (1) Stacked-Compact Size Washer/Dryer - LTE5243DQ2 **Guest Cabins** Located midship on the lower deck is a guest foyer with marble flooring and chipped glass detail, with four guest staterooms forward of the engine room. The two queen cabins are located aft to port and starboard with plenty of space allowing for guests to walk around the beds, and the two twin cabins are located forward with beds large enough to accommodate adults. All four cabins boast spacious ensuite heads with large showers, ample counter space and intricate marble detail. Silk panels and high gloss painted wood are featured throughout the cabins.

Skylounge Located on the bridge deck, the sky lounge features several custom features including reflective zodiac symbols on the shimmering overheads. The sky lounge also features a fully equipped bar with etched glass detail, and four large seats to accommodate guests. Plush carpet is located throughout, as well as an entertainment center with surround sound cinema and a 50" plasma TV. A large seating area and coffee table create an inviting space for guests to relax and enjoy themselves. There is a day head just forward of the sky lounge with a glass sink, marble floor and etched glass detail. Refrigeration/Freezer: (1) Sub-Zero Under

Counter Refrigerator (1) Whirlpool Ice Maker - 2313856A **Skylounge Aft** Aft of the sky lounge is a covered deck with a large circular table for 10 to enjoy al fresco dining. To port and starboard aft are small, intimate seating areas for private occasions. A large wet bar with sink, refrigerator and ice maker are also featured to starboard of the dining table. Refrigeration/Freezer: (1) Sub-Zero Under Counter Refrigerator (1) Whirlpool Ice Maker - 2313856A **Bridge** Forward of the sky lounge is the pilot house, adorned in a soft light blue tone with beautiful teak flooring. Two

captain's chairs, a settee and table offer ample space for crew and guests to enjoy cruising to new destinations. The Captain's cabin with ensuite head is located just off the bridge for easy access during long trips and for additional comfort and privacy from the crew area. **Sun Pad** Forward of the bridge is an oversized sun pad that will accommodate four or more adults. Speakers on either side of the sun pad allow guests to enjoy music while relaxing on the bow.

Sun Deck The sun deck is accessed midship starboard side via a wide staircase from the bridge deck. A sizable Jacuzzi hot tub easily sits 10 adults and the large bar with six barstools features a Rum Runner machine for constant frozen beverage service. There is ample guest seating, and two captains chairs are forward for steering from the top deck. One of the yacht's two tenders plus two PWC Seadoos are stored aft of the hard top. There is also a large chef's grill to starboard, and the davit is located port aft. Refrigeration/Freezer: (1) Sub-Zero Under Counter Refrigeration

(1) Petite Sorbet Machine - D115R **Aft Deck** The Aft Deck offers a covered, spacious area for relaxing, dining and entertaining. With a large teak table with seating for 10 guests, and a fully equipped bar with three swivel seats, the aft deck is a great space for family and friends.

Boarding the yacht can be done via port and starboard boarding gates, and the swim platform and/or bridge deck can both be accessed via a staircase located on the starboard side.

Refrigeration/Freezer: (1) Sub-Zero Under Counter Refrigerator (1) Whirlpool Ice Maker **Swim**

Platform The Swim Platform "Beach Club" is an enormous space ideal for lounging or used as a base for water sports activities. Two large umbrellas provide ample shade or can be easily

removed for full sunshine. Access to the engine room is also located here. **Engine Room** With beautiful fire engine red engines, gold-tone diamond plate, air conditioning, control room with office, and a sizable lazzerette with dive compressor, the engine room area is surely one-of-a-kind. **Crew Area** The crew area is located forward of the main guest area, with three upper/lower cabins for up to eight crew members (including the double in the Captain's cabin). There is a sizable crew table with a small galley, pantry, TV, laundry room and access to the main guest area via a hidden door. Cooking Equipment: (1) GE Microwave - Profile Refrigeration/ Freezer: (1) Upright Sub-Zero Refrigerator/Freezer - 700TC/700TCI

Machinery

Main Engines: Engine Type: (2) MTU 8V 4000M60, rated 1140 BHP @ 1800 RPM each and were installed by Christensen Shipyard in 2012 and are under fully warranty until 2017 Gear Boxes for Main Engines: (2) Twin Disk model DD6650, 3:21:1 ratio

Propellers: Bruntons 55" x 45", 5-blade, NiBrAl propellers Other Machinery: Watermakers: (2) Village Marine Tec PW 200 at 2000 Gal per day (15,140 liters)

Stabalizers: Naiad 510 with Datum Three-Term Digital Control

Bow Thruster: American Bow Thruster 24 TRAC Dual Prop 100HP

Fuel Separator: Alfa Laval (MIB-3035-13) Fuel Filtration: Racor 75/100 Max-30 Turbine Style

Bilge Water Filtration: Nelson Industries Bilge Boy

Sewage System: (1) Fast Systems Model MX-15 Biological Aerobic Type

Fresh Water System: ChemFree C-10 Ozone Generator water purifier w/Aqua City carbon media filter +22

Steering System: Primary - Jastram PSM- Engine driven; Secondary - Janstram PSM- Electro-hydraulic

Generators

#1 Northern Light MP668H KW-99 RPM-1800 Hours - 11,754 #2 Northern Light MP668H KW-99 RPMS-1800 Hours - 11,198 #3 Northern Light MP445HKW-65RPM- 1800 Hours - 14,666

Communication Systems

Satcom - Mini-VSAT (KVH V7) Voice/Data (2 VOIP Phone Lines/Internet) Cell - 4G LTE Data (Cradlepoint Modem COR1BR600) (Internet) Cell - 4G Voice (Tellular 1C02A167) (1 Cell Line)

Cell - Data/Voice Signal Booster (Wilson DT4G 460101) VHF -Standard Horizon Intrepid GX1270S (Bridge, Flybridge, Captain's Cabin; VHF remotes "piggyback" off each radio at Port Wingstation, Starboard Wingstation, and Galley respectively.) VHF -Furuno FM-8500 (Bridge) MF/HF -Furuno DSC-60 Watch Receiver (Bridge) MF/HF -Furuno FS-1562-15 SSB (Bridge) Safety/Weather/Navigation – Furuno NX-500 NAVTEX Receiver (Bridge) GMDSS - Furuno INMARSAT-C Mobile Earth Station FELCOM 12 (Bridge) Loud Hailer – SEA 857 (Bridge, Flybridge, Swim Platform) Router/Firewall -Cisco SA520W with 3 Wireless Access Points Ship's Computers -Dell Desktop (Captain's Cabin, Master Study, Control Room) Telephone -Panasonic KX-T7433

Navigational Systems

X Band Furuno FR 2115B Range 96 S Band Furuno FR 2135B Range 96 Auto Pilot - Anschutz Pilotstar Gyro Compass - Anschutz Gyro Star Compass - Cassens and Plath Depth Sounds – B and G GPS- (2) Garmin 5208 Plotting Software - Nobletech Trident Sonar - Furuno Searchlight CH-250 Wind/Speed/Depth - B&G Hydra 2000

Laundry Room

(2) Maytag Neptune (Crew)

(1) Whirlpool Thin Twin Washer and Dryer (Master)

Tenders and Toys

(1) 18' Nouvarania with 150hp Yamaha outboard (1) 15' Nouvarania with 40hp Yamaha outboard
(2) PWC Seadoos

Deck Equipment

Anchor Windless System - 2 X Muir 11000 electric

Anchors - 2 Type - 280 kg galvanized steel

Anchor Chain and Rode Length - 650' + 450' 5/8 HIGH TEST STEEL

Deck Capstans - X 2 swim step type electric

Main Tender Davits - 22'Christensen Capacity 5000lbs

Cranes/Davits Nautical Structure Capacity 2500lbs

Accommodation Ladders - Marquip tide rider Pasarella (Sanguineti Custom)

Electricity

Hyak Electronics Converter - 480/380/240/208 Phase 3 or 1 Hz-50 OR 60

Batteries:

Main Engine Starting 24 Electric Battery Charger

Generator Starting 24 Electric Battery Charger

General Service 24 Electric Battery Charger

Fire Equipment

Fire Control System: Main Fire Pump 5hp 110 GPM (6) Fire Stations with 50' 1.5" hoses with Brass nozzles Back up Fire/bilge Pump Fixed System: Engine Room - FM200 System Galley - Badger Rangeguard Wet Suppression System Fire Extinguishers: (26) Located throughout Yacht Alarms: General Alarm Smoke Alarm linked to Ship's monitoring system

Security Equipment

Security Equipment - CCTV System: Elebex EXC 90 Cameras (6) Elebex EXX 9205 Matrix Controller Cameras: (5) Located on Main deck, Flybridge and engine room Monitoring System: Proface GLL Monitors; Software - HYAK Electroworks (Bridge(Main),Crew Mess, and Control Room Motion Detectors: (6) Located on the Aft Deck and Fore Deck Ship Safes: (3) Located in Owners, Captain and Chief Officer's Cabin

Safety Equipment

Life Rafts: (3) 10 Man Zodiac SOLAS Life Rings: (4) Life Rings (2 with a light) EPIRBS: (1) GPIRB, (1) SART

Entertainment

TV Satellite Antenna: Seatel model 4004 TVRO stabilized 40" antenna with a DAC 2202 controller

Performance Specifications

RPM GPH Load % Speed Kts

650	3	16	6.7
700	3	17	7.0
800	4	18	7.9
900	6	20	8.7
1000	7	23	9.5
1100	11	26	10.1
1200	15	36	10.8
1300	23	49	11.6
1400	29	63	12.3
1500	34	71	12.7
1600	39	74	13.8
1700	50	86	14.8
1800	58	94	15.1

Exclusions

Owner's personal belongings.

Disclaimer

The Company offers the details of this vessel or yacht in good faith but cannot guarantee or warrant the accuracy of this information nor warrant the condition of the vessel. A buyer should instruct his representatives, agents, or his surveyors, to investigate such details as the buyer desires validated. This vessel or yacht is offered subject to prior sale, price change, or withdrawal without notice.

PHOTOS

Main Salon Facing Forward



Main Salon Facing Port Aft



Main Deck Dining and Salon



Main Deck Dining Facing Forward



Main Deck Foyer



Main Deck Dining



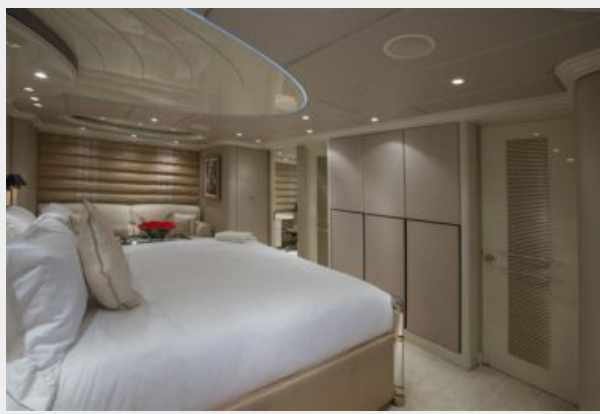
Main Deck Dayhead



Master Stateroom



Master Stateroom



Master Stateroom Office



Master Stateroom Head



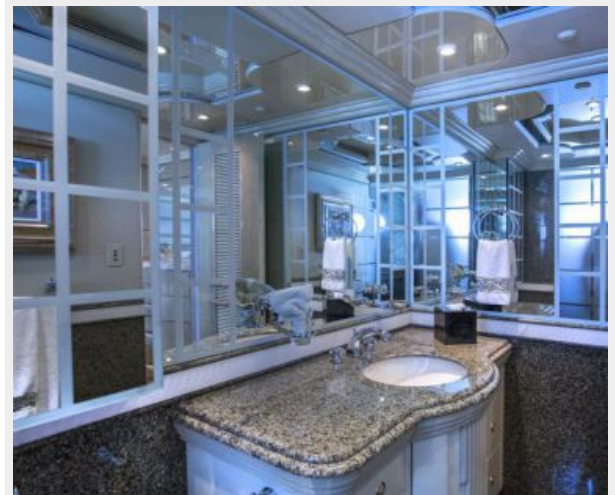
Master Stateroom Head



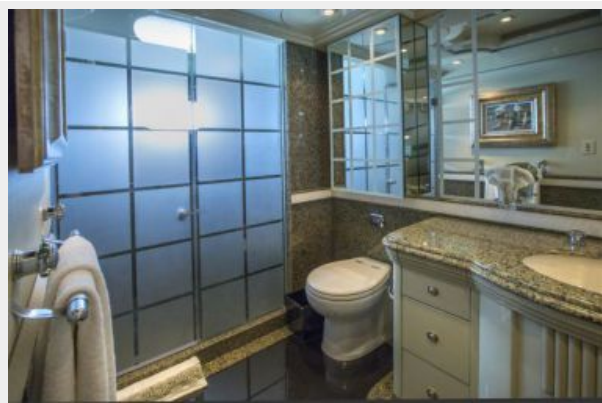
VIP Stateroom



VIP Head



VIP Head



VIP Stateroom



VIP Head



Starboard Stateroom



Starboard Twin Head



Port Stateroom



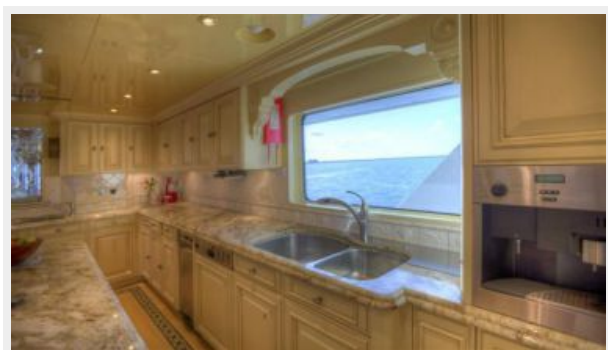
Port Twin Head



Galley



Galley



Main Aft Deck Dining



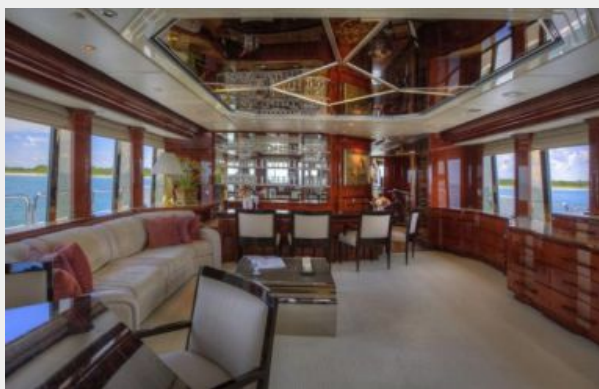
Bridge Aft Deck Dining



Bridge Aft Deck Dining



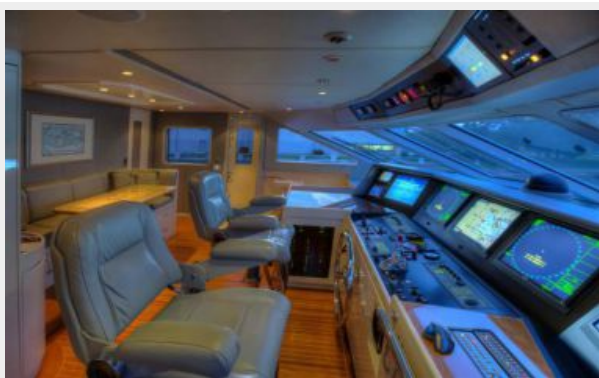
Skylounge



Skylounge Dayhead



Bridge



Flybridge Steering Station



Aerial



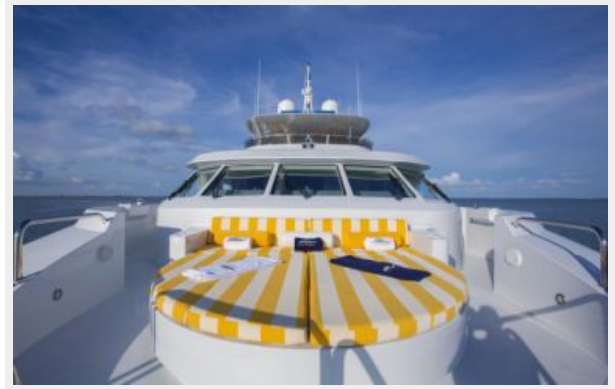
Sundeck Facing Forward



Sundeck Seating



Bow Sun Pad



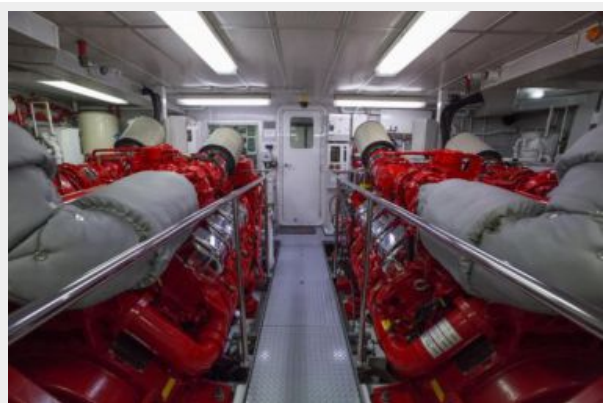
Beach Club



Swim Platform Beach Club



Engine Room



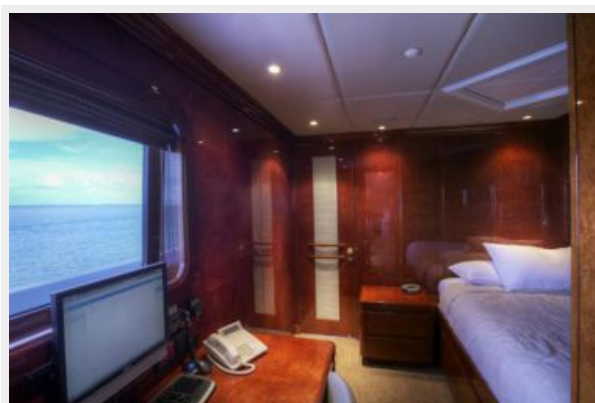
Lazzerette



Control Room



Captains Cabin



Captains Head



Running with Tender



Running Port



Toys



Stern



Name Boards



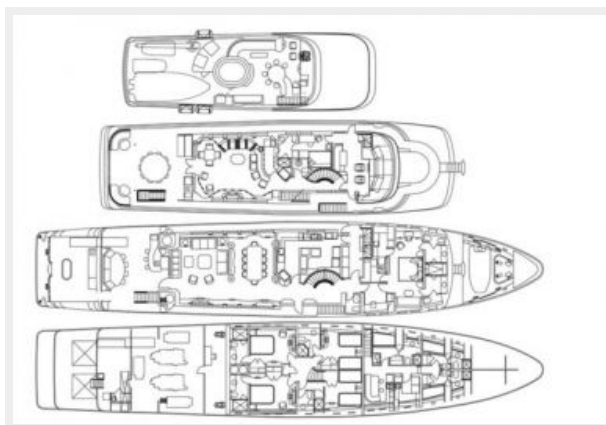
Anchored Starboard



Running Port



Layout



CONTACTS

Andrey Shestakov, leading yacht broker of the sales department of Shestakov Yacht Sales Inc. Shestakov Yacht Sales Inc., the official representative of the Miami/Fort Lauderdale FL headquarters.

Contact details

Email: **andrey@shestakovyachtsales.com**

Web: shestakovyachtsales.com/en/

Telephones

USA: **+1(954)274-4435**

Office hours

Monday – Saturday: **9:00 - 21:00 EDT**

Sunday: **closed**

Address



Harbour Towne Marina, 850 NE 3rd St,
STE 213, Dania, FL 33004