

THE SECRET — BERTRAM



Builder: BERTRAM

Year Built: 1985

Model: Sport Fisherman

Price: PRICE ON APPLICATION

Location: United States

LOA: 54' 0" (16.46m)

Beam: 16' 11" (5.16m)

Min Draft: 5' 2" (1.57m)

Cruise Speed: 24 Kts. (28 MPH)

Max Speed: 30 Kts. (35 MPH)

Our experienced yacht broker, Andrey Shestakov, will help you choose and buy a yacht that best suits your needs **The Secret — BERTRAM** from our catalogue. Presently, at Shestakov Yacht Sales Inc., we have a wide variety of yachts available on our sale's list. We also work in close contact with all the big yacht manufacturers from all over the world.

If you would like to buy a yacht **The Secret — BERTRAM** or would like help answering any questions concerning purchasing, selling or chartering a yacht, please call **+1(954)274-4435**

TABLE OF CONTENTS

TABLE OF CONTENTS	2
SPECIFICATIONS	4
Overview	4
Basic Information	4
Dimensions	4
Speed, Capacities and Weight	5
Accommodations	5
Hull and Deck Information	5
Engine Information	5
DETAILED INFORMATION	6
Accommodations	6
Galley	6
Deck & Hull	7
Fly Bridge	8
Electronics	9
Mechanical	10
Notes	10
Disclaimer	11
Exclusions	11
Disclaimer	11
PHOTOS	12
Custom Tower	12
Side Profile	12
Flybridge	12
Cockpit	12
Aft View	13
Cockpit Forward	13
Transom	13

Foredeck Top View	13
Cockpit Top View	13
8 Man Life Raft	13
Flybridge Fwd Seating	14
Controls	14
Helm Seats	14
Electronics	14
Foredeck	14
Standup Storage	14
Guest Stateroom	15
Standup Equipment	15
VIP Stateroom	15
Master Head	15
Master Stateroom	16
Galley Forward	16
Galley Aft	16
Salon Starboard	16
Salon Forward	16
Entertainment Center	16
Salon Settee	17
Salon Port	17
Engine	17
CONTACTS	18
Contact details	18
Telephones	18
Office hours	18
Address	18

SPECIFICATIONS

Overview

Legendary Ride and Recent Refit!

The Bertram 54 is widely regarded to be one of the best sea riding and fish raising boats in its class, ever. This one features a 3 stateroom layout, enormous cockpit, beautiful teak joinery throughout, and custom tuna tower. Vessel had a significant refit in 2007, has only about 500 hours SMOH, and is turnkey ready in nice condition. Owner is highly motivated and priced vessel incredibly low to sell her quickly. If you are looking for a top quality convertible to affordably hunt top fish or cruise the islands, this boat is ideal.

Basic Information

Category: Sport Fisherman

Sub Category: Convertible

Model Year: 1985

Year Built: 1985

Refit Year: 2007

Country: United States

Coast Guard #: 686937

Vessel Top: Full / Tuna Tower

Fly Bridge: Yes

Cockpit: Yes

Dimensions

LOA: 54' 0" (16.46m)

Beam: 16' 11" (5.16m)

Min Draft: 5' 2" (1.57m)

Speed, Capacities and Weight

Cruise Speed: 24 Kts. (28 MPH)

Max Speed: 30 Kts. (35 MPH)

Displacement: 75000 Pounds

Water Capacity: 250 Gallons

Holding Tank: 50 Gallons

Fuel Capacity: 1200 Gallons

Accommodations

Total Cabins: 3

Total Berths: 5

Sleeps: 6

Total Heads: 2

Hull and Deck Information

Hull Material: Fiberglass

Hull Color: White

Engine Information

Engines: 2

Manufacturer: Detroit Diesel

Model: 12v71TI

Engine Type: Inboard

Fuel Type: Diesel

DETAILED INFORMATION

Accommodations

Teak joinery throughout

Carpeting throughout (2007)

New soft goods (2007)

Marble floors in all heads (2007)

New mattresses (2007)

Master stateroom (island queen, port)

Master ensuite head with stall shower

VIP stateroom (v-berth, forward)

VIP sink and vanity in stateroom

Guest stateroom (over/under twins, starboard)

Guest ensuite/day head with stall shower

Companionway closet (plumbed for laundry)

Salon sofa ("U" shaped, 2007)

Salon electric hi-lo table with dining extensions

Salon wetbar and abundant storage cabinetry

Salon entertainment center

Salon large custom padded chair

Galley

Pass through counter to salon

Marble countertop (2007)

Marble floor (2007)

Whirlpool SS full size refrigerator (2007)

Whirlpool 4 burner sealed stovetop (2010)

Quasar convection/microwave oven

Panasonic microwave oven

GE trash compactor

SS single basin with faucet and soap dispenser

Teak cabinetry with custom wicker panels

Deck & Hull

Underwater lights (2007)

F/G swim platform (2007)

Tuna door

Cockpit bolsters

Cockpit fiberglass sole

Cockpit area rug

Fighting chair mounting plate

Under gunnel storage lockers (2)

Cockpit removable boarding step

Lee triple spreader tournament outriggers (2007)

Lee center outrigger

Lee gunnel rodholders (8)

Lee wing rodholders (4)

Steps to cabin/engine room access

Premium ladder to flybridge

Cockpit standup freezer

Cockpit standup draining box

Cockpit standup sink/prep station

Cockpit standup storage

Cabinet with tackle drawers

Cockpit Bose speakers

Aluminum railing bow to midship

Custom FG pulpit (2007)

Danforth anchor with chain & rode

Ideal windlass

Additional anchor brackets

Black & gold striping (2007)

Fly Bridge

FG hardtop

3-sided eisenglass enclosure (2007)

Murray Brothers pedestal helm chairs (3)

Rocket launcher (6 rodholders)

Forward "L" shaped bench seating

Storage under benches

Rod storage lockers (2)

Tundra refrigerator

JL Audio and Poly Planar speakers

Overhead electronic boxes (2)

FG console

Spreader lights (4)

Viking 8 man life raft system (2007)

Custom full tuna tower

Electronics

ACR spotlight

Ritchie compass (2)

Garmin 5212 touchscreen (2007)

Engine room camera (2007)

ICOM IC-M504 VHF radio

ACR EPIRB

Poly Planar VHF speaker

Robertson AP100 autopilot

Datamarine depth finder

Datamarine speed/Navigator

Dytek temperature

Raytheon Raystart 390 GPS

Clarion M475 CD/stereo

Northstar 800 Loran C Navigator

Datamarine Int'l Sea Inc SSB radio

Hailer system

Furuno radar and open array (inop)

Glendinning engine synchronizer

Satellite TV system

DirecTV receiver (salon)

LG flatscreen TV (2007)

Panasonic S53 CD/DVD

Sony home theater speaker system (salon, 2010)

Sony DVD/stereo system (salon, 2010, ipod/bluetooth)

ICOM IC-M304 VHF radio (salon)

Mechanical

12v71TI Detroit Diesels 900hp (500 hrs SMOH per owner)

Onan 17kW generator/sound box (2008, about 1000 hours)

Onan 15kW generator/sound box (about 4100 hours)

New mufflers & exhaust hoses (2008)

Glendinning engine synchronizer

Morse type controls (2 stations)

Hydraulic steering

Buell-Strombos SS dual trumpet horn

Trim tabs

50amp shore power (2)

Dockside water (2)

Dripless packing

Battery chargers

Compressor (2008)

Halon fire system

Water heater

Ideal windlass

Cruisair A/C systems

Cockpit washdowns

Notes

Excludes owner personal items

Total hours: 3182

Disclaimer

The company and agent offers the details of this vessel in good faith but cannot guarantee or warrant the accuracy of this information nor warrant the condition of the vessel. A buyer should instruct his surveyors to investigate such details as the buyer desires validated. This vessel is offered subject to prior sale, price change, or withdrawal without notice.

Exclusions

Owner's personal belongings.

Disclaimer

The Company offers the details of this vessel or yacht in good faith but cannot guarantee or warrant the accuracy of this information nor warrant the condition of the vessel. A buyer should instruct his representatives, agents, or his surveyors, to investigate such details as the buyer desires validated. This vessel or yacht is offered subject to prior sale, price change, or withdrawal without notice.

PHOTOS

Side Profile



Custom Tower



Flybridge



Cockpit



Aft View



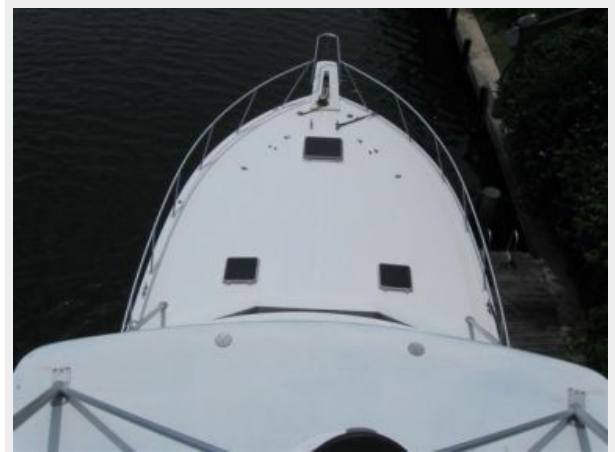
Cockpit Forward



Transom



Foredeck Top View



Cockpit Top View



8 Man Life Raft



Flybridge Fwd Seating



Controls



Helm Seats



Electronics



Foredeck



Standup Storage



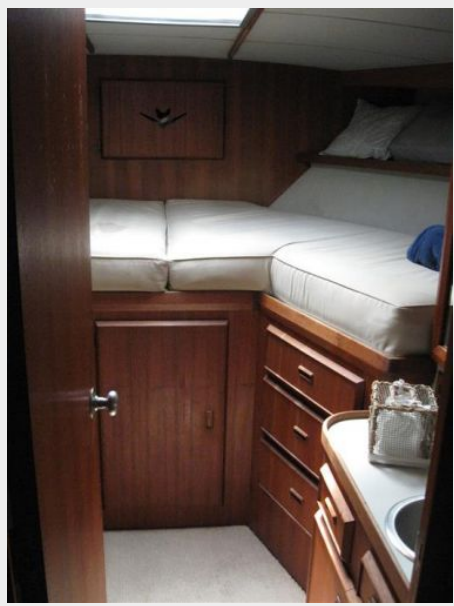
Standup Equipment



Guest Stateroom



VIP Stateroom



Master Head



Master Stateroom



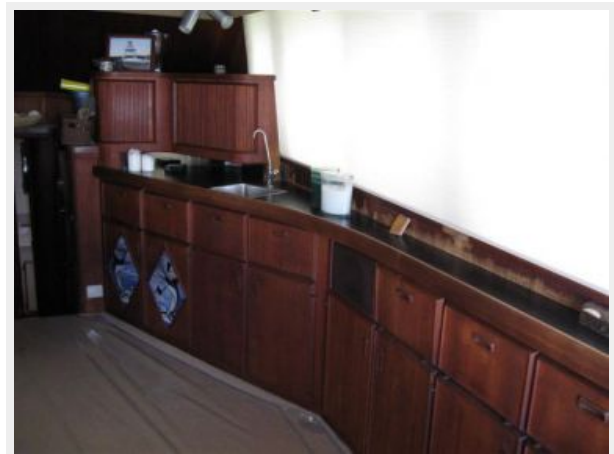
Galley Forward



Galley Aft



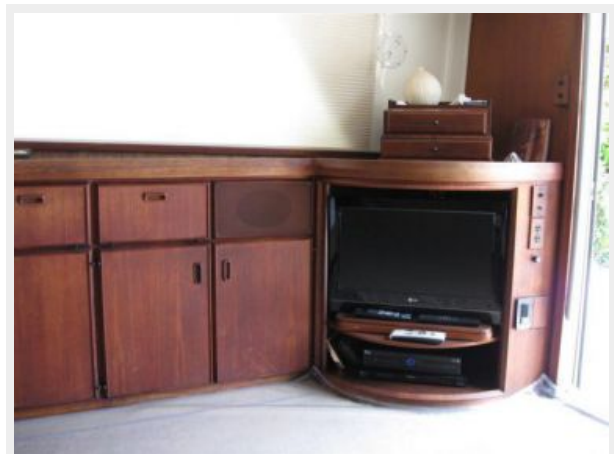
Salon Starboard



Salon Forward



Entertainment Center



Salon Settee



Salon Port



Engine



CONTACTS

Andrey Shestakov, leading yacht broker of the sales department of Shestakov Yacht Sales Inc. Shestakov Yacht Sales Inc., the official representative of the Miami/Fort Lauderdale FL headquarters.

Contact details

Email: andrey@shestakovyachtsales.com

Web: shestakovyachtsales.com/en/

Telephones

USA: +1(954)274-4435

Office hours

Monday – Saturday: **9:00 - 21:00** EDT

Sunday: **closed**

Address



Harbour Towne Marina, 850 NE 3rd St,
STE 213, Dania, FL 33004