

CAT NAP III — CARVER



Builder: CARVER

Year Built: 2005

Model: Motor Yacht

Price: PRICE ON APPLICATION

Location: United States

LOA: 46' 0" (14.02m)

Beam: 14' 11" (4.55m)

Min Draft: 3' 7" (1.09m)

Our experienced yacht broker, Andrey Shestakov, will help you choose and buy a yacht that best suits your needs **Cat Nap III — CARVER** from our catalogue. Presently, at Shestakov Yacht Sales Inc., we have a wide variety of yachts available on our sale's list. We also work in close contact with all the big yacht manufacturers from all over the world.

If you would like to buy a yacht **Cat Nap III — CARVER** or would like help answering any questions concerning purchasing, selling or chartering a yacht, please call **+1(954)274-4435**

TABLE OF CONTENTS

TABLE OF CONTENTS	2
SPECIFICATIONS	6
Overview	6
Basic Information	6
Dimensions	7
Speed, Capacities and Weight	7
Accommodations	7
Hull and Deck Information	7
Engine Information	7
DETAILED INFORMATION	8
Salon	8
Galley	8
Master Stateroom	8
Master Head	9
VIP Stateroom	9
Third Stateroom	10
Guest Head	10
Helm	10
Flybridge	11
Electronics	11
Electrical System	11
Mechanical Equipment	12
Engine Room	12
Aft Deck	12
Foredeck	13
Hull	13
Broker's Remarks	13
Exclusions	13

Disclaimer	13
Exclusions	13
Disclaimer	14
PHOTOS	15
Salon & Dinette	15
Breakfast Bar	15
Breakfast Bar Storage	15
Salon Sleeper Sofa - STBD	15
Port Salon	15
Bottle Storage	15
Dinette	16
Barrel Chairs & Ottomans	16
Breakfast Bar & Galley	16
Galley	16
Galley	16
Galley	16
Galley Floor Storage	17
Salon Entertainment Center	17
Salon Entertainment Center	17
Salon Entertainment Stereo - Sony	17
Electrical Distribution Panel	17
Salon CC TV Camera	17
Guest Head	18
Guest Shower Stall	18
VIP Stateroom Berth	18
VIP Stateroom Side Cabinets	18
VIP Stateroom TV & DVD	19
VIP Stateroom Closet	19
Third Stateroom Entry Door	19

Third Stateroom Storage Lockers	19
Washer/Dryer Combo	20
Third Stateroom	20
Master Statroom Drawers	20
Master Statroom TV	20
Master Statroom Stereo/DVD	20
Master Statroom Berth	20
Master Statroom Side Table	21
Master Statroom Side Table	21
Master Head Vanity	21
Master Head Shower Stall	21
Master Statroom Storage Closet	22
Master Statroom Closet	22
Engine Access Hatch	22
Helm Seats	22
Helm Port	22
Helm	22
Helm & Excellent Enclosure	23
Helm Stbd	23
VHF Radio	23
Raymarine GPS/Plotter/Radar/Sonar	23
Bridge Stereo & Docking Station	23
Autopilot	23
Bridge Dinette Lounge	24
Enclosures in Excellent Shape	24
Steps to Flybridge	24
Aft Deck Wet Bar & AC	24
Flybridge Storage & Countertop	24
Aft Deck Bench Seat & Ladder	24

Boarding Ladder fits Port and Stbd	25
Hardtop Access Ladder	25
19 KW Kholer Generator	25
Engine Room Equipment	25
Engine Room Equipment	25
FCI Watermaker Equipment	25
FCI Watermaker	26
Stbd Engine	26
Engine Recently Serviced - 5/14	26
Engine Room Equipment	26
Port Engine	26
Engine Model	26
Engine Room	27
Windlass & Anchor	27
Swim Platform & Storage Box	27
SAT TV	27
Steps from Transom to Aft Deck	28
Aft Dock Profile	28
Profile	28
CONTACTS	29
Contact details	29
Telephones	29
Office hours	29
Address	29

SPECIFICATIONS

Overview

The 466 Motoryacht by Carver is a maxi-volume aft cabin motoryacht. She is a 3 stateroom, 2 head vessel that will accommodate a large family. A huge salon that includes a dinette, L-shaped couch, 2 barrel chairs, breakfast bar, and flatscreen TV and entertainment center creates a nice living and entertaining area. The master stateroom aft features a walk-around queen berth, ensuite head with separate shower stall and lots of hanging and storage space. The forward VIP berth features a centerline queen berth, a huge hanging locker with built in shelves and private entrance to the guest head. The third stateroom features a single berth, privacy door and two storage compartments and a hanging locker.

The fully equipped, gourmet galley features a SubZero refrigerator and SubZero freezer, 3 burner flush top electric stove, convection microwave, dishwasher and tons of storage areas.

Above decks, there is a large aft deck with wetbar, dedicated marine A/C and aft bench seat; all protected by a hardtop, plexi wing doors and enclosures. Up three steps is the massive flybridge featuring a large L-shaped dinette, full hardtop with enclosures, serving bar and three bucket seats at the helm. This vessel has a complete electronics package including radar, autopilot, GPS plotter, sonar, and sat TV. Three comfortable bucket seats at the helm provide comfortable cruising as well as additional seating when hanging out enjoying the air conditioned/heated bridge.

Twin Volvo diesels with 480hp each cruise this big yacht at 19 knots all day long. This vessel has had excellent care and maintenance by a knowledgeable owner. Freshly serviced engines and transmissions mean you are turn key ready to cruise into the sunset. If you are looking for comfort and the ability to accommodate a large family or just want a roomy yacht, this is your yacht.

Call today for an appointment or more information.

Basic Information

Category: Motor Yacht

Model Year: 2005

Year Built: 2005

Country: United States

Dimensions

LOA: 46' 0" (14.02m)

Beam: 14' 11" (4.55m)

Min Draft: 3' 7" (1.09m)

Speed, Capacities and Weight

Displacement: 43500 Pounds

Water Capacity: 130 Gallons

Holding Tank: 80 Gallons

Fuel Capacity: 480 Gallons

Accommodations

Total Cabins: 3

Total Heads: 2

Hull and Deck Information

Hull Material: Fiberglass

Hull Color: White

Hull Finish: Plastic

Engine Information

Engines: 2

Manufacturer: Volvo Penta

Model: TAMD75EDC

Engine Type: Inboard

Fuel Type: Diesel

DETAILED INFORMATION

Salon

- Large Full Beam Salon
- L-Shaped Ultraleather Sleeper Sofa
- Bi-level Windows with Shades & Curtains
- Central Vacuum System
- 2 Ultraleather Barrel Chairs w/ Ottomans
- Beautiful Real Cherrywood Cabinetry
- Breakfast Bar with Storage
- 30" Flatscreen TV with Satellite TV Receiver
- Sony Component Stereo System
- Bose Surround Sound Speaker System
- Liquor Cabinet
- Marine Air Conditioner - Reverse Cycle
- Engine Room Access
- Distribution Panel
- CC TV Camera to Bridge

Galley

- SubZero Refrigerator
- SubZero Freezer
- 3 Burner Electric Stove
- Electric Oven
- Convection Microwave
- Lots of Storage Capacity
- Dishwasher
- 110V GFCI Outlets
- Granite Countertops
- Wood Flooring
- Large Storage Compartment in Floor
- Large Molded-In Sink
- Real Cherrywood Cabinetry

Master Stateroom

- Queen Size Walkaround Island Berth
- Pillowtop Mattress
- Cherry Side Tables

- Two Dressers with 4 Drawers Each
- Privacy Door
- Dedicated Marine Air Conditioner
- Ensuite Head with Separate Shower
- 2 - Opening Portlites
- 2 Hanging Lockers - Cedar Lined
- Mini Blinds
- 9 Storage Cabinets
- Stereo Speakers
- Flatscreen TV with DVD
- Large Aft Window with Privacy Blind
- Large Drawer Below Berth
- Beautiful Cherrywood Cabinetry
- Reading Lights

Master Head

- Vacuflush Toilet
- Separate Shower Stall
- Vent Fan
- Vanity with Solid Surface & Sink
- Hot & Cold Pressure Water
- 110V GFCI Outlet
- Privacy Door
- 2 Medicine Cabinets
- Opening Portlite
- Abundant Storage
- Nonskid Floor Surface

VIP Stateroom

- Located Forward
- Queen Size Centerline Berth
- Privacy Door
- Cherrywood Cabinetry
- Private Entry to Head
- 2 - Hanging Lockers - Cedar Lined
- Reading Lights
- Stereo Speakers
- Flatscreen TV with DVD
- Huge Hanging Locker with 4 Shelves

Third Stateroom

- Located to Starboard Opposite Galley
- Privacy Door
- Single Berth
- Hanging Locker - Cedar Lined
- Opening Portlight
- Storage Lockers with 3 Shelves
- Carpeted
- Doubles as Huge Storage Room
- Flat Screen TV

Guest Head

- Privacy Doors - 2 -
- Accessed from VIP Stateroom and Companionway
- Vacuflush Toilet
- Separate Shower Stall with Molded-in Seat
- Vanity with Solid Surface & Sink
- Vent Fan
- Medicine Cabinet
- Nonskid Floor Surface
- Towel Bars
- 110V GFCI Outlet

Helm

- Hydraulic Tilt Steering
- Volvo Electronic Binnacle Controls
- Six Air Conditioner Vents
- Helm Cover
- 3 - Swivel Bucket Seats
- Bow & Stern Thruster Controls
- Spotlight Control
- 12V Receptacle
- Trim Tab Controls
- Windlass Control
- Excellent Visibility
- Rear View Camera
- Clarion AM/FM/CD Stereo
- Ipod Docking Station
- Stereo Speakers

Flybridge

- Hardtop with Full Enclosures
- Air Conditioned/Heated
- Removable Carpet
- Large L-Shaped Dinette with Table
- Three Bucket Seats
- Cable TV Outlet
- 110V GFCI Outlets
- Stereo Speakers - 2 -
- Courtest Lights & Hardtop Lights
- Serving Bar with Corian Top - 2 -
- 5 Storage Compartments
- Wrap-Around Windshield with Wiper

Electronics

- Dual Raymarine E80 - Color Plotter/Sounder/Radar
- Raymarine 72-Mile Radar
- Raymarine Autopilot
- Raymarine Ray215 VHF Radio
- Backup Camera - Transom View
- Compass
- Sat TV System
- SeaKey System
- Engine Room Camera
- Salon Camera

Electrical System

- 120/240V Shore Power
- 12V DC System
- 19kW Kohler Generator - 2105 hours
- 3 - 8D Starting & House Batteries
- 4 - Batteries for Thrusters
- 1 - Group 24 Battery for Genset
- Distribution Panel
- Retractable 50 amp Shore Power Cord
- 30 amp Auxiliary Shore Power Cord
- Bonding System
- 4 - Batttery Chargers

Mechanical Equipment

- Bow Thruster
- Stern Thruster
- Macerator for Holding Tank
- Oil Exchanger
- Windlass
- 6 Marine Air Conditioners
- FCI Watermaker

Engine Room

- Twin TAMD75EDC Volvo Diesels - 480hp each - 775 hrs.
- Freshwater Cooled Engines
- Dripless Shaft Seals
- Seawater Strainers - 3 -
- Automatic Fire Suppression System
- Bilge Pumps with Auto Float Switches
- High Water Alarm
- Engine Room Blowers
- Engine Room Lights
- Ladder Access into Engine Room
- Racor Fuel Filters - 3 -
- Engine Room Camera to Bridge

Aft Deck

- Protected by Hardtop
- Full Enclosures
- Dedicated Marine Air Conditioner
- Removable Carpet
- Large Aft Bench Seat
- Wetbar with Refrigerator & Sink
- Plexiglass Wing Doors
- Removable Boarding Ladder - Pt or Stbd Use
- Stereo Speakers - 2 -
- Access to Swim Platform
- Molded-in Steps to Swim Platform
- Full Beam Swim Platform
- Swim Ladder
- Freshwater Transom Shower
- Storage Box on Swim Platform

- Overhead Ladder for Access to Hardtop
- BBQ Grill- Removable

Foredeck

- Stainless Steel Bow Rail
- Remote Control Spotlight
- Access for Anchor Chain Locker
- Windlass with Foot Switches
- Plow Anchor with All Chain Rode
- Freshwater Washdown
- Lower Windshield Cover
- Sunpad Cushions

Hull

- Anti-fouling Paint
- Trim Tabs
- Prop Pockets

Broker's Remarks

This one owner 466 Carver Motoryacht is extensively equipped and in excellent condition. She has had diligent maintenance and is ready to cruise. Call today for an appointment. This one won't last long!

Exclusions

- Owners personal items
- Tender and outboard motor

Disclaimer

The Company offers the details of this vessel in good faith but cannot guarantee or warrant the accuracy of this information nor warrant the condition of the vessel. A buyer should instruct his agents, or his surveyors, to investigate such details as the buyer desires validated. This vessel is offered subject to prior sale, price change, or withdrawal without notice.

Exclusions

Owner's personal belongings.

Disclaimer

The Company offers the details of this vessel or yacht in good faith but cannot guarantee or warrant the accuracy of this information nor warrant the condition of the vessel. A buyer should instruct his representatives, agents, or his surveyors, to investigate such details as the buyer desires validated. This vessel or yacht is offered subject to prior sale, price change, or withdrawal without notice.

PHOTOS

Salon & Dinette



Breakfast Bar



Breakfast Bar Storage



Salon Sleeper Sofa - STBD



Port Salon



Bottle Storage



Dinette



Barrel Chairs & Ottomans



Breakfast Bar & Galley



Galley



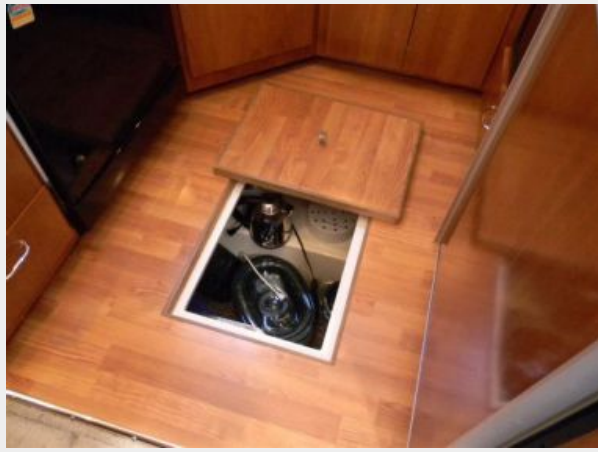
Galley



Galley



Galley Floor Storage



Salon Entertainment Center



Salon Entertainment Center



Salon Entertainment Stereo - Sony



Electrical Distribution Panel



Salon CC TV Camera



Guest Head



Guest Shower Stall



VIP Stateroom Berth



VIP Stateroom Side Cabinets



VIP Stateroom TV & DVD



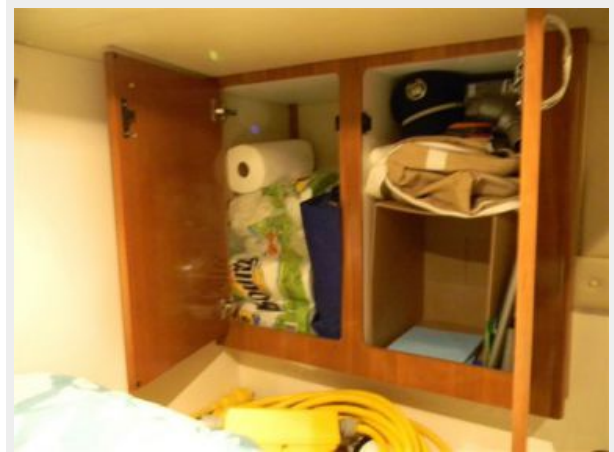
VIP Stateroom Closet



Third Stateroom Entry Door



Third Stateroom Storage Lockers



Third Stateroom



Washer/Dryer Combo



Master Stateroom Drawers



Master Stateroom TV



Master Stateroom Stereo/DVD



Master Stateroom Berth



Master Statroom Side Table



Master Statroom Side Table



Master Head Vanity



Master Head Shower Stall



Master Statroom Storage Closet



Master Statroom Closet



Engine Access Hatch



Helm Seats



Helm Port



Helm



Helm & Excellent Enclosure



Helm Stbd



VHF Radio



Raymarine GPS/Plotter/Radar/Sonar



Bridge Stereo & Docking Station



Autopilot



Bridge Dinette Lounge



Enclosures in Excellent Shape



Steps to Flybridge



Aft Deck Wet Bar & AC



Flybridge Storage & Countertop



Aft Deck Bench Seat & Ladder



Boarding Ladder fits Port and Stbd



Hardtop Access Ladder



19 KW Kohler Generator



Engine Room Equipment



Engine Room Equipment



FCI Watermaker Equipment



FCI Watermaker



Stbd Engine



Engine Recently Serviced - 5/14



Engine Room Equipment



Port Engine



Engine Model



Engine Room



Windlass & Anchor



Swim Platform & Storage Box



SAT TV



Steps from Transom to Aft Deck



Aft Dock Profile



Profile



CONTACTS

Andrey Shestakov, leading yacht broker of the sales department of Shestakov Yacht Sales Inc. Shestakov Yacht Sales Inc., the official representative of the Miami/Fort Lauderdale FL headquarters.

Contact details

Email: andrey@shestakovyachtsales.com

Web: shestakovyachtsales.com/en/

Telephones

USA: +1(954)274-4435

Office hours

Monday – Saturday: **9:00 - 21:00** EDT

Sunday: **closed**

Address



Harbour Towne Marina, 850 NE 3rd St,
STE 213, Dania, FL 33004