

## CAT NAP III — CARVER



**Судостроитель:** CARVER

**Год постройки:** 2005

**Модель:** Моторная яхта

**Цена:** ЦЕНА ЯХТЫ ПО ЗАПРОСУ

**Местонахождение:** United States

**Длина общая:** 46' 0" (14.02m)

**Ширина:** 14' 11" (4.55m)

**Мин. осадка:** 3' 7" (1.09m)

Купить **Cat Nap III — CARVER** а также выбрать подходящую вам яхту из нашего каталога яхт вам поможет опытный яхтенный брокер Андрей Шестаков. На сегодняшний день компания **Shestakov Yacht Sales Inc.** имеет большое количество яхт в собственном списке продаж, а также тесно сотрудничает со всеми крупными яхтенными производителями по всему миру.

Для того чтобы купить яхту **Cat Nap III — CARVER** а также проконсультироваться по любому вопросу связанному с покупкой, продажей, чартером яхт позвоните по телефону **+7(918)465-66-44**.

# ОГЛАВЛЕНИЕ

ОГЛАВЛЕНИЕ	2
ХАРАКТЕРИСТИКИ	6
Обзор	6
Основная информация	6
Размеры	7
Скорость, вместимость и масса	7
Размещение	7
Корпус и палуба	7
Информация о двигателе	7
ПОДРОБНОЕ ОПИСАНИЕ	8
Salon	8
Galley	8
Master Stateroom	8
Master Head	9
VIP Stateroom	9
Third Stateroom	10
Guest Head	10
Helm	10
Flybridge	11
Electronics	11
Electrical System	11
Mechanical Equipment	12
Engine Room	12
Aft Deck	12
Foredeck	13
Hull	13
Broker's Remarks	13
Exclusions	13

Disclaimer	13
Исключения	13
Отказ от ответственности	14
<b>ФОТОГРАФИИ</b>	<b>15</b>
Salon & Dinette	15
Breakfast Bar	15
Breakfast Bar Storage	15
Salon Sleeper Sofa - STBD	15
Port Salon	15
Bottle Storage	15
Dinette	16
Barrel Chairs & Ottomans	16
Breakfast Bar & Galley	16
Galley	16
Galley	16
Galley	16
Galley Floor Storage	17
Salon Entertainment Center	17
Salon Entertainment Center	17
Salon Entertainment Stereo - Sony	17
Electrical Distribution Panel	17
Salon CC TV Camera	17
Guest Head	18
Guest Shower Stall	18
VIP Stateroom Berth	18
VIP Stateroom Side Cabinets	18
VIP Stateroom TV & DVD	19
VIP Stateroom Closet	19
Third Stateroom Entry Door	19

Third Stateroom Storage Lockers	19
Washer/Dryer Combo	20
Third Stateroom	20
Master Statroom Drawers	20
Master Statroom TV	20
Master Statroom Stereo/DVD	20
Master Statroom Berth	20
Master Statroom Side Table	21
Master Statroom Side Table	21
Master Head Vanity	21
Master Head Shower Stall	21
Master Statroom Storage Closet	22
Master Statroom Closet	22
Engine Access Hatch	22
Helm Seats	22
Helm Port	22
Helm	22
Helm & Excellent Enclosure	23
Helm Stbd	23
VHF Radio	23
Raymarine GPS/Plotter/Radar/Sonar	23
Bridge Stereo & Docking Station	23
Autopilot	23
Bridge Dinette Lounge	24
Enclosures in Excellent Shape	24
Steps to Flybridge	24
Aft Deck Wet Bar & AC	24
Flybridge Storage & Countertop	24
Aft Deck Bench Seat & Ladder	24

Boarding Ladder fits Port and Stbd	25
Hardtop Access Ladder	25
19 KW Kholer Generator	25
Engine Room Equipment	25
Engine Room Equipment	25
FCI Watermaker Equipment	25
FCI Watermaker	26
Stbd Engine	26
Engine Recently Serviced - 5/14	26
Engine Room Equipment	26
Port Engine	26
Engine Model	26
Engine Room	27
Windlass & Anchor	27
Swim Platform & Storage Box	27
SAT TV	27
Steps from Transom to Aft Deck	28
Aft Dock Profile	28
Profile	28
<b>КОНТАКТЫ</b>	<b>29</b>
Контактная информация	29
Телефоны	29
Время работы	29
Адрес	29

---

# ХАРАКТЕРИСТИКИ

---

## Обзор

---

The 466 Motoryacht by Carver is a maxi-volume aft cabin motoryacht. She is a 3 stateroom, 2 head vessel that will accommodate a large family. A huge salon that includes a dinette, L-shaped couch, 2 barrel chairs, breakfast bar, and flatscreen TV and entertainment center creates a nice living and entertaining area. The master stateroom aft features a walk-around queen berth, ensuite head with separate shower stall and lots of hanging and storage space. The forward VIP berth features a centerline queen berth, a huge hanging locker with built in shelves and private entrance to the guest head. The third stateroom features a single berth, privacy door and two storage compartments and a hanging locker.

The fully equipped, gourmet galley features a SubZero refrigerator and SubZero freezer, 3 burner flush top electric stove, convection microwave, dishwasher and tons of storage areas.

Above decks, there is a large aft deck with wetbar, dedicated marine A/C and aft bench seat; all protected by a hardtop, plexi wing doors and enclosures. Up three steps is the massive flybridge featuring a large L-shaped dinette, full hardtop with enclosures, serving bar and three bucket seats at the helm. This vessel has a complete electronics package including radar, autopilot, GPS plotter, sonar, and sat TV. Three comfortable bucket seats at the helm provide comfortable cruising as well as additional seating when hanging out enjoying the air conditioned/heated bridge.

Twin Volvo diesels with 480hp each cruise this big yacht at 19 knots all day long. This vessel has had excellent care and maintenance by a knowledgeable owner. Freshly serviced engines and transmissions mean you are turn key ready to cruise into the sunset. If you are looking for comfort and the ability to accommodate a large family or just want a roomy yacht, this is your yacht.

Call today for an appointment or more information.

---

## Основная информация

---

**Тип судна:** Моторная яхта

**Модельный год:** 2005

**Год постройки:** 2005

**Страна:** United States

## Размеры

---

**Длина общая:** 46' 0" (14.02m)

**Ширина:** 14' 11" (4.55m)

**Мин. осадка:** 3' 7" (1.09m)

## Скорость, вместимость и масса

---

**Водоизмещение:** 43500 Pounds

**Вместимость воды:** 130 Gallons

**Вместимость сточного бака:** 80 Gallons

**Объем топливного бака:** 480 Gallons

## Размещение

---

**Всего кают:** 3

**Всего ком. состава:** 2

## Корпус и палуба

---

**Материал корпуса:** Fiberglass

**Цвет корпуса:** White

**Отделка корпуса:** Plastic

## Информация о двигателе

---

**Двигатели:** 2

**Производитель:** Volvo Penta

**Модель:** TAMD75EDC

**Тип двигателя:** Inboard

**Тип топлива:** Diesel

---

# ПОДРОБНОЕ ОПИСАНИЕ

---

## Salon

---

- Large Full Beam Salon
- L-Shaped Ultraleather Sleeper Sofa
- Bi-level Windows with Shades & Curtains
- Central Vacuum System
- 2 Ultraleather Barrel Chairs w/ Ottomans
- Beautiful Real Cherrywood Cabinetry
- Breakfast Bar with Storage
- 30" Flatscreen TV with Satellite TV Receiver
- Sony Component Stereo System
- Bose Surround Sound Speaker System
- Liquor Cabinet
- Marine Air Conditioner - Reverse Cycle
- Engine Room Access
- Distribution Panel
- CC TV Camera to Bridge

## Galley

---

- SubZero Refrigerator
- SubZero Freezer
- 3 Burner Electric Stove
- Electric Oven
- Convection Microwave
- Lots of Storage Capacity
- Dishwasher
- 110V GFCI Outlets
- Granite Countertops
- Wood Flooring
- Large Storage Compartment in Floor
- Large Molded-In Sink
- Real Cherrywood Cabinetry

## Master Stateroom

---

- Queen Size Walkaround Island Berth
- Pillowtop Mattress
- Cherry Side Tables



- Two Dressers with 4 Drawers Each
- Privacy Door
- Dedicated Marine Air Conditioner
- Ensuite Head with Separate Shower
- 2 - Opening Portlights
- 2 Hanging Lockers - Cedar Lined
- Mini Blinds
- 9 Storage Cabinets
- Stereo Speakers
- Flatscreen TV with DVD
- Large Aft Window with Privacy Blind
- Large Drawer Below Berth
- Beautiful Cherrywood Cabinetry
- Reading Lights

---

## Master Head

---

- Vacuflush Toilet
- Separate Shower Stall
- Vent Fan
- Vanity with Solid Surface & Sink
- Hot & Cold Pressure Water
- 110V GFCI Outlet
- Privacy Door
- 2 Medicine Cabinets
- Opening Portlite
- Abundant Storage
- Nonskid Floor Surface

---

## VIP Stateroom

---

- Located Forward
- Queen Size Centerline Berth
- Privacy Door
- Cherrywood Cabinetry
- Private Entry to Head
- 2 - Hanging Lockers - Cedar Lined
- Reading Lights
- Stereo Speakers
- Flatscreen TV with DVD
- Huge Hanging Locker with 4 Shelves

---

## Third Stateroom

---

- Located to Starboard Opposite Galley
- Privacy Door
- Single Berth
- Hanging Locker - Cedar Lined
- Opening Portlight
- Storage Lockers with 3 Shelves
- Carpeted
- Doubles as Huge Storage Room
- Flat Screen TV

---

## Guest Head

---

- Privacy Doors - 2 -
- Accessed from VIP Stateroom and Companionway
- Vacuflush Toilet
- Separate Shower Stall with Molded-in Seat
- Vanity with Solid Surface & Sink
- Vent Fan
- Medicine Cabinet
- Nonskid Floor Surface
- Towel Bars
- 110V GFCI Outlet

---

## Helm

---

- Hydraulic Tilt Steering
- Volvo Electronic Binnacle Controls
- Six Air Conditioner Vents
- Helm Cover
- 3 - Swivel Bucket Seats
- Bow & Stern Thruster Controls
- Spotlight Control
- 12V Receptacle
- Trim Tab Controls
- Windlass Control
- Excellent Visibility
- Rear View Camera
- Clarion AM/FM/CD Stereo
- Ipod Docking Station
- Stereo Speakers

---

## Flybridge

---

- Hardtop with Full Enclosures
- Air Conditioned/Heated
- Removable Carpet
- Large L-Shaped Dinette with Table
- Three Bucket Seats
- Cable TV Outlet
- 110V GFCI Outlets
- Stereo Speakers - 2 -
- Courtest Lights & Hardtop Lights
- Serving Bar with Corian Top - 2 -
- 5 Storage Compartments
- Wrap-Around Windshield with Wiper

---

## Electronics

---

- Dual Raymarine E80 - Color Plotter/Sounder/Radar
- Raymarine 72-Mile Radar
- Raymarine Autopilot
- Raymarine Ray215 VHF Radio
- Backup Camera - Transom View
- Compass
- Sat TV System
- SeaKey System
- Engine Room Camera
- Salon Camera

---

## Electrical System

---

- 120/240V Shore Power
- 12V DC System
- 19kW Kohler Generator - 2105 hours
- 3 - 8D Starting & House Batteries
- 4 - Batteries for Thrusters
- 1 - Group 24 Battery for Genset
- Distribution Panel
- Retractable 50 amp Shore Power Cord
- 30 amp Auxiliary Shore Power Cord
- Bonding System
- 4 - Batttery Chargers

---

## Mechanical Equipment

---

- Bow Thruster
- Stern Thruster
- Macerator for Holding Tank
- Oil Exchanger
- Windlass
- 6 Marine Air Conditioners
- FCI Watermaker

---

## Engine Room

---

- Twin TAMD75EDC Volvo Diesels - 480hp each - 775 hrs.
- Freshwater Cooled Engines
- Dripless Shaft Seals
- Seawater Strainers - 3 -
- Automatic Fire Suppression System
- Bilge Pumps with Auto Float Switches
- High Water Alarm
- Engine Room Blowers
- Engine Room Lights
- Ladder Access into Engine Room
- Racor Fuel Filters - 3 -
- Engine Room Camera to Bridge

---

## Aft Deck

---

- Protected by Hardtop
- Full Enclosures
- Dedicated Marine Air Conditioner
- Removable Carpet
- Large Aft Bench Seat
- Wetbar with Refrigerator & Sink
- Plexiglass Wing Doors
- Removable Boarding Ladder - Pt or Stbd Use
- Stereo Speakers - 2 -
- Access to Swim Platform
- Molded-in Steps to Swim Platform
- Full Beam Swim Platform
- Swim Ladder
- Freshwater Transom Shower
- Storage Box on Swim Platform

- Overhead Ladder for Access to Hardtop
- BBQ Grill- Removable

---

## Foredeck

---

- Stainless Steel Bow Rail
- Remote Control Spotlight
- Access for Anchor Chain Locker
- Windlass with Foot Switches
- Plow Anchor with All Chain Rode
- Freshwater Washdown
- Lower Windshield Cover
- Sunpad Cushions

---

## Hull

---

- Anti-fouling Paint
- Trim Tabs
- Prop Pockets

---

## Broker's Remarks

---

This one owner 466 Carver Motoryacht is extensively equipped and in excellent condition. She has had diligent maintenance and is ready to cruise. Call today for an appointment. This one won't last long!

---

## Exclusions

---

- Owners personal items
- Tender and outboard motor

---

## Disclaimer

---

The Company offers the details of this vessel in good faith but cannot guarantee or warrant the accuracy of this information nor warrant the condition of the vessel. A buyer should instruct his agents, or his surveyors, to investigate such details as the buyer desires validated. This vessel is offered subject to prior sale, price change, or withdrawal without notice.

---

## Исключения

---

При продаже яхты исключаются личные вещи владельца.

## **Отказ от ответственности**

---

Компания предоставляет описание судна или яхты добросовестно, но не может гарантировать точность этой информации, а также не ручается за техническое состояние. Покупатель должен проинструктировать своих агентов или оценщиков исследовать представленную информацию более подробно, по собственному желанию. Продажа судна или яхты, изменение цены или снятие с продажи будет происходить без предварительного уведомления.

# ФОТОГРАФИИ

**Salon & Dinette**



**Breakfast Bar**



**Breakfast Bar Storage**



**Salon Sleeper Sofa - STBD**



**Port Salon**



**Bottle Storage**





**Dinette**



**Barrel Chairs & Ottomans**



**Breakfast Bar & Galley**



**Galley**



**Galley**



**Galley**





**Galley Floor Storage**



**Salon Entertainment Center**



**Salon Entertainment Center**



**Salon Entertainment Stereo - Sony**



**Electrical Distribution Panel**



**Salon CC TV Camera**



**Guest Head**



**Guest Shower Stall**



**VIP Stateroom Berth**



**VIP Stateroom Side Cabinets**



**VIP Stateroom TV & DVD**



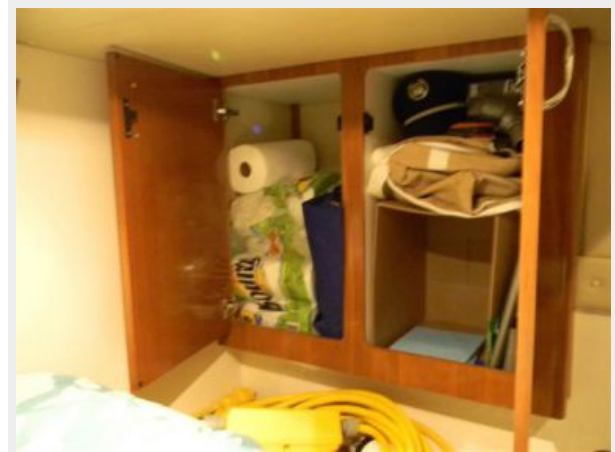
**VIP Stateroom Closet**



**Third Stateroom Entry Door**



**Third Stateroom Storage Lockers**





**Third Stateroom**



**Washer/Dryer Combo**



**Master Stateroom Drawers**



**Master Stateroom TV**



**Master Stateroom Stereo/DVD**



**Master Stateroom Berth**



**Master Statroom Side Table**



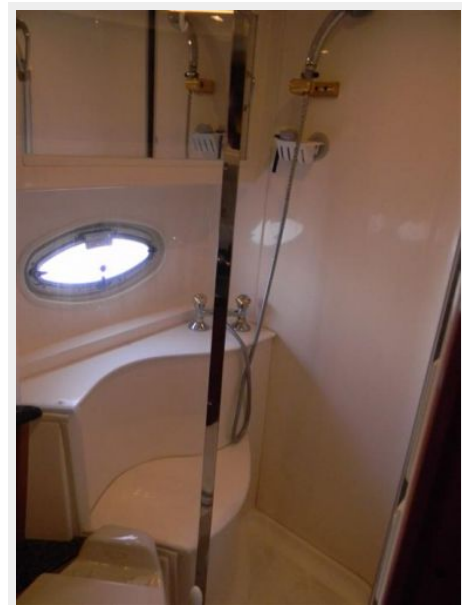
**Master Statroom Side Table**



**Master Head Vanity**



**Master Head Shower Stall**





**Master Statroom Storage Closet**



**Master Statroom Closet**



**Engine Access Hatch**



**Helm Seats**



**Helm Port**



**Helm**



### Helm & Excellent Enclosure



### Helm Stbd



### VHF Radio



### Raymarine GPS/Plotter/Radar/Sonar



### Bridge Stereo & Docking Station



### Autopilot





**Bridge Dinette Lounge**



**Enclosures in Excellent Shape**



**Steps to Flybridge**



**Aft Deck Wet Bar & AC**



**Flybridge Storage & Countertop**



**Aft Deck Bench Seat & Ladder**





### Boarding Ladder fits Port and Stbd



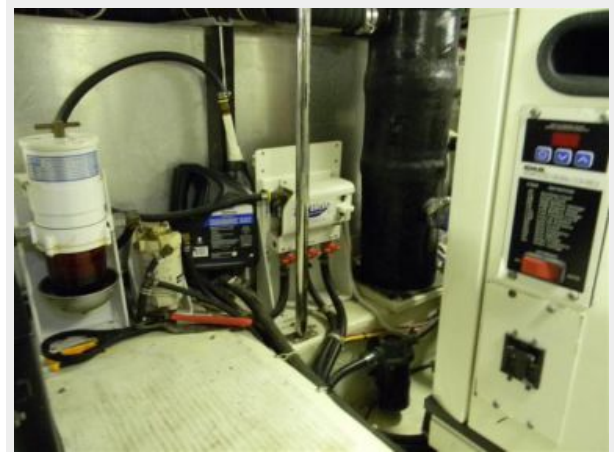
### Hardtop Access Ladder



### 19 KW Kohler Generator



### Engine Room Equipment



### Engine Room Equipment



### FCI Watermaker Equipment



**FCI Watermaker**



**Stbd Engine**



**Engine Recently Serviced - 5/14**



**Engine Room Equipment**



**Port Engine**



**Engine Model**





**Engine Room**



**Windlass & Anchor**



**Swim Platform & Storage Box**



**SAT TV**



## Steps from Transom to Aft Deck



## Aft Dock Profile



## Profile



# КОНТАКТЫ

---

Андрей Шестаков (Andrey Shestakov) – ведущий яхтенный брокер отдела продаж яхт и судов компании Shestakov Yacht Sales Inc. Официальный представитель Shestakov Yacht Sales Inc. для русскоговорящих клиентов в центральном офисе компании в Майами/Форт Лодердейл/Флорида/США.

## Контактная информация

---

Email: [andrey@shestakovyachtsales.com](mailto:andrey@shestakovyachtsales.com)

Web: [shestakovyachtsales.com](http://shestakovyachtsales.com)

## Телефоны

---

Краснодарский край: **+7(918)465-66-44**

США, Майами, Флорида: **+1(954)274-4435**

## Время работы

---

Понедельник – Суббота: **9:00 - 21:00**  
EDT

Воскресенье: **Закрито**

## Адрес

---



Harbour Towne Marina, 850 NE 3rd St,  
STE 213, Dania, FL 33004