

WILLAWAY — HATTERAS



Builder: HATTERAS

Year Built: 1994

Model: Motor Yacht

Price: PRICE ON APPLICATION

Location: United States

LOA: 70' 0" (21.34m)

Beam: 18' 2" (5.54m)

Min Draft: 5' 6" (1.68m)

Cruise Speed: 21 Kts. (24 MPH)

Max Speed: 25 Kts. (29 MPH)

Our experienced yacht broker, Andrey Shestakov, will help you choose and buy a yacht that best suits your needs **Willaway — HATTERAS** from our catalogue. Presently, at Shestakov Yacht Sales Inc., we have a wide variety of yachts available on our sale's list. We also work in close contact with all the big yacht manufacturers from all over the world.

If you would like to buy a yacht **Willaway — HATTERAS** or would like help answering any questions concerning purchasing, selling or chartering a yacht, please call **+1(954)274-4435**

TABLE OF CONTENTS

TABLE OF CONTENTS	2
SPECIFICATIONS	6
Basic Information	6
Dimensions	6
Speed, Capacities and Weight	6
Accommodations	6
Hull and Deck Information	7
Engine Information	7
DETAILED INFORMATION	8
Willaway	8
Walkthrough	8
Galley	9
Salon	9
Master Stateroom	9
Master Head & Shower	10
VIP Forward Stateroom	10
VIP Forward Head & Shower	10
Crew Quarters or Third Stateroom	10
Crew Quarters or Third Stateroom Head & Shower	10
VIP Stateroom Midship	10
VIP Stateroom Midship Head & Shower	11
Generator Room	11
Cockpit	11
Aft Deck	11
Pilothouse Electronics	11
Flybridge Electronics	12
Electrical System	12
Flybridge	12

Mechanical Equipment	12
Deck & Foredeck	13
Updates	13
Salesman's Comments	13
Exclusions	14
Disclaimer	14
PHOTOS	15
Profile	15
Profile	15
Salon	15
Salon	15
Dining	15
Dining	15
Dinette	16
Galley	16
Master Stateroom	16
Stairs To Guest Staterooms	16
Master Stateroom	16
Master Stateroom	16
Master Head & Shower	17
Master Head & Shower	17
VIP Stateroom Forward	17
VIP Stateroom Forward	17
VIP Forward Head & Shower	18
VIP Stateroom Midship	18
VIP Midship Head & Shower	18
VIP Midship Head & Shower	18
Crew / Guest Quarters Port	19
Crew / Guest Head & Shower	19

Crew / Guest Head & Shower	19
Pilot House Helm	19
Pilot House Seating	20
Pilot House Helm	20
Bridge Helm	20
Bridge Helm	20
Bridge Helm	21
Bridge Helm	21
Bridge Seating	21
Bridge Seating	21
Bridge Seating	21
Bridge Seating	21
Forward View	22
Cockpit	22
Forward View / Sunpad	22
Pulpit	22
Engine Room	23
Engine Room	23
Engine Room	23
Engine Room	23
Engine Room	23
Engine Room	23
Profile	23
Profile	24
Profile	24
Stern Profile	24
Profile	24
CONTACTS	25
Contact details	25
Telephones	25

Office hours 25

Address 25

SPECIFICATIONS

Basic Information

Category: Motor Yacht

Sub Category: Cockpit

Model Year: 1994

Year Built: 1994

Country: United States

Fly Bridge: Yes

Cockpit: Yes

Dimensions

LOA: 70' 0" (21.34m)

Beam: 18' 2" (5.54m)

Min Draft: 5' 6" (1.68m)

Speed, Capacities and Weight

Cruise Speed: 21 Kts. (24 MPH)

Max Speed: 25 Kts. (29 MPH)

Displacement: 103000 Pounds

Water Capacity: 345 Gallons

Fuel Capacity: 1596 Gallons

Accommodations

Total Cabins: 4

Total Berths: 5

Sleeps: 8

Total Heads: 4

Crew Cabin: 1

Crew Berths: 2

Crew Heads: 1

Hull and Deck Information

Hull Material: Fiberglass Over Wood

Deck Material: Fiberglass

Engine Information

Engines: 2

Manufacturer: Detroit Diesel

Model: DDA12V92TA

Engine Type: Inboard

Fuel Type: Diesel

DETAILED INFORMATION

Willaway

WILLAWAY is a classic 70' Hatteras Cockpit Motor Yacht built on Hatteras' popular 18'2" beam series yachts. With the original factory cockpit and no extensions, the yacht has a contemporary styling and a graceful profile that was completely painted in 2009 & 2011. Features include 4 staterooms, each with an ensuite head & shower, an enclosed pilot house, fully enclosable galley-up, large salon, large flybridge, full-beam engine room and cockpit w/ swim platform for line handling & water sports. WILLAWAY has been meticulously maintained and updated by owner and crew, which is reflected in its excellent condition.

Walkthrough

WILLAWAY may be boarded from three locations: the swim platform via a dinghy or dockside on both sides of the cockpit or, forward, on both sides through gates adjacent to the pilothouse entrance doors. There is a Marquipt tide ride ladder that may be installed on either side at the dock and stored on deck when not in use.

The pristine, forward wrap-around fiberglass deck allows interior access through sliding doors on both sides of the pilothouse. On the bow, there is a large sun pad in front of the pilothouse, just below the wide windshield, and a forward ride seat with newly-upholstered cushions, as well as a fiberglass pulpit & windlass.

Inside, the pilothouse provides a helm full of all necessary electronics and handling equipment, a raised leather bench seat for two, and wood flooring. A starboard staircase leads from the pilothouse to the flybridge.

Forward on the starboard side, a staircase leads down to the two VIP staterooms and the third stateroom with over and under berths. Each stateroom has an ensuite head & shower.

Aft from the pilot house is the completely-enclosed galley with U-shape dinette, all new, full-sized Kitchen Aid appliances, and wood flooring.

Continuing aft through a privacy door, the salon/dining area furnished with a circular glass top dining table surrounded by four upholstered chairs and an entertainment center with a large, 55" Sony TV and stereo equipment. Aft on the port side is an L-shaped sofa, tastefully covered in light fabric with brightly-colored accent pillows, and a teak cocktail table. Adjacent are two comfortable reclining chairs with an occasional table between. A decorative, 110-volt lamp tops this table.

A private staircase on the salon's starboard side leads below where a privacy door opens to the Master stateroom and another to the full beam engine room.

The Master Stateroom is furnished with a centerline, king berth. On the port side is a walk-in, cedar lined closet and chest of drawers. A built-in vanity with TV above is starboard.

The ensuite, his-and-her master head with centerline, walk-through, glass-enclosed shower is accessed via doors on the aft bulkhead that flank the berth. The aft salon door leads to a small aft deck and, beyond, to the large cockpit with a two-way transom door that allows access to the fiberglass swim platform.

Galley

The full-beam galley is located on the main deck just behind the pilothouse. The dinette is starboard, adjacent to the U-shaped galley with full-sized kitchen appliances. Doors, one of which leads to the pilothouse and the other to the salon, may be closed to completely separate the galley, offering privacy for the guest areas. Abundant Corian counter top space, plenty of cabinets for storage, and Amtico oak wood flooring that flows into the pilothouse highlight the area.

Corian counter tops Delta single lever faucet Franke white sink Insinkerator garbage disposal Kitchen Aid side-by-side refrigerator/freezer, in-door ice & water Kitchen Aid full size oven Kitchen Aid 4 burner range Kitchen Aid dishwasher Kitchen Aid microwave convection oven Nutone built-in stainless steel blender GFI outlets Vinyl headliner Valances with blinds 24 & 120 volt lighting fixtures Large windows on port & starboard side Telephone outlet Stereo speakers, flush mount Cruisair SMX AC controls Abundant draw & cabinet storage

Salon

The salon is on the main deck just aft of the galley, with a privacy door separating it from the galley & dinette. The forward end of the salon features an entertainment center with 55" Sony flat screen TV, U-line ice maker, U-line freezer and stereo equipment.

Large L-shaped upholstered sofa w/storage beneath Custom teak cocktail table Glass dining table with 4 upholstered chairs 2 Lazy Boy recliners Round occasional table with chair Sony 55" flat screen TV Denon AM/FM stereo receiver Blue ray DVD player Stereo speakers with volume control SAT TV receiver Lutron adjustable preset lighting Recessed lighting, 24 & 120 volt Cruisair SMX AC controls Oak wood paneling, matching cabinet doors and drawers Stairwell to the owner's quarters & engine room compartment Carpet, royal blue

Master Stateroom

The full-beam master stateroom provides a centerline king size berth with upholstered headboard and custom painted scene of a window opening to the sea. Behind the berth is a custom his & her head with private areas separated by a custom walk-thru shower.

King berth with storage under berth Wood paneling, oak Vinyl headliner Walk-in cedar-lined Built-in vanity with TV above 42" Sony Bravia flat screen TV SAT TV receiver Clarion AM/FM/CD stereo 24 & 120-volt lighting Built-in dressers, port & starboard with 9 drawers each side 2 large port-light hatches each side Cruisair SMX AC controls Carpet, royal blue

Master Head & Shower

Custom upgrade (his & her-style head & shower) 2 Galley Maid Elegance heads Custom walk-thru shower with adjustable shower head & glass doors Molded counter tops w/sinks Exhaust blowers 24 & 120 Volt lighting Storage cabinets with sliding mirror Vinyl headliner Tile flooring

VIP Forward Stateroom

The VIP with en-suite head & shower is all the way forward.

Queen-sized tapered berth on centerline with storage under Dressers on port & starboard side Cedar-lined hanging locker Overhead screened hatch 24 & 120 Volt lighting Sony Bravia 27" flat screen TV SAT TV receiver Mirrored forward bulkhead Cruisair SMX AC controls

VIP Forward Head & Shower

Ensuite with entry way to hallway & day head service Galley Maid electric head Molded counter top with sink & faucet Medicine cabinet with mirrored door Exhaust blower Stall shower with bi-fold door Tile flooring Washer & dryer just outside head in the hallway

Crew Quarters or Third Stateroom

With over & under berth and ensuite head & shower, this stateroom is on the port side. 6'6" berths each with reading light Cruisair SMX AC controls Hanging locker, cedar-lined 24 & 120 Volt lighting Stereo speakers

Crew Quarters or Third Stateroom Head & Shower

Galley Maid electric head Molded counter top & sink Stall shower with bi-fold door Vinyl head liner Vinyl flooring

VIP Stateroom Midship

The amidships VIP stateroom is also full beam and has a walk around queen berth, upholstered headboard, and private ensuite head/shower & tub arrangement.

Full size cedar-lined hanging locker Nightstands with drawers Storage under berth 24 & 120 Volt lighting Stereo speakers Cruisair SMX AC controls Large port light escape hatch Reading lamps Upholstered valances & draperies Oak wood paneling Full-length mirror

VIP Stateroom Midship Head & Shower

Molded counter top & sink & faucet Large shower with glass enclosure & whirlpool tub Electric head, Galley Maid Exhaust blower 24 & 120 Volt lighting

Generator Room

The generator room is located between the lower stateroom and is accessed via a hinged door in the floor of the hallway.

Twin 20 KW Onan generators with sound enclosures Cruisair air conditioning compressors 97,000 btu's Generator room blower, 24 volt Fresh water outlet Access ladder 24 & 120 Volt lighting Voltage regulating transformers Fire extinguisher system Raritan Waste treatment system (overboard discharge legal) Holding tank pump

Cockpit

Molded fiberglass with non-skid sole Scuppered cockpit and Lazarette hatch Lazarette storage with lights Transom door and coaming gate Hatteras fiberglass swim platform & ladder, Aristocrat Blue 24 volt lights under coaming Freshwater wash-down Rod holders (2) & flag staff holder Stainless steel staircase to aft deck w/hand rail

Aft Deck

Molded fiberglass with non-skid sole 120 volt duplex outlet 24 volt overhead light Varnished teak hand rail Varnished teak toe cap

Pilothouse Electronics

Simrad AP 28 Auto Pilot Furuno 15"3 D monitors (2) plotter & radar Furuno GP 32 GPS / WAAS Navigator Furuno GPS/plotter Furuno 48-mile radar with open array antenna Datamarine navigator speed & log Datamarine International digital depth ind. Datamarine apparent wind indicator ICOM M 125 VHF w/remote mic Raytheon Ray 430 hailer w/remote mic Ritchie 6"magnetic compass DDEC clutches & throttles w/synchronizer DDEC electronic controls gauges Intellium satellite TV antenna Hatteras systems monitor panel Vetus bow thruster controls Naiad stabilizer controls Emergency engine shut offs Emergency engine back-up controls Bennett trim tab controls ACR RCL100 spotlight remote control VDO engine gauges,

VDO rudder angle indicator Cruisair SMX digital controls Stereo speakers (2) Overhead speakers

Flybridge Electronics

Simrad AP 24 Auto Pilot Furuno 3D NavNet 15" display Furuno radar GPS & plotter Furuno GP32 GPS/WAAS navigator Datamarine digital speed & log Datamarine 3030 digital depth ICOM M504 VHF w/remote mic DDA EDM electronic engine displays Ritchie 6" magnetic compass VDO rudder angle indicator VDO volt meters (2) Hatteras systems monitor panel ACR spotlight controls Naiad stabilizer controls Vetus bow thruster controls DDEC clutches & throttles w/synchronizer KVH Trac Vision 3 dome Trim tab controls Windlass remote control

Electrical System

Two 20-KW Onan generators with sound shields Two 24-volt banks of heavy duty 12-volt marine batteries Two automatic battery chargers Battery paralleling system Transformer connected shore lines Two 120 volt, 50 amp, fused electrical inlets, port & starboard Two 240 volt, 50 amp, fused electrical inlets, port & starboard Two 240 volt, 50 amp, retractable shore cords, port & starboard 24 & 120 volt light fixtures 120 volt duplex outlets Battery control panel with fuses & isolation switches 24 DC distribution panel with magnetic circuit breakers & meter 24 volt DC electronics panel with magnetic circuit breakers & meter 120/240 volt AC distribution panel with magnetic circuit breakers AC switching panel w/volt meter, ammeter, frequency meter & interlocking selector Hatteras 12 point systems monitor with visual & audible signals Navigation lights Ground fault protection on AC receptacles & lighting circuits Air conditioning w/reverse-cycle heating SSB radio ground screen in cabin hard top Telephone/CATV inlets, one each, port & starboard & cords TV antenna, omni-directional Electrical bonding system 12 volt battery & charger on fly bridge for electronics

Flybridge

Molded fiberglass bridge with non-skid surface Storage under control console w/ 24-volt lighting Stainless steel grab rail Tinted acrylic windshield Control station with necessary switches & instruments Dual lever controls Hydraulic steering Helm & companion seat, Release Marine w/ladder back and cushions Widened & extended fly bridge with U-shape seating and removable cushions Painted aluminum radar arch with lights & custom mast Bimini top attached to radar arch New style fly bridge hatch, clear top & painted door Custom L-shaped seating facing forward, Release Marine arm rest; comfortable cushions Custom bar area with sink and plenty of storage Canvas covers for bar, helm, two seats and custom lounge Davit & chocks, Marquipt 1500 lbs. Novurania 14' dinghy 2004 w/50 hp Yamaha 4 stroke 2004 Full dinghy cover

Mechanical Equipment

Engines rebuilt by Florida DDA, May 2015 with 5 hrs. total time Engine start & stops and diagnostic hook-ups Walker air sep on main engines Chrome engine valve covers High Lift fuel priming pumps, Leeson –2 Reverso oil changing system, engines & generators Duplex fuel filters/ water separators with bypass manifold each engine Racor 1000 w/ vacuum gauges Racor fuel / water separators for generators 500 series Fire extinguishing system, engine compartment & generator compartment, auto & manual Kidde 75 lb. engine room Kidde Fire extinguisher system generator room Generator hours, #1 3412, #2 3250 Naiad stabilizer system (rebuilt & serviced) Vetus bow thruster Fiberglass fuel tanks U.L. approved Bilge pumps, 5, auto & manual electric 120 volt fluorescent lights 24 volt enclosed lights 24 volt bilge blowers Two 120 volt ventilating fans Fuel tank selectors, supply & return each tank 4 tanks Freshwater fill hoses for engines & generator Dockside water inlets w/pressure regulating valves Ball-valves on all underwater through hull fittings, bonded Pressurized freshwater system w/40 gallon electric water heater, Rheem Mach 5 Headhunter 24 volt DC water pump system Well X Troll water pressure tank Water maker 600 gal/day, Water Maker Inc. Nutone central vacuum system Sewage hold tank plumbed to dockside Engine block heaters Air compressor & hose Marquipt davit & chocks, 1500 lbs. Electric air horns, dual trumpet

Deck & Foredeck

Hatteras fiberglass pulpit with teak inlay & stainless anchor chute & roller Galley Maid BBHW chain windlass w/chain stop Plow anchor, 110 lbs. Separate anchor rode Forward bow seat with new cushion Forward bow sun pad with new cushions 2 Hatteras fiberglass deck boxes Six spring line cleats Bow & stern chocks & cleats Stainless steel bow hand rails 2 mounted life rafts, 6 man Marquipt tide ride ladder Deck hatches (3) Three electric windshield wipers & washers Sail tracks for fenders on hull sides Dockside water inlets, port & starboard New style routed hull vents New window frames, painted Bottom painted Jan. 2014

Updates

Imron paint by American Marine, hull Aristocrat Blue (2009), top sides Matterhorn White (2011) Bottom paint, Jan. 2014 Windows frames replaced with wood frames & painted New aft deck hand rail New interior including, mirrors, carpet, valances, chairs New full-sized galley appliances, Kitchen Aid New washer/dryer Custom tub/shower walk-thru arrangement New head system & treatment system Custom fly bridge seating, new New TV's and some electronics

Salesman's Comments

Exceptional in all areas, WILLAWAY is owned and maintained by an experienced owner and captain. No expense was spared in the maintenance and many improvements have been made in its years of ownership. All of the latest features from Hatteras are found on this yacht, from the widened and extended flybridge to the custom his & her master stateroom head & shower.

WILLAWAY has the features of a much larger yacht: a full-beam master, 2 VIP guest staterooms with ensuite heads & showers, and a large full-beam engine room. The advantages of new paint, new electronics, new appliances, wood flooring and a tasteful décor are excellent additional benefits.

This yacht has everything! The only thing missing is you!

Exclusions

Owner's personal belongings.

Disclaimer

The Company offers the details of this vessel or yacht in good faith but cannot guarantee or warrant the accuracy of this information nor warrant the condition of the vessel. A buyer should instruct his representatives, agents, or his surveyors, to investigate such details as the buyer desires validated. This vessel or yacht is offered subject to prior sale, price change, or withdrawal without notice.

PHOTOS

Profile



Profile



Salon



Salon



Dining



Dining



Dinette

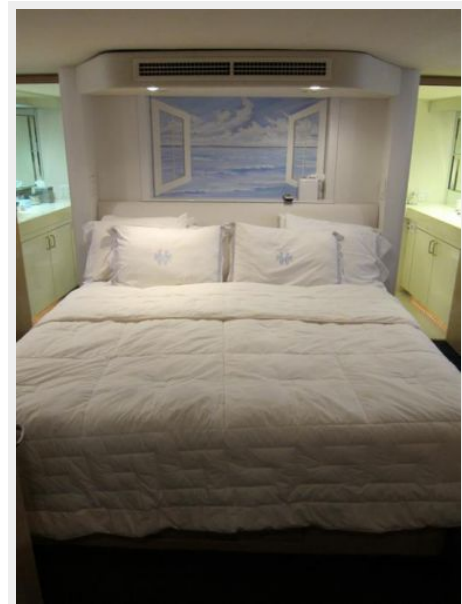


Galley



Master Stateroom

Stairs To Guest Staterooms



Master Stateroom



Master Stateroom



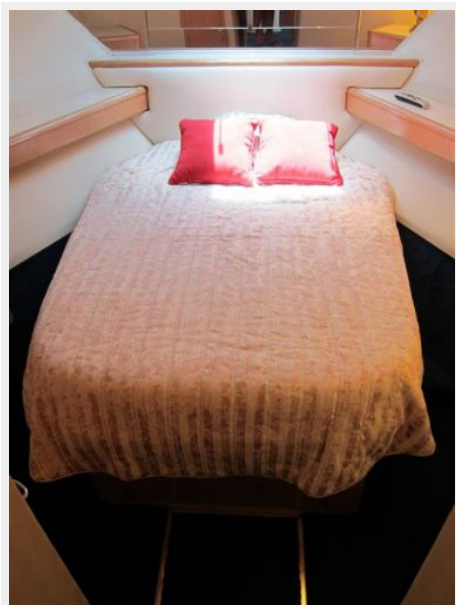
Master Head & Shower



Master Head & Shower



VIP Stateroom Forward



VIP Stateroom Forward



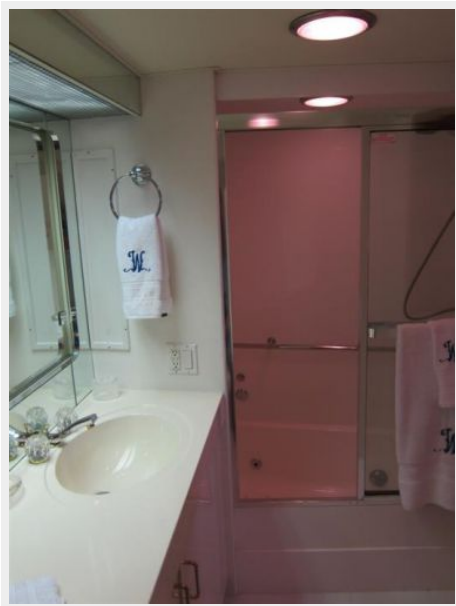
VIP Forward Head & Shower



VIP Stateroom Midship



VIP Midship Head & Shower



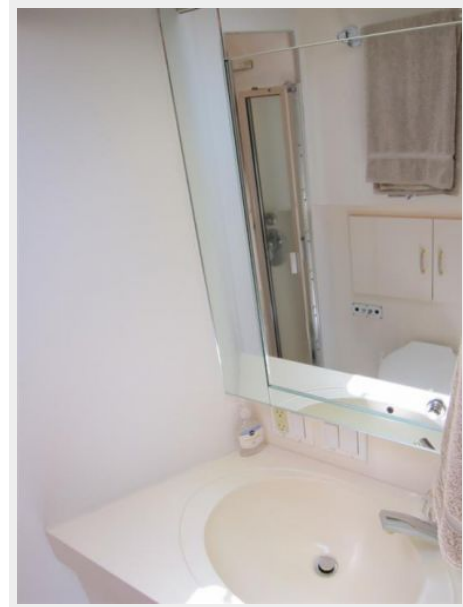
VIP Midship Head & Shower



Crew / Guest Quarters Port



Crew / Guest Head & Shower



Crew / Guest Head & Shower

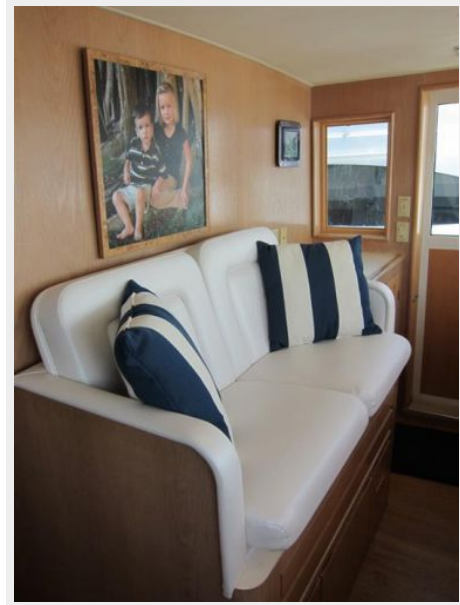


Pilot House Helm



Pilot House Seating

Pilot House Helm



Bridge Helm



Bridge Helm



Bridge Helm



Bridge Helm



Bridge Seating



Bridge Seating



Bridge Seating



Bridge Seating



Cockpit



Forward View



Forward View / Sunpad



Pulpit



Engine Room



Engine Room



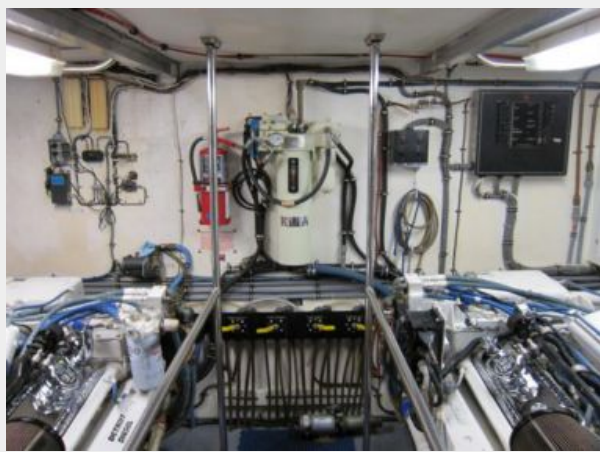
Engine Room



Engine Room



Engine Room



Profile



Profile



Profile



Stern Profile



Profile



CONTACTS

Andrey Shestakov, leading yacht broker of the sales department of Shestakov Yacht Sales Inc. Shestakov Yacht Sales Inc., the official representative of the Miami/Fort Lauderdale FL headquarters.

Contact details

Email: andrey@shestakovyachtsales.com

Web: shestakovyachtsales.com/en/

Telephones

USA: +1(954)274-4435

Office hours

Monday – Saturday: **9:00 - 21:00** EDT

Sunday: **closed**

Address



Harbour Towne Marina, 850 NE 3rd St,
STE 213, Dania, FL 33004