

PASSAGEWAY — GRAND BANKS



Судостроитель: GRAND BANKS

Год постройки: 1996

Модель: Траулер

Цена: **ЦЕНА ЯХТЫ ПО ЗАПРОСУ**

Местонахождение: United States

Длина общая: 49' 8" (15.14m)

Макс. осадка: 4' 2" (1.27m)

Крейс. скорость: 10 Kts. (12 MPH)

Макс. скорость: 18 Kts. (21 MPH)

Купить **Passageway — GRAND BANKS** а также выбрать подходящую вам яхту из нашего каталога яхт вам поможет опытный яхтенный брокер Андрей Шестаков. На сегодняшний день компания **Shestakov Yacht Sales Inc.** имеет большое количество яхт в собственном списке продаж, а также тесно сотрудничает со всеми крупными яхтенными производителями по всему миру.

Для того чтобы купить яхту **Passageway — GRAND BANKS** а также проконсультироваться по любому вопросу связанному с покупкой, продажей, чартером яхт позвоните по телефону **+7(918)465-66-44**.

ОГЛАВЛЕНИЕ

| | |
|-------------------------------|----|
| ОГЛАВЛЕНИЕ | 2 |
| ХАРАКТЕРИСТИКИ | 5 |
| Обзор | 5 |
| Основная информация | 5 |
| Размеры | 5 |
| Скорость, вместимость и масса | 6 |
| Размещение | 6 |
| Корпус и палуба | 6 |
| Информация о двигателе | 6 |
| ПОДРОБНОЕ ОПИСАНИЕ | 7 |
| Vessel Walkthrough | 7 |
| Electrical Equipment | 14 |
| Engine Room | 14 |
| Performance | 15 |
| Disclaimer | 15 |
| Исключения | 16 |
| Отказ от ответственности | 16 |
| ФОТОГРАФИИ | 17 |
| Salon 2 | 17 |
| Engine Room | 17 |
| Profile | 17 |
| Upper Helm | 17 |
| Starboard at Dock | 17 |
| Port at Dock | 17 |
| Transom | 18 |
| Boat Deck | 18 |
| Mast | 18 |
| Tender | 18 |

| | |
|------------------------------|-----------|
| Flybridge | 19 |
| Side Decks | 19 |
| Salon | 19 |
| Salon 3 | 19 |
| Salon Bar & Icemaker | 20 |
| Salon Entertainment | 20 |
| Lower Helm | 20 |
| Lower Helm 2 | 20 |
| Guest Stateroom | 21 |
| Galley | 21 |
| Guest Stateroom Lockers | 21 |
| Guest Head | 21 |
| Master Stateroom 2 | 22 |
| Master Stateroom | 22 |
| Master Head | 22 |
| Master Shower | 22 |
| Generator | 23 |
| Shaft Seals | 23 |
| Port Engine | 23 |
| Clean Mechanical Space | 23 |
| Engine Room Looking Aft | 23 |
| At Dock | 23 |
| Awesome Boat | 24 |
| Spring 2014 Prep | 24 |
| Fresh Bottom Paint | 24 |
| Spring 2014 Prep 2 | 24 |
| Spring 2014 Prep 3 | 24 |
| КОНТАКТЫ | 25 |
| Контактная информация | 25 |

| | |
|--------------|----|
| Телефоны | 25 |
| Время работы | 25 |
| Адрес | 25 |

ХАРАКТЕРИСТИКИ

Обзор

Owners are so confident in this boat that they are willing to offer a **6 Month Warranty on major systems including engines, generator, inverter, air conditioning system, freshwater and head systems!** "Passageway" is a beautiful example of one of the most popular boats of all time, the Grand Banks 42 Classic. The 42 GB has long defined what many people think of when the term "trawler" is used and with good reason. These boats are proven cruising vessels with timeless style, safe and efficient design, comfortable and roomy layout, and top quality construction.

"Passageway" has seen exemplary care by a knowledgeable owner and it shows inside and out. The gelcoat and brightwork shine, the interior is fresh and inviting and there have been numerous updates throughout.

With her 3116 CATs, "Passageway" can cruise an ultra efficient **8.4 knots @ 1250rpm** while only burning **3.5 Gallons Per Hour!** She also has the versatility to get up an move if needed with a top speed of over **18 knots!**

*** Always maintained with the best preventative maintenance including a recent heat exchanger service and coolant flush, updated thru-hulls, fresh varnish, bottom paint, and more!***

Convenient to see in Baltimore's Inner Harbor, just minutes off I-95 and less than 30 minutes from Baltimore Washington International Airport (BWI)!

Основная информация

Тип судна: Траулер

Модельный год: 1996

Год постройки: 1996

Страна: United States

Открытая палуба мостика: Да

Размеры

Длина общая: 49' 8" (15.14m)

Длина по ватерлинии: 41' 1" (12.52m)

Макс. осадка: 4' 2" (1.27m)

Трапы: 23' 3" (7.09m)

Скорость, вместимость и масса

Крейс. скорость: 10 Kts. (12 MPH)

Макс. скорость: 18 Kts. (21 MPH)

Водоизмещение: 36000 Pounds

Вместимость воды: 265 Gallons

Объем топливного бака: 600 Gallons

Размещение

Всего кают: 2

Всего ком. состава: 2

Корпус и палуба

Материал корпуса: Fiberglass

Информация о двигателе

Двигатели: 2

Производитель: Caterpillar

Модель: 3116TA

Тип двигателя: Inboard

Тип топлива: Diesel

ПОДРОБНОЕ ОПИСАНИЕ

Vessel Walkthrough

A rare model with stainless steel handrails (3 entry gates) over teak toe rails. Also a custom made swim platform twice the normal size with s/s swim ladder.

Grand Banks 42 layout: Guest cabin forward with V-berth (filler section for larger sleeping area), solid teak parquet sole and en-suite head with shower (Teak grates), vacuflush toilet and large beveled mirror. The salon offers a straight line galley forward to port, lower helm opposite to starboard. Headliners in perfect condition. Aft of helm is dry bar with U-Line ice maker, a large custom upholstered L-settee with corner table top/storage and classic GB teak hi-low table w/2 leafs. Custom lined draperies throughout. Opposite the salon table, on the port side, is a 2-person custom upholstered settee with corner built-in freezer w/temperature gauge. 26 in. Toshiba flat screen TV and Bose surround sound theater including DVD and CD memory. Storage under all settees. Two GB custom upholstered chairs. Teak overhead grab rail entire length of salon. The aft Master cabin features a centerline island queen berth, large hanging lockers along entire starboard side and two large hanging lockers forward. Many drawers including large drawers under queen berth. Beveled mirror. Solid teak parquet sole. The head is a very functional "split-head" in that the shower stall is on starboard with head and sink to port. Teak grates in shower. Commercial window tinting done in 2008. Sun Screens (new 2010). Raymarine 120 flybridge and lower helm.

Salon

- . Teak cabinetry
- . Solid teak parquet soles
- . Custom lined drapes
- . Custom upholstery settees and (2) custom upholstered chairs
- . Lift-up L-shaped settee (starboard) w/storage under and corner table w/storage
- . Lift-up straight settee (port) w/storage under
- . Bar cabinet with glass and bottle storage
- . Toshiba Regza 26" HD LCD TV
- . Bose Lifestyle Home Theater w/surround sound, DVD + CD memory
- . Bose remotes for inside and upper bridge allowing different listening choices
- . GB fixed hi-low teak table w/2 drop leafs.

- . Formica topped bureaus
- . Grand Banks chrome reading light
- . U-Line ice maker
- . Teak overhead grab rail
- . Roll-up mesh bug screens for both side doors
- . Insect screens for all salon windows except forward window
- . Window locks
- . MarineAire air-conditioning: three zones with reverse-cycle heat
- . Commercial window tinting all side windows & doors
- . Storage drawers under port & starboard salon entry steps

Galley

- . Grunert water cooled holding plate refrigeration (new 6/2008) w/ temperature gauge
- . Grunert holding plate freezer w/temperature gauge
- . Gourmet 3 burner propane cooktop w/oven and broiler (new 2010).
- . Seaward solenoid control for propane.
- . Stainless steel sink w/new single level faucet
- . Formica counters w/pull out shelf, sink covers w/built in cutting boards
- . Samsung microwave
- . Electric exhaust fan with s/s hood over stove
- . Pantry
- . Spice rack
- . Abundant drawers and storage for plates/cups, etc
- . Solid teak parquet soles
- . Dish storage locker forward

Master Stateroom

- . Island Queen centerline berth
- . Teak Bureau (4) drawers
- . (5) additional drawers under berth
- . (6) drawers bed table (port)
- . Book shelf and additional storage under portside table
- . (2) drawers bed table (starboard)
- . Beveled mirror
- . Solid teak parquet sole
- . Lined drapes
- . Large hanging lockers entire port side
- . (2) large hanging lockers forward w/automatic lighting
- . (2) GB chrome reading lights
- . Overhead lights
- . Rear hatch w/screen
- . MarineAire unit
- . (3) windows - (2) slide w/screens
- . (4) 110 outlets
- . 2 large under floor storage lockers

Aft Head (Functional Split Head)

- . Vacuflush toilet (fresh water)
- . Molded corian sink and counter
- . Single lever faucet
- . Beveled mirror
- . Solid teak parquet sole

- . Drapes
- . Teak towel bars
- . Roomy reach-in cabinets and drawers
- . Holding tank monitor
- . 110 GFI
- . Separate shower on starboard
- . Teak grating sole
- . Sump pump
- . Port window, light and hatch
- . Heat and air conditioning

Guest Stateroom

- . V-berth with filler for larger sleeping area
- . (4) drawers under berth
- . Large hanging locker
- . (2) GB chrome reading lights
- . Overhead lights
- . Overhead hatch w/solar fan
- . MarineAire Unit
- . Solid teak parquet sole
- . Door to engine room
- . Under floor storage locker
- . Forward entrance compartment to anchor locker

Guest Head

- . Vacuflush toilet (fresh water)
- . Teak grate
- . Beveled mirror
- . Molded corian sink and counter
- . Single level faucet
- . Wrap around shower
- . Overhead lights
- . Window w/screen and curtain
- . Heat and air conditioning
- . 110 GFI
- . Roomy cabinets and drawers
- . Overhead light
- . Sump pump

Flybridge & Upper Helm

- . Stainless steel handrails
- . Teak decks
- . New seat cushions 2011
- . GB teak table
- . Custom sunbrella canvas bimini (2 pieces) covers entire bridge
- . Side sunbrella canvas curtains
- . Custom made covers for all bridge seating
- . Fore and aft facing bench seats
- . L-settee
- . Overall seating for 12

- . Storage boxes w/teak grates under all seating and teak beds
- . Built in marine stereo speakers in seats
- . Satelite 406 Epirb
- . Raymarine 120 Chartplotter with Sea Talk High Speed Network
- . Sirius weather
- . Camera view to salon
- . Ritchie Compass
- . Trim tabs
- . Glendinning synchronizer
- . Morse engine controls
- . Raypilot 650 Autopilot
- . ICOM IC-M502 VHF w/auto distress
- . Autohelm Tridata wind and speed
- . Autohelm rudder indicator
- . ARC-100 auto spotlight control
- . Windlass control station
- . Bilge pump indicator lights
- . Amp meter, voltmeter, oil pressure, water temp, tachometers
- . Telephone repeater antenna
- . DC phone charger
- . 10 ft 4 in Apex inflatable dinghy w/padded cooler seat, separate pump & nav lights
- . Dinghy oars mounts on tubes & anchor w/75' of braided anchor line
- . Honda 15HP engine (2009)
- . Electric motor on boom for lowering dinghy w/canvas cover
- . Backup winch system for dinghy lift
- . Teak chocks dinghy bed

- . Magma propane grill
- . White exterior sun shades for all salon doors and windows
- . Rear transom canvas cover
- . Name board canvas covers
- . Windlass canvas cover
- . Foredeck windlass foot controls
- . Raw water anchor washdown
- . Custom teak swim platform
- . Spreader lights from mast to cockpit
- . Bruce Anchor
- . Emergency tiller
- . New Groco through hull fittings and strainers for main engines (2012)
- . New blue hoses installed for engines and generator
- . Aft shower hookup
- . Stern trolling rod holder and mount
- . 50 amp - TV + phone cables bow and stern
- . 8 person emergency Swift life raft w/cradle [optional]
- . Air horn
- . Bottom sanded and bottom painted (April 2014)

Lower Helm Station

- . Raymarine E-120 Chartplotter with Sea Talk High Speed Network
- . Sirius weather
- . Raymarine S3G course computer
- . Ritchie Compass
- . Camera view to aft deck and rear

- . Glendinning synchronizer
- . Morse engine controls
- . Raypilot 650 Autopilot
- . ICOM-ICM502 VHF w/auto distress
- . Window wiper controls
- . Autohelm Tridata wind and speed
- . ARC-100 auto spotlight control
- . Windlass control station
- . Amp meter, voltmeter, oil pressure, water temp, tachometers
- . Trim tab controls
- . Air horn

Electrical Equipment

- Mase 8.5 kw generator (new 2002)
- . Xantrex Freedom 3000 Inverter (new 2010)
- . 12 v system
- . 110 v system
- . Bow and stern 50 amp shore power inlets
- . TV & phone inlet at bow and stern

Engine Room

- Twin 3116 T/A Caterpillar Diesels
- . Twin disc ration 2.47:1
- . 2" Aquamet 22 stainless steel shafts
- . Heat Exchangers removed and cleaned (2013)
- . All coolant replaced and system flushed (2013)

- . Racor 900 ma filters
- . 4 blade stone marine 27# props
- . Fuel polishing system
- . Seaward S1900 water heater
- . Paragon PJR0A water pump
- . Groco accumulator tank
- . (3) Rule 2000 GPH bilge pumps
- . (2) Rule 500 GPH bilge pumps
- . Vernatone exhaust mufflers
- . Engine coolant overflow resevoirs
- . Water cooled stuffing boxes
- . Fuel sight gauges for both tanks
- . Holding tank w/macerator pump
- . Fresh water tap
- . 110 receptacle
- . 4 overhead lights
- . Sound insulation on ceiling

Performance

- 1250rpm 8.4 knots 3.5gph
- 1550rpm 9.2 knots 7gph
- 1800rpm 10.5 knots 15gph
- Max rpm 18.7 knots

Disclaimer

While we attempt to display current and accurate data, this listing may not reflect the most recent transactions or may contain occasional data entry errors. Selling agent makes no warranties, express or implied, regarding the content or availability of the products described herein. All inventory listed is subject to availability and prior sale. Please consult selling agent for details.

Prices are quoted for the USA only and may not include transportation, taxes, or other applicable charges. Photographs may be representative only and may vary somewhat from the actual items offered for sale. We will not be responsible for inaccurate data obtained from our site. Please check with your local dealer to ensure that you have the latest information available. Information on this web site could include technical inaccuracies or typographical errors. Changes may be periodically made to the information or the products herein. Questions or comments regarding these policies may be directed to website hosting agent.

Исключения

При продаже яхты исключаются личные вещи владельца.

Отказ от ответственности

Компания предоставляет описание судна или яхты добросовестно, но не может гарантировать точность этой информации, а также не ручается за техническое состояние. Покупатель должен проинструктировать своих агентов или оценщиков исследовать представленную информацию более подробно, по собственному желанию. Продажа судна или яхты, изменение цены или снятие с продажи будет происходить без предварительного уведомления.

ФОТОГРАФИИ

Salon 2



Engine Room



Upper Helm



Profile



Starboard at Dock



Port at Dock



Transom



Boat Deck



Mast



Tender



Flybridge



Side Decks



Salon



Salon 3



Salon Bar & Icemaker



Salon Entertainment



Lower Helm



Lower Helm 2



Galley



Guest Stateroom



Guest Stateroom Lockers



Guest Head



Master Stateroom



Master Stateroom 2



Master Head



Master Shower



Generator



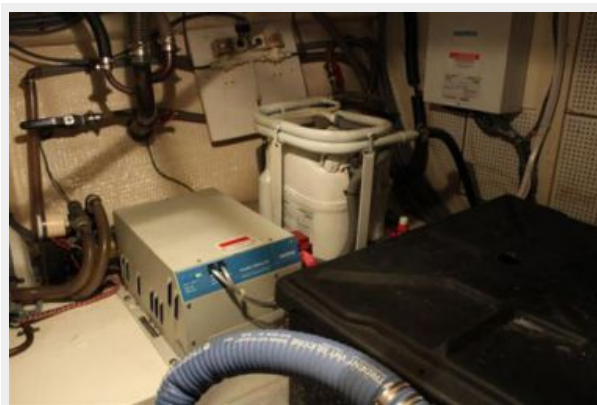
Shaft Seals



Port Engine



Clean Mechanical Space



Engine Room Looking Aft



At Dock



Awesome Boat



Spring 2014 Prep



Fresh Bottom Paint



Spring 2014 Prep 2



Spring 2014 Prep 3



КОНТАКТЫ

Андрей Шестаков (Andrey Shestakov) – ведущий яхтенный брокер отдела продаж яхт и судов компании Shestakov Yacht Sales Inc. Официальный представитель Shestakov Yacht Sales Inc. для русскоговорящих клиентов в центральном офисе компании в Майами/Форт Лодердейл/Флорида/США.

Контактная информация

Email: andrey@shestakovyachtsales.com

Web: shestakovyachtsales.com

Телефоны

Краснодарский край: **+7(918)465-66-44**

США, Майами, Флорида: **+1(954)274-4435**

Время работы

Понедельник – Суббота: **9:00 - 21:00**
EDT

Воскресенье: **Закрито**

Адрес



Harbour Towne Marina, 850 NE 3rd St,
STE 213, Dania, FL 33004