

## LATITUDE ADJUSTMENT — BURGER



**Судостроитель:** BURGER

**Год постройки:** 1975

**Модель:** Моторная яхта

**Цена:** **ЦЕНА ЯХТЫ ПО ЗАПРОСУ**

**Местонахождение:** United States

**Длина общая:** 64' 0" (19.51m)

**Ширина:** 16' 6" (5.03m)

**Макс. осадка:** 4' 10" (1.47m)

**Крейс. скорость:** 15 Kts. (17 MPH)

**Макс. скорость:** 17 Kts. (20 MPH)

Купить **LATITUDE ADJUSTMENT — BURGER** а также выбрать подходящую вам яхту из нашего каталога яхт вам поможет опытный яхтенный брокер Андрей Шестаков. На сегодняшний день компания **Shestakov Yacht Sales Inc.** имеет большое количество яхт в собственном списке продаж, а также тесно сотрудничает со всеми крупными яхтенными производителями по всему миру.

Для того чтобы купить яхту **LATITUDE ADJUSTMENT — BURGER** а также проконсультироваться по любому вопросу связанному с покупкой, продажей, чартером яхт позвоните по телефону **+7(918)465-66-44**.

# ОГЛАВЛЕНИЕ

ОГЛАВЛЕНИЕ	2
ХАРАКТЕРИСТИКИ	5
Обзор	5
Основная информация	5
Размеры	5
Скорость, вместимость и масса	5
Размещение	5
Корпус и палуба	6
Информация о двигателе	6
ПОДРОБНОЕ ОПИСАНИЕ	7
Walkthrough	7
Aft Deck Salon	7
Main Salon	7
Galley	8
Master Stateroom	8
Guest Stateroom	8
Guest Head	8
Crew Quarters	8
Pilothouse	8
Flybridge	9
Deck Equipment	9
Electrical Equipment	9
Engine Room	9
Remarks	10
Exclusions	10
Исключения	10
Отказ от ответственности	10
ФОТОГРАФИИ	11

---

Aft Deck	11
Aft Deck Facing Forward	11
Aft Deck Facing Aft	11
Aft Deck Bar	11
Aft Deck Bar	11
Salon	11
Salon Facing Forward	12
Salon	12
Salon Facing Aft	12
Galley	12
Galley	12
Dinette	12
Entrance To Salon	13
Master Stateroom	13
Master Stateroom	13
Master Stateroom	13
Master Head	13
Guest Stateroom	13
Guest Head	14
Crew Cabin	14
Crew Cabin	14
Ship's Panel	14
Flybridge Access	14
Flybridge	14
Exterior Detail	15
Bow Seating	15
Exterior Detail	15
Engine Room	15
Engine Room	15

---

---

Engine Room	15
Engine Room	16
Engine Room	16
Engine Room	16
Stern	16
Latitude Adjustment	18
Line Drawings	18
<b>КОНТАКТЫ</b>	<b>19</b>
Контактная информация	19
Телефоны	19
Время работы	19
Адрес	19

# ХАРАКТЕРИСТИКИ

## Обзор

**LATITUDE ADJUSTMENT** is one of the last of 28 Burgers built to a well thought out design from Sparkman and Stephens. These hulls are both sea worthy and efficient, capable of cruising at displacement speed very economically or running at planing speeds of 15 knots. **LATITUDE ADJUSTMENT** has been well maintained and is beautifully equipped for cruising by owner operators or with minimal crew. She can sleep 6 in three double staterooms, each with private head and shower.

## Основная информация

Тип судна: Моторная яхта

Подкатегория: Flybridge

Модельный год: 1975

Год постройки: 1975

Страна: United States

Верх: Bimini Top

Открытая палуба мостика: Да

## Размеры

Длина общая: 64' 0" (19.51m)

Ширина: 16' 6" (5.03m)

Макс. осадка: 4' 10" (1.47m)

## Скорость, вместимость и масса

Крейс. скорость: 15 Kts. (17 MPH)

Макс. скорость: 17 Kts. (20 MPH)

Вместимость воды: 420 Gallons

Объем топливного бака: 1500 Gallons

## Размещение

Всего кают: 3

Всего ком. состава: 3

---

## Корпус и палуба

---

**Материал корпуса:** Aluminum

---

## Информация о двигателе

---

**Двигатели:** 2

**Производитель:** Detroit Diesel

**Модель:** 8V71TI

**Тип двигателя:** Inboard

**Тип топлива:** Diesel

---

# ПОДРОБНОЕ ОПИСАНИЕ

---

## Walkthrough

---

**LATITUDE ADJUSTMENT**, featuring custom millwork throughout, offers three cabins which sleep six and three heads with showers.

Entrance through the side deck wing door places you in the full-beam, enclosed, air conditioned aft deck salon, furnished full wet bar, sink, refrigerator, and plenty of seating for entertaining. A hydraulic high top cocktail table raises for dining up to 8 people. An entry gateway in the stern allows access to the custom circular stairs that lead to the custom swim platform. Forward of the aft deck salon is the pilothouse, with helm offering 360 degree visibility for effortless maneuverability and easy access to the flybridge. A raised bench seat with storage underneath is adjacent to the helm. Moving forward and down one deck is the spacious main salon featuring entertainment center, custom wine rack, and a luxurious area to relax and enjoy the ride. Removable floor panels in the salon create an open access to the engine room for service. Aft of the main salon is the first guest cabin with twin beds and copious storage. Across the companionway is the guest head and shower. Completely aft is the master stateroom furnished with king size bed, night stands, reading lights, large his-and-her closets, an ensuite head, and separate shower. Forward and down one level from the main salon is the full-sized galley, perfect for cooking and entertaining. The dinette area is starboard to the port galley. A door in the aft section of the galley also allows easy entrance into the engine room. Forward of the galley is the second guest cabin with head and shower. Sleeping two in full-sized bunk beds, this may double as crew quarters.

New carpeting, July 2015.

## Aft Deck Salon

---

Custom U-shaped aft seating Corian cocktail/dining table Two Rattan chairs Hatch to lazarette Halogen overhead low voltage lights Port and starboard clear wing doors GE washer and dryer placed inconspicuously under counter top Ladder to deck and flybridge Semi circular steps from swim platform to aft deck Wing doors Tide clock & matching barometer Chandelier Teak aft deck Custom Teak headliner Glass side windows Sharp TV flat screen Wet bar with sink & Corian counter top Refrigerator underneath bar

## Main Salon

---

Mid level midship Table /desk with lamp Sony TV FD Trinitron WEGA Carpeting Carpet runner Two Casual chairs Designer lamp Custom wine rack & Book case Side table & lamp Entertainment center Sony disc player JVC DVD player Direct TV receiver Ultra suede headliner Custom built in Storage and file drawers Teak blinds with curtains Low volt indirect

halogen lighting Custom L shaped upholstered couch Storage below upholstered couch  
Antique dark wood oriental coffee table

---

## Galley

---

Magnavox portable TV LG toaster and microwave combo Stainless steel double sinks Black and Decker counter top oven Magic Chef counter top stove with four burners Fisher Paykel drawer dishwasher Black and Decker coffee maker Whirlpool full size side by side refrigerator Lower level forward Dinette A/C controls Four Opening ports Vinyl headliner Dish and food storage Varnished teak sole

---

## Master Stateroom

---

Lower level aft Art work Carpeting Fire extinguisher King size bed Designer covers Vanity lighting Vinyl headliner Panasonic TV Two nightstands Reading lights Designer brass lamp His and hers full width closets Bureau chest with nine drawers Ensuite head and shower Air conditioning and controls Escape hatch to aft deck in port aft locker

---

## Guest Stateroom

---

Lower level aft Carpet Lamp Curtains Air conditioning control Vinyl headliner Framed prints Upper cabinet storage Hanging locker and closet Teak bureau with four drawers Two Single beds Ample storage below beds Panasonic TV

---

## Guest Head

---

Lower level aft Raritan head Soap stone vanity Stall shower Mirrors

---

## Crew Quarters

---

Lower level forward Shower Carpet Teak cabin sole Vinyl headliner Hanging lockers Ensuite head Two opening ports Hatch to foredeck Air conditioning control Upper and lower single beds

---

## Pilothouse

---

Sperry 8T autopilot Koden Radar Garmin GPS Map 4210, New 2014 Uniden ES UM 525 VHF Raised bench seat with storage underneath Electric windshield wiper controls Data marine International depth sounders Wesmar CPS 1000 gyro control stabilizers Wesmar electric powered bow thruster with dedicated battery Carlisle and Finch search light control Glendinning



engine synchronizers Helm bench with chart storage underneath Kidd emergency pull for fire system On main level Lower helm station Hynautic controls Bilge alarms Opening windshield Search light control Trim tab and controls Hart system tank tender Rudder angle indicator Parallel starting switch Koden radar Sperry compass

## Flybridge

Bimini top Helm chair Signal mast Windshield Dinghy chocks Electric boat davit Search light control Rudder indicator Raytheon Ray 220 VHF Hailer Northstar 951X GPS plotter ACR Satellite 406 EPIRB Danforth Constellation compass Data Marine Sand Piper depth Koden radar array antenna Upper control station Two inflatable fenders L-Shaped storage seating Jensen MCD5112 CD stereo Trac Vision M3 KVH dome Nautical 13.5 RIB 2000 with 50-hp Yamaha Six man life raft with hydrostatic release

## Deck Equipment

Wing doors Burger staff Teak handrails Teak toe rails Aluminum bow rail Anchor washdown Deck storage box Built in bow seating Carlisle and Finch searchlight Dual Kahlenberg trumpet horns Fiberglass deck storage box forward Boarding gates in Port and Starboard Ideal windlass electric Anchor 62# stainless steel plow Anchor 50# Danforth spare (lazarette) Nylon anchor line 300 approximately 200 ft. chain Shore power connections Telephone connection Dockside water connection Tide ride boarding ladder Vertical boarding ladder Varnished teak flag staff Varnished teak bow rails and handrails Custom swim platform with fresh water Circular staircase to swim platform

## Electrical Equipment

Sentry 12V/32V, 30 amp, charger Fly 10 amp battery charger Kilo-Pak 18kw gen 120/240 volt 4931 hours as of April 4, 2018 Kilo-Pak 21 kw gen 120/240 volt 1781 hours as of April 4, 2018 Stabiline regulators, ACME transformer Shorepower 115/230 V 50 amp port and starboard Isoboost 50 isolation transformer in aft engine room Two 12V DC 8D in engine room Two banks of four each 8V in Lazarette

## Engine Room

DD 8V-71TI (Repowered 1985), 450 hp Engine hours: Stbd 2635, Port 2300, as of April 4, 2018 Allison M Transmission Dripless shafts Bennett Trim tabs Wesmar stabilizers High water alarms Cruiseair A/C units in seven zones Nibral Bronze props with four blades System 10 watermaker 1,000 gpd Halon fixed unit CO2 extinguishing fire system Rule heavy duty bilge pumps three Hynautic hydraulic steering in two stations Emergency pump seawater p/u (port main engine)

---

## Remarks

---

**LATITUDE ADJUSTMENT** is a perfect yacht for day trips or long range cruising. She has moderate draft and carries sufficient fuel for Bahamas and coastal voyages. The owners' additions of bow thruster, updated navigation aids, and easy access stern boarding stairs plus an original, Burger designed flybridge, make this a must see yacht for the traditional yacht buyer. **LATITUDE ADJUSTMENT** is ready to go.

---

## Exclusions

---

List indicator Personal photographs and items, tools

---

## Исключения

---

При продаже яхты исключаются личные вещи владельца.

---

## Отказ от ответственности

---

Компания предоставляет описание судна или яхты добросовестно, но не может гарантировать точность этой информации, а также не ручается за техническое состояние. Покупатель должен проинструктировать своих агентов или оценщиков исследовать представленную информацию более подробно, по собственному желанию. Продажа судна или яхты, изменение цены или снятие с продажи будет происходить без предварительного уведомления.

# ФОТОГРАФИИ

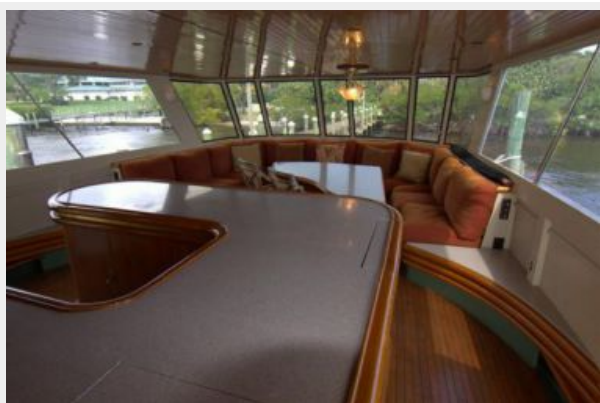
**Aft Deck**



**Aft Deck Facing Forward**



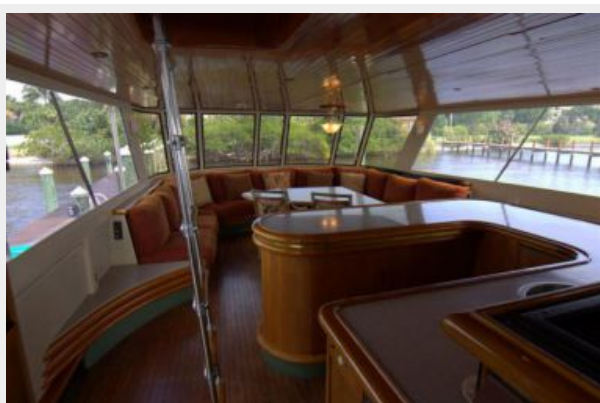
**Aft Deck Facing Aft**



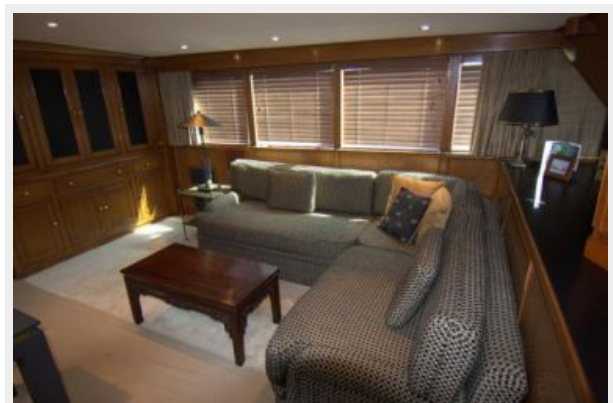
**Aft Deck Bar**



**Aft Deck Bar**



**Salon**



**Salon Facing Forward**



**Salon**



**Salon Facing Aft**



**Galley**



**Galley**



**Dinette**



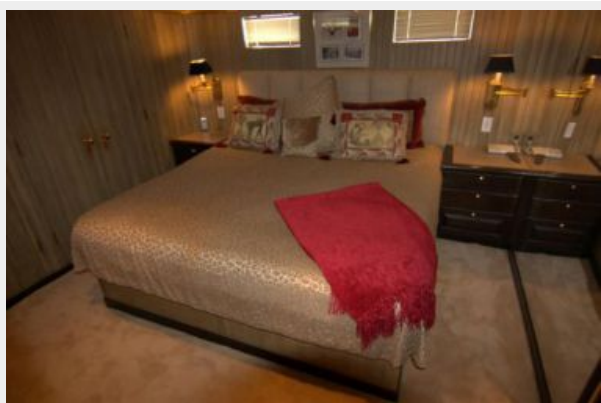
**Entrance To Salon**



**Master Stateroom**



**Master Stateroom**



**Master Stateroom**



**Master Head**



**Guest Stateroom**



**Guest Head**



**Crew Cabin**



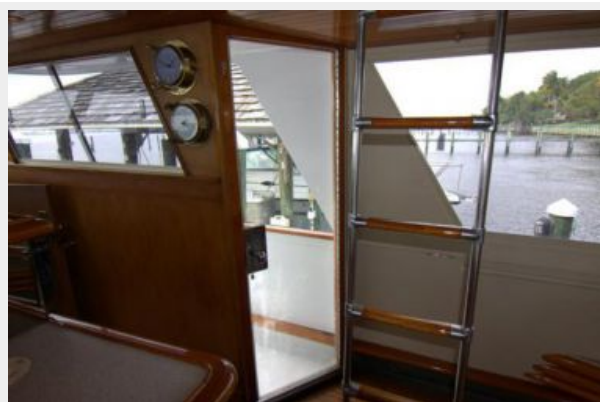
**Crew Cabin**



**Ship's Panel**



**Flybridge Access**



**Flybridge**



**Exterior Detail**



**Bow Seating**



**Exterior Detail**



**Engine Room**



**Engine Room**



**Engine Room**



**Engine Room**



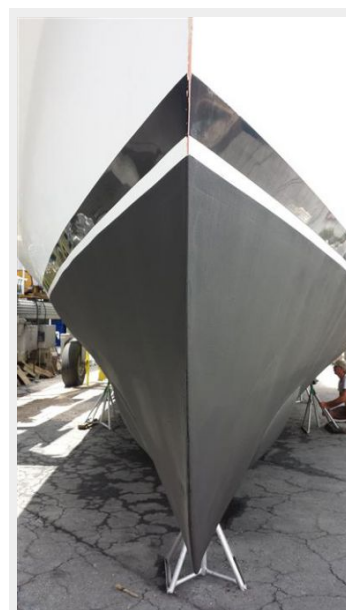
**Engine Room**



**Engine Room**



**Stern**





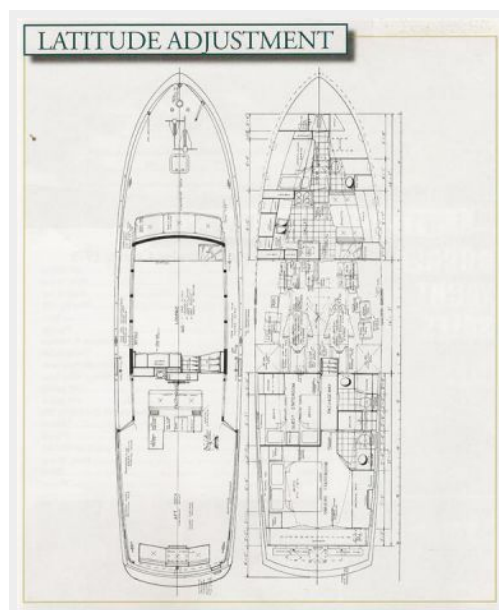




### Latitude Adjustment



### Line Drawings



# КОНТАКТЫ

---

Андрей Шестаков (Andrey Shestakov) – ведущий яхтенный брокер отдела продаж яхт и судов компании Shestakov Yacht Sales Inc. Официальный представитель Shestakov Yacht Sales Inc. для русскоговорящих клиентов в центральном офисе компании в Майами/Форт Лодердейл/Флорида/США.

## Контактная информация

---

Email: [andrey@shestakovyachtsales.com](mailto:andrey@shestakovyachtsales.com)

Web: [shestakovyachtsales.com](http://shestakovyachtsales.com)

## Телефоны

---

Краснодарский край: **+7(918)465-66-44**

США, Майами, Флорида: **+1(954)274-4435**

## Время работы

---

Понедельник – Суббота: **9:00 - 21:00**  
EDT

Воскресенье: **Закрито**

## Адрес

---



Harbour Towne Marina, 850 NE 3rd St,  
STE 213, Dania, FL 33004