

SEA ANGELS — BENETEAU



Судостроитель: BENETEAU

Длина общая: 34' 0" (10.36m)

Год постройки: 2011

Ширина: 13' 1" (3.99m)

Модель: Траулер

Цена: **ЦЕНА ЯХТЫ ПО ЗАПРОСУ**

Местонахождение: Bahamas

Купить **Sea Angels — BENETEAU** а также выбрать подходящую вам яхту из нашего каталога яхт вам поможет опытный яхтенный брокер Андрей Шестаков. На сегодняшний день компания **Shestakov Yacht Sales Inc.** имеет большое количество яхт в собственном списке продаж, а также тесно сотрудничает со всеми крупными яхтенными производителями по всему миру.

Для того чтобы купить яхту **Sea Angels — BENETEAU** а также проконсультироваться по любому вопросу связанному с покупкой, продажей, чартером яхт позвоните по телефону **+7(918)465-66-44**.

ОГЛАВЛЕНИЕ

ОГЛАВЛЕНИЕ	2
ХАРАКТЕРИСТИКИ	4
Основная информация	4
Размеры	4
Скорость, вместимость и масса	4
Размещение	4
Корпус и палуба	4
Информация о двигателе	4
ПОДРОБНОЕ ОПИСАНИЕ	5
Vessel Walkthrough	5
Partial List of Equipment Includes:	5
Remarks	6
Исключения	6
Отказ от ответственности	6
ФОТОГРАФИИ	7
Salon	7
Salon	7
Galley	7
Galley	7
Lower Helm	8
Lower Helm	8
Port Guest Stateroom	8
Head/Shower	8
Master Suite	9
Master Suite	9
Master Suite	9
Upper Helm	9
Dinghy W/Electric winch and davit	9

Bow	9
Cockpit	10
Upper Settee and Table	10
Sunning Pad	10
Engine Room	11
Aft Lazzerette/Generator/Storage	11
Sea Angels	11
КОНТАКТЫ	12
Контактная информация	12
Телефоны	12
Время работы	12
Адрес	12

ХАРАКТЕРИСТИКИ

Основная информация

Тип судна: Траулер

Модельный год: 2011

Год постройки: 2011

Страна: Bahamas

Размеры

Длина общая: 34' 0" (10.36m)

Ширина: 13' 1" (3.99m)

Скорость, вместимость и масса

Водоизмещение: 16466 Pounds

Размещение

Всего кают: 2

Корпус и палуба

Материал корпуса: Fiberglass

Информация о двигателе

Двигатели: 1

Производитель: Cummins

Модель: QSB5.9I

Тип двигателя: Inboard

Тип топлива: Diesel

ПОДРОБНОЕ ОПИСАНИЕ

Vessel Walkthrough

The Beneteau Swift Trawler is a very spacious boat for its class. The Swift Trawler 34 features a two stateroom one head layout with an optional double berth that pulls out from the sofa. Entering the salon is a large sofa to Starboard that also pulls out to a double berth. To port you will find large cabinets with plenty of storage, a flat screen TV, and entertainment area. Forward of the salon to Port is a U-Shaped kitchen with double sink, dishwasher, microwave/convection oven, stove, refrigerator and functional windows for great ventilation. Forward and Starboard is the Lower Helm Station. The Helm features comfortable seating for 2 with an adjustable forward and rear sliding seat. A unique feature Beneteau added is an optional drop down platform for better viewing visibility for height restricted captains. Also, easily accessible controls at arm's reach combined with great forward and aft viewing complete the helm area.

The Master Stateroom is forward and features a Queen size Island berth. The Island berth also lifts up for additional storage below. There are two hanging closets and lots of other storage compartments as well. Great lighting from the above hatch and port holes highlight the Master Stateroom. Moving aft and to Port is the guest stateroom featuring a double bunk layout. Adequate standing room and plenty of storage under the lower bunk and drawers provide ample storage accommodations for guest. Across the companionway to Starboard is the Head and Shower with "custom double mirror". Multiple shelves and cabinets complete the head to accommodate storing essentials and toiletries.

In the cockpit is a large deck area large enough for two deck chairs. Included is a full cockpit enclosure giving the option to air condition the aft cockpit. Sea Angels also includes a combo unit washer/dryer mounted behind the stainless steel bridge ladder. Under the deck with access through a hatch provides a large storage area for dry goods or supplies as well as the generator. The asymmetrical deck (larger to starboard) provides walkways to forward where there is a large sunning pad and anchor locker (which includes an added 200' of chain).

On the flybridge forward to port you will notice a long L-shaped settee and teak table. To Starboard is the upper helm area and driver's seat with a second full set of controls and electronics. On the aft flybridge deck included is the 2011 Caribe 8.3' inflatable dingy. Powering the dingy is a Mercury 9.9hp converted over to electric start. Sea Angel's also converted the boom and winch to 12 volt electric with an independent battery and charging system.

Partial List of Equipment Includes:

- 2011 Caribe 8.3 inflatable with 9.9 Mercury **(Electric Start)
- Larger 425hp Cummins QSB5.9l Diesel engine
- Bow Thruster (upper and lower station)
- Stern Thruster (upper and lower station)
- Trim Tabs (Upper and Lower station)
- Anchor windlass *** (with added 200' of chain)
- Dual reverse cycle air conditioning / heat systems
- Cummins 7.5KW Generator **(386.2 Hours)

•Washer / Dryer Combo Unit •Microwave / Convection Oven •2 Burner Stove •Dishwasher
•Optional Full Aft Deck Enclosure Cover •Raymarine Color Chart Plotter C95 (With Platinum Chip) – GPS, Sounder, and Radar combo •Raymarine 48nm Radar •Raymarine digital speed/depth •Autopilot •Raymarine ray240VHF Radio (Upper and Lower station) •Hot/Cold cockpit Shower •Stereo / CD Player •2 Flat screen TV's •Custom Double mirror in Head / Shower
•Leather Upholstery •Main Salon Privacy Curtain •Bimini over Flybridge •Full Cover for Caribe inflatable tender •Quiet flush electric toilet •Ice Maker •Full front window cover •Cover for Starboard entry door

Remarks

Sea Angels is a very meticulously maintained vessel in Bristol condition. There are no exceptions when it comes to the maintenance and condition of this vessel. Swift Trawlers are one of the most efficient trawlers in the industry. Sea Angels cruises at a comfortable 16knts and burns just over 14/gal hr giving a range of approx. 241 nautical miles! With a top speed around 21 knts at 18.6 gal/hr and a range just over 220 nautical miles makes this trawler not only fast but extremely efficient. If you are looking for one of the cleanest ready to go trawlers on the market then don't pass this up! This must see boat is located in Jensen Beach and is available to show. Please call if you have any questions or would like more information.

Исключения

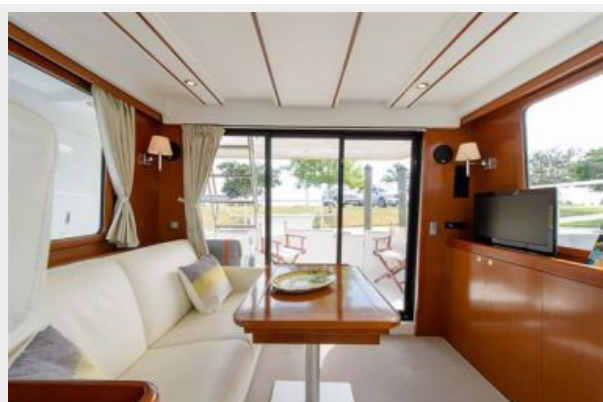
При продаже яхты исключаются личные вещи владельца.

Отказ от ответственности

Компания предоставляет описание судна или яхты добросовестно, но не может гарантировать точность этой информации, а также не ручается за техническое состояние. Покупатель должен проинструктировать своих агентов или оценщиков исследовать представленную информацию более подробно, по собственному желанию. Продажа судна или яхты, изменение цены или снятие с продажи будет происходить без предварительного уведомления.

ФОТОГРАФИИ

Salon



Salon



Galley



Galley



Lower Helm



Lower Helm



Port Guest Stateroom



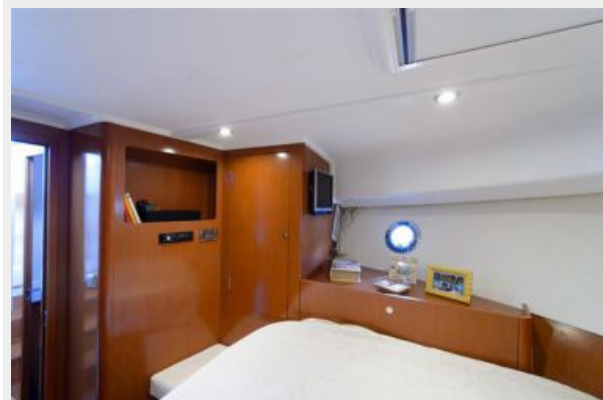
Head/Shower



Master Suite



Master Suite



Master Suite



Upper Helm



Dinghy W/Electric winch and davit



Bow



Upper Settee and Table



Cockpit



Sunning Pad



Engine Room



Aft Lazzerette/Generator/Storage



Sea Angels



КОНТАКТЫ

Андрей Шестаков (Andrey Shestakov) – ведущий яхтенный брокер отдела продаж яхт и судов компании Shestakov Yacht Sales Inc. Официальный представитель Shestakov Yacht Sales Inc. для русскоговорящих клиентов в центральном офисе компании в Майами/Форт Лодердейл/Флорида/США.

Контактная информация

Email: andrey@shestakovyachtsales.com

Web: shestakovyachtsales.com

Телефоны

Краснодарский край: **+7(918)465-66-44**

США, Майами, Флорида: **+1(954)274-4435**

Время работы

Понедельник – Суббота: **9:00 - 21:00**
EDT

Воскресенье: **Закрито**

Адрес



Harbour Towne Marina, 850 NE 3rd St,
STE 213, Dania, FL 33004