

## OASIS — MERIDIAN



**Builder:** MERIDIAN

**Year Built:** 2005

**Model:** Motor Yacht

**Price:** PRICE ON APPLICATION

**Location:** United States

**LOA:** 45' 0" (13.72m)

**Beam:** 14' 4" (4.37m)

**Max Draft:** 3' 10" (1.17m)

**Cruise Speed:** 19 Kts. (22 MPH)

Our experienced yacht broker, Andrey Shestakov, will help you choose and buy a yacht that best suits your needs Oasis — MERIDIAN from our catalogue. Presently, at Shestakov Yacht Sales Inc., we have a wide variety of yachts available on our sale's list. We also work in close contact with all the big yacht manufacturers from all over the world.

If you would like to buy a yacht Oasis — MERIDIAN or would like help answering any questions concerning purchasing, selling or chartering a yacht, please call +1(954)274-4435

# TABLE OF CONTENTS

TABLE OF CONTENTS	2
SPECIFICATIONS	5
Overview	5
Basic Information	5
Dimensions	5
Speed, Capacities and Weight	5
Accommodations	5
Hull and Deck Information	6
Engine Information	6
DETAILED INFORMATION	7
Vessel Walkthrough	7
Salon	8
Galley	8
Master Stateroom	9
Master Head	9
VIP Stateroom	9
Guest Head	9
Helm and Electronics	10
Flybridge	10
Electrical System	10
Engine Room	11
Aft Deck	11
Cockpit	11
Hull and Deck	12
Exclusions	12
Broker Remarks	12
Exclusions	12
Disclaimer	12

PHOTOS	14
Salon Windows to Port	14
Salon looking Starboard	14
Salon-Entertainment Center and Storage Starboard	14
Salon looking Forward	14
Salon looking Aft	15
Salon-Entrance to Master	15
Galley	15
Galley	15
Galley- Washer Dryer Combo and Storage in Floor	16
Master Stateroom Berth	16
Master Stateroom- Sliding Doors to Cockpit	16
Master Head-Separate Head and Shower	16
Master Stateroom- Entrance to Shower and Head	16
VIP Stateroom to Berth	16
VIP Stateroom Head- Walk-in-Shower	17
VIP Stateroom to Port	17
VIP Stateroom Head	17
Electrical-Master Panel	17
Flybridge-Entrance to Salon	18
Flybridge Fridge and Port Seating	18
Flybridge Helm Seating	18
Helm	18
Helm- Docking on Command Joystick	18
Engine Room	18
Cockpit-Custom Davit	19
Engine Room	19
Engine Room	19
Bilge	19

---

Bilge	19
Cockpit-Genset and Storage	19
Hull	20
Bow	20
Hull Custom Hardtop	20
Hull and Stern View	20
LED Lighting	20
Port Profile	20
CONTACTS	21
Contact details	21
Telephones	21
Office hours	21
Address	21

---

# SPECIFICATIONS

---

## Overview

---

Oasis is an immaculate, low hour example of Meridian's 459 Cockpit Motoryacht. She is unique in that she has a custom flybridge hardtop, a dinghy davit on her transom and she is priced to sell immediately. Compare the competition and you will put Oasis on the top of your list!

## Basic Information

---

**Category:** Motor Yacht

**Sub Category:** Flybridge

**Model Year:** 2005

**Year Built:** 2005

**Country:** United States

**Vessel Top:** 2363

**Fly Bridge:** Yes

**Cockpit:** Yes

## Dimensions

---

**LOA:** 45' 0" (13.72m)

**Beam:** 14' 4" (4.37m)

**Max Draft:** 3' 10" (1.17m)

## Speed, Capacities and Weight

---

**Cruise Speed:** 19 Kts. (22 MPH)

**Displacement:** 31000 Pounds

**Water Capacity:** 90 Gallons

**Holding Tank:** 55 Gallons

**Fuel Capacity:** 330 Gallons

## Accommodations

---

**Total Berths:** 2

**Sleeps:** 6

**Total Heads:** 2

---

## Hull and Deck Information

---

**Hull Material:** Fiberglass

**Deck Material:** Fiberglass

**Hull Configuration:** Planing

**Hull Color:** WHITE

**Hull Finish:** Plastic

---

## Engine Information

---

**Engines:** 2

**Manufacturer:** Cummins

**Model:** DIAMOND 370

**Engine Type:** Inboard

**Fuel Type:** Diesel

---

# DETAILED INFORMATION

---

## Vessel Walkthrough

---

Oasis is a perfect example of how a yacht can be both beautiful AND functional. Oasis' interior layout features two huge staterooms that are separated by the salon and galley, creating a very private layout for two couples on an extended getaway. Rich cherry wood cabinetry, designer fabrics and high quality carpet make the interior of Oasis show like new. The forward stateroom truly has the amenities and space of most master staterooms. It features a centerline double berth, hanging locker, storage cabinet, entertainment center and private entry to a full-size head. The forward head has a separate stall shower, sink, vanity with mirror and, of course, a Vacuflush toilet.

The galley is just aft and to port with large Karadon solid surface countertops and ample storage. She has a large refrigerator with separate freezer, microwave, built-in coffeemaker, flush mount cooktop and large sink- perfect for entertaining friends over a long weekend. Under the steps and aft to the salon is a large "basement" which houses the Splendide combomatic washer/dryer.

The salon is gigantic and is surrounded by full-length side windows that provide a plethora of natural lighting. To starboard is an L-shaped settee with storage beneath and a beautiful cherry hi/lo table. To port is a long settee that converts to a sleeper and recliner. The entertainment center is aft with a large flatscreen TV that is mated to a new KVH Sat TV dome as well as a full surround sound audio system. Next to the entertainment system is a full-size master distribution panel. Beneath the salon floor is a large engine access hatch, which leads to a very well laid out engine room. Oasis' engine room is absolutely immaculate in every way.

The master stateroom entry is to port and aft of the salon and down a few steps. There is a well-designed walkaround queen berth athwartships, two hanging lockers, storage lockers, and entertainment center. Another great feature is that there's a separate shower and head entrance, separated by a vanity with a sink, mirror and storage between the two compartments. And finally, there's a large sliding glass door aft that gives direct access to the cockpit- perfect for those cool evening sea breezes.

Moving up to the flybridge, one will immediately notice one of the best, if not THE best feature on Oasis- the hardtop. She is the only 459 on the market with an optional hardtop, which eliminates the high-maintenance and troublesome canvas bimini enclosure found on other 459's. The seating layout features a centerline helm seat with excellent visibility. There is a companion seat to port and a large wraparound seating area (with updated designer fabrics) to starboard and aft of the helm. Plenty of room for 7 or 8 of your closest friends. There's also a refrigerator to keep the drinks cool on a cruise!

The aft deck has a full-length seat and there's a wet bar with sink, storage cabinet and even an icemaker next to the companionway door to the salon. One will also notice the plexiglass wing doors for entry onto the wide side decks and protection from the elements, when necessary. The

wide side decks provide safety and ease of line handling, another great design feature of the 459.

Moving down a few easy steps is the final awesome feature of Oasis- the cockpit with optional dinghy davit. Oasis' cockpit is ideal for any type of water sport or just makes it easy to board the boat from a dock or dingy. Her custom davit can lift a RIB dinghy or a full-size personal watercraft! If you are looking for a cruising yacht, Oasis has just about everything one would find in vessels twice her size.

---

## Salon

---

- Two-tier integrated window system with custom blinds
- Cherry table, high/low
- End tables with 110v outlet
- Storage cabinets
- Overhead courtesy lights
- 110v outlet, ground fault protected
- (3) engine access hatches
- Carpet in excellent shape
- Ultra-leather sofa bed and recliner to port
- L-shaped ultra-leather settee to starboard
- Cherry trim throughout
- JVC DVD digital theater system
- DirectTV and KVH satellite system (New 2014)

---

## Galley

---

- Karadon solid surface counter tops
- Teak and holly flooring
- Large stainless-steel sink, with pull-out faucet and poly cutting board
- Norcold refrigerator/freezer
- Origo recessed cook top: (3) burner electric
- Samsung convection microwave
- Cuisinart coffee maker
- (6) storage drawers
- Storage cabinets
- 110v outlet, GFCI
- Overhead lights
- Floor storage with concealed drawers
- Washer /dryer combo under stairs to down to galley



---

## Master Stateroom

---

- Stainless steel framed opening port lights with screens (2)
- Locking sliding door aft
- Island berth : Queen size innerspring pillow-top mattress with storage below
- Padded headboard
- Hanging locker (2)
- Overhead and reading lights
- Telephone jack and power outlet
- Bureau with 3 drawers
- GFCI power outlet

---

## Master Head

---

- Separate head and shower entries
- Vanity cabinet with molded sink and storage under
- Medicine cabinet with mirrored door
- Separate shower - enclosed shower stall molded fiberglass
- Vacu-Flush head system
- Overhead lights
- GFCI power outlet
- Tower bars

---

## VIP Stateroom

---

- Raised double island berth with innerspring pillow-top mattress and storage below
- Drawers under berth (2)
- Large hanging locker cabinets (2)
- Overhead and reading lights
- Stainless steel portlights screened, opening (2)
- Telephone jack, 12v outlet
- Ensuite door to head
- Toshiba TV w/ DVD
- A/C Control

---

## Guest Head

---

- Entry from salon and VIP stateroom
- Vanity cabinet with molded sink and storage under
- Medicine cabinet with mirrored door
- Shower enclosed shower stall molded fiberglass

- Vacu-Flush head system
- Stainless steel port light, opening and screened (1)
- GFCI power outlet

---

## Helm and Electronics

---

- Raymarine Pathfinder RL80C GPS/Plotter/Radar combo
- Raymarine ST6001 auto pilot
- Auto search light
- "Docking On Command" system with bow and stern thrusters(Sidepower)
- Raymarine ST40 depth
- Fusion marine stereo on bridge with remote on aft deck
- Raymarine VHF Radio
- Norcold refrigerator on the bridge
- Single bucket helm seat with flip-up bolster
- Dual engine controls
- Trim tabs controls
- Compass, illuminated
- Rocker switch controls with dc breaker panel
- Sunbrella striped fabric
- Tilt wheel

---

## Flybridge

---

- Custom hardtop
- L-shaped lounge with removable cushions and stowage under
- (6) beverage holders
- (2) courtesy lights, steps and sole
- 12v adapter
- Windscreen: Venturi, aluminum frame, smoke tint
- Hot and cold hand shower
- Stainless steel rails
- Single station spotlight

---

## Electrical System

---

- Onan diesel generator- 479 hours
- AC/DC distribution panel with magnetic breakers
- TV/telephone hook-up

- Twin 30 amp electrical outlets with shore power cords
- Horn 12v
- Lighting fixtures 12v
- (2) house batteries
- (4) engine start batteries
- Battery switches (4)
- Battery charger/converter
- GFCI protection on all outlets

---

## Engine Room

---

- Twin Cummins 370 Diamond series diesel engines with 539 hours
- Engine room immaculate and engines look like new!!
- Salon floor access panels
- Overhead lighting
- Access ladder
- Acoustical and thermal insulation
- Internal sea strainers
- Rule bilge pumps (4) manual and automatic
- Water system: pressure demand (hot/cold)
- 11 gallon water heater
- Macerator

---

## Aft Deck

---

- Aft cabin entrance door with screen
- Molded fiberglass steps to bridge
- Molded steps to side decks
- (3) stowage lockers in fiberglass dodger
- Transom access door
- Hardtop over aft deck with (2) integrated stainless steel grab handles
- Overhead and step courtesy lighting
- (2) wing doors acrylic with aluminum frame
- Wet bar with U-Line icemaker
- Molded lounge with table

---

## Cockpit

---

- Sliding door access to master stateroom
- 12v courtesy lighting
- Lazarette access hatched through cockpit

- Self bailing cockpit
- Transom storage
- Shore water connection
- Molded swim platform
- Transom door access to swim platform
- Molded staircase to aft deck
- Molded steps to deck trails with fender storage
- Custom dinghy/PWC davit on transom

---

## Hull and Deck

---

- Diamond non-skid
- (7) 12" stainless-steel mooring cleats
- Stainless-steel framed opening port lights with screens
- Under water exhaust
- Anchor roller and anchor line locker on foredeck
- Welded stainless steel deck rails, through-bolted to deck
- Shore water connection
- Molded swim platform with telescoping board ladder
- Bonded, tinted windows add a positive window seal
- Opening salon windows
- Through-hull fittings
- Freshwater wash down (fore and aft)
- Windlass

---

## Exclusions

---

Owners personal belongings.

---

## Broker Remarks

---

Very well-kept boat that shows much newer. owner moving to sport-fish and needs this one sold.

---

## Exclusions

---

Owner's personal belongings.

---

## Disclaimer

---

The Company offers the details of this vessel or yacht in good faith but cannot guarantee or warrant the accuracy of this information nor warrant the condition of the vessel. A buyer should instruct his representatives, agents, or his surveyors, to investigate such details as the buyer desires validated. This vessel or yacht is offered subject to prior sale, price change, or withdrawal without notice.

# PHOTOS

**Salon Windows to Port**



**Salon looking Starboard**



**Salon looking Forward**



**Salon-Entertainment Center and Storage  
Starboard**



**Salon looking Aft**



**Salon-Entrance to Master**



**Galley**



**Galley**



**Galley- Washer Dryer Combo and Storage in Floor**



**Master Stateroom Berth**



**Master Stateroom- Sliding Doors to Cockpit**



**Master Head-Separate Head and Shower**



**Master Stateroom- Entrance to Shower and Head**



**VIP Stateroom to Berth**





### VIP Stateroom Head- Walk-in-Shower

### VIP Stateroom to Port



### VIP Stateroom Head



### Electrical-Master Panel



**Flybridge-Entrance to Salon**



**Flybridge Fridge and Port Seating**



**Flybridge Helm Seating**



**Helm**



**Helm- Docking on Command Joystick**



**Engine Room**



**Cockpit-Custom Davit**



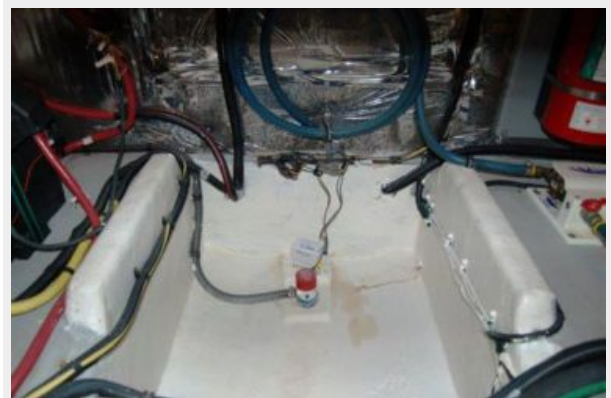
**Engine Room**



**Engine Room**



**Bilge**



**Bilge**



**Cockpit-Genset and Storage**



**Hull**



**Bow**



**Hull Custom Hardtop**



**Hull and Stern View**



**LED Lighting**



**Port Profile**



# CONTACTS

---

Andrey Shestakov, leading yacht broker of the sales department of Shestakov Yacht Sales Inc. Shestakov Yacht Sales Inc., the official representative of the Miami/Fort Lauderdale FL headquarters.

## Contact details

---

Email: [andrey@shestakovyachtsales.com](mailto:andrey@shestakovyachtsales.com)

Web: [shestakovyachtsales.com/en/](http://shestakovyachtsales.com/en/)

## Telephones

---

USA: +1(954)274-4435

## Office hours

---

Monday – Saturday: **9:00 - 21:00** EDT

Sunday: **closed**

## Address

---



Harbour Towne Marina, 850 NE 3rd St,  
STE 213, Dania, FL 33004