

SHE'S BACK — TIARA



Builder: TIARA

Year Built: 2008

Model: Cruiser

Price: PRICE ON APPLICATION

Location: United States

LOA: 43' 0" (13.11m)

Beam: 14' 9" (4.50m)

Min Draft: 3' 7" (1.09m)

Cruise Speed: 29 Kts. (33 MPH)

Max Speed: 33 Kts. (38 MPH)

Our experienced yacht broker, Andrey Shestakov, will help you choose and buy a yacht that best suits your needs **She's Back — TIARA** from our catalogue. Presently, at Shestakov Yacht Sales Inc., we have a wide variety of yachts available on our sale's list. We also work in close contact with all the big yacht manufacturers from all over the world.

If you would like to buy a yacht **She's Back — TIARA** or would like help answering any questions concerning purchasing, selling or chartering a yacht, please call **+1(954)274-4435**

TABLE OF CONTENTS

TABLE OF CONTENTS	2
SPECIFICATIONS	5
Overview	5
Basic Information	5
Dimensions	5
Speed, Capacities and Weight	5
Accommodations	6
Hull and Deck Information	6
Engine Information	6
DETAILED INFORMATION	7
Overview	7
Salon	7
Galley	7
Master Stateroom	7
Master Head	8
Guest Stateroom	8
Guest Head	8
Upper Cockpit	9
Lower Cockpit	9
Electronics	9
Electrical System	10
Helm	10
Engine Room	10
Maintenance	10
Deck-Bow	11
Transom	11
Exclusions	11
Disclaimer	11

PHOTOS	12
Port Side	12
Salon/Dinette entry door from deck	12
Salon	12
Power Panel	12
Salon	12
Salon TV	12
Galley	13
Galley	13
Galley	13
Master Stateroom	13
Master Berth Storage	13
Master Stateroom TV	13
Master Head	14
Master Head	14
Master Head	14
Guest Stateroom	14
Guest Stateroom TV	14
Guest Head	14
Guest Head	15
Guest Shower	15
Upper Cockpit	15
Upper Cockpit	15
Helm	15
Hard Top	15
Helm Electronics	16
Helm Electronics	16
Upper Cockpit Seating	16
Helm Seating	16

Lower Cockpit Seating	16
Lower Cockpit Wet Bar	16
E-Pirb	17
Engine Room	17
Engine Room	17
Engine Room	17
Engine Room	17
POD	17
Engine Room	18
Engine Room	18
Bow	18
Bow	18
Stbd Profile	18
Stbd Side	18
Swim Deck	19
Swim Deck	19
CONTACTS	20
Contact details	20
Telephones	20
Office hours	20
Address	20

SPECIFICATIONS

Overview

The Tiara 4300 Sovran is the best selling Tiara ever built. The success comes from 3 ingredients: Tiara quality, coupe design with full climate controlled upper cockpit/helm area, and the revolutionary Volvo IPS with Joystick for docking. The floor plan offers the ability to sleep 4 on 2 berths, 2 heads and a very large galley. You will find "She's Back" in great condition inside and out!!!

Seller will consider smaller trades.

Basic Information

Category: Cruiser

Sub Category: Express

Model Year: 2008

Year Built: 2008

Country: United States

Vessel Top: Hardtop

Dimensions

LOA: 43' 0" (13.11m)

Beam: 14' 9" (4.50m)

Min Draft: 3' 7" (1.09m)

Speed, Capacities and Weight

Cruise Speed: 29 Kts. (33 MPH)

Max Speed: 33 Kts. (38 MPH)

Displacement: 26800 Pounds

Water Capacity: 110 Gallons

Holding Tank: 50 Gallons

Fuel Capacity: 375 Gallons

Accommodations

Total Cabins: 2

Sleeps: 4

Total Heads: 2

Hull and Deck Information

Hull Material: Advanced Composites

Hull Configuration: Deep Vee

Hull Color: White

Engine Information

Engines: 2

Manufacturer: Volvo

Model: IPS 600

Fuel Type: Diesel

DETAILED INFORMATION

Overview

The Tiara 4300 Sovran is the best selling Tiara ever built. The success comes from 3 ingredients: Tiara quality, coupe design with full climate controlled upper cockpit/helm and two 16,000 BTU A/C heat systems, and the revolutionary Volvo IPS with Joystick for docking. She's back has been very well maintained as the seller's brother is a Volvo marine dealer. The floor plan offers the ability to sleep 4 on 2 berths, 2 heads and a very large galley. You will find "She's Back" in great condition inside and out!!!

Salon

- Solid teak & holly cabin sole
- (3) Bomar low profile extruded aluminum forward deck hatches w/ adjusters & built-in Ocean Air screens & privacy covers
- Starboard U-shaped dining area w/seating for 4-5
- Large dining table
- Storage cabinets
- Storage under settee
- 26" flat screen LCD TV
- Bose Lifestyle 18 AM/FM stereo w/ CD integrated DVD & concealed speakers
- Marine Air Systems 16,000 BTU air conditioner

Galley

- Corian countertop
- Isotherm over-under refrigerator/freezer - 8.5 cu. ft. AC/DC
- Microwave convection oven
- Recessed 2-burner electric cook top w/ Corian cover & safety shut-off switch
- (2) Stainless steel under mounted sinks w/ Corian covers & hot/cold water faucet
- Upper and lower cabinet storage
- Storage for cook top & sink covers
- Double trash bin
- Waste basket
- Exhaust fan
- GFCI outlets

Master Stateroom

- Full frame teak door separating the master stateroom from the salon

- Queen size island berth
- Manually actuated pedestal berth w/ pillow top innerspring mattress
- Storage compartments under berth
- Cedar backed hanging locker- stbd
- Port & starboard overhead storage cabinets
- Reading lights
- 19" flat screen LCD TV
- 12V DVD player
- Marie Air System 6,000 BTU air conditioner w/ reverse cycle heat
- Private entry to forward master head

Master Head

- Avonite inlay floor
- Corian vanity countertop w/ clear glass vessel sink
- Lighted upper medicine cabinet w/ mirror
- Lower vanity storage
- VacuFlush toilet
- Fiberglass shower stall w/ glass door shower sump pump
- Exhaust fan
- Air conditioning discharge/vent
- 110V GFCI outlet

Guest Stateroom

- Twin berths w/ deep quilted innerspring mattresses, bed quilts, & (2) pillow shams
- Mirror on starboard bulkhead in addition to upholstered headboards
- Cedar backed hanging locker
- Storage cabinets
- 19" flat screen LCD TV
- 12V DVD player
- Marine Air System 6,000 BTU air conditioner w/ reverse cycle heat
- Emergency egress through upper cockpit floor

Guest Head

- Full frame door w/ entry from guest stateroom
- Corian vanity countertop w/ clear glass vessel sink
- Lighted upper medicine cabinet w/ mirror
- Lower vanity storage
- VacuFlush toilet w/ cover

- Fiberglass shower w/ sump pump & shower curtain

Upper Cockpit

- Tiara custom composite hardtop integrated w/ windshield
- (2) 16,000 BTU air conditioner
- Solid side glass enclosures and aft curtain w/ zippered entryway
- (7) privacy covers
- (2) Bomar low profile extruded aluminum hatches w/ built-in Ocean Air screens
- Tiara hinged helm console w/ digital engine monitoring display, recessed cup holder, clock, 12V accessory outlet, & 17.5" mahogany steering wheel
- Port side navigation center including chart storage w/ white acrylic lid & cup holders
- Bench style helm seat electrically actuated fore and aft w/ storage below
- Curved companion lounge w/ cup holders & fiberglass table
- Seating for five people
- ACR RCL 100 Remote spotlight
- Intra red & white LED lighting
- Port light w/ privacy cover for aft stateroom located below lounge

Lower Cockpit

- Fiberglass table
- Seating for six people
- Cockpit wet bar: sink, cup holders, and refrigerator
- Audio System: Sony AM/FM CD stereo system w/ remote, Clarion iPod interface, amp, subwoofer, and (4) speakers (2 in hardtop & 2 in aft cockpit)

Electronics

- (2) E120 12'1" multifunction color displays
- DSM300 digital sounder module
- 4kw Open array
- ST8001 IPS autopilot
- Raymarine Electronics
- Speed, Depth, Temperature, Transducer
- RS125 Raystar GPS antenna
- ST60 Graphic display
- Ray 240 VHF radio
- Sea Tel SAT TV

Electrical System

- Onan 11.5 kw diesel generator w/ 2,044 hrs
- Sound shield and gen sep - extra quiet
- 50 Amp 240 shore cord - 65' long
- Glendinning cable recoiler
- Victron 100 amp charger
- (8) Batteries
- 20g water heater

Helm

- Joystick docking system
- Tiara custom composite windshield integrated into hardtop w/ tempered safety glass
- Power opening center section
- (3) Imtra windshield washer/ wipers
- Safety handrails
- Aurora Corian dash insert
- Volvo Penta single display digital engine monitoring system w/ fuel level & rudder angle indicators; separate volt meters for engine & house batteries
- Volvo Penta electronic engine controls & steering system
- Ritchie SS-2000 compass

Engine Room

- (2) Volvo IPS D6-600 Diesels
- 435 HP each
- Village Marine Watermaker
- Macerator system for holding tank
- (4) bilge pumps w/ monitors
- (4) 12V fluorescent lights
- FE-241 agent automatic/manual fire extinguisher system for engine room
- Kahlenber chrome dual trumpet air horn
- Brownie's YachtDiver Compressor

Maintenance

- Full engine and generator service - July 2014
- New bottom paint and prop seed - May 2014
- Pod's service - November 2013

Deck-Bow

- Foredeck sun pad w/ cover and cup holders
- 316L stainless steel handrail
- (8) stainless steel cleats for lines (4-12" cleats & 4-10" cleats)
- Windlass: automatic rope/chain operable by foredeck foot pedal or remote switch at helm, 10" stainless steel cleat, 40' chain rode , 200' rope rode, and Delta galvanized 35lb anchor

Transom

- 52" integrated swim platform w/ (4) pad eyes and a slide out stainless steel swim ladder
- Hot & cold cockpit shower
- Transom storage compartment w/ fiberglass liner and one-piece door actuated w/ gas springs
- Fresh water washdown outlet w/ stainless steel fittings and 25 ft. coiled blue hose

Exclusions

Owner's personal belongings.

Disclaimer

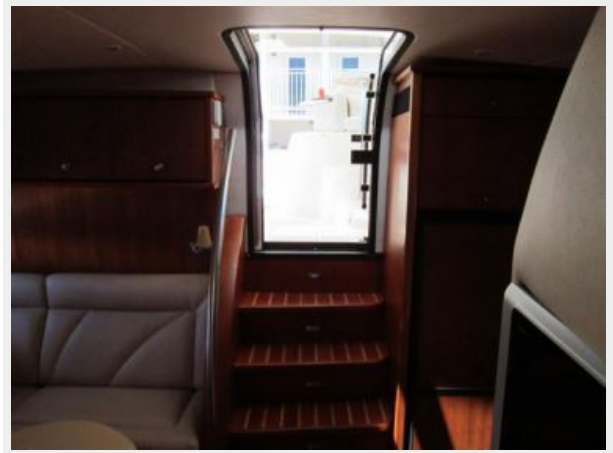
The Company offers the details of this vessel or yacht in good faith but cannot guarantee or warrant the accuracy of this information nor warrant the condition of the vessel. A buyer should instruct his representatives, agents, or his surveyors, to investigate such details as the buyer desires validated. This vessel or yacht is offered subject to prior sale, price change, or withdrawal without notice.

PHOTOS

Port Side



Salon/Dinette entry door from deck



Salon



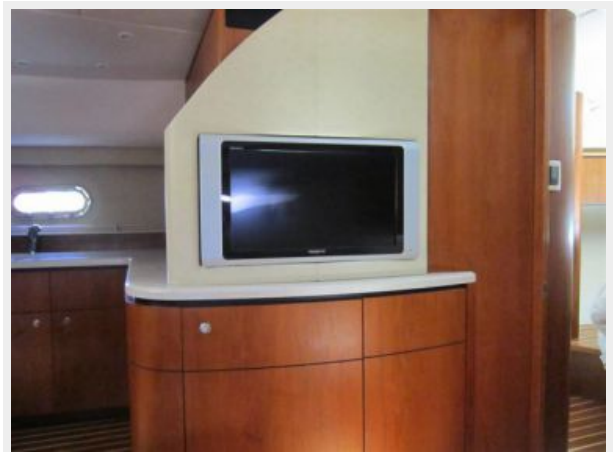
Power Panel



Salon



Salon TV



Galley



Galley



Galley



Master Stateroom



Master Berth Storage



Master Stateroom TV



Master Head



Master Head



Master Head



Guest Stateroom



Guest Stateroom TV



Guest Head



Guest Head



Guest Shower



Upper Cockpit



Upper Cockpit



Helm



Hard Top



Helm Electronics



Helm Electronics



Upper Cockpit Seating



Helm Seating



Lower Cockpit Seating



Lower Cockpit Wet Bar



E-Pirb



Engine Room



Engine Room



Engine Room



Engine Room



POD



Engine Room



Engine Room



Bow



Bow



Stbd Profile



Stbd Side



Swim Deck



Swim Deck



CONTACTS

Andrey Shestakov, leading yacht broker of the sales department of Shestakov Yacht Sales Inc. Shestakov Yacht Sales Inc., the official representative of the Miami/Fort Lauderdale FL headquarters.

Contact details

Email: andrey@shestakovyachtsales.com

Web: shestakovyachtsales.com/en/

Telephones

USA: +1(954)274-4435

Office hours

Monday – Saturday: **9:00 - 21:00** EDT

Sunday: **closed**

Address



Harbour Towne Marina, 850 NE 3rd St,
STE 213, Dania, FL 33004