

A' SALUTE' — WESTSHIP/WESTPORT



Судостроитель:
WESTSHIP/WESTPORT

Год постройки: 1999

Модель: Моторная яхта

Цена: **ЦЕНА ЯХТЫ ПО ЗАПРОСУ**

Местонахождение: United States

Длина общая: 108' 0" (32.92m)

Ширина: 23' 0" (7.01m)

Макс. осадка: 6' 0" (1.83m)

Крейс. скорость: 14 Kts. (16 MPH)

Макс. скорость: 18 Kts. (21 MPH)

Купить A' SALUTE' — WESTSHIP/WESTPORT а также выбрать подходящую вам яхту из нашего каталога яхт вам поможет опытный яхтенный брокер Андрей Шестаков. На сегодняшний день компания Shestakov Yacht Sales Inc. имеет большое количество яхт в собственном списке продаж, а также тесно сотрудничает со всеми крупными яхтенными производителями по всему миру.

Для того чтобы купить яхту A' SALUTE' — WESTSHIP/WESTPORT а также проконсультироваться по любому вопросу связанному с покупкой, продажей, чартером яхт позвоните по телефону **+7(918)465-66-44**.

ОГЛАВЛЕНИЕ

ОГЛАВЛЕНИЕ	2
ХАРАКТЕРИСТИКИ	5
Обзор	5
Основная информация	5
Размеры	5
Скорость, вместимость и масса	5
Размещение	6
Корпус и палуба	6
Информация о двигателе	6
ПОДРОБНОЕ ОПИСАНИЕ	7
108' Westship Motor Yacht A'SALUTE'	7
Aft Deck	7
Salon	7
Galley	7
Communications & Entertainment Equipment	8
Pilothouse	8
Flybridge	9
Tender & Toys	10
Master Stateroom	10
VIP Stateroom Starboard	11
VIP Stateroom Port	11
Forward Guest Stateroom Port	11
Forward Guest "V" Stateroom	11
Day Head	11
Crew Quarters	11
Engine & Mechanical Equipment	11
Deck Equipment	12
Lazarette	13

Safety & Fire Protection	13
Exclusions	13
Исключения	14
Отказ от ответственности	14
ФОТОГРАФИИ	15
Ship Name	15
Aft Deck	15
Aft Deck AI Fresco Dining	15
Formal Dining for Up to 10	15
TV with Fish Tank Screensaver	15
Salon Looking Forward	15
Salon Looking Aft	16
Salon Bar	16
Seared Ahi Tuna Salad	16
Updated Stainless Steel Galley Equipment	16
Starboard Access to Country Kitchen	16
Country Kitchen Breakfast Bar	16
"Double Door" Entry to Master Stateroom	17
Country Kitchen Dinette	17
Master Stateroom Head	17
Master Stateroom King Berth	17
Master Shower and Separate Jetted Tub	18
Mid-ship Queen Guest Stateroom	18
Mid-ship Queen Guest Stateroom	18
Mid-ship Twin Guest Stateroom	18
Mid-ship Twin Guest Stateroom Head	19
Stairway to Two Forward Cabins	19
Forward Cabin Head and Shower	19
Forward Guest Cabin	19

2nd Forward Guest Cabin with Desk	20
2nd Forward Guest Cabin Head and Shower	20
Main Helm Station	20
Observation Platform from Main Helm	20
Flybridge Dinette and Helm	20
Flybridge BBQ and Bar Area	20
Flybridge Bar	21
Flybridge Hot Tub and Entertainment Area	21
Flybridge Work Out Area	21
Forward "Bunny-Pad"	21
Collapsible Bike	21
Fishing and Dive Gear	21
Toys - Dingy, Wave Runners, Paddle Boards & Kayak	22
Wing Controls	22
Engine Room	22
Main Engine Room	22
КОНТАКТЫ	23
Контактная информация	23
Телефоны	23
Время работы	23
Адрес	23

ХАРАКТЕРИСТИКИ

Обзор

A' Salute' is the nicest and best priced of the ever popular Westship series. The amazing and unparalleled layout with 5 staterooms plus crew, enormous salon with bar and dining area, country kitchen, large aft deck, huge flybridge with Jacuzzi, and water sports friendly cockpit, continues to prove the perfect configuration for both private and/or charter use. This yacht has benefited from numerous upgrades and updates, as well as a continuous maintenance program.

A' Salute' will undoubtedly be the next Westship to sell. Don't miss the boat!

Основная информация

Тип судна: Моторная яхта

Модельный год: 1999

Год постройки: 1999

Страна: United States

Верх: Enclosed Pilothouse

Размеры

Длина общая: 108' 0" (32.92m)

Ширина: 23' 0" (7.01m)

Макс. осадка: 6' 0" (1.83m)

Скорость, вместимость и масса

Крейс. скорость: 14 Kts. (16 MPH)

Макс. скорость: 18 Kts. (21 MPH)

Чистый вес: 203 Pounds

Вместимость воды: 750 Gallons

Вместимость сточного бака: 460 Gallons **Объем топливного бака:** 5000 Gallons

Размещение

Всего кают: 5

Спальные места: 10

Всего ком. состава: 6

Койки экипажа: 3

Комм. состав экипажа: 3

Корпус и палуба

Материал корпуса: Fiberglass

Материал палубы: Teak and Fiberglass

Информация о двигателе

Двигатели: 2

Производитель: MTU

Модель: 8V396TE94

Тип топлива: Diesel

ПОДРОБНОЕ ОПИСАНИЕ

108' Westship Motor Yacht A'SALUTE'

108' Westship Motor Yacht A'SALUTE'

- 3 Underwater lights (beneath cockpit)
- Custom removable waterproof sunshade canopy (2009)
- (2) Maxwell 220 Electric Winches
- (2) Sea-8001, 8 HM Hailer/PA Horns (2 additional in mast)
- Tender fueling station (approximately 100 gallons fuel capacity)
- Weather-tight access door to Crew Quarters
- Transom shower
- Stowage areas
- Fighting Chair

Aft Deck

The Aft Deck offers a custom-varnished teak table that can slide fore and aft to adjust positions. Sunbrella seating, four (4) oiled teak 3-position chairs. The bar area has a Corian countertop, under-counter Sub-Zero freezer, Sub-Zero refrigerator, icemaker to starboard, and extra 110V power outlets (new). There are two (2) cameras mounted on the overhead, and plenty of stowage. There is a stainless steel spiral stairwell to starboard for access to the Flybridge.

Salon

The Salon is accessed from the aft deck and offers a comfortable guest area with two (2) substantial sofas and a custom coffee table. The entertainment center includes a Sony flatscreen DirectTV (2008), LG BlueRay Player, and Bose surround sound system with DVD and CD (2008). The bar is perfect for entertaining guests with four (4) custom leather bar stools that swivel, a KitchenAid icemaker, and a sink. The formal dining area boasts a round custom-built Italian table with an extension leaf and beautifully upholstered chairs to seat up to eight (8) people. A Clavinova CVP 210 Yamaha electric Player Piano is located in the dining room, along with built-in buffets to both port and starboard (with custom acrylic sections for dinnerware and wine glasses) for storage.

Galley

All New Appliances in Galley & Laundries (2008, 2009, 2010, and 2014) The Galley is fully equipped with all necessary appliances including a Sub-Zero refrigerator/freezer, Whirlpool oven, GE Profile Induction 5-burner cooktop (New), Whirlpool microwave/convection oven,

Bosch dishwasher, KitchenAid trash compactor, instant hot water dispenser (2012), Corian countertops and divided sink. An additional exhaust vent has been installed in the backsplash. There is an abundance of storage throughout the Galley, including two (2) Corian removable pieces to access extra storage, as well as storage under the dinette. There is a 50-bottle Marvel wine cooler in the adjoining hallway. The Galley also has a U-shaped settee for casual dining. Galley TV is an Initial.

Communications & Entertainment Equipment

- Customized Mast configured for a larger Direct TV Dome (4004-3 TVRO Series Antenna by SeaTel)
- All Staterooms, Galley, Flybridge, Crew Quarters and the Salon have Direct TV
- Receivers with GLA capabilities (Note: Direct TV receivers are leased and are therefore excluded from the sale. However, they can easily be replaced with new owner subscription to Direct TV)
- Bose Surround Sound Systems are featured in the Master Stateroom, the two VIP staterooms, and the Salon, as well as remote speakers located on the Foredeck, Aft Deck and Flybridge.
- Panasonic KX-T61610 Phones are located in all Staterooms, Galley, Salon, Pilothouse, and Crew Quarters which feature inter-cabin-coms, local cellular, or Satellite; the unit in the Pilothouse could also be used for General ship's (clock, horn, barometer, HP) alarm or Hailer.
- KVH TracPhone FB250 Satellite Phone with Internet and Fax capabilities provided by Inmarsat Fleet Broadband Services.
- Port Networks MWB250 WiFi System for onboard Internet (Ship PC)
- Peplink Balance Web Administrator for WiFi selection, 3G or Satellite Internet through the KVH TracPhone (Ship PC)
- Linksys Router for WiFi distribution throughout the vessel
- 4G Cellular Internet

Pilothouse

The Pilothouse consists of a Central Helm Station with helm, navigation equipment and monitors, Micro Commander Engine Controls with Digital and Analog Engine Displays, Bow Thruster Control and Rudder Jog Switch. There is also a leather settee, table and plenty of storage space.

PILOTHOUSE NAVIGATION EQUIPMENT:

- Nobeltec Chart Plotter
- 2x KEP Flatscreen Navigation Monitors
- Extron Bridgeview KEP Monitor Switching System Furuno NavNet 3D & Radar
- Furuno Far 21/27 Black Box Radar

- Furuno NavNet Navionics GPS Chart Plotter
- Furuno AIS FA 150 Transmitter/Receiver
- Simrad AP 50 Autopilot Control Unit
- Simrad IS 15 Repeater Display
- B&G HS 2000 Transducer with Wind and Speed
- Datamarine CD 400 Transducer/Depth Sounder
- Naiad Stabilizer Control with Angle Indicators
- 2x Standard Horizon Matrix GX 3000S VHF Radios with Hailer
- SSB Sea 225 Radio Telephone
- KVH Tracphone Satellite Phone
- Panasonic KX-T7030 Telephone
- Pelco Video Switching Unit for Cameras
- Ritchie Ships Compass, 6" Globemaster F-600
- ACR Searchlight Point Pad
- Vicon CCTV Control Panel
- (3) Windshield Wiper Controls
- (2) MTU Electronic Engine Displays
- Ritchie ship's compass

ADDITIONAL EQUIPMENT:

- Ship's horn
- Ships bilge and fire monitoring system
- Ship's HP computer with HP Officejet printer, scanner and fax
- Headhunter Tank Sentry for Fresh and Black Water
- Ship's clock
- Ship's barometer
- Windshield Wiper Controls
- Sony Sound System

Flybridge

The Flybridge is an exceptional area for entertaining and relaxing with a Jacuzzi and adjacent sunbathing area, bar with sink, under-counter refrigerator, electric BBQ grill, flatscreen TV and seating for four (4) under new custom removable waterproof sunshade canopy (aft section of flybridge). There is a custom-made varnished teak, angled dining table with four (4) director's chairs and Sunbrella seating area. The aft section has custom removable safety railings, with a custom rack for storing them. The flush mounted tender chocks are removable to create the perfect spot for the two (2) teak oiled recliner chairs. Flybridge TV insignia.

The Flybridge has three control stations. The central Helm station has three (3) Captain's chairs in front of the 26" helm, navigation equipment, Micro Commander Engine Controls, Bow Thruster Control and a Rudder Jog Control. There is a custom hardtop over the forward section of the flybridge. The tinted plexiglass windshield with venturi wind deflector and clear isinglass

enclosures.

The Wing Control Stations each consist of Micro Commander Engine Controls, Bow Thruster Control and a Rudder Jog Control with Simrad IS 20 (new 2012) Rudder Position indicators.

FLYBRIDGE NAVIGATION EQUIPMENT

- Furuno C-Map NT GP-1850 WF GPS
- 2x KEP 15" Flatscreen monitors
- Furuno Remote control unit with track ball
- Furuno Nav Net 3D Control unit
- Simrad AP 50 Auto Pilot Control unit
- Simrad IS 15 Repeater Display unit
- Simrad IS 20 Rudder Indicators at the Wing Stations
- B&G HS 2000 Transducer Display with wind and speed
- Naiad Stabilizer Control unit
- 2x Standard Horizon Matrix GX 3000S VHF Radios
- (2) Engine Tachometers
- (3) Bow Thruster Joy Sticks
- ACR Searchlight Point Pad
- Ritchie Ship's Compass, 6" Globemaster F-600
- (2) Sea-8001, 8 HM Hailer/PA Horns (2 additional in cockpit)
- Ship's Horn

Tender & Toys

- 2004 18' Novurania with 115hp Yamaha outboard Model F11TXRC (removable flush tender chocks on Flybridge)
- 2 x 2013 Yamaha VX Cruise (waverunner)
- 2 x SeaDoo Underwater Scooters
- 2 x Inflatable Stand-up Paddle Boards
- Inflatable 2-Man Kayak
- Folding Bicycle
- Adult Water Skis, Slalom Ski, Wakeboard, Kneeboard
- Adult Snorkel Gear
- Inflatable Tube

Master Stateroom

The Master Stateroom features a luxury king-size bed with memory foam mattress, integrated desk, large cedar-lined closet, additional storage space, new flatscreen LG TV, leather wall panel, iPod docking station, entertainment system hidden behind cabinetry with new built-in bookshelves to port. The Master His and Hers bathrooms have Headhunter toilets, shower with

dual-heads and tinted doors, and a large Jacuzzi tub.

VIP Stateroom Starboard

This VIP Stateroom to port offers a king bed, however this stateroom easily converts to twin beds. There is a cedar-lined closet, flatscreen Sony TV, and en suite bathroom with shower, with tinted doors and Headhunter toilet.

VIP Stateroom Port

This VIP Stateroom located starboard offers a queen bed, cedar-lined closet, flatscreen Sony TV and en suite bathroom with shower, with tinted doors and Headhunter toilet.

Forward Guest Stateroom Port

This Guest Stateroom has a full size bed with mattress, cedar-lined closet, Initial flatscreen TV, shelving, and en suite bathroom with shower, with tinted doors and Headhunter toilet.

Forward Guest "V" Stateroom

Below decks and forward is the V-Guest Stateroom with twin beds, Initial flatscreen TV, combination washer and dryer, shower with tinted doors and Headhunter toilet. There is a hatch to the foredeck.

Day Head

The Day Head is located on the main deck in the starboard passageway and has a Headhunter toilet, sink and mirror.

Crew Quarters

The crew's quarters were customized to comfortably accommodate up to 4 crew members with plenty of space and privacy. Aft and to port, the Captain's Cabin has a double berth that can accommodate 2 people, flatscreen RCA TV (new) and private en suite head with shower, sink and toilet. Aft and to starboard are 2 more crew staterooms. Each has its own single berth, one (1) Sharp flatscreen TV and one (1) Initial TV, and private en suite heads with shower, toilet and sink.

Engine & Mechanical Equipment

- (2) MTU 8V396TE94 @ 1525hp each. As of October 2016: Port 5994 hours / Starboard 5938 hours
- Steering Systems, Jastram, Vickers hydraulic pTO
- (2) Naiad Stabilizers Model 302 with 7.5 sq. ft. fins
- WESMAR Bow Thruster VT16 Hydraulic
- MarineAir Systems Reverse Cycle Air Conditioning, 230V A/C
- (3) Chillers, 180,000 BTU Model # MCWLP60SRC
- 110V Fuel Transfer Pump with timer and flow meter
- Back-up manual fuel transfer pump
- Macerator Pumps: 120 VAC Edson series for crew heads, 120 diaphragm black water pump, Rule 24VDC back-up black water pump
- (4) Racor 75-1000FX Fuel Filter/Water Separators w/ vacuum gauges
- (2) AlgaeX Fuel Conditioners
- (2) ZF Transmissions BW255
- Tides Marine Dripless Stuffing Boxes
- (2) Water Heaters: (1) 52-gal & (1) 30-gal, 220V
- (2) Watermakers: Sea Recovery 1200 gpd Model 1200AC (1 was replaced in 2009)
- (2) Jabsco Bilge Pumps 110VAC
- (2) Rule 24VDC 2000 GPH Engine compartment pumps with automatic float switches
- (3) Rule 2000 GPH Bilge Pumps with automatic float switches, 1 per compartment
- (4) Rule 24VDC 2000 GPH Bilge Pumps with automatic float switches: (2) in Crew Area Bilge & (2) in Lazzarette Bilge
- Closed Circuit Camera
- Block Heaters
- Shorepower cord (100 amp single phase 110/240) on Glendinning electric reel- feeds out starboard hull side

Northern Lights Generator - Model #445, 65 kw

- Port - Total Hours 15,702 - 7619 since rebuild
- Starboard - Total Hours 15,866 - 7506 since rebuild

Deck Equipment

- MarQuipt 2500-lb. Davit
- Bowmar Chain Locker Hatch 22"
- 200' 1/2" Galvanized Steel Chain
- Maxwell 3500 Hydraulic Windlass
- 8-Step MarQuipt Boarding ladder
- Boarding Doors, port & starboard
- Raised Seating area with cushions and escape hatch for V-Berth area
- Custom Bow Safety Rails
- MarQuipt Sea-Stairs with custom stowage bracket, and 2 removable handrails

- Numerous "Pop-Up" Cleats

BOSUNS LOCKER:

- (2) 100-amp shorepower connections
- (2) 12,000 BTU Air Handler for Galley Area
- Spare mooring lines (new)
- (2) Shorepower Cords

Lazarette

Beneath the cockpit is the spacious lazarette, where the Brownie's dive compressor can be found. The compressor can fill up to 4 dive tanks (aluminum or steel) at a time. The controls and fill nozzles are conveniently mounted just inside of the crew companionway. The lazarette also has plenty of extra room for stowage, as well as provides easy access to the aft fuel tanks and steering gear.

Safety & Fire Protection

- Visual distress signals: Red handheld; Orange smoke; Parachute aerial type
- Navigation lights
- Anchor light
- (3) Pneumatic Horns
- Power exhaust ventilation blowers for engines
- Life Jackets: (17) Type I and (4) Type II
- (2) Ring Buoys, Type IV
- 2x SSP Oceanmaster 8man Inflatable Life raft
- (11) USCG Approved Dry Chemical Size I
- (2) USCG Approved Dry Chemical Size II
- Kidde-Fenwal Halon 1301 Machinery Space Fixed Fire Suppression System
- 2 Smoke Hoods in each of the 5 staterooms
- First Aid Kit
- Smoke Detectors: Master SR Alarm; monitor in pilothouse
- Fire Alarms: Heat sensors, audible and signal light in Pilothouse
- (1) ACR Searchlights
- EPIRB Sat 406
- Secondary Engine Room Escape Hatch

Exclusions

- Erte Bronze
- Direct TV Receivers (leased)

- Fishing Equipment

Исключения

При продаже яхты исключаются личные вещи владельца.

Отказ от ответственности

Компания предоставляет описание судна или яхты добросовестно, но не может гарантировать точность этой информации, а также не ручается за техническое состояние. Покупатель должен проинструктировать своих агентов или оценщиков исследовать представленную информацию более подробно, по собственному желанию. Продажа судна или яхты, изменение цены или снятие с продажи будет происходить без предварительного уведомления.

ФОТОГРАФИИ

Ship Name



Aft Deck



Aft Deck Al Fresco Dining



Formal Dining for Up to 10



TV with Fish Tank Screensaver



Salon Looking Forward



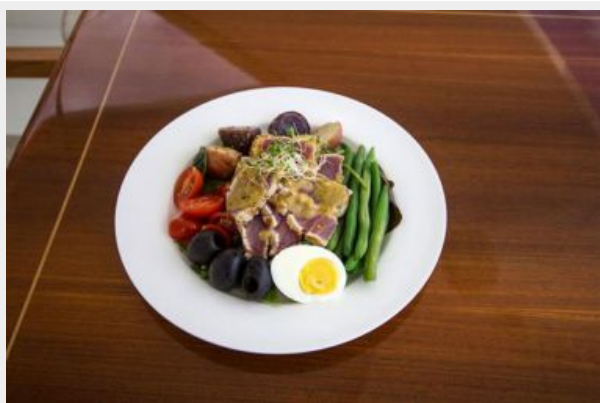
Salon Looking Aft



Salon Bar



Seared Ahi Tuna Salad



Updated Stainless Steel Galley Equipment



Starboard Access to Country Kitchen



Country Kitchen Breakfast Bar



"Double Door" Entry to Master Stateroom

Country Kitchen Dinette



Master Stateroom Head

Master Stateroom King Berth



Master Shower and Separate Jetted Tub



Mid-ship Queen Guest Stateroom



Mid-ship Queen Guest Stateroom



Mid-ship Twin Guest Stateroom



Mid-ship Twin Guest Stateroom Head



Stairway to Two Forward Cabins



Forward Guest Cabin



Forward Cabin Head and Shower



2nd Forward Guest Cabin with Desk



2nd Forward Guest Cabin Head and Shower



Main Helm Station



Observation Platform from Main Helm



Flybridge Dinette and Helm



Flybridge BBQ and Bar Area



Flybridge Bar



Flybridge Hot Tub and Entertainment Area



Flybridge Work Out Area



Forward "Bunny-Pad"



Collapsible Bike



Fishing and Dive Gear



Toys - Dingy, Wave Runners, Paddle Boards & Kayak

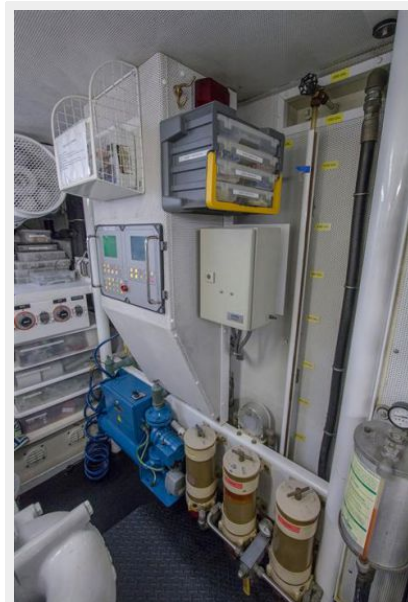


Wing Controls



Engine Room

Main Engine Room



КОНТАКТЫ

Андрей Шестаков (Andrey Shestakov) – ведущий яхтенный брокер отдела продаж яхт и судов компании Shestakov Yacht Sales Inc. Официальный представитель Shestakov Yacht Sales Inc. для русскоговорящих клиентов в центральном офисе компании в Майами/Форт Лодердейл/Флорида/США.

Контактная информация

Email: andrey@shestakovyachtsales.com

Web: shestakovyachtsales.com

Телефоны

Краснодарский край: **+7(918)465-66-44**

США, Майами, Флорида: **+1(954)274-4435**

Время работы

Понедельник – Суббота: **9:00 - 21:00**
EDT

Воскресенье: **Закрето**

Адрес



Harbour Towne Marina, 850 NE 3rd St,
STE 213, Dania, FL 33004