

SUMMER STAR — AMERICAN MARINE



Судостроитель: AMERICAN MARINE

Год постройки: 1997

Модель: Моторная яхта

Цена: **ЦЕНА ЯХТЫ ПО ЗАПРОСУ**

Местонахождение: United Kingdom

Длина общая: 43' 3" (13.18m)

Ширина: 14' 1" (4.29m)

Мин. осадка: 4' 2" (1.27m)

Крейс. скорость: 13 Kts. (15 MPH)

Макс. скорость: 17 Kts. (20 MPH)

Купить **SUMMER STAR — AMERICAN MARINE** а также выбрать подходящую вам яхту из нашего каталога яхт вам поможет опытный яхтенный брокер Андрей Шестаков. На сегодняшний день компания **Shestakov Yacht Sales Inc.** имеет большое количество яхт в собственном списке продаж, а также тесно сотрудничает со всеми крупными яхтенными производителями по всему миру.

Для того чтобы купить яхту **SUMMER STAR — AMERICAN MARINE** а также проконсультироваться по любому вопросу связанному с покупкой, продажей, чартером яхт позвоните по телефону **+7(918)465-66-44**.

ОГЛАВЛЕНИЕ

ОГЛАВЛЕНИЕ	2
ХАРАКТЕРИСТИКИ	4
Обзор	4
Основная информация	4
Размеры	4
Скорость, вместимость и масса	4
Размещение	4
Корпус и палуба	5
Информация о двигателе	5
ПОДРОБНОЕ ОПИСАНИЕ	6
Broker's Comments	6
Construction	6
Machinery	6
Electrical Systems	7
Plumbing Systems	8
Tankage	8
Navigation Equipment	9
Domestic Equipment	9
Accommodation	10
Deck Equipment	12
Исключения	13
Отказ от ответственности	13
ФОТОГРАФИИ	15
КОНТАКТЫ	25
Контактная информация	25
Телефоны	25
Время работы	25
Адрес	25

ХАРАКТЕРИСТИКИ

Обзор

An exceptional full option 42 MY from 1997 in diligent ownership. Gleaming brightwork, beautiful interior joinery and that superb aft cabin. Motor boating does not come any better than this.

Основная информация

Тип судна: Моторная яхта

Подкатегория: Flybridge

Модельный год: 1997

Год постройки: 1997

Страна: United Kingdom

Размеры

Длина общая: 43' 3" (13.18m)

Ширина: 14' 1" (4.29m)

Мин. осадка: 4' 2" (1.27m)

Скорость, вместимость и масса

Крейс. скорость: 13 Kts. (15 MPH)

Макс. скорость: 17 Kts. (20 MPH)

Водоизмещение: 34987.3609794 Pounds

Вместимость воды: 285.834160264
Gallons

Объем топливного бака: 720.661357856
Gallons

Размещение

Всего кают: 3

Всего коек: 6

Всего ком. состава: 2

Корпус и палуба

Материал корпуса: GRP

Материал палубы: Teak

Комплектация корпуса: Semi-Displacement

Дизайнер корпуса: Ken Smith

Информация о двигателе

Двигатели: 2

Производитель: Caterpillar

Модель: 3116

Тип двигателя: Inboard

Тип топлива: Diesel

ПОДРОБНОЕ ОПИСАНИЕ

Broker's Comments

The Grand Banks 42 hull needs no introduction. From humble beginnings as fishing trawler hulls on the Newfoundland Grand Banks, the hull has become a milestone cruising yacht hull form, allowing stable displacement speeds, and with enough horsepower, a semi-displacement to near full-planing capability. The Motor Yacht thus simply improves on an exceptionally sea-worthy platform – with a fitted interior of the absolutely highest quality (wiring, booklets, lighting, joinery and mechanical installations are as good as it gets.). Combine this with a sensational aft cabin (with separate shower and heads compartments), long, lazy flybridge and an owner who has evidently doted on his yacht (she is shed-bound each winter for varnish/bright-work – with regular servicing) and you have a very rare opportunity.

Please note that a full set of high-resolution photographs are available upon request.

Construction

RCD Status: Our understanding is that the yacht is exempt from the essential safety requirements of Directive 94/25EC (Recreational Craft Directive) as she was built and placed into use within the EU prior to 1998.

Hull, Deck & Superstructure Construction:

- White GRP hull, deck and superstructure.
- Teak-laid decks, fly-bridge, foredeck (laid 2010) and aft deck.
- Varnished capping rails with scroll ends.
- Antifouled (2015).
- Anodes (2015).

Machinery

Engine & Gearboxes:

- Located under wheelhouse sole, 2 x Caterpillar 3116 375hp 6-cylinder turbo diesel engines.

- Engines serviced 2015.
- Fresh water cooled via heat exchangers.
- Morse dual single lever controls with electric start at both helms.
- Full engine instrumentation.

Maintenance & Performance:

- Engine Hours: Approx. 1,738 at October 2015.
- Cruising Speed: 13 knots.
- Maximum Speed: 17 knots.

Propulsion & Steering:

- Wheel steering.
- Twin shaft drives powering 3-bladed propellers (one set of spare propellers included).
- Hydraulic trim tabs.
- Side Power bow thruster and stern thruster professionally installed in 2004 with controls at both helms and a handheld remote.

Electrical Systems

Voltage Systems:

- 12V system with ring main.

Battery Banks:

- 5 x 12V batteries charged via engine alternator.

Battery Chargers:

- Sterling smart battery charger.

Alternators:

- Caterpillar-driven engine alternators.

Generator:

- Onan 6.5kW diesel marine generator set (overhauled and rebuilt in 2010).

Shore Power:

- Shorepower system & cable.

Plumbing Systems

Fresh Water & Water Heating System:

- There is a pressurised hot and cold water system via a large Seaward calorifier to all basins and showers, and holding tank to both heads with monitoring system.
- Immersion coil.

Bilge Pumps:

- Manual and electric bilge pumps.

Tankage

Fuel:

- Total capacity of 600 gallons.

Fresh water:

- Total capacity of 238 gallons.

Blackwater holding tanks:

- Fitted to both heads, with overboard macerated discharge and deck suction discharge.

Navigation Equipment

Main helm:

- Raymarine E120 multi-function colour GPS chart plotter/radar with fishfinder and speed transducer (2005).
- Raymarine RN300 GPS navigation system.
- Phillips MK8 GPS navigation system.
- Furuno Navtex 300 weather system.
- Autohelm Speed, Depth displays.
- Shipmate RS8300 VHF radio.
- Autohelm ST7000 autopilot with control heads

Flybridge:

- Raymarine E80 colour GPS chart plotter/radar at flybridge (2005).
- Raymarine Pathfinder 18 radome (2005).
- Autohelm Speed, Depth and Wind displays (in cupboard to port of main console).
- Ritchie steering compass at flybridge.
- Autohelm ST7000 autopilot with control head.
- Shipmate RS8300 VHF radio.
- Engine room and portside cameras linked to Raymarine E120 display.
- Rudder indicator.
- Clock and barometer.

Domestic Equipment

Galley:

- Rose Princess gas oven and separate grill, Neff hob with 2 gas and 2 electric hobs.
- Fitted Panasonic microwave.
- Stainless steel sink with timber cover plate.
- Large fridge with freezer compartment.
- U-line ice maker (new 2010) and storage lockers.

Heads/Showers:

- 2 x WCs.
- 3 x Showers.

Heating & Ventilation:

- Eberspacher diesel fired central heating system with radiators in all cabins.

Entertainment:

- Sharp TV and Panasonic DVD player.
- Sony stereo radio/cassette with 10 disc CD changer.
- 2 x Jamo premium quality saloon speakers.
- 2 x Kenwood waterproof flybridge speakers.

Lighting:

- 12V lighting throughout – both overhead obscured GB lighting panels, reading lights and down-lights.

Accommodation

Summary of Accommodation:

- Luxurious accommodation offering 6 berths in 3 cabins with full standing headroom throughout, the saloon can also be utilised to provide further berths if necessary.
- The interior is finished with high quality cabinetry, upholstery and parquet floors throughout and is in excellent condition.
- 2 concealed safes.
- Bespoke linen.

Description of layout from forwards:

Forward Cabin:

Large double V berth with hanging and storage lockers.

Guest Cabin:

Located to port, single bunk bed over a large single berth (possibly a small double) with hanging locker and storage.

Forward Heads:

Located to starboard with a marine heads, wash basin, separated shower area and good stowage.

Saloon:

Steps lead up to the light and comfortable wheelhouse which consists of the helm position and a large L-shaped dinette to starboard, mini bar and a linear galley forward to port. Entertainment system including TV, DVD, radio, cassette and CD equipment.

Galley:

Linear galley area equipped with a gas oven and separate grill, 2 gas and 2 electric hobs, fitted microwave, stainless steel sink, large fridge with freezer compartment, U-line ice maker (new 2010) and storage lockers.

Owner's Aft Cabin:

Steps down to a spacious aft cabin offering an offset island queen size berth, dressing table, numerous storage and hanging lockers and access to separate en-suite shower and heads compartments.

En-suite Heads and Shower Compartments:

Located to port is the large owner's heads compartment with a marine toilet, wash basin and ample stowage. On the other side of the aft cabin is a separate shower compartment complete with teak laid bathing seat.

Engine Room:

Superbly accessible engine bay with all systems easily accessed, lighting, camera for monitoring whilst underway and ample room to maintain and service the engines and generator.

Deck Equipment

General:

- The Grand Banks 42 offers excellent external space thanks to a large aft deck and comfortable flybridge offering ample seating and an external dining area.
- Wide safe decks, deep gunnels, ample stowage, all-round rails, mast/crane and flat forward cabin roof ideal for sunbathing, all make this a very practical motor yacht.
- Stainless steel and teak rails.
- Stainless steel and teak bathing platform.
- Stainless steel and teak bathing and transom ladders.
- Stainless steel davits and fender baskets.
- Additional flybridge storage locker (2009).
- Mast with lifting tackle and boom light.

Anchoring & Mooring Equipment:

- Anchor with chain and warp.
- Electric anchor windlass with controls at both helms and windlass.
- Fenders and warps.

Covers, Canvas & Cushions:

- Flybridge, window, hatch, cockpit dodgers and dinghy covers in blue (2007).

Tender & Outboard:

- 2004 Grey Valiant 340 RIB with 5HP 4-stroke Honda outboard and fitted cover.

Safety Equipment:

- 2 x Horseshoe lifebuoys with floating lights.
- Kannad 406mhz EPIRB (2010).
- 6-man liferaft (fully serviced – next service due 2017).

Fire-fighting equipment:

- Full firefighting system in engine bay.
- Fire extinguishers.
- Seaward gas safety cut off solenoid.

Исключения

При продаже яхты исключаются личные вещи владельца.

Отказ от ответственности

Компания предоставляет описание судна или яхты добросовестно, но не может гарантировать точность этой информации, а также не ручается за техническое состояние. Покупатель должен проинструктировать своих агентов или оценщиков

исследовать представленную информацию более подробно, по собственному желанию. Продажа судна или яхты, изменение цены или снятие с продажи будет происходить без предварительного уведомления.

ФОТОГРАФИИ

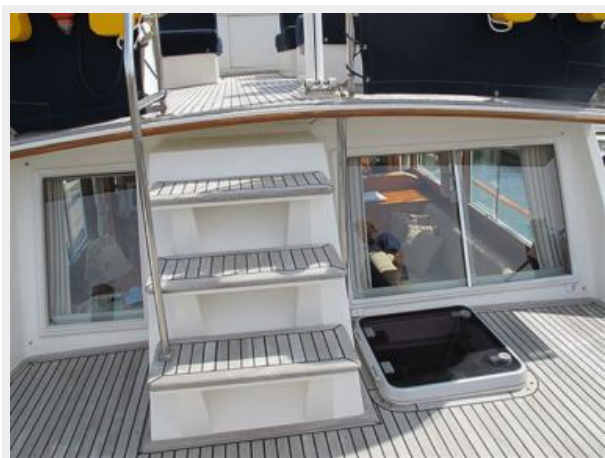
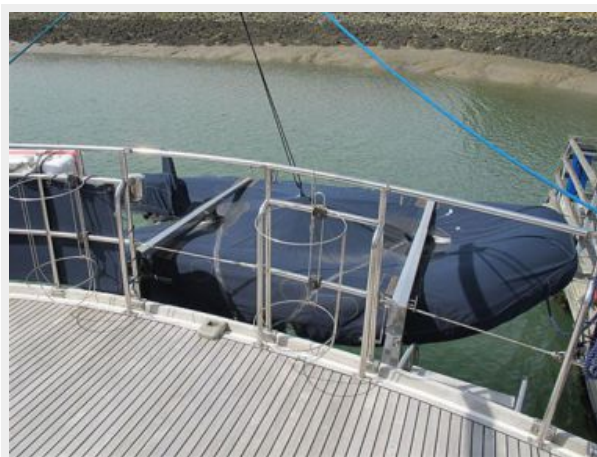
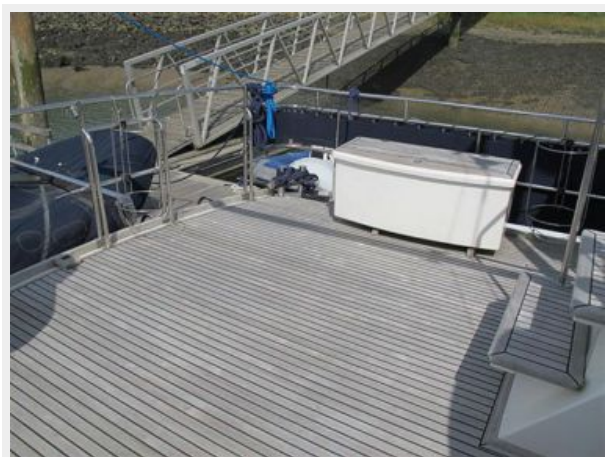


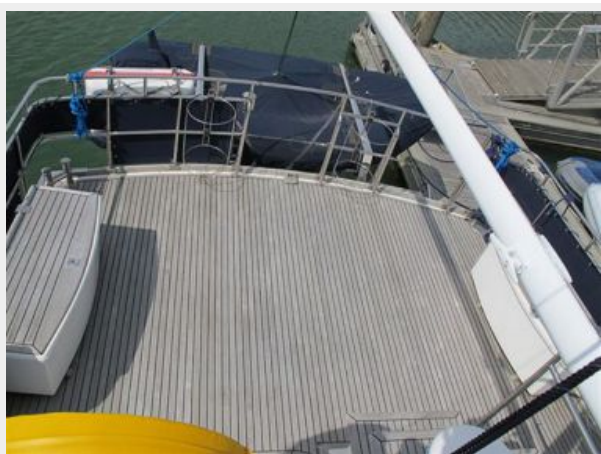






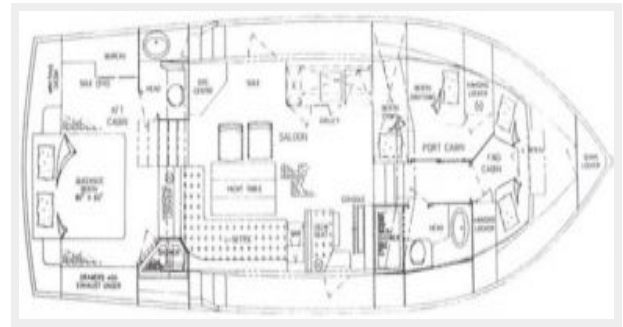












КОНТАКТЫ

Андрей Шестаков (Andrey Shestakov) – ведущий яхтенный брокер отдела продаж яхт и судов компании Shestakov Yacht Sales Inc. Официальный представитель Shestakov Yacht Sales Inc. для русскоговорящих клиентов в центральном офисе компании в Майами/Форт Лодердейл/Флорида/США.

Контактная информация

Email: andrey@shestakovyachtsales.com

Web: shestakovyachtsales.com

Телефоны

Краснодарский край: **+7(918)465-66-44**

США, Майами, Флорида: **+1(954)274-4435**

Время работы

Понедельник – Суббота: **9:00 - 21:00**
EDT

Воскресенье: **Закрето**

Адрес



Harbour Towne Marina, 850 NE 3rd St,
STE 213, Dania, FL 33004