

NO NAME — QUEENSHIP



Builder: QUEENSHIP

Year Built: 2001

Model: Motor Yacht

Price: PRICE ON APPLICATION

Location: United States

LOA: 70' 0" (21.34m)

Beam: 17' 4" (5.28m)

Min Draft: 5' 5" (1.65m)

Cruise Speed: 22 Kts. (25 MPH)

Max Speed: 26 Kts. (30 MPH)

Our experienced yacht broker, Andrey Shestakov, will help you choose and buy a yacht that best suits your needs **NO NAME — QUEENSHIP** from our catalogue. Presently, at Shestakov Yacht Sales Inc., we have a wide variety of yachts available on our sale's list. We also work in close contact with all the big yacht manufacturers from all over the world.

If you would like to buy a yacht **NO NAME — QUEENSHIP** or would like help answering any questions concerning purchasing, selling or chartering a yacht, please call **+1(954)274-4435**

TABLE OF CONTENTS

TABLE OF CONTENTS	2
SPECIFICATIONS	5
Overview	5
Basic Information	5
Dimensions	5
Speed, Capacities and Weight	5
Accommodations	6
Hull and Deck Information	6
Engine Information	6
DETAILED INFORMATION	7
70' Queenship Motor Yacht	7
Electrical System	7
Electronics & Navigational Equipment	7
Engine/ Mechanical Equipment	9
Deck Equipment	9
Pilothouse	9
Salon	9
Master Stateroom	10
Galley	10
VIP Stateroom	10
Aft Deck	10
Flybridge	11
Exclusions	11
Disclaimer	11
PHOTOS	12
Forward Profile	12
Hull	12
Fly Bridge	12

Fly Bridge	12
Fly Bridge	12
Fly Bridge Helm	12
Forward	13
Aft Deck Seating	13
Aft	13
Aft Deck	13
Salon	13
Salon	13
Dining	14
Salon Seating	14
Dining	14
Galley	14
Day Head	15
Master Stateroom	15
Master Stateroom	15
Master Stateroom	15
Master Stateroom	15
Master Bath	15
Master Bath 2	16
Guest Stateroom	16
Guest Bath	16
Guest Stateroom	16
Crew Bath	17
Crew Stateroom	17
Crew Stateroom	17
Crew Storage	17
Helm	17
Helm	17

Helm Controls	18
Helm Controls	18
Helm Controls	18
Helm Controls	18
Helm Seats	18
Helm Seats	18
Stairs	19
Helm Guest Seating	19
Engine Room	19
Engine Room	19
Generator	19
Tender & Davit	19
2017 Bottom Job	20
2017 Bottom Job	20
2017 Bottom Job	20
2017 Bottom Job	20
CONTACTS	21
Contact details	21
Telephones	21
Office hours	21
Address	21

SPECIFICATIONS

Overview

Graceful motor yacht with impressive pilothouse and large flybridge combines head turning style with quality craftsmanship. This professionally maintained vessel is ready for cruising and features luxurious interior woodwork and flooring. Interior highlights include enclosed pilothouse with doors to port and starboard leading to wide walkways, elegant salon, home-sized galley, day head, washer, dryer, spacious master and VIP accommodations with separate crew quarters and large walk-in engine room. Expansive covered flybridge with ample seating can be accessed from galley and aft deck, forward Sunpads, aft cockpit with teak sole and u-shaped seating, curved teak staircases on port and starboard descend from aft deck to swim platform, watertight transom door for access to engine room and crew quarters. Owner looking to move up.

Basic Information

Category: Motor Yacht

Sub Category: Pilothouse

Model Year: 2002

Year Built: 2001

Country: United States

Fly Bridge: Yes

Dimensions

LOA: 70' 0" (21.34m)

Beam: 17' 4" (5.28m)

Min Draft: 5' 5" (1.65m)

Speed, Capacities and Weight

Cruise Speed: 22 Kts. (25 MPH)

Max Speed: 26 Kts. (30 MPH)

Displacement: 104000 Pounds

Water Capacity: 360 Gallons

Holding Tank: 210 Gallons

Fuel Capacity: 1575 Gallons

Accommodations

Total Cabins: 2

Sleeps: 6

Total Heads: 4

Crew Cabin: 1

Crew Berths: 2

Hull and Deck Information

Hull Material: Fiberglass

Deck Material: Fiberglass

Hull Configuration: Modified V-Hull

Hull Designer: Mike Harling

Engine Information

Engines: 2

Manufacturer: MAN

Fuel Type: Diesel

DETAILED INFORMATION

70' Queenship Motor Yacht

Fresh bottom paint, prop speed and new zincs in 2017 Graceful 70' Queenship Motor Yacht with impressive pilothouse and large flybridge combines head turning style with quality craftsmanship. This professionally maintained vessel is ready for cruising and features luxurious interior woodwork and flooring. Interior highlights include enclosed pilothouse with doors to port and starboard leading to wide walkways, elegant salon, home-sized galley, day head, washer, dryer, spacious master and VIP accommodations with separate crew quarters and large walk-in engine room. Expansive covered flybridge with ample seating can be accessed from galley and aft deck, forward Sunpads, aft cockpit with teak sole and u-shaped seating, curved teak staircases on port and starboard descend from aft deck to swim platform, watertight transom door for access to engine room and crew quarters. Owner looking to move up.

Electrical System

- 21 KW Onan
- 15 KW Onan
- 50/100 shore service
- Glendenning cable master
- BN shore power management system
- Charles C- Charger system with 20/30/60/100 amp chargers
- Mastervolt 24/100 amp charger
- Galvanic Isolator

Electronics & Navigational Equipment

Pilot House Electronics:

- Northstar 961 GPS Plotter
- Sea Hailer
- Sea 156 VHF
- Robertson AP21 autopilot

-
- Simrad AR 77 Electronic Gyro Compass
 - Raytheon E120 Color 96 Mile Radar/Plotter with 6' open array
 - Simrad RA 42 radar
 - Data Marine Link system Speed, Depth and Wind indicator
 - Bilge Pump monitor system
 - Glendinning electronic shift controls
 - ACR remote spotlight controller
 - 2 Floscan units
 - Bow thruster
 - Ritchie Compass
 - 12" monitor for for ship's camera systems
 - Wesmar Stablizers
 - Just aft of helm is the AC/DC electrical panel with clear doors
 - Epirb
 - (2) KVH track vision sat systems

Flybridge Electronics:

- (2) Raytheon E120 monitor for Color Radar, Plotter, Fish Finder
- (2) Flo Scan Units
- Glendinning electronic shift controls
- Robertson AP 20 autopilot
- ICOM M504 VHF
- Side Power Bow Thruster
- Wesmar Stablizers
- Norcold refrigerator
- ACR remote spot light control

Engine/ Mechanical Equipment

The engine room is accessed from either a staircase on the aft starboard side of salon or the access door from the swim platform. The stand up engine room is very large with easy access to all of the ship's mechanical and electrical systems as well as the gen sets. There are engine gauges, start up panels and fuel sight gauges on forward bulkhead, (2) crash pumps, Racor fuel filters, (7) Cruise Air compressors, Ravena oil changer system for mains and generator, Delta T system, and an air compressor.

Deck Equipment

- Muir windlass with 200 feet of chain
- CQR #1 00 anchor
- Sunbrella pilothouse window covers and all exterior seating
- Marquip boarding ladder
- Dual Kahlenberg horns
- 6 person Avon life raft
- Glendinning cablemaster systems

Pilothouse

The pilothouse has sliding watertight doors on each side, and offers access from the tide ladder and access forward to the bow area. The lower helm has a beautiful high gloss cherry raised panel for great visibility and view of all the electronics. There are 2 black leather Stidd helm chairs with recessed foot rest and matching black leather console combing to reduce glare. There is a custom companion settee to starboard along with oak sole, chart storage and galley access.

Salon

Entering the salon through a large slider from the aft deck one can appreciate the natural light offered from the vessel's large cabin windows. The high-gloss cherry interior and updated earth carpeting really work well. To port is a matching black leather sofa and reclining chair with end tables on each end of the sofa, and a single cocktail table in front of the sofa. A formal dining table is to starboard with 4 chairs, and custom cabinets are along the full length of the starboard side of salon with an integrated pop up surround sound system, a 42" pop up flat screen television, and wine cooler. Moving forward up 2 steps there is a curved stainless steel stairwell

with teak treads heading to the flybridge. Just forward is the day head and across to the starboard side is the galley.

Master Stateroom

The master is located amidships and offers the dimensions of a much larger motor yacht. There is a centerline king bed with matching built-in 2-drawer end tables along with halogen reading lamps above the pillow and wall lamps. To starboard side is full length cedar lined locker followed by a makeup vanity and aft are 6 drawers with above counter storage cabinets. To port is a matching full length cedar locker with a built in small settee and 6 drawers of storage. There is a new 42" Samsung LCD with cabinets below housing electronics. The en suite head has black Corian counter tops with 2 sinks and 2 cedar lined drawers. There is also a large Corian stall shower with Grohe shower head.

Galley

The galley is to starboard as you head forward from the salon. It is a well-lit area with high gloss cherry finish and is complimented by black granite countertops. The refrigeration consists of low profile Sub Zero drawers with 4 designated for refrigeration and 2 drawers for freezers.

There is a 4 burner propane gas cook top and icemaker below. Miele dishwasher and trash compactor. Overhead is a GE Convection Microwave and Keurig coffee maker. There are plenty of overhead cabinets on both sides, as well as deep storage below the sink to facilitate all storage needs.

VIP Stateroom

The VIP is located forward and is accessed from the port side companion way where you will find linen cabinets and separate washer/dryer units. There is a centerline queen bed with 4 large port holes that make for a very bright and open stateroom. Storage drawers are located below the bed and just forward is a full length cedar lined closet with 3 drawers and a wall mounted 19" Samsung LCD television. To starboard is the en suite head with matching high gloss cherry vanity with the black Corian top and single sink and storage below. A large stall shower with a glass door and mirrored ceilings and large porthole compliment the vanity.

Aft Deck

The aft deck has a teak sole with 2 custom built settees, a refrigerator, sink and access to the salon is through a large sliding door. On both sides of the aft deck are Euro style curved staircases to the teak swim platform, with access to the engine room and crew quarters.

Flybridge

The flybridge is accessed from the outside by a molded stair case on the aft deck and from the inside by the custom curved Stainless steel staircase in the salon. Both have sliding glass doors. The helm area has 2 white Stidd helm chairs with floor rest. There is built-in L-shaped bench seating with new cushions that will comfortably seat 10. Aft is the deck chocks for the Nautica RB12 center console RIB with Yamaha 40 HP 4 stroke motor. A Nautical Structures low profile EX 1500 davit is located on the portside of bridge for tender launching.

Exclusions

Owner's personal belongings.

Disclaimer

The Company offers the details of this vessel or yacht in good faith but cannot guarantee or warrant the accuracy of this information nor warrant the condition of the vessel. A buyer should instruct his representatives, agents, or his surveyors, to investigate such details as the buyer desires validated. This vessel or yacht is offered subject to prior sale, price change, or withdrawal without notice.

PHOTOS

Forward Profile



Hull



Fly Bridge



Fly Bridge



Fly Bridge



Fly Bridge Helm



Forward



Aft Deck Seating



Aft



Aft Deck



Salon



Salon



Salon Seating



Dining



Dining



Galley



Day Head



Master Stateroom



Master Stateroom



Master Stateroom



Master Stateroom



Master Bath



Master Bath 2



Guest Stateroom



Guest Bath



Guest Stateroom



Crew Stateroom



Crew Bath



Crew Stateroom



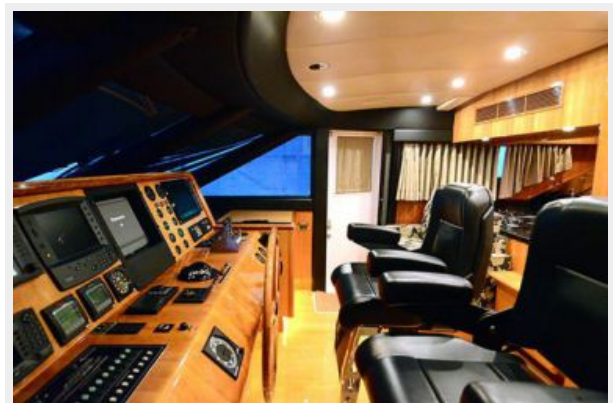
Crew Storage



Helm



Helm



Helm Controls



Helm Controls



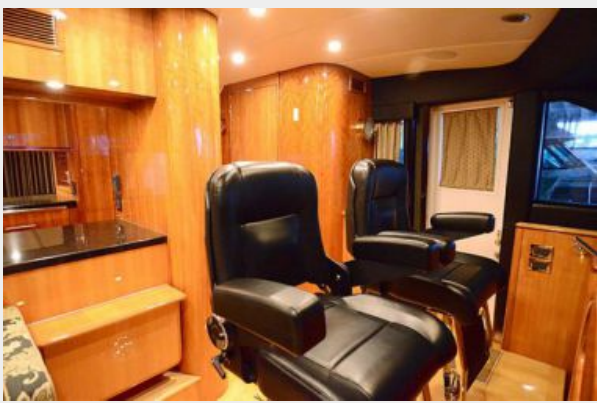
Helm Controls



Helm Controls



Helm Seats



Helm Seats



Stairs



Helm Guest Seating



Engine Room



Engine Room



Generator



Tender & Davit



2017 Bottom Job



2017 Bottom Job



2017 Bottom Job



2017 Bottom Job



CONTACTS

Andrey Shestakov, leading yacht broker of the sales department of Shestakov Yacht Sales Inc. Shestakov Yacht Sales Inc., the official representative of the Miami/Fort Lauderdale FL headquarters.

Contact details

Email: andrey@shestakovyachtsales.com

Web: shestakovyachtsales.com/en/

Telephones

USA: +1(954)274-4435

Office hours

Monday – Saturday: **9:00 - 21:00** EDT

Sunday: **closed**

Address



Harbour Towne Marina, 850 NE 3rd St,
STE 213, Dania, FL 33004