

OUR TRADE — VIKING



Судостроитель: VIKING

Год постройки: 2011

Модель: Моторная яхта

Цена: **ЦЕНА ЯХТЫ ПО ЗАПРОСУ**

Местонахождение: United States

Длина общая: 76' 0" (23.16m)

Ширина: 20' 3" (6.17m)

Купить **OUR TRADE — VIKING** а также выбрать подходящую вам яхту из нашего каталога яхт вам поможет опытный яхтенный брокер Андрей Шестаков. На сегодняшний день компания **Shestakov Yacht Sales Inc.** имеет большое количество яхт в собственном списке продаж, а также тесно сотрудничает со всеми крупными яхтенными производителями по всему миру.

Для того чтобы купить яхту **OUR TRADE — VIKING** а также проконсультироваться по любому вопросу связанному с покупкой, продажей, чартером яхт позвоните по телефону **+7(918)465-66-44**.

ОГЛАВЛЕНИЕ

ОГЛАВЛЕНИЕ	2
ХАРАКТЕРИСТИКИ	5
Обзор	5
Основная информация	5
Размеры	5
Скорость, вместимость и масса	5
Размещение	5
Корпус и палуба	5
Информация о двигателе	6
ПОДРОБНОЕ ОПИСАНИЕ	7
Remarks	7
Salon and Day Head	7
Galley and Dinette	8
Companionway	8
Master Stateroom	8
Master Head	9
Forward VIP Stateroom	9
Forward Stateroom Head	9
Starboard Stateroom and Head	9
Port Stateroom Aft	10
Port Head	10
Port Stateroom Forward	10
Cockpit	10
Deck and Hull	11
Fly Bridge	11
Engine and Mechanical	12
Electronics	13
Exclusions	13

Disclaimer	13
Исключения	14
Отказ от ответственности	14
ФОТОГРАФИИ	15
Salon TV	15
Salon	15
Salon Seating	15
Salon	15
Dinette	15
Sub Zeros	15
Galley	16
Galley	16
Galley	16
Day Head	16
Master Stateroom	16
Master Stateroom	16
Master Stateroom	17
Master Stateroom	17
Master Stateroom	17
Master TV	17
Name	17
VIP Stateroom	17
VIP Stateroom	18
VIP TV	18
VIP Head	18
VIP Head	18
Starboard Stateroom	18
Starboard Guest Head	18
Port Forward Stateroom	19

Port Aft Stateroom	19
Electrical Panel	19
Guest Head	19
Recessed Electronics Box	19
Recessed Electronics Box	19
Helm	20
Pod	20
Helm Seating	20
Flybridge Seating	20
Fighting Chair	20
Mezzanine Seating	20
Cockpit	21
Valve Covers	21
Starboard Generator	21
Port Generator	21
Engine Room	21
Engine Room	21
Port Engine	22
КОНТАКТЫ	23
Контактная информация	23
Телефоны	23
Время работы	23
Адрес	23

ХАРАКТЕРИСТИКИ

Обзор

Galati Yacht Sales has been committed to exceeding the expectations of its customers for more than 42 years, and we understand that purchasing a boat is a big decision. Our professional staff is here to assist you in every way – before, during and after the sale. Please feel free to contact us with any questions that you may have.

Основная информация

Тип судна: Моторная яхта

Подкатегория: Convertible

Модельный год: 2011

Год постройки: 2011

Страна: United States

Регистрационный номер: 1229528

Размеры

Длина общая: 76' 0" (23.16m)

Ширина: 20' 3" (6.17m)

Скорость, вместимость и масса

Водоизмещение: 136200 Pounds

Вместимость воды: 425 Gallons

Вместимость сточного бака: 255 Gallons **Объем топливного бака:** 3175 Gallons

Размещение

Всего кают: 5

Корпус и палуба

Материал корпуса: Fiberglass

Информация о двигателе

Двигатели: 2

Производитель: MTU

Модель: 16V M94

Тип двигателя: Inboard

Тип топлива: Diesel

ПОДРОБНОЕ ОПИСАНИЕ

Remarks

ESC coverage until November 2015

The Green Machine is a 2011 76' Viking that is the nicest, cleanest and most pristine boat on the market today. She only has 576 hours on her MTU M94's with 2600HP. This vessel is fully fish rigged and ready to travel anywhere. A few of the highlights are:

- State of the Art Electronics
- PBT Tower
- Hydraulic Outriggers
- Teak Deck
- Release Marine Chair Packages
- No Windows in Hull sides
- Extra Fuel Tank

The list goes on and on! I challenge you to find a cleaner 76' Viking anywhere.

Salon and Day Head

- Electric Salon Door
- Upgraded Bose Entertainment System
- Carpet Runner
- Custom Dewberry Style Sofa with Arm Rest
- Release Custom Coffee Table
- Hardwired Lamp
- Fluted Teak Lambrequins
- Dimmer on Overhead Lights
- Amtico Flooring at Salon Entrance
- 55" Pop-up Television
- Fluted Teak Valances
- Day Head
- Custom Flooring in Day Head
- Custom Sink and Faucet in Day Head
- Towel Bar and Ring in Day Head
- Teak Strips in Salon Headliner
- Granite Counter Top in Day Head
- Custom Liquor Storage in Entertainment Center
- 3 Custom Backless Bar Stools
- Baby Ostrage Headliner

Galley and Dinette

- 6 Under Counter Refrigeration Drawers
- Trash Compactor
- Granite Countertops
- 3 Bar Stools
- Microwave
- Stainless Steel Sink
- 4 Burner Surface Mount Range
- Custom Amtico Flooring
- Satin Nickel Faucet
- Amtico Flooring under Dinette
- Port and Starboard Storage Rooms Forward of Galley
- Enlarged Dinette for more Seating
- Release Marine Custom Dinette Table
- Garbage Disposal

Companionway

- Vertical Teak Strips
- Teak Toe Kick along Companionway Steps
- Central Vacuum System
- Washer and Dryer
- Recessed Overhead Lighting
- Carpet Runner

Master Stateroom

- Full Beam Master
- Custom Wallpaper Throughout
- Custom Carpet
- Custom Settee
- Safe under Bed
- System #3 Upgraded King Size Mattress
- Teak End Table Top
- 40" Flat Screen TV with Teak Trim
- Desk
- Hanging Locker with Custom Drawers
- Teaks Stripes in Head Liner
- Upgraded 18k BTU Air Handler
- Teak Book Case
- Tray Ceiling with Teak Trim

- Bose Surround Sound System
- Telephone Outlet
- Overhead LED Lights

Master Head

- Mirrored Ceiling
- Custom Amtico Flooring Satin Show Flooring
- Full Size Shower with One Piece Door
- Side by Side Sinks
- Medicine Cabinet
- Custom Wallpaper
- Granite Counter Tops

Forward VIP Stateroom

- Island Queen Bed
- Mattress Upgrade
- 26" Flat Screen TV with Teak Frame
- DVD and Stereo System
- Hanging Locker Custom Wallpaper
- Cabinet Storage Port and Starboard
- Storage under bed

Forward Stateroom Head

- Mirrored Ceiling
- Granite Counter Tops
- Custom Amtico Flooring
- Custom Wallpaper
- Medicine Cabinet
- One Piece Shower Door
- Satin Fixtures in Shower
- Towel Ring and Bar

Starboard Stateroom and Head

- Upper and Lower Bunks
- Mattress Upgrade
- 19" Flat Screen TV
- Custom Wallpaper

- Custom Carpet
- Mirrored Ceiling in Head
- Custom Amtico Flooring in Head
- Chrome Shower Door
- Towel Ring and Bar
- Granite Vanity Top
- Medicine Cabinet
- Custom Wallpaper in Head

Port Stateroom Aft

- Custom Layout of a Full Size Bed with a Cross Bunk
- Mattress Upgrade
- Teak Valances
- Teak Shelf
- Large Hanging Locker
- Flat Screen TV

Port Head

- Granite Counter Tops
- Medicine Cabinet
- Mirrored Ceiling
- Satin Fixtures
- One Piece Shower Door
- Full size Shower
- Towel Ring and Bar
- Custom Wallpaper
- Custom Amtico Flooring

Port Stateroom Forward

- Upper and Lower Bunks
- Mattress Upgraded
- Flat Screen TV
- Custom Carpet
- Large Hanging Locker

Cockpit

- Live Well in Sole

- Refrigerated Step Box
- Transom Coaming with Gate and Transom Fish Box
- Refrigerated Port Mezzanine Step Box
- Cockpit A/C
- Crushed Ice Discharge in Port Mezzanine Box
- Two 24V Outlets under Coaming Forward
- Awlgriped Lazarette
- Y-Valve for Fresh and Salt Water Wash Down
- White Shore Cords
- Storage Lockers Under Port and Starboard Coaming
- Release Screw-Less Rod Holders
- Fish Box in Sole with Macerator
- Electric Door Button on Tackle Center
- 2 Bait Trays for Lower Mezzanine Freezer
- Dual LED Color Lighting- Green and White
- Green and White Rope Lighting under Coaming
- Mezzanine Arm rest
- Release Trillian Series Fighting Chair
- Teak Deck and Mezzanine

Deck and Hull

- Deleted Two Aft Hatches on Foredeck
- Freshwater Wash Down in Anchor Locker
- Stainless Chafe Guard Plate at Bow
- No Bow Rail
- BIK Mask
- Fuel Fills on both Port and Starboard side
- Hull Color is J&T Green
- Custom Boot Stripe
- Side Mount Handrails Follow Salon Window
- Deleted Windows in Hull Side
- Deleted Pulpit
- Capstan Hydraulic Windlass
- Hydraulic Bow Thruster
- Fiberglass Side through Hulls
- Awlgriped Lazarotte, Engine Room and Bilges
- Extra Fuel Tank

Fly Bridge

- PBT Tower

- Recessed Electric Teaser Reels- EPOCH US9
- Drop Down Electronics Box in Hardtop
- Release Marine Helm Pad
- Single Lever Controls with Bow Thruster Buttons
- 3 Release Marine Helm Chairs
- Raised Teak Platform at Helm
- Hydraulic Outriggers
- Port and Starboard Bench Seating
- Port and Starboard Jumpset Backrest
- Freezer
- Drink Box
- Freshwater Wash Down
- Under Helm Access with Light and Storage
- Storage Under all Bench Seating
- Trim Tab Controls
- Center Console with Walk-around Helm
- Drop Down
- Recessed Electronics Boxes
- Moritz Monitor Dedicate Batteries for Electronics
- MTU Bridge Controls
- Locks on Bench Seats and Helm Access
- Upgraded Flybridge Cushions

Engine and Mechanical

- Twin Gensets
- 1400 GPD Watermaker
- Ice Chipper
- All pumps are white in Engine Room
- Dockside Oil Change System
- Tool Box- Painted White
- Snow White Filters
- Awlgriped Brass thru Hulls and Sea Strainers
- 110V Outlet on Bulk Head
- C-Power Shore Power Transformers
- Tee in dockside Water Manifold to fill Water Tank
- Magnetic Switches for Bilges
- A/C Chiller System
- Fire Suppression System
- Fuel Priming Pumps
- Water Heater

Electronics

- Four 17" KEP LED Glass Displays
- Furuno Navnet 3D Radar
- Furuno Navnet 3D Plotter with NOAA

- Roster Charts for Entire US Coastline

- Including Alaska and Hawaii

- Navnets have Output to Salon TV
- Garmin Plotter
- Simrad Autopilot
- Furuno Navnet Sounder
- Two VHF ICOM M604's
- Two External VHF Speakers
- VHF Command Mic in Salon
- VHF Comman Mic in Tower
- Fusion Stereo System
- Stereo Speakers in Engine Room
- SAT KVH FB150 Track Phone
- 2 Panasonic Cordless Phones
- SAT Weather
- 4 Engine Room Cameras
- ACR RCL Remote Spotlight
- KVH SAT TV HD7
- 4 DSS Receivers
- Magellan Security Alarm System
- EPIRB
- Navnet Plotter-Tower
- RD30- Tower
- 6 LED Green Underwater Lights

Exclusions

Owner's personal property.

Disclaimer

The Company offers the details of this vessel in good faith but cannot guarantee or warrant the accuracy of this information nor warrant the condition of the vessel. A buyer should instruct his agents, or his surveyors, to investigate such details as the buyer desires validated. This vessel is offered subject to prior sale, price change, or withdrawal without notice.

Исключения

При продаже яхты исключаются личные вещи владельца.

Отказ от ответственности

Компания предоставляет описание судна или яхты добросовестно, но не может гарантировать точность этой информации, а также не ручается за техническое состояние. Покупатель должен проинструктировать своих агентов или оценщиков исследовать представленную информацию более подробно, по собственному желанию. Продажа судна или яхты, изменение цены или снятие с продажи будет происходить без предварительного уведомления.

ФОТОГРАФИИ

Salon TV



Salon



Salon Seating



Salon



Dinette



Sub Zeros



Galley



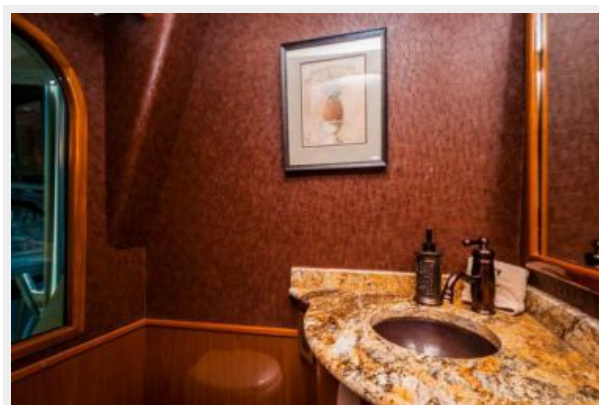
Galley



Galley



Day Head



Master Stateroom



Master Stateroom



Master Stateroom



Master Stateroom



Master Stateroom



Master TV



Name



VIP Stateroom



VIP Stateroom



VIP TV



VIP Head



VIP Head



Starboard Stateroom



Starboard Guest Head



Port Forward Stateroom



Port Aft Stateroom



Electrical Panel



Guest Head



Recessed Electronics Box



Recessed Electronics Box



Helm



Pod



Helm Seating



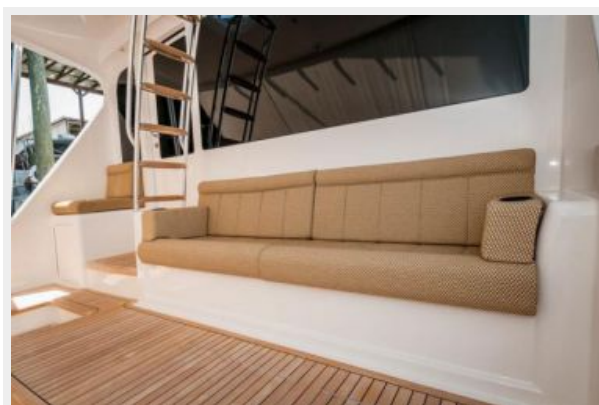
Flybridge Seating



Fighting Chair



Mezzanine Seating



Cockpit



Valve Covers



Starboard Generator



Port Generator



Engine Room



Engine Room



Port Engine



КОНТАКТЫ

Андрей Шестаков (Andrey Shestakov) – ведущий яхтенный брокер отдела продаж яхт и судов компании Shestakov Yacht Sales Inc. Официальный представитель Shestakov Yacht Sales Inc. для русскоговорящих клиентов в центральном офисе компании в Майами/Форт Лодердейл/Флорида/США.

Контактная информация

Email: andrey@shestakovyachtsales.com

Web: shestakovyachtsales.com

Телефоны

Краснодарский край: **+7(918)465-66-44**

США, Майами, Флорида: **+1(954)274-4435**

Время работы

Понедельник – Суббота: **9:00 - 21:00**
EDT

Воскресенье: **Закрыто**

Адрес



Harbour Towne Marina, 850 NE 3rd St,
STE 213, Dania, FL 33004