

CARTUXA II — WINDY BOATS



Builder: WINDY BOATS

Year Built: 2006

Model: Motor Yacht

Price: PRICE ON APPLICATION

Location: United Kingdom

LOA: 25' 1" (7.65m)

Beam: 8' 2" (2.49m)

Cruise Speed: 31 Kts. (36 MPH)

Max Speed: 42 Kts. (48 MPH)

Our experienced yacht broker, Andrey Shestakov, will help you choose and buy a yacht that best suits your needs **CARTUXA II — WINDY BOATS** from our catalogue. Presently, at Shestakov Yacht Sales Inc., we have a wide variety of yachts available on our sale's list. We also work in close contact with all the big yacht manufacturers from all over the world.

If you would like to buy a yacht **CARTUXA II — WINDY BOATS** or would like help answering any questions concerning purchasing, selling or chartering a yacht, please call **+1(954)274-4435**

TABLE OF CONTENTS

TABLE OF CONTENTS	2
SPECIFICATIONS	3
Overview	3
Basic Information	3
Dimensions	3
Speed, Capacities and Weight	3
Accommodations	3
Hull and Deck Information	4
Engine Information	4
DETAILED INFORMATION	5
Extras Above Standard Configuration	5
Construction	5
Engine Configuration	5
Tankage	6
Electrical System	6
Plumbing	7
Accommodation	7
Cockpit	7
Exclusions	8
Disclaimer	8
PHOTOS	9
CONTACTS	12
Contact details	12
Telephones	12
Office hours	12
Address	12

SPECIFICATIONS

Overview

2006 example of the much loved Mini Cooper of the seas. This Windy 25 Mirage has low hours and is really quite shiny!

Basic Information

Category: Motor Yacht

Model Year: 2006

Year Built: 2006

Country: United Kingdom

Dimensions

LOA: 25' 1" (7.65m)

Beam: 8' 2" (2.49m)

Speed, Capacities and Weight

Cruise Speed: 31 Kts. (36 MPH)

Cruise Speed RPM: 2800 Kts.

Max Speed: 42 Kts. (48 MPH)

Max Speed RPM: 3630 Kts.

Displacement: 4188.782978 Pounds

Water Capacity: 75 Gallons

Fuel Capacity: 300 Gallons

Accommodations

Total Cabins: 1

Total Berths: 2

Total Heads: 1

Hull and Deck Information

Hull Material: GRP

Deck Material: GRP

Hull Configuration: Planing

Hull Finish: Aluminum

Hull Designer: Hans J Johnsen

Engine Information

Engines: 1

Manufacturer: Volvo Penta

Model: D4-260

Engine Type: Inboard

Fuel Type: Diesel

DETAILED INFORMATION

Extras Above Standard Configuration

- Upgrade to Sunbrella cockpit upholstery.
- Upgrade to Nextel Anti-glare dash.
- Upgrade to Mahogany transom.
- Blue hull stripe.
- Holding tank with 3/way valve.
- Teak laid decking in cockpit.
- Teak laid decking on bathing platform.
- Radio CD player with 4x speakers.
- Tonneau cover (Dark Blue).
- Ski eye.
- Winter cover.
- Raymarine ST40 speed and depth instrument.
- Trailer available by negotiation.

Construction

Windy are a product of traditional craftsmanship, enhanced with the aid of modern technology. The latest technological innovation is the Wintec hull concept, which gives improved performance, greater strength and reduced noise throughout the vessel. The hull is reinforced with advanced multi axial glass fibre matting and Divinycell. This allows a reduction in the boats weight of up to 20% whilst offering noticeably improved stability. All the Windy models are CE-labelled. This means that Windy meets all the requirements laid down for quality control documentation and product liability within the EU. In the process of obtaining approval, the company has also introduced new methodologies construction principals and more advanced construction production equipment, resulting in more cost-effective and quality oriented processes in-house. But above all, Windy is a "Boat Builder" and not a manufacturer of boats, a philosophy, which characterises their production staff and all those within their distribution network. *Lay up Weights (Reinforcement Only):* Deck - 8.7oz/ft² (2.65kg/m²) Topsides - 8.4oz/ft² (2.55kg/m²) & Divinycell Sandwich Chine - 21.1oz/ft² (6.45kg/m²) Bottom – 15.9oz/ft² (4.85kg/m²) Keel – 22.1oz/ft² (6.75kg/m²)

Engine Configuration

- Volvo Penta D4-260 EVC DP.
- Volvo Penta DPH drive.

The D4-series is compact high performance, the new D4-300 even matches big-block gasoline V8's. Coupled to the fully matched DPH drive, the D4-engines give perfect driving feel, reliability

and safety. Low on noise and exhausts, plus low vibrations further reduced by the balance shafts and optimised engine suspension. Fuel consumption is low compared to other diesels, minimal compared to gasoline alternatives.

- Common rail fuel injection.
- Electronic controls as standard.
- In-line 4-cylinder compactness.
- Turbo and aftercooler.
- Compressor.
- Robust design with ladder frame.
- Integrated balance shafts.
- Engine-mounted seawater filter.
- Patented X-act steering with external steering cylinders.
- Genuine through-the-drive exhaust.

Summary of Use: 824 nautical miles logged; 139 hours. During the 5 years she's belonged to her current owner, the yacht has been moored outside his house in Sweden for a few summer weeks every year. In total CARTUXA II has been in the water for about 5 months, and for the remaining ~55 months it has been stored in-doors by MP Marin (authorized Volvo Penta engineers). *Note:* 2010 June 28 – August 29, 61 days, 180nm. 2011 July 17 – August 2, 15 days, 103nm. 2012 June 20 – August 3, 45 days, 53nm. 2013 July 22 – August 2, 11 days, 98nm. 2014 June 26 – July 31, 35 days, 156 nm. They have also serviced the yacht every autumn, regardless of how little it has been used. 2010-07-04 - After purchase check. 2010-10-26 - Yearly Service. 2011-09-02 - Yearly Service. 2011-09-02 - Yearly Service. 2013-06-13 - New Steering Cylinders with new Hydraulic hoses, New Hydraulic hoses for Engine Trim, New Top Drive and Exhaust Bellows. 2014-07-31 - Yearly Service. **Performance and Economy:** Revs, Knots, L/NM, L/H, DBA 1000, 6.1, 0.62, 3.8, 75. 1500, 9.2, 1.19, 11.0, 76. 2000, 16.4, 1.00, 16.6, 82. 2500, 26.2, 0.94, 24.6, 80. 2800, 31.3, 0.94, 29.5, 81. 3000, 34.5, 0.99, 34.1, 82. 3200, 37.0, 1.05, 38.9, 82. 3400, 39.4, 1.16, 45.7, 83. 3630, 42.3, 1.26, 53.5, 83. Note - these figures are taken from Volvo performance tests and are intended as a guide only

Tankage

- Fuel tank (Aluminium) – approx 300 litres (66 gallons).
- Water tank (Aluminium) – approx 75 litres (15.5 gallons).
- Fuel & water tank level gauges.

Electrical System

- 12V electrical system.
- 1x Engine battery.
- 1x Service battery.
- Switch panel with isolators & circuit breakers.

Miscellaneous Electrical Equipment:

- Navigation lights.
- 12V Accommodation lighting.
- Windscreen wiper.

Plumbing

- Pressurised fresh water system.
- Transom shower.
- Manual & electric bilge pumps.

Accommodation

Main Cabin:

- Luxury fittings in high gloss wood.
- Luxury bulkhead and deck head linings .
- Teak and holly cabin sole.
- Large U-shaped sofa.
- Retractable high gloss table.
- Infill to convert sofa to double berth.
- Lockers.
- Mirror on forward bulkhead.
- Portlight.
- Opening central deck hatch.
- 12V Ceiling lights.
- Sea heads with retractable lid under sofa.

Cockpit

- Adjustable helm & co-pilot seats.
- Stainless steel handholds on windscreen.
- Self draining cockpit.
- Shower on bathing platform.
- Windscreen wiper.
- Top stowing refrigerator.
- Large U-shaped sofa.
- Hydraulically supported engine hatch.

- Tonneau cover.
- Full enclosing camper canopy.
- Canopy garage on transom.
- Opening gate in windscreen.
- Steps leading onto foredeck.
- Bathing platform with transom shower.

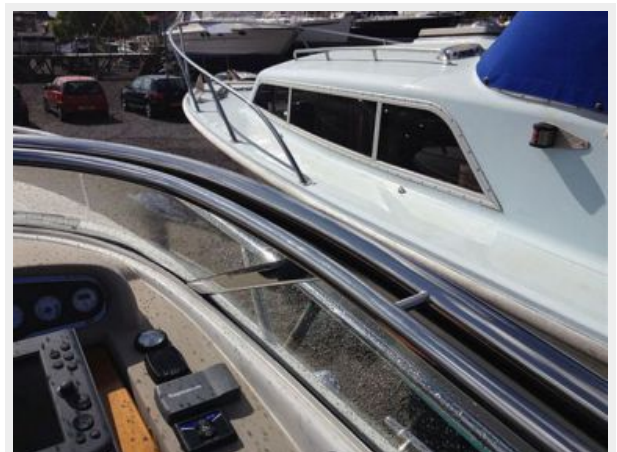
Exclusions

Owner's personal belongings.

Disclaimer

The Company offers the details of this vessel or yacht in good faith but cannot guarantee or warrant the accuracy of this information nor warrant the condition of the vessel. A buyer should instruct his representatives, agents, or his surveyors, to investigate such details as the buyer desires validated. This vessel or yacht is offered subject to prior sale, price change, or withdrawal without notice.

PHOTOS







CONTACTS

Andrey Shestakov, leading yacht broker of the sales department of Shestakov Yacht Sales Inc. Shestakov Yacht Sales Inc., the official representative of the Miami/Fort Lauderdale FL headquarters.

Contact details

Email: andrey@shestakovyachtsales.com

Web: shestakovyachtsales.com/en/

Telephones

USA: +1(954)274-4435

Office hours

Monday – Saturday: **9:00 - 21:00** EDT

Sunday: **closed**

Address



Harbour Towne Marina, 850 NE 3rd St,
STE 213, Dania, FL 33004