

HOW SWEET IT IS — SEA RANGER



Builder: SEA RANGER

Year Built: 1986

Model: Motor Yacht

Price: PRICE ON APPLICATION

Location: United States

LOA: 52' 0" (15.85m)

Beam: 15' 4" (4.67m)

Max Draft: 4' 0" (1.22m)

Our experienced yacht broker, Andrey Shestakov, will help you choose and buy a yacht that best suits your needs **How Sweet It Is — SEA RANGER** from our catalogue. Presently, at Shestakov Yacht Sales Inc., we have a wide variety of yachts available on our sale's list. We also work in close contact with all the big yacht manufacturers from all over the world.

If you would like to buy a yacht **How Sweet It Is — SEA RANGER** or would like help answering any questions concerning purchasing, selling or chartering a yacht, please call **+1(954)274-4435**

TABLE OF CONTENTS

TABLE OF CONTENTS	2
SPECIFICATIONS	3
Overview	3
Basic Information	3
Dimensions	3
Speed, Capacities and Weight	3
Accommodations	3
Hull and Deck Information	3
Engine Information	4
DETAILED INFORMATION	5
Accommodations	5
Galley	5
Deck Equipment	5
Electronics	5
Mechanical	5
Remarks	6
Exclusions	6
Disclaimer	6
PHOTOS	7
CONTACTS	10
Contact details	10
Telephones	10
Office hours	10
Address	10

SPECIFICATIONS

Overview

What a great two stateroom, two head layout and all in impeccable condition. She has a new Bimini top and enclosure and pride of ownership shows all over.

Basic Information

Category: Motor Yacht

Sub Category: Cockpit

Model Year: 1986

Year Built: 1986

Country: United States

Dimensions

LOA: 52' 0" (15.85m)

Beam: 15' 4" (4.67m)

Max Draft: 4' 0" (1.22m)

Speed, Capacities and Weight

Displacement: 46000 Pounds

Water Capacity: 350 Gallons

Holding Tank: 45 Gallons

Fuel Capacity: 850 Gallons

Accommodations

Total Cabins: 2

Total Heads: 2

Hull and Deck Information

Hull Material: Fiberglass

Engine Information

Engines: 2

Manufacturer: Volvo

Model: TAMD70E

Engine Type: Inboard

Fuel Type: Diesel

DETAILED INFORMATION

Accommodations

Two queen staterooms, two full heads, covered aft deck, great salon, IMPECCABLE CONDITION!! Beginning forward is the guest stateroom with a walk around queen berth, plenty of drawer and hanging storage and split head with the shower to port and the commode and vanity to starboard, aft is the galley to port and storage to starboard, up three steps is the salon with a lower helm station to starboard and a two seat bar to port, there is a Futon Love seat and two chairs. The master suite is aft and down three steps and features a walk around queen berth, massive storage all around, vanity and a full head with separate stall shower. There is private access to the cockpit via a door and hatch aft. The décor is teak paneling and cabinetry throughout with teak and holly flooring and a classic vinyl and teak batten head liner, natural Maple Futon furniture.

Galley

The galley is down and to port of the salon with a Norcold upright refrigerator and freezer, single stainless sink, Princess three burner electric stove and oven, teak and holly flooring, Formica and teak cabinetry and counter tops, U-Line ice maker, ten gallon electric water heater, sub zero freezer and additional refrigerator.

Deck Equipment

Hard top over aft deck, new blue Bimini top and flybridge curtains, four sided enclosure with four zip outs, built in L-shaped seating, starboard table, two wicker chairs and one love seat, transom door, swim platform, roto cast helm chair, teak hand and toe rails, four deck prisms for natural interior lighting, mesh front window cover, three windshield wipers, starboard wing door, four fender racks, Rayline remote electric spotlight, FBG bow pulpit with Ideal chain and rope windlass, Danforth anchor, and 12 volt spreader lights.

Electronics

Polaroid 27" flat panel TV, 6" Ritchie compass, Garmin 2010C GPS map, 5" Ritchie compass, Apelco VHF, Furuno 1715 24 mile radar, Emerson VHS VCR, and Radar arch.

Mechanical

Twin 307HP Volvo TAMD70E 6 Cylinder diesel engines with 3030 hours, Kohler 8KW generator with 1828 hours, Twin Disc 507 1.98:1 marine gears, 2.5" shafts, Verna Lift mufflers, Racor 1000 fuel filters, ProMariner 12 volt 60 amp battery charger, oil change system, Morse

engine controls, and Hydraulic wheel steering.

Remarks

How Sweet It Is has been impeccably well maintained and shows as such. She is ready to go and should fly through any survey. At \$114,000.00 she is the best priced Sea Ranger 52 cockpit motor yacht on the market and offers are encouraged.

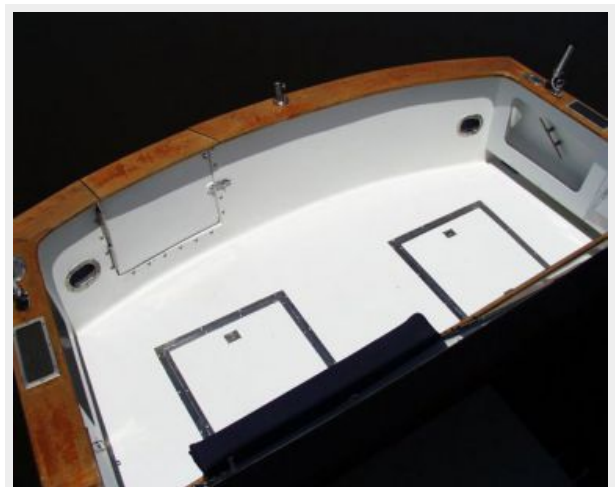
Exclusions

Owner's personal belongings.

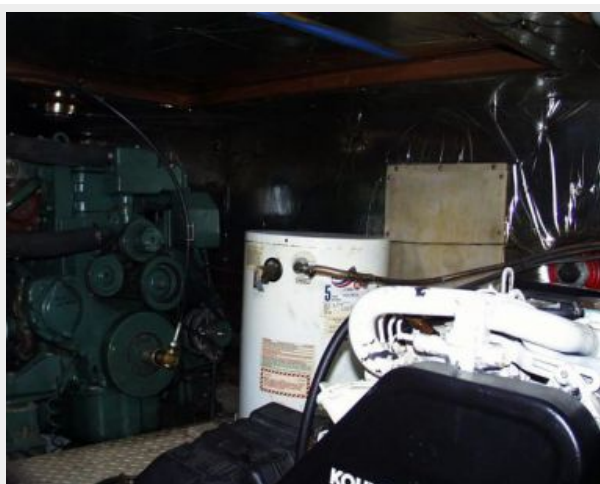
Disclaimer

The Company offers the details of this vessel or yacht in good faith but cannot guarantee or warrant the accuracy of this information nor warrant the condition of the vessel. A buyer should instruct his representatives, agents, or his surveyors, to investigate such details as the buyer desires validated. This vessel or yacht is offered subject to prior sale, price change, or withdrawal without notice.

PHOTOS







CONTACTS

Andrey Shestakov, leading yacht broker of the sales department of Shestakov Yacht Sales Inc. Shestakov Yacht Sales Inc., the official representative of the Miami/Fort Lauderdale FL headquarters.

Contact details

Email: andrey@shestakovyachtsales.com

Web: shestakovyachtsales.com/en/

Telephones

USA: +1(954)274-4435

Office hours

Monday – Saturday: **9:00 - 21:00** EDT

Sunday: **closed**

Address



Harbour Towne Marina, 850 NE 3rd St,
STE 213, Dania, FL 33004