

REDEMPTION — WESTPORT



Builder: WESTPORT

Year Built: 2004

Model: Motor Yacht

Price: PRICE ON APPLICATION

Location: United States

LOA: 130' 0" (39.62m)

Beam: 26' 0" (7.92m)

Max Draft: 6' 6" (1.98m)

Cruise Speed: 21 Kts. (24 MPH)

Max Speed: 25 Kts. (29 MPH)

Our experienced yacht broker, Andrey Shestakov, will help you choose and buy a yacht that best suits your needs **REDEMPTION — WESTPORT** from our catalogue. Presently, at Shestakov Yacht Sales Inc., we have a wide variety of yachts available on our sale's list. We also work in close contact with all the big yacht manufacturers from all over the world.

If you would like to buy a yacht **REDEMPTION — WESTPORT** or would like help answering any questions concerning purchasing, selling or chartering a yacht, please call **+1(954)274-4435**

TABLE OF CONTENTS

TABLE OF CONTENTS	2
SPECIFICATIONS	6
Overview	6
Basic Information	6
Dimensions	6
Speed, Capacities and Weight	6
Accommodations	7
Hull and Deck Information	7
Engine Information	7
DETAILED INFORMATION	8
Aft Deck	8
Salon	8
Day Head	9
Dining	9
Galley	9
Pilothouse	9
Electronics	10
Master Stateroom	10
Master Head	11
VIP Stateroom / Starboard	11
VIP Head / Starboard	12
VIP Stateroom / Port	12
VIP Head / Port	12
Guest Stateroom / Port	13
Guest Head / Port	13
Guest Stateroom / Starboard	13
Guest Head / Starboard	14
Captain / Crew Quarters & Lounge	14

Captain / Crew Head	15
Upper Deck Lounge	15
Flybridge	15
Boat Deck	16
Foredeck	16
Mechanical Equipment	16
Electrical Systems	17
Plumbing	18
Control Room	18
Storage / Utility / Engineer's Cabin	18
Miscellaneous Equipment	19
Tender	19
Safety & Fire Protection	19
Remarks	19
Exclusions	19
Exclusions	20
Disclaimer	20
PHOTOS	21
Aft Deck	21
Aft Deck	21
Salon	21
Salon	21
Salon	21
Dining	21
Dining	22
Foyer	22
Day Head	22
Galley	22
Galley	23

Galley	23
Pilothouse	23
Skylounge	23
Lower Foyer	23
Master Stateroom	23
Master Stateroom	24
Master Head	24
Master Head	24
Guest Stateroom	24
Guest Head	25
Guest Stateroom	25
Guest Stateroom	25
Guest Stateroom	25
Guest Head	25
Guest Stateroom	25
Guest Stateroom	26
Guest Head	26
Guest Stateroom	26
Guest Stateroom	26
Guest Head	26
Bow	26
Sun Deck	27
Sun Deck	27
Upper Deck	27
Flybridge / Bar	27
Upper Deck	27
Skylounge Deck	27
Skylounge Deck / Jacuzzi	28
Jacuzzi	28

Walk-Around Deck	28
Walk-Around Deck	28
Engine Room	28
Engine Room	28
Engine Room	29
CONTACTS	30
Contact details	30
Telephones	30
Office hours	30
Address	30

SPECIFICATIONS

Overview

“**Redemption**” is hull # 8 of Westport’s highly successful 130 series. The yacht has received nearly \$1M in mechanical and system updates over the last year to ensure she is in top condition and a turn-key operation that is ready to travel anywhere today. “**Redemption**” is currently out of the water at LMC in Fort Lauderdale undergoing various updates for the fall season.

Owner’s wish to move up makes her available and an incredible opportunity!

Basic Information

Category: Motor Yacht

Model Year: 2004

Year Built: 2004

Country: United States

Vessel Top: Hardtop

Fly Bridge: Yes

Dimensions

LOA: 130' 0" (39.62m)

Beam: 26' 0" (7.92m)

Max Draft: 6' 6" (1.98m)

Speed, Capacities and Weight

Cruise Speed: 21 Kts. (24 MPH)

Max Speed: 25 Kts. (29 MPH)

Displacement: 370000 Pounds

Water Capacity: 1620 Gallons

Holding Tank: 1360 Gallons

Fuel Capacity: 9900 Gallons

Accommodations

Total Cabins: 5

Sleeps: 8

Total Heads: 7

Captain Cabin: True

Crew Cabin: 4

Hull and Deck Information

Hull Material: Fiberglass

Deck Material: Teak

Hull Configuration: Modified V-Hull

Hull Designer: William Garden

Exterior Designer: Greg Marshall

Interior Designer: Westport

Engine Information

Engines: 2

Manufacturer: MTU

Model: 12V4000

Engine Type: Inboard

Fuel Type: Diesel

DETAILED INFORMATION

Aft Deck

Aft Deck bar with TV, phone jacks, Whirlpool refrigerator, Whirlpool icemaker, Corian Magna Savannah top, sink with hot & cold water, storage.

- Spiral staircase up to boat deck and down to control room with stainless steel handrail
- Control room stairs, vinyl covered teak treads up to boat deck
- Hitachi 37" Plasma display TV
- Stereo Volume control & speakers from main system
- Mitsubishi VCR
- Sony DVD player
- Larger capstan installed on Aft Deck to replace capstans on swim platform
- Larger cleats on Aft Deck
- Removed lower capstan
- Molded-in Settee with cushions
- (1) Teak bench with cushions
- (2) Teak serving trays
- 72" Round Westcoast Teak dining table with fixed SS pedestal by Crown, LTD & eight
- (8) Teak dining chairs with cushions
- (3) Teak bar stools with cushions
- (2) Teak lounge chairs with cushions
- (1) Teak side table

Salon

- Sofa
- Cocktail table
- End tables
- Occasional chairs
- Game table with four chairs
- Blinds
- Stainless steel framed glass sliding door
- Large entry in foyer starboard side with A-Look mirrored overhead treatment
- Marble on starboard companionway floor
- Apple TV video system
- Storage for CDs, videotapes & DVDs
- 50" Samsung LED TV on electric lift with remote
- Dining table with ten chairs
- Vinyl headliner with vaulted ceiling over dining area
- Wine cooler in custom cherry cabinet

- Volume control & speakers from main stereo system in Dining area

Day Head

- Headhunter Royal Flush Hydro Vac Toilet
- Mirrored overhead
- Marble vanity top
- Marble flooring
- Black Kohler Caxton under-mount sink
- THG Elegance faucet with polished gold finish & Onyx accent color
- Coordinating bath accessories by THG include: soap dish, covered toilet paper holder & towel ring

Dining

- Dining table with ten chairs
- Vinyl headliner with vaulted ceiling over dining area
- Wine cooler in custom cherry cabinet
- Volume control & speakers from main stereo system in dining area

Galley

- Kohler stainless steel sink
- Grohe faucet
- Corian Table and countertops
- Built-in Majilite fabric dinette settee
- Miele 48" refrigerator
- Miele cooktop and oven
- Insinkerator garbage disposal
- Broan trash compactor
- Starbuck's Saeco Espresso machine
- 20" LCD TV
- Speakers from main system with volume control
- Azrock commercial vinyl flooring
- Bosch dishwasher
- Kohler stainless steel sink
- Chrome Insta-Hot hot water dispenser
- Stainless steel overhead vent

Pilothouse

- V-SAT Omni access system
- 24" Stainless steel Destroyer helm station wheel with Jastram power steering
- Desk with laptop PC storage
- AM/FM CD Player with VCR and speakers
- Leather covered dash panels
- Chart drawer
- Leather settee
- Madrona Burl veneer with solid Cherry edge settee table
- Crown Classic leather helm chair
- Stain-resistant carpeting

Electronics

- Panasonic station telephone system with programmable phones, speakerphones,
- (17) Jack locations, Midship shore inlet with 100' combo CATV/telephone shore cord
- KVH TracPhone 252 satellite telephone with phone switch
- Seatel Satellite TV system with MS-8
- Tellular digital cellular black box single mode phone
- Loud hailer integrated with VHF (Does not work)
- B&G Hydra 2000 wind, depth and speed system with full function display on dash and in crew lounge, includes wind and compass options
- Elbex hi-resolution color pan/tilt/zoom cameras located forward of main entrance on the starboard side of main deck, port quarter of main deck and Engine Room
- Furuno NX-500 Navtex with NX-5
- Northern Airborne Technology NA-S1510 GPIRB
- NA-SART: S.A.R.T.
- Furuno Felcom Inmarsat C-12 standard "C" with roll printer
- (2) Furuno 2115 BB radars with 20" LCD flat screen monitors (both with ARPA)
- Furuno FCV-1200L video depth sounder (black box) with 15" LCD flat screen monitor
- Northstar 041XD GPS in Pilothouse
- 20" Nobeltec LDC flat screen monitor
- (2) Icom M-127 radios in Pilothouse, one (1) each ICOM M-127 in crew lounge & galley
- (2) Handheld VHF standard HX-255S with desktop chargers
- Icom M710-RT22 SSB with tuner
- Robertson AP20 autopilot system
- Westport proprietary vessel information and control system (VIC)
- Furuno Weatherfax 210 with fax 5
- V-Sat system – New in 2009 for internet 24/7

Master Stateroom

- Tempur-Pedic King mattress with two-drawer storage below

- Custom recessed room lights
- (2) 110V reading lights
- Indirect rope accent lighting under berth & above soffit
- Special lighting over berth
- (1) Table lamp
- Blinds with fixed Roman shade valances
- (2) Nightstands with drawers
- (2) Dressers
- Entertainment center with TV, VCR, 5-disc DVD changer & surround sound system and speakers
- Bronze A-look mirrors on bulkhead above headboard
- Clear full-length mirror on inside wardrobe door
- Walk-in wardrobe lined with aromatic cedar with light, stainless steel closet rod and cedar shelf with keeper
- Solid cherry framed doors with Madrona Burl Veneer panels
- Digital wall safe in walk-in closet
- End table with lamp at settee
- Built-in desk with chair
- Custom settee on starboard side
- Madrona Burl veneer counters with solid cherry edge

Master Head

- Headhunter Royal Flush Hydro Vac toilet
- Whirlpool bath/shower with Grohe thermostat & Hansa fixtures, Jado Oriental tub handles, silver nickel/gold finish
- (2) Kohler Vintage sinks with Jado Oriental fixtures, silver nickel/gold finish
- Wall hung mirror above sinks
- Vanities port & starboard, make-up vanity with stool & lights on port side
- Linen storage port & starboard
- Low voltage recessed room lights
- Vanity lights
- (2) Sconce lights at tub
- Lighted make-up mirror on port vanity
- Marble tile floor
- (2) Jado Oriental soap dish, covered toilet paper holder, 18" towel bar, tumbler holder and robe hook
- Volume control & speakers from main system

VIP Stateroom / Starboard

- King berth with Tempur-Pedic mattress, upholstered headboard and two-drawer storage

below

- Clear full-length mirror on inside wardrobe door
- Wardrobe lined with aromatic cedar shelf with keeper
- (2) Three-drawer nightstands
- Entertainment center with TV, DVD, sound system with speakers
- 100V AC recessed room lighting
- Indirect rope accent lighting under berth and above soffit
- Shoji screens
- Opening portlights with screens

VIP Head / Starboard

- Headhunter Royal Flush Hydro Vac Toilet
- Frameless tempered glass doors on shower and Grohe thermostat & Hansa fixtures
- Sealed shower light
- Jado Oriental bath accessories: Soap dish, covered toilet paper holder, towel bar, tumbler holder & robe hook
- Kohler Vintage sinks with Jado Oriental fixtures with silver nickel/gold finish
- Vanity
- Wall mirror above vanity
- 110V AC recessed room lights
- Vanity lighting
- Marble counters & floor

VIP Stateroom / Port

- King berth with Tempur-Pedic mattress, upholstered headboard and two-drawer storage below
- Clear full-length mirror on inside wardrobe door
- Wardrobe lined with aromatic cedar shelf with keeper
- (2) Three-drawer nightstands
- Shoji s screens
- Entertainment center with TV, DVD, sound system with speakers
- 100V AC recessed room lighting
- Indirect rope accent lighting under berth and above soffit
- Opening portlights with screens

VIP Head / Port

- Headhunter Royal Flush Hydro Vac Toilet
- Frameless tempered glass doors on shower and Grohe thermostat & Hansa fixtures
- Sealed shower light

- Jado Oriental bath accessories: one each: soap dish, covered toilet paper holder, towel bar, tumbler holder & robe hook
- Kohler Vintage sinks with Jado Oriental fixtures with silver nickel/gold finish
- Vanity
- Wall mirror above vanity
- 110V AC recessed room lights
- Vanity lighting
- Marble counters & floor

Guest Stateroom / Port

- Convertible twins with new mattress (2013)
- 110V Recessed room & reading lights
- Indirect rope accent lighting under berth and above soffit
- Bronze A-look mirrors on bulkhead above headboard
- Clear full-length mirror on inside of wardrobe door
- (1) Three-drawer moveable nightstand
- Rowing machine
- Entertainment center with TV, Digital DVD player, & sound system with speakers
- Shoji screens
- Opening portlights with screen & privacy cover

Guest Head / Port

- Head Hunter Royal Flush Hydro Vac toilet
- Kohler fiberglass shower with frameless tempered glass doors, Grohe thermostat &
- Hansa fixtures
- Sealed shower light
- Vanity
- Wall mirror above vanity
- Vanity lighting
- 110V AC Recessed room lighting
- Kohler Vintage sink with Jado Oriental fixtures, silver nickel/gold finish
- Jado Oriental soap dish, covered toilet paper holder, towel bar, tumbler holder & robe

Guest Stateroom / Starboard

- Convertible twin with new mattress (2013)
- 110V recessed room & reading lights
- Indirect rope accent lighting under berth and above headboard
- Clear full-length mirror on inside of wardrobe door

- (1) Three-drawer movable nightstand
- Entertainment center with TV, digital DVD player & sound system with speakers
- Shoji screens
- Opening portlights with screen & privacy cover

Guest Head / Starboard

- Head Hunter Royal Flush Hydro Vac toilet
- Kohler fiberglass shower with frameless tempered glass doors, Grohe thermostat &
- Hansa fixtures
- Sealed shower light
- Vanity
- Wall mirror above vanity
- Vanity lighting
- 110V AC Recessed room lighting
- Kohler Vintage sink with Jado Oriental fixtures, silver nickel/gold finish
- Jado Oriental soap dish, covered toilet paper holder, towel bar, tumbler holder & robe hook

Captain / Crew Quarters & Lounge

Captain's Cabin:

- Custom full-size berth
- 110V AC recessed room lights
- 12V DC reading lights
- Blinds – Duettes
- Captain's dresser
- Captain's desk
- Captain's drawers under berth
- Clear dressing mirror on wardrobe door
- Wardrobe lined with aromatic cedar, automatic light, SS closet rod & cedar shelf with keeper

Crew Cabins:

- (4) Cabins with custom twin berths

Crew Lounge:

- Washer/dryer (new 2013)
- Upholstered built-in settee
- Refrigerator/freezer
- Sharp stainless steel microwave and stainless steel sink

- Corian Sierra Aurora tops

Captain / Crew Head

- Headhunter Royal Flush Hydro Vac toilets
- Custom molded fiberglass shower with Grohe fixtures
- Sealed shower light
- Holcam standard MX series shower doors with polished chrome frame and clear glass
- Vanity
- Medicine cabinet
- Linen locker
- Kohler Bolero sink with Grohe Chiara fixtures
- Wall mirror & medicine cabinet with built-in mirror above vanity
- 110V AC Recessed room lights
- Vanity lighting
- Azrock floor
- Ginger hardware: soap dish, toilet paper holder, towel bar, tumbler holder & robe hook

Upper Deck Lounge

- Custom built-in sectional sofa
- Cocktail table
- (2) Bar stools
- (2) Club chairs with ottomans
- Bar: Built-in Whirlpool icemaker, Whirlpool refrigerator, granite top, Formica work counter with Gemini mirror-polished stainless steel sink, Jado Evergreen faucet with silver/nickel/gold finish, storage below, (1) AC outlet, rope lighting under counter edge & phone outlet

Flybridge

- Welded aluminum mast with electronics, anchor light, deck lighting and horn
- Kahlenberg air horn with ½" air strainer
- Custom Venturi windshield in stainless steel frame
- Sun pad with cushions & covers
- Pioneer AM/FM CD player with (1) pair of Speaker-Craft speakers and (1) pair of Speakercraft 6.2 speakers
- Molded-in settee with cushions, covers, (2) tables and (2) Giati 8' Teak Sunshade umbrellas with covers

Boat Deck

- Fixed awning top to cover seating area & hot tub
- Hot tub with 11kW heater
- Molded-in settee with cushions, cover & locker space under
- 40" Round Sutherland Teak cocktail table
- (2) Molded Portuguese settees with cushions & covers – forward of Pilothouse
- Stern flagstaff
- Volume control & speakers from main system
- Teak over composite deck except tender
- Chocks for life raft and (1) tender
- Nautical Structures tender lifting bridle
- Nautical Structures davit with extended, full hydraulic, telescoping boom
- (2) Wing Stations just outside Pilothouse, port & starboard, which include electronic engine controls with synchronizer engines start & stop, jog lever, bow thruster control & rudder angle indicator area, which is non-skid over composite
- Centerline 8-Man life raft

Foredeck

- Bow sun lounge includes cushions, covers & enclosed storage locker under
- Keyhole seat includes settee with cushions & covers
- Volume control & speakers from main system

Mechanical Equipment

- (2) MTU/DDC 12V4000 engines rated at 2735hp with (3) station DDEC controls & DDEC synchronizer, conventional wet exhaust 10" bypass & underwater exhaust, twin disc shallow case marine gear 2.5:1 ratio
- (2) New 65kW 1800RPM Northern Lights Generators with hydro elastic mounts & secondary Barry control mounts, sound shields, water lift mufflers, exhaust water separator & water temperature, oil pressure & hour meters installed on panel near generators, both gens have remote start/stop in Pilothouse – PTO on both generators (2013)
- ASEA System – Electrical Conversion System (50/60 Cycle Shore Power Converter)
- Alfa Laval fuel filter system
- 220V 2HP compressor with inline water separator & regulator
- 16" Wesmar bow thruster, 50hp dual prop hydraulic with three station controls (re-built 2013)
- Fuel fills port & starboard with vent pipes vented overboard for fast filling
- 100 Gallon gas tank in area of swim platform, includes air dispensing pump and hose
- Electronic monitoring system for alloy aluminum fuel tanks
- Fuel transfer pump with flow meter & timer

- Fire suppression system with manual/automatic controls
- 78 Gallon lube oil tank with deck fill & fill spigot, 33 gallon lube oil waste tank with drain spigot & portable extraction pump with quick disconnects on pump and all engines
- Naiad stabilizer system (re-built 2013)
- (3) Exalto SS Pantograph wipers with delay circuits & freshwater wash-downs
- (13) Remote mounted bilge pump system with manual/automatic switches and
- VIC alarms on all pumps except lower engine room pump
- Emergency fixed bilge pump system includes (2) electric pumps with 1 ½" lines to each major compartment with check valves, strainers & priming system
- 5-Blade Michigan custom wheel props (new 2013)
- 18' Self-Coiling air hose with quick disconnect
- 10 Sq. ft. cast urethane foil-shape rudders with 4" Aquamet 22 HS stocks
- Tides dripless packing boxes with spare seals
- Aquamet shafts
- Cast bronze foil shape Vee struts
- All thru-hulls bonded and connected to transom zincs & shaft wipers (new 2013)
- Zinc anodes installed on hull at transom & secured on SS studs & tied to the bonding system, shaft zincs included (new 2013)
- Chilled water system with air handlers in Salon, Pilothouse, Galley & all Staterooms, crew area
- & bridge deck lounge
- Jastram CCO commercial grade power steering, (3) stations – Pilothouse, & two wing stations with electric controls (all stations have rudder angle indicators)
- All new Aqua Air chillers & pumps (2013)

Electrical Systems

- Westport Proprietary VIC system displayed on 15" flat screen monitor
- (3) King heater/defrosters on Pilothouse console
- All gel cell type batteries: (2) banks of 8-D, 225 amp hour batteries, wired in series – parallel for starting the main engines, (2) 225 amp hour batteries wired in parallel for starting generator, (2) banks of 8-D, 225amp hour batteries wired in series parallel for the 24V DC ship's system power (total of 4 batteries), (2) 225 amp hour batteries wired to parallel for the 12V DC ship's system power
- (1) McCarron 75 amp/24V DC battery charger for the 24V DC ship's system, (1) McCarron 75 amp/ 12V DC battery charger for the 12V DC ship's system, (1) McCarron 24amp/24V DC battery charger for the main engine starting battery banks, (1) McCarron 20 amp/12V DC battery charger for the generator starting battery bank
- Shorepower: (1) 100amp receptacle with 100' shore cord and (1) 100amp Glendenning reel with a 100' cord in starboard bustle, TV & phone connections located at Glendenning with (1) 100' TV/phone cord
- (2) 12V DC Chart lights at navigator's area and captain's desk
- Richie Globe Masters compass in Pilothouse

- All distribution panels have engraved faceplates
- Exterior LED lighting at house sides, Foredeck, Aft Deck stairs overhead & Flybridge deck lights
- (2) 100 Amp isolation transformers on each inlet with boost capability
- Lightning protection with hull Dyna plate and mast probe
- All staterooms have 110V receptacles for table lamps, except Crew Quarters have 24V receptacles
- 110V AC Halogen recessed light fixtures
- 24V DC shower lights with white trim
- Vimar general lighting receptacles and switching throughout
- Navigation lights with operation monitored by VIC system, includes: bow light, stern light, side lights and anchor light
- Relocated battery chargers from Engine Room to Control Room (2013)

Plumbing

- Aluminum water tanks with interior epoxy coating (cleaned 2013)
- (2) Sea Recovery watermakers
- (2) Aqua-Pure water filters
- (2) 220V AC pumps & one (1) 24V DC back-up pressure pump with pressure tank for fresh water system
- (2) Holding tanks (cleaned 2013)
- Hot & cold water shower in swim platform area
- (1) 120 Gallon hot water tank with circulation pump
- Freshwater wash-down with quick disconnects on foredeck, boatdeck and swim platform
- (3) Gray water transfer boxes fitted with scree, supply & discharge lines for all showers & sinks (except main Galley)

Control Room

- Located forward of the engine room, includes: pumps, machinery, main electrical distribution, spare parts storage, desk & sound door to Engine Room
- Smoke standard profile raised circular design rubber tile floor
- Sears 12-drawer tool box with tools
- Storage cabinets
- Workbench with 4" vise

Storage / Utility / Engineer's Cabin

- Double wide stainless steel commercial refrigerator/freezer
- Bauer dive compressor with bottle & suit storage

- TV/DVD combo, AM/FM CD player, (1) pair of speakers
- Engineer's Cabin: Custom size berth, dresser, wardrobe, air conditioning & head with vanity toilet & shower, located aft of engine room

Miscellaneous Equipment

- Sunbrella Snap-On covers for: Flybridge settee, tables, seating, helm seats, shore boats, bow seat & Aft Deck seating
- Cushions for Aft Deck settee, bow sun pad, boat deck lounge settee & observation deck settee (Sunbrella fabric with dry fast foam fill)
- Besenzoni two-section hydraulic Passarelle with handrail & wireless control
- (1) 9-step Deluxe Marquipt 24" boarding stair with brackets at port & starboard gates

Tender

- 17' Novurania with 115hp Yamaha

Safety & Fire Protection

- 16-Man Zodiac life raft
- (18) Coast Guard approved adult life preservers with water lights
- (6) Coast Guard approved child life preservers
- Perko 150 ship's bell per Coast Guard regulations
- Medical kit
- (2) 4" Diameter ring buoys secured on exterior of vessel
- (3) 10lb, eight (8) 5lb, eight (8) 2.5lb fire extinguishers
- Northern Airborne Technology GPIRB
- NA-SART S.A.R.T.
- 1 1/2" Honda fire/trash pump

Remarks

"Redemption" is Hull # 8 of Westport's highly successful 130 series. The yacht has received nearly \$1M in mechanical and system updates over the last year to ensure she is in top condition and in turn-key operation that is ready to travel anywhere today.

Owner's wish to move up makes her available and an incredible opportunity!

Exclusions

All owner's personal items, wave runners, all dive gear. A detailed list of exclusions will be provided at the time of sale, upon written request.

Exclusions

Owner's personal belongings.

Disclaimer

The Company offers the details of this vessel or yacht in good faith but cannot guarantee or warrant the accuracy of this information nor warrant the condition of the vessel. A buyer should instruct his representatives, agents, or his surveyors, to investigate such details as the buyer desires validated. This vessel or yacht is offered subject to prior sale, price change, or withdrawal without notice.

PHOTOS

Aft Deck



Aft Deck



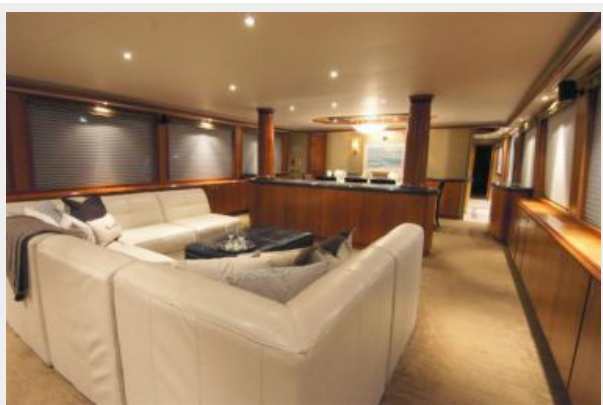
Salon



Salon



Salon



Dining



Dining



Foyer



Day Head



Galley



Galley



Galley



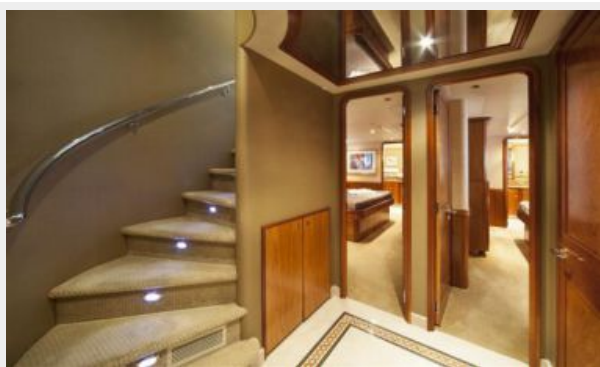
Pilothouse



Skylounge



Lower Foyer



Master Stateroom



Master Stateroom



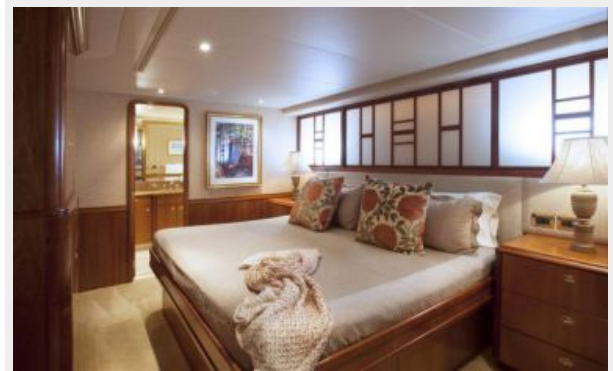
Master Head



Master Head



Guest Stateroom



Guest Stateroom



Guest Head



Guest Stateroom



Guest Stateroom



Guest Head



Guest Stateroom



Guest Stateroom



Guest Head



Guest Stateroom



Guest Stateroom



Guest Head



Bow



Sun Deck



Sun Deck



Upper Deck



Flybridge / Bar



Upper Deck



Skylounge Deck



Skylounge Deck / Jacuzzi



Jacuzzi



Walk-Around Deck



Walk-Around Deck



Engine Room



Engine Room



Engine Room



CONTACTS

Andrey Shestakov, leading yacht broker of the sales department of Shestakov Yacht Sales Inc. Shestakov Yacht Sales Inc., the official representative of the Miami/Fort Lauderdale FL headquarters.

Contact details

Email: andrey@shestakovyachtsales.com

Web: shestakovyachtsales.com/en/

Telephones

USA: +1(954)274-4435

Office hours

Monday – Saturday: **9:00 - 21:00** EDT

Sunday: **closed**

Address



Harbour Towne Marina, 850 NE 3rd St,
STE 213, Dania, FL 33004