

## REDEMPTION — WESTPORT



**Судостроитель:** WESTPORT

**Год постройки:** 2004

**Модель:** Моторная яхта

**Цена:** **ЦЕНА ЯХТЫ ПО ЗАПРОСУ**

**Местонахождение:** United States

**Длина общая:** 130' 0" (39.62m)

**Ширина:** 26' 0" (7.92m)

**Макс. осадка:** 6' 6" (1.98m)

**Крейс. скорость:** 21 Kts. (24 MPH)

**Макс. скорость:** 25 Kts. (29 MPH)

Купить **REDEMPTION — WESTPORT** а также выбрать подходящую вам яхту из нашего каталога яхт вам поможет опытный яхтенный брокер Андрей Шестаков. На сегодняшний день компания **Shestakov Yacht Sales Inc.** имеет большое количество яхт в собственном списке продаж, а также тесно сотрудничает со всеми крупными яхтенными производителями по всему миру.

Для того чтобы купить яхту **REDEMPTION — WESTPORT** а также проконсультироваться по любому вопросу связанному с покупкой, продажей, чартером яхт позвоните по телефону **+7(918)465-66-44**.

# ОГЛАВЛЕНИЕ

|                                  |    |
|----------------------------------|----|
| ОГЛАВЛЕНИЕ                       | 2  |
| ХАРАКТЕРИСТИКИ                   | 6  |
| Обзор                            | 6  |
| Основная информация              | 6  |
| Размеры                          | 6  |
| Скорость, вместимость и масса    | 6  |
| Размещение                       | 7  |
| Корпус и палуба                  | 7  |
| Информация о двигателе           | 7  |
| ПОДРОБНОЕ ОПИСАНИЕ               | 8  |
| Aft Deck                         | 8  |
| Salon                            | 8  |
| Day Head                         | 9  |
| Dining                           | 9  |
| Galley                           | 9  |
| Pilothouse                       | 9  |
| Electronics                      | 10 |
| Master Stateroom                 | 10 |
| Master Head                      | 11 |
| VIP Stateroom / Starboard        | 11 |
| VIP Head / Starboard             | 12 |
| VIP Stateroom / Port             | 12 |
| VIP Head / Port                  | 12 |
| Guest Stateroom / Port           | 13 |
| Guest Head / Port                | 13 |
| Guest Stateroom / Starboard      | 13 |
| Guest Head / Starboard           | 14 |
| Captain / Crew Quarters & Lounge | 14 |

|                                      |           |
|--------------------------------------|-----------|
| Captain / Crew Head                  | 15        |
| Upper Deck Lounge                    | 15        |
| Flybridge                            | 15        |
| Boat Deck                            | 16        |
| Foredeck                             | 16        |
| Mechanical Equipment                 | 16        |
| Electrical Systems                   | 17        |
| Plumbing                             | 18        |
| Control Room                         | 18        |
| Storage / Utility / Engineer's Cabin | 18        |
| Miscellaneous Equipment              | 19        |
| Tender                               | 19        |
| Safety & Fire Protection             | 19        |
| Remarks                              | 19        |
| Exclusions                           | 19        |
| Исключения                           | 20        |
| Отказ от ответственности             | 20        |
| <b>ФОТОГРАФИИ</b>                    | <b>21</b> |
| Aft Deck                             | 21        |
| Aft Deck                             | 21        |
| Salon                                | 21        |
| Salon                                | 21        |
| Salon                                | 21        |
| Dining                               | 21        |
| Dining                               | 22        |
| Foyer                                | 22        |
| Day Head                             | 22        |
| Galley                               | 22        |
| Galley                               | 23        |

---

|                          |    |
|--------------------------|----|
| Galley                   | 23 |
| Pilothouse               | 23 |
| Skylounge                | 23 |
| Lower Foyer              | 23 |
| Master Stateroom         | 23 |
| Master Stateroom         | 24 |
| Master Head              | 24 |
| Master Head              | 24 |
| Guest Stateroom          | 24 |
| Guest Head               | 25 |
| Guest Stateroom          | 25 |
| Guest Stateroom          | 25 |
| Guest Stateroom          | 25 |
| Guest Head               | 25 |
| Guest Stateroom          | 25 |
| Guest Stateroom          | 26 |
| Guest Head               | 26 |
| Guest Stateroom          | 26 |
| Guest Stateroom          | 26 |
| Guest Head               | 26 |
| Bow                      | 26 |
| Sun Deck                 | 27 |
| Sun Deck                 | 27 |
| Upper Deck               | 27 |
| Flybridge / Bar          | 27 |
| Upper Deck               | 27 |
| Skylounge Deck           | 27 |
| Skylounge Deck / Jacuzzi | 28 |
| Jacuzzi                  | 28 |

---

---

|                       |           |
|-----------------------|-----------|
| Walk-Around Deck      | 28        |
| Walk-Around Deck      | 28        |
| Engine Room           | 28        |
| Engine Room           | 28        |
| Engine Room           | 29        |
| <b>КОНТАКТЫ</b>       | <b>30</b> |
| Контактная информация | 30        |
| Телефоны              | 30        |
| Время работы          | 30        |
| Адрес                 | 30        |

# ХАРАКТЕРИСТИКИ

## Обзор

“*Redemption*” is hull # 8 of Westport’s highly successful 130 series. The yacht has received nearly \$1M in mechanical and system updates over the last year to ensure she is in top condition and a turn-key operation that is ready to travel anywhere today. “*Redemption*” is currently out of the water at LMC in Fort Lauderdale undergoing various updates for the fall season.

Owner’s wish to move up makes her available and an incredible opportunity!

## Основная информация

Тип судна: Моторная яхта

Модельный год: 2004

Год постройки: 2004

Страна: United States

Верх: Hardtop

Открытая палуба мостика: Да

## Размеры

Длина общая: 130' 0" (39.62m)

Ширина: 26' 0" (7.92m)

Макс. осадка: 6' 6" (1.98m)

## Скорость, вместимость и масса

Крейс. скорость: 21 Kts. (24 MPH)

Макс. скорость: 25 Kts. (29 MPH)

Водоизмещение: 370000 Pounds

Вместимость воды: 1620 Gallons

Вместимость сточного бака: 1360 Gallons

Объем топливного бака: 9900 Gallons

## Размещение

---

Всего кают: 5

Спальные места: 8

Всего ком. состава: 7

Каюта капитана: Да

Каюты экипажа: 4

## Корпус и палуба

---

Материал корпуса: Fiberglass

Материал палубы: Teak

Комплектация корпуса: Modified V-Hull

Дизайнер корпуса: William Garden

Дизайнер экстерьера: Greg Marshall

Дизайнер интерьера: Westport

## Информация о двигателе

---

Двигатели: 2

Производитель: MTU

Модель: 12V4000

Тип двигателя: Inboard

Тип топлива: Diesel

---

## ПОДРОБНОЕ ОПИСАНИЕ

---

### Aft Deck

---

Aft Deck bar with TV, phone jacks, Whirlpool refrigerator, Whirlpool icemaker, Corian Magna Savannah top, sink with hot & cold water, storage.

- Spiral staircase up to boat deck and down to control room with stainless steel handrail
- Control room stairs, vinyl covered teak treads up to boat deck
- Hitachi 37" Plasma display TV
- Stereo Volume control & speakers from main system
- Mitsubishi VCR
- Sony DVD player
- Larger capstan installed on Aft Deck to replace capstans on swim platform
- Larger cleats on Aft Deck
- Removed lower capstan
- Molded-in Settee with cushions
- (1) Teak bench with cushions
- (2) Teak serving trays
- 72" Round Westcoast Teak dining table with fixed SS pedestal by Crown, LTD & eight
- (8) Teak dining chairs with cushions
- (3) Teak bar stools with cushions
- (2) Teak lounge chairs with cushions
- (1) Teak side table

### Salon

---

- Sofa
- Cocktail table
- End tables
- Occasional chairs
- Game table with four chairs
- Blinds
- Stainless steel framed glass sliding door
- Large entry in foyer starboard side with A-Look mirrored overhead treatment
- Marble on starboard companionway floor
- Apple TV video system
- Storage for CDs, videotapes & DVDs
- 50" Samsung LED TV on electric lift with remote
- Dining table with ten chairs
- Vinyl headliner with vaulted ceiling over dining area
- Wine cooler in custom cherry cabinet



- Volume control & speakers from main stereo system in Dining area

## Day Head

---

- Headhunter Royal Flush Hydro Vac Toilet
- Mirrored overhead
- Marble vanity top
- Marble flooring
- Black Kohler Caxton under-mount sink
- THG Elegance faucet with polished gold finish & Onyx accent color
- Coordinating bath accessories by THG include: soap dish, covered toilet paper holder & towel ring

## Dining

---

- Dining table with ten chairs
- Vinyl headliner with vaulted ceiling over dining area
- Wine cooler in custom cherry cabinet
- Volume control & speakers from main stereo system in dining area

## Galley

---

- Kohler stainless steel sink
- Grohe faucet
- Corian Table and countertops
- Built-in Majilite fabric dinette settee
- Miele 48" refrigerator
- Miele cooktop and oven
- Insinkerator garbage disposal
- Broan trash compactor
- Starbuck's Saeco Espresso machine
- 20" LCD TV
- Speakers from main system with volume control
- Azrock commercial vinyl flooring
- Bosch dishwasher
- Kohler stainless steel sink
- Chrome Insta-Hot hot water dispenser
- Stainless steel overhead vent

## Pilothouse

---

- V-SAT Omni access system
- 24" Stainless steel Destroyer helm station wheel with Jastram power steering
- Desk with laptop PC storage
- AM/FM CD Player with VCR and speakers
- Leather covered dash panels
- Chart drawer
- Leather settee
- Madrona Burl veneer with solid Cherry edge settee table
- Crown Classic leather helm chair
- Stain-resistant carpeting

## Electronics

---

- Panasonic station telephone system with programmable phones, speakerphones,
- (17) Jack locations, Midship shore inlet with 100' combo CATV/telephone shore cord
- KVH TracPhone 252 satellite telephone with phone switch
- Seatel Satellite TV system with MS-8
- Tellular digital cellular black box single mode phone
- Loud hailer integrated with VHF (Does not work)
- B&G Hydra 2000 wind, depth and speed system with full function display on dash and in crew lounge, includes wind and compass options
- Elbex hi-resolution color pan/tilt/zoom cameras located forward of main entrance on the starboard side of main deck, port quarter of main deck and Engine Room
- Furuno NX-500 Navtex with NX-5
- Northern Airborne Technology NA-S1510 GPIRB
- NA-SART: S.A.R.T.
- Furuno Felcom Inmarsat C-12 standard "C" with roll printer
- (2) Furuno 2115 BB radars with 20" LCD flat screen monitors (both with ARPA)
- Furuno FCV-1200L video depth sounder (black box) with 15" LCD flat screen monitor
- Northstar 041XD GPS in Pilothouse
- 20" Nobeltec LDC flat screen monitor
- (2) Icom M-127 radios in Pilothouse, one (1) each ICOM M-127 in crew lounge & galley
- (2) Handheld VHF standard HX-255S with desktop chargers
- Icom M710-RT22 SSB with tuner
- Robertson AP20 autopilot system
- Westport proprietary vessel information and control system (VIC)
- Furuno Weatherfax 210 with fax 5
- V-Sat system – New in 2009 for internet 24/7

## Master Stateroom

---

- Tempur-Pedic King mattress with two-drawer storage below

- Custom recessed room lights
- (2) 110V reading lights
- Indirect rope accent lighting under berth & above soffit
- Special lighting over berth
- (1) Table lamp
- Blinds with fixed Roman shade valances
- (2) Nightstands with drawers
- (2) Dressers
- Entertainment center with TV, VCR, 5-disc DVD changer & surround sound system and speakers
- Bronze A-look mirrors on bulkhead above headboard
- Clear full-length mirror on inside wardrobe door
- Walk-in wardrobe lined with aromatic cedar with light, stainless steel closet rod and cedar shelf with keeper
- Solid cherry framed doors with Madrona Burl Veneer panels
- Digital wall safe in walk-in closet
- End table with lamp at settee
- Built-in desk with chair
- Custom settee on starboard side
- Madrona Burl veneer counters with solid cherry edge

---

## Master Head

---

- Headhunter Royal Flush Hydro Vac toilet
- Whirlpool bath/shower with Grohe thermostat & Hansa fixtures, Jado Oriental tub handles, silver nickel/gold finish
- (2) Kohler Vintage sinks with Jado Oriental fixtures, silver nickel/gold finish
- Wall hung mirror above sinks
- Vanities port & starboard, make-up vanity with stool & lights on port side
- Linen storage port & starboard
- Low voltage recessed room lights
- Vanity lights
- (2) Sconce lights at tub
- Lighted make-up mirror on port vanity
- Marble tile floor
- (2) Jado Oriental soap dish, covered toilet paper holder, 18" towel bar, tumbler holder and robe hook
- Volume control & speakers from main system

---

## VIP Stateroom / Starboard

---

- King berth with Tempur-Pedic mattress, upholstered headboard and two-drawer storage

below

- Clear full-length mirror on inside wardrobe door
- Wardrobe lined with aromatic cedar shelf with keeper
- (2) Three-drawer nightstands
- Entertainment center with TV, DVD, sound system with speakers
- 100V AC recessed room lighting
- Indirect rope accent lighting under berth and above soffit
- Shoji screens
- Opening portlights with screens

## VIP Head / Starboard

---

- Headhunter Royal Flush Hydro Vac Toilet
- Frameless tempered glass doors on shower and Grohe thermostat & Hansa fixtures
- Sealed shower light
- Jado Oriental bath accessories: Soap dish, covered toilet paper holder, towel bar, tumbler holder & robe hook
- Kohler Vintage sinks with Jado Oriental fixtures with silver nickel/gold finish
- Vanity
- Wall mirror above vanity
- 110V AC recessed room lights
- Vanity lighting
- Marble counters & floor

## VIP Stateroom / Port

---

- King berth with Tempur-Pedic mattress, upholstered headboard and two-drawer storage below
- Clear full-length mirror on inside wardrobe door
- Wardrobe lined with aromatic cedar shelf with keeper
- (2) Three-drawer nightstands
- Shoji s screens
- Entertainment center with TV, DVD, sound system with speakers
- 100V AC recessed room lighting
- Indirect rope accent lighting under berth and above soffit
- Opening portlights with screens

## VIP Head / Port

---

- Headhunter Royal Flush Hydro Vac Toilet
- Frameless tempered glass doors on shower and Grohe thermostat & Hansa fixtures
- Sealed shower light

- Jado Oriental bath accessories: one each: soap dish, covered toilet paper holder, towel bar, tumbler holder & robe hook
- Kohler Vintage sinks with Jado Oriental fixtures with silver nickel/gold finish
- Vanity
- Wall mirror above vanity
- 110V AC recessed room lights
- Vanity lighting
- Marble counters & floor

---

## Guest Stateroom / Port

---

- Convertible twins with new mattress (2013)
- 110V Recessed room & reading lights
- Indirect rope accent lighting under berth and above soffit
- Bronze A-look mirrors on bulkhead above headboard
- Clear full-length mirror on inside of wardrobe door
- (1) Three-drawer moveable nightstand
- Rowing machine
- Entertainment center with TV, Digital DVD player, & sound system with speakers
- Shoji screens
- Opening portlights with screen & privacy cover

---

## Guest Head / Port

---

- Head Hunter Royal Flush Hydro Vac toilet
- Kohler fiberglass shower with frameless tempered glass doors, Grohe thermostat &
- Hansa fixtures
- Sealed shower light
- Vanity
- Wall mirror above vanity
- Vanity lighting
- 110V AC Recessed room lighting
- Kohler Vintage sink with Jado Oriental fixtures, silver nickel/gold finish
- Jado Oriental soap dish, covered toilet paper holder, towel bar, tumbler holder & robe

---

## Guest Stateroom / Starboard

---

- Convertible twin with new mattress (2013)
- 110V recessed room & reading lights
- Indirect rope accent lighting under berth and above headboard
- Clear full-length mirror on inside of wardrobe door

- (1) Three-drawer movable nightstand
- Entertainment center with TV, digital DVD player & sound system with speakers
- Shoji screens
- Opening portlights with screen & privacy cover

## Guest Head / Starboard

---

- Head Hunter Royal Flush Hydro Vac toilet
- Kohler fiberglass shower with frameless tempered glass doors, Grohe thermostat &
- Hansa fixtures
- Sealed shower light
- Vanity
- Wall mirror above vanity
- Vanity lighting
- 110V AC Recessed room lighting
- Kohler Vintage sink with Jado Oriental fixtures, silver nickel/gold finish
- Jado Oriental soap dish, covered toilet paper holder, towel bar, tumbler holder & robe hook

## Captain / Crew Quarters & Lounge

---

### Captain's Cabin:

- Custom full-size berth
- 110V AC recessed room lights
- 12V DC reading lights
- Blinds – Duettes
- Captain's dresser
- Captain's desk
- Captain's drawers under berth
- Clear dressing mirror on wardrobe door
- Wardrobe lined with aromatic cedar, automatic light, SS closet rod & cedar shelf with keeper

### Crew Cabins:

- (4) Cabins with custom twin berths

### Crew Lounge:

- Washer/dryer (new 2013)
- Upholstered built-in settee
- Refrigerator/freezer
- Sharp stainless steel microwave and stainless steel sink

- Corian Sierra Aurora tops

---

## Captain / Crew Head

---

- Headhunter Royal Flush Hydro Vac toilets
- Custom molded fiberglass shower with Grohe fixtures
- Sealed shower light
- Holcam standard MX series shower doors with polished chrome frame and clear glass
- Vanity
- Medicine cabinet
- Linen locker
- Kohler Bolero sink with Grohe Chiara fixtures
- Wall mirror & medicine cabinet with built-in mirror above vanity
- 110V AC Recessed room lights
- Vanity lighting
- Azrock floor
- Ginger hardware: soap dish, toilet paper holder, towel bar, tumbler holder & robe hook

---

## Upper Deck Lounge

---

- Custom built-in sectional sofa
- Cocktail table
- (2) Bar stools
- (2) Club chairs with ottomans
- Bar: Built-in Whirlpool icemaker, Whirlpool refrigerator, granite top, Formica work counter with Gemini mirror-polished stainless steel sink, Jado Evergreen faucet with silver/nickel/gold finish, storage below, (1) AC outlet, rope lighting under counter edge & phone outlet

---

## Flybridge

---

- Welded aluminum mast with electronics, anchor light, deck lighting and horn
- Kahlenberg air horn with 1/2" air strainer
- Custom Venturi windshield in stainless steel frame
- Sun pad with cushions & covers
- Pioneer AM/FM CD player with (1) pair of Speaker-Craft speakers and (1) pair of Speakercraft 6.2 speakers
- Molded-in settee with cushions, covers, (2) tables and (2) Giati 8' Teak Sunshade umbrellas with covers

---

## Boat Deck

---

- Fixed awning top to cover seating area & hot tub
- Hot tub with 11kW heater
- Molded-in settee with cushions, cover & locker space under
- 40" Round Sutherland Teak cocktail table
- (2) Molded Portuguese settees with cushions & covers – forward of Pilothouse
- Stern flagstaff
- Volume control & speakers from main system
- Teak over composite deck except tender
- Chocks for life raft and (1) tender
- Nautical Structures tender lifting bridle
- Nautical Structures davit with extended, full hydraulic, telescoping boom
- (2) Wing Stations just outside Pilothouse, port & starboard, which include electronic engine controls with synchronizer engines start & stop, jog lever, bow thruster control & rudder angle indicator area, which is non-skid over composite
- Centerline 8-Man life raft

---

## Foredeck

---

- Bow sun lounge includes cushions, covers & enclosed storage locker under
- Keyhole seat includes settee with cushions & covers
- Volume control & speakers from main system

---

## Mechanical Equipment

---

- (2) MTU/DDC 12V4000 engines rated at 2735hp with (3) station DDEC controls & DDEC synchronizer, conventional wet exhaust 10" bypass & underwater exhaust, twin disc shallow case marine gear 2.5:1 ratio
- (2) New 65kW 1800RPM Northern Lights Generators with hydro elastic mounts & secondary Barry control mounts, sound shields, water lift mufflers, exhaust water separator & water temperature, oil pressure & hour meters installed on panel near generators, both gens have remote start/stop in Pilothouse – PTO on both generators (2013)
- ASEA System – Electrical Conversion System (50/60 Cycle Shore Power Converter)
- Alfa Laval fuel filter system
- 220V 2HP compressor with inline water separator & regulator
- 16" Wesmar bow thruster, 50hp dual prop hydraulic with three station controls (re-built 2013)
- Fuel fills port & starboard with vent pipes vented overboard for fast filling
- 100 Gallon gas tank in area of swim platform, includes air dispensing pump and hose
- Electronic monitoring system for alloy aluminum fuel tanks
- Fuel transfer pump with flow meter & timer



- Fire suppression system with manual/automatic controls
- 78 Gallon lube oil tank with deck fill & fill spigot, 33 gallon lube oil waste tank with drain spigot & portable extraction pump with quick disconnects on pump and all engines
- Naiad stabilizer system (re-built 2013)
- (3) Exalto SS Pantograph wipers with delay circuits & freshwater wash-downs
- (13) Remote mounted bilge pump system with manual/automatic switches and
- VIC alarms on all pumps except lower engine room pump
- Emergency fixed bilge pump system includes (2) electric pumps with 1 ½" lines to each major compartment with check valves, strainers & priming system
- 5-Blade Michigan custom wheel props (new 2013)
- 18' Self-Coiling air hose with quick disconnect
- 10 Sq. ft. cast urethane foil-shape rudders with 4" Aquamet 22 HS stocks
- Tides dripless packing boxes with spare seals
- Aquamet shafts
- Cast bronze foil shape Vee struts
- All thru-hulls bonded and connected to transom zincs & shaft wipers (new 2013)
- Zinc anodes installed on hull at transom & secured on SS studs & tied to the bonding system, shaft zincs included (new 2013)
- Chilled water system with air handlers in Salon, Pilothouse, Galley & all Staterooms, crew area
- & bridge deck lounge
- Jastram CCO commercial grade power steering, (3) stations – Pilothouse, & two wing stations with electric controls (all stations have rudder angle indicators)
- All new Aqua Air chillers & pumps (2013)

## Electrical Systems

---

- Westport Proprietary VIC system displayed on 15" flat screen monitor
- (3) King heater/defrosters on Pilothouse console
- All gel cell type batteries: (2) banks of 8-D, 225 amp hour batteries, wired in series – parallel for starting the main engines, (2) 225 amp hour batteries wired in parallel for starting generator, (2) banks of 8-D, 225amp hour batteries wired in series parallel for the 24V DC ship's system power (total of 4 batteries), (2) 225 amp hour batteries wired to parallel for the 12V DC ship's system power
- (1) McCarron 75 amp/24V DC battery charger for the 24V DC ship's system, (1) McCarron 75 amp/ 12V DC battery charger for the 12V DC ship's system, (1) McCarron 24amp/24V DC battery charger for the main engine starting battery banks, (1) McCarron 20 amp/12V DC battery charger for the generator starting battery bank
- Shorepower: (1) 100amp receptacle with 100' shore cord and (1) 100amp Glendenning reel with a 100' cord in starboard bustle, TV & phone connections located at Glendenning with (1) 100' TV/phone cord
- (2) 12V DC Chart lights at navigator's area and captain's desk
- Richie Globe Masters compass in Pilothouse

- All distribution panels have engraved faceplates
- Exterior LED lighting at house sides, Foredeck, Aft Deck stairs overhead & Flybridge deck lights
- (2) 100 Amp isolation transformers on each inlet with boost capability
- Lightning protection with hull Dyna plate and mast probe
- All staterooms have 110V receptacles for table lamps, except Crew Quarters have 24V receptacles
- 110V AC Halogen recessed light fixtures
- 24V DC shower lights with white trim
- Vimar general lighting receptacles and switching throughout
- Navigation lights with operation monitored by VIC system, includes: bow light, stern light, side lights and anchor light
- Relocated battery chargers from Engine Room to Control Room (2013)

---

## Plumbing

---

- Aluminum water tanks with interior epoxy coating (cleaned 2013)
- (2) Sea Recovery watermakers
- (2) Aqua-Pure water filters
- (2) 220V AC pumps & one (1) 24V DC back-up pressure pump with pressure tank for fresh water system
- (2) Holding tanks (cleaned 2013)
- Hot & cold water shower in swim platform area
- (1) 120 Gallon hot water tank with circulation pump
- Freshwater wash-down with quick disconnects on foredeck, boatdeck and swim platform
- (3) Gray water transfer boxes fitted with scree, supply & discharge lines for all showers & sinks (except main Galley)

---

## Control Room

---

- Located forward of the engine room, includes: pumps, machinery, main electrical distribution, spare parts storage, desk & sound door to Engine Room
- Smoke standard profile raised circular design rubber tile floor
- Sears 12-drawer tool box with tools
- Storage cabinets
- Workbench with 4" vise

---

## Storage / Utility / Engineer's Cabin

---

- Double wide stainless steel commercial refrigerator/freezer
- Bauer dive compressor with bottle & suit storage

- TV/DVD combo, AM/FM CD player, (1) pair of speakers
- Engineer's Cabin: Custom size berth, dresser, wardrobe, air conditioning & head with vanity toilet & shower, located aft of engine room

---

## Miscellaneous Equipment

---

- Sunbrella Snap-On covers for: Flybridge settee, tables, seating, helm seats, shore boats, bow seat & Aft Deck seating
- Cushions for Aft Deck settee, bow sun pad, boat deck lounge settee & observation deck settee (Sunbrella fabric with dry fast foam fill)
- Besenzoni two-section hydraulic Passarelle with handrail & wireless control
- (1) 9-step Deluxe Marquipt 24" boarding stair with brackets at port & starboard gates

---

## Tender

---

- 17' Novurania with 115hp Yamaha

---

## Safety & Fire Protection

---

- 16-Man Zodiac life raft
- (18) Coast Guard approved adult life preservers with water lights
- (6) Coast Guard approved child life preservers
- Perko 150 ship's bell per Coast Guard regulations
- Medical kit
- (2) 4" Diameter ring buoys secured on exterior of vessel
- (3) 10lb, eight (8) 5lb, eight (8) 2.5lb fire extinguishers
- Northern Airborne Technology GPIRB
- NA-SART S.A.R.T.
- 1 1/2" Honda fire/trash pump

---

## Remarks

---

***“Redemption”*** is Hull # 8 of Westport's highly successful 130 series. The yacht has received nearly \$1M in mechanical and system updates over the last year to ensure she is in top condition and in turn-key operation that is ready to travel anywhere today.

Owner's wish to move up makes her available and an incredible opportunity!

---

## Exclusions

---

All owner's personal items, wave runners, all dive gear. A detailed list of exclusions will be provided at the time of sale, upon written request.

## **Исключения**

---

При продаже яхты исключаются личные вещи владельца.

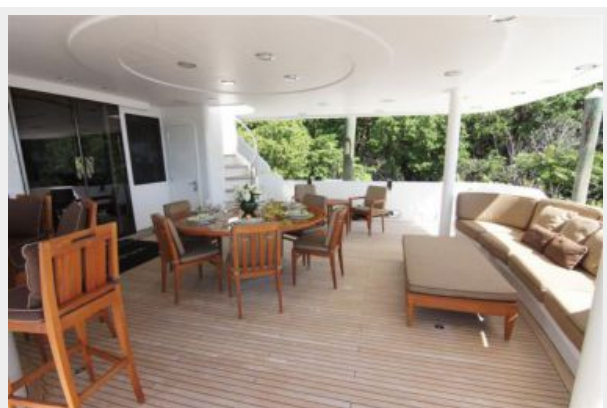
## **Отказ от ответственности**

---

Компания предоставляет описание судна или яхты добросовестно, но не может гарантировать точность этой информации, а также не ручается за техническое состояние. Покупатель должен проинструктировать своих агентов или оценщиков исследовать представленную информацию более подробно, по собственному желанию. Продажа судна или яхты, изменение цены или снятие с продажи будет происходить без предварительного уведомления.

# ФОТОГРАФИИ

**Aft Deck**



**Aft Deck**



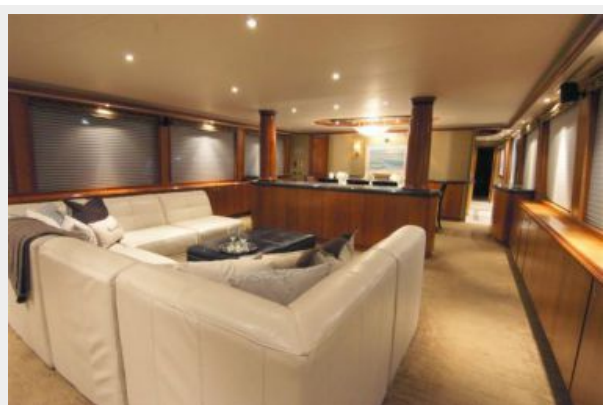
**Salon**



**Salon**



**Salon**



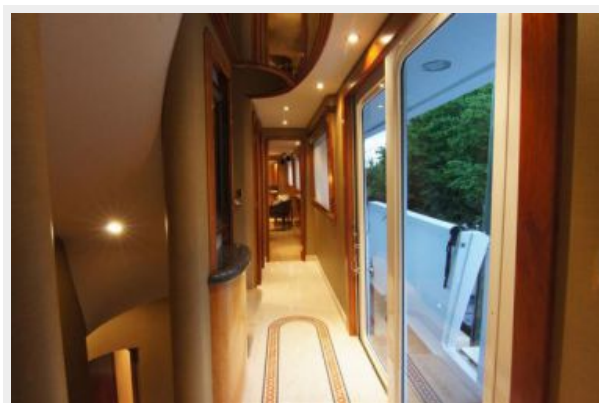
**Dining**



**Dining**



**Foyer**



**Day Head**



**Galley**



**Galley**



**Galley**



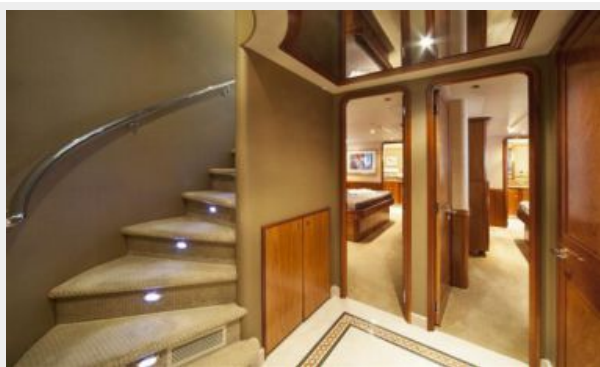
**Pilothouse**



**Skylounge**



**Lower Foyer**



**Master Stateroom**



**Master Stateroom**



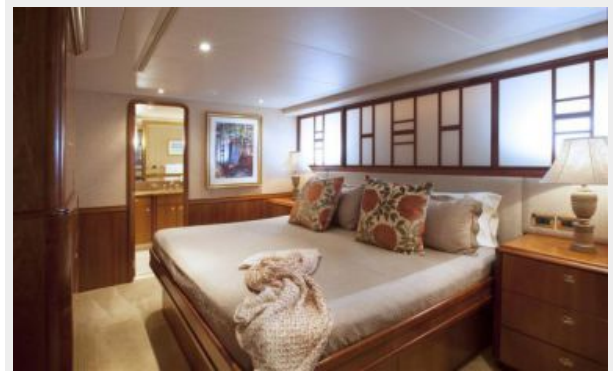
**Master Head**



**Master Head**



**Guest Stateroom**





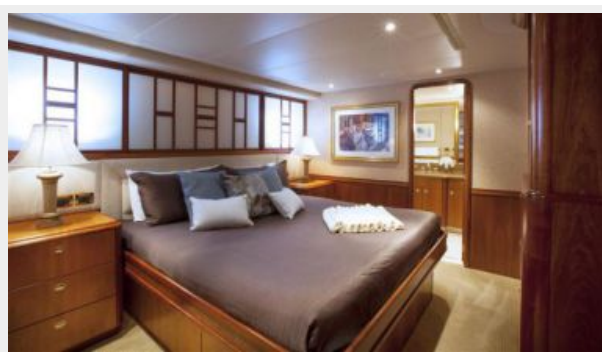
**Guest Stateroom**



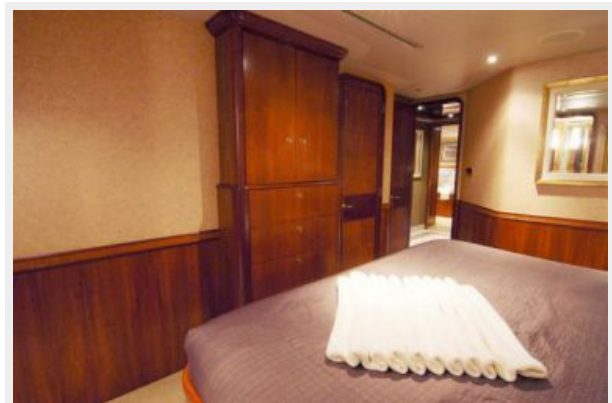
**Guest Head**



**Guest Stateroom**



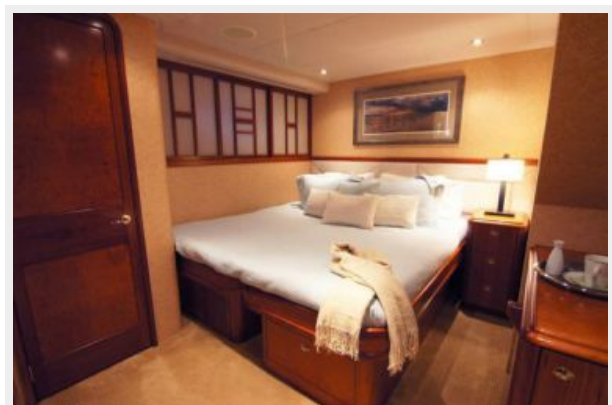
**Guest Stateroom**



**Guest Head**



**Guest Stateroom**



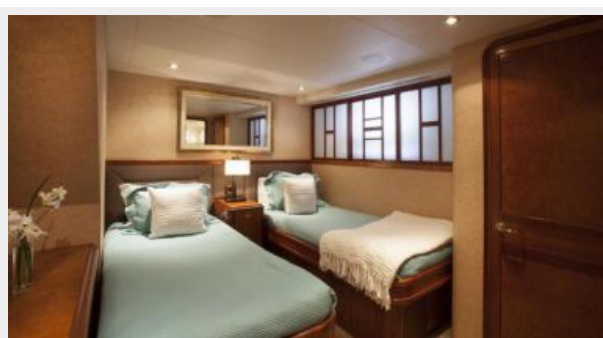
**Guest Stateroom**



**Guest Head**



**Guest Stateroom**



**Guest Stateroom**



**Guest Head**



**Bow**



**Sun Deck**



**Sun Deck**



**Upper Deck**



**Flybridge / Bar**



**Upper Deck**



**Skylounge Deck**



**Skylounge Deck / Jacuzzi**



**Jacuzzi**



**Walk-Around Deck**



**Walk-Around Deck**



**Engine Room**



**Engine Room**



## Engine Room



# КОНТАКТЫ

---

Андрей Шестаков (Andrey Shestakov) – ведущий яхтенный брокер отдела продаж яхт и судов компании Shestakov Yacht Sales Inc. Официальный представитель Shestakov Yacht Sales Inc. для русскоговорящих клиентов в центральном офисе компании в Майами/Форт Лодердейл/Флорида/США.

## Контактная информация

---

Email: [andrey@shestakovyachtsales.com](mailto:andrey@shestakovyachtsales.com)

Web: [shestakovyachtsales.com](http://shestakovyachtsales.com)

## Телефоны

---

Краснодарский край: **+7(918)465-66-44**

США, Майами, Флорида: **+1(954)274-4435**

## Время работы

---

Понедельник – Суббота: **9:00 - 21:00**  
EDT

Воскресенье: **Закрыто**

## Адрес

---



Harbour Towne Marina, 850 NE 3rd St,  
STE 213, Dania, FL 33004