

OASIS — OCEAN ALEXANDER



Builder: OCEAN ALEXANDER

Year Built: 1992

Model: Motor Yacht

Price: PRICE ON APPLICATION

Location: United States

LOA: 42' 0" (12.80m)

Beam: 14' 4" (4.37m)

Cruise Speed: 17 Kts. (20 MPH)

Our experienced yacht broker, Andrey Shestakov, will help you choose and buy a yacht that best suits your needs **Oasis — OCEAN ALEXANDER** from our catalogue. Presently, at Shestakov Yacht Sales Inc., we have a wide variety of yachts available on our sale's list. We also work in close contact with all the big yacht manufacturers from all over the world.

If you would like to buy a yacht **Oasis — OCEAN ALEXANDER** or would like help answering any questions concerning purchasing, selling or chartering a yacht, please call **+1(954)274-4435**

TABLE OF CONTENTS

TABLE OF CONTENTS	2
SPECIFICATIONS	3
Overview	3
Basic Information	3
Dimensions	3
Speed, Capacities and Weight	3
Accommodations	3
Hull and Deck Information	3
Engine Information	4
DETAILED INFORMATION	5
Accommodations	5
Salon	5
Galley	5
Electronics	6
Electrical	6
Deck & Hull and mechanical	6
Improvements to vessel	7
Exclusions	8
Disclaimer	8
PHOTOS	9
CONTACTS	19
Contact details	19
Telephones	19
Office hours	19
Address	19

SPECIFICATIONS

Overview

Here is a very popular and gorgeous 42' Ocean Alexander Sedan. The very nice and practical two stateroom layout is designed by Ed Monk Jr. and equipped with the desirable twin 300hp Cummins B series 6bta's that have less than 1,550 original hours! \$70,000 in improvements have been invested by the current owners in the last few years alone.

Basic Information

Category: Motor Yacht

Model Year: 1992

Year Built: 1992

Country: United States

Dimensions

LOA: 42' 0" (12.80m)

Beam: 14' 4" (4.37m)

Speed, Capacities and Weight

Cruise Speed: 17 Kts. (20 MPH)

Water Capacity: 150 Gallons

Holding Tank: 40 Gallons

Fuel Capacity: 500 Gallons

Accommodations

Total Cabins: 2

Hull and Deck Information

Hull Material: Fiberglass

Engine Information

Engines: 2

Manufacturer: Cummins

Model: 6bta 5.9L

Fuel Type: Diesel

DETAILED INFORMATION

Accommodations

Here is a very popular and gorgeous 42' Ocean Alexander Sedan. Nice practical two stateroom layout designed by Ed Monk Jr. She is equipped with the desirable twin 300hp Cummins B series 6bta's that have less than 1,600 original hours! Forward is the Master Stateroom Cabin with pedestal style berth and ample storage below. There are decorator pillows, shams, drapes and bed covers. Aft and to port is a large hanging locker, to starboard and aft, a built-in cabinet with pullout drawer style storage. In terms of ventilation vessel has 8 opening ports that help on nice warm sunny days. The guest cabin is located aft and is to port. This cabin features twin berths, a mirrored bulkhead and a large built-in cabinet with lots of storage. There is also a full height hanging locker on the forward bulkhead. Across the companionway to the starboard side is the head which is shared by both cabins. The head is decorated with designer wall coverings and has tasteful formica counter tops. The vanity is mirrored, the toilet is a Sealand vacuflush unit with holding tank, macerator and Y valve. The stall shower is located aft of the vanity and is vented for heating, a nice touch for drying towels after showering. Up three steps from the lower level is the main deck where you will find the lower helm (to starboard) a U shaped galley (to port) and the salon which is aft. Double sliding doors lead to the cockpit.

Salon

- Built-in Norcold low-profile refrigerator in custom cabinet
- U-line ice maker
- Wired for Sirius Sat radio
- Bar Stools
- Large sliding doors
- New carpet and "Sound Down" acoustical underlayment
- Wired for internet
- Custom Flexsteel Sofa with recliners at each end
- Glass high low table

Galley

- Norcold low profile refrigerator
- Drop-in counter top storage
- Kenyon 3 burner electric cooktop
- New Avonite custom counter tops
- Custom storage for dishes, pots and pans
- Large size double sink with storage below
- GE microwave convection oven
- Overhead dishlocker

- Coffee maker

Electronics

- MicroMathers Electronic Controls
- (2) KVH Azimuth 1000 flux-gate compasses
- (2) Motorola Triton 11 VHF Radios
- Dual Station Furuno NAVNET 1900C radar with ARP 11 target tracking
- Dual station Furuno NAVNET 1833 chartplotter with C- map radar overlay
- Simrad autopilot w/remote
- Furuno RD 30 Multi station repeater
- Dual station Datamarine Dart systems
- Standard Horizon Hailer: Fog/Anchor
- Furuno FCV 665 Video Sounder
- Aiphone dual station intercom

Electrical

- 30 amp 120 volt AC shore power system with (2) 50' 30 amp cords and adapters
- Westerbeke 8KW generator (250 hours)
- Engine start batteries Northstar Meridian AGM 130ah(2)
- House Batteries Northstar Meridian AGM 210 ah (4)
- Engine electronic control battery group 24 (1)
- Generator start battery (1) group 24
- Outback 2800 M Inverter
- Victron Phoenix 4 stage solid state
- battery charger with remote
- AC DC panel at lower helm with ammeter, voltmeter and reverse polarity indicator
- (21) branch circuits, shore power inlet aft
- 12 V DC system w/36 branch circuits
- Guest Smart battery switch (3 positions)
- (2) Delco Remy 100 amp alternators
- Cadet electric heaters for salon and cabins
- Swivel overhead halogen lighting

Deck & Hull and mechanical

Fortunately this vessel is equipped with the Cummins 5.9L 6Bta's which are rated at 300hp. They are in line six cylinder engine which provides for a great horse power to weight ratio. Additionally the benefit is a much more room in the engine compartment for self maintenance. Also of note the salon on this particular 42 Ocean Alexander measures approximately 14'6" long. The cockpit

measures approximately 7' in length.

- Hull painted w/Awlgrip
- (2) 28 x30 bronze 4 blade props
- Bronze V-struts
- 2" S/S shafts
- Bronze stuffing boxes
- Bennett trim tabs
- MMC electronic engine controls
- Engine room Halon
- (3) Rule 2000 bilge pumps
- Hynautic hydraulic steering
- Engine room blower
- Aluminum fuel tanks w/sight gauges
- Engine block heaters
- 4-zone t-stat controlled diesel hot water furnace
- 20kg Bruce anchor
- 250' 5/16's chain rode
- Anchor washdown
- 12' Caribe tender with 20hp Honda
- Roskelly/Olsen aluminum electric davit
- Maxwell 800 12 VDC windlass w/power up and down function.
- New upholstery cover bridge seats
- Magma SS BBQ
- "Everhot" domestic hot water system
- Integrated domestic water filtration

Improvements to vessel

While there maybe less expensive 42 Ocean Alexanders out there this particular one has had some recent options and upgrades:

- New bottom paint & Zincs Canoe Cove 2009
- Removed side salon windows and rebed Canoe Cove 2009
- Remove hand rails and rebed Canoe Cove 2009
- All new sanitation lines holding tank Canoe Cove 2009
- Hull painted w/Awlgrip
- Furuno Nav Net & Simrad Autopilot
- Hydronic 2010 Webasto Diesel furnace w/Everhot system
- AGM Batteries
- Outback Inverter system
- Caribe inflatable w/Honda 20hp ob
- Salon Carpet w/Sound Down Material
- Custom Flexsteel Ultra Leather salon settee

-
- Salon Chair
 - Galley custom stone counter tops
 - Grohe faucet & sink fixture galley
 - Custom drapes
 - Custom bedding

Exclusions

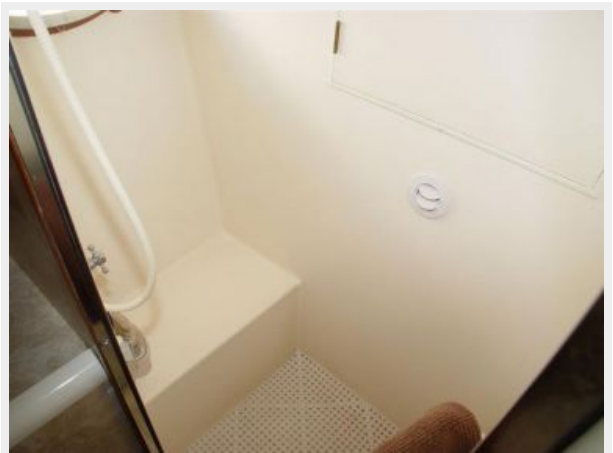
Owner's personal belongings.

Disclaimer

The Company offers the details of this vessel or yacht in good faith but cannot guarantee or warrant the accuracy of this information nor warrant the condition of the vessel. A buyer should instruct his representatives, agents, or his surveyors, to investigate such details as the buyer desires validated. This vessel or yacht is offered subject to prior sale, price change, or withdrawal without notice.

PHOTOS

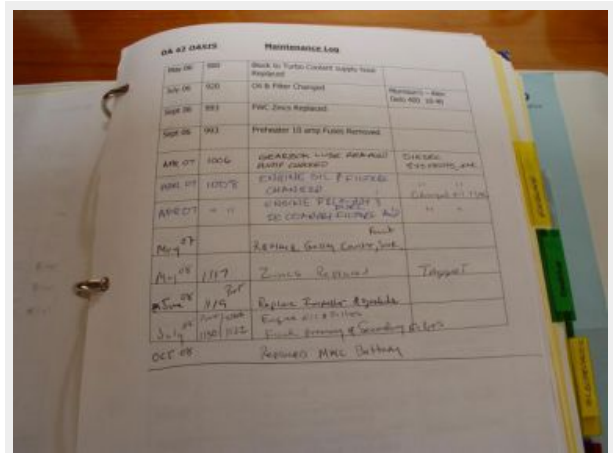
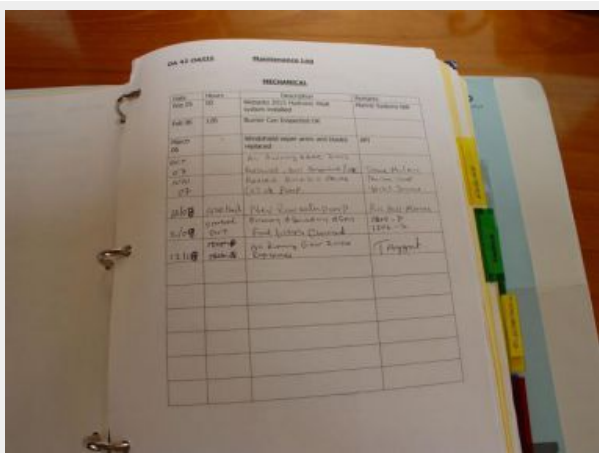
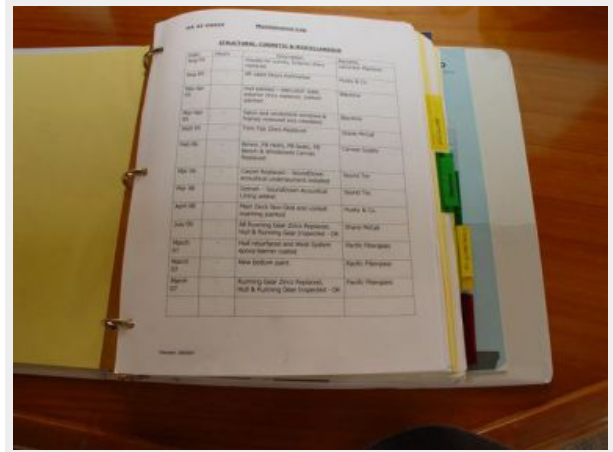


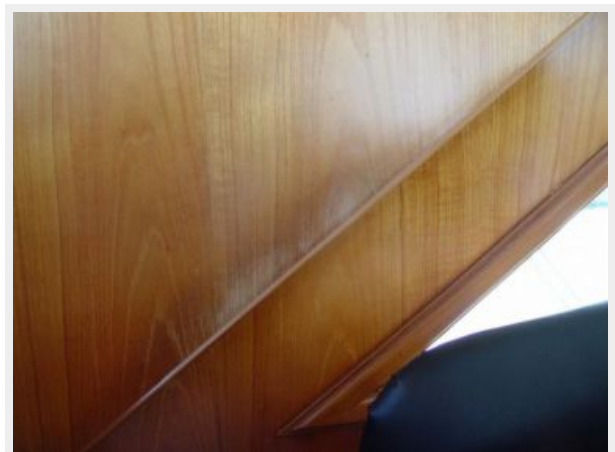
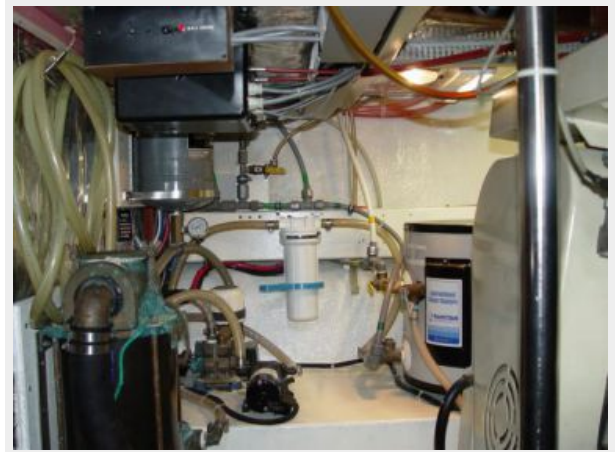


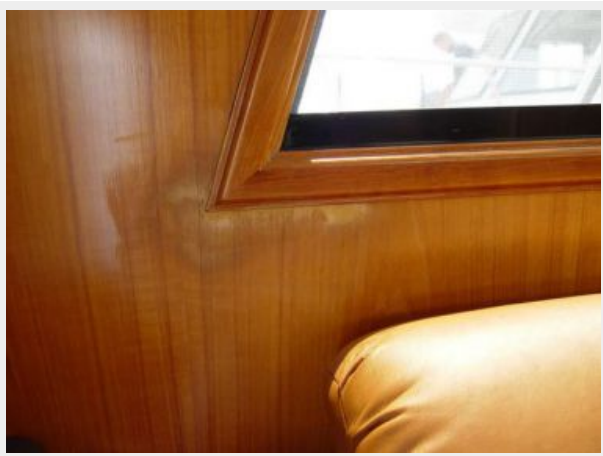
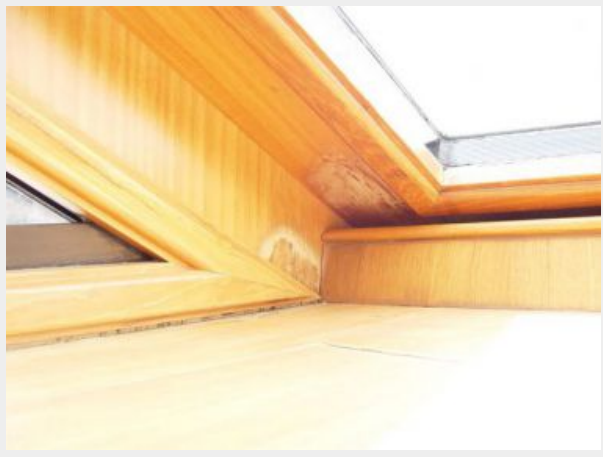
















CONTACTS

Andrey Shestakov, leading yacht broker of the sales department of Shestakov Yacht Sales Inc. Shestakov Yacht Sales Inc., the official representative of the Miami/Fort Lauderdale FL headquarters.

Contact details

Email: andrey@shestakovyachtsales.com

Web: shestakovyachtsales.com/en/

Telephones

USA: +1(954)274-4435

Office hours

Monday – Saturday: **9:00 - 21:00** EDT

Sunday: **closed**

Address



Harbour Towne Marina, 850 NE 3rd St,
STE 213, Dania, FL 33004