

## TRACY TRASEA — HATTERAS



**Builder:** HATTERAS

**Year Built:** 1992

**Model:** Motor Yacht

**Price:** PRICE ON APPLICATION

**Location:** United States

**LOA:** 40' 0" (12.19m)

**Beam:** 13' 7" (4.14m)

**Min Draft:** 4' 9" (1.45m)

**Max Draft:** 4' 9" (1.45m)

**Cruise Speed:** 17 Kts. (20 MPH)

**Max Speed:** 21 Kts. (24 MPH)

Our experienced yacht broker, Andrey Shestakov, will help you choose and buy a yacht that best suits your needs **Tracy Trasea — HATTERAS** from our catalogue. Presently, at Shestakov Yacht Sales Inc., we have a wide variety of yachts available on our sale's list. We also work in close contact with all the big yacht manufacturers from all over the world.

If you would like to buy a yacht **Tracy Trasea — HATTERAS** or would like help answering any questions concerning purchasing, selling or chartering a yacht, please call **+1(954)274-4435**

# TABLE OF CONTENTS

TABLE OF CONTENTS	2
SPECIFICATIONS	5
Overview	5
Basic Information	5
Dimensions	5
Speed, Capacities and Weight	5
Accommodations	6
Hull and Deck Information	6
Engine Information	6
DETAILED INFORMATION	7
Accommodations	7
Salon	7
Galley	7
Master Stateroom	8
Master Head	8
Bow Stateroom	8
Forward Head	9
Flybridge and Helm	9
Aft Deck	9
Forward Deck	10
Electrical Systems	10
Engine Compartment Bilge	10
Exclusions	11
Disclaimer	11
PHOTOS	12
Profile	12
Salon	12
Salon	12

Salon	12
Salon	12
Salon Table/Ottomans	12
Salon Icemaker	13
Salon	13
Salon Entry	13
Salon TV	13
Master Stateroom	13
Master Stateroom	13
Master Stateroom	14
Master Stateroom	14
Master Stateroom	14
Entrance to Master	14
Master Head	14
Washer/Dryer	14
Master Head	15
Forward Stateroom	15
Forward Stateroom	15
Forward Stateroom	15
Forward Head	16
Galley	16
Galley	16
Galley	16
Power Distribution Panel	17
Helm Bridge	17
Helm Seating	17
Helm Seating	17
Helm Seating	17
Helm Seating	17

---

Helm	18
Helm	18
Dingy	18
Bow Pulpit	18
Bow	18
Aft Deck Storage	18
Aft Deck Storage	19
Aft Deck	19
Aft Deck	19
Aft Deck	19
Aft Deck	19
Profile	19
Profile	20
Stern	20
Engine Access	20
Bilge	20
Bilge	20
Battery Switches	20
Engine Room	21
Bilge	21
Engine Room	21
CONTACTS	22
Contact details	22
Telephones	22
Office hours	22
Address	22

---

# SPECIFICATIONS

---

## Overview

---

NEW LISTING!

If you are in the market for a classic Hatteras 40 Double Cabin Motor Yacht, your search is over. This yacht has been tastefully updated by the current owner and has been maintained to the highest standards and is turn key to cruise anywhere. All the engine maintenance is up to date, a nearly new dinghy and outboard motor is included. It is berthed in a covered slip in St. Petersburg, and **the covered slip is available to the new buyer! RECENT PRICE REDUCTION!**

## Basic Information

---

**Category:** Motor Yacht

**Sub Category:** Aft Cabin

**Model Year:** 1992

**Year Built:** 1992

**Country:** United States

## Dimensions

---

**LOA:** 40' 0" (12.19m)

**Beam:** 13' 7" (4.14m)

**Min Draft:** 4' 9" (1.45m)

**Max Draft:** 4' 9" (1.45m)

## Speed, Capacities and Weight

---

**Cruise Speed:** 17 Kts. (20 MPH)

**Cruise Speed RPM:** 2350 Kts.

**Max Speed:** 21 Kts. (24 MPH)

**Max Speed RPM:** 2800 Kts.

**Displacement:** 38000 Pounds

**Water Capacity:** 110 Gallons

**Holding Tank:** 41 Gallons

**Fuel Capacity:** 359 Gallons

---

## Accommodations

---

**Total Cabins:** 2

**Total Berths:** 3

**Sleeps:** 4

**Total Heads:** 2

---

## Hull and Deck Information

---

**Hull Material:** Fiberglass

**Hull Color:** White

**Hull Designer:** Hatteras

**Exterior Designer:** Hatteras

---

## Engine Information

---

**Engines:** 2

**Manufacturer:** Caterpillar

**Model:** 3208

**Engine Type:** Inboard

**Fuel Type:** Diesel

---

# DETAILED INFORMATION

---

## Accommodations

---

After boarding on the aft deck, you open the salon entry door and descend the steps to the salon. Immediately you will notice the refinished wood finish on the exterior walls, and the expansive salon with a sofa on port side, and custom ottomans and table on the starboard side. Moving aft down a few steps, you will find the spacious master stateroom with center queen berth, storage on either side of the berth, and a head compartment on the port side. A hanging locker on the starboard side is outboard of the washer/dryer compartment door. Just forward of the salon is the galley down on the port side with the electrical distribution panel across on the starboard side in an enclosed cabinet. Forward of the galley is the bow stateroom with upper and lower berths on the port side and a seat on the starboard side. The adjoining forward head is also accessible from the companionway off the galley as a day head.

## Salon

---

- Refinished wood interior wall panels
- Custom two piece sofa by Glastop
- Custom twin ottomans and table
- Whynter ice maker in bar cabinet
- Carpeting replaced in 8/2011
- Carpet runner
- Custom window blinds in 2013
- Vizio 40" LCD Flat screen TV
- Toshiba DVD player
- Sony CD/AM/FM stereo system with speakers
- HDTV antenna mounted on bridge for local HD channel reception
- Access hatch to bilge compartment
- Tinted safety glass
- Sliding side windows
- 12v and 120v light fixtures and indirect lighting
- 120v duplex outlets

## Galley

---

- High pressure laminate counter tops
- NU Teak American Cherry Holly flooring
- Storage cabinets and drawers
- Norcold DE-828 AC/DC refrigerator with freezer
- Roper 240 volt, two-burner cooktop

- LG Microwave oven
- Stainless steel sink
- 12v and 120 volt light fixtures
- 120 volt duplex outlet

---

## Master Stateroom

---

- Center queen berth, pillows, pillow shams
- NU Teak American Cherry Holly flooring
- Samsung 24" LCD TV
- Full dresser with drawers port and starboard
- Kariba washer/dryer combo with stainless steel tub
- Custom window blinds
- Frosted skylight
- Hanging locker

---

## Master Head

---

- NU Teak American Cherry Holly flooring
- Vacuflush head system
- One piece molded lavatory and counter top
- Storage cabinet with mirror
- Storage cabinet under counter
- Stall shower with door and auto sump pump
- Towel bar
- Exhaust blower
- 12v and 120v light fixtures
- 120v duplet outlet

---

## Bow Stateroom

---

- Vizio LCD TV 24"
- NU Teak American Cherry Holly flooring
- Padded vinyl covering on hull sides
- Vinyl headliner
- Vinyl wall covering
- Upper and lower berths with storage underneath
- Poly foam mattresses, spreads, pillows, pillow shams, mattress pads and sheets
- Lounge seat
- Dresser with drawers
- Rope storage locker



- Hanging locker
- Frosted ventilated port lights
- Screened overhead hatch
- 12v and 120v light fixtures
- 120v duplex outlets

---

## Forward Head

---

- NU Teak American Cherry Holly flooring
- Vinyl headliner
- One piece molded lavatory and counter top
- Storage cabinet with mirror
- Storage cabinet under counter
- Stall shower with door and automatic sump pump
- Linen locker
- Towel bar
- Vacuflush Head
- Exhaust blower
- 12v and 120 volt light fixtures
- 120 volt duplex outlet
- Ventilating port light

---

## Flybridge and Helm

---

- Raymarine Hybrid touch GPS plotter
- Raymarine Depth
- Standard Horizon VHF
- Robertson Auto Pilot (inop)
- Helmsman seat
- Hydraulic steering
- Three bench seats with vinyl covered poly foam cushions
- Storage under seat and console
- Stainless steel rails and stanchions
- Tinted acrylic windshield
- Dual lever clutch and throttle controls
- Hydraulic steering

---

## Aft Deck

---

- Full deck carpeting
- Dodger boards

- Stainless steel fly bridge ladder with teak steps
- Door to salon
- Walkways to forward deck
- Aluminum boarding ladder mounted on starboard stanchion
- Molded fiberglass floor with non skid surface under carpeting

---

## Forward Deck

---

- 2014 West Marine 8'6" dinghy with 2014 4HP Mercury 4 stroke outboard
- Fiberglass pulpit with stainless steel anchor chute and roller
- Bow windlass with rode and anchor
- Stainless steel hand rails

---

## Electrical Systems

---

- Two heavy duty, 12 volt batteries
- 120 volt automatic battery charger, 60Hz
- Battery paralleling system with switch at control console
- Transformer connected shoreline inlets
- One 120volt, 30amp, fused electrical inlet with cord
- One 240 volt, 50amp, fused electrical inlet with cord
- 12 and 120 volt light fixtures
- 120 volt duplex outlets
- Battery control panel with fusing and isolation switches
- 12 volt DC distribution panel with magnetic circuit breakers and battery condition meter
- 120/240 volt AC distribution panel with magnetic circuit breakers
- AC switching panel with voltmeter, ammeter, and interlock selector breakers
- 6-Point systems monitor with visual and audible signals for: engines-oil pressure, coolant temperature, drive oil temperature, exhaust temperature, high bilge water, fire warning in engine compartment, engine compartment fire extinguishing system discharge, AC power loss
- Telephone/CATV inlet
- Cruiseair SMX 16,000/12,000 BTU Air conditioning systems with reverse-cycle heat replaced 4/2011
- Ground fault protection on AC receptacles and lighting circuits
- Navigation lights

---

## Engine Compartment Bilge

---

- Twin Caterpillar 3208 diesels 425HP with 975 hours serviced 5/14 **UPGRADE**
- Onan 8kw generator with 507 hours serviced 5/14

- 12v bilge blowers
- 12v enclosed lights
- Fixed fire extinguishing system with automatic/manual controls
- Pressurized freshwater system with 11 gallon water heater
- Water fill hose for engines and generator
- Dockside water connections with pressure reducing valve
- Five automatic electric bilge pumps
- U.L approved fiberglass fuel tanks
- Sewage holding tank plumbed for dockside discharge
- Fuel tank selector manifold

## **Exclusions**

---

Owner's personal belongings.

## **Disclaimer**

---

The Company offers the details of this vessel or yacht in good faith but cannot guarantee or warrant the accuracy of this information nor warrant the condition of the vessel. A buyer should instruct his representatives, agents, or his surveyors, to investigate such details as the buyer desires validated. This vessel or yacht is offered subject to prior sale, price change, or withdrawal without notice.

# PHOTOS

**Profile**



**Salon**



**Salon**



**Salon**



**Salon**



**Salon Table/Ottomans**



**Salon Icemaker**



**Salon**



**Salon Entry**



**Salon TV**



**Master Stateroom**



**Master Stateroom**



**Master Stateroom**



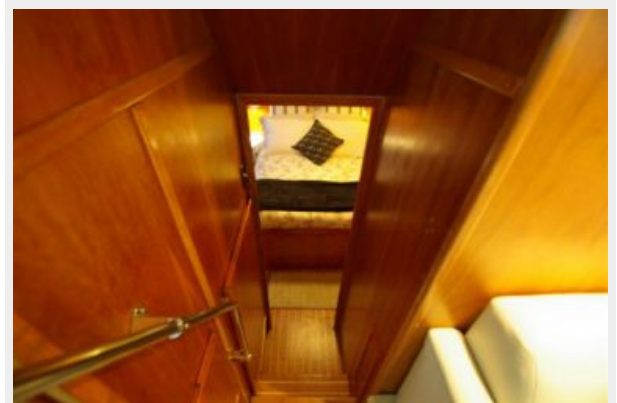
**Master Stateroom**



**Master Stateroom**



**Entrance to Master**



**Washer/Dryer**



**Master Head**



**Master Head**



**Forward Stateroom**



**Forward Stateroom**



**Forward Stateroom**



**Forward Head**



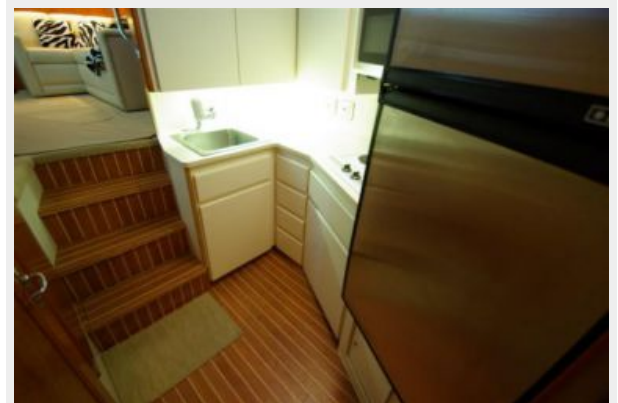
**Galley**



**Galley**



**Galley**





**Power Distribution Panel**



**Helm Bridge**



**Helm Seating**



**Helm Seating**



**Helm Seating**



**Helm Seating**



**Helm**



**Helm**



**Dingy**



**Bow Pulpit**



**Bow**



**Aft Deck Storage**



**Aft Deck Storage**



**Aft Deck**



**Aft Deck**



**Aft Deck**



**Aft Deck**



**Profile**



**Stern**



**Profile**



**Engine Access**



**Bilge**



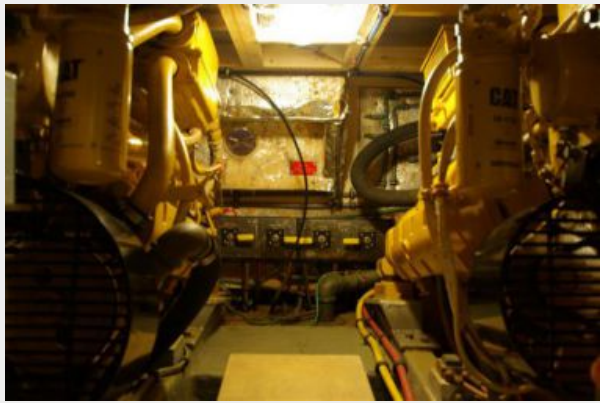
**Bilge**



**Battery Switches**



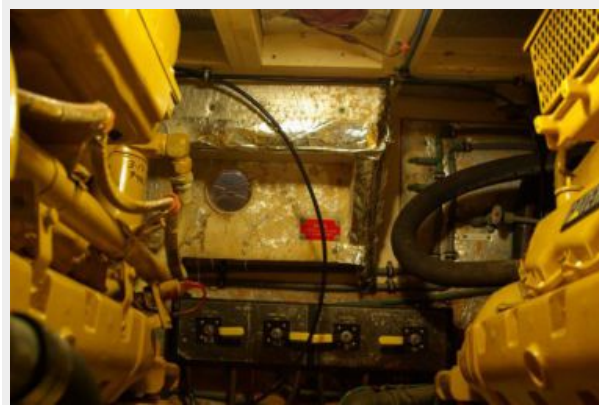
**Engine Room**



**Bilge**



**Engine Room**



# CONTACTS

---

Andrey Shestakov, leading yacht broker of the sales department of Shestakov Yacht Sales Inc. Shestakov Yacht Sales Inc., the official representative of the Miami/Fort Lauderdale FL headquarters.

## Contact details

---

Email: [andrey@shestakovyachtsales.com](mailto:andrey@shestakovyachtsales.com)

Web: [shestakovyachtsales.com/en/](http://shestakovyachtsales.com/en/)

## Telephones

---

USA: +1(954)274-4435

## Office hours

---

Monday – Saturday: **9:00 - 21:00** EDT

Sunday: **closed**

## Address

---



Harbour Towne Marina, 850 NE 3rd St,  
STE 213, Dania, FL 33004