

TRACY TRASEA — HATTERAS



Судостроитель: HATTERAS

Год постройки: 1992

Модель: Моторная яхта

Цена: ЦЕНА ЯХТЫ ПО ЗАПРОСУ

Местонахождение: United States

Длина общая: 40' 0" (12.19m)

Ширина: 13' 7" (4.14m)

Мин. осадка: 4' 9" (1.45m)

Макс. осадка: 4' 9" (1.45m)

Крейс. скорость: 17 Kts. (20 MPH)

Макс. скорость: 21 Kts. (24 MPH)

Купить Tracy Trasea — HATTERAS а также выбрать подходящую вам яхту из нашего каталога яхт вам поможет опытный яхтенный брокер Андрей Шестаков. На сегодняшний день компания Shestakov Yacht Sales Inc. имеет большое количество яхт в собственном списке продаж, а также тесно сотрудничает со всеми крупными яхтенными производителями по всему миру.

Для того чтобы купить яхту Tracy Trasea — HATTERAS а также проконсультироваться по любому вопросу связанному с покупкой, продажей, чартером яхт позвоните по телефону **+7(918)465-66-44**.

ОГЛАВЛЕНИЕ

ОГЛАВЛЕНИЕ	2
ХАРАКТЕРИСТИКИ	5
Обзор	5
Основная информация	5
Размеры	5
Скорость, вместимость и масса	6
Размещение	6
Корпус и палуба	6
Информация о двигателе	6
ПОДРОБНОЕ ОПИСАНИЕ	7
Accommodations	7
Salon	7
Galley	7
Master Stateroom	8
Master Head	8
Bow Stateroom	8
Forward Head	9
Flybridge and Helm	9
Aft Deck	9
Forward Deck	10
Electrical Systems	10
Engine Compartment Bilge	10
Исключения	11
Отказ от ответственности	11
ФОТОГРАФИИ	12
Profile	12
Salon	12
Salon	12

Salon	12
Salon	12
Salon Table/Ottomans	12
Salon Icemaker	13
Salon	13
Salon Entry	13
Salon TV	13
Master Stateroom	13
Master Stateroom	13
Master Stateroom	14
Master Stateroom	14
Master Stateroom	14
Entrance to Master	14
Master Head	14
Washer/Dryer	14
Master Head	15
Forward Stateroom	15
Forward Stateroom	15
Forward Stateroom	15
Forward Head	16
Galley	16
Galley	16
Galley	16
Power Distribution Panel	17
Helm Bridge	17
Helm Seating	17
Helm Seating	17
Helm Seating	17
Helm Seating	17

Helm	18
Helm	18
Dingy	18
Bow Pulpit	18
Bow	18
Aft Deck Storage	18
Aft Deck Storage	19
Aft Deck	19
Aft Deck	19
Aft Deck	19
Aft Deck	19
Profile	19
Profile	20
Stern	20
Engine Access	20
Bilge	20
Bilge	20
Battery Switches	20
Engine Room	21
Bilge	21
Engine Room	21
КОНТАКТЫ	22
Контактная информация	22
Телефоны	22
Время работы	22
Адрес	22

ХАРАКТЕРИСТИКИ

Обзор

NEW LISTING!

If you are in the market for a classic Hatteras 40 Double Cabin Motor Yacht, your search is over. This yacht has been tastefully updated by the current owner and has been maintained to the highest standards and is turn key to cruise anywhere. All the engine maintenance is up to date, a nearly new dinghy and outboard motor is included. It is berthed in a covered slip in St. Petersburg, and **the covered slip is available to the new buyer! RECENT PRICE REDUCTION!**

Основная информация

Тип судна: Моторная яхта

Подкатегория: Aft Cabin

Модельный год: 1992

Год постройки: 1992

Страна: United States

Размеры

Длина общая: 40' 0" (12.19m)

Ширина: 13' 7" (4.14m)

Мин. осадка: 4' 9" (1.45m)

Макс. осадка: 4' 9" (1.45m)

Скорость, вместимость и масса

Крейс. скорость: 17 Kts. (20 MPH)

Крейсерская скорость поворота: 2350 Kts.

Макс. скорость: 21 Kts. (24 MPH)

Макс. скорость поворота: 2800 Kts.

Водоизмещение: 38000 Pounds

Вместимость воды: 110 Gallons

Вместимость сточного бака: 41 Gallons

Объем топливного бака: 359 Gallons

Размещение

Всего кают: 2

Всего коек: 3

Спальные места: 4

Всего ком. состава: 2

Корпус и палуба

Материал корпуса: Fiberglass

Цвет корпуса: White

Дизайнер корпуса: Hatteras

Дизайнер экстерьера: Hatteras

Информация о двигателе

Двигатели: 2

Производитель: Caterpillar

Модель: 3208

Тип двигателя: Inboard

Тип топлива: Diesel

ПОДРОБНОЕ ОПИСАНИЕ

Accommodations

After boarding on the aft deck, you open the salon entry door and descend the steps to the salon. Immediately you will notice the refinished wood finish on the exterior walls, and the expansive salon with a sofa on port side, and custom ottomans and table on the starboard side. Moving aft down a few steps, you will find the spacious master stateroom with center queen berth, storage on either side of the berth, and a head compartment on the port side. A hanging locker on the starboard side is outboard of the washer/dryer compartment door. Just forward of the salon is the galley down on the port side with the electrical distribution panel across on the starboard side in an enclosed cabinet. Forward of the galley is the bow stateroom with upper and lower berths on the port side and a seat on the starboard side. The adjoining forward head is also accessible from the companionway off the galley as a day head.

Salon

- Refinished wood interior wall panels
- Custom two piece sofa by Glastop
- Custom twin ottomans and table
- Whynter ice maker in bar cabinet
- Carpeting replaced in 8/2011
- Carpet runner
- Custom window blinds in 2013
- Vizio 40" LCD Flat screen TV
- Toshiba DVD player
- Sony CD/AM/FM stereo system with speakers
- HDTV antenna mounted on bridge for local HD channel reception
- Access hatch to bilge compartment
- Tinted safety glass
- Sliding side windows
- 12v and 120v light fixtures and indirect lighting
- 120v duplex outlets

Galley

- High pressure laminate counter tops
- NU Teak American Cherry Holly flooring
- Storage cabinets and drawers
- Norcold DE-828 AC/DC refrigerator with freezer
- Roper 240 volt, two-burner cooktop

- LG Microwave oven
- Stainless steel sink
- 12v and 120 volt light fixtures
- 120 volt duplex outlet

Master Stateroom

- Center queen berth, pillows, pillow shams
- NU Teak American Cherry Holly flooring
- Samsung 24" LCD TV
- Full dresser with drawers port and starboard
- Kariba washer/dryer combo with stainless steel tub
- Custom window blinds
- Frosted skylight
- Hanging locker

Master Head

- NU Teak American Cherry Holly flooring
- Vacuflush head system
- One piece molded lavatory and counter top
- Storage cabinet with mirror
- Storage cabinet under counter
- Stall shower with door and auto sump pump
- Towel bar
- Exhaust blower
- 12v and 120v light fixtures
- 120v duplet outlet

Bow Stateroom

- Vizio LCD TV 24"
- NU Teak American Cherry Holly flooring
- Padded vinyl covering on hull sides
- Vinyl headliner
- Vinyl wall covering
- Upper and lower berths with storage underneath
- Poly foam mattresses, spreads, pillows, pillow shams, mattress pads and sheets
- Lounge seat
- Dresser with drawers
- Rope storage locker

- Hanging locker
- Frosted ventilated port lights
- Screened overhead hatch
- 12v and 120v light fixtures
- 120v duplex outlets

Forward Head

- NU Teak American Cherry Holly flooring
- Vinyl headliner
- One piece molded lavatory and counter top
- Storage cabinet with mirror
- Storage cabinet under counter
- Stall shower with door and automatic sump pump
- Linen locker
- Towel bar
- Vacuflush Head
- Exhaust blower
- 12v and 120 volt light fixtures
- 120 volt duplex outlet
- Ventilating port light

Flybridge and Helm

- Raymarine Hybrid touch GPS plotter
- Raymarine Depth
- Standard Horizon VHF
- Robertson Auto Pilot (inop)
- Helmsman seat
- Hydraulic steering
- Three bench seats with vinyl covered poly foam cushions
- Storage under seat and console
- Stainless steel rails and stanchions
- Tinted acrylic windshield
- Dual lever clutch and throttle controls
- Hydraulic steering

Aft Deck

- Full deck carpeting
- Dodger boards

- Stainless steel fly bridge ladder with teak steps
- Door to salon
- Walkways to forward deck
- Aluminum boarding ladder mounted on starboard stanchion
- Molded fiberglass floor with non skid surface under carpeting

Forward Deck

- 2014 West Marine 8'6" dinghy with 2014 4HP Mercury 4 stroke outboard
- Fiberglass pulpit with stainless steel anchor chute and roller
- Bow windlass with rode and anchor
- Stainless steel hand rails

Electrical Systems

- Two heavy duty, 12 volt batteries
- 120 volt automatic battery charger, 60Hz
- Battery paralleling system with switch at control console
- Transformer connected shoreline inlets
- One 120volt, 30amp, fused electrical inlet with cord
- One 240 volt, 50amp, fused electrical inlet with cord
- 12 and 120 volt light fixtures
- 120 volt duplex outlets
- Battery control panel with fusing and isolation switches
- 12 volt DC distribution panel with magnetic circuit breakers and battery condition meter
- 120/240 volt AC distribution panel with magnetic circuit breakers
- AC switching panel with voltmeter, ammeter, and interlock selector breakers
- 6-Point systems monitor with visual and audible signals for: engines-oil pressure, coolant temperature, drive oil temperature, exhaust temperature, high bilge water, fire warning in engine compartment, engine compartment fire extinguishing system discharge, AC power loss
- Telephone/CATV inlet
- Cruiseair SMX 16,000/12,000 BTU Air conditioning systems with reverse-cycle heat replaced 4/2011
- Ground fault protection on AC receptacles and lighting circuits
- Navigation lights

Engine Compartment Bilge

- Twin Caterpillar 3208 diesels 425HP with 975 hours serviced 5/14 **UPGRADE**
- Onan 8kw generator with 507 hours serviced 5/14

- 12v bilge blowers
- 12v enclosed lights
- Fixed fire extinguishing system with automatic/manual controls
- Pressurized freshwater system with 11 gallon water heater
- Water fill hose for engines and generator
- Dockside water connections with pressure reducing valve
- Five automatic electric bilge pumps
- U.L approved fiberglass fuel tanks
- Sewage holding tank plumbed for dockside discharge
- Fuel tank selector manifold

Исключения

При продаже яхты исключаются личные вещи владельца.

Отказ от ответственности

Компания предоставляет описание судна или яхты добросовестно, но не может гарантировать точность этой информации, а также не ручается за техническое состояние. Покупатель должен проинструктировать своих агентов или оценщиков исследовать представленную информацию более подробно, по собственному желанию. Продажа судна или яхты, изменение цены или снятие с продажи будет происходить без предварительного уведомления.

ФОТОГРАФИИ

Profile



Salon



Salon



Salon



Salon



Salon Table/Ottomans



Salon Icemaker



Salon



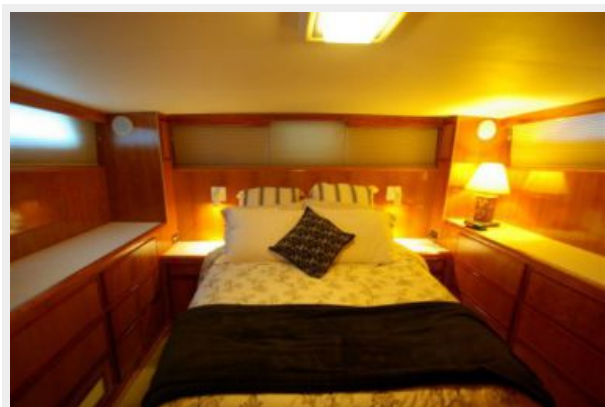
Salon Entry



Salon TV



Master Stateroom



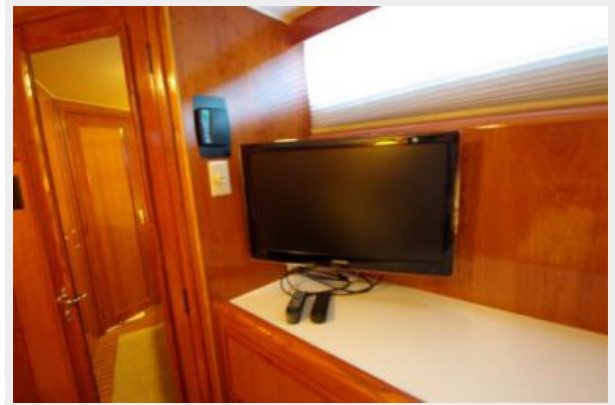
Master Stateroom



Master Stateroom



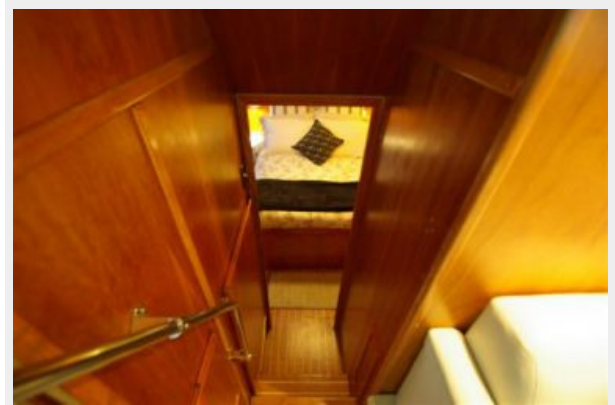
Master Stateroom



Master Stateroom



Entrance to Master



Washer/Dryer



Master Head



Master Head



Forward Stateroom



Forward Stateroom



Forward Stateroom



Forward Head



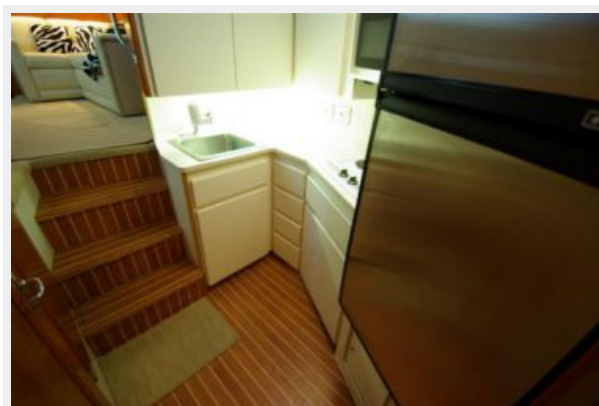
Galley



Galley



Galley



Power Distribution Panel



Helm Bridge



Helm Seating



Helm Seating



Helm Seating



Helm Seating



Helm



Helm



Dingy



Bow Pulpit



Bow



Aft Deck Storage



Aft Deck Storage



Aft Deck



Aft Deck



Aft Deck



Aft Deck



Profile



Stern



Profile



Engine Access



Bilge



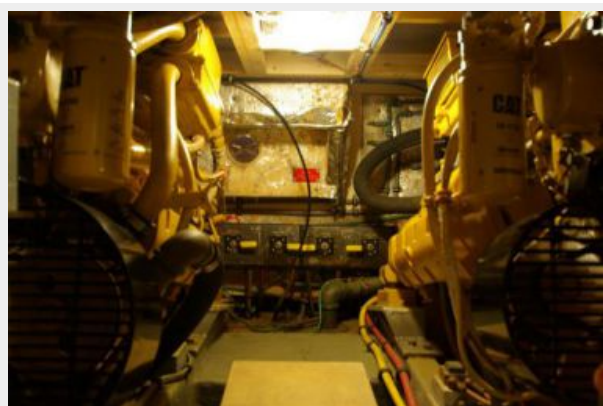
Bilge



Battery Switches



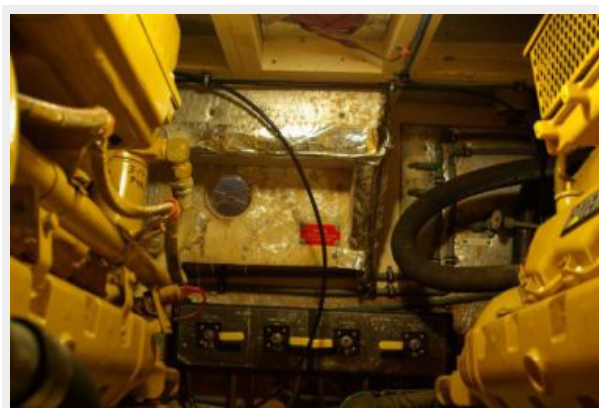
Engine Room



Bilge



Engine Room



КОНТАКТЫ

Андрей Шестаков (Andrey Shestakov) – ведущий яхтенный брокер отдела продаж яхт и судов компании Shestakov Yacht Sales Inc. Официальный представитель Shestakov Yacht Sales Inc. для русскоговорящих клиентов в центральном офисе компании в Майами/Форт Лодердейл/Флорида/США.

Контактная информация

Email: andrey@shestakovyachtsales.com

Web: shestakovyachtsales.com

Телефоны

Краснодарский край: **+7(918)465-66-44**

США, Майами, Флорида: **+1(954)274-4435**

Время работы

Понедельник – Суббота: **9:00 - 21:00**
EDT

Воскресенье: **Закрето**

Адрес



Harbour Towne Marina, 850 NE 3rd St,
STE 213, Dania, FL 33004