

PLUMB CRAZY — VIKING



Судостроитель: VIKING

Год постройки: 2006

Модель: Моторная яхта

Цена: **ЦЕНА ЯХТЫ ПО ЗАПРОСУ**

Местонахождение: United States

Длина общая: 52' 0" (15.85m)

Ширина: 17' 5" (5.31m)

Крейс. скорость: 33 Kts. (38 MPH)

Макс. скорость: 36 Kts. (41 MPH)

Купить **Plumb Crazy — VIKING** а также выбрать подходящую вам яхту из нашего каталога яхт вам поможет опытный яхтенный брокер Андрей Шестаков. На сегодняшний день компания **Shestakov Yacht Sales Inc.** имеет большое количество яхт в собственном списке продаж, а также тесно сотрудничает со всеми крупными яхтенными производителями по всему миру.

Для того чтобы купить яхту **Plumb Crazy — VIKING** а также проконсультироваться по любому вопросу связанному с покупкой, продажей, чартером яхт позвоните по телефону **+7(918)465-66-44**.

ОГЛАВЛЕНИЕ

ОГЛАВЛЕНИЕ	2
ХАРАКТЕРИСТИКИ	4
Обзор	4
Основная информация	4
Размеры	4
Скорость, вместимость и масса	4
Размещение	4
Корпус и палуба	4
Информация о двигателе	5
ПОДРОБНОЕ ОПИСАНИЕ	6
Remarks	6
Salon and Dinette	6
Galley	7
Companionway	7
Master Stateroom and Head	7
Forward Stateroom and Head	8
Starboard Stateroom	8
Flybridge and Electronics	8
Cockpit	9
Engine Room	10
Deck Exterior	11
Tower	11
Exclusions	13
Disclaimer	13
Исключения	13
Отказ от ответственности	13
ФОТОГРАФИИ	14
Salon	14

Dinette	14
Galley	14
Master Stateroom	14
Master Head	15
Forward Guest Stateroom	15
Guest Stateroom	15
Rod storage	15
Bridge Chairs	16
Bridge Helm	16
Cockpit	16
Fighting chair	16
Engine Room	16
Engine Room	16
Engine Room	17
Engine Room	17
Engine Room	17
Onan Generator	17
КОНТАКТЫ	18
Контактная информация	18
Телефоны	18
Время работы	18
Адрес	18

ХАРАКТЕРИСТИКИ

Обзор

Galati Yacht Sales has been committed to exceeding the expectations of its customers for more than 42 years, and we understand that purchasing a boat is a big decision. Our professional staff is here to assist you in every way – before, during and after the sale. Please feel free to contact us with any questions that you may have.

Основная информация

Тип судна: Моторная яхта

Подкатегория: Convertible

Модельный год: 2006

Год постройки: 2006

Страна: United States

Регистрационный номер: 1185266

Размеры

Длина общая: 52' 0" (15.85m)

Ширина: 17' 5" (5.31m)

Скорость, вместимость и масса

Крейс. скорость: 33 Kts. (38 MPH)

Макс. скорость: 36 Kts. (41 MPH)

Водоизмещение: 62000 Pounds

Вместимость воды: 205 Gallons

Вместимость сточного бака: 52 Gallons

Объем топливного бака: 1400 Gallons

Размещение

Всего кают: 3

Корпус и палуба

Материал корпуса: Fiberglass

Информация о двигателе

Двигатели: 2

Производитель: MAN

Модель: V12 1360

Тип двигателя: Inboard

Тип топлива: Diesel

ПОДРОБНОЕ ОПИСАНИЕ

Remarks

Rare opportunity! A very well kept and outfitted 52' Convertible powered with 1360 Common Rail MANS. The 52' is one of the most successful hulls ever designed by Viking, hence the fact that there are 4 different models built off the same hull. Packed with plenty of fuel and low mid 30's cruise the Viking 52' Convertible sets itself apart from the rest. Great helm visibility, spacious flybridge, large functional cockpit carrying a 17'5" beam a very generous 3 stateroom, 2 head arrangement with open galley and salon. The 52' Viking Convertible is hard to top. They have reached a price point offering a terrific performing vessel with a big boat attitude that is efficient and manageable for the owner operator on one of Vikings best mid-range designs. Plumb Crazy has all the extras the 52' needs to make it the ultimate tournament fishing machine.

Salon and Dinette

Electric "Open/Close" mechanism on salon door

Entertainment System with TV, VCR, FM Stereo, CD/DVD Player

Viking Home Theater Audio/Video Upgrade

Teak entertainment center with teak bullnose

Kenmore Clear Ice Maker

Custom Amtico Cherry flooring with trim at entranceway

42" Plasma TV above dinette table

Custom teak cocktail table

Tinted and tempered glass in windows

Teak Valances

Teak wire box

Teak aft bulkhead

Salon door dampener

Dimmer switches on quartz lights

Dimmers on low voltage AC lighting

Dimmers on low voltage AC lighting for Dinette

Full Carpet runner

Galley

Amtico cherry flooring

Brushed nickel hot water dispenser

S/S Sink

Sharp Microwave/Convection oven

Under counter Sub-zero refrigerator with drawers

Granite countertop

Birds Eye maple dinette table with teak trim

Companionway

Central Vacuum

Rod Locker

Carpet runner with step covers

Lighting dimmers

Master Stateroom and Head

15" Flat screened color TV

Teak end table tops

End Table lamps are hardwired

12v Stereo CD Player

King Memory Foam mattress

Amtico cherry flooring in head

Granite vanity countertop with bone sink

Brushed nickel sink and shower hardware

Curved vanity

Mirror

Forward Stateroom and Head

Upper/lower berths

Memory Foam Mattresses

15" Flat screened, color TV

Antico cherry flooring in head

Granite vanity countertop with bone sink

Brushed nickel sink and shower hardware

Curved vanity

Mirror

Starboard Stateroom

Upper/Lower bunks

Memory Foam Mattresses

TV outlet

Flybridge and Electronics

Glendinning cable master

Power assist steering

Recessed Electronics box

12v outlet in radio box at helm

Release Marine Custom teak helm pod

Electronic single lever controls for pod

Rex Roth engine controls

Electronic trolling valves

(2) Release Marine custom helm chairs with polished S/S 4" pedestals and teak footboards

Insulated soda box below starboard jump seat

Removable jumpseat backrest

(2) Helm Chair covers

ELECTRONICS:

VHF Radio ICOM-602

Infinity Stereo speakers

2 Additional speakers

Poly Planar Stereo/CD player

VHF Radio Standard Horizon GX2360S

Northstar 6100i GPS 10.4 inch

Northstar 6100i GPS 6.4 inch

(2) Furuno MFD 15 inch Monitors

Furuno FCV1200L Color Sounder

Furuno FAR 21x7-BB 72 mile radar

Furuno AIS

Furuno RD30

Cockpit

Transom Swim Steps

Walk-through transom door with lift up gate

Transom coaming with gate and transom fish box

Window and light in transom fish box

Transom fish box plumbed as livewell

Macerator T-12 pump for fishbox discharge and in-deck well discharge

Drawers in starboard cockpit locker

Cutting board with drawers extended to full height

Gulf Coast style fish box

Bose 151 cockpit speakers

Tackle cabinet, bait center and drawers

S/S gas springs on port and starboard sole box lids

S/S gas springs for fishbox lids

(4) Rod holders

Polished S/S bezzel for deck lights

Eskimo Ice Machine with discharge into in-deck well

Refrigerated cockpit step cooler

Engine room door and transom gate have straps

Recessed Fish box

Fresh & Seawater wash down

Indirect rope lighting

Cable TV and Phone connection

Engine controls

Engine Room

Awlgrip

Onan 21 kW Generator

Dual power steering pumps

Gas/water separator for generator

Awlgrip brass thru-hulls & sea strainers in engine room and forward bilges

Fuel filters and all pumps painted white

Oil changing system, engines & generator

Remotely mounted starboard engine lub oil filter to inboard side for easier access

Voltage stabilizer transformer

220 volt AC receptacle

Headhunter freshwater pump

Y-valved emergency bilge pumps

Fuel system priming pumps

Dual fuel filters

Deck Exterior

Bow Pulpit

Lewmar V4 SS Windlass

Flybridge handrails around the front and 18" on each side

Fresh water washdown in anchor locker

Tower

Palm Beach Tuna Tower with molded top

Brushed pipe

(2) Antennas and Stand-offs

(2) Halyards

3 Sided Track on Bimini Rail

(4) White Recessed Lights

(2) Red Recessed Lights

Oval style radar pod

Sliding Teaser Reel Door, brackets and runs

Molded standing Platform with coupler box

110v Quartz light pod with S/S bezel

110v Quartz light with S/S bezel on molded forward platform

50" Control box with flush mounted compass

Sunshade molded with painted oval center tube and 3 welded antenna mounts

3 Sided bridge rail

Safety rail at ladder opening

Rod Holders

Rex Roth Controls and Steering

41' Outrigger Rupp

41' 3-Spreader Bridge release

Rigger locks

Rupp Center Rigger

SAT TV Dome

3 Sided EZ2CY track to track Enclosure

Powder Coated Aluminum Flangeless track

Air Vent

Miya Epoch Super US9 24v Electric Teaser Reels

Aft flag staff

Bench seat with backrest

Port and starboard molded navigational lights

Molded stern light

Drop down electronics box with electric actuator and MANs display

(6) Recessed lights

(3) Quartz lights

Masthead/anchor light

3 color LED recessed hardtop lights

(6) hardtop 3 way integrated illuminated Systems LED lights

Exclusions

Owner's personal property.

Disclaimer

The Company offers the details of this vessel in good faith but cannot guarantee or warrant the accuracy of this information nor warrant the condition of the vessel. A buyer should instruct his agents, or his surveyors, to investigate such details as the buyer desires validated. This vessel is offered subject to prior sale, price change, or withdrawal without notice.

Исключения

При продаже яхты исключаются личные вещи владельца.

Отказ от ответственности

Компания предоставляет описание судна или яхты добросовестно, но не может гарантировать точность этой информации, а также не ручается за техническое состояние. Покупатель должен проинструктировать своих агентов или оценщиков исследовать представленную информацию более подробно, по собственному желанию. Продажа судна или яхты, изменение цены или снятие с продажи будет происходить без предварительного уведомления.

ФОТОГРАФИИ

Salon



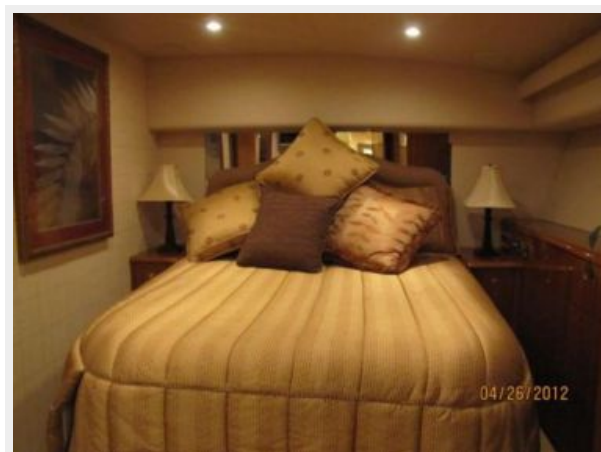
Dinette



Galley



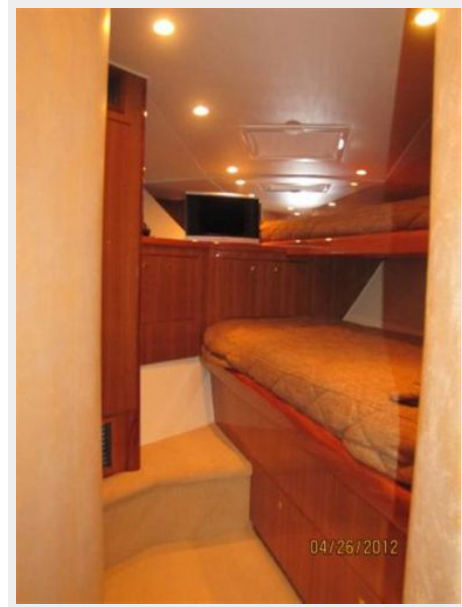
Master Stateroom



Master Head



Forward Guest Stateroom



Guest Stateroom



Rod storage



Bridge Helm



Bridge Chairs



Cockpit



Fighting chair



Engine Room



Engine Room



Engine Room



Engine Room



Engine Room



Onan Generator



КОНТАКТЫ

Андрей Шестаков (Andrey Shestakov) – ведущий яхтенный брокер отдела продаж яхт и судов компании Shestakov Yacht Sales Inc. Официальный представитель Shestakov Yacht Sales Inc. для русскоговорящих клиентов в центральном офисе компании в Майами/Форт Лодердейл/Флорида/США.

Контактная информация

Email: andrey@shestakovyachtsales.com

Web: shestakovyachtsales.com

Телефоны

Краснодарский край: **+7(918)465-66-44**

США, Майами, Флорида: **+1(954)274-4435**

Время работы

Понедельник – Суббота: **9:00 - 21:00**
EDT

Воскресенье: **Закрето**

Адрес



Harbour Towne Marina, 850 NE 3rd St,
STE 213, Dania, FL 33004