

MISS B — JARRETT BAY



Builder: JARRETT BAY

Year Built: 1989

Model: Sport Fisherman

Price: PRICE ON APPLICATION

Location: United States

LOA: 36' 0" (10.97m)

Beam: 14' 5" (4.39m)

Min Draft: 3' 0" (0.91m)

Max Draft: 3' 7" (1.09m)

Cruise Speed: 24 Kts. (28 MPH)

Max Speed: 28 Kts. (32 MPH)

Our experienced yacht broker, Andrey Shestakov, will help you choose and buy a yacht that best suits your needs **MISS B — JARRETT BAY** from our catalogue. Presently, at Shestakov Yacht Sales Inc., we have a wide variety of yachts available on our sale's list. We also work in close contact with all the big yacht manufacturers from all over the world.

If you would like to buy a yacht **MISS B — JARRETT BAY** or would like help answering any questions concerning purchasing, selling or chartering a yacht, please call **+1(954)274-4435**

TABLE OF CONTENTS

TABLE OF CONTENTS	2
SPECIFICATIONS	3
Overview	3
Basic Information	3
Dimensions	3
Speed, Capacities and Weight	3
Accommodations	3
Hull and Deck Information	4
Engine Information	4
PHOTOS	5
CONTACTS	19
Contact details	19
Telephones	19
Office hours	19
Address	19

SPECIFICATIONS

Overview

Good looking, well maintained and ready to fish or cruise, this is a great value in a Carolina custom flybridge sportfish with a comfortable and functional open interior layout and large cockpit. Built by Jarrett Bay in 1989, she was re-powered and refit in 2004. Engine room detailing and exterior polishing completed in August 2014.

Basic Information

Category: Sport Fisherman	Model Year: 1989
Year Built: 1989	Refit Year: 2004
Refit Type: Re-power and upgrades	Country: United States
Fly Bridge: Yes	Cockpit: Yes

Dimensions

LOA: 36' 0" (10.97m)	Beam: 14' 5" (4.39m)
Min Draft: 3' 0" (0.91m)	Max Draft: 3' 7" (1.09m)

Speed, Capacities and Weight

Cruise Speed: 24 Kts. (28 MPH)	Max Speed: 28 Kts. (32 MPH)
Displacement: 26000 Pounds	Fuel Capacity: 200 Gallons
Fuel Consumption: 22 Gallons	

Accommodations

Total Cabins: 1

Hull and Deck Information

Hull Material: GRP/Wood

Deck Material: Fiberglass over Wood

Hull Configuration: Modified V-Hull

Hull Color: Ice Blue

Hull Designer: Jarrett Bay

Engine Information

Engines: 2

Manufacturer: Cummins

Model: 6BTA Diamond Series

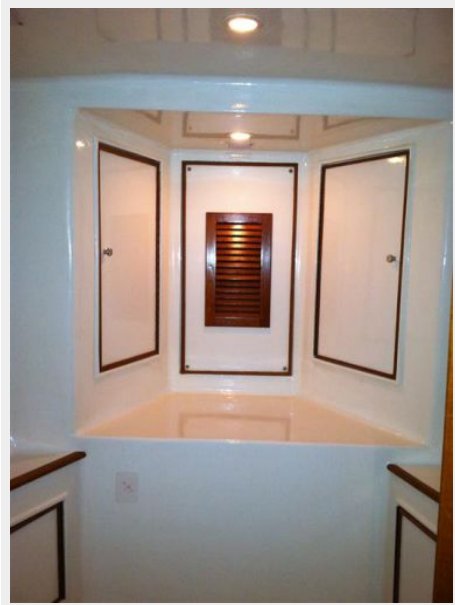
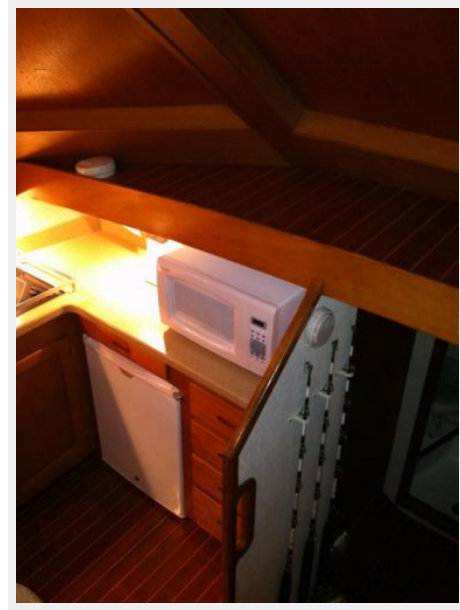
Engine Type: Inboard

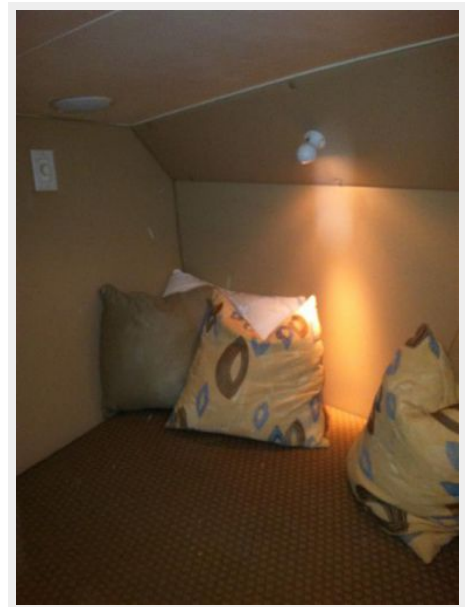
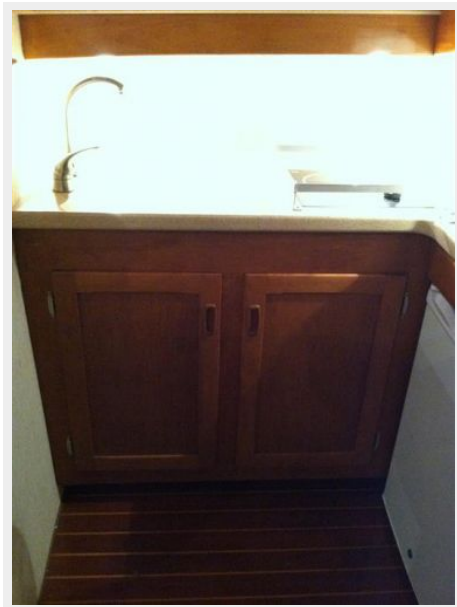
Fuel Type: Diesel

PHOTOS



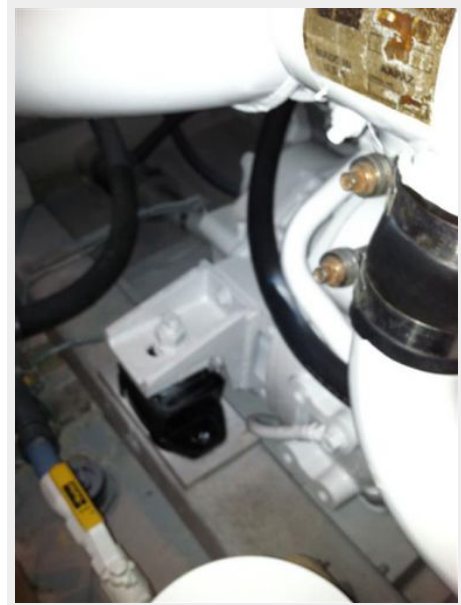
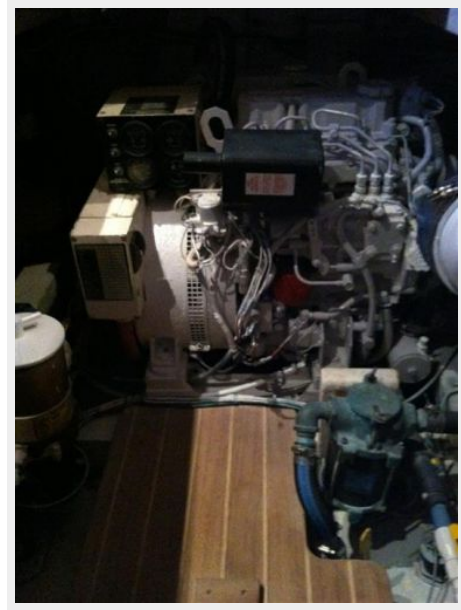


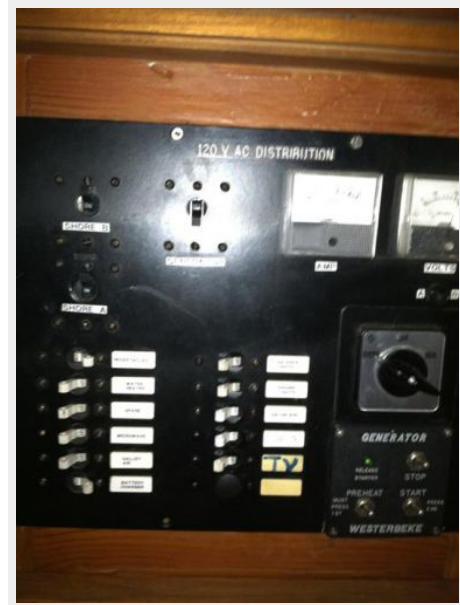




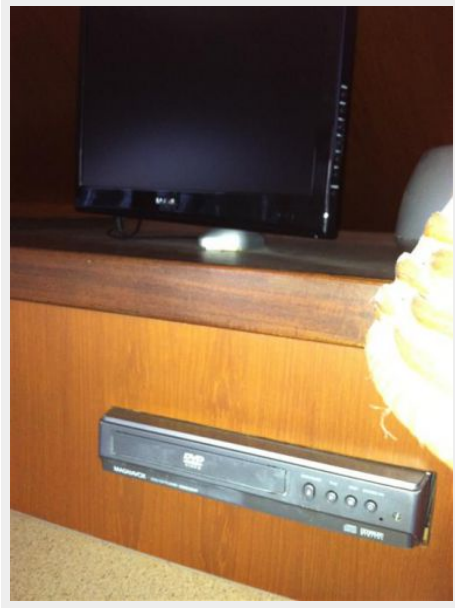






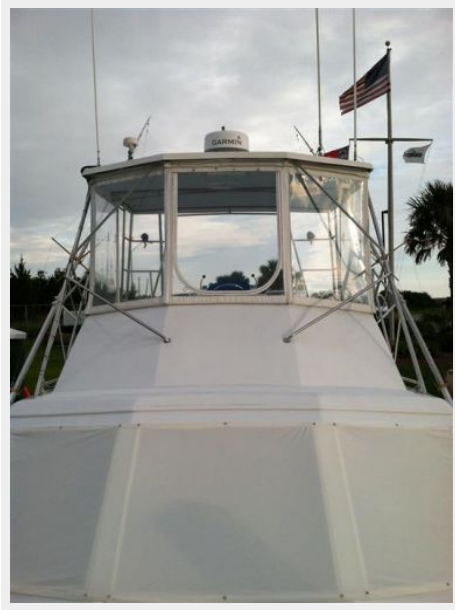














CONTACTS

Andrey Shestakov, leading yacht broker of the sales department of Shestakov Yacht Sales Inc. Shestakov Yacht Sales Inc., the official representative of the Miami/Fort Lauderdale FL headquarters.

Contact details

Email: andrey@shestakovyachtsales.com

Web: shestakovyachtsales.com/en/

Telephones

USA: +1(954)274-4435

Office hours

Monday – Saturday: **9:00 - 21:00** EDT

Sunday: **closed**

Address



Harbour Towne Marina, 850 NE 3rd St,
STE 213, Dania, FL 33004