

NO NAME — CHEOY LEE



Судостроитель: CHEOY LEE

Год постройки: 1983

Модель: Моторный парусник

Цена: **ЦЕНА ЯХТЫ ПО ЗАПРОСУ**

Местонахождение: United States

Длина общая: 63' 0" (19.20m)

Ширина: 18' 6" (5.64m)

Макс. осадка: 6' 6" (1.98m)

Крейс. скорость: 8 Kts. (9 MPH)

Макс. скорость: 10 Kts. (12 MPH)

Купить No Name — CHEOY LEE а также выбрать подходящую вам яхту из нашего каталога яхт вам поможет опытный яхтенный брокер Андрей Шестаков. На сегодняшний день компания Shestakov Yacht Sales Inc. имеет большое количество яхт в собственном списке продаж, а также тесно сотрудничает со всеми крупными яхтенными производителями по всему миру.

Для того чтобы купить яхту No Name — CHEOY LEE а также проконсультироваться по любому вопросу связанному с покупкой, продажей, чартером яхт позвоните по телефону **+7(918)465-66-44**.

ОГЛАВЛЕНИЕ

ОГЛАВЛЕНИЕ	2
ХАРАКТЕРИСТИКИ	3
Обзор	3
Основная информация	3
Размеры	3
Скорость, вместимость и масса	3
Размещение	3
Корпус и палуба	3
Информация о двигателе	4
ПОДРОБНОЕ ОПИСАНИЕ	5
Accommodations	5
Galley & Laundry	6
Electronics & Navigation	6
Electrical Equipment	7
Deck Equipment	7
Sails & Rigging	8
Mechanical	9
Other Features	9
Exclusions	9
Исключения	10
Отказ от ответственности	10
ФОТОГРАФИИ	11
КОНТАКТЫ	28
Контактная информация	28
Телефоны	28
Время работы	28
Адрес	28

ХАРАКТЕРИСТИКИ

Обзор

Only a handful of these highly sought after motor sailers were ever built and are rarely seen on the market. This one is worth the trip from anywhere - you won't be disappointed! An outstanding example of this model in pristine condition!

Основная информация

Тип судна: Моторный парусник

Модельный год: 1983

Год постройки: 1983

Страна: United States

Размеры

Длина общая: 63' 0" (19.20m)

Ширина: 18' 6" (5.64m)

Макс. осадка: 6' 6" (1.98m)

Скорость, вместимость и масса

Крейс. скорость: 8 Kts. (9 MPH)

Макс. скорость: 10 Kts. (12 MPH)

Водоизмещение: 98500 Pounds

Вместимость воды: 1270 Gallons

Объем топливного бака: 1500 Gallons

Размещение

Всего кают: 4

Всего ком. состава: 4

Корпус и палуба

Материал корпуса: Fiberglass

Информация о двигателе

Двигатели: 2

Производитель: Caterpillar

Модель: 3208-N

Тип двигателя: Inboard

Тип топлива: Diesel

ПОДРОБНОЕ ОПИСАНИЕ

Accommodations

Sitting majestically dock side, this ocean voyager at first glance presents herself as almost new. The highly waxed cabin house, gleaming chrome, and the glistening varnish accents are a tribute to an owner who maintains this craft with an open checkbook policy. The stainless steel rails that encircle the deck provide safety underway and the convenient midship and aft deck gates allow for easy boarding. The wide teak decks insure safe footing all around. The new window frames around the cabin deck and pilothouse provide great visibility and ample light below. When going to the forward deck you will see a very capable Lowfrans windlass securing the two massive naval stock anchors. A rigid hull inflatable with 20 hp Honda 4 stroke makes easy access to any island you are anchored off of. The Raised Aft Helm Deck provides an unobstructed 360 degree view for the captain and crew. The large u-shaped aft deck settee makes an excellent place for an afternoon lunch, dining under the stars, or just a lazy day off reading.

When entering the roomy pilothouse you will encounter a well laid out command center. The portside helm provides great viewing through all the large cabin windows. The forward windshield has two wipers and a vented center window.

All the varnished teak wood gives a warm rich feeling. The electronics are all within arms reach and a large counter top next to the helm provides plenty of space for charting your voyage. Aft is a large bench seat with storage below. Several cabinets provide storage along with access to the ships DC distribution panel. The overhead is finished in white panels with teak accent strips and recessed upgraded LED lighting. Other highlights include a Boston Quartz Ships clock, chart locker, vessel angle indicator, brass reading lights, and a new manufactured wood sole.

From the Pilothouse going down 4 steps brings you into the huge salon & galley area. An all new overhead consisting of white panels and teak trim reflect plenty of light around the salon. Forward to port is a huge L shaped settee with storage below. Across to port is another huge L shaped settee with a large teak table top with storage below. The entire cabin sole has been redone in a manufactured wood finish. Other features include curtains all around, book & CD racks, clock & barometer, overhead hand rails, accent lights, and two deck hatches. The galley is located port side aft of the salon. The u shaped galley boasts gas oven & stove, stainless double sink, microwave, refrigerator, and abundant storage.

Forward of the salon down 4 steps is the forward companionway area. This area gives access to the 3 forward cabins and 3 heads. The first cabin to port is your VIP cabin with double berth. This cabin features teak wall coverings, flat screen TV, 2 port lights, deck hatch, reading lights, hanging locker, abundant storage, and enclosed electric head with hand shower faucet. Across to starboard is the 2nd Guest Cabin with over under single berths. This cabin also features deck hatch, hanging locker, flat screen TV, and reading lights. Aft of that cabin is the Day Head with electric toilet and separate stall shower. All the way forward is the 3rd Guest Cabin with over

under single berths. As with all the cabins, there are teak wall coverings throughout, lots of storage, deck hatch, two port lights and access to the chain locker. The 3rd Guest Head has a manual toilet so there is always an operational head without any power needed.

The aft companionway provides access to the laundry/work room, engine room, and Master Stateroom. The Work Room includes the clothes washer, deep freezer, sink, tool box, work counter, A/C distribution panel and storage shelves. An access door to the well lit engine room makes maintenance easy. The dependable 3208 CATs are easily accessed along with all machinery, electrical, fuel and plumbing.

The Master Stateroom all the way aft has a raised island queen berth. There are two huge hanging lockers at the front of the cabin. A vanity with mirrors makes preparing for an evening out easy. The large enclosed head has a shower stall large enough for the entire crew. Appointments include large deck hatch, teak wall coverings, new cabin sole, flat screen TV, 4 port holes and accent lighting.

Galley & Laundry

- Double stainless steel sink
- Teak cabinets
- LG refrigerator/freezer
- Frigidaire microwave oven
- (7) cabinets
- Premium 4 burner gas stove top
- (4) drawers
- (3) A/C outlets
- Tecnogas gas oven
- Dometic ice maker below sink
- Plate & coffee mug rack
- Dome & accent lights
- Plates, pots, pans, linens included

Electronics & Navigation

- Standard Horizon VHF - upper helm
- 6" Plastimo compass - upper helm
- (2) Clarion 6" aft deck speakers
- (2) Clarion aft deck tweeters
- Raytheon VHF radio pilothouse
- Simrad depth sounder
- Simrad radar
- New Garmin 6208 chart plotter
- Robertson AP20 autopilot

- Sirius SAT radio
- Sony AM/FM/CD player - pilothouse
- 6" compass - pilothouse

Electrical Equipment

- 18 kw Northern Lights generator
- 50 amp shore power cord
- (2) 50 amp shore power receptacles
- Heart interphase 3000 watt
- (2) 4D batteries
- (6) DC400 deep cycle maintenance free batteries
- (5) battery switches
- Battery isolators
- DC distribution panel - pilothouse
- A/C & D/C distribution panels at engine room access
- A/C & D/C volt & amp gauges

Deck Equipment

- 2010 Rigid hull tender w/ 20 hp 4 stroke Honda
- (2) new Lebroc helm chairs
- Aft deck shade cover
- (2) large bow hawse pipes
- (2) huge naval style anchors deployed through hull
- Lofrans double capstan windlass with vertical line handling winch
- 300' chain Rode x 2
- (2) anchor rode locking clamps
- (2) 15" bow cleats
- Varnished cap rail
- Teak decks
- (3) large forward Bomar deck hatches
- Stainless steel bow & side deck hand rails w/ stainless steel safety cable
- Small forward deck hatch
- (4) midship 15" cleats
- (4) midship hawse pipes
- (2) deck storage lockers below mast
- (2) large Bomar hatches
- Midship raised deck
- Covers for all Bomar hatches
- 8 person life raft
- Forward deck flood lights

- Dual trumpet air horns
- Pilothouse window sunscreens
- Varnished teak accent around deck house
- Port & starboard teak hand rail midship
- Bimini top
- Stainless steel ships helm wheel with grip wrapping cover
- Raised helm deck
- Aft deck teak table with stainless pedestal
- Aft deck u shaped settee with removable cushions & storage underneath
- Aft deck aluminum lazarett hatch
- Removable swim boarding ladder
- Horseshoe life ring on aft deck rail bracket
- Phone & TV receptacle
- (2) midship & (2) aft deck boarding gates
- All new window & window frames - deck house & pilothouse
- Aft deck Bomar hatch to M.S. cabin
- Aft deck LPG locker for 2 tanks
- Aft deck light prism
- Transom teak flag burgey pole
- Man overboard marker flag
- Aft deck fresh water wash down hose
- (3) aft deck storage lockers with varnished doors
- Teak pilothouse entrance door
- Varnished cap rail forward of raised helm
- Varnished toe rail with stainless rub rail insert
- Stainless steel helm deck hand rail

Sails & Rigging

- Hood aluminum mast & boom
- Barient #23 winch on mast
- Barient #27 winch on mast
- (2) Pro Furl Roler Furlings
- (2) Meissner 30sts3 winches - helm
- Trident line tender
- Hood aft mast & boom
- (2) Barient #19 winches aft mast
- (2) Barient #36 electric winches aft
- (2) Barient #27 electric winches aft
- Jib
- Staysil
- Main
- (2) roller furlings

Mechanical

- Bilge blower
- (3) automatic bilge pumps
- Engine alarm
- Electric heads with Electrasan units
- (4) Marine Air units reverse cycle
- Morse clutch & throttle controls
- Faria & VDO gauges
- Dual Racors with vacuum gauges on mains
- Single Racor on generator
- Emergency engine driven bilge pump
- Aquawisper watermaker
- Heat & acoustical insulator
- Large spare parts inventory
- High water alarm

Other Features

- Fresh paint in 2011
- New rigging by Nance & Underwood
- New chain plates forward
- Life raft serviced 2012
- Rebuilt hydraulic steering
- New sails & roller furlings
- New dock lines & fenders
- All winches serviced 2012
- New helm chairs
- All hatches & windows replaced in 2011
- New Garmin chart plotter with depth finder
- New water pump & filters
- All new headliner with recessed lighting
- New stainless steel water heater
- New gas stove & microwave oven
- New electric toilets with Electrosan treatment
- New deep freezer
- New Racors with vacuum gauges
- New oil changing system

Exclusions

Owner's personal effects.

Исключения

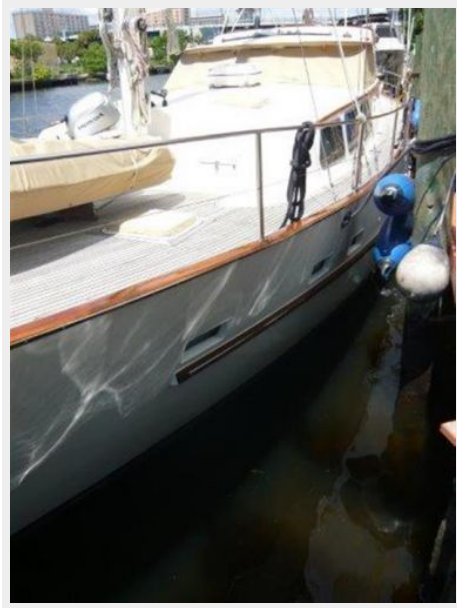
При продаже яхты исключаются личные вещи владельца.

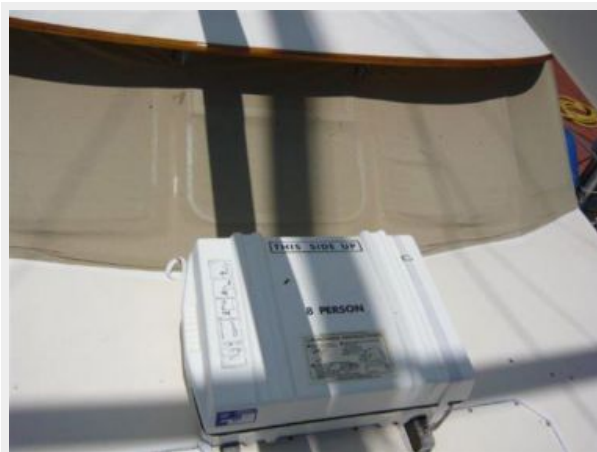
Отказ от ответственности

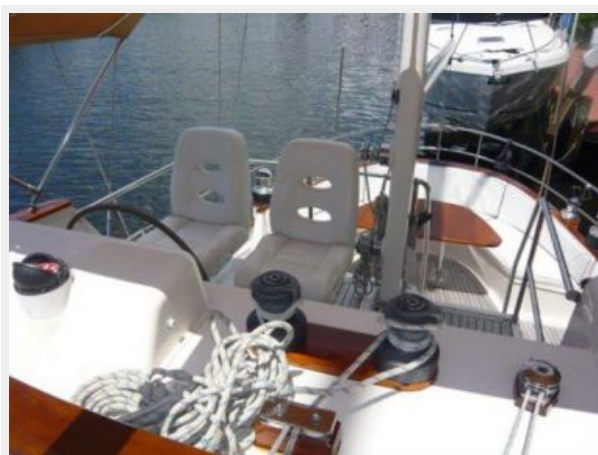
Компания предоставляет описание судна или яхты добросовестно, но не может гарантировать точность этой информации, а также не ручается за техническое состояние. Покупатель должен проинструктировать своих агентов или оценщиков исследовать представленную информацию более подробно, по собственному желанию. Продажа судна или яхты, изменение цены или снятие с продажи будет происходить без предварительного уведомления.

ФОТОГРАФИИ











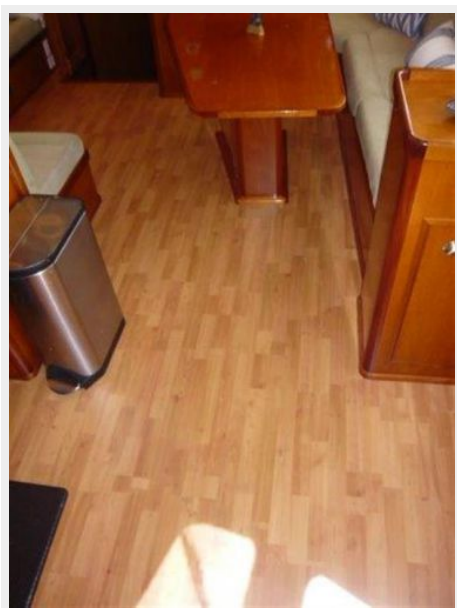






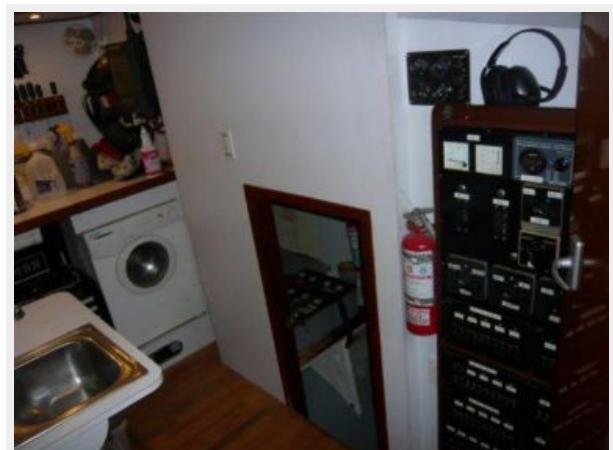


















КОНТАКТЫ

Андрей Шестаков (Andrey Shestakov) – ведущий яхтенный брокер отдела продаж яхт и судов компании Shestakov Yacht Sales Inc. Официальный представитель Shestakov Yacht Sales Inc. для русскоговорящих клиентов в центральном офисе компании в Майами/Форт Лодердейл/Флорида/США.

Контактная информация

Email: andrey@shestakovyachtsales.com

Web: shestakovyachtsales.com

Телефоны

Краснодарский край: **+7(918)465-66-44**

США, Майами, Флорида: **+1(954)274-4435**

Время работы

Понедельник – Суббота: **9:00 - 21:00**
EDT

Воскресенье: **Закрито**

Адрес



Harbour Towne Marina, 850 NE 3rd St,
STE 213, Dania, FL 33004