

NAUTI LASS — HATTERAS



Builder: HATTERAS

LOA: 78' 0" (23.77m)

Year Built: 1990

Beam: 18' 2" (5.54m)

Model: Motor Yacht

Price: PRICE ON APPLICATION

Location: United States

Our experienced yacht broker, Andrey Shestakov, will help you choose and buy a yacht that best suits your needs **Nauti Lass — HATTERAS** from our catalogue. Presently, at Shestakov Yacht Sales Inc., we have a wide variety of yachts available on our sale's list. We also work in close contact with all the big yacht manufacturers from all over the world.

If you would like to buy a yacht **Nauti Lass — HATTERAS** or would like help answering any questions concerning purchasing, selling or chartering a yacht, please call **+1(954)274-4435**

TABLE OF CONTENTS

TABLE OF CONTENTS	2
SPECIFICATIONS	5
Overview	5
Basic Information	5
Dimensions	5
Speed, Capacities and Weight	5
Accommodations	6
Hull and Deck Information	6
Engine Information	6
DETAILED INFORMATION	7
Remarks	7
Layout and Accommodations	7
Salon	7
Galley	8
Pilothouse	9
Guest Cabins Forward	9
Master Stateroom & Office	9
Flybridge, Upper Helm & Boat Deck	10
Cockpit & Aft Deck	11
Hull, Deck & Construction	11
Engine Room & Mechanical	12
Electrical & Generator Room	13
Disclaimer	13
Exclusions	14
Disclaimer	14
PHOTOS	15
Bridge	15
Salon	15

Engine Room	15
Salon Looking Aft	15
Salon 2	15
Salon 3	15
Formal Dining	16
Galley	16
Galley 2	17
Pilothouse 2	17
Pilothouse	17
Pilothouse 3	17
Stairs to Flybridge	18
Lower Helm	18
Master Stateroom	18
Master Stateroom 2	18
Master Head	19
Master Stateroom 3	19
Master Walk-In Closet	19
Office	19
Companionway to Office	20
Engine Room Port	20
Forward Stateroom	20
Engine Room Starboard	20
Forward Head	21
Guest Stateroom	21
Guest Stateroom Berth	21
Guest Head	21
Laundry	22
VIP Stateroom	22
VIP Head	22

Flybridge Bar and Seating	22
Flybrdge Wetbar	23
Upper Helm	23
Upper Helm at Night	23
Upper Helm 2	23
Novurania Tender Console	24
New Nouvarania Tender	24
NEW UMT Davit	24
Cockpit	24
Aft Deck	25
Transom	25
Night Profile	25
Night Profile 2	25
CONTACTS	26
Contact details	26
Telephones	26
Office hours	26
Address	26

SPECIFICATIONS

Overview

"Nauti-Lass" is an incredibly special motoryacht that has seen numerous updates and customizations while being owned and maintained by a knowledgeable owner. "Nauti-Lass" has seen an extensive refit and continual improvements including over one million (\$1M) spent in 2001 providing her with a **euro style cockpit and transom, fresh bright white paint, a bow thruster and more.** She is **stabilized, has a hardtop, new Novurania tender, new UMT davit, updated Garmin Touchscreen Chartplotters and Garmin Radar, new TracVision KVH4 SAT TV, watermaker, etc.** and is a must see in terms of condition. With **four staterooms, an office and five heads** she offers a huge layout and features a **full beam walk in engine room.**

A pleasure to show and always professionally maintained! Check out this exquisite yacht!

Basic Information

Category: Motor Yacht

Model Year: 1990

Year Built: 1990

Refit Year: 2001

Country: United States

Fly Bridge: Yes

Cockpit: Yes

Dimensions

LOA: 78' 0" (23.77m)

Beam: 18' 2" (5.54m)

Speed, Capacities and Weight

Displacement: 120000 Pounds

Water Capacity: 275 Gallons

Fuel Capacity: 1995 Gallons

Accommodations

Total Cabins: 4

Total Heads: 5

Hull and Deck Information

Hull Material: Fiberglass

Engine Information

Engines: 2

Manufacturer: Detroit Diesel

Model: 12v71TI

Engine Type: Inboard

Fuel Type: Diesel

DETAILED INFORMATION

Remarks

Nauti-Lass" is a very special Hatteras Motoryacht that started life as a 1990 70' full motoryacht with the VIP layout (**4 staterooms and private office**) along with a full beam engine room. In 2000/2001 she went through an extensive refit (over \$1M) and extension. The boat received a new interior, fresh bright white paint and a euro style transom designed by Hargrave making her appear as a much later model MY and increasing the ease of use for watersports, entertaining and line handling/boarding. In the past few years the current owner has continued with updating the boat to the tune of over \$200,000 and she shows incredibly well!

Layout and Accommodations

Nauti-Lass" is easily boarded either from the swim platform that leads into the euro style transom and cockpit or from her custom UMT carbon fiber tide ride stairway (\$13k) that can lead to either the starboard or port side pilothouse doors. The cockpit, aft deck and flybridge have all had synthetic teak decking added giving an easy to maintain finish while providing a nice elegant contrast to the bright white paint. The cockpit opens to the swim platform with a one step break along with custom hoop rails, the middle one being removable. Extensive storage is found under the cockpit sole as well as in a cockpit cabinet which houses an additional refrigerator and freezer. To starboard a curved stairway leads to the aft deck and lighting updates include LED courtesy lighting, underwater lighting and back-lit ship's name on the transom and bridge sides. Entering the salon from the aft deck one will be greeted by a bright and classy interior with abundant living space. The headliner, lighting, soft goods, wall covering, and veneers have all been updated along with the galley and many ship's systems including the air conditioning and heating. The solid bulkhead that once separated the salon from the dinette area has been opened up with a custom half wall providing an even more spacious feel to the salon and galley which allows for an easy and bright flow between these areas. A pilothouse lower helm provides protected operation in all sea states and weather and a custom stairway leads to the upper helm and huge flybridge and boat deck. Below one will find four staterooms and five heads including a powder room in the office. Three of the guest cabins are accessed forward all with their own heads and showers and there is a very large VIP Stateroom midship that would rival most boat's master. Privacy is provided to the Master Stateroom with its own companionway leading down from the salon. The Master Stateroom is full beam aft with a large head and walk in closet. The office sits just forward of the Master providing extra convenience to the owner.

Salon

Nauti-Lass" features an abundantly spacious salon that like the entire boat has seen numerous updates including lighting, soft goods, headliners, switches, and air conditioning controls. The once solid bulkhead leading from the salon into the galley/dinette area has been opened up and

gives an increased feel of spaciousness and flow amongst these areas. The salon is great for entertaining with an oversized sectional sofa and barrel chairs as well as a formal dining area. A built in wetbar with Scotsman ice maker and glass storage is forward as is the entertainment center. To the starboard side of the salon there is a Lucite surround with granite top that surrounds the stairway leading to the lower deck and Master Stateroom. This surround flows into the salon nicely and actually provides extra bar space with stools.

- Large L-shaped leather sofa w/ recliner
- Two matching leather chairs
- Matching coffee, end and dining tables
- Four dining chairs
- Custom overhead lighting
- Two swivel bar chairs
- Custom granite and Lucite bar
- Custom valances and silhouette blinds
- Salon wet bar with Scotsman ice machine, gold colored sink and faucet, glass and bottle rack with mirrored back and light
- Sony TV with KVH TracVision SAT TV (July 2014)
- GC Speaker Control
- Denon CD Changer
- Denon Receiver
- Updated neutral carpet

Galley

The galley has also seen numerous updates from flooring to the headliner and everything in between. Stainless steel full size appliances, Corian countertops and large dinette with Corian table make this galley a chef's delight.

- Pergo wood floor
- Sharp LCD TV
- Corian countertops and backsplash
- Stainless Steel trash compactor
- Full size dishwasher
- GE Profile Microwave Convection Oven
- GE Profile Oven
- GE glass top Stove
- Stainless Steel Double Door Refrigerator
- Double Sink with Faucet
- Custom Blinds
- Neutral leather covered dinette
- Dual pedestal Corian dinette table

Pilothouse

The pilothouse benefits from upgraded aluminum port and starboard side doors and has a custom staircase to the flybridge with wood steps, burlled sides and LED courtesy lights. The entire electronics console was custom built and features an updated Garmin display with chartplotter, sounder and radar. A redundant Furuno radar provides extra margin for safety.

- Pergo wood flooring
- Custom staircase to the flybridge with storage below
- Helm seat (which was just recovered) provides storage drawers and chart storage below
- Robertson Autopilot
- Furuno 72 mile radar
- **Garmin 7215 Display with Color Chartplotter, Color Sounder and Color HD Radar**
- Bow Thruster Control
- Naiad Stabilizer Controls
- Hatteras Systems Monitor with lights and audible alarm
- Hynautic Throttle and Gear Controls
- Remote Search/Spot Light
- Trim Tabs
- Fuel Gauge System
- Datamarine speed/depth/temp
- Three windshield wipers with washers
- Windshield Cover
- Custom faux Burlwood finish for ease of maintenance and good looks
- Blue and White LED Overhead Lighting
- Custom LED lighting for artwork over pilothouse seat

Guest Cabins Forward

The guest cabins are accessed forward of the pilothouse and have their own companionway. The bow stateroom which can be used for guest or crew is a set of bunks and features its own head with stall shower. The second guest stateroom is to port and has two wide twin berths and a head across the hall with its own stall shower. Mid ship is the third or VIP stateroom with a walkaround queen berth and private head and shower.

- Flat screen TV in VIP and Guest
- Heads have mirrored overheads, updated flooring and **freshwater** toilets
- Hanging lockers are cedar lined
- Updated neutral carpeting and softgoods throughout

Master Stateroom & Office

The owners stateroom and office are accessed via a private stairway and companionway aft from

the salon. The companionway offers additional storage cabinets and also access to the full beam engine room. As you reach the landing of the stairway you instantly notice a custom oval window with etched glass that looks into the office and provides natural light to this room from two sides. The office has a "L" shape wrap around work station with plenty of room for computers, printers, and tablets. The office also has its own powder room providing an extra head in the owners area.

The master stateroom itself is full beam and aft featuring maximum privacy and a bright and spacious feel. Built in dressers are both port and starboard and the king size berth with custom mattress has plenty of room to walk around. A walk-in closet is cedar lined and the head is extremely large with mirrored overhead and shower/ jacuzzi tub.

- Updated floors, counters, carpeting and lighting
- Updated sanitation hoses and toilets
- Jacuzzi tub and shower
- TV and Entertainment Center
- Vanity with make up area
- Custom shades and valances

Flybridge, Upper Helm & Boat Deck

The flybridge is accessed by the stairway from the pilothouse and features numerous custom features. The entire upper helm console was replaced with a custom unit, fiberglass hardtop and enclosure added, key hole bar with stools, sink and refrigerator added and a walk through to the boat deck created. This area has seating for a party and the Corian topped bar is convenient and good looking.

- **Custom fiberglass hardtop** with lighting and three sided enclosure
- Custom electronics mast
- Oversize helm and companion seat
- **Keyhole bar with sink, refrigerator, Corian top, and 2 mounted stools.**
- **Synthetic teak decking**
- Circular leafed cocktail table
- Outdoor speakers
- Custom seating, bar and table covers
- Abundant storage under seats
- **New UMT hydraulic davit with push button lift, rotation, and cable and wireless remote (\$40k)**
- Avon canister life raft (un-certified)
- **Novurania DL430 14' RIB tender with 60hp Yamaha Four Stroke OB (new in 2011, \$25k)**
- Custom tender bridle
- Tender Cover
- Tender has Raymarine VHF, Stereo, Yamaha digital gauges and depthfinder

- Custom Upper Helm Console
- **Garmin 7215 Display with Color Chartplotter, Color Sounder, Color HD Radar**
- (2) Icom VHF radios
- AM/FM/CD stereo
- Robertson Autopilot
- Rudder Indicator
- Hynautic Gear and Throttles
- Bow Thruster Control
- Naiad Stabilizer Control
- ACR Spotlight Control
- Compass
- VDO Analog Gauges

Cockpit & Aft Deck

Like the flybridge the aft deck and cockpit benefit from synthetic teak decking. The aft deck features a teak table and chair set, overhead lighting and a spreader light. A few steps down the curved stairway there is a large cockpit with a euro transom leading to the swim platform. The cockpit provides room for additional refrigeration, freezer and storage space and makes boarding and line handling much easier than this yacht's original configuration. The cockpit is large enough to host its own party and again was a fabulous and functional addition to this boat.

- Fresh water washdown
- Open transom with hoop rails (rails are removable for boarding directly astern or watersports)
- Underwater lights
- LED courtesy lighting
- LED backlit ships name
- Aft stateroom escape hatch
- Custom fiberglass cabinet with refrigerator and freezer
- Synthetic teak decking
- Swim Ladder
- Teak flagstaff and socket yacht ensign
- Large lazarette storage area which includes:
 - 2 spare four blade props
 - Spare Danforth anchor
- Bilge Pump
- 400 gallon aluminum fuel tank which provides increased range

Hull, Deck & Construction

The entire boat was repainted in bright white Awlarip in 2000/2001. This waterline up.

The engine room was repaired in eight time during in 2002/2003. The machine up, hardware off paint job is fabulous and has been professionally maintained in a like new state. The teak handrails of this era Hatteras were also replaced with stainless steel eliminating any exterior wood making the boat easier on maintenance and more modern in appearance.

The foredeck provides an additional exterior area with a huge sunpad and bench seating along with seating on top of the two fiberglass dunnage boxes. A great area to relax and work on the tan or enjoy a glass of wine with a sunset off the bow.

- Fiberglass bow pulpit with anchor roller
- 80# Polished Stainless Plow anchor with 300' chain
- Galley Maid anchor windlass w/wildcat and capstan
- Deck foot switches for windlass up/down
- Bow seat with cushions and storage locker
- Fiberglass dunnage boxes
- Sun lounge with pad
- Spray rails
- 3 ram trim tabs
- **Naiad stabilizers (Recently Serviced)**
- **Bow thruster**
- **UMT Carbon Fiber Tide Ride Folding Stairway**
- Vertical boarding ladder
- Adjustable Fender cars/tracks
- Shore side water hook up

Engine Room & Mechanical

An immaculate, bright and roomy engine room with numerous updates, chrome package, Airseps, blue silicon hoses and more. Full beam with room to get all around the 12v71 TI's with 1625 hours!

- **Naiad model 254 stabilizers**
- 12V71's with chrome kits and Air Seps
- Engine block heaters
- Stainless steel exhaust risers
- Engine synchronizer
- Leese Neville direct drive alternators (100amp)
- Racor double fuel filters (180gph cap)
- 2.5:1 ZF gears
- Engine drip pans trapped
- 3" Stainless steel shafts
- Engine hour meters
- 4 racor fuel filters
- 4 vapor proof battery cut-off switches

- Walker Engineering AirSep engine intake system
- Air compressor
- Oil change system on mains and gen set
- 2 A/C raw water circulation pumps with sea strainers
- 75# Co2 cylinder
- Fresh water spigot with hose
- Oil change manifold
- Fire alarm sensor
- 2 10# fire extinguishers
- 2 circulating fans
- DC ships #2 panel
- Fuel transfer pump
- AC & DC engine room lighting
- Mechanical engine gauges

Electrical & Generator Room

Located forward and separate from the engine room is a generator and utility room:

- **All batteries replaced with sealed and service free replacements in July 2014**
- **24 Volt DC System**
- (2) 20KW Onan Generators in sound shields
- Racor fuel filters for generators
- 2 automatic battery chargers
- 2 powerformer transformers
- Fiberglass muffler for each generator
- 5 head diverter valves
- 35# CO2 cylinder
- Racor fuel filters for each gen set
- Fire alarm
- Fresh water spigot and hose
- 8 Cruisair A/C units
- Fiberglass holding tank
- Bow thruster batteries 2-12 volt, charger and fuses
- 50 AMP 240 VT Cablemaster electric cord reels port and stbd
- 50 AMP 125/250 shore power connect w/cords port and stbd
- 50 AMP 125VT shore power connections w/cords port and stbd
- Telephone & TV connections port and stbd

Disclaimer

While we attempt to display current and accurate data, this listing may not reflect the most recent transactions or may contain occasional data entry errors. Selling agent makes no warranties,

express or implied, regarding the content or availability of the products described herein. All inventory listed is subject to availability and prior sale. Please consult selling agent for details. Prices are quoted for the USA only and may not include transportation, taxes, or other applicable charges. Photographs may be representative only and may vary somewhat from the actual items offered for sale. We will not be responsible for inaccurate data obtained from our site. Please check with your local dealer to ensure that you have the latest information available. Information on this web site could include technical inaccuracies or typographical errors. Changes may be periodically made to the information or the products herein. Questions or comments regarding these policies may be directed to website hosting agent.

Exclusions

Owner's personal belongings.

Disclaimer

The Company offers the details of this vessel or yacht in good faith but cannot guarantee or warrant the accuracy of this information nor warrant the condition of the vessel. A buyer should instruct his representatives, agents, or his surveyors, to investigate such details as the buyer desires validated. This vessel or yacht is offered subject to prior sale, price change, or withdrawal without notice.

PHOTOS

Bridge



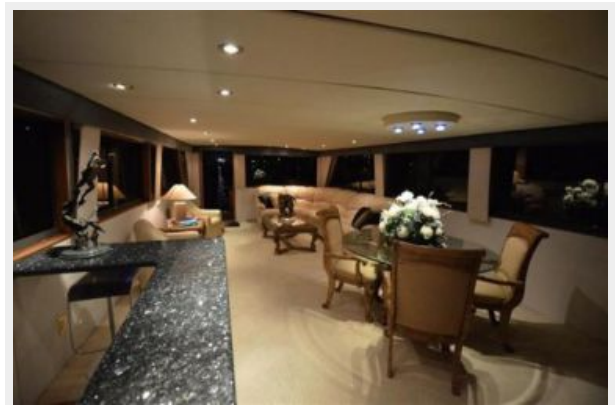
Salon



Engine Room



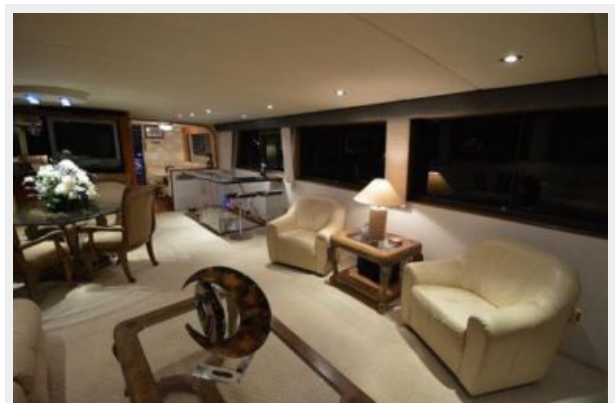
Salon Looking Aft



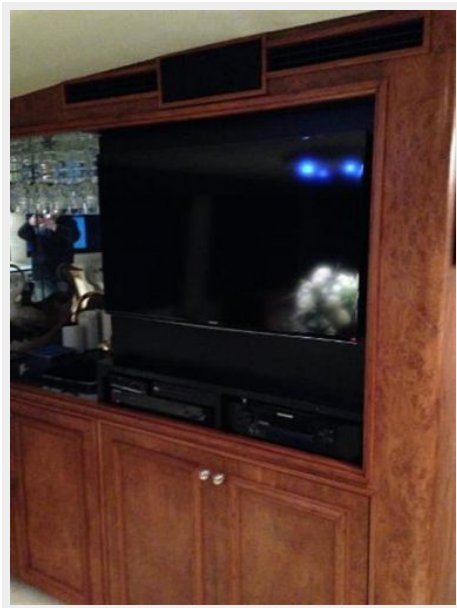
Salon 2



Salon 3



Formal Dining



Galley



Galley 2



Pilothouse 2



Pilothouse



Pilothouse 3



Lower Helm



Stairs to Flybridge



Master Stateroom



Master Stateroom 2



Master Stateroom 3



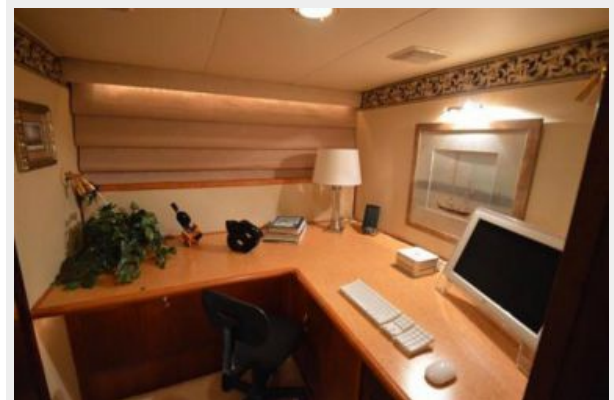
Master Head



Master Walk-In Closet



Office



Companionway to Office



Engine Room Port



Forward Stateroom



Engine Room Starboard



Forward Head



Guest Stateroom



Guest Stateroom Berth



Guest Head



Laundry



VIP Stateroom



VIP Head



Flybridge Bar and Seating



Flybridge Wetbar



Upper Helm



Upper Helm at Night



Upper Helm 2



New Nouvarania Tender



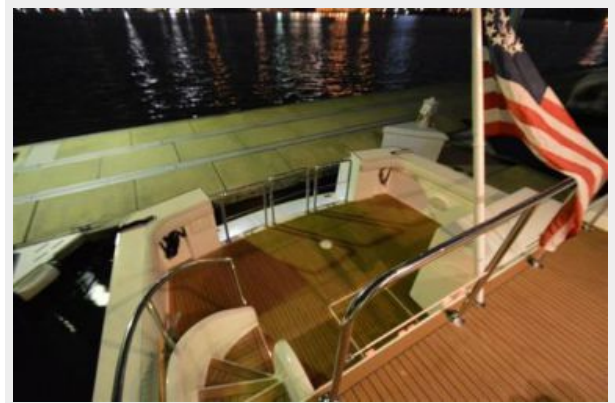
Novurania Tender Console



NEW UMT Davit



Cockpit



Aft Deck



Transom



Night Profile



Night Profile 2



CONTACTS

Andrey Shestakov, leading yacht broker of the sales department of Shestakov Yacht Sales Inc. Shestakov Yacht Sales Inc., the official representative of the Miami/Fort Lauderdale FL headquarters.

Contact details

Email: andrey@shestakovyachtsales.com

Web: shestakovyachtsales.com/en/

Telephones

USA: +1(954)274-4435

Office hours

Monday – Saturday: **9:00 - 21:00** EDT

Sunday: **closed**

Address



Harbour Towne Marina, 850 NE 3rd St,
STE 213, Dania, FL 33004