

NEPTUNE STAR — PASSPORT YACHTS



Судостроитель: PASSPORT YACHTS

Год постройки: 2008

Модель: Крейсерская яхта

Цена: ЦЕНА ЯХТЫ ПО ЗАПРОСУ

Местонахождение: United States

Длина общая: 51' 6" (15.70m)

Ширина: 15' 2" (4.62m)

Мин. осадка: 6' 0" (1.83m)

Купить **NEPTUNE STAR — PASSPORT YACHTS** а также выбрать подходящую вам яхту из нашего каталога яхт вам поможет опытный яхтенный брокер Андрей Шестаков. На сегодняшний день компания **Shestakov Yacht Sales Inc.** имеет большое количество яхт в собственном списке продаж, а также тесно сотрудничает со всеми крупными яхтенными производителями по всему миру.

Для того чтобы купить яхту **NEPTUNE STAR — PASSPORT YACHTS** а также проконсультироваться по любому вопросу связанному с покупкой, продажей, чартером яхт позвоните по телефону **+7(918)465-66-44**.

ОГЛАВЛЕНИЕ

ОГЛАВЛЕНИЕ	2
ХАРАКТЕРИСТИКИ	4
Обзор	4
Основная информация	4
Размеры	4
Скорость, вместимость и масса	4
Размещение	5
Корпус и палуба	5
Информация о двигателе	5
ПОДРОБНОЕ ОПИСАНИЕ	6
INTRODUCTION	6
LAYOUT and ACCOMMODATIONS	6
GALLEY	7
ENTERTAINMENT EQUIPMENT	7
ELECTRICAL SYSTEM	7
NAVIGATION AND COMMUNICATION EQUIPMENT	8
ENGINE and MECHANICAL EQUIPMENT	8
PLUMBING	9
SAILS & RIGGING	9
CANVAS	10
HULL and DECK	10
ADDITIONAL EQUIPMENT	11
EXCLUSIONS	11
Исключения	11
Отказ от ответственности	12
ФОТОГРАФИИ	13
Navigation station	13
Layout	13

Salon	13
Dinette	13
Companionway	13
Galley Walk-through	13
Galley Walk-through 2	14
Master Stateroom	14
Guest Stateroom	14
Cockpit	14
Helm	15
Cockpit Table Extended	15
Deck	15
Dodger	15
ICW-Friendly Rig	15
КОНТАКТЫ	16
Контактная информация	16
Телефоны	16
Время работы	16
Адрес	16

ХАРАКТЕРИСТИКИ

Обзор

NEPTUNE STAR is a spectacular, nearly new offshore cruising boat that also has an ICW friendly rig and is shoal draft. Her interior is large, warm and comfortable with generous accommodations for two couples. Storage is voluminous bespeaking her cruising pedigree. She was equipped and outfitted with the finest available, without reservation, and knowledgeably updated. If you are interested in a supremely capable, bluewater yacht of unparalleled quality, please give NEPTUNE STAR serious consideration.

Основная информация

Тип судна: Крейсерская яхта

Подкатегория: Center Cockpit

Модельный год: 2008

Год постройки: 2008

Страна: United States

Верх: Dodger

Размеры

Длина общая: 51' 6" (15.70m)

Длина по ватерлинии: 44' 0" (13.41m)

Ширина: 15' 2" (4.62m)

Мин. осадка: 6' 0" (1.83m)

Трапы: 61' 6" (18.75m)

Длина привального бруса: 51' 6"
(15.70m)

Скорость, вместимость и масса

Водоизмещение: 39000 Pounds

Вместимость воды: 250 Gallons

Вместимость сточного бака: 60 Gallons

Объем топливного бака: 250 Gallons

Размещение

Всего кают: 2

Всего коек: 2

Спальные места: 6

Всего ком. состава: 2

Корпус и палуба

Материал корпуса: Fiberglass

Цвет корпуса: White

Дизайнер корпуса: Passport Yachts

Информация о двигателе

Двигатели: 1

Производитель: Yanmar

Модель: 4JH4HTE

Тип двигателя: Inboard

Тип топлива: Diesel

ПОДРОБНОЕ ОПИСАНИЕ

INTRODUCTION

NEPTUNE STAR is a fine example of Passports' long-range cruising technology. Her interior is large, warm and comfortable with generous accommodations for up to six. Storage is voluminous, bespeaking her cruising pedigree. No expense was spared when equipping and outfitting this yacht. If you are interested in a bluewater yacht of unparalleled quality, please call or email for further details.

LAYOUT and ACCOMMODATIONS

Wonderfully-thought-out interior flows from bow to stern. With features like a full walk-around to the aft cabin through the galley and walk-through navigation center, movement throughout the boat is unhindered. The starboard settee converts to easy chairs with cocktail table. The dinette can be converted to a queen berth. Two large and very private staterooms, each with ensuite head and separate shower stall. The navigation station is conveniently located to starboard of the companionway ladder. Beautiful Corian counter tops in the galley and in each head and entertainment area display the feeling of luxury along with custom faucets and Ultraleather upholstery. The solid teak doors, louvered lockers and teak and holly cabin sole reflect the quality of workmanship that went into her construction.

Features:

- Two-stateroom, two-head layout, each with separate shower stall
- Double walk-throughs to aft cabin
- Teak dining table with custom inlay
- Filler and cushions for dining table conversion to double berth
- Removable cocktail table for starboard settee
- Glass-fronted lighted crystal locker
- Wine and liquor locker
- Custom-colored Corian counter tops in galley, washrooms and entertainment areas
- Louvered locker doors
- Locking floor boards
- (20) Opening ports with screens
- Mesh covers for saloon windows (new, 2012)
- (5) Teak-framed deck hatches with screens
- Curved companionway steps
- Fold-up headboard on aft berth
- Tecma electric fresh and salt water flush toilets

GALLEY

- Double stainless steel sinks with Corian covers
- Grohe faucets
- Corian counter tops
- Force 10 3-burner stove with oven and broiler
- Frigoboat refrigerator and freezer with digital controls and smart speed controls
- Microwave oven
- Stove top cutting boards
- Filtered water system
- Icemaker with filtered water
- Fresh water and salt water foot pumps
- Two large pantries
- Numerous lockers and drawers
- Trash compactor

ENTERTAINMENT EQUIPMENT

- 32" flat Screen TV with DVD player in main salon
- 19" flat Screen TV with DVD in owner's stateroom
- Stereo with CD player and speakers in main cabin, with (2) additional speakers in master stateroom, MP3 compatible
- (2) Cockpit speakers
- Raymarine 45 satellite TV antenna with (2) tuners

ELECTRICAL SYSTEM

- (4) 4D AGM batteries (2014)
- (3) Group 31 AGM batteries (2013)
- Mase 8KW 1,800 rpm 120VAC/60Hz diesel generator (1,100 hours)
- Xantrex battery monitor
- 110 Volt shore power system with 50/250 Amp service
- Dual battery selector switch
- Victron 3000 sine wave inverter/100 amp charger
- Custom lighting plan with Cantalupi stainless steel halogen and LED lighting
- Night light entry system
- Interior courtesy lights
- Blue LED courtesy lights in cockpit
- Engine room and lazarette lights
- Blue Seas eight-position waterproof switch panel in aft starboard cockpit compartment for all nav and courtesy lights

- Binnacle-mounted cockpit light
- Remote controlled light fixture mounted on wind generator pole that illuminates the aft deck area and boarding ladder
- (2) 12 Volt plugs, one in cockpit and one at nav station
- Galvanic isolator
- Newmar ES5 and ES6 electrical panels at nav station
- (6) Hella Fan

NAVIGATION AND COMMUNICATION EQUIPMENT

- Raymarine ST60 depth, wind and speed Instruments
- Raymarine E80 at nav station
- Raymarine Type III hydraulic linear autopilot with controls in nav pod on binnacle
- Icom M504 VHF radio with RAM mic in cockpit
- Raytheon E120 color radar/plotter in nav pod at helm with WAAS antenna and 4 Kw dome mounted on mast
- Raymarine AIS receiver
- ST-60 graphic display at nav station
- 2nd autopilot control head at nav station
- Sirius marine weather receiver interfaced w/E120 & E80
- 406 EPIRB in bracket
- Computer jack at nav station
- Raymarine 45STV HD satellite TV system
- LED mast head tricolor/anchor light
- Aquamarine bow and stern light
- Icom 802 SSB with A140 tuner and speaker
- Weatherfax modem interfaced with SSB
- Raymarine Lifetag system
- Printer for computer

ENGINE and MECHANICAL EQUIPMENT

- Yanmar, Model 4JH4HTE diesel 110 hp engine, 2008.
- 22" 4-blade Max folding propeller (2014)
- 22" spare Gori propeller
- Shaft Shark line cutter
- Sidepower bow thruster
- Balmar 100 Amp alternator with 3-stage regulator
- Victron 3000 Watt inverter with 100 Amp charger
- Racor 75500 Max 2 dual fuel filter system
- Edson dual-lever steering system

- Splendide WD2000S vented washer/dryer
- Fireboy engine room fire extinguishing system
- Fuel and water gauges
- Holding tank gauges
- 16,000, 10,000 and 7,000 BTU (2014) self-contained reverse-cycle heat/AC systems

PLUMBING

- (2) Stainless steel water tanks with baffles
- 11-gallon hot water heater (110 volt and engine driven)
- Spectra Newport 400 gallon a day watermaker
- Hot and cold pressure water system
- Shurflo self-priming fresh water pump
- Tecma electric toilets (salt & fresh water flush)
- Holding tank and piping for waste disposal in each head
- Transom-mounted hot & cold pressure water shower
- Salt & fresh water deck wash systems
- Three-way panel lighted switch for forward lazarette bilge pump system
- GE filtered water at galley
- Emergency bilge pump alarm
- Rule 3700 and Rule 2000 electric bilge pumps with automatic float switches
- Manual bilge pump

SAILS & RIGGING

Rigging:

- Selden powder-coated mast and boom with in-mast furling system and triple spreaders, ICW compatible
- (3) Sets of spreader lights
- Internal boom preventer
- In-boom roller preventer
- Selden solid vang
- Selden hard vang
- Twin Furlex headstays
- Furlex 400 roller furler for 130% Genoa
- Furlex 300 roller furler for working jib
- Staysail package: Removable inner forestay with Hyfield lever stowage
- Outboard genoa tracks with cars
- (6) Halyards / one spare
- Spinnaker Pole
- Spinnaker gear for on-mast pole storage

- Split backstay
- Backstay insulators
- Pole topping lift
- Harken tracks with Harken blocks and cars
- Harken towing cars on genoa tracks

Sails:

- Doyle roller furling main (2011) Note: Sail area increased to promote greater offshore performance
- Quantum roller furling working jib for inner furler
- Quantum roller furling 130% genoa for outer furler
- Quantum V3ASY spinnaker with graphics
- Custom storm jib rigging package including storm Jib

Winches:

- (2) Harken 72 STC electric two-speed self-tailing primary winches
- Harken 44 two-speed self-tailing mainsheet winch
- Harken 44 two-speed self-tailing utility winch
- Harken electric 44 two-speed self-tailing utility winch
- Harken 44 two-speed self-tailing halyard winches on mast

CANVAS

- Dodger with Strataglass, aft stainless steel rail and vertically-mounted side rails enable dodger to fold forward
- Bimini with sail window (2012)
- Connector for dodger and bimini
- Mesh covers for main saloon windows
- Full enclosure with storage bag
- Padded hatch covers
- Cockpit cushions (2010)

HULL and DECK

- Shoal draft (6')
- Teak eyebrow
- Teak cockpit sole
- Teak stern seats
- (4) Stainless steel ports in hull w/storm shutters
- Side power bow thruster

- Lighthouse 1501 electric windlass with reversing circuit and up/down buttons
- 80# Manson anchor with 250' 5/16" chain
- 66# Bruce anchor with 50' 5/16" chain and 200' 5/8" rode
- Dedicated stern anchor locker
- (5) Stainless steel dorades with guards
- Copper strapping in hull for SSB
- Teak caprail w/stainless steel striker and multiple coats of Flagship varnish
- Cockpit table
- Cockpit table light
- Teak companionway doors and Lexan drop boards
- Custom 316 stainless steel stern boarding ladder with teak steps and passerelle
- Custom sideboarding ladder
- Lightning defuser at masthead
- Fresh water and salt water deck washdown system
- Hot and cold water stern shower
- Kato outboard motor lift and motor mount
- Kato custom folding davits
- Outboard motor bracket and support
- Removable rail-mounted BBQ grill with custom attachment to 20 lb. LPG tank
- Custom stainless wind generator pole with AirBreeze wind generator with digital controls belowdeck
- Custom stainless pole for satellite TV antenna
- Marince Super Dynaplate
- Mast steps 3' down from top of mast
- Flag pole and flag

ADDITIONAL EQUIPMENT

- Winslow 6 man life raft
- MOM 8-man overboard system
- Clock and barometer
- Coast Guard safety package

EXCLUSIONS

The owner's personal effects are excluded from the sale.

Исключения

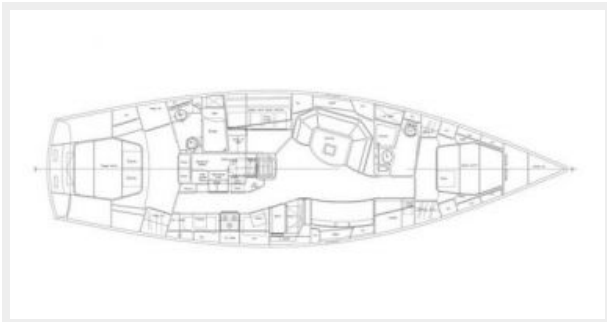
При продаже яхты исключаются личные вещи владельца.

Отказ от ответственности

Компания предоставляет описание судна или яхты добросовестно, но не может гарантировать точность этой информации, а также не ручается за техническое состояние. Покупатель должен проинструктировать своих агентов или оценщиков исследовать представленную информацию более подробно, по собственному желанию. Продажа судна или яхты, изменение цены или снятие с продажи будет происходить без предварительного уведомления.

ФОТОГРАФИИ

Layout



Navigation station



Salon



Dinette



Companionway



Galley Walk-through



Galley Walk-through 2



Master Stateroom



Guest Stateroom



Cockpit



Cockpit Table Extended



Helm



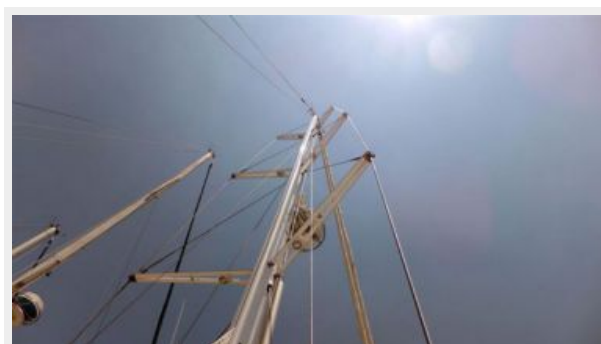
Deck



Dodger



ICW-Friendly Rig



КОНТАКТЫ

Андрей Шестаков (Andrey Shestakov) – ведущий яхтенный брокер отдела продаж яхт и судов компании Shestakov Yacht Sales Inc. Официальный представитель Shestakov Yacht Sales Inc. для русскоговорящих клиентов в центральном офисе компании в Майами/Форт Лодердейл/Флорида/США.

Контактная информация

Email: andrey@shestakovyachtsales.com

Web: shestakovyachtsales.com

Телефоны

Краснодарский край: **+7(918)465-66-44**

США, Майами, Флорида: **+1(954)274-4435**

Время работы

Понедельник – Суббота: **9:00 - 21:00**
EDT

Воскресенье: **Закрито**

Адрес



Harbour Towne Marina, 850 NE 3rd St,
STE 213, Dania, FL 33004